

University of Wollongong

Research Online

Faculty of Engineering and Information
Sciences - Papers: Part A

Faculty of Engineering and Information
Sciences

1-1-2015

A new insight into ductile fracture of ultrafine-grained Al-Mg alloys

Hailiang Yu

University of Wollongong, hailiang@uow.edu.au

A Kiet Tieu

University of Wollongong, ktieu@uow.edu.au

Cheng Lu

University of Wollongong, chenglu@uow.edu.au

Xiong Liu

University of Wollongong, xiong@uow.edu.au

Mao Liu

University of Wollongong, ml818@uowmail.edu.au

See next page for additional authors

Follow this and additional works at: <https://ro.uow.edu.au/eispapers>



Part of the [Engineering Commons](#), and the [Science and Technology Studies Commons](#)

Research Online is the open access institutional repository for the University of Wollongong. For further information contact the UOW Library: research-pubs@uow.edu.au

A new insight into ductile fracture of ultrafine-grained Al-Mg alloys

Abstract

It is well known that when coarse-grained metals undergo severe plastic deformation to be transformed into nano-grained metals, their ductility is reduced. However, there are no ductile fracture criteria developed based on grain refinement. In this paper, we propose a new relationship between ductile fracture and grain refinement during deformation, considering factors besides void nucleation and growth. Ultrafine-grained Al-Mg alloy sheets were fabricated using different rolling techniques at room and cryogenic temperatures. It is proposed for the first time that features of the microstructure near the fracture surface can be used to explain the ductile fracture post necking directly. We found that as grains are refined to a nano size which approaches the theoretical minimum achievable value, the material becomes brittle at the shear band zone. This may explain the tendency for ductile fracture in metals under plastic deformation.

Keywords

ductile, fracture, ultrafine, grained, al, mg, insight, alloys, into

Disciplines

Engineering | Science and Technology Studies

Publication Details

Yu, H., Tieu, A. Kiet., Lu, C., Liu, X., Liu, M., Godbole, A., Kong, C. & Qin, Q. (2015). A new insight into ductile fracture of ultrafine-grained Al-Mg alloys. *Scientific Reports*, 15 (9568), 1-9.

Authors

Hailiang Yu, A Kiet Tieu, Cheng Lu, Xiong Liu, Mao Liu, Ajit R. Godbole, Charlie Kong, and Q Qin



OPEN

A new insight into ductile fracture of ultrafine-grained Al-Mg alloys

Hailiang Yu¹, A. Kiet Tieu¹, Cheng Lu¹, Xiong Liu¹, Mao Liu¹, Ajit Godbole¹, Charlie Kong² & Qinghua Qin³¹School of Mechanical, Materials & Mechatronics Engineering, University of Wollongong, Wollongong, NSW 2500, Australia, ²Electron Microscope Unit, University of New South Wales, Sydney, NSW 2052, Australia, ³Research School of Engineering, Australian National University, Canberra, ACT 2601, Australia.SUBJECT AREAS:
METALS AND ALLOYS
APPLIED PHYSICS
MECHANICAL PROPERTIES
MECHANICAL ENGINEERINGReceived
28 October 2014Accepted
11 March 2015Published
8 April 2015Correspondence and
requests for materials
should be addressed to
H.Y. (hailiang@uow.
edu.au; yuhailiang
1980@gmail.com)

It is well known that when coarse-grained metals undergo severe plastic deformation to be transformed into nano-grained metals, their ductility is reduced. However, there are no ductile fracture criteria developed based on grain refinement. In this paper, we propose a new relationship between ductile fracture and grain refinement during deformation, considering factors besides void nucleation and growth. Ultrafine-grained Al-Mg alloy sheets were fabricated using different rolling techniques at room and cryogenic temperatures. It is proposed for the first time that features of the microstructure near the fracture surface can be used to explain the ductile fracture post necking directly. We found that as grains are refined to a nano size which approaches the theoretical minimum achievable value, the material becomes brittle at the shear band zone. This may explain the tendency for ductile fracture in metals under plastic deformation.

Since the brittle fracture model proposed by Griffith in the last century, many studies focusing on fracture mechanics have been carried out^{1–3}. However, the exact nature of ductile fracture remains largely unknown, despite the great deal of attention it has received, especially with the development of nano-grained materials^{4–6}.

Nano-grained/ultrafine-grained bulk metals produced using severe plastic deformation (SPD) techniques show excellent mechanical properties^{7–10}. SPD techniques such as equal channel angular pressing¹¹, high pressure torsion¹² and accumulative rolling bonding¹³ have been developed in the past 30 years. However, such techniques are rarely used to produce continuous sheets/foils. Sheets/foils are widely used in the aerospace, automotive, marine and other industries, in which they are required to have both excellent ductility and strength. In general, sheets/foils are produced by cold rolling. Examination of the microstructures of cold-rolled sheets/foils has shown that the cold rolling process increases the extent of centerline segregation of the second-phase particles¹⁴. Compared with cold rolling, the asymmetric rolling (AR) technique is better suited to produce thinner foils due to the formation of a cross-shear region in the rolling deformation zone¹⁵. Moreover, AR is a continuous SPD technique suitable for achieving a marked reduction in grain size below the micron level¹⁶. Cryorolling is another SPD technique that can be used to produce nano-grained materials^{17,18}. Asymmetric cryorolling (ACR) is a technique that combines the features of AR and cryorolling, and has been used to produce nano-grained aluminum sheets^{19,20}. Generally, the techniques used to obtain an ultrafine-grained microstructure strongly influence the mechanical properties of the materials²¹. This is primarily because different techniques result in differences in the microstructure, such as distribution of grains and the presence of subgrains, dislocation density and boundary characteristics.

The ultrafine grains and the high density of grain boundaries restrict the nucleation, and also the movement and the interaction of dislocations²². Although many deformation mechanisms such as grain rotation²³ and grain boundary sliding²⁴ have been proposed to explain the improvement in ductility of nano-grained materials, many nano-grained materials exhibit very low ductility and very limited strain hardening. As described by Ritchie²⁵, in the quest for stronger and harder materials, bulk structural materials without an appropriate fracture resistance are of limited benefit. In contrast, most coarse-grained metals subjected to tensile tests are tested to ductile fracture. Many ductile fracture criteria have been proposed. The basic principles upon which ductile fracture criteria are based can be generally divided into four categories²⁶: (a) energy dissipation; (b) void growth: material modeling; (c) void growth: growth mechanisms; and (d) void growth: void geometry. These are exemplified by the Cockcroft-Latham²⁷, the Gurson-Tvergaard-Needleman^{28,29}, and the continuum damage mechanics (CDM) or CDM-based^{30–32} fracture criteria. In addition, the micromechanics of ductile fracture have made enormous progress in recent years³³. All the above models assume that the fracture evolution directly depends on the



strength, strain hardening capability and strain rate sensitivity of the matrix surrounding the voids. None of these criteria consider the change in microstructure during ductile fracture.

In this paper, we try to answer the question whether the ductile fracture behavior of metals is only determined by the voids. Ultrafine-grained Al-Mg alloy sheets were fabricated by cold rolling, AR, cryorolling, and ACR respectively. The ductility of the sheets produced using all four rolling techniques reduces as the number of rolling passes increases, while the grains are refined gradually. The mean grain size before and after fracture at the shear band zone were examined. We found that the mean grain size near the fracture surface is much smaller than that in the matrix, and is close to the theoretical achievable minimum.

Results

Fig. 1a shows the coarse-grained microstructure of annealed samples used in the rolling process. Fig. 1b1 and Fig. 1b2 show the microstructures of sheets produced using cold rolling after the first and third pass respectively. As the number of rolling passes increases, the coarse grains are progressively refined. Fig. 1b3 shows the grain size distribution after the third cold rolling pass, when the mean grain size is 436.5 nm. Fig. 1c1 and Fig. 1c2 show the microstructures of sheets produced using AR after the first and third pass. Both the grain sizes are smaller than those shown in Fig. 1b. After the third AR pass, the mean grain size has been refined to 375 nm, as shown in Fig. 1c3. Fig. 1d1 and Fig. 1d2 show the microstructures of sheets produced using cryorolling after the first and third pass. The mean grain size induced by cryorolling is much smaller than that by conventional cold rolling, and it is slightly larger than that due to AR, as shown in Fig. 1d3. Fig. 1e1 and Fig. 1e2 show the microstructures of sheets fabricated using ACR. The mean grain size of 350 nm obtained after the third ACR pass is much smaller than that obtained by the other three processes.

Fig. 2 shows the mechanical properties of the rolled sheets. Fig. 2a presents the engineering stress vs engineering strain curve for cold-rolled samples and ACR-processed samples. It can be seen that serrated deformation occurs during the tensile test. Lüders strain is an inherent feature of Al-Mg alloys with fine grains. This is attributed to the dynamic strain-ageing effect, and to interactions between the mobile Mg solute atoms and dislocations³⁴. Zhao *et al.*³⁵ pointed out that the critical strain ε_c for initiation of serrated flow increases considerably with increasing strain and Mg content, contrary to the behavior of coarse-grained and non-deformed counterparts. Fig. 2b shows that the tensile stress of sheets increases for these four rolling techniques as the number of rolling passes increases. In addition, the tensile stresses of samples produced using cryorolling and AR have similar values, higher than those produced using cold rolling, but lower than those produced using ACR. Fig. 2c, shows that the changes in sample hardness follow similar trends. With grain refinement, the hardness of the samples increases. Generally for metals, the yield stress is about three times the hardness¹⁹.

It is well known that the dislocations in crystalline solids are thermodynamically unstable entities³⁶. Low temperatures can lead to a higher dislocation density that can effectively suppress dynamic recovery. At cryogenic temperatures, the suppression of dynamic recovery during deformation is expected to preserve the high density of defects generated by deformation³⁷. It is easy to understand why, with the same strain, the grains refined at cryogenic temperatures are smaller than those at room temperature. In Fig. 1, the mean grain size of sheets produced by cryorolling is seen to be 404 nm, compared to 436 nm for cold rolling. The mean grain size of sheets produced using ACR is 350 nm, compared to 375 nm for sheets produced using AR. According to the Hall-Petch relationship,

$$\sigma_y = \sigma_0 + k_y / \sqrt{D} \quad (1)$$

where σ_y is the yield stress after deformation, σ_0 is the yield stress after annealing, k_y is the Petch parameter, and D is the mean grain size, the yield stress, hardness and tensile stress of sheets processed at cryogenic temperatures are greater than those processed at room temperature, as shown in Fig. 2b and Fig. 2c. Due to the minimum mean grain size of sheets produced using ACR, the hardness, yield stress and tensile stress are higher than in sheets produced using the other three processes.

Fig. 2d shows the uniform strain of sheets as a function of the number of passes for various processes. The uniform strain of the sheets has been widely used to analyze the ductility of nano-grained sheets/foils³⁸. As the number of rolling passes increases, the ductility of the sheets reduces for the four rolling techniques. The figure also shows that the samples produced using cryorolling have the highest uniform strain, and those produced using AR have the lowest uniform strain. It is also very interesting that the uniform strain resulted from cryorolling is higher than that resulted from cold rolling, and that the uniform strain produced using ACR is higher than that produced using AR. This implies that the ductility of Al-Mg alloys deformed at cryogenic temperatures is higher than that of the material deformed at room temperature.

Fig. 3 shows sequentially the SEM images of fracture surfaces. In the Figure, '1' stands for the first pass, '2' the second pass, and '3' the third pass. As the number of rolling passes increases, the dimples on the fracture surfaces gradually reduce and become shallower. This means that the ductility reduces as the mean grain size decreases, as shown in Fig. 2d. In Figs. 3a3 to d3 reveal the occurrence of cleavage fracture at some locations. In addition, the dimples on the fracture surface are both deeper and more in number for cryorolled samples than for cold-rolled samples. Similarly, the dimples on the fracture surface of ACR-processed samples are both deeper and more in number than for AR-processed samples.

Discussion

In Fig. 2d and Fig. 3, we observed that the ductility of the sheets reduces with grain refinement for all four rolling techniques. This observation suggests that the ductile fracture of the sheets may be determined by the grain evolution in the shear banding zone, apart from the void growth mechanisms. Here we propose close examination of the change in microstructure at the fracture site. Fig. 4a shows a detail of the SEM image of a focused ion beam (FIB) sample at the fracture surface of a tensile test sample. Fig. 4b (also Figs. S1, S2, S3 and S4) shows the microstructure near the fracture surface of the samples after the first cryorolling pass. The figure shows that there are some voids, cracks and inclusions. Generally these features characterize ductile fracture. However, they only occupy a small part of the full image. In addition, the processes were carried out on the same sheets, so that there is no difference in their inclusion content. The rolling process may affect the stress state and the initiation of micro-cracks around the inclusions³⁹. The inclusions are very likely to be more brittle and cracks would form more easily during deformation at cryogenic temperatures. However, the ductility of the sheets deformed at cryogenic temperature is greater than those deformed at room temperature. Thus, in the current study, the influence of deformation of inclusions on the ductility can be neglected. In Fig. 4b, we noticed another interesting feature of the local grain size distribution near the fracture surface. The grains near the fracture surfaces are refined. Figs. 4c1 to 4f2 show the grain size distribution before and after tensile processing. After the tensile test, the grains in the local zone near the fracture surface are more refined than before the tensile test. For the samples produced using cold rolling, the mean grain size is reduced from 777 nm to 266 nm. For AR, cryorolling and ACR, the corresponding mean grain size is reduced from 540 nm to 254 nm, 572 nm to 223 nm, and 496 nm to 207 nm respectively. For the Al-Mg alloy, the minimum mean grain size is given by the following equation⁴⁰:

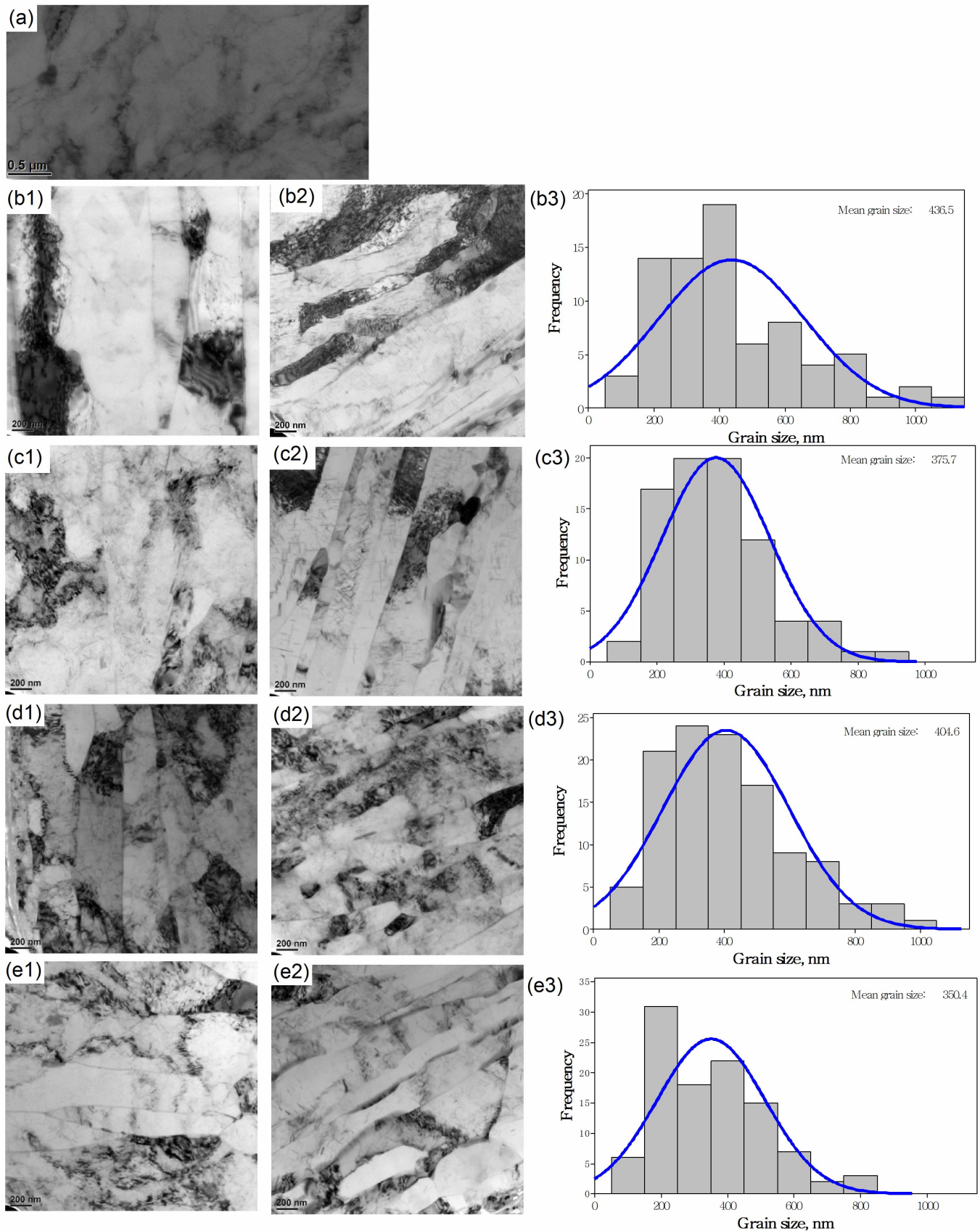


Figure 1 | TEM images of rolled sheets under different rolling techniques. (a) annealed sample, (b1) and (b2) after the first and third pass of cold rolling, (b3) grain size distribution after the third cold rolling pass; (c1) and (c2) after the first and third pass of AR, (c3) grain size distribution after the third AR pass; (d1) and (d2) after the first and third pass of cryorolling, (d3) grain size distribution after the third cryorolling pass; (e1) and (e2) after the first and third pass of ACR, (e3) grain size distribution after the third ACR pass.

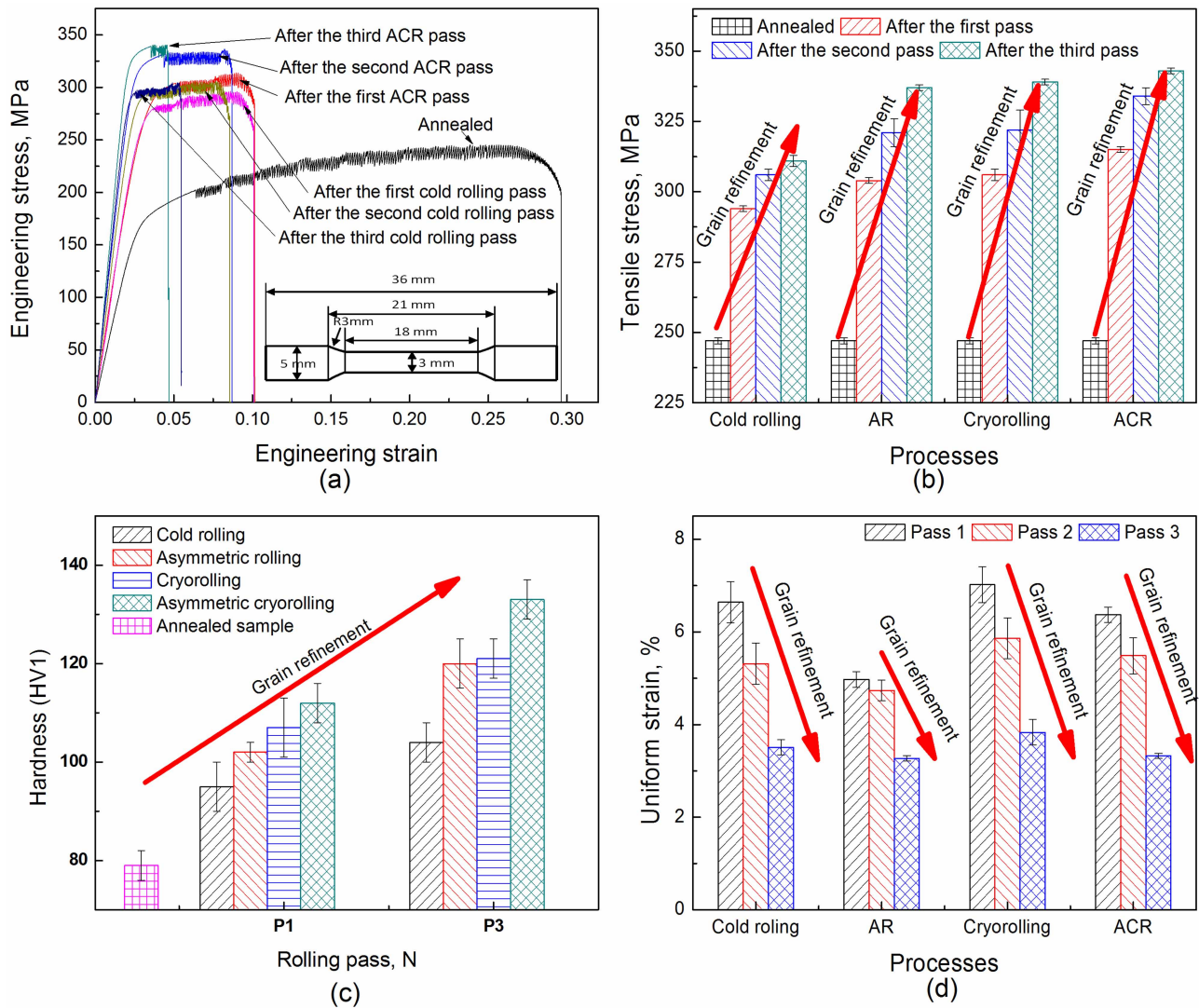


Figure 2 | Mechanical properties of sheets under different rolling techniques. (a) Engineering strain vs. engineering stress; (b) Tensile stress vs. number of rolling passes; (c) Hardness vs. number of rolling passes; (c) Uniform strain vs. number of rolling passes.

$$\frac{d_s}{b} = A \exp\left(\frac{-\beta Q}{4RT}\right) \left(\frac{D_{p0} G b^2}{v_0 k T}\right)^{1/4} \left(\frac{\gamma_{SFE}}{G b}\right)^{1/2} \left(\frac{G}{H V_s}\right)^{5/4} \quad (2)$$

where d_s is the steady-state grain size, b is the Burgers vector, A is a constant, $\beta \approx 0.04$, Q is the activation energy for self-diffusion, R is the universal gas constant, T is the absolute temperature, D_{p0} is the frequency factor for pipe diffusion, G is the shear modulus, v_0 is the initial dislocation velocity, k is Boltzmann's constant, γ_{SFE} is the stacking fault energy, and $H V_s$ is the steady-state hardness. According to the theoretical calculation by Edalati *et al.*⁴⁰, the minimum achievable mean grain size of an SPD-processed Al-Mg alloy at room temperature is around 230 ~ 330 nm. It is obvious from Fig. 4 that the mean grain size of sheets at fracture approaches the theoretical minimum value (see Fig. S5).

During deformation, grains are often refined as a consequence of fracture in ductile materials. It is known that nano-grained metals often have reduced ductility. For a coarse-grained Cu sample, the uniform elongation reaches $31 \pm 2\%$, however a free-standing nano-grained Cu foil showed a uniform elongation of $<2\%$ ⁴¹. During the tensile test, the grains undergo significant local refinement, causing embrittlement, until the occurrence of failure. There are a number of criteria associated with ductile fracture^{26–32}. Void nucleation and growth play a key role leading to necking. Some of them assume that

the materials will fail when the void volume fraction reaches a certain value. However, none of those criteria consider the effect of grain refinement during plastic deformation post necking that is often observed in shear band zone⁴² and as the crack propagates along the shear band zone⁴³. Among these fracture criteria, the Cockcroft-Latham fracture criterion is widely used in engineering analysis. The Cockcroft-Latham fracture criterion assumes that the maximum principal stress is the most relevant in the initiation of fracture. The criterion is defined in terms of traction plastic work associated with the principal stress along the path of the equivalent plastic strain, as shown in following equation:

$$\int_0^{\bar{\epsilon}_f} \sigma_1 d\bar{\epsilon} = C_1 \quad (3)$$

where σ_1 is the maximum principal stress; $\bar{\epsilon}_f$ is the critical plastic strain at fracture; and C_1 is the critical damage value at fracture.

Based on the Hall-Petch relationship and taking into account arguments involving the relationship between work hardening and dislocation density, the dependence of the flow stress on strain can be given by⁴⁴:

$$\sigma = \sigma_\infty + abG\sqrt{\rho} \quad (4)$$

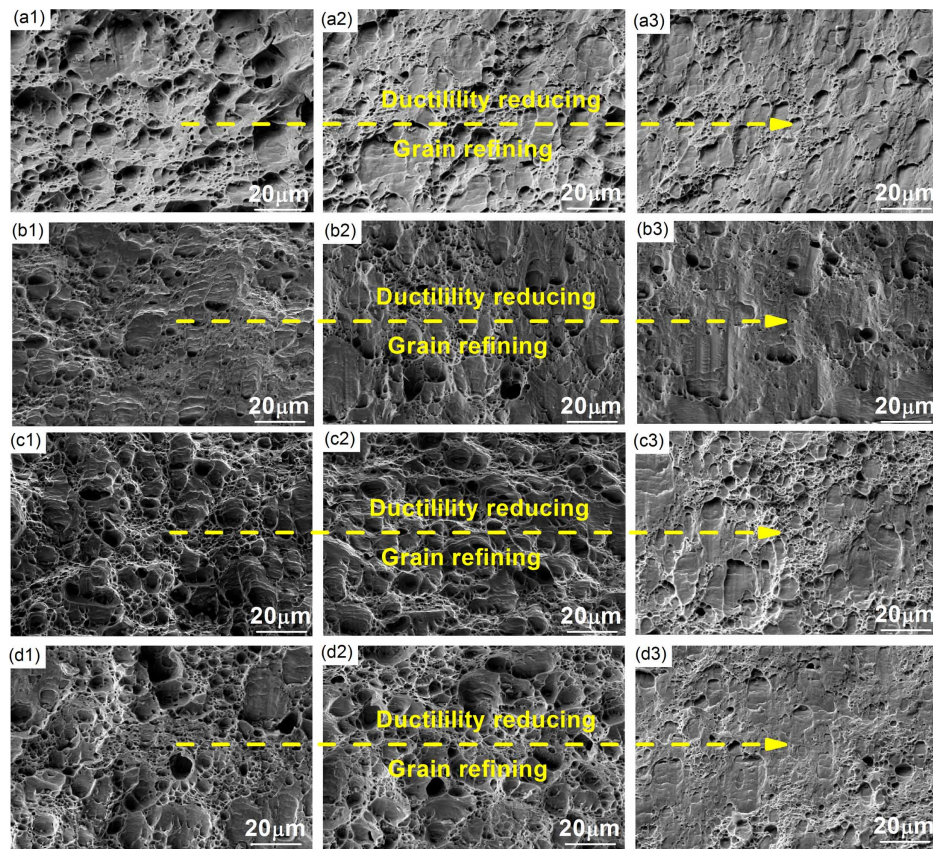


Figure 3 | SEM images of the fracture surface of tensile samples after (a1) the first cold rolling pass, (a2) the second pass, (a3) the third pass; (b1) the first AR pass, (b2) the second pass, (b3) the third pass; (c1) the first cryorolling pass, (c2) the second pass, (c3) the third pass; (d1) the first ACR pass, (d2) the second pass and (d3) the third pass.

where σ_∞ is the friction stress, G is the shear modulus, b is the Burgers vector and α is a constant. In the case of severe plastic deformation, the generated dislocation density is much greater than the original dislocation density. Here we assume that the dislocation density in metals during deformation nearly equals the generated dislocation density. Thus the dislocation density ρ can be calculated in terms of the strain using⁴⁵:

$$\rho_g = (bl)^{-1} \varepsilon \quad (5)$$

where ρ_g is the total generated dislocation density, b is the Burgers vector, l is the mean free path for the dislocation movement, and ε is the strain. From the equations (1) ~ (5), we can obtain the relationship between mean grain size and strain:

$$D \approx \frac{k^2 l}{\alpha^2 b G^2 \varepsilon} = \Phi \varepsilon^{-1} \quad (6)$$

where $\Phi = \frac{k^2 l}{\alpha^2 b G^2}$, can be assumed to be a constant for a material. This equation shows that the mean grain size is inversely proportional to the strain. When the strain increases to the critical plastic strain at fracture, the mean grain size will be reduced to a minimum value:

$$D_{\min} \approx \Phi \varepsilon_f^{-1} \quad (7)$$

In addition, as the mean grain size reduces, the metal becomes brittle. For brittle materials, generally the fracture stress equals the yield stress. From Eq. (1) and Eq. (3), the fracture criterion could be revised as:

$$\sigma_1 \geq \sigma_{y-\max} = \sigma_0 + k_y / \sqrt{D_{\min}} \quad (8)$$

Eq. (8) shows the relationship between fracture and the mean grain size. During deformation, grains are often refined to the minimum size in the shear band zone. This may well be the direct mechanism for fracture in ductile materials post necking. We have known that the nano-grained metals often have low ductility. During the tensile process, the grains in the shear band zone undergo severe local refinement, become more and more brittle until finally failure occurs. As shown in Fig. 5a, when the crack initiation occurs between an inclusion and the matrix, the grains in the matrix are very small. In Fig. 5b, it is seen that when a crack propagates, the grains at the crack tip are also very small. As seen in Fig. 5c, when a void expands, the grains around the void are refined.

Greater strength and toughness are desirable for most structural materials. However, for some nano-grained metals, generally ductility and strength are conflicting properties²⁵. As shown in Fig. 1 and Fig. 2, the ductility of the sheets gradually reduces with reduction in grain size. It is very important to improve the ductility of nano-grained metals, and generally, there are four ways of achieving this: (i) reducing the stacking fault energy and increasing the solute content⁴⁶; (ii) application of nanotwins⁴⁷; (iii) application of gradients structure^{48,49}; and (iv) controlling the grain size distribution¹⁷. For nano-grained copper sheets produced using cryorolling, Wang *et al.*¹⁷ believed that an inhomogeneous microstructure stabilized by strain hardening mechanisms, tensile deformation leads to a high tensile ductility. However, except for the smaller grain size resulted from rolling at cryogenic temperatures, we do not find any difference in grain size distribution in Fig. 1a and Fig. 1c, and in Fig. 1b and Fig. 1d. Therefore this mechanism cannot adequately explain the improvement in ductility of these Al-Mg sheets deformed at cryogenic temperature. In Fig. 4, the mean grain size of sheets produced at cryogenic temperature after fracture is seen to be smaller than that of

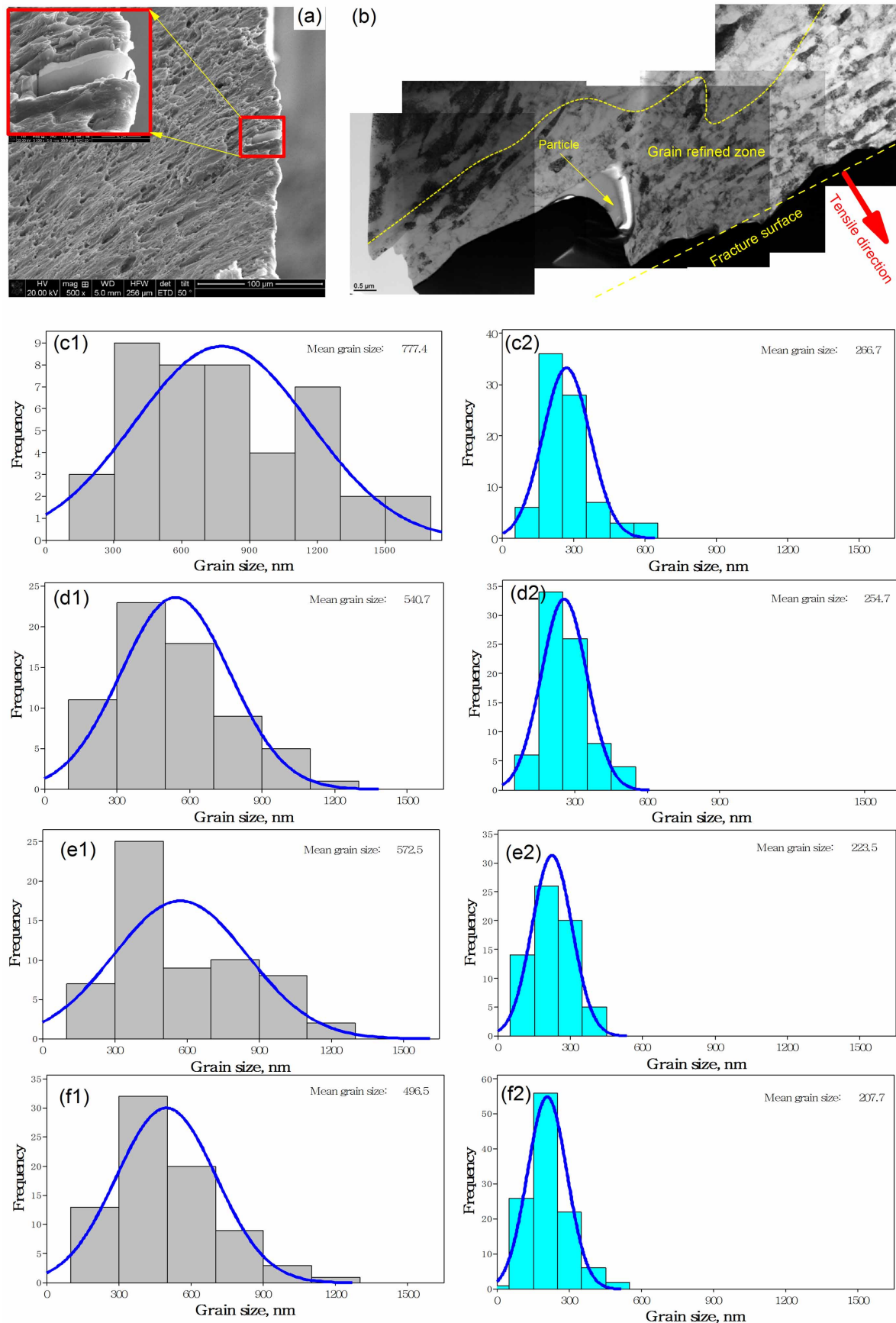


Figure 4 | (a) SEM of a FIB sample on the fracture surface; (b) TEM images of microstructure near fracture surface for cryorolling; (c1) ~ (f2), grain size distribution of samples. (c1) grain size of samples after cold rolling and (c2) after tensile test; (d1) grain size of samples after AR and (d2) after tensile test; (e1) grain size of samples after cryorolling and (e2) after tensile test; (f1) grain size of samples after ACR and (f2) after tensile test.

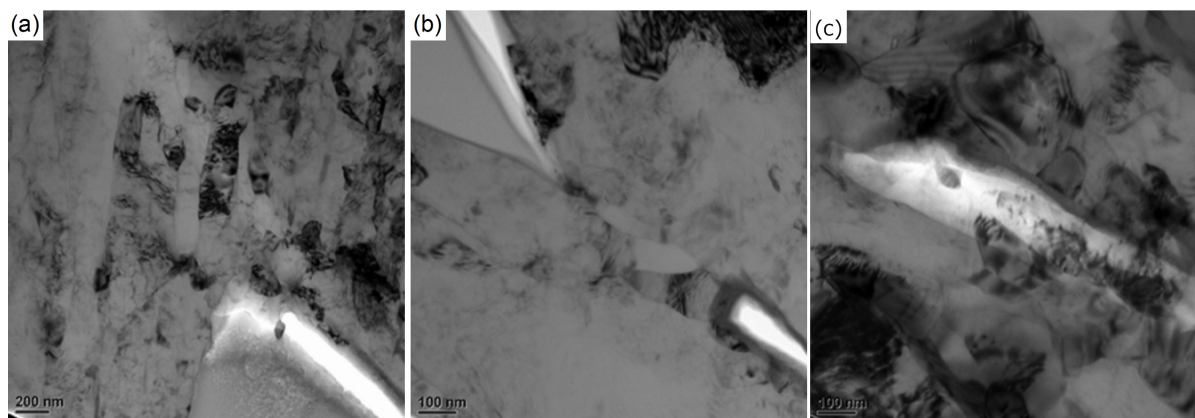


Figure 5 | TEM images of refined grains at the (a) inclusion, (b) crack tip and (c) void.

those produced at room temperature, and this may explain the improvement in ductility. A related question is: why do the Al-Mg sheets processed at cryogenic temperatures attain a smaller mean grain size at the fracture surface? The stacking fault energy on the equilibrium grain size affects the tensile properties of nano-grained metals. Huang *et al.*⁵⁰ reported that with increasing solute content and decreasing stacking fault energy, not only the strength but also the ductility of nano-grained copper alloys increased substantially. For the Al-Mg alloy, the distribution of Mg in Al will directly affect the mechanical properties of the sheets. Fig. 6 shows the microstructure of the sheets after the third pass using different processes. It is seen that when the sheets were rolled at cryogenic temperature, there are only few precipitation particles, much fewer than for the sheets rolled at room temperature. The suppression of large precipitation particles in the sheets will result in a higher Mg solute content in the Al matrix. The smaller the precipitation particles, the more refined would the grains be during the tensile fracture. This will directly

improve the ductility of the sheets as shown for nanoparticle composites^{51,52}.

In summary, Al-Mg alloy sheets were fabricated using four different techniques: cold rolling, asymmetric rolling, cryorolling and asymmetric cryorolling. As the number of rolling passes increases, the ductility of the sheets as well as the mean grain sizes reduces. A new mechanism was proposed to explain the ductile fracture of Al-Mg sheets post necking during tensile tests at low strain rate. The proposed mechanism includes other influences besides the voids. The sequence of steps leading to ductile fracture are: uniform elongation, void nucleation and growth, local necking, grain refinement until the mean grain size approaches the minimum achievable mean grain size, and finally damage. During the tensile process, the grains in the sheets produced at cryogenic temperature could be refined to a smaller size compared with those produced at room temperature. This may also explain the improvement in the ductility of the sheets at cryogenic temperatures. In addition, electron backscatter diffrac-

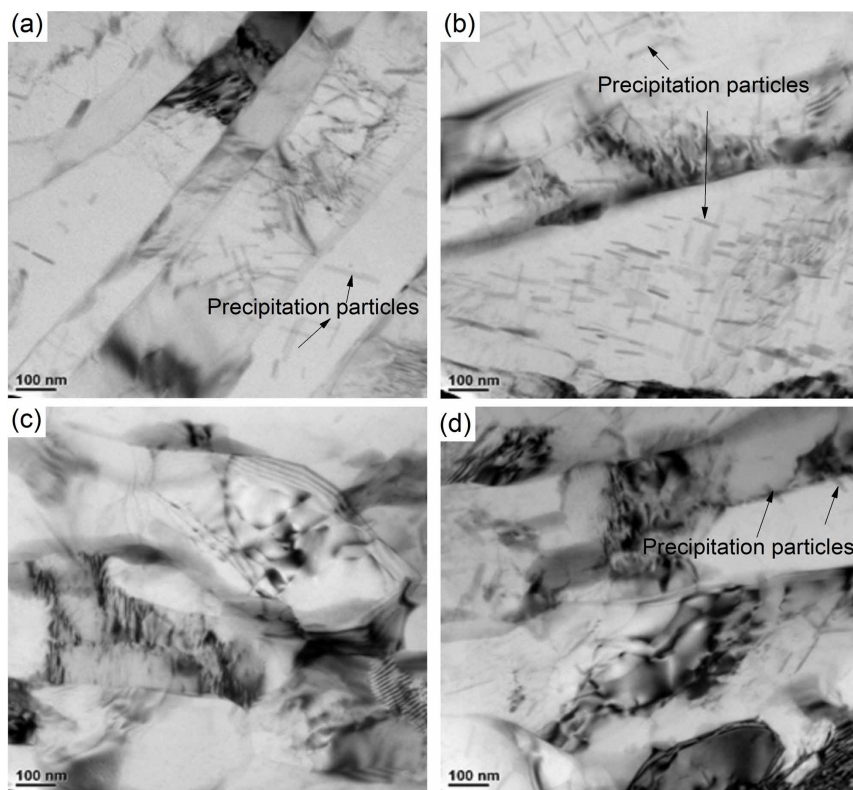


Figure 6 | Precipitation particle distribution in sheets after the third pass: (a) cold rolling, (b) AR, (c) cryorolling, (d) ACR.



tion (EBSD) study on the microstructure near fracture surface should be carried out in the future⁵³.

Methods

In the experiments, 1 mm thick Al-Mg alloy (AA5052) sheets were used. Their chemical composition was Mg-2.5, Si-0.25, Fe-0.4, Cr-0.15, Zn-0.1, Ti-0.94, Cu-0.1, Mn-0.01, and Al-balance. Al-Mg alloys possess excellent properties such as high corrosion resistance, high strength to weight ratio, weldability and formability. They have therefore been widely employed as structural materials in industrial applications such as aerospace, automotive, marine and other industries. A 4-high multifunction rolling mill was used to carry out the rolling experiments. Different original sheets were subjected to four kinds of process: cold rolling, AR, cryorolling, and ACR. The rolling speed ratio between the up and bottom rolls was 1.4 for AR and ACR. For cryorolling and ACR, the sheets were dipped in liquid nitrogen (-196°C) for at least 8 minutes¹⁹, satisfying the requirement that the temperature of the sheets should be lower than -100°C after each pass¹⁷. The thicknesses of the rolled sheets after each successive pass were 0.6 mm, 0.4 mm and 0.2 mm for cold rolling, AR, cryorolling and ACR respectively. Tensile tests with a strain rate of $1.0 \times 10^{-3} \text{ s}^{-1}$ on an INSTRON machine were used to determine the engineering stress vs engineering strain characteristics. The tensile tests were repeated three times for each thickness. An FEI xT Nova Nanolab 200 Dual-beam workstation was used to prepare thin foil specimens from the rolled and tensile samples for TEM observation. A Philips CM200 field emission gun transmission electron microscope (FEG/TEM) equipped with a Bruker Energy Dispersive X-ray (EDAX) spectroscopy system operating at an accelerating voltage of 200 kV was used to investigate the details of the microstructure. For the severe plastic deformation processed metals, the TEM technique is widely used to study the grain size and distribution^{54,55}.

- Johnson, G. R. & Cook, W. H. Fracture characteristics of three metals subjected to various strains, strain rates, temperatures and pressure. *Eng. Fract. Mech.* **21**, 31–148 (1985).
- Suresh, S. Graded materials for resistance to contact deformation and damage. *Science* **292**, 2247–2251 (2001).
- Pook, L. P. A 50-year retrospective review of three-dimensional effects at cracks and sharp notches. *Fatig. Fract. Eng. Mater. Struct.* **36**, 699–728 (2013).
- Hasnaoui, A., Van Swyghoven, H. & Derlet, P. M. Dimples on nanocrystalline fracture surfaces as evidence for shear plane formation. *Science* **300**, 1550–1555 (2003).
- Peterlik, H., Roschger, P., Klaushofer, K. & Fratzl, P. From brittle to ductile fracture of bone. *Nat. Mater.* **5**, 52–55 (2006).
- Schwiechzik, J. *et al.* In situ micropillar compression reveals superior strength and ductility but an absence of damage in lamellar bone. *Nat. Mater.* **13**, 740–747 (2014).
- Valiev, R. Z., Islamgaliev, R. V. & Alexandrov, I. V. Bulk nanostructured materials form severe plastic deformation. *Prog. Mater. Sci.* **45**, 103–189 (2000).
- Valiev, R. Z. Nanostructuring of metals by severe plastic deformation for advanced properties. *Nat. Mater.* **3**, 511–516 (2004).
- Yu, H. L. *et al.* Fabrication of ultra-thin nanostructured bimetallic foils by accumulative rolling bonding and asymmetric rolling. *Sci. Rep.* **3**, 2373 (2013).
- Sakai, T., Belyakov, A., Kaibyshev, R., Miura, H. & Jonas, J. J. Dynamic and post-dynamic recrystallization under hot, cold and severe plastic deformation conditions. *Prog. Mater. Sci.* **60**, 130–207 (2014).
- Zha, M., Li, Y., Mathiesen, R. H., Bjørge, R. & Roven, H. J. Achieve high ductility and strength in an Al-Mg alloy by severe plastic deformation combined with inter-pass annealing. *Mater. Sci. Eng. A* **598**, 141–146 (2014).
- Liu, M. P. *et al.* Structure and mechanical properties of nanostructured Al-Mg alloys processed by severe plastic deformation. *J. Mater. Sci.* **48**, 4681–4688 (2013).
- Naeini, M. F., Shariat, M. H. & Eizadjou, M. On the chloride-induced pitting of ultra fine grains 5052 aluminium alloy produced by accumulative roll bonding process. *J. Alloy. Comp.* **509**, 4696–4700 (2011).
- Zhu, H. L., Ghosh, A. K. & Maruyama, K. Effect of cold rolling on microstructure and material properties of 5052 alloy sheet produced by continuous casting. *Mater. Sci. Eng. A* **419**, 115–121 (2006).
- Tang, D. L., Liu, X. H., Song, M. & Yu, H. L. Experimental and theoretical study on minimum achievable foil thickness during asymmetric rolling. *Plos One* **9**, e106637 (2014).
- Loorent, Z. & Ko, Y. G. Effect of different speed rolling strain on microstructure and mechanical properties of nanostructured 5052 Al alloy. *J. Alloy. Comp.* **586**, s205–s209 (2014).
- Wang, Y., Chen, M., Zhou, F. & Ma, E. High tensile ductility in a nanostructured metal. *Nature* **419**, 912–915 (2002).
- Sekhar, C., Narayanasamy, R. & Velmanirajan, K. Experimental investigations on microstructure and formability of cryorolled AA5052 sheets. *Mater. Des.* **53**, 1064–1070 (2014).
- Yu, H. L. *et al.* Asymmetric cryorolling for fabrication of nanostructural aluminum sheets. *Sci. Rep.* **2**, 772 (2012).
- Yu, H. L. *et al.* Mechanical properties of Al-Mg-Si alloy sheets produced using asymmetric cryorolling and ageing treatment. *Mater. Sci. Eng. A* **568**, 212–218 (2013).
- Kapoor, R., Kumar, N., Mishra, R. S., Huskamp, C. S. & Sankaran, K. K. Influence of fraction of high angle boundaries on the mechanical behavior of an ultrafine grained Al-Mg alloy. *Mater. Sci. Eng. A* **527**, 5246–5254 (2010).
- He, G., Hagiwara, M., Eckert, J. & Löser, W. Inverse deformation-fracture responses between dendrite and matrix in Ti-based nanostructured-dendrite composite. *Philos. Mag. Lett.* **84**, 365–372 (2004).
- Jin, M., Minor, A. M., Stach, E. A. & Morris Jr, J. W. Direct observation of deformation-induced grain growth during nanoindentation of ultrafine-grained Al at room temperature. *Acta Mater.* **52**, 5381–5387 (2004).
- Schiotz, J. & Jacobsen, K. W. A maximum in the strength of nanocrystalline copper. *Science* **301**, 1357–1359 (2003).
- Ritchie, R. O. The conflicts between strength and toughness. *Nat. Mater.* **10**, 817–822 (2011).
- Vaz Jr, M., De Santi Jr, N. & De Souza Neto, E. A. Numerical prediction of ductile failure onset under tensile and compressive stress states. *Int. J. Damage Mech.* **19**, 175–195 (2010).
- Cockcroft, M. G. & Latham, D. J. Ductile and workability of metals. *J. Inst. Metal.* **96**, 33–39 (1968).
- Gurson, A. L. Continuum theory of ductile rupture by void nucleation and growth. Part I - yield criteria and flow rules for porous ductile media. *J. Eng. Mater. Technol.* **99**, 2–15 (1997).
- Needleman, A. & Tvergaard, V. An analysis of ductile rupture modes at a crack tip. *J. Mech. Phys. Solid.* **35**, 151–183 (1987).
- Saanouni, K. On the numerical prediction of the ductile fracture in metal forming. *Eng. Fract. Mech.* **75**, 3545–3559 (2008).
- Besson, J. Continuum models of ductile fracture: a review. *Int. J. Damage Mech.* **19**, 3–52 (2010).
- Yu, H. L. *et al.* Tensile fracture of ultrafine grained Al 6061 sheets by asymmetric cryorolling. *Int. J. Damage Mech.* **23**, 1077–1095 (2014).
- Lassance, D., Fabregue, D., Delannay, F. & Pardoën, T. Micromechanics of room and high temperature fracture in 6xxx Al alloys. *Prog. Mater. Sci.* **52**, 62–129 (2007).
- Cui, G. R., Ma, Z. Y. & Li, S. X. The origin of non-uniform microstructure and its effects on the mechanical properties of a friction stir processed Al-Mg alloy. *Acta Mater.* **57**, 5718–5729 (2009).
- Zhao, S., Meng, C., Mao, F., Hu, W. & Gottstein, G. Influence of severe plastic deformation on dynamic strain aging of ultrafine grained Al-Mg alloys. *Acta Mater.* **76**, 54–67 (2014).
- Yu, H. L., Tieu, K., Lu, C. & Kong, C. Abnormally high residual dislocation density in pure aluminum after Al/Ti/Al laminate annealing for seven days. *Philos. Mag. Lett.* **94**, 732–740 (2014).
- Gang, U. G., Lee, S. H. & Nam, W. J. The evolution of microstructure and mechanical properties of a 5052 aluminium alloy by the application of cryogenic rolling and warm rolling. *Mater. Trans.* **50**, 82–86 (2009).
- Sharon, J. A., Padilla, H. A. & Boyce, B. L. Interpreting the ductility of nanocrystalline metals. *J. Mater. Res.* **28**, 1539–1552 (2013).
- Yu, H. L., Liu, X. H., Bi, H. Y. & Chen, L. Q. Deformation behavior of inclusions in stainless steel strips during multi-pass cold rolling. *J. Mater. Process. Technol.* **209**, 455–461 (2009).
- Edalati, K. *et al.* Influence of dislocation-solute atom interactions and stacking fault energy on grain size of single-phase alloys after severe plastic deformation using high-pressure torsion. *Acta Mater.* **69**, 68–77 (2014).
- Fang, T. H., Li, W. L., Tao, N. R. & Lu, K. Revealing extraordinary intrinsic tensile plasticity in gradient nano-grained copper. *Science* **331**, 1587–1590 (2011).
- Fatemi-Varzaneh, S. M., Zarei-Hanzaki, A. & Izadi, S. Shear deformation and grain refinement during accumulative back extrusion of AZ31 magnesium alloy. *J. Mater. Sci.* **46**, 1937–1944 (2011).
- Walley, S. M. Shear localization: a historical overview. *Metall. Mater. Trans. A* **38**, 2629–2654 (2007).
- Hansen, N. & Ralph, B. The strain and grain size dependence of the flow stress of copper. *Acta Metall.* **30**, 411–417 (1982).
- Qiao, X. G., Gao, N. & Starink, M. J. A model of grain refinement and strengthening of Al alloys due to cold severe plastic deformation. *Philos. Mag.* **92**, 446–470 (2012).
- Lu, L., Sui, M. L. & Lu, K. Superplastic extensibility of nanocrystalline copper at room temperature. *Science* **287**, 1463–1466 (2000).
- Wei, Y. *et al.* Evading the strength-ductility trade-off dilemma in steel through gradient hierarchical nanotwins. *Nat. Commun.* **5**, 3580 (2014).
- Wu, X. L., Jiang, P., Chen, L., Yuan, F. P. & Zhu, Y. T. Extraordinary strain hardening by gradient structure. *Proc. Natl. Acad. Sci. U.S.A.* **111**, 7197–7201 (2014).
- Lu, K. Making strong nanomaterials ductile with gradients. *Science* **345**, 1455–1456 (2014).
- Huang, C. X. *et al.* The effect of stacking fault energy on equilibrium grain size and tensile properties of nanostructured copper and copper-aluminum alloys processed by equal channel angular pressing. *Mater. Sci. Eng. A* **556**, 638–647 (2012).
- Göken, M. & Höppel, H. W. Tailoring nanostructured, graded, and particle-reinforced Al laminates by accumulative roll bonding. *Adv. Mater.* **23**, 2663–2668 (2011).
- Fan, C. & Inoue, A. Ductility of bulk nanocrystalline composites and metallic glasses at room temperature. *Appl. Phys. Lett.* **77**, 46–48 (2000).
- Kamikawa, N., Huang, X., Tsuji, N., Hansen, N. & Minamino, Y. EBSD and TEM characterization of ultrafine grained high purity aluminium produced by accumulative roll-bonding. *Mater. Sci. Forum* **512**, 91–96 (2006).



54. Hu, T., Ma, K., Topping, T. D., Schoenung, J. M. & Lavernia, E. J. Precipitation phenomena in an ultrafine-grained Al alloy. *Acta Mater.* **61**, 2163–2178 (2013).
55. Lu, L., Chen, X., Huang, X. & Lu, K. Revealing the maximum strength in nanotwinned copper. *Science* **323**, 607–610 (2009).

Acknowledgments

The leader author thanks to Prof. Yuntian T. Zhu at North Carolina State University for constructive discussions. The authors gratefully acknowledge the financial support from the Vice-Chancellor's Fellowship Grant and URC small grant at the University of Wollongong.

Author contributions

Y.H. conceived the study. Y.H., T.A.K. and L.C. wrote the main manuscript text. Y.H., L.X., L.M. and K.C. conducted the experiments. Y.H., T.A.K., L.C., G.A. and Q.Q. analyzed the data. All authors reviewed the manuscript.

Additional information

Supplementary information accompanies this paper at <http://www.nature.com/scientificreports>

Competing financial interests: The authors declare no competing financial interests.

How to cite this article: Yu, H. *et al.* A new insight into ductile fracture of ultrafine-grained Al-Mg alloys. *Sci. Rep.* **5**, 9568; DOI:10.1038/srep09568 (2015).



This work is licensed under a Creative Commons Attribution 4.0 International License. The images or other third party material in this article are included in the article's Creative Commons license, unless indicated otherwise in the credit line; if the material is not included under the Creative Commons license, users will need to obtain permission from the license holder in order to reproduce the material. To view a copy of this license, visit <http://creativecommons.org/licenses/by/4.0/>