

January 2015

The AROC Annual report: The state of rehabilitation in New Zealand in 2014

Frances D. Simmonds
University of Wollongong, frances@uow.edu.au

Tara L. Alexander
University of Wollongong, hurst@uow.edu.au

Follow this and additional works at: <https://ro.uow.edu.au/ahsri>

Research Online is the open access institutional repository for the University of Wollongong. For further information contact the UOW Library: research-pubs@uow.edu.au

The AROC Annual report: The state of rehabilitation in New Zealand in 2014

Abstract

This is the third comprehensive annual report describing discharge episodes from subacute inpatient rehabilitation programs provided by New Zealand facilities that are members of the Australasian Rehabilitation Outcomes Centre (AROC)¹.

Keywords

zealand, 2014, report, aroc, state, annual, rehabilitation

Publication Details

F. D. Simmonds & T. L. Alexander, The AROC Annual report: The state of rehabilitation in New Zealand in 2014 (Australian Health Services Research Institute, University of Wollongong, 2015).

aroc

The AROC Annual Report: the state of rehabilitation in New Zealand in 2014

Table of contents

- Introduction.....3
- Change in outcome measures.....4
- Distribution of impairments.....5
- Funding source.....8
- Outcome by impairment.....9
 - Stroke.....10
 - Brain dysfunction.....14
 - Neurological conditions.....18
 - Spinal cord dysfunction.....22
 - Amputation.....26
 - Arthritis.....30
 - Orthopaedic fractures.....34
 - Orthopaedic replacements.....38
 - All orthopaedic conditions.....42
 - Pulmonary.....46
 - Reconditioning.....50
 - Pain, Cardiac and Major multiple trauma.....54
 - Other disabling impairments.....60
- Contact AROC.....64

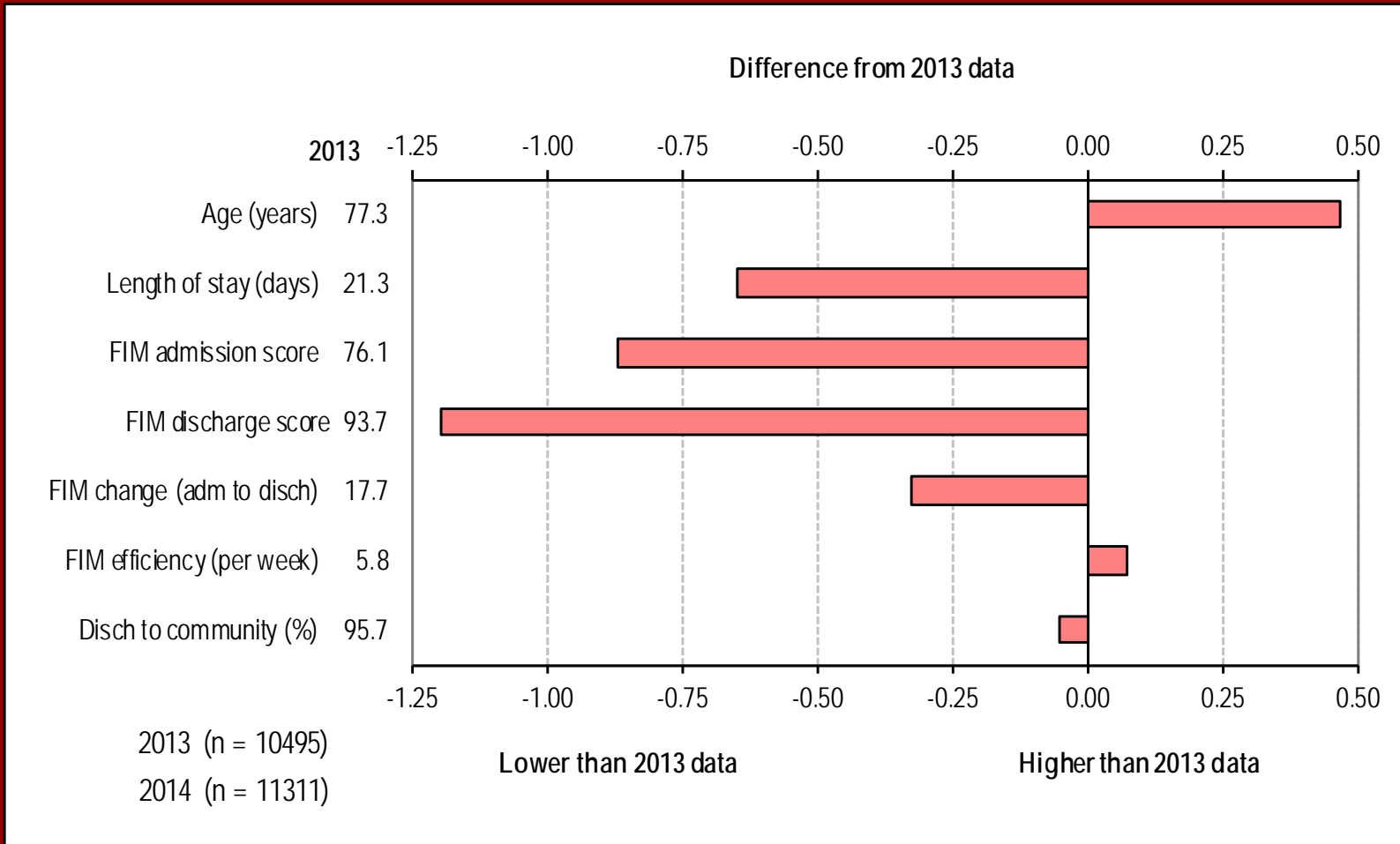
Introduction

This is the third comprehensive annual report describing discharge episodes from subacute inpatient rehabilitation programs provided by New Zealand facilities that are members of the Australasian Rehabilitation Outcomes Centre (AROC)¹.

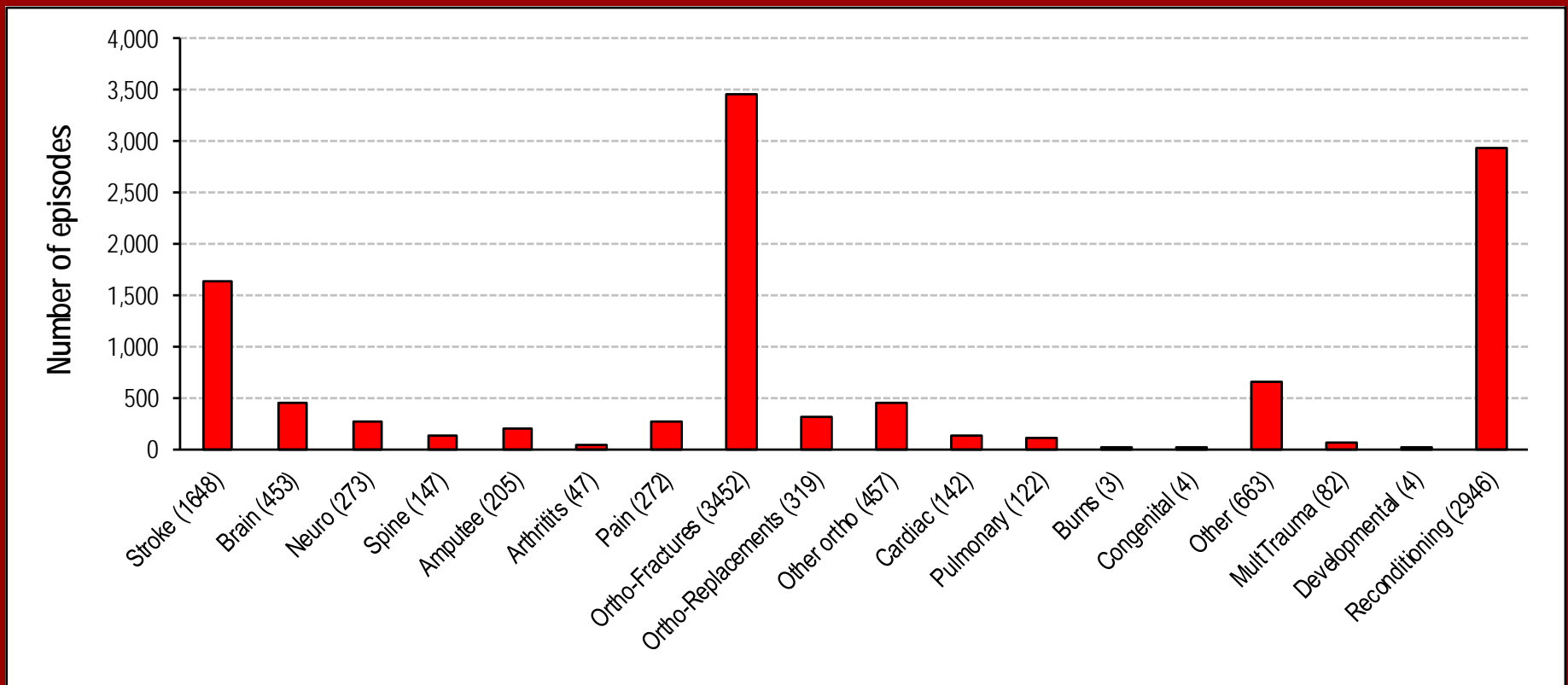
The inaugural report was published in 2013 and described the 2012 data. This report describes the 2014 data.

The provision of rehabilitation in New Zealand continues to grow in volume, with 2014 seeing a 7.3% real increase in inpatient episodes of rehabilitation provided. The majority of that volume growth is coming from the reconditioning and orthopaedic fractures impairment groups.

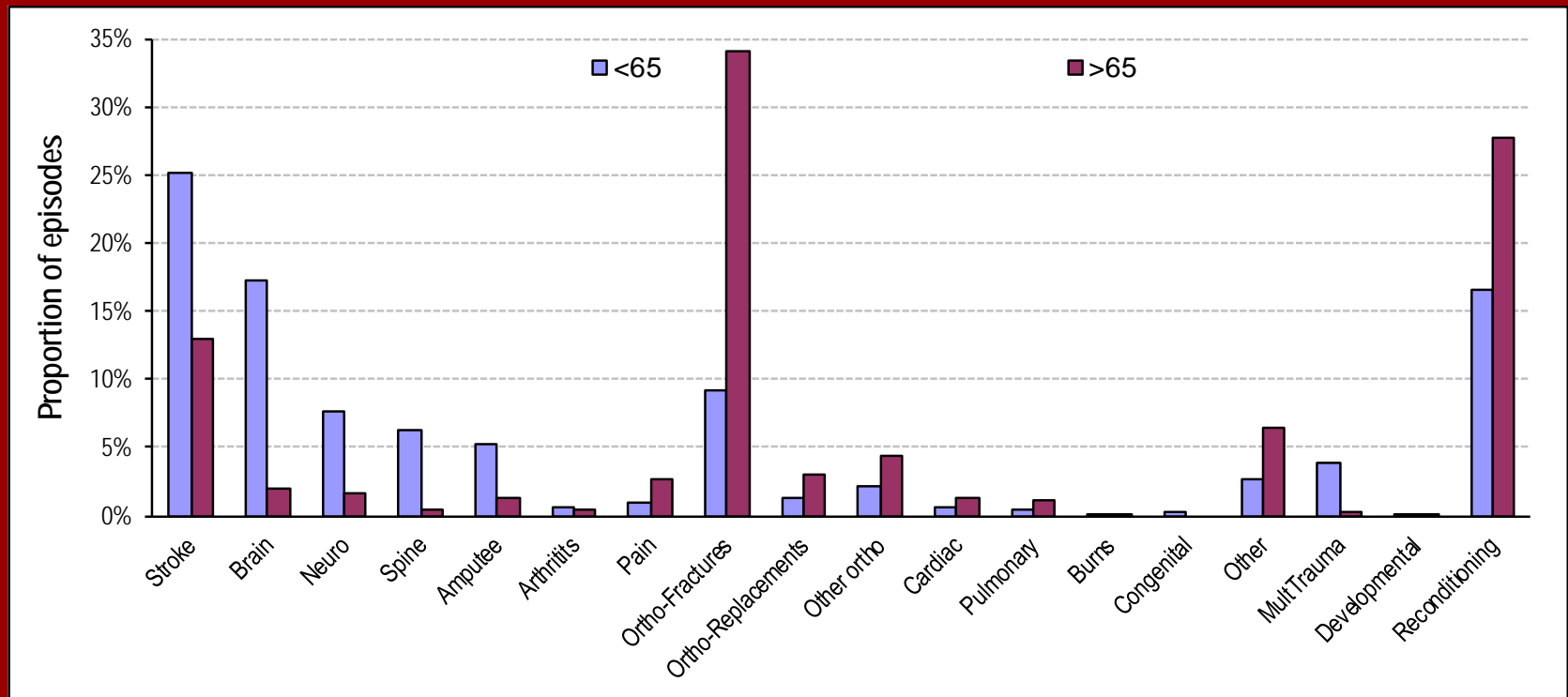
Change in outcome measures, 2013 to 2014



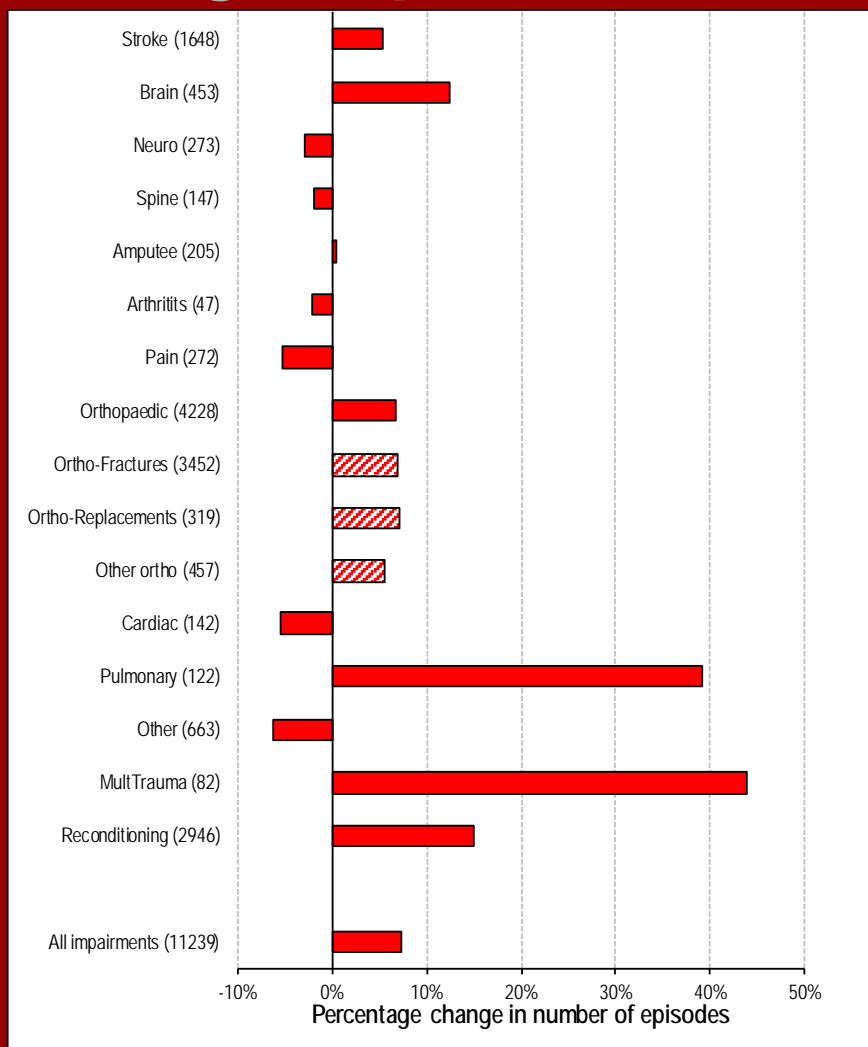
Number of episodes by impairment group, 2014



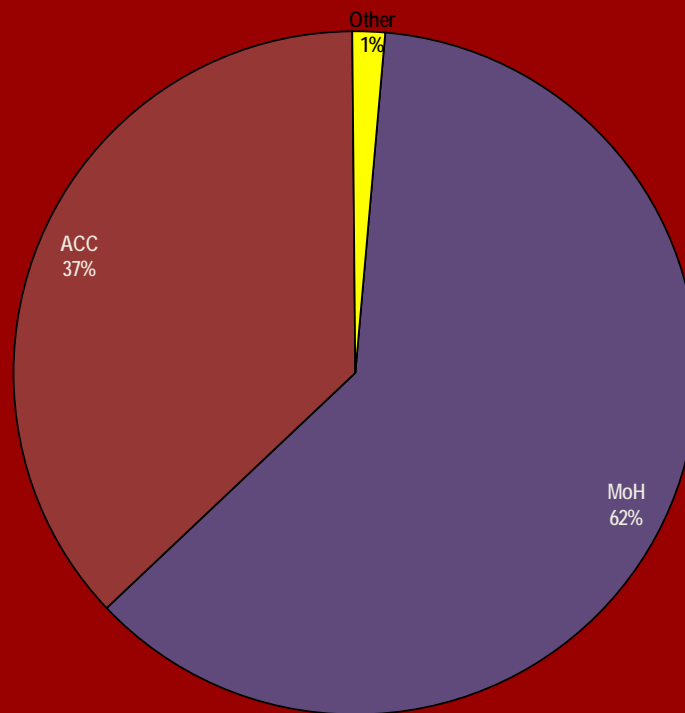
Proportion of episodes by impairment and benchmark group, 2014



Change in number of episodes by impairment group, 2013 to 2014



Funding source for rehabilitation in New Zealand, 2014



Outcomes by impairment

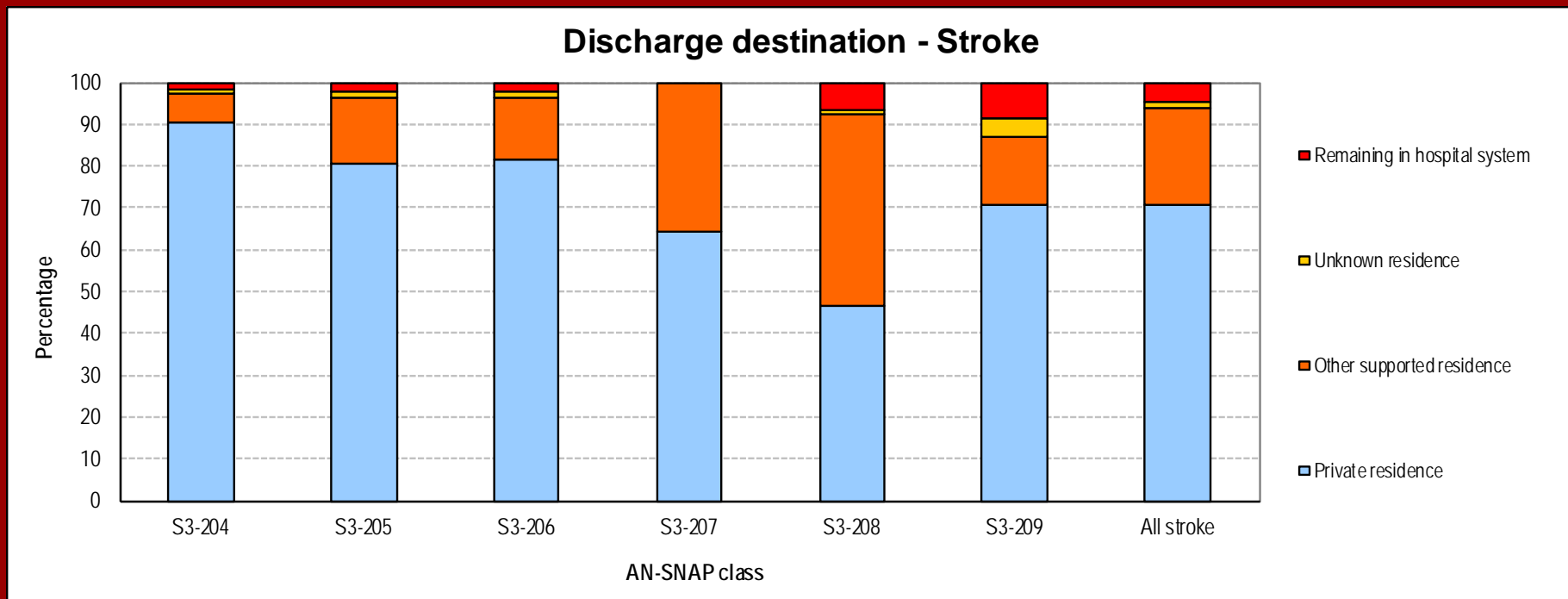
A series of figures and tables are provided for each impairment category; these outline the key descriptive data for 2014:

- First is a table outlining key 2014 data for the respective impairment category by version 3 of the AN-SNAP class.
- Second is a figure providing a summary of the discharge destination of all episodes by AN-SNAP class.
- The third figure provides a graphical representation of 2014 length of stay (LOS) and improvement in the FIM (Functional Independence Measure) by AN-SNAP class.
- Finally, the fourth figure presents the key changes in rehabilitation outcome measures between 2013 and 2014. The horizontal axis describes the difference between the 2013 and 2014 averages, while the actual 2013 data are presented on the left side of the graph.

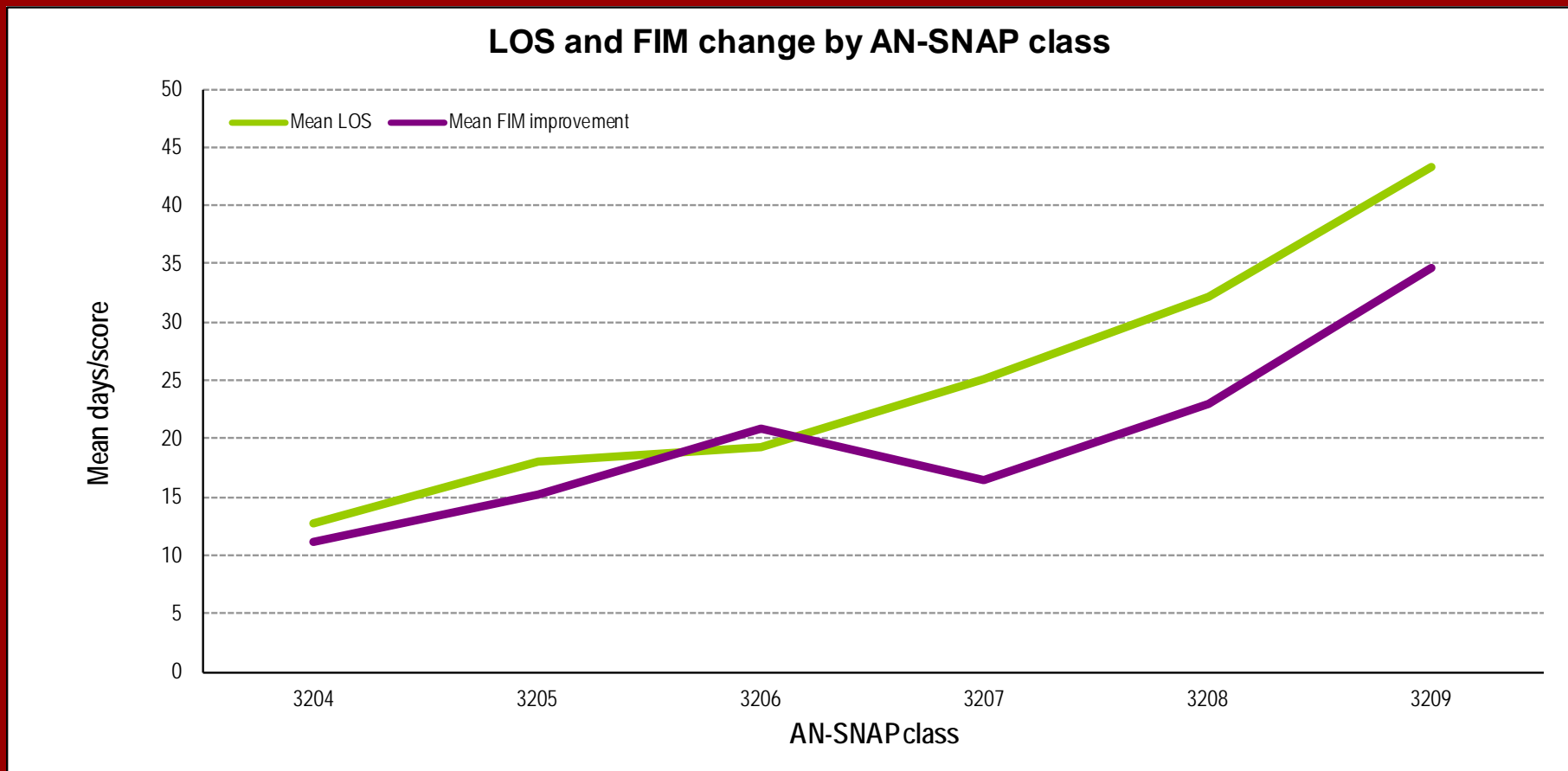
Stroke episodes in 2014

AN-SNAP class:	S3-204	S3-205	S3-206	S3-207	S3-208	S3-209	All stroke
Number of episodes	379	82	347	45	474	326	1,653
Proportion of episodes	22.9%	5.0%	21.0%	2.7%	28.7%	19.7%	100.0%
Benchmark groups (%)							
<i>Under 65</i>	69.9	57.3	81.2	86.7	100.0	48.2	76.5
<i>65 and over</i>	30.1	42.7	18.8	13.3	0.0	51.8	23.5
Gender (%)							
<i>Female</i>	47.8	35.4	50.7	37.8	54.0	39.9	47.7
<i>Male</i>	52.2	64.6	49.3	62.2	46.0	60.1	52.3
Age (Mean+95%CI)	70.9 (72.4–69.5)	67.4 (70.9–63.9)	75.5 (76.8–74.1)	77.4 (81.4–73.4)	83.2 (83.7–82.7)	61.7 (62.9–60.5)	73.6 (74.2–72.9)
Admission FIM (Mean+95%CI)	102.8 (103.8–101.8)	88.5 (90.7–86.2)	81.5 (82.3–80.7)	67.2 (68.9–65.4)	48.4 (49.7–47.0)	50.5 (52.2–48.8)	71.5 (72.7–70.2)
LOS (Mean+95%CI)	12.8 (13.7–11.8)	18.1 (20.3–15.9)	19.3 (20.7–18.0)	25.1 (30.5–19.7)	32.2 (34.1–30.2)	43.3 (46.1–40.4)	25.9 (26.9–24.9)
Discharge destination (%)							
<i>Discharged to community</i>	98.4	97.6	98.0	100.0	93.5	91.4	95.5
<i>Remaining in hospital system</i>	1.6	2.4	2.0	0.0	6.5	8.6	4.5
FIM improvement (Mean+95%CI)	11.2 (12.0–10.3)	15.3 (17.3–13.3)	20.8 (22.1–19.4)	16.5 (22.6–10.4)	23.0 (24.8–21.2)	34.7 (36.8–32.5)	21.3 (22.2–20.5)
FIM efficiency (FIM imp./LOS)	0.9	0.8	1.1	0.7	0.7	0.8	0.8

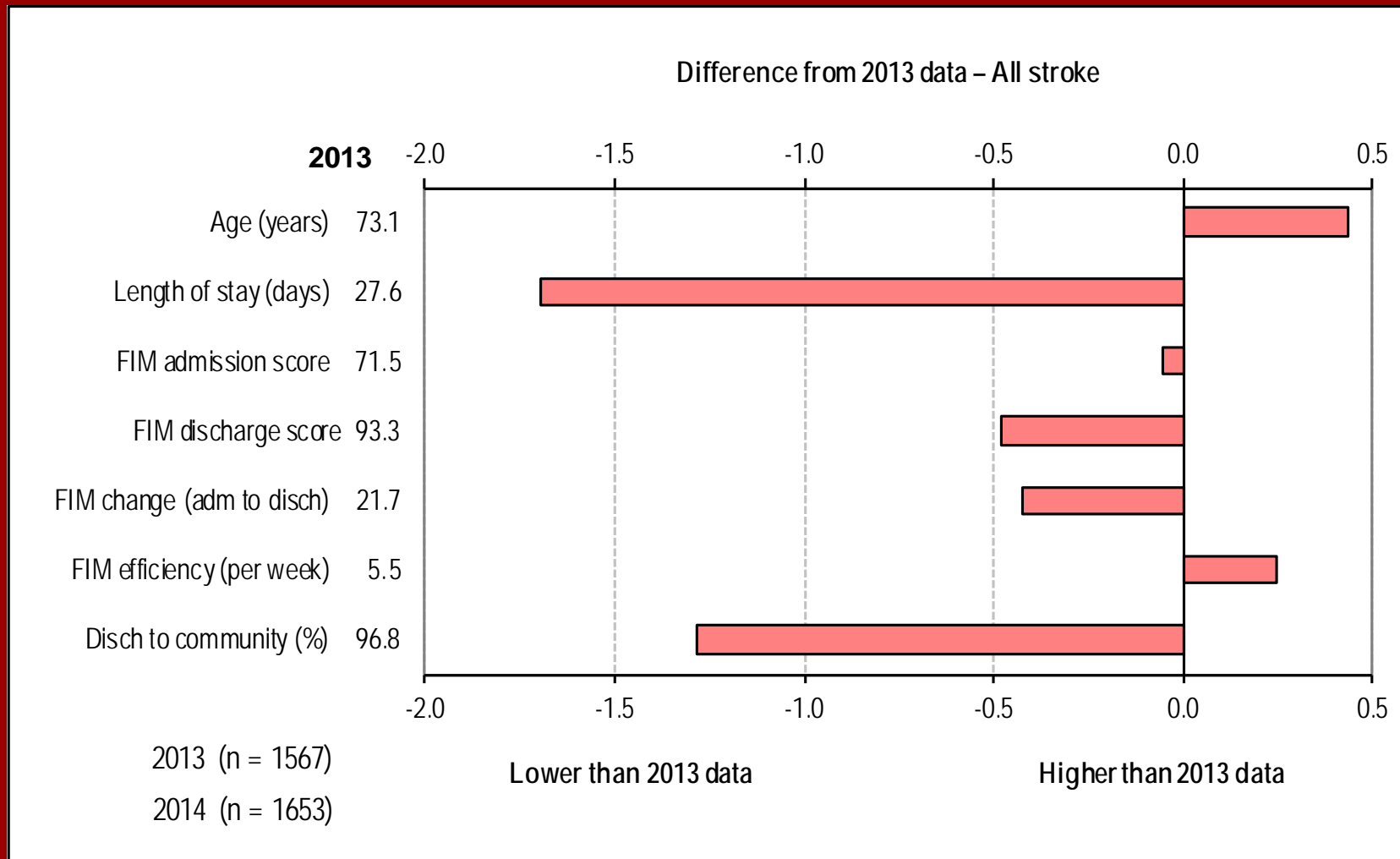
Stroke discharge destination by AN-SNAP class



Stroke LOS and FIM change by AN-SNAP class



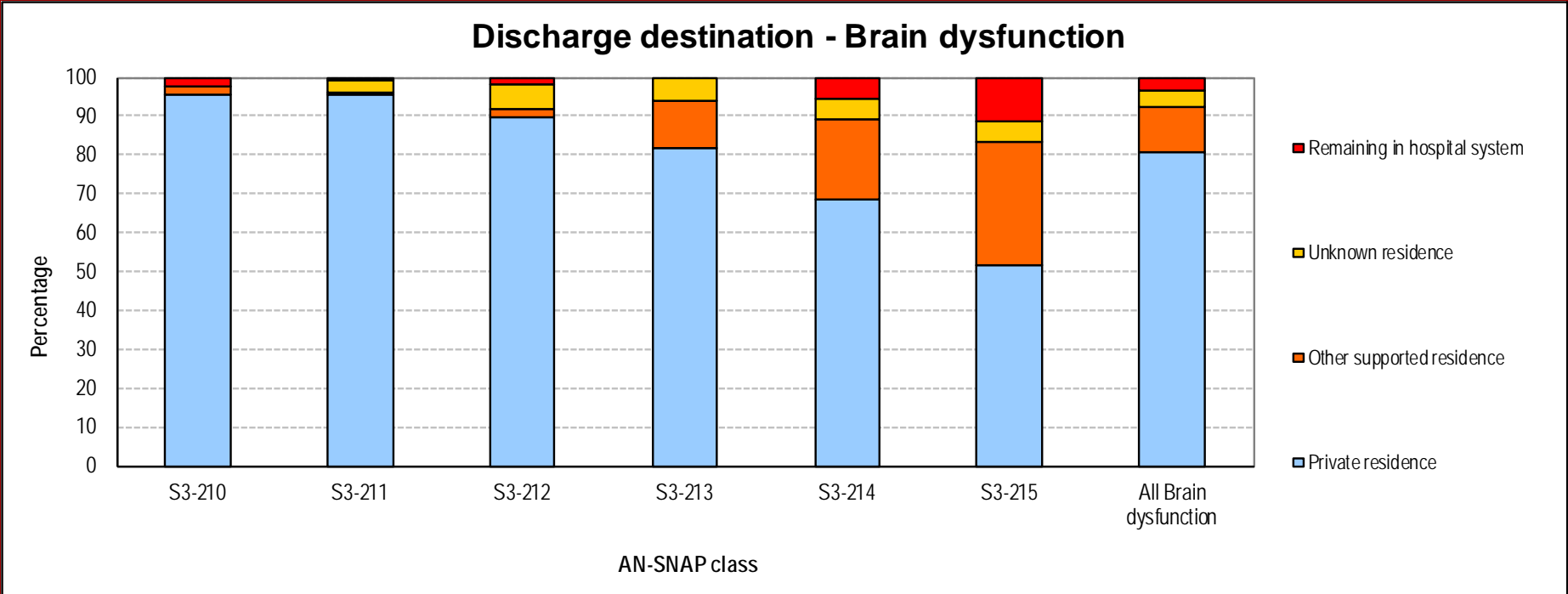
Changes in outcome measures in stroke – 2013 to 2014



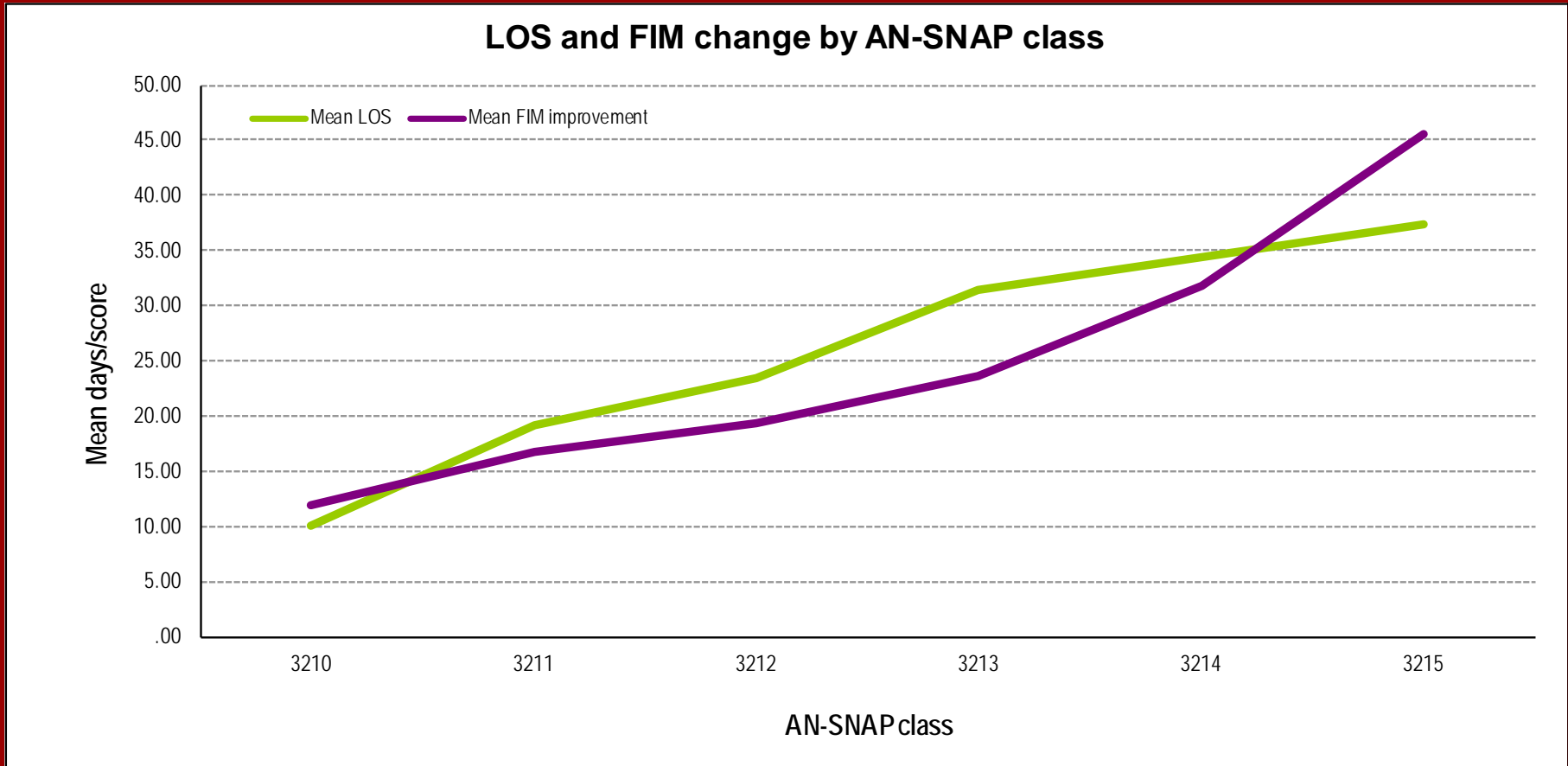
Brain dysfunction episodes in 2014

AN-SNAP class:	S3-210	S3-211	S3-212	S3-213	S3-214	S3-215	All Brain dysfunction
Number of episodes	43	130	49	49	130	54	455
Proportion of episodes	9.5%	28.6%	10.8%	10.8%	28.6%	11.9%	100.0%
Benchmark groups (%)							
<i>Under 65</i>	32.6	25.6	26.5	38.8	60.5	55.6	41.3
<i>65 and over</i>	67.4	74.4	73.5	61.2	39.5	44.4	58.7
Gender (%)							
<i>Female</i>	51.2	33.1	32.7	28.6	46.9	42.6	39.3
<i>Male</i>	48.8	66.9	67.3	71.4	53.1	57.4	60.7
Age (Mean+95%CI)	52.1 (58.9–45.2)	50.6 (54.2–47.0)	51.7 (57.9–45.6)	56.9 (63.1–50.8)	66.1 (69.5–62.8)	64.6 (70.3–58.9)	57.6 (59.6–55.6)
Admission FIM (Mean+95%CI)	109.6 (113.0–106.3)	117.7 (103.5–99.9)	94.7 (97.7–91.8)	84.8 (87.8–81.8)	61.0 (63.4–58.7)	32.4 (34.6–30.3)	80.8 (83.3–78.3)
LOS (Mean+95%CI)	10.1 (12.4–7.9)	19.2 (21.6–16.8)	23.3 (29.0–17.7)	31.4 (38.2–24.6)	34.3 (41.5–27.2)	37.5 (44.5–30.4)	26.4 (29.0–23.8)
Discharge destination (%)							
<i>Discharged to community</i>	97.7	99.2	98.0	100.0	94.6	88.9	96.5
<i>Remaining in hospital system</i>	2.3	0.8	2.0	0.0	5.4	11.1	3.5
FIM improvement (Mean+95%CI)	11.9 (14.9–8.9)	16.7 (18.3–15.0)	19.3 (22.6–16.1)	23.6 (27.9–19.3)	31.7 (35.5–27.9)	45.5 (53.8–37.3)	24.7 (26.5–22.8)
FIM efficiency (FIM imp./LOS)	1.2	0.9	0.8	0.8	0.9	1.2	0.9

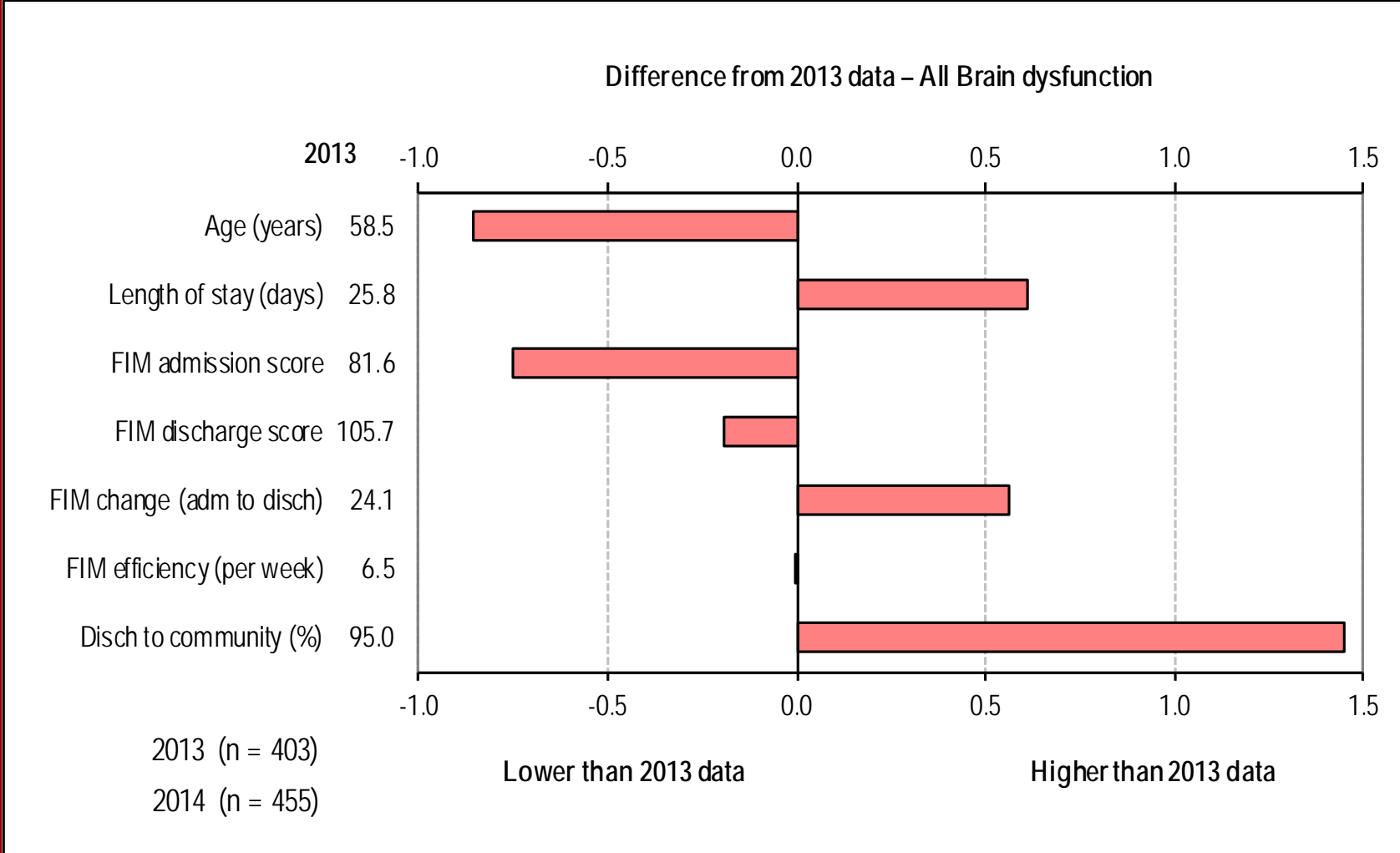
Brain dysfunction discharge destination by AN-SNAP class



Brain dysfunction LOS and FIM change by AN-SNAP class



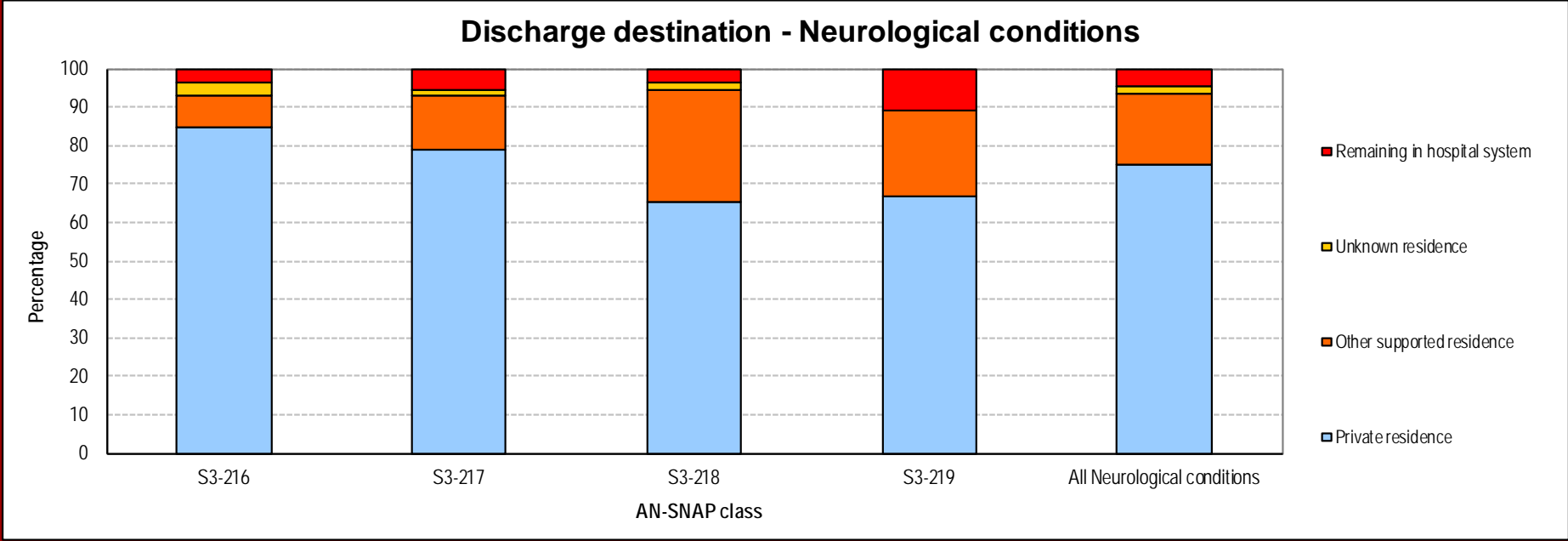
Change in outcome measures in brain dysfunction – 2013 to 2014



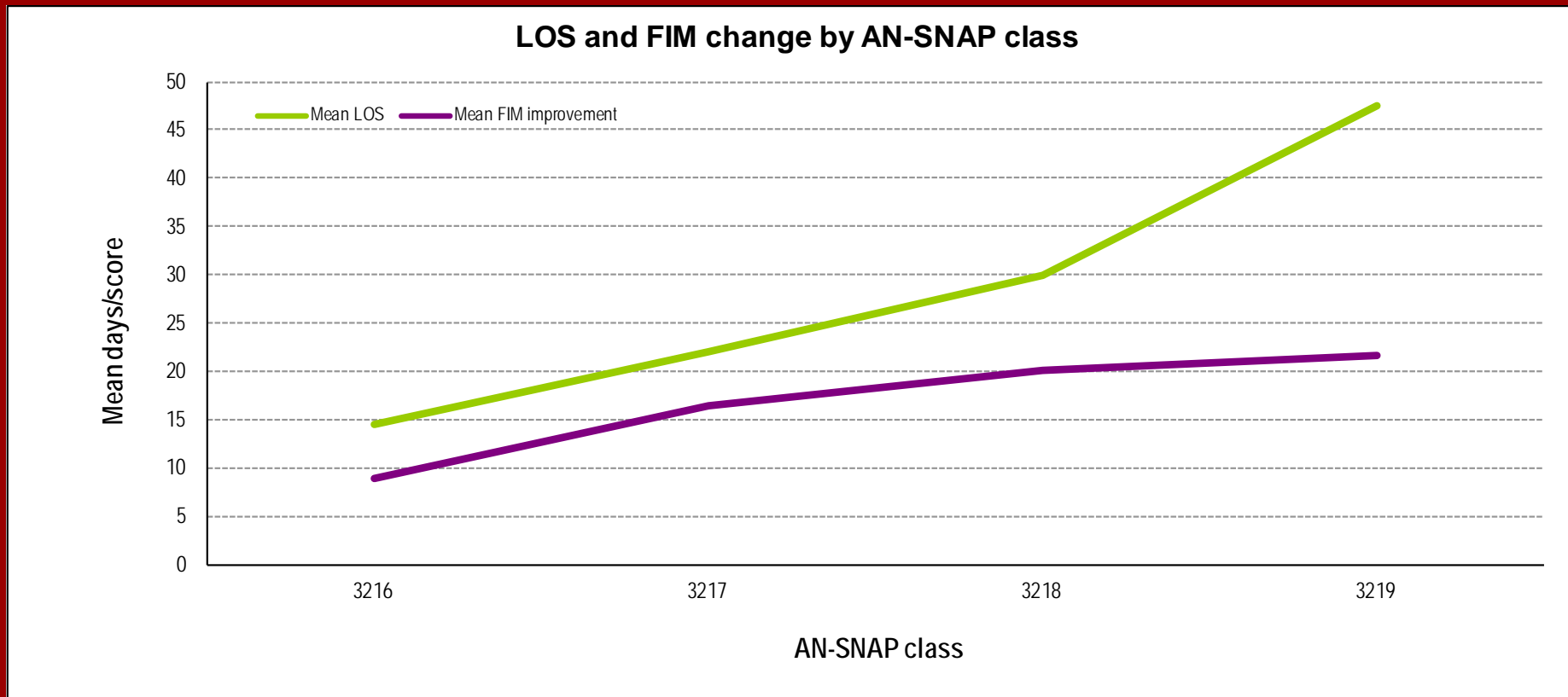
Neurological conditions episodes in 2014

AN-SNAP class:	S3-216	S3-217	S3-218	S3-219	All Neurological conditions
Number of episodes	86	71	107	9	273
Proportion of episodes	31.5%	26.0%	39.2%	3.3%	100.0%
Benchmark groups (%)					
<i>Under 65</i>	48.8	63.4	59.8	55.6	57.1
<i>65 and over</i>	51.2	36.6	40.2	44.4	42.9
Gender (%)					
<i>Female</i>	52.3	49.3	47.7	66.7	50.2
<i>Male</i>	47.7	50.7	52.3	33.3	49.8
Age (Mean+95%CI)	61.2 (64.8–57.7)	68.1 (72.1–64.2)	66.9 (69.7–64.0)	66.3 (75.0–57.7)	65.4 (67.3–63.5)
Admission FIM (Mean+95%CI)	101.7 (103.6–99.8)	83.0 (85.1–80.9)	60.7 (63.1–58.3)	29.8 (38.1–21.5)	78.0 (80.7–75.2)
LOS (Mean+95%CI)	14.5 (16.3–12.7)	22.1 (27.1–17.0)	30.0 (34.7–25.3)	7.4 (109.6–14.7)	23.8 (26.9–20.7)
Discharge destination (%)					
<i>Discharged to community</i>	96.5	94.4	96.3	88.9	95.6
<i>Remaining in hospital system</i>	3.5	5.6	3.7	11.1	4.4
FIM improvement (Mean+95%CI)	8.9 (11.3–6.5)	16.3 (19.0–13.7)	20.0 (23.7–16.4)	21.7 (38.3–5.0)	15.7 (17.6–13.8)
FIM efficiency (FIM imp./LOS)	0.6	0.7	0.7	0.5	0.7

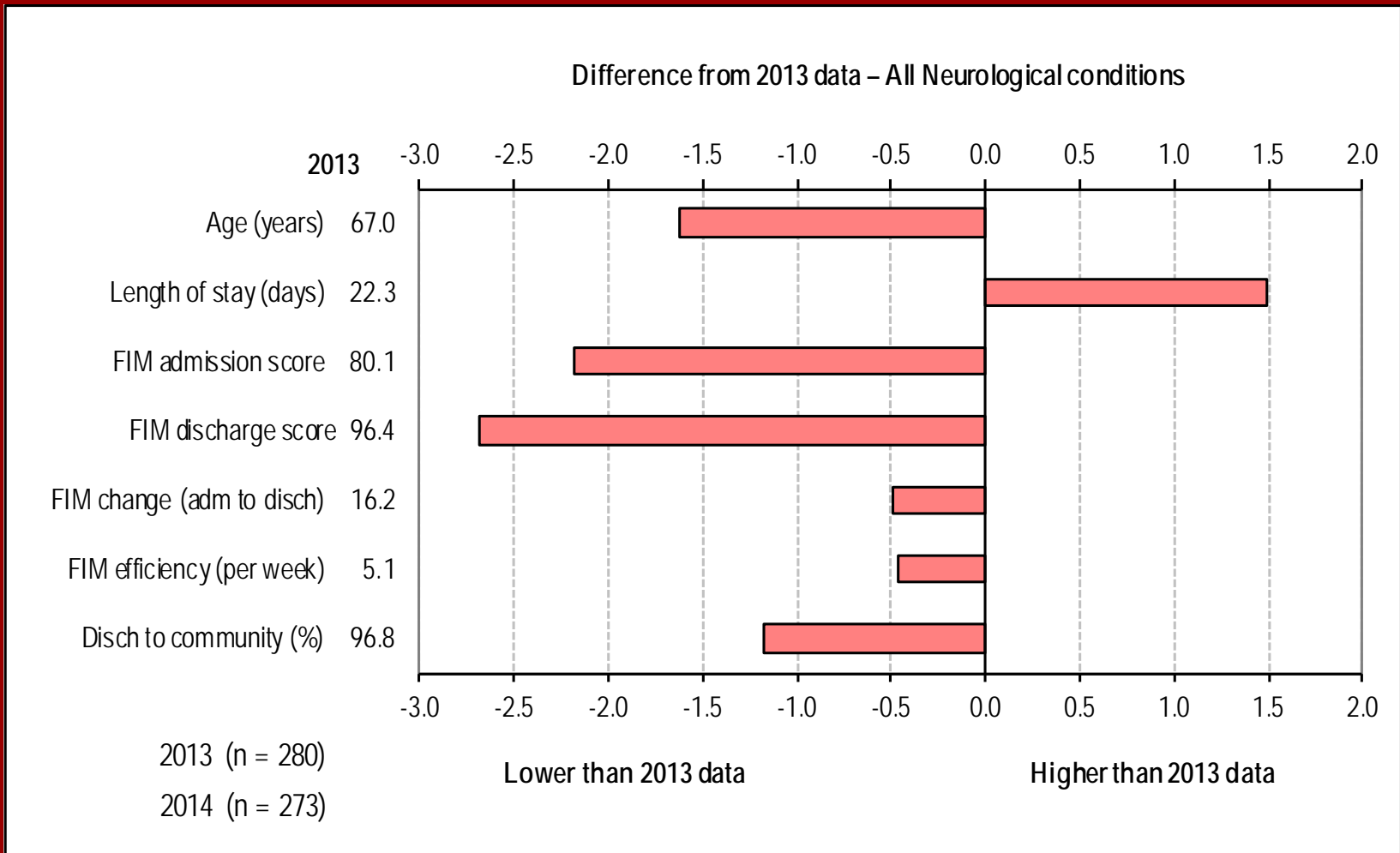
Neurological conditions discharge destination by AN-SNAP class



Neurological conditions LOS and FIM change by AN-SNAP class



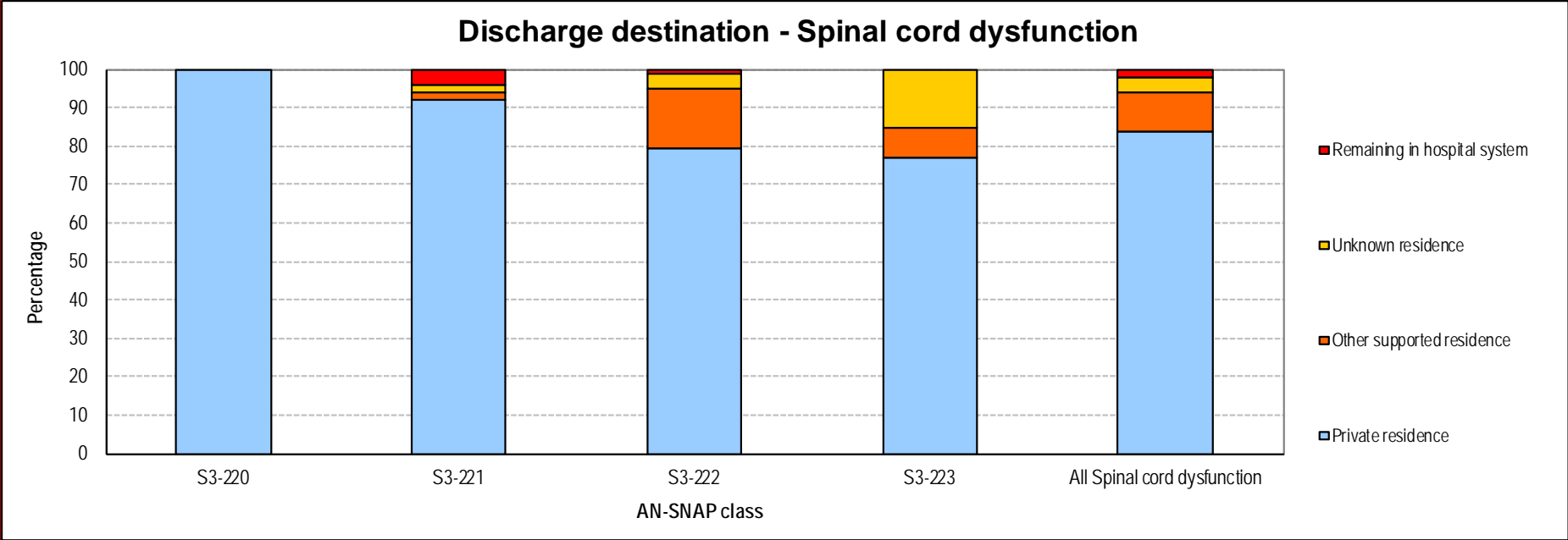
Change in outcome measures in neurological conditions - 2013 to 2014



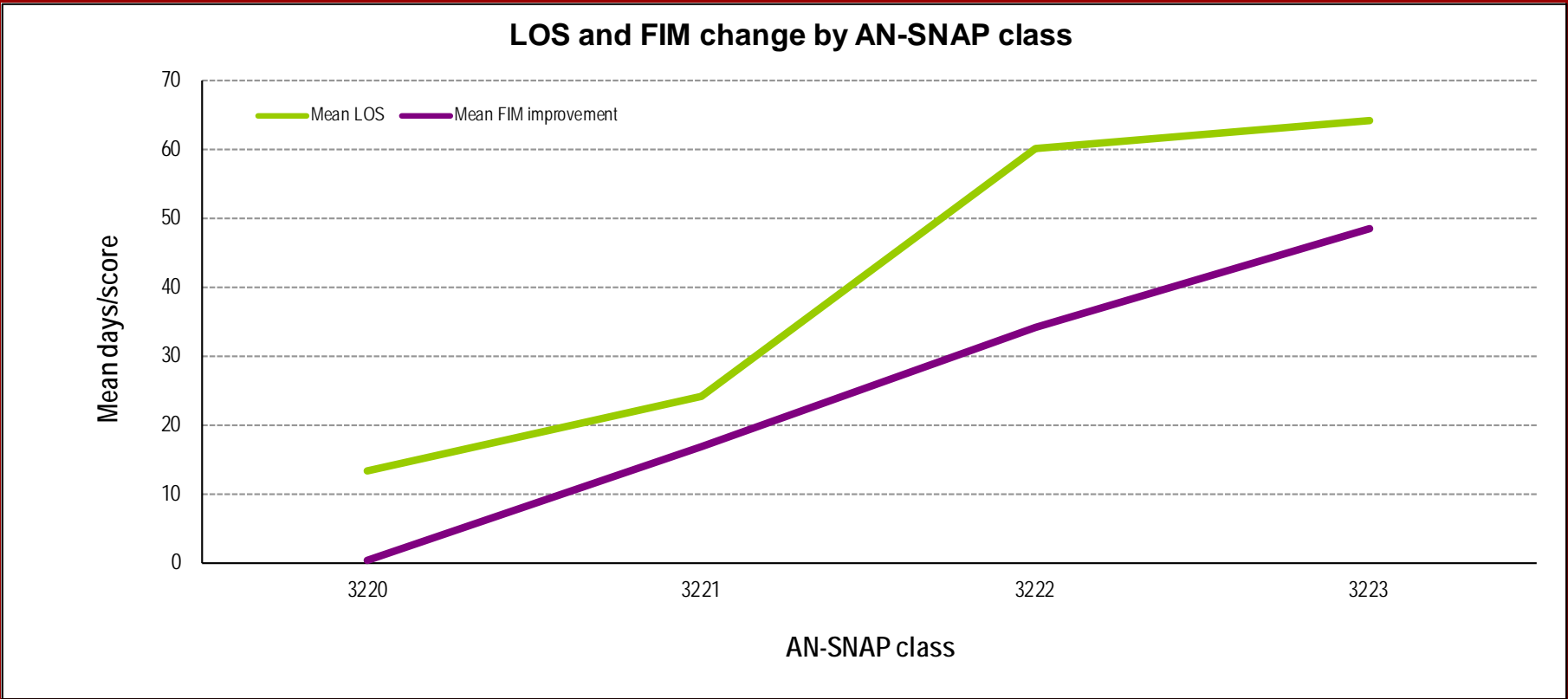
Spinal cord dysfunction episodes in 2014

AN-SNAP class:	S3-220	S3-221	S3-222	S3-223	All Spinal cord dysfunction
Number of episodes	n<5	49	82	13	147
Proportion of episodes		34.0%	56.9%	9.0%	100.0%
Benchmark groups (%)					
<i>Under 65</i>	n.a.	26.5	45.1	0.0	34.0
<i>65 and over</i>		73.5	54.9	100.0	66.0
Gender (%)					
<i>Female</i>	n.a.	38.8	43.9	30.8	40.8
<i>Male</i>		61.2	56.1	69.2	59.2
Age (Mean+95%CI)	n.a.	52.9 (57.4–48.5)	62.0 (65.1–58.8)	22.5 (25.8–19.3)	54.9 (57.9–52.0)
Admission FIM (Mean+95%CI)	n.a.	96.4 (99.6–93.2)	57.9 (60.3–55.5)	63.6 (68.5–58.7)	72.0 (75.6–68.5)
LOS (Mean+95%CI)	n.a.	24.1 (30.0–18.1)	60.1 (68.7–51.5)	63.9 (85.0–42.9)	47.9 (54.0–41.7)
Discharge destination (%)					
<i>Discharged to community</i>	n.a.	95.9	98.8	100.0	98.0
<i>Remaining in hospital system</i>		4.1	1.2	0.0	2.0
FIM improvement (Mean+95%CI)	n.a.	16.8 (20.6–12.9)	34.1 (38.5–29.6)	48.4 (58.9–37.9)	29.1 (32.5–25.7)
FIM efficiency (FIM imp./LOS)	n.a.	0.7	0.6	0.8	0.6

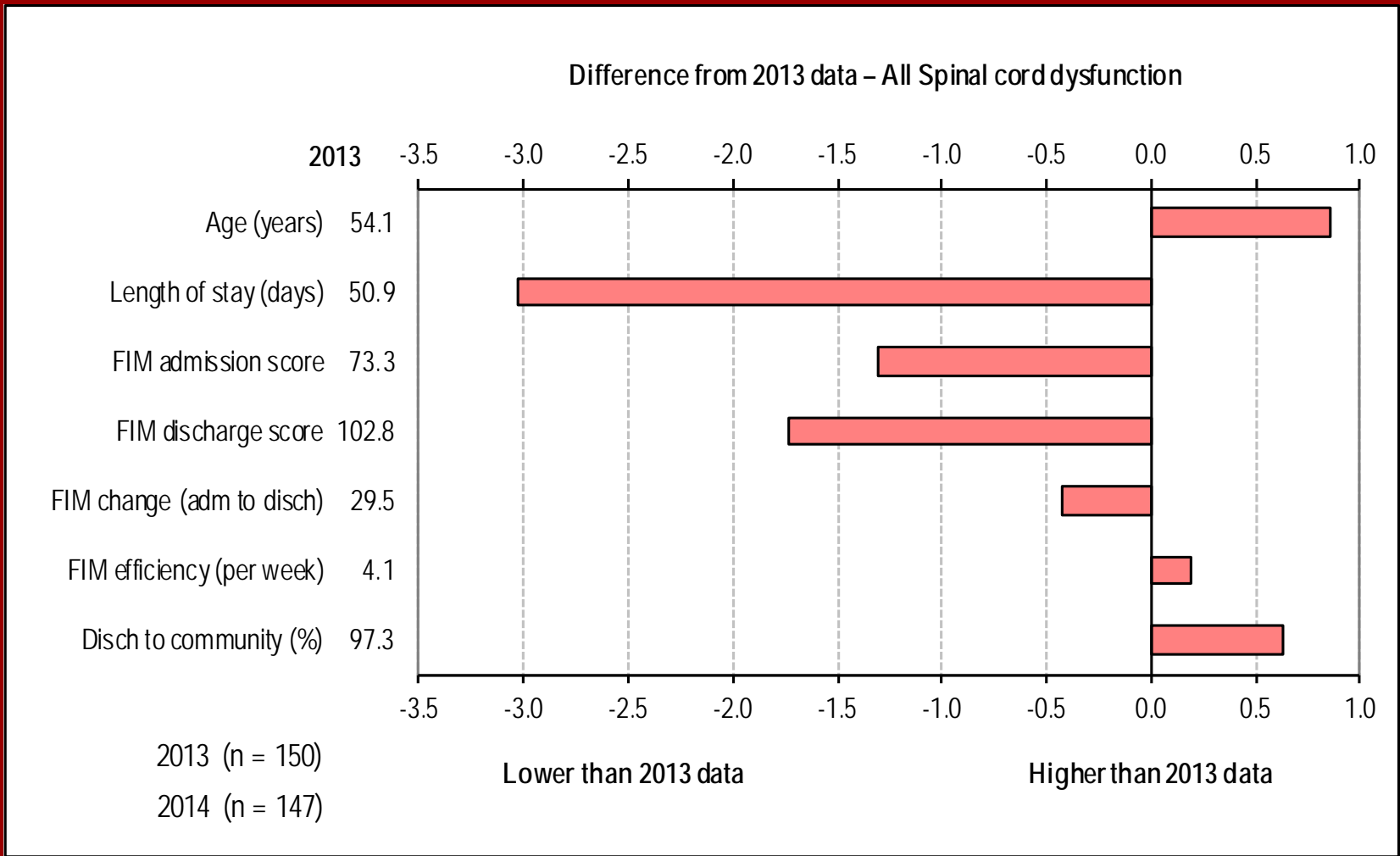
Spinal cord dysfunction discharge destination by AN-SNAP class



Spinal cord dysfunction LOS and FIM change by AN-SNAP class



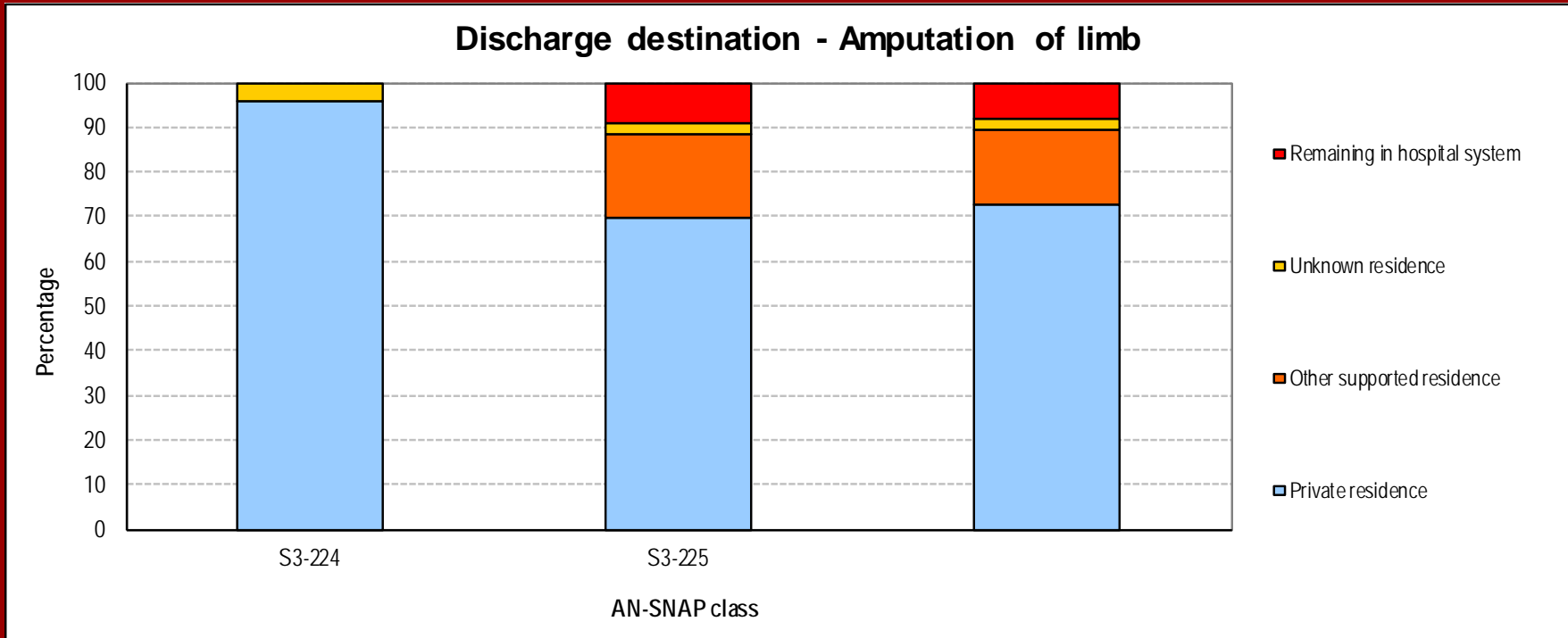
Change in outcome measures in spinal cord dysfunction - 2013 to 2014



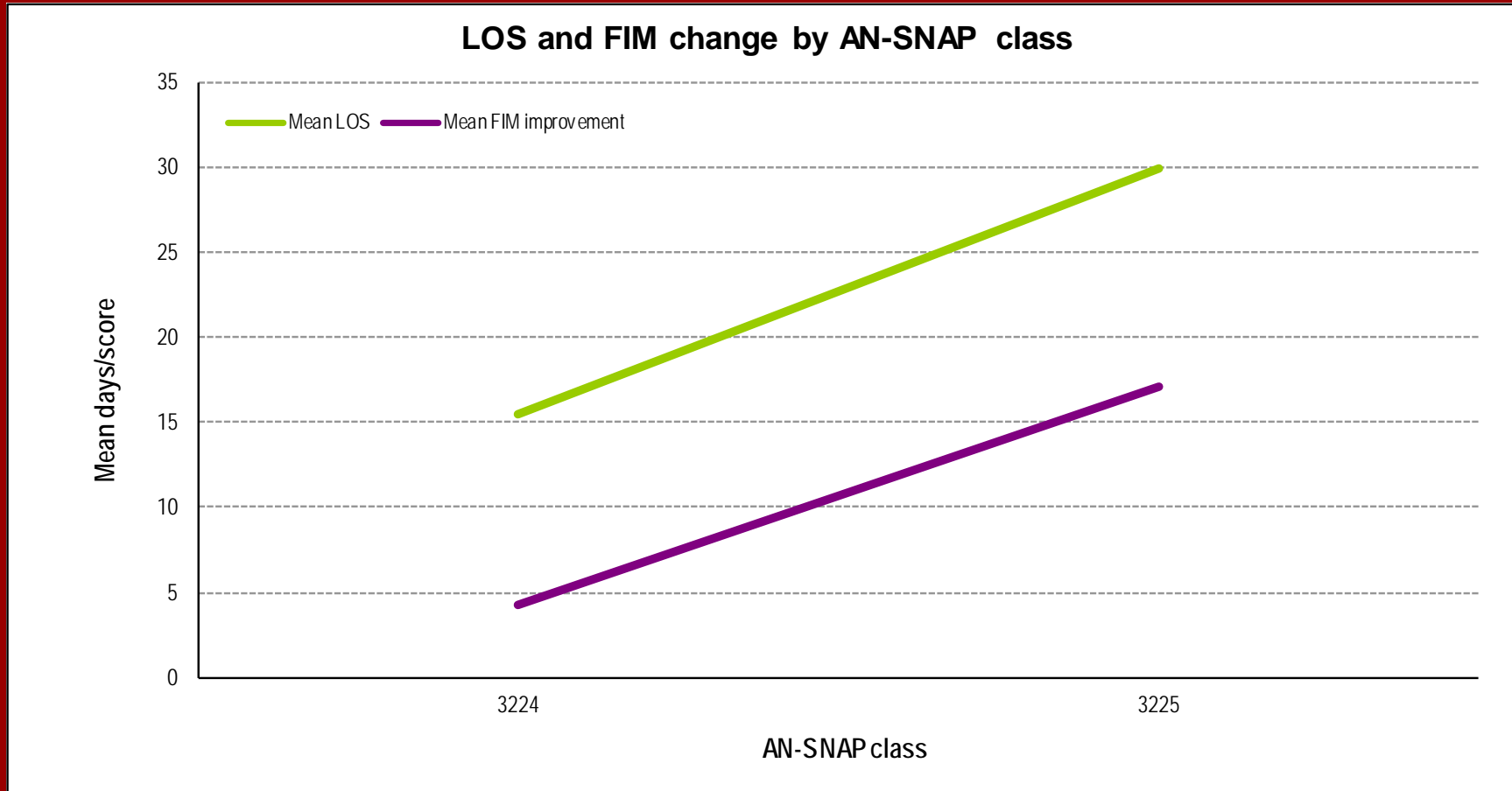
Amputation episodes in 2014

AN-SNAP class:	S3-224	S3-225	All Amputation of limb
Number of episodes	23	184	207
Proportion of episodes	11.1%	88.9%	100.0%
Benchmark groups (%)			
<i>Under 65</i>	30.4	63.7	60.0
<i>65 and over</i>	69.6	36.3	40.0
Gender (%)			
<i>Female</i>	39.1	42.4	42.0
<i>Male</i>	60.9	57.6	58.0
Age (Mean+95%CI)	55.7 (62.6–48.9)	68.0 (69.9–66.1)	66.6 (68.5–64.7)
Admission FIM (Mean+95%CI)	110.3 (112.0–108.6)	75.6 (78.5–72.6)	79.5 (82.5–76.4)
LOS (Mean+95%CI)	15.5 (20.1–10.9)	29.9 (32.9–26.9)	28.2 (31.0–25.5)
Discharge destination (%)			
<i>Discharged to community</i>	100.0	90.8	91.8
<i>Remaining in hospital system</i>	0.0	9.2	8.2
FIM improvement (Mean+95%CI)	4.2 (5.6–2.8)	17.1 (19.2–15.0)	15.6 (17.6–13.7)
FIM efficiency (FIM imp./LOS)	0.3	0.6	0.6

Amputation discharge destination by AN-SNAP class



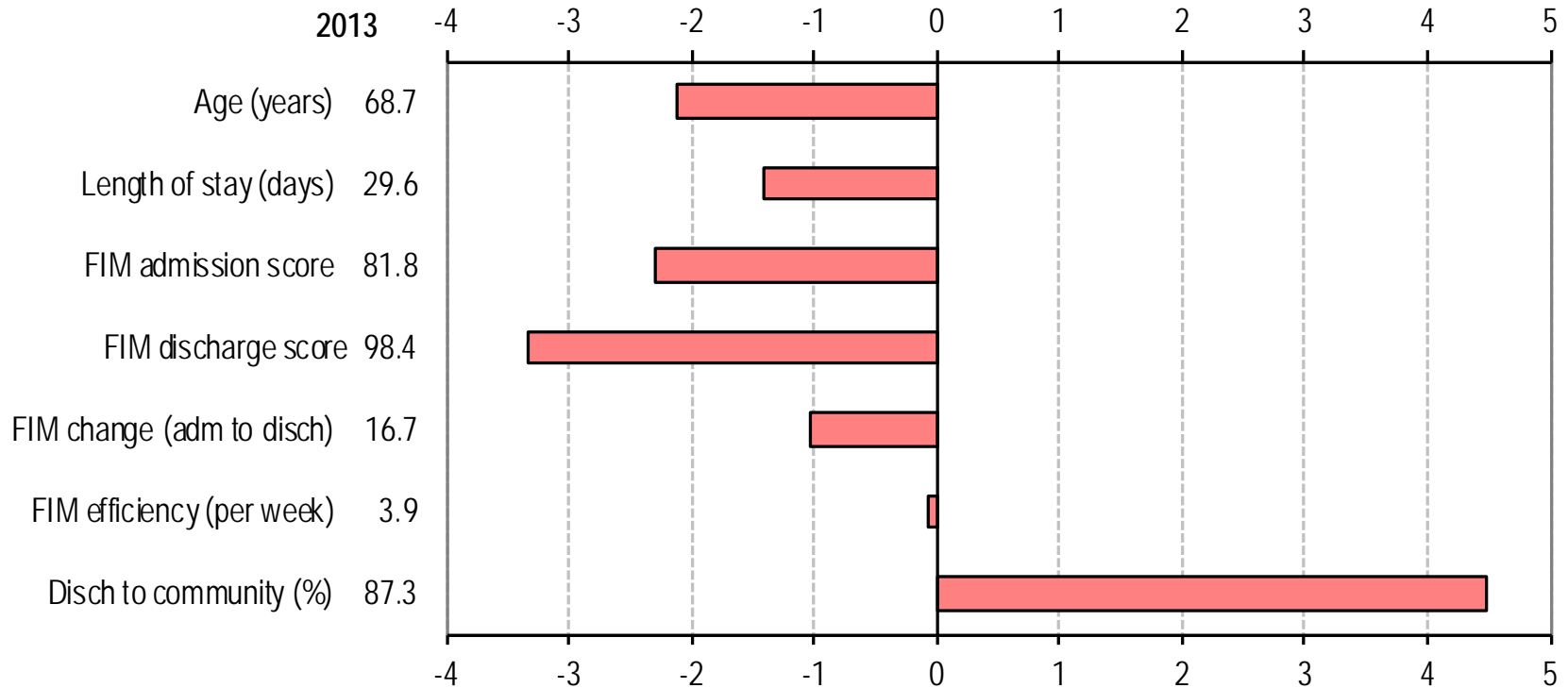
Amputation LOS and FIM change by AN-SNAP class



Change in outcome measures in amputation – 2013 to 2014



Difference from 2013 data – All Amputation of limb



2013 (n = 205)

2014 (n = 207)

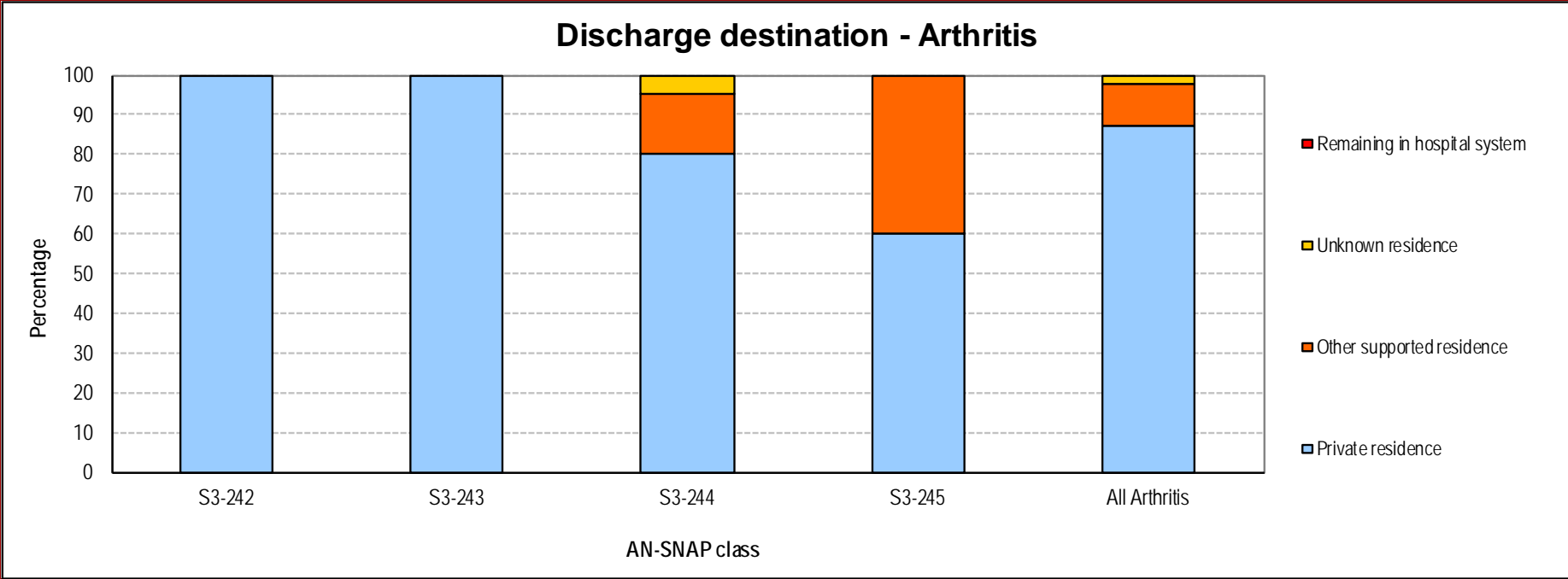
Lower than 2013 data

Higher than 2013 data

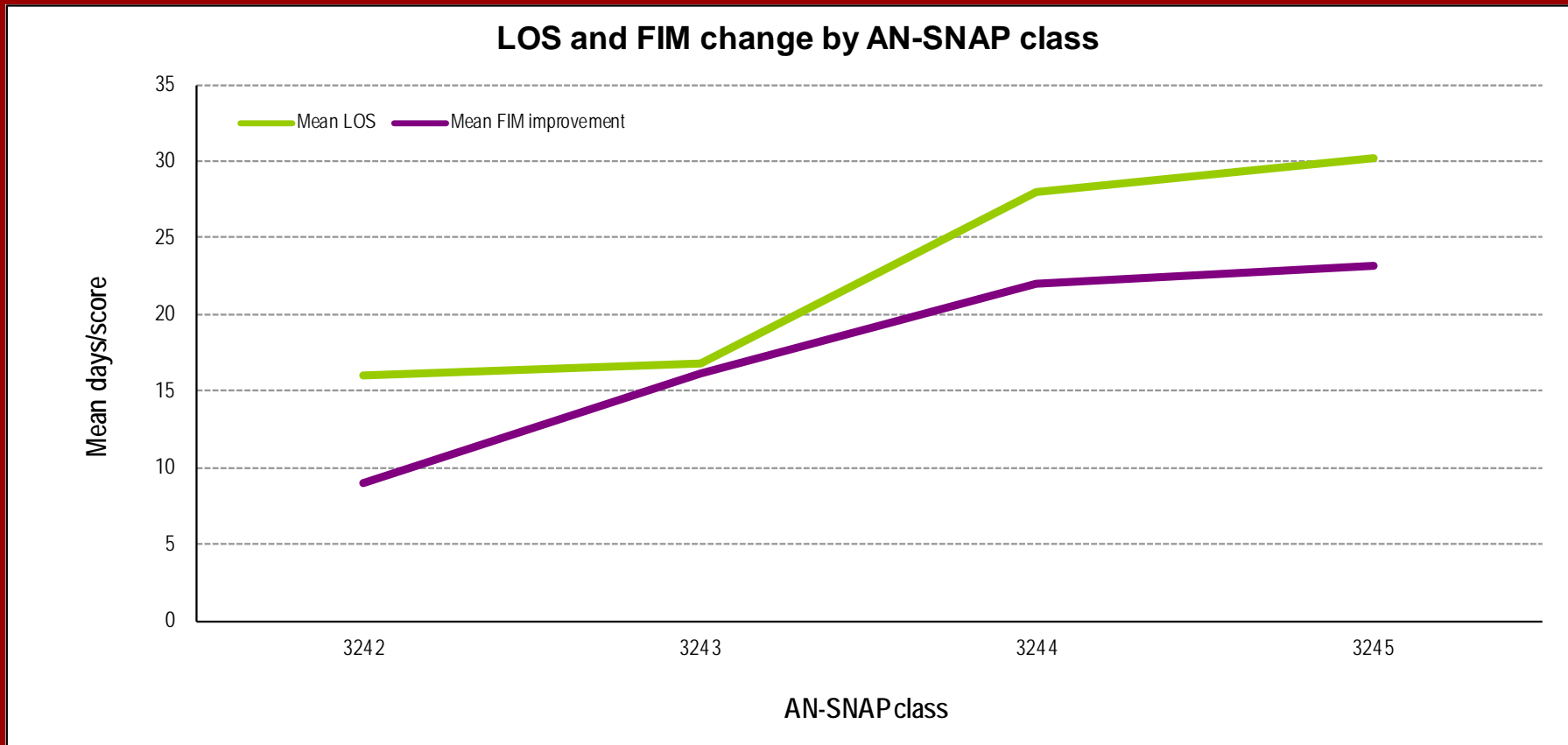
Arthritis episodes in 2014

AN-SNAP class:	S3-242	S3-243	S3-244	S3-245	All Arthritis
Number of episodes	12	10	20	5	47
Proportion of episodes	25.5%	21.3%	42.6%	10.6%	100.0%
Benchmark groups (%)					
<i>Under 65</i>	91.7	80.0	85.0	60.0	83.0
<i>65 and over</i>	8.3	20.0	15.0	40.0	17.0
Gender (%)					
<i>Female</i>	91.7	60.0	70.0	80.0	74.5
<i>Male</i>	8.3	40.0	30.0	20.0	25.5
Age (Mean+95%CI)	77.2 (88.1–66.2)	75.2 (85.0–65.4)	76.9 (84.7–69.1)	67.4 (95.4–39.4)	75.6 (80.5–70.7)
Admission FIM (Mean+95%CI)	103.1 (106.6–99.5)	85.9 (94.4–77.5)	66.3 (72.6–60.0)	40.2 (53.7–26.7)	77.1 (83.7–70.5)
LOS (Mean+95%CI)	16.0 (21.5–10.5)	16.8 (28.2–5.4)	28.0 (38.7–17.2)	30.2 (57.4–3.0)	22.8 (28.4–17.2)
Discharge destination (%)					
<i>Discharged to community</i>	100.0	100.0	100.0	100.0	100.0
<i>Remaining in hospital system</i>	0.0	0.0	0.0	0.0	0.0
FIM improvement (Mean+95%CI)	9.0 (13.0–5.0)	16.1 (19.4–12.8)	22.0 (30.0–14.0)	23.2 (47.4–1.0)	17.6 (21.7–13.4)
FIM efficiency (FIM imp./LOS)	0.6	1.0	0.8	0.8	0.8

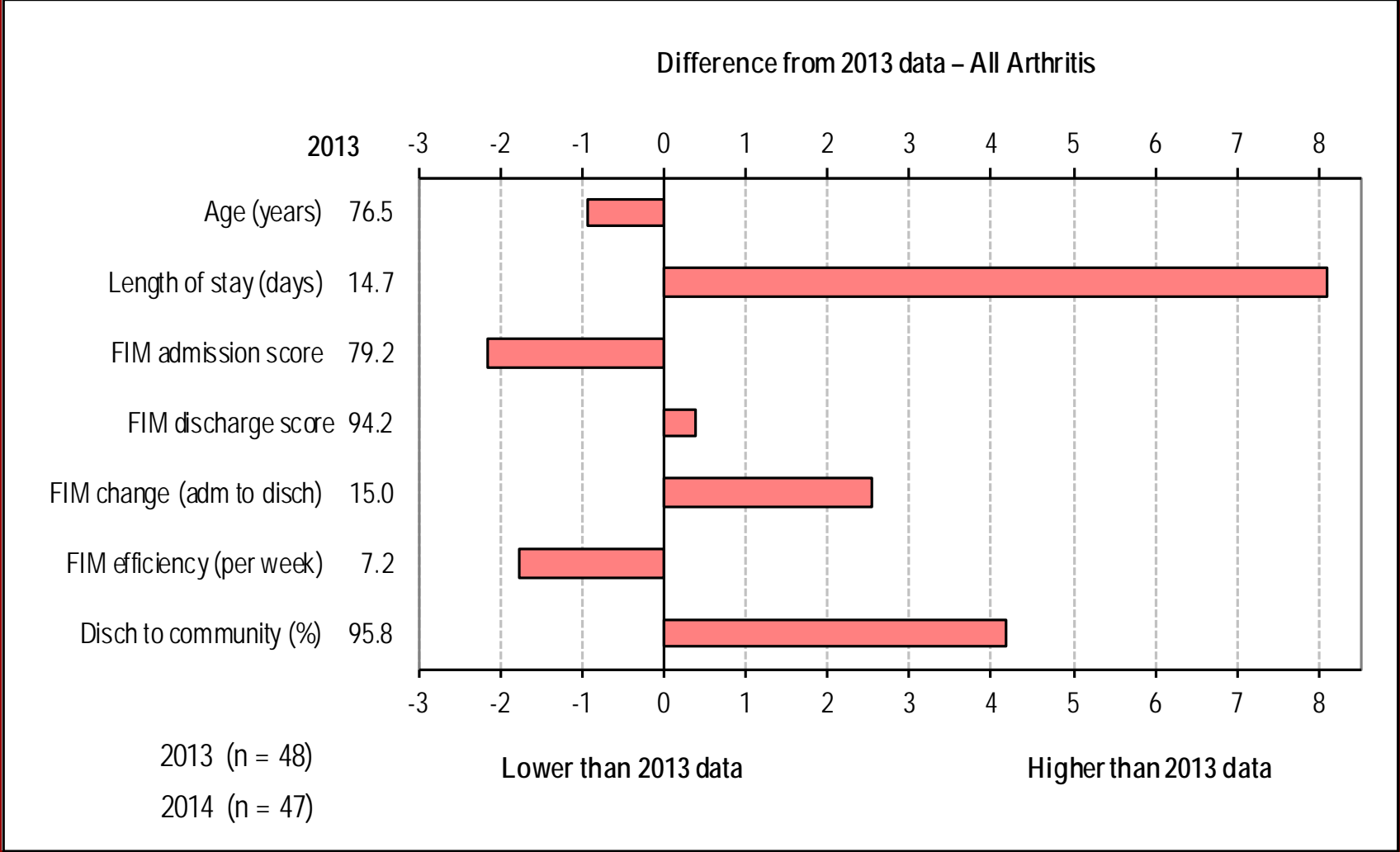
Arthritis discharge destination by AN-SNAP class



Arthritis LOS and FIM change by AN-SNAP class



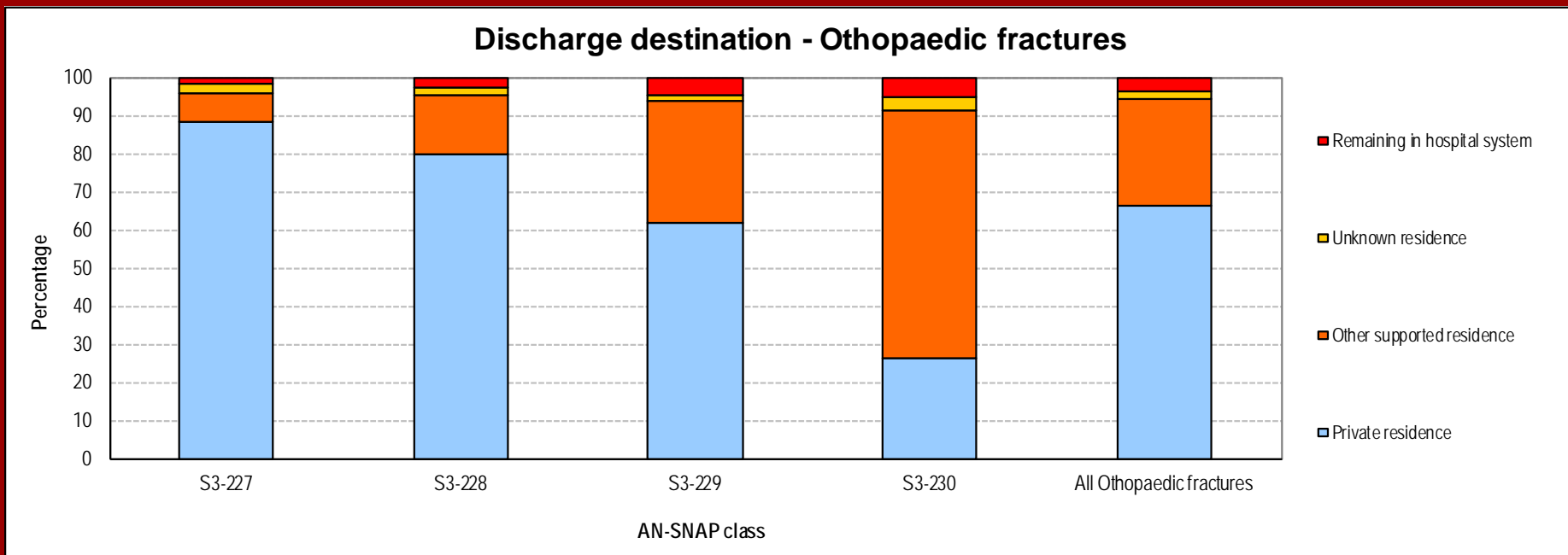
Change in outcome measures in arthritis – 2013 to 2014



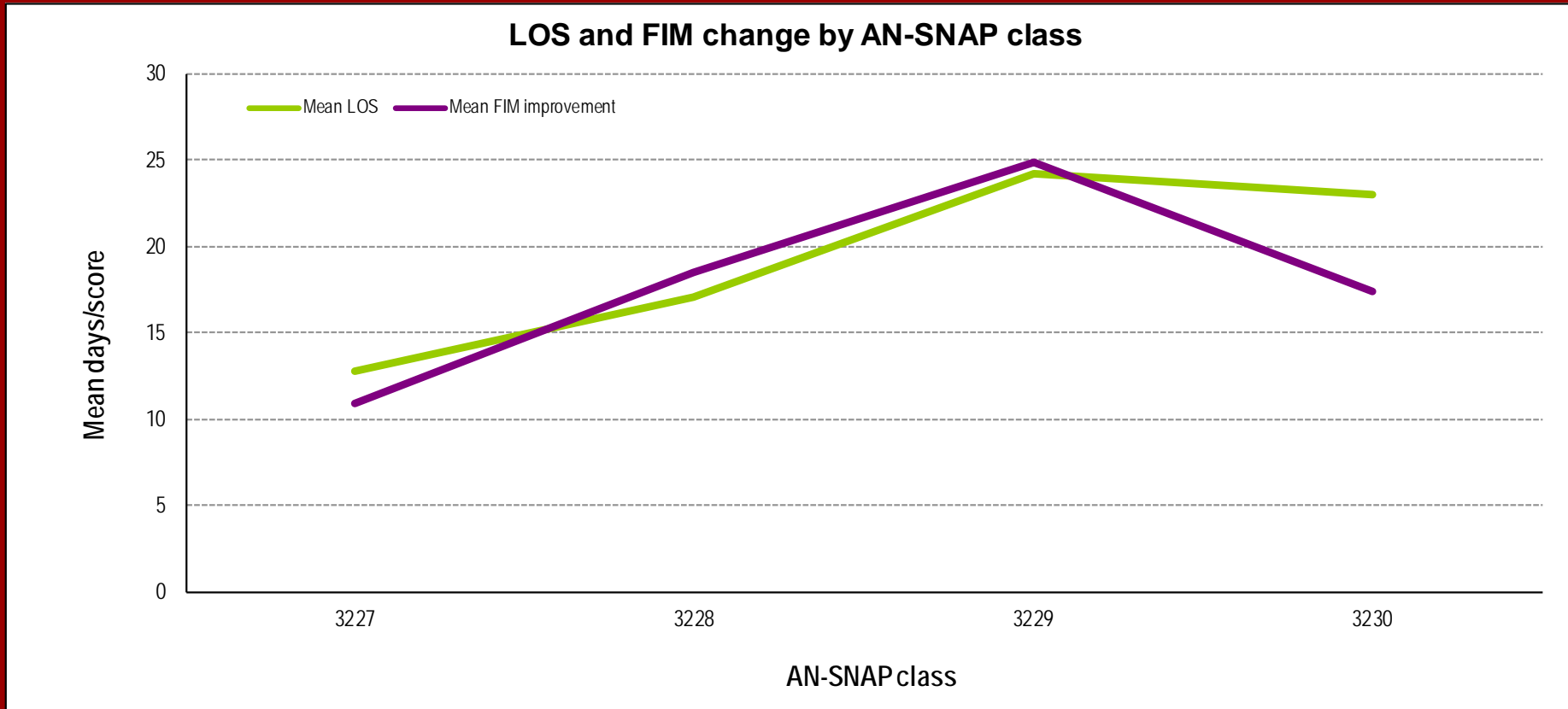
Orthopaedic fracture episodes in 2014

AN-SNAP class:	S3-227	S3-228	S3-229	S3-230	All Orthopaedic fractures
Number of episodes	880	758	1,277	564	3,479
Proportion of episodes	25.3%	21.8%	36.7%	16.2%	100.0%
Benchmark groups (%)					
<i>Under 65</i>	93.6	96.9	96.2	97.5	95.9
<i>65 and over</i>	6.4	3.1	3.8	2.5	4.1
Gender (%)					
<i>Female</i>	75.3	76.0	74.5	72.3	74.7
<i>Male</i>	24.7	24.0	25.5	27.7	25.3
Age (Mean+95%CI)	79.5 (80.2–78.8)	82.2 (82.8–81.5)	83.4 (83.9–82.9)	85.8 (86.5–85.2)	82.6 (82.9–82.2)
Admission FIM (Mean+95%CI)	97.1 (97.7–96.5)	80.6 (81.1–80.1)	62.9 (63.5–62.3)	38.8 (39.7–37.8)	71.8 (72.5–71.0)
LOS (Mean+95%CI)	12.8 (13.4–12.2)	17.0 (17.8–16.2)	24.1 (25.0–23.3)	23.0 (24.3–21.6)	19.5 (19.9–19.0)
Discharge destination (%)					
<i>Discharged to community</i>	98.1	97.4	95.3	94.5	96.3
<i>Remaining in hospital system</i>	1.9	2.6	4.7	5.5	3.7
FIM improvement (Mean+95%CI)	10.8 (11.4–10.3)	18.4 (19.1–17.7)	24.8 (25.7–24.0)	17.3 (18.8–15.9)	18.6 (19.1–18.2)
FIM efficiency (FIM imp./LOS)	0.8	1.1	1.0	0.8	1.0

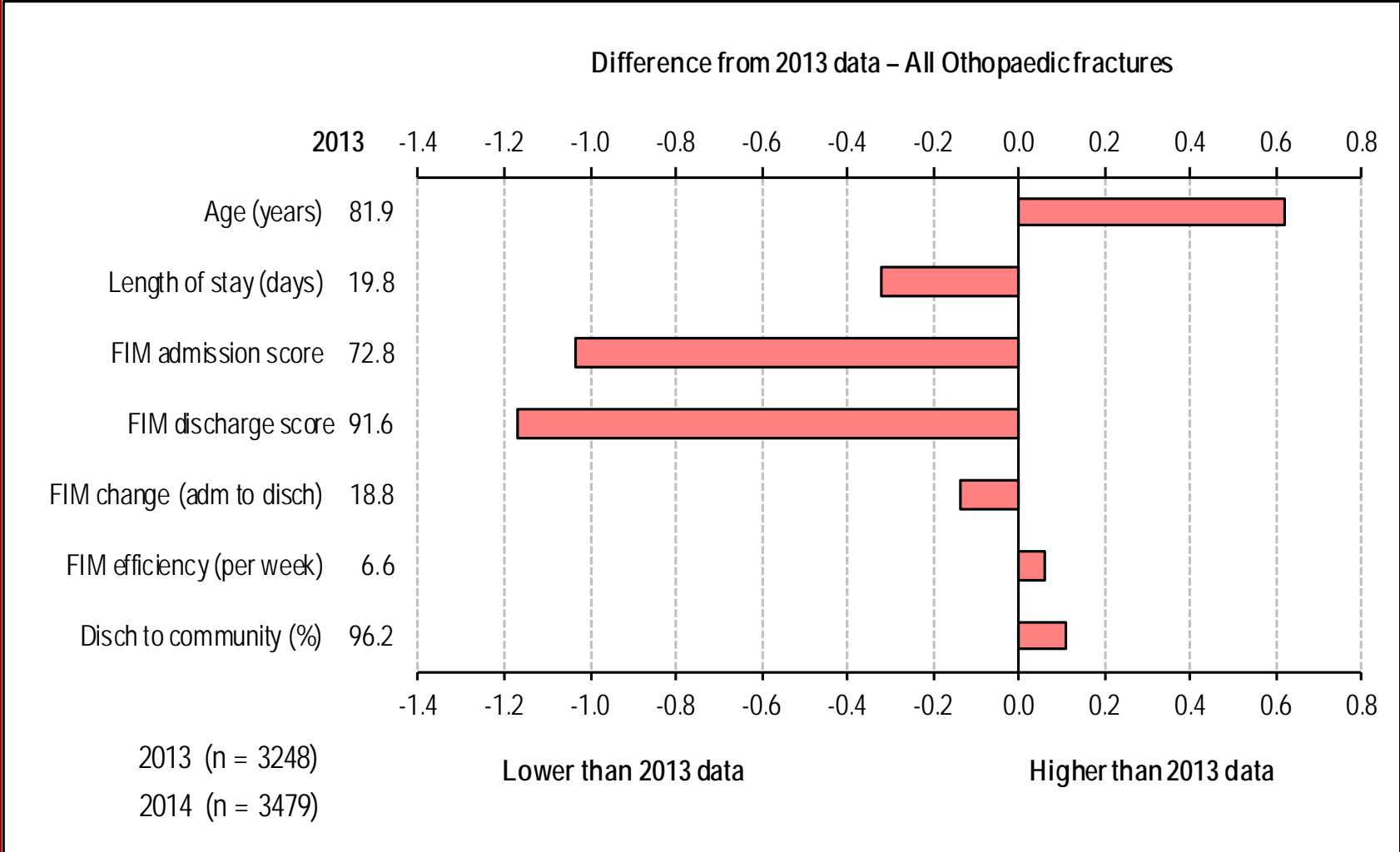
Orthopaedic fracture discharge destination by AN-SNAP class



Orthopaedic fracture LOS and FIM change by AN-SNAP class



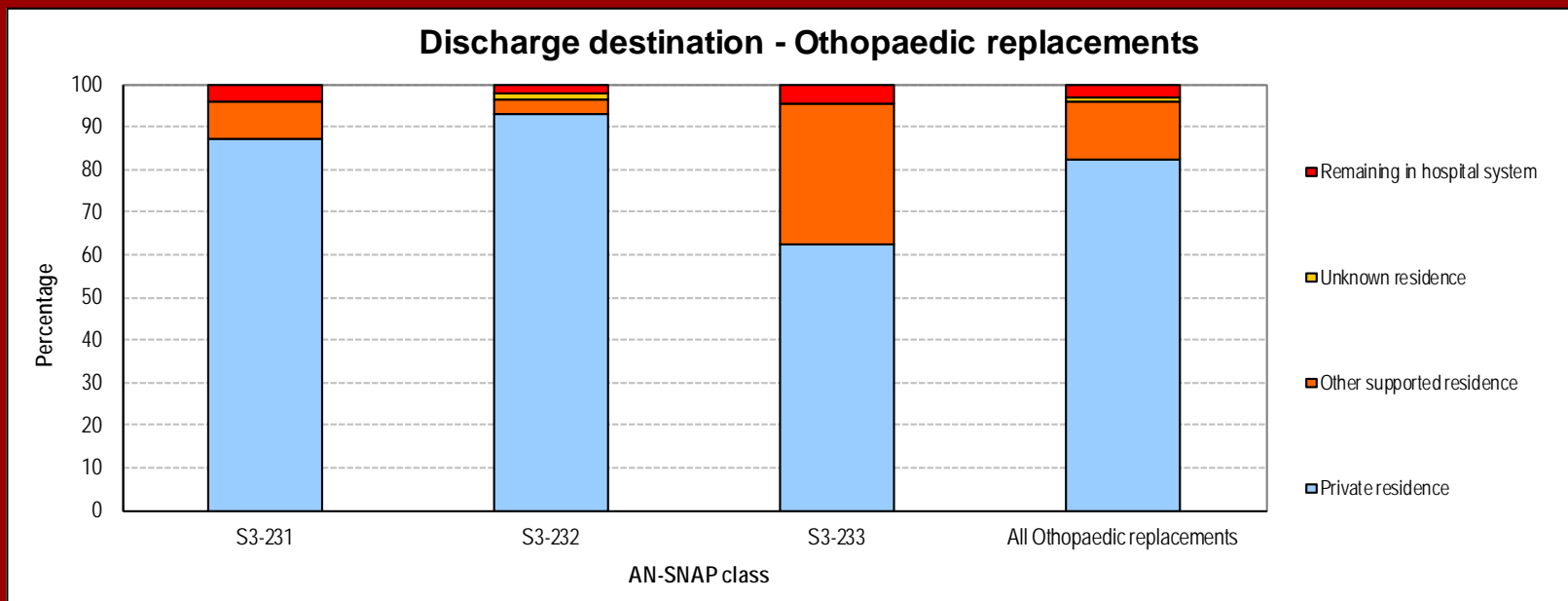
Change in outcome measures in orthopaedic fracture – 2013 to 2014



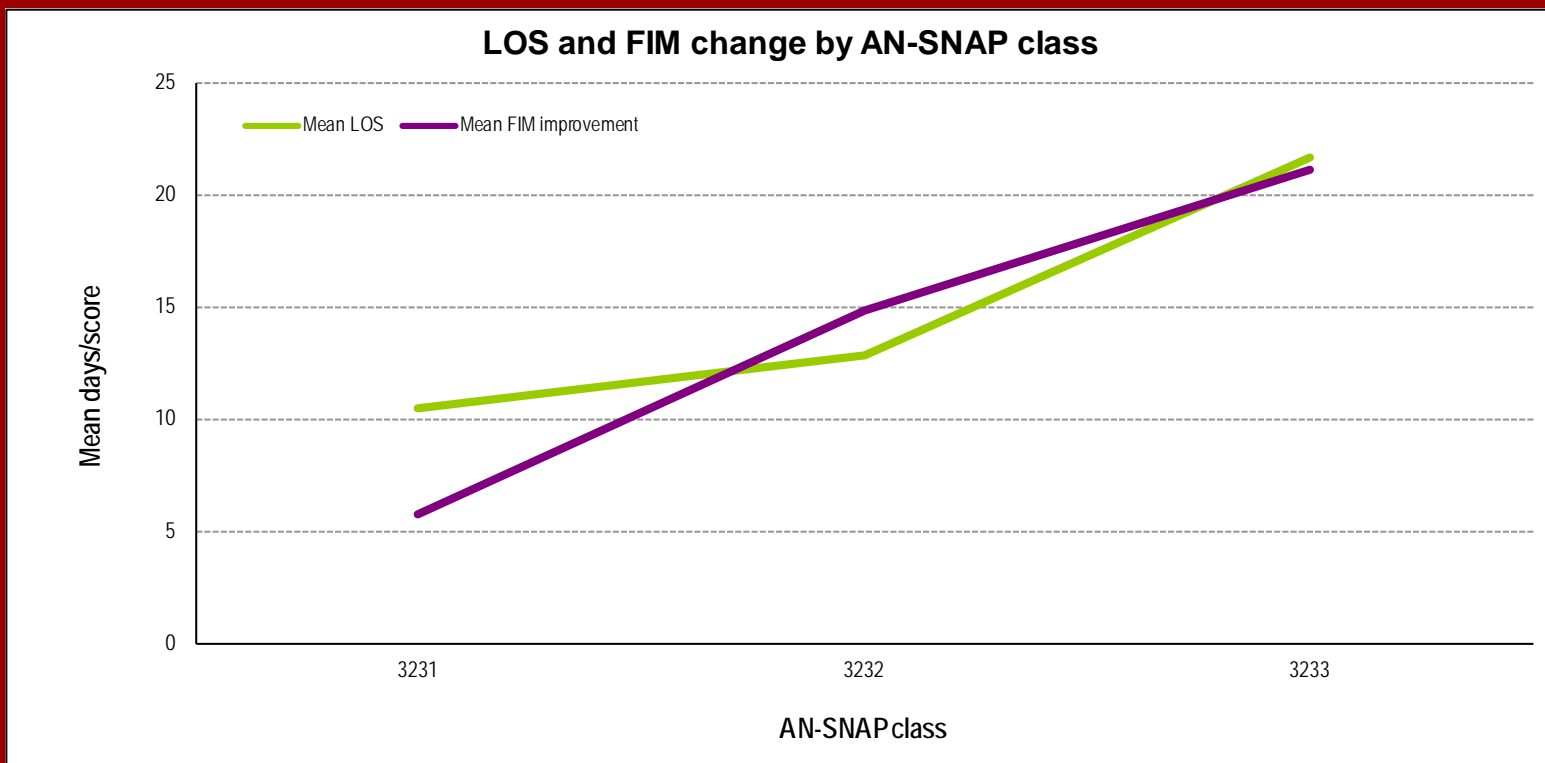
Orthopaedic replacement episodes in 2014

AN-SNAP class:	S3-231	S3-232	S3-233	All Othopaedic replacements
Number of episodes	23	190	109	322
Proportion of episodes	7.1%	59.0%	33.9%	100.0%
Benchmark groups (%)				
<i>Under 65</i>	87.0	93.6	95.4	93.7
<i>65 and over</i>	13.0	6.4	4.6	6.3
Gender (%)				
<i>Female</i>	47.8	60.5	67.0	61.8
<i>Male</i>	52.2	39.5	33.0	38.2
Age (Mean+95%CI)	77.4 (82.2–72.5)	78.0 (79.3–76.7)	81.9 (83.5–80.2)	79.3 (80.3–78.3)
Admission FIM (Mean+95%CI)	106.8 (109.5–104.1)	90.0 (91.3–88.7)	60.0 (63.0–57.0)	81.2 (83.3–79.0)
LOS (Mean+95%CI)	10.4 (13.0–7.9)	12.8 (14.1–11.5)	21.6 (24.3–18.9)	15.6 (16.9–14.3)
Discharge destination (%)				
<i>Discharged to community</i>	95.7	97.9	95.4	96.9
<i>Remaining in hospital system</i>	4.3	2.1	4.6	3.1
FIM improvement (Mean+95%CI)	5.7 (7.2–4.2)	14.8 (16.1–13.6)	21.1 (24.1–18.1)	16.3 (17.6–15.0)
FIM efficiency (FIM imp./LOS)	0.6	1.2	1.0	1.0

Orthopaedic replacement discharge destination by AN-SNAP class

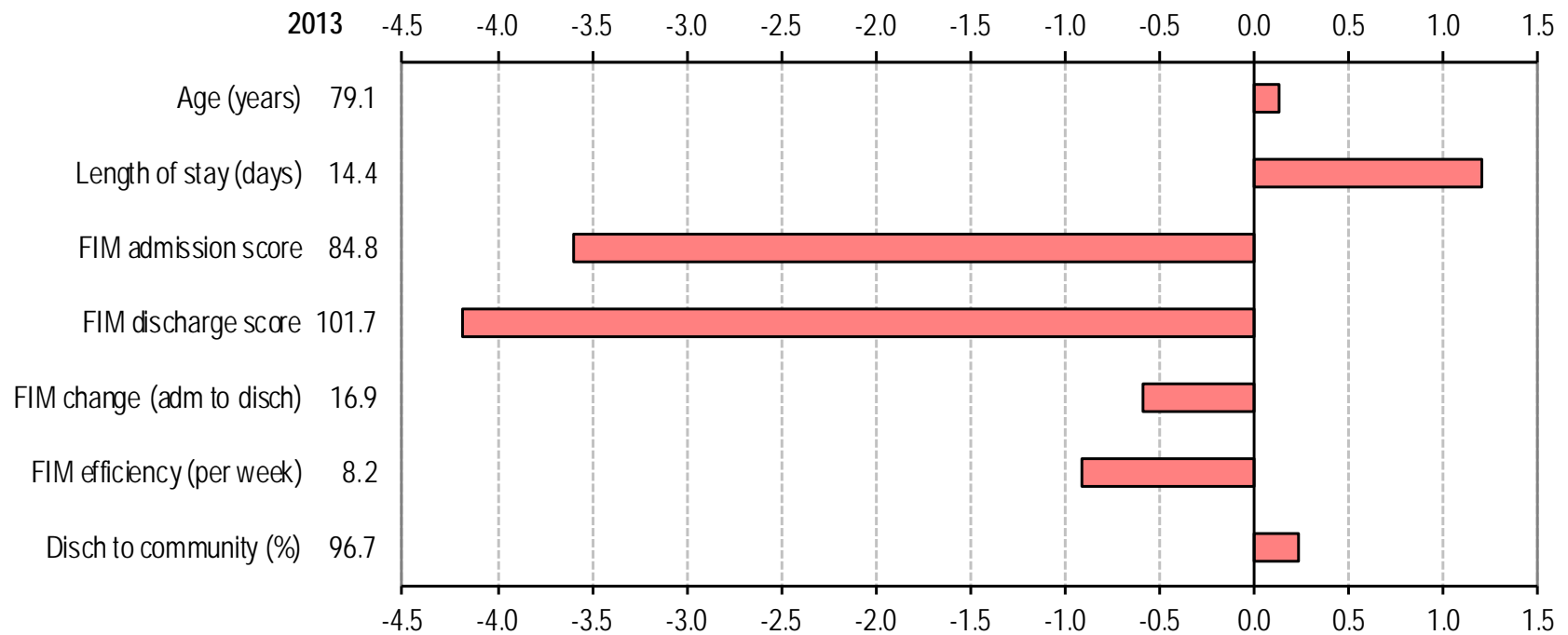


Orthopaedic replacement LOS and FIM change by AN-SNAP class



Change in outcome measures in orthopaedic replacement – 2013 to 2014

Difference from 2013 data – All Orthopaedic replacements



2013 (n = 300)

2014 (n = 322)

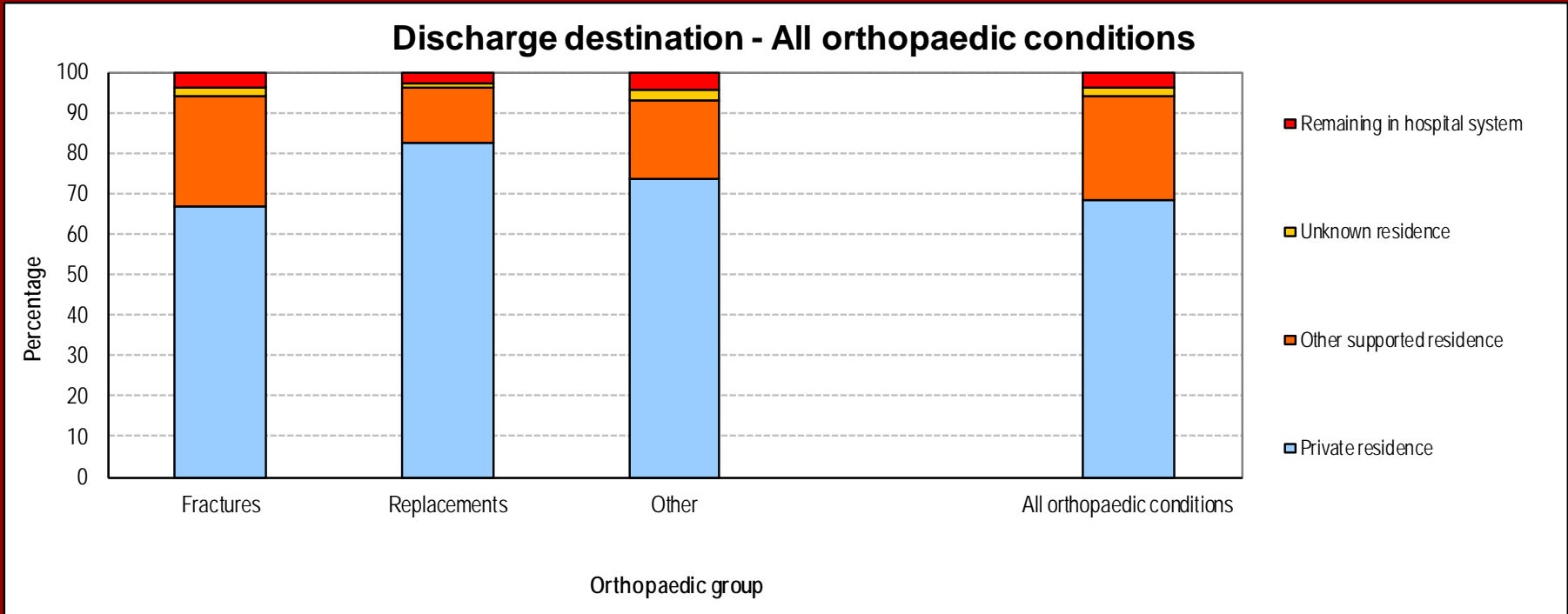
Lower than 2013 data

Higher than 2013 data

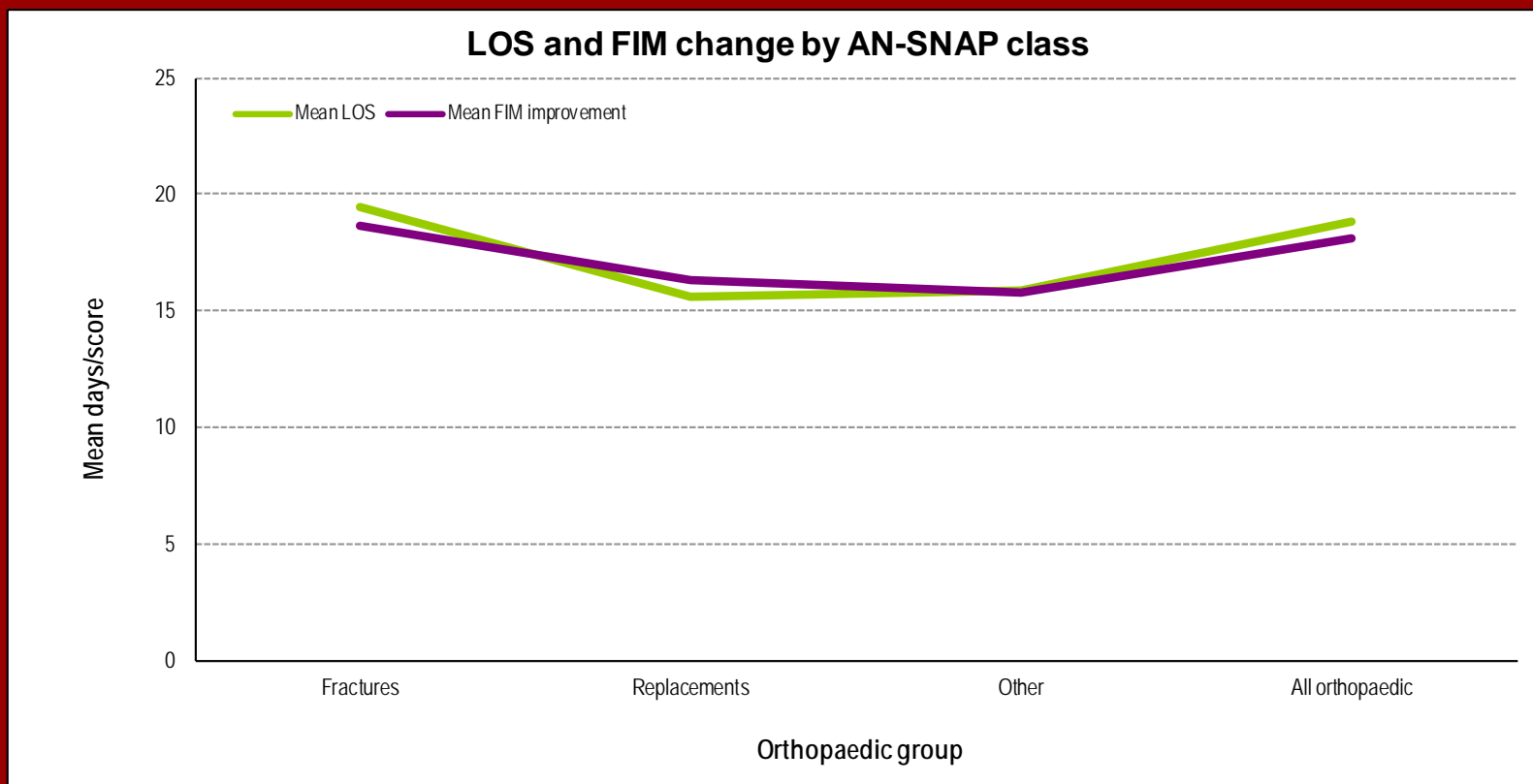
All orthopaedic episodes in 2014

	Fractures	Replacements	Other	All orthopaedic conditions
Number of episodes	3,479	322	462	4,263
Proportion of episodes	81.6%	7.6%	10.8%	100.0%
Benchmark groups (%)				
<i>Under 65</i>	95.9	93.7	92.8	95.4
<i>65 and over</i>	4.1	6.3	7.2	4.6
Gender (%)				
<i>Female</i>	74.7	61.8	69.9	73.2
<i>Male</i>	25.3	38.2	30.1	26.8
Age (Mean+95%CI)	82.6 (82.9–82.2)	79.3 (80.3–78.3)	80.6 (81.6–79.5)	82.1 (82.4–81.8)
Admission FIM (Mean+95%CI)	71.8 (72.5–71.0)	81.2 (83.3–79.0)	81.3 (83.1–79.4)	73.5 (74.2–72.8)
LOS (Mean+95%CI)	19.5 (19.9–19.0)	15.6 (16.9–14.3)	15.9 (16.9–14.8)	18.8 (19.2–18.4)
Discharge destination (%)				
<i>Discharged to community</i>	96.3	96.9	95.7	96.3
<i>Remaining in hospital system</i>	3.7	3.1	4.3	3.7
FIM improvement (Mean+95%CI)	18.6 (19.1–18.2)	16.3 (17.6–15.0)	15.8 (17.0–14.6)	18.1 (18.6–17.7)
FIM efficiency (FIM imp./LOS)	1.0	1.0	1.0	1.0

All Orthopaedic episodes discharge destination by AN-SNAP class

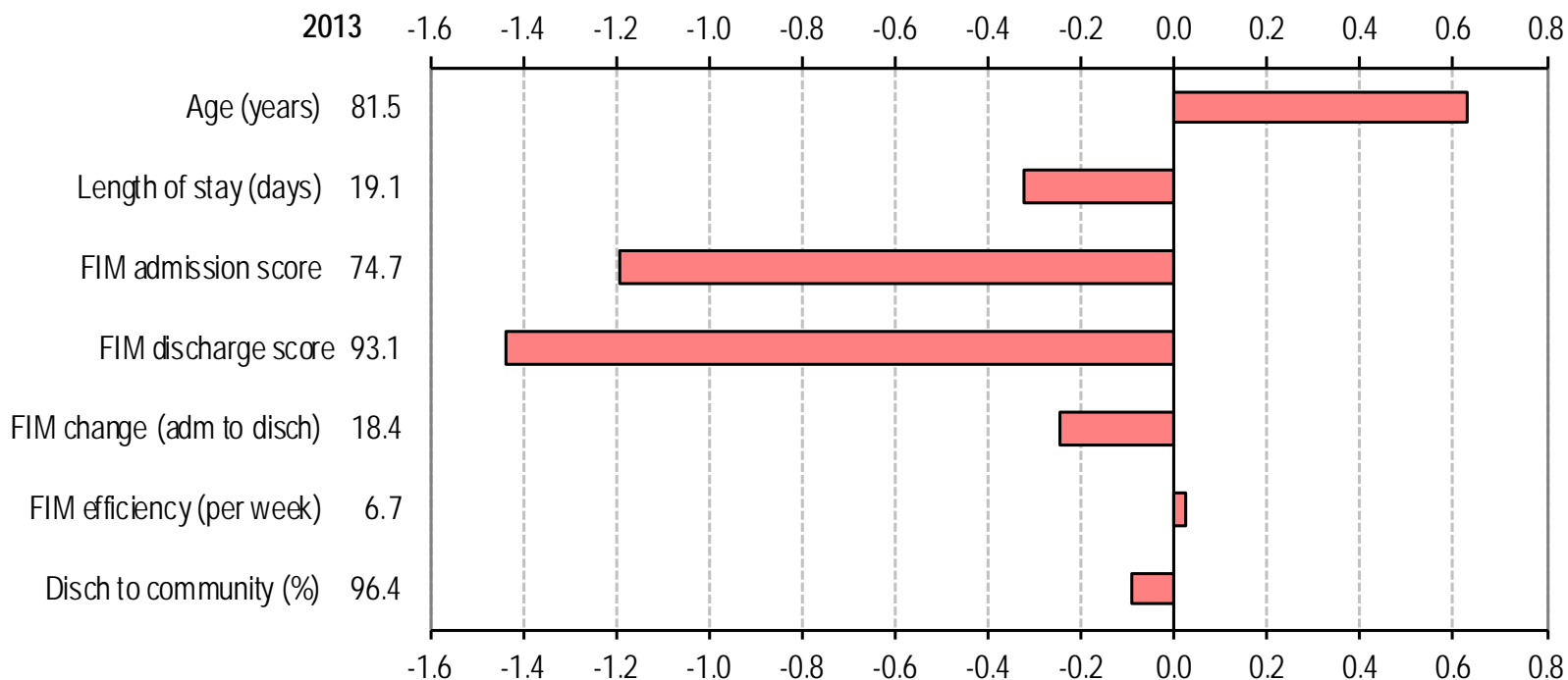


All orthopaedic conditions LOS and FIM change by AN-SNAP class



Change in outcome measures in orthopaedic conditions – 2013 to 2014

Difference from 2013 data – All orthopaedic conditions



2013 (n = 3981)

2014 (n = 4263)

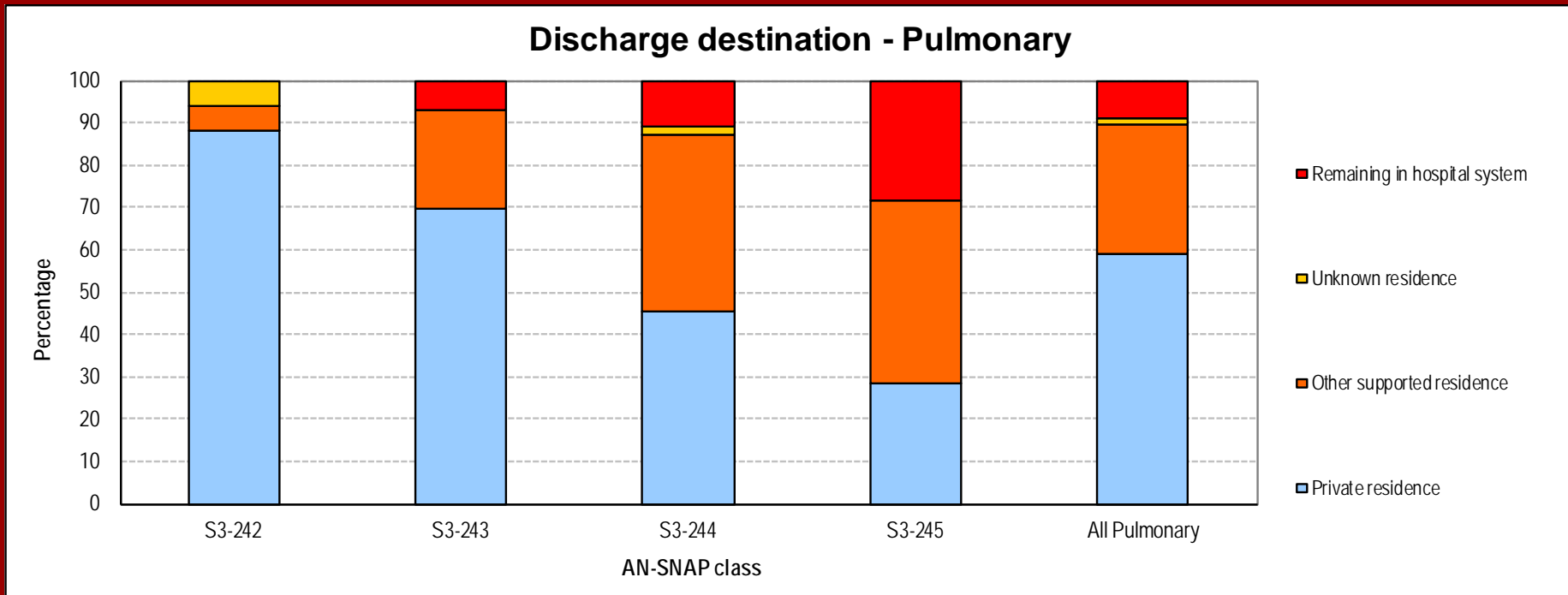
Lower than 2013 data

Higher than 2013 data

Pulmonary episodes in 2014

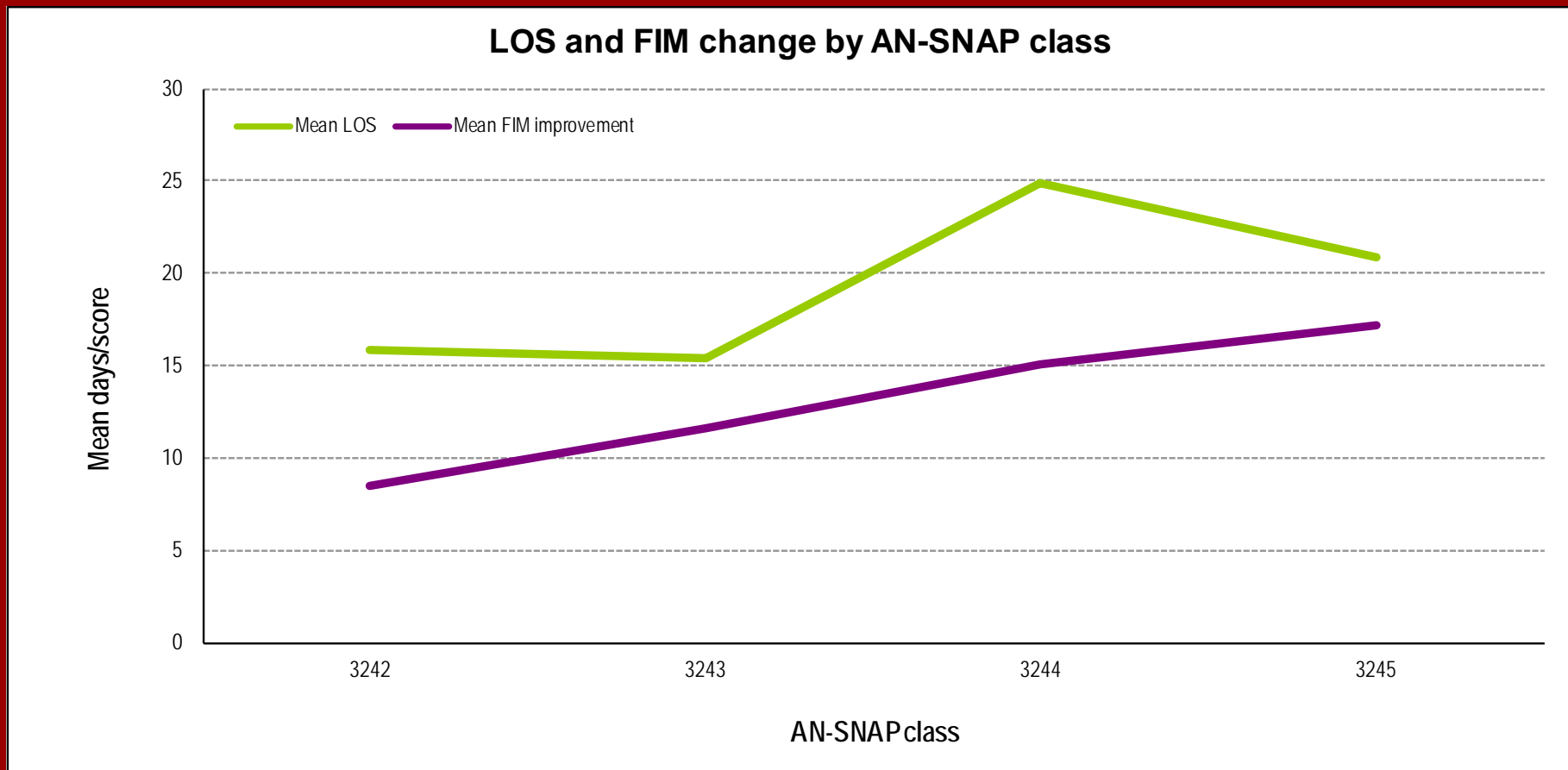
AN-SNAP class:	S3-242	S3-243	S3-244	S3-245	All Pulmonary
Number of episodes	17	43	55	7	122
Proportion of episodes	13.9%	35.2%	45.1%	5.7%	100.0%
Benchmark groups (%)					
<i>Under 65</i>	88.2	97.7	92.7	100.0	94.3
<i>65 and over</i>	11.8	2.3	7.3	0.0	5.7
Gender (%)					
<i>Female</i>	29.4	58.1	49.1	42.9	49.2
<i>Male</i>	70.6	41.9	50.9	57.1	50.8
Age (Mean+95%CI)	77.3 (82.9–71.7)	81.7 (84.0–79.5)	80.0 (84.1–75.8)	83.1 (90.1–76.2)	80.4 (82.6–78.3)
Admission FIM (Mean+95%CI)	105.4 (110.0–100.7)	87.6 (89.4–85.8)	64.9 (67.8–62.0)	35.2 (46.1–24.3)	77.6 (81.3–73.9)
LOS (Mean+95%CI)	15.8 (22.2–9.4)	15.4 (20.5–10.4)	24.8 (39.6–10.1)	20.8 (31.7–9.9)	20.0 (26.8–13.1)
Discharge destination (%)					
<i>Discharged to community</i>	100.0	93.0	89.1	71.4	91.0
<i>Remaining in hospital system</i>	0.0	7.0	10.9	28.6	9.0
FIM improvement (Mean+95%CI)	8.4 (11.2–5.7)	11.6 (14.4–8.9)	15.1 (19.8–10.4)	17.2 (37.3–2.9)	13.0 (15.4–10.6)
FIM efficiency (FIM imp./LOS)	0.5	0.8	0.6	0.8	0.7

Pulmonary discharge destination by AN-SNAP class

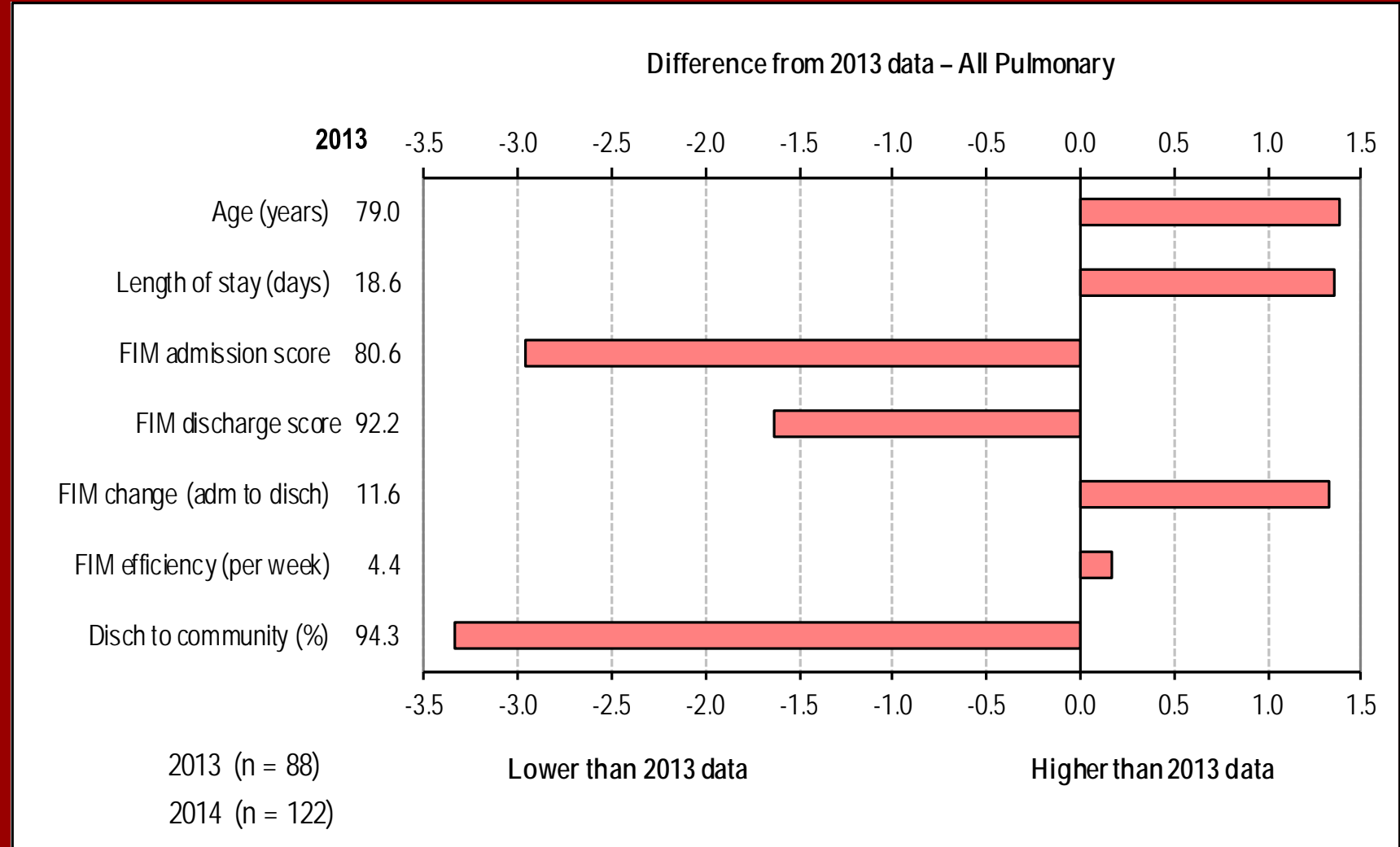


Pulmonary LOS and FIM change by AN-SNAP class

aroc



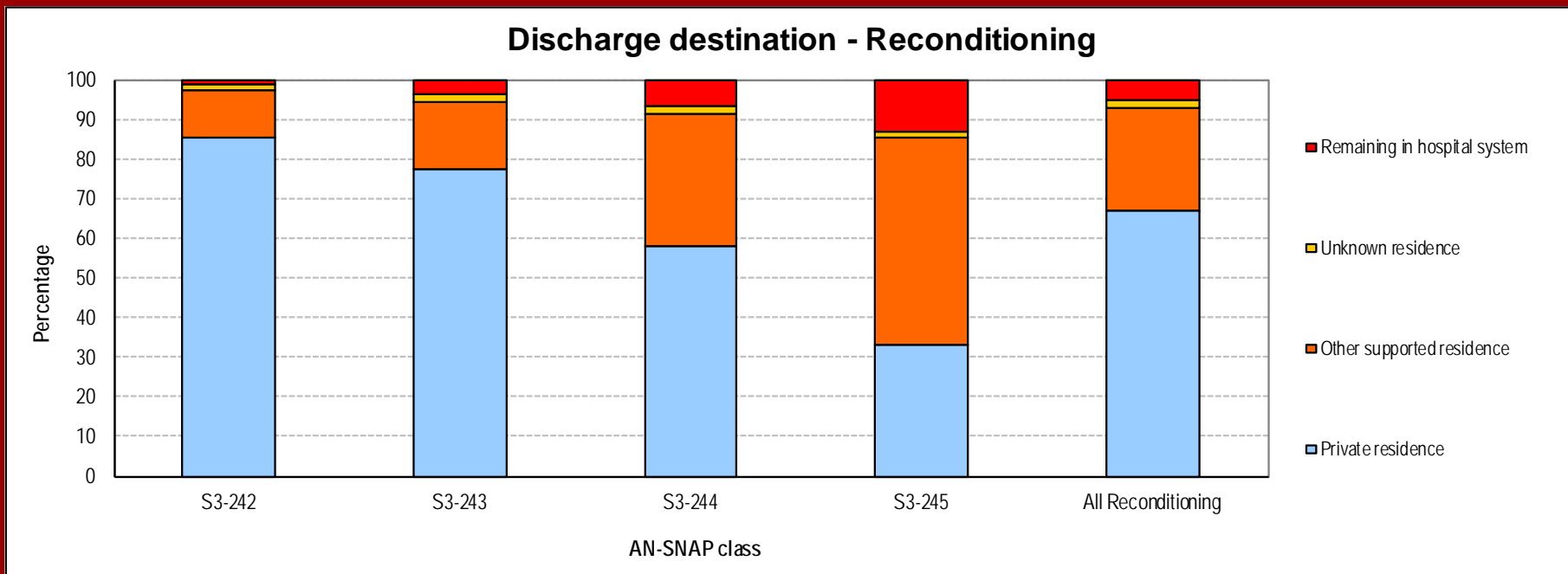
Change in outcome measures in pulmonary – 2013 to 2014



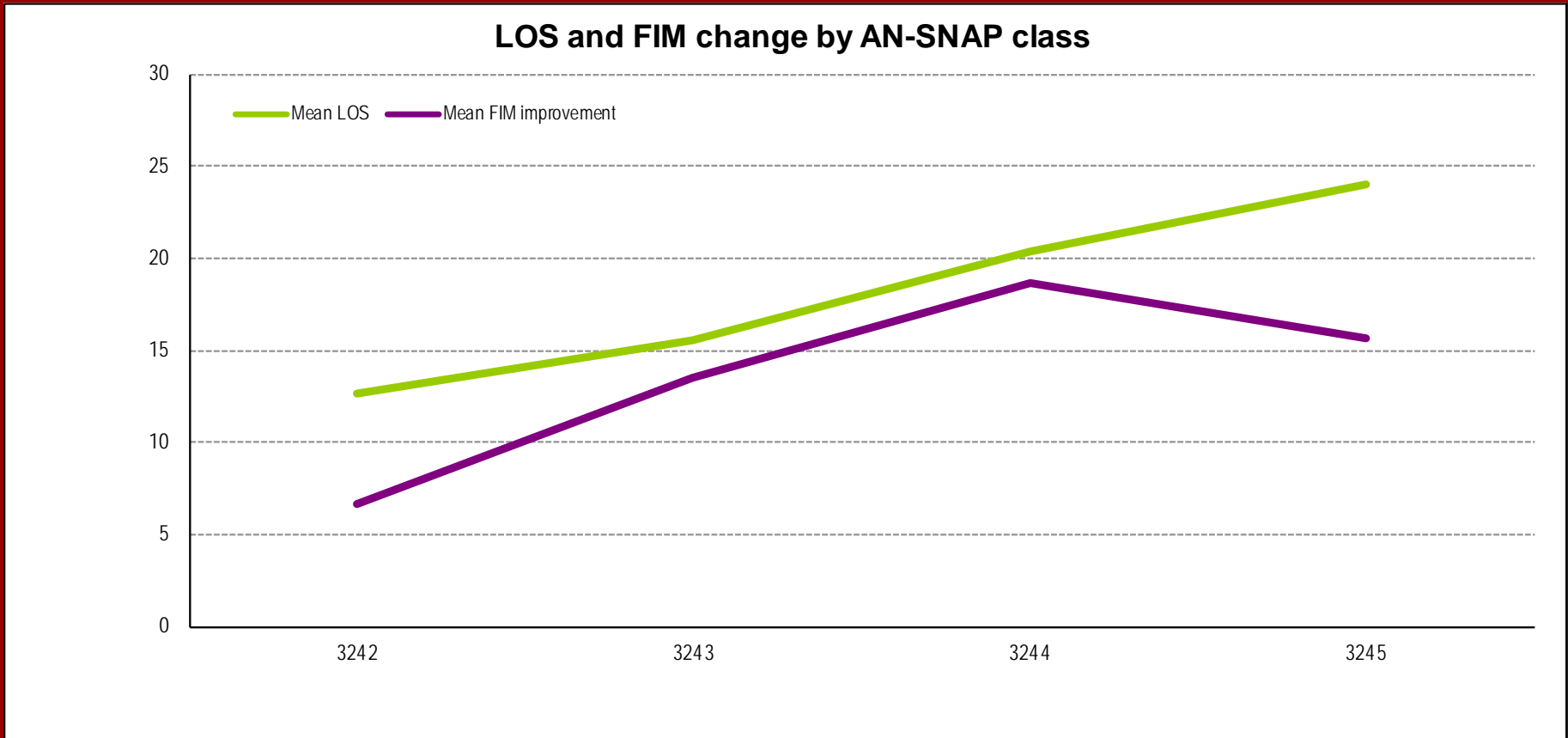
Reconditioning episodes in 2014

AN-SNAP class:	S3-242	S3-243	S3-244	S3-245	All Reconditioning
Number of episodes	639	855	1,190	274	2,958
Proportion of episodes	21.6%	28.9%	40.2%	9.3%	100.0%
Benchmark groups (%)					
<i>Under 65</i>	90.9	91.8	91.5	90.5	91.3
<i>65 and over</i>	9.1	8.2	8.5	9.5	8.7
Gender (%)					
<i>Female</i>	53.5	56.0	53.9	46.0	53.7
<i>Male</i>	46.5	44.0	46.1	54.0	46.3
Age (Mean+95%CI)	78.6 (79.4–77.8)	79.4 (80.2–78.7)	80.4 (81.0–79.7)	80.2 (81.6–78.8)	79.7 (80.1–79.3)
Admission FIM (Mean+95%CI)	104.2 (104.9–103.5)	86.7 (87.2–86.2)	63.6 (64.3–62.9)	36.7 (38.0–35.5)	77.1 (78.0–76.3)
LOS (Mean+95%CI)	12.7 (14.0–11.3)	15.5 (16.3–14.8)	20.4 (21.1–19.7)	24.0 (26.2–21.9)	17.6 (18.1–17.0)
Discharge destination (%)					
<i>Discharged to community</i>	98.6	96.1	93.3	86.9	94.7
<i>Remaining in hospital system</i>	1.4	3.9	6.7	13.1	5.3
FIM improvement (Mean+95%CI)	6.6 (7.2–6.0)	13.5 (14.2–12.8)	18.7 (19.5–17.8)	15.6 (18.0–13.2)	14.2 (14.7–13.7)
FIM efficiency (FIM imp./LOS)	0.5	0.9	0.9	0.6	0.8

Reconditioning discharge destination by AN-SNAP class



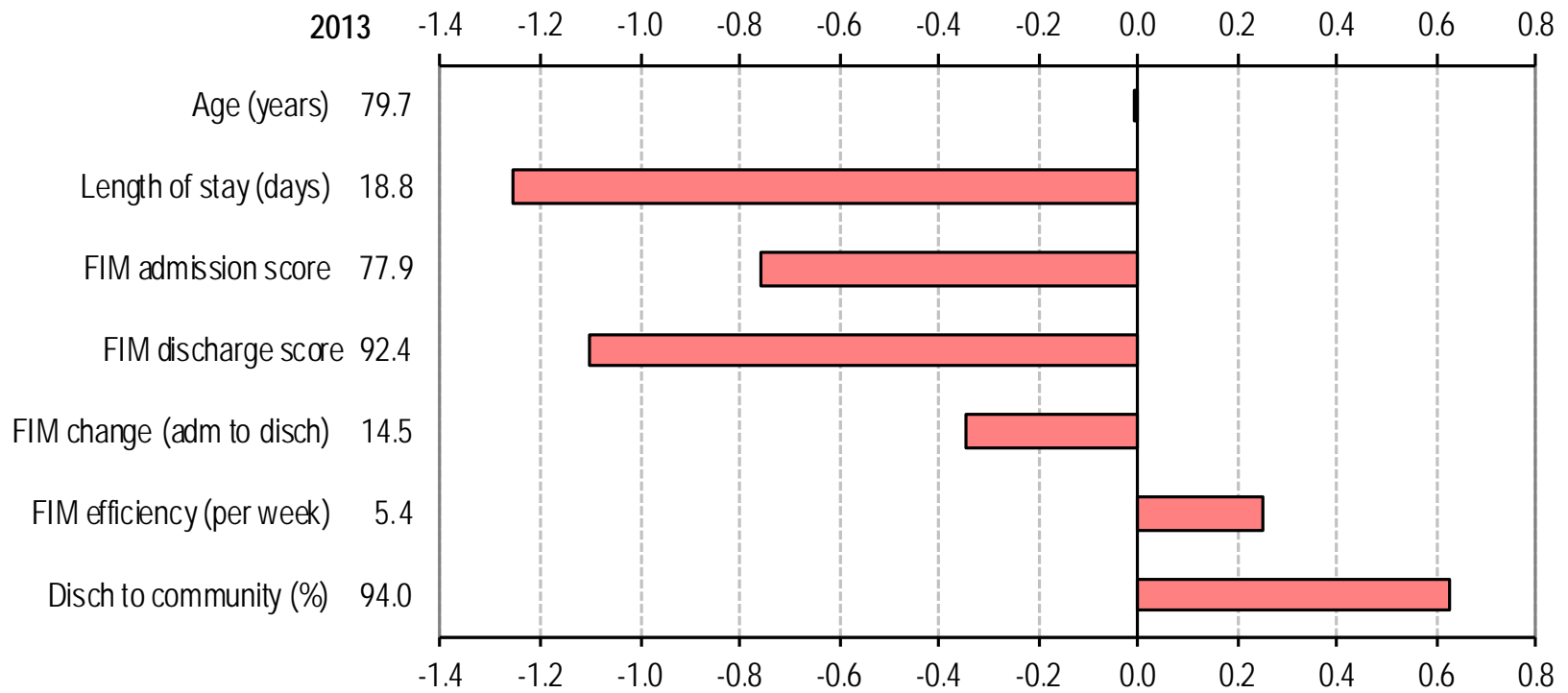
Reconditioning LOS and FIM change by AN-SNAP class



Change in outcome measures in reconditioning – 2013 to 2014



Difference from 2013 data – All Reconditioning



2013 (n = 2566)

2014 (n = 2958)

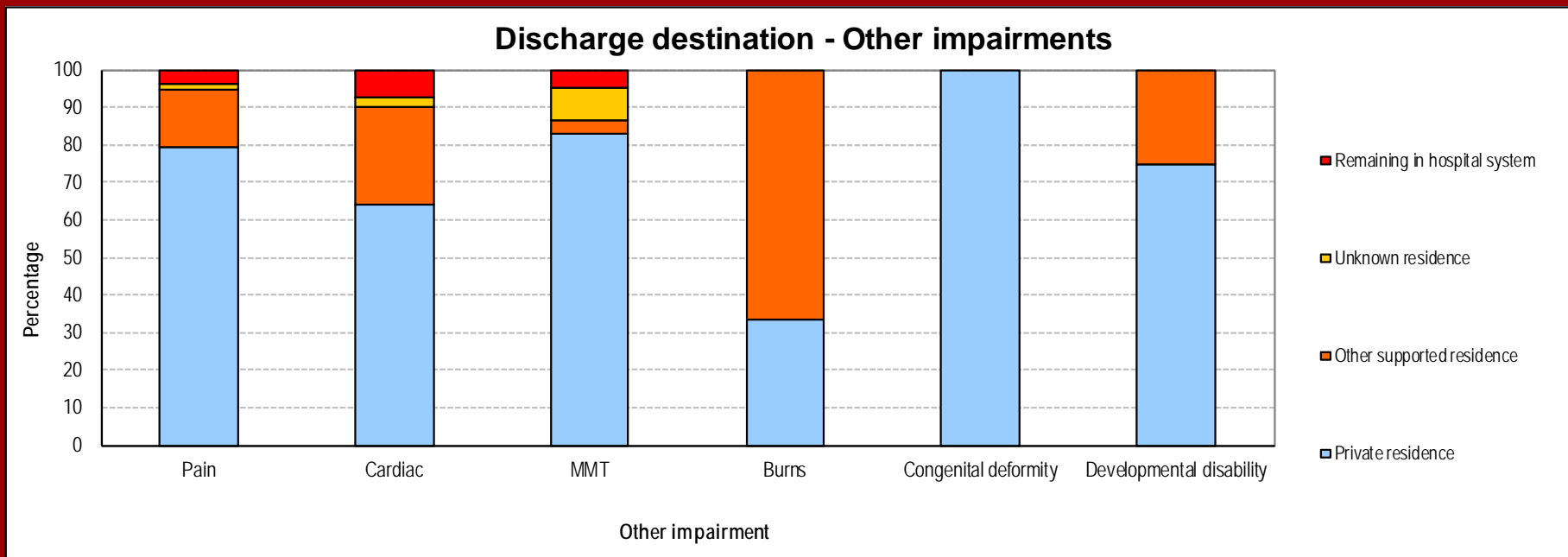
Lower than 2013 data

Higher than 2013 data

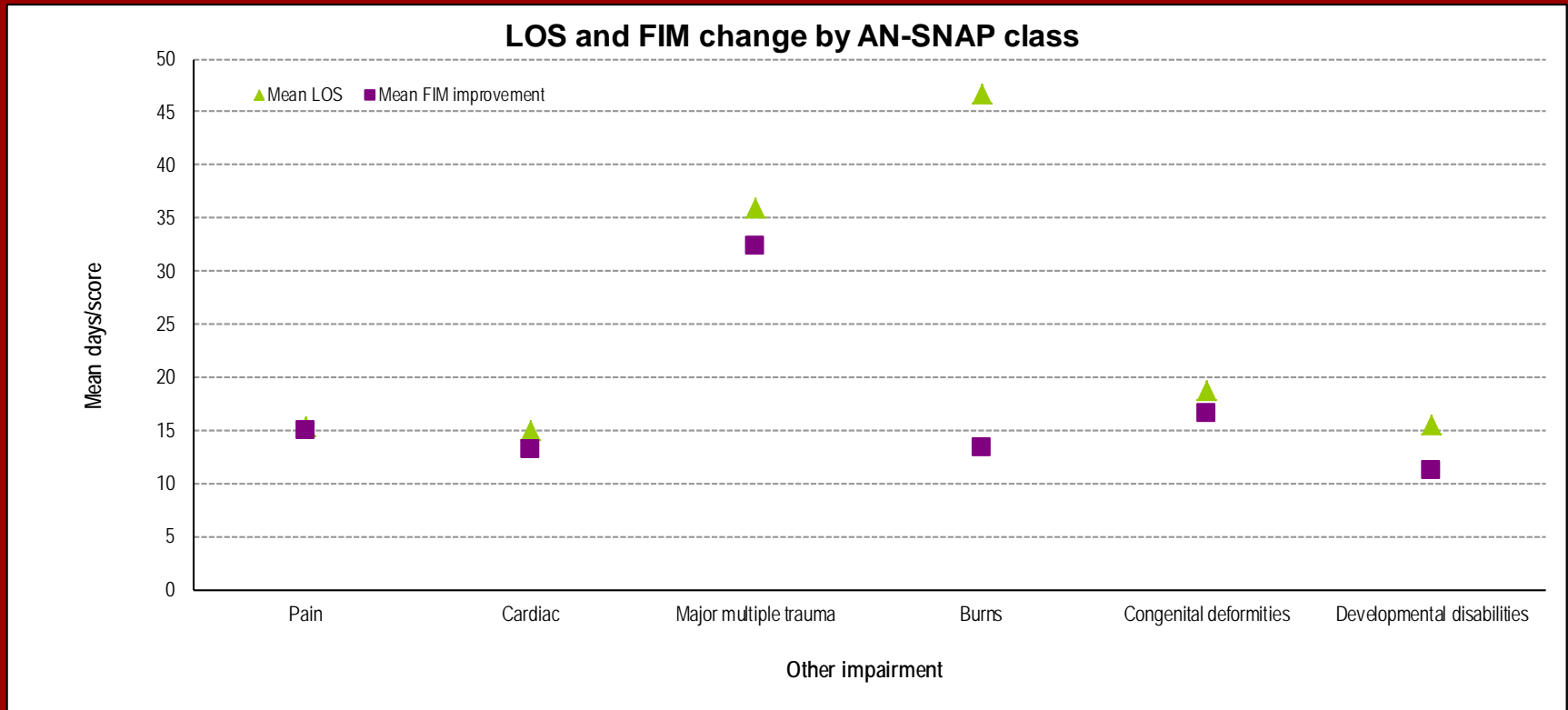
Other impairment episodes in 2014

	Pain	Cardiac	MMT	Burns	Congenital deformity	Developmental disability
Number of episodes	273	144	82	n<5	5	n<5
Proportion of total episodes in 2012	2.4%	1.3%	0.7%		0.0%	
Benchmark groups (%)						
<i>Under 65</i>	94.9	93.7	28.0	n.a.	0.0	n.a.
<i>65 and over</i>	5.1	6.3	72.0		100.0	
Gender (%)						
<i>Female</i>	71.4	46.5	28.0	n.a.	80.0	n.a.
<i>Male</i>	28.6	53.5	72.0		20.0	
Age (Mean+95%CI)	81.0 (82.3–79.7)	81.8 (83.3–80.3)	50.0 (55.2–44.7)	n.a.	32.8 (56.5–9.0)	n.a.
Admission FIM (Mean+95%CI)	85.4 (88.0–82.9)	82.3 (86.0–78.5)	74.4 (80.5–68.4)	n.a.	99.8 (119.6–80.0)	n.a.
LOS (Mean+95%CI)	15.3 (16.7–13.9)	14.9 (16.4–13.4)	35.9 (43.4–28.4)	n.a.	18.8 (31.8–5.9)	n.a.
Discharge destination (%)						
<i>Discharged to community</i>	96.0	92.4	95.1	n.a.	100.0	n.a.
<i>Remaining in hospital system</i>	4.0	7.6	4.9		0.0	
FIM improvement (Mean+95%CI)	15.1 (16.7–13.4)	13.1 (16.0–10.3)	32.3 (37.6–27.0)	n.a.	16.6 (26.9–6.3)	n.a.
FIM efficiency (FIM imp./LOS)	1.0	0.9	0.9	n.a.	0.9	n.a.

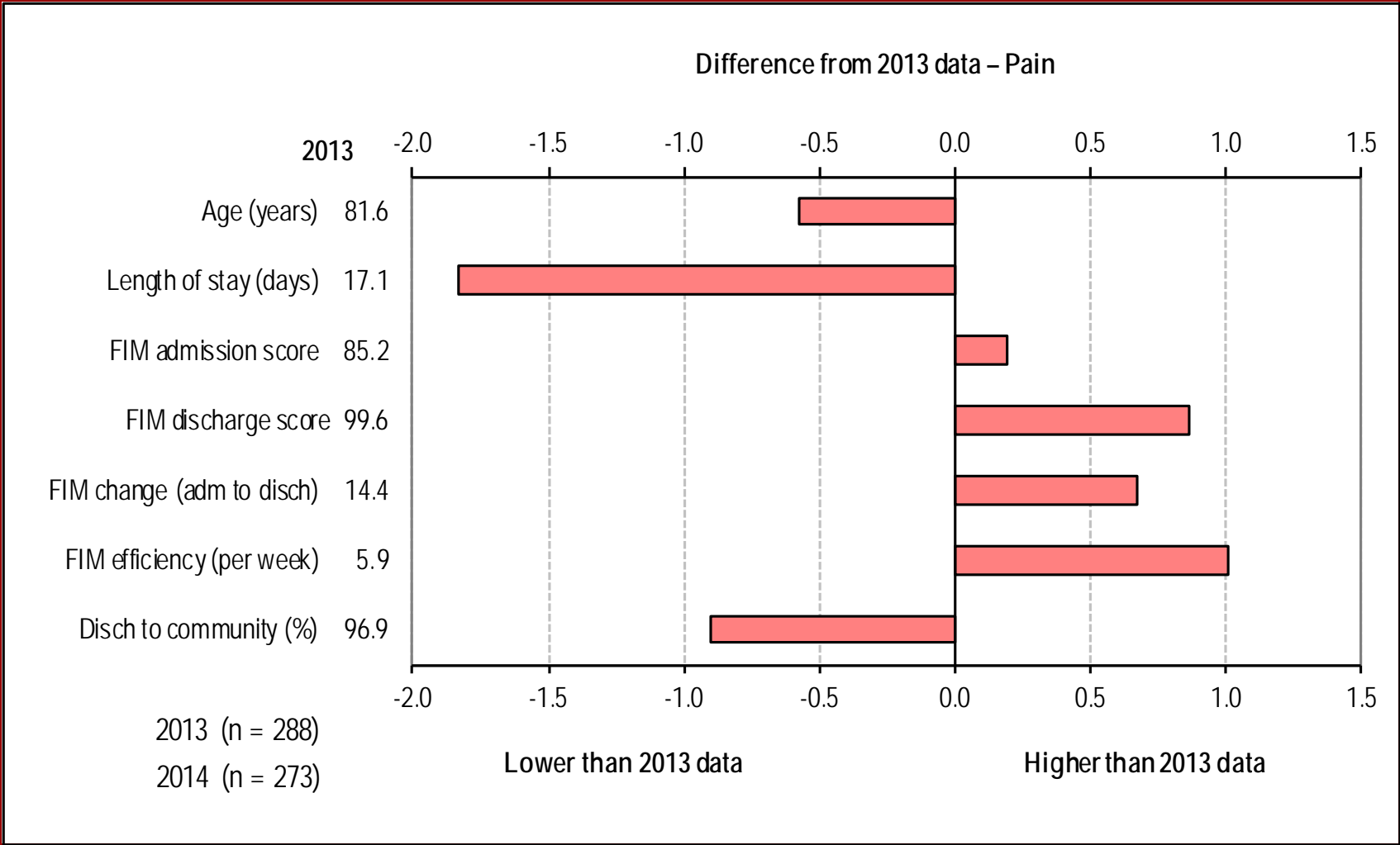
Other impairment discharge destination by AN-SNAP class



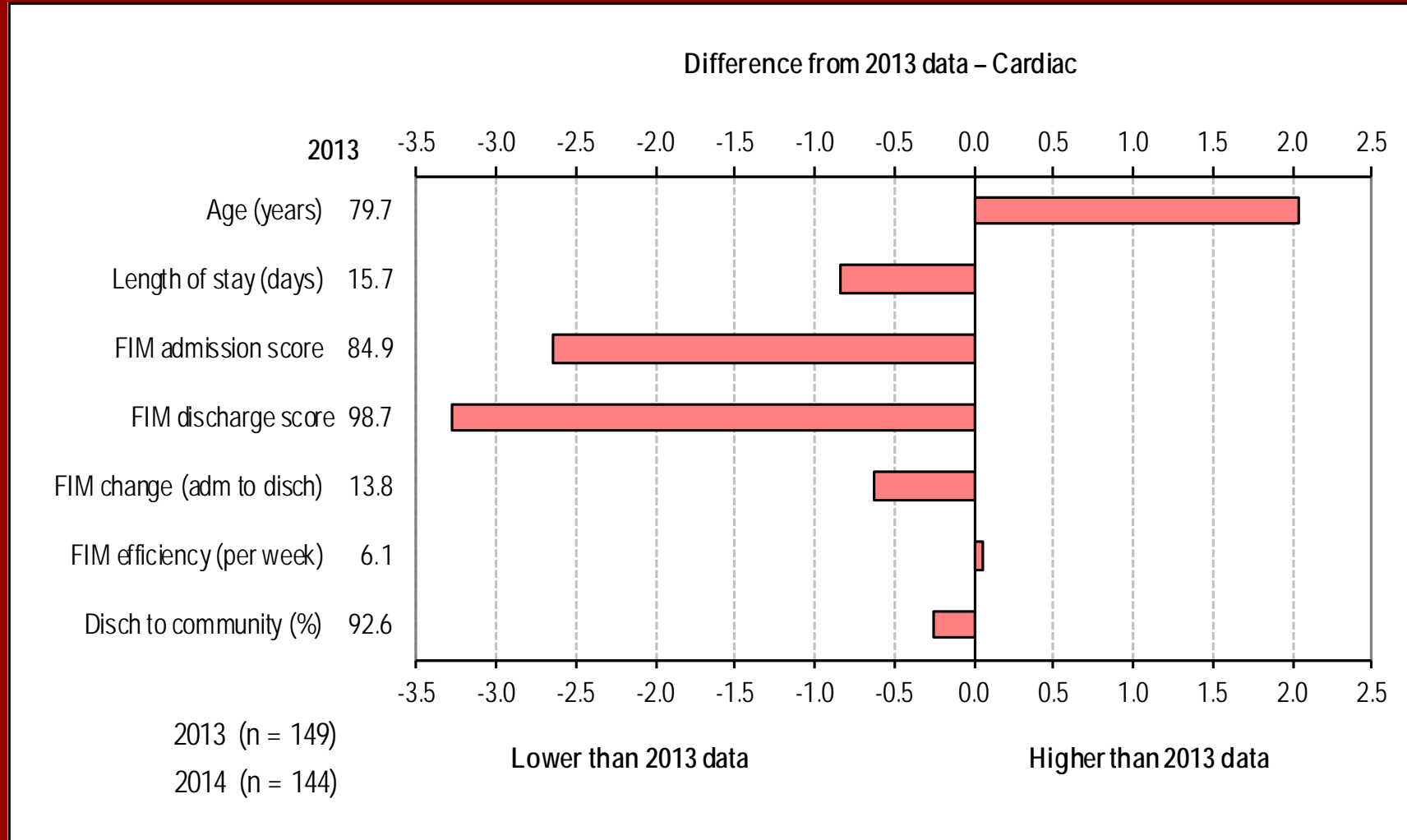
Other impairment LOS and FIM change by AN-SNAP class



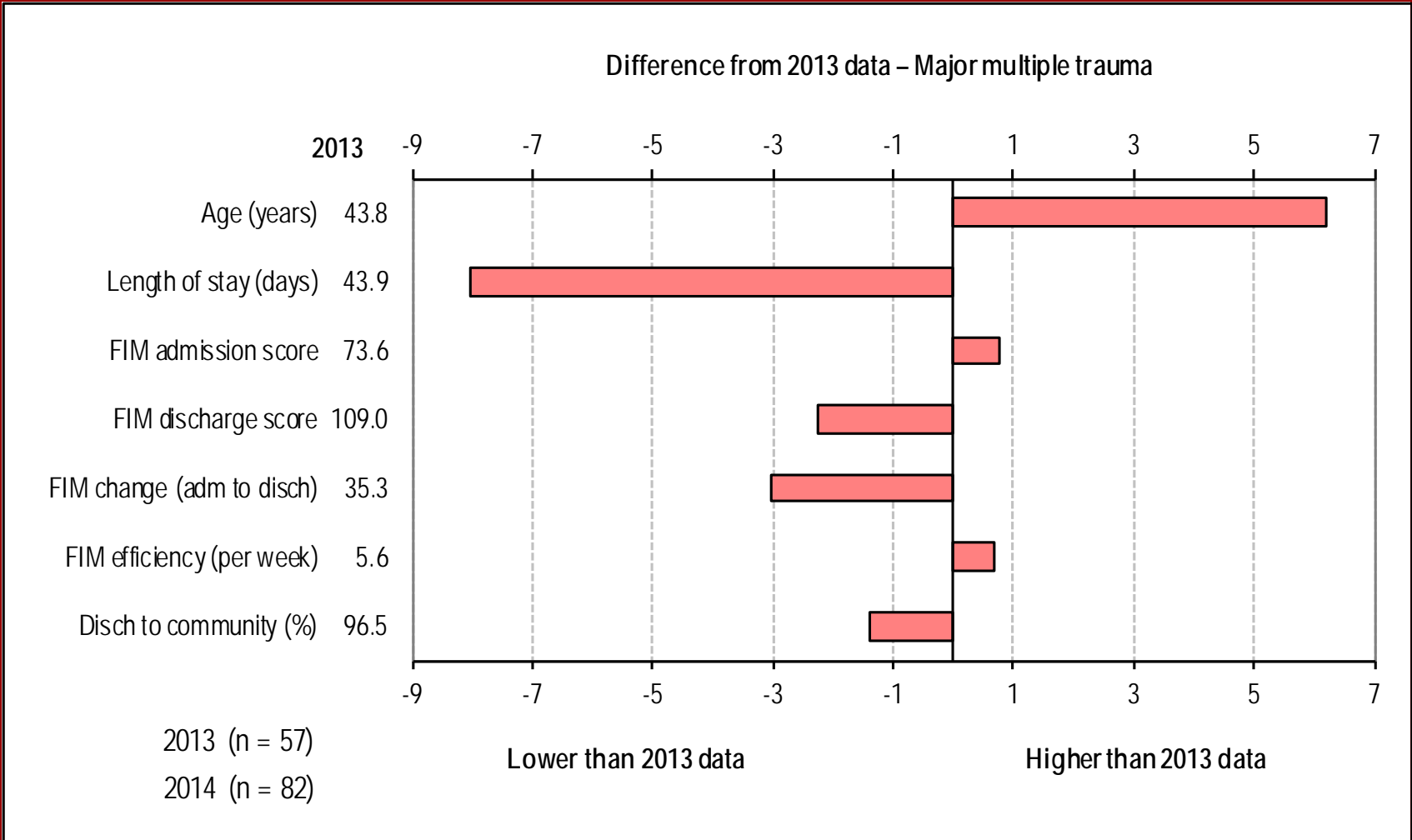
Change in outcome measures in pain – 2013 to 2014



Change in outcome measures in cardiac – 2013 to 2014



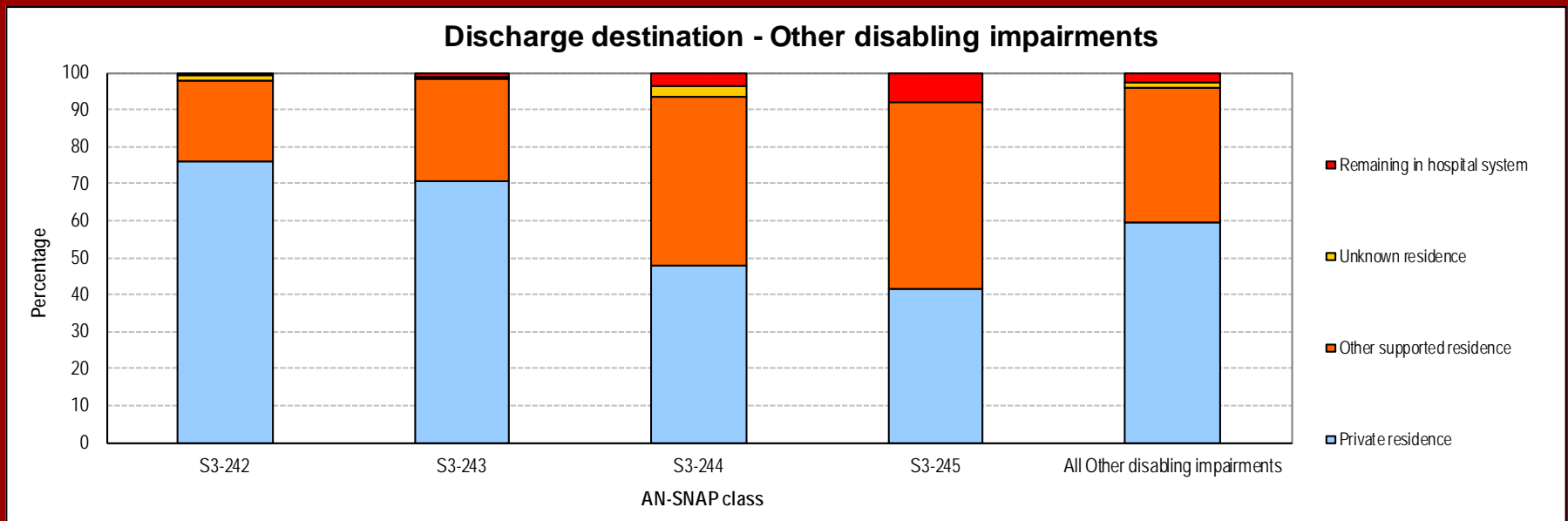
Change in outcome measures in MMT – 2013 to 2014



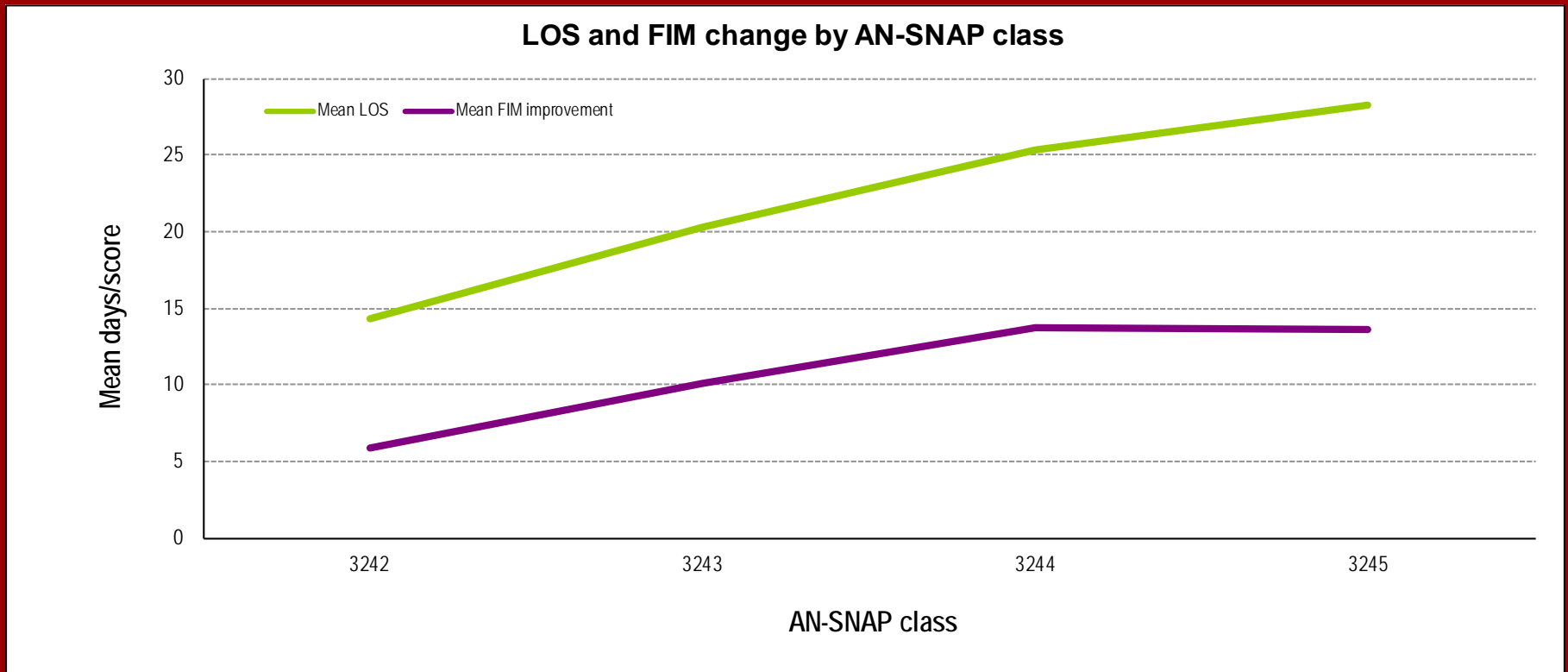
Other disabling impairment episodes in 2014

AN-SNAP class:	S3-242	S3-243	S3-244	S3-245	All Other disabling impairments
Number of episodes	151	178	266	77	672
Proportion of episodes	22.5%	26.5%	39.6%	11.5%	100.0%
Benchmark groups (%)					
<i>Under 65</i>	88.7	94.2	97.0	93.5	94.0
<i>65 and over</i>	11.3	5.8	3.0	6.5	6.0
Gender (%)					
<i>Female</i>	57.0	65.2	62.0	61.0	61.6
<i>Male</i>	43.0	34.8	38.0	39.0	38.4
Age (Mean+95%CI)	77.1 (79.4–74.8)	81.8 (83.4–80.2)	82.8 (83.9–81.7)	80.6 (82.9–78.3)	81.0 (81.8–80.2)
Admission FIM (Mean+95%CI)	97.1 (97.7–96.5)	80.6 (81.1–80.1)	62.9 (63.5–62.3)	38.8 (39.7–37.8)	74.9 (76.7–73.1)
LOS (Mean+95%CI)	14.3 (16.2–12.5)	20.3 (24.9–15.7)	25.4 (28.6–22.1)	28.3 (32.7–23.9)	21.7 (23.6–19.8)
Discharge destination (%)					
<i>Discharged to community</i>	99.3	98.9	96.2	92.2	97.2
<i>Remaining in hospital system</i>	0.7	1.1	3.8	7.8	2.8
FIM improvement (Mean+95%CI)	5.9 (6.9–4.9)	10.1 (11.6–8.6)	13.7 (15.5–12.0)	13.6 (17.9–9.3)	10.9 (11.9–9.9)
FIM efficiency (FIM imp./LOS)	0.4	0.5	0.5	0.5	0.5

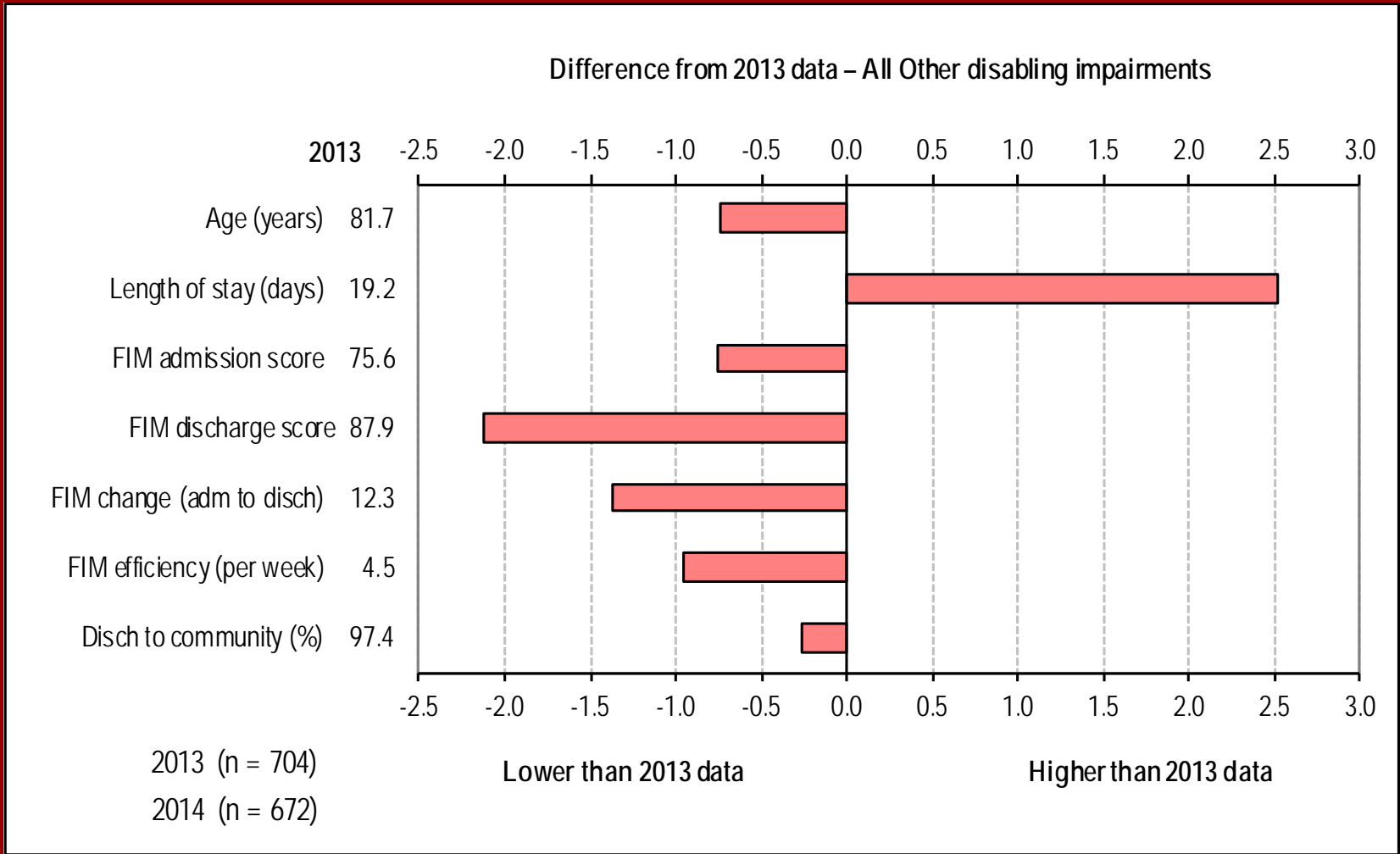
Other disabling impairment discharge destination by AN-SNAP class



Other disabling impairment LOS and FIM change by AN-SNAP class



Change in outcome measures in other disabling impairments – 2013 to 2014



AROC Contact Details

Australasian Rehabilitation Outcomes Centre

Australian Health Services Research Institute

iC Enterprise 1, Innovation Campus

University of Wollongong NSW 2522

Phone: +61-2-4221-4411

Email: aroc@uow.edu.au

Web: ahsri.uow.edu.au/aroc