



UNIVERSITY  
OF WOLLONGONG  
AUSTRALIA

University of Wollongong  
**Research Online**

---

Australian Health Services Research Institute

Faculty of Business

---

2008

# A snapshot of palliative care in Australia: January to June 2008

- PCOC

*University of Wollongong*

---

## Publication Details

PCOC, A snapshot of palliative care in Australia: January to June 2008 (Palliative Care Outcomes Collaboration, Centre for Health Service Development, Wollongong, Australia, 2008). [http://s3.amazonaws.com/zanran\\_storage/chsd.uow.edu.au/ContentPages/19111364.pdf](http://s3.amazonaws.com/zanran_storage/chsd.uow.edu.au/ContentPages/19111364.pdf)

Research Online is the open access institutional repository for the University of Wollongong. For further information contact the UOW Library:  
[research-pubs@uow.edu.au](mailto:research-pubs@uow.edu.au)

---

# A snapshot of palliative care in Australia: January to June 2008

## **Abstract**

In July 2007, Version 2 of the PCOC dataset was released. Report Issue Number 5 is the second to report against the Version 2 dataset. Fifty-four palliative care services submitted data for this report. The reporting period is January 2008 to June 2008

## **Keywords**

palliative, care, 2008, june, australia, snapshot, january

## **Publication Details**

PCOC, A snapshot of palliative care in Australia: January to June 2008 (Palliative Care Outcomes Collaboration, Centre for Health Service Development, Wollongong, Australia, 2008).

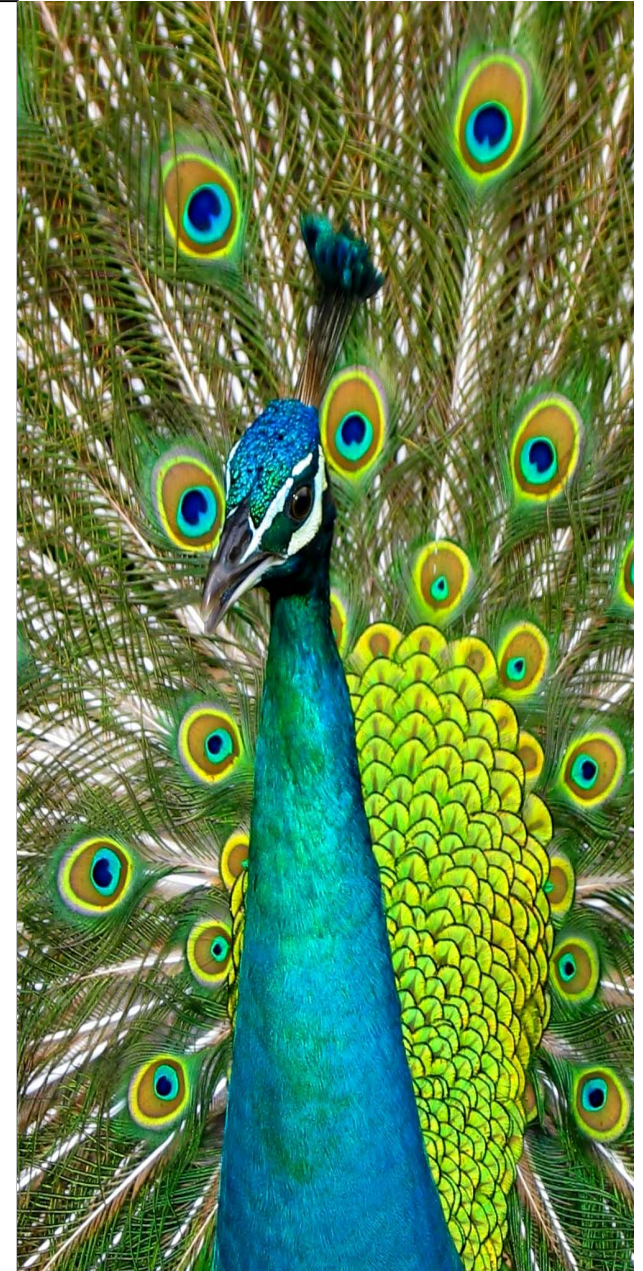
[http://s3.amazonaws.com/zanran\\_storage/chsd.uow.edu.au/ContentPages/19111364.pdf](http://s3.amazonaws.com/zanran_storage/chsd.uow.edu.au/ContentPages/19111364.pdf)



# A snapshot of palliative care in Australia

## January to June 2008

December 2008





---

## Table of Contents

Introduction .....	1
Data Summary .....	2
Profile of palliative care patients.....	3
Profile of palliative care episodes of care.....	6
Profile of palliative care phases.....	18
Services included in this report .....	30
Acknowledgments .....	33
PCOC contact details .....	34

## List of Tables

Table 1	Number and percentage of patients, episodes and phases - by episode type.....	2
Table 2	Patients with multiple episodes - overnight admitted patients.....	2
Table 3	Indigenous Status - all patients.....	3
Table 4	Sex - all patients.....	3
Table 5	Main language spoken at home - all patients.....	4
Table 6	Country of birth - all patients.....	5
Table 7	Number of episodes by age group - all patients.....	6
Table 8	Referral source - all patient episodes.....	8
Table 9	How episodes started and ended - not overnight admitted patients.....	10
Table 10	Accommodation at episode start and end - all discharged patients.....	11
Table 11	Level of support at episode start and end -all patients admitted from and discharged to private residence (home).....	12
Table 12	Primary diagnosis by episode type - summary.....	13
Table 13	Primary diagnosis by episode type.....	14
Table 14	Length of Stay (LOS) summary - overnight admitted patients.....	15
Table 15	Length of Stay (LOS) - overnight admitted patients.....	15
Table 16	Time from referral to episode start - overnight admitted patients.....	16
Table 17	Time from referral to first contact and first contact to episode start - patients not admitted overnight.....	16
Table 18	Place of death - patients not admitted overnight.....	17
Table 19	Number of phases by phase type.....	18
Table 20	Average phase length (in days) by phase and episode type.....	18
Table 21	Number of phases by phase type and model of care for patients who were not admitted overnight.....	19
Table 22	Profile of PC Problem Severity Scores (percentages) at beginning of phase by phase type - all patients.....	22
Table 23	Reason for phase end by phase type and episode type.....	23
Table 24	Average Symptom Assessment Scores (SAS) at beginning of phase by phase type.....	24
Table 25	Karnofsky score at phase start by episode type.....	25
Table 26	Data consistency - patient level items.....	27
Table 27	Data consistency - episode level items.....	28
Table 28	Data consistency - phase level items.....	29
Table 29	Services included in this report.....	30

## List of Figures

Figure 1	Age group activity pie chart - all patients.....	7
Figure 2	Total RUG-ADL at beginning of phase – overnight admitted patients.....	20
Figure 3	Total RUG-ADL at beginning of phase – not overnight admitted patients.....	21
Figure 4	Phase outcomes by phase - all patients.....	26

---

## Introduction

### *Funding*

Palliative Care Outcomes Collaboration (PCOC) was formed in mid-2005 and is funded by the Australian Government. It is a voluntary, quality initiative which aims to assist palliative care services to measure the standard and quality of care which is a stated goal of the National Palliative Care Strategy. In part, this will be achieved by collecting and analysing data and reporting findings to services.

### *Dataset*

The development of the PCOC dataset has evolved after broad consultation with services and representatives of peak organisations and approval by the Scientific and Clinical Advisory Committee (SCAC). The PCOC database as at 30 June 2008 contained data on 29,006 episodes of care and 56,181 phases of care.

### *PCOC reports*

PCOC provides analysis of each services data and also compares this to the national data. The clinical assessment tools - Phase of Care, PC Problem Severity Score, Symptom Assessment Scale, Australian-modified Karnofsky and RUG-ADL provide measures of quality and outcomes.

### *PCOC Report Issue 5*

In July 2007, Version 2 of the PCOC dataset was released. Report Issue Number 5 is the second to report against the Version 2 dataset. Fifty-four palliative care services submitted data for this report. The reporting period is January 2008 to June 2008.

### *Points to note*

Some services have not yet made the transition from collecting Version 1 to Version 2 data. Hence, services submitting Version 1 data are excluded from any tables reporting on the Version 2 data items. In addition, interpret all figures carefully as results may appear distorted due to low frequencies being represented as percentages.

Some tables throughout the report may be incomplete. This is because some items may not be applicable to a particular service or it may be due to data quality issues. Please use the following key when interpreting the tables:

- The item is not applicable
- \* The item was unable to be calculated due to missing or invalid data.

## Data Summary

This report presents data from a total of 54 services. During the reporting period data were provided for a total of 6718 patients, with 8189 episodes and 18439 phases.

**Table 1** *Number and percentage of patients, episodes and phases - by episode type*

Episode type	Overnight admitted	Not overnight admitted	Total
	All Services	All Services	All Services
Number of patients*	4893	2100	6718
Number of episodes	5707	2482	8189
Number of phases	11254	7185	18439
Percentage of patients**	72.8	31.3	100
Percentage of episodes	69.7	30.3	100
Percentage of phases	61.0	39.0	100

Notes:

\* Patients who have been in both an overnight admitted and not overnight admitted setting are only counted once in the Total column and hence numbers may not add to the total.

\*\* Patients who have been in both an overnight admitted and not overnight admitted setting are only counted once in the Total column and hence percentages may not add to 100.

**Table 2** *Patients with multiple episodes - overnight admitted patients*

Patients with:	All Services				
	Number	%	Average age at first admission	Malignant %	Non-malignant %
1 episode	4262	87.1	71	61.9	10.3
2 episodes	512	10.5	68	69.9	7.0
3 episodes	86	1.8	66	70.9	4.7
4 episodes	23	0.5	70	78.3	0.0
5 or more episodes	10	0.2	69	70.0	20.0

Note: Records where diagnosis was not provided are excluded from the table and hence the percentage of malignant and non-malignant may not add to 100. Diagnosis has been collected for approximately 80% of all episodes.



## Profile of palliative care patients

**Table 3** *Indigenous Status - all patients*

Indigenous Status	All patients
Aboriginal but not Torres Strait Islander origin	81
Torres Strait Islander but not Aboriginal origin	10
Both Aboriginal and Torres Strait Islander origin	6
Neither Aboriginal nor Torres Strait Islander origin	6307
Not stated/Inadequately described	314
<b>Total</b>	<b>6718</b>

**Table 4** *Sex - all patients*

Sex	All patients	%
Male	3680	54.8
Female	3027	45.1
Not stated/inadequately described	11	0.2
<b>Total</b>	<b>6718</b>	<b>100.0</b>

**Table 5** *Main language spoken at home - all patients*

Main language spoken at home	All patients	%
English	4426	65.9
Italian	76	1.1
Croatian	52	0.8
Greek	48	0.7
Serbian	25	0.4
Cantonese	24	0.4
Polish	20	0.3
Tagalog(Filipino)	16	0.2
Russian	12	0.2
Spanish	11	0.2
German	10	0.1
Maltese	9	0.1
Arabic (including Lebanese)	9	0.1
Vietnamese	8	0.1
Mandarin	8	0.1
All other languages	94	1.4
Not stated/inadequately described	1870	27.8
<b>Total</b>	<b>6718</b>	<b>100.0</b>

Note: The most common 15 languages from the benchmark dataset are reported separately, all other languages have been grouped together to form the category *All other languages*.

**Table 6 Country of birth - all patients**

Country of birth	All patients	%
Australia	4004	59.6
England	542	8.1
Italy	212	3.2
Scotland	115	1.7
New Zealand	98	1.5
Greece	87	1.3
Germany	77	1.1
China	65	1.0
Netherlands	64	1.0
Poland	61	0.9
Croatia	53	0.8
Malta	47	0.7
Ireland	44	0.7
Yugoslavia	37	0.6
South Africa	37	0.6
All other countries	665	9.9
Not stated/inadequately described	510	7.6
<b>Total</b>	<b>6718</b>	<b>100.0</b>

Note: The most common 15 countries from the benchmark dataset are reported separately, all other countries have been grouped together to form the category *All other countries*.

## Profile of palliative care episodes of care

The 6718 patients seen in the six month period had a total of 8,189 episodes of palliative care. These episodes included inpatient, community and consultative episodes. So, for example, a patient who received both inpatient and community (home-based) palliative care during the period is counted as two episodes in the PCOC data system.

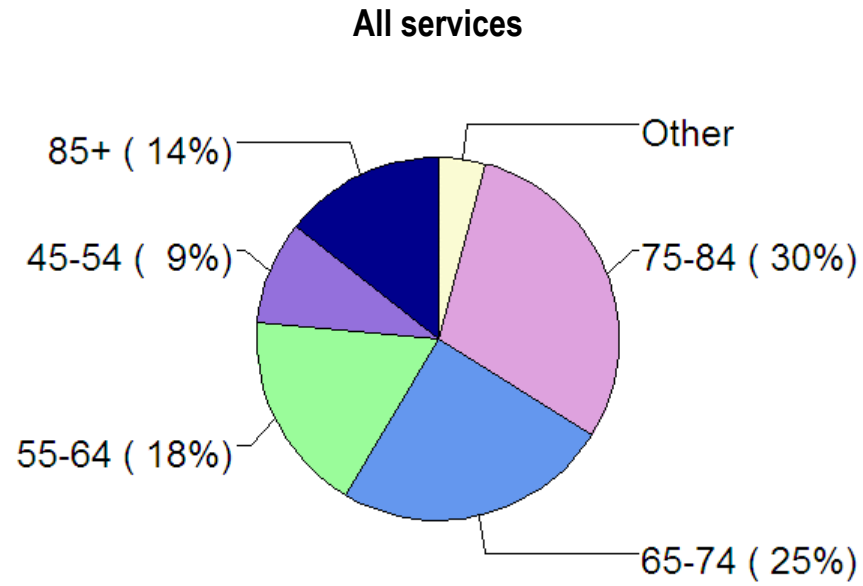
Episode level activity is presented below by 10 year age group. The average age for all patients during this period was 70 years old.

**Table 7** *Number of episodes by age group - all episodes*

Age group	All episodes	%
< 15	23	0.3
15-24	35	0.4
25-34	64	0.8
35-44	227	2.8
45-54	759	9.3
55-64	1467	17.9
65-74	2021	24.7
75-84	2424	29.6
85+	1168	14.3
Not stated/inadequately described	1	0.0
<b>Total</b>	<b>8189</b>	<b>100.0</b>

Episode level activity by age group is also presented graphically below

**Figure 1** Age group activity pie chart - all episodes



Note: The pie charts include all patients, both overnight admitted and not overnight admitted.

**Table 8 Referral source - all patient episodes**

<b>Referral source</b>	<b>All episodes</b>	<b>%</b>
Public hospital - other than inpatient palliative care unit	2790	34.1
General Medical Practitioner rooms	1178	14.4
Community-based palliative care agency	841	10.3
Private hospital - other than inpatient palliative care unit	608	7.4
Specialist Medical Practitioner rooms	270	3.3
Community-based service	202	2.5
Public palliative care inpatient unit/hospice	200	2.4
Self, carer(s), family or friends	119	1.5
Residential aged care facility	63	0.8
Private palliative care inpatient unit/hospice	52	0.6
Other	119	1.5
Not stated/inadequately described	1747	21.3
<b>Total</b>	<b>8189</b>	<b>100.0</b>

**Table 9** *How episodes started and ended - overnight admitted patients*

Mode of episode start	Mode of episode end					Total
	Discharged to usual accommodation	Discharged to interim accommodation	Discharged to another hospital	Death	All other reasons**	
Admitted from usual accommodation	1045	77	104	1435	101	2762
Admitted from other than usual accommodation	9	29	4	67	8	117
Admitted (transferred) from another hospital	208	30	66	1076	36	1416
Admitted (transferred) from acute care in other ward	55	26	13	229	8	331
All other reasons*	50	6	13	160	683	912
<b>Total</b>	<b>1367</b>	<b>168</b>	<b>200</b>	<b>2967</b>	<b>836</b>	<b>5538</b>
<b>As a percentage of each start mode</b>						
Admitted from usual accommodation	37.8	2.8	3.8	52.0	3.7	100.0
Admitted from other than usual accommodation	7.7	24.8	3.4	57.3	6.8	100.0
Admitted (transferred) from another hospital	14.7	2.1	4.7	76.0	2.5	100.0
Admitted (transferred) from acute care in other ward	16.6	7.9	3.9	69.2	2.4	100.0
All other reasons*	5.5	0.7	1.4	17.5	74.9	100.0
<b>Total</b>	<b>24.7</b>	<b>3.0</b>	<b>3.6</b>	<b>53.6</b>	<b>15.1</b>	<b>100.0</b>

Note: All episodes where episode start mode or episode end mode was Not stated/inadequately described are excluded from the table. Episodes that remain open at the end of the reporting period are also excluded.

\* Includes: Change from acute care to palliative care while remaining on same ward; Change of sub-acute/non-acute care type; Statistical admission from leave.

\*\* Includes: Change from palliative care to acute care - different ward; Change from palliative care to acute care - same ward; Discharged at own risk.

**Table 9** *How episodes started and ended - not overnight admitted patients*

Mode of episode start	Mode of episode end					Total
	Discharged/ case closure	Admitted for inpatient palliative care	Admitted for inpatient acute care	Transfer for primary care	Death	
<b>All services</b>						
New referral	212	341	512	16	680	1761
Transfer from being an o/n PC patient	73	113	156	14	158	514
<b>Total</b>	<b>285</b>	<b>454</b>	<b>668</b>	<b>30</b>	<b>838</b>	<b>2275</b>
<b>As a percentage of each start mode</b>						
New referral	12.0	19.4	29.1	0.9	38.6	100.0
Transfer from being an o/n PC patient	14.2	22.0	30.4	2.7	30.7	100.0
<b>Total</b>	<b>12.5</b>	<b>20.0</b>	<b>29.4</b>	<b>1.3</b>	<b>36.8</b>	<b>100.0</b>

Note: All episodes where episode start mode or episode end mode was Not stated/inadequately described are excluded from the table. Episodes that remain open at the end of the reporting period are also excluded.



**Table 10 Accommodation at episode start and end - all discharged patients**

Accommodation at episode start	Accommodation at episode end				Total
	Private residence	Low level care	High level care	All other*	
Private residence	988	17	55	76	1136
Residential aged care (low level care)	0	12	4	6	22
Residential aged care (high level care)	1	1	28	1	31
All other	7	1	0	8	16
<b>Total</b>	<b>996</b>	<b>31</b>	<b>87</b>	<b>91</b>	<b>1205</b>
<b>As a percentage of each start accommodation</b>					
Private residence	87.0	1.5	4.8	6.7	100.0
Residential aged care (low level care)	0.0	54.5	18.2	27.3	100.0
Residential aged care (high level care)	3.2	3.2	90.3	3.2	100.0
All other	43.8	6.3	0.0	50.0	100.0
<b>Total</b>	<b>82.7</b>	<b>2.6</b>	<b>7.2</b>	<b>7.6</b>	<b>100.0</b>

Note: All episodes where accommodation at episode start or end was Not stated/inadequately described are excluded from the table. Episodes that ended in death and episodes that remain open at the end of the reporting period are also excluded. The all other category includes: Community group home; Boarding house; Transitional living unit.

**Table 11 Level of support at episode start and end -all patients admitted from and discharged to private residence (home)**

Level of support at episode start	Level of support at episode end			Total
	Without support (lives alone or with others)	With support (lives alone or with others)	Other arrangements	
Without support (lives alone or with others)	24	71	0	95
With support (lives alone or with others)	12	402	0	414
Other arrangements	0	0	0	0
<b>Total</b>	<b>36</b>	<b>473</b>	<b>0</b>	<b>509</b>
<b>As a percentage of each start support</b>				
Without support (lives alone or with others)	25.3	74.7	0.0	100.0
With support (lives alone or with others)	2.9	97.1	0.0	100.0
Other arrangements	-	-	-	-
<b>Total</b>	<b>7.1</b>	<b>92.9</b>	<b>0.0</b>	<b>100.0</b>

Note: All episodes where level of support at episode start or end was Not stated/inadequately described are excluded from the table. Episodes that ended in death and episodes that remain open at the end of the reporting period are also excluded.

**Table 12 Primary diagnosis by episode type - summary**

Primary diagnosis	Overnight admitted		Not overnight admitted	
	All episodes	%	All episodes	%
Malignant	3658	64.1	2054	82.8
Non-malignant	522	9.1	297	12.0
Not stated/inadequately described	1527	26.8	131	5.3
<b>Total</b>	<b>5707</b>	<b>100.0</b>	<b>2482</b>	<b>100.0</b>

**Table 13 Primary diagnosis by episode type**

Primary diagnosis	Diagnostic category	Overnight admitted		Not overnight admitted		All episodes	
		All episodes	%	All episodes	%	All episodes	%
Malignant	Lung	770	22.8	164	18	934	21.8
	Colorectal	413	12.2	100	11	513	12.0
	Breast	279	8.3	81	8.9	360	8.4
	Prostate	256	7.6	63	6.9	319	7.4
	Other GIT	248	7.3	63	6.9	311	7.2
	Other Malignancy	225	6.7	57	6.3	282	6.6
	Head and neck	213	6.3	61	6.7	274	6.4
	Gynaecological	173	5.1	74	8.1	247	5.8
	Haematological	169	5	52	5.7	221	5.2
	Pancreas	145	4.3	57	6.3	202	4.7
	Other Urological	166	4.9	31	3.4	197	4.6
	Skin	135	4	32	3.5	167	3.9
	Bone and soft tissue	112	3.3	51	5.6	163	3.8
	CNS	74	2.2	26	2.9	100	2.3
	<i>All malignant</i>		3378	100.0	912	100.0	4290
Non-malignant	Other non-malignancy	145	27.8	68	41	213	31.0
	Cardiovascular	121	23.2	26	15.7	147	21.4
	Neurological disease	107	20.5	31	18.7	138	20.1
	Respiratory failure	70	13.4	20	12	90	13.1
	Kidney failure	47	9	17	10.2	64	9.3
	HIV/AIDS	32	6.1	4	2.4	36	5.2
	<i>All non-malignant</i>		522	100.0	166	100.0	688

Note: All episodes where diagnosis was Not stated/inadequately described or where the breakdown of malignant and non-malignant was not provided are excluded from the table.

**Table 14 Length of Stay (LOS) summary - overnight admitted patients**

Length of stay	All episodes
Average length of episode	12.8
Median length of episode	8
Average number of phases per episode	2.0

Note: Bereavement phase records are excluded and episodes that remain open at the end of the reporting period (and hence do not have an episode end date), are also excluded from the analysis. In addition, any records where LOS was greater than 90 days were considered to be outliers and are excluded from the average calculations.

**Table 15 Length of Stay (LOS) - overnight admitted patients**

Length of stay	All episodes	%
Less than or equal to 1 day	653	11.8
2-7 days	2006	36.4
8-14 days	1233	22.4
15-21 days	645	11.7
22-30 days	426	7.7
31-60 days	421	7.6
61-90 days	107	1.9
Greater than 90 days	24	0.4
<b>Total</b>	<b>5515</b>	<b>100.0</b>

Note: Bereavement phase records are excluded and episodes that remain open at the end of the reporting period (and hence do not have an episode end date), are also excluded from the table.

**Table 16 Time from referral to episode start - overnight admitted patients**

Time (in days)	Referral to episode start	
	All episodes	%
Less than or equal to 1 day	3263	77.4
2-7 days	488	11.6
8-14 days	102	2.4
Greater than 14 days	363	8.6
Average	2.0	-
Median	1	-

Note: Episodes where referral date or episode start date were not recorded are excluded from the table. In addition, all records where time from referral to episode start was greater than 7 days were considered to be outliers and were assumed to equal 7 days for the purpose of calculating the average and median time.

**Table 17 Time from referral to first contact and first contact to episode start - patients not admitted overnight**

Time (in days)	Referral to first contact		First contact to episode start	
	All episodes	%	All episodes	%
Less than or equal to 1 day	654	59.6	827	75.3
2-7 days	288	26.2	121	11.0
8-14 days	86	7.8	44	4.0
Greater than 14 days	70	6.4	106	9.7
Average	2.7	-	2.2	-
Median	1	-	1	-

Note: Episodes where referral date, date of first contact, or episode start date were not recorded are excluded from the table. In addition, all records where time from referral to first contact or time from first contact to episode start was greater than 7 days were considered to be outliers and were assumed to equal 7 days for the purpose of calculating the average and median time.

**Table 18** *Place of death - patients not admitted overnight*

<b>Place of death</b>	<b>All episodes</b>	<b>%</b>
Private residence	607	72.1
Residential aged care setting	91	10.8
Other location	96	11.4
Not stated/inadequately described	48	5.7
<b>Total</b>	<b>842</b>	<b>100.0</b>

## Profile of palliative care phases

**Table 19** *Number of phases by phase type*

Phase	Overnight admitted		Not admitted overnight		All episodes	
	All phases	%	All phases	%	All phases	%
Stable	1851	16.4	1368	19.0	3219	17.5
Unstable	3978	35.3	2316	32.2	6294	34.1
Deteriorating	2887	25.7	2735	38.1	5622	30.5
Terminal	1956	17.4	628	8.7	2584	14.0
Bereaved	574	5.1	137	1.9	711	3.9
Not stated/Inadequately described	8	0.1	1	0.0	9	0.0
<b>All phases</b>	<b>11254</b>	<b>100.0</b>	<b>7185</b>	<b>100.0</b>	<b>18439</b>	<b>100.0</b>

**Table 20** *Average phase length (in days) by phase and episode type*

Phase	Overnight admitted	Not overnight admitted
	All phases	All phases
Stable	9.0	14.3
Unstable	8.3	9.8
Deteriorating	6.4	10.5
Terminal	2.7	2.9
Bereaved	1.2	3.4

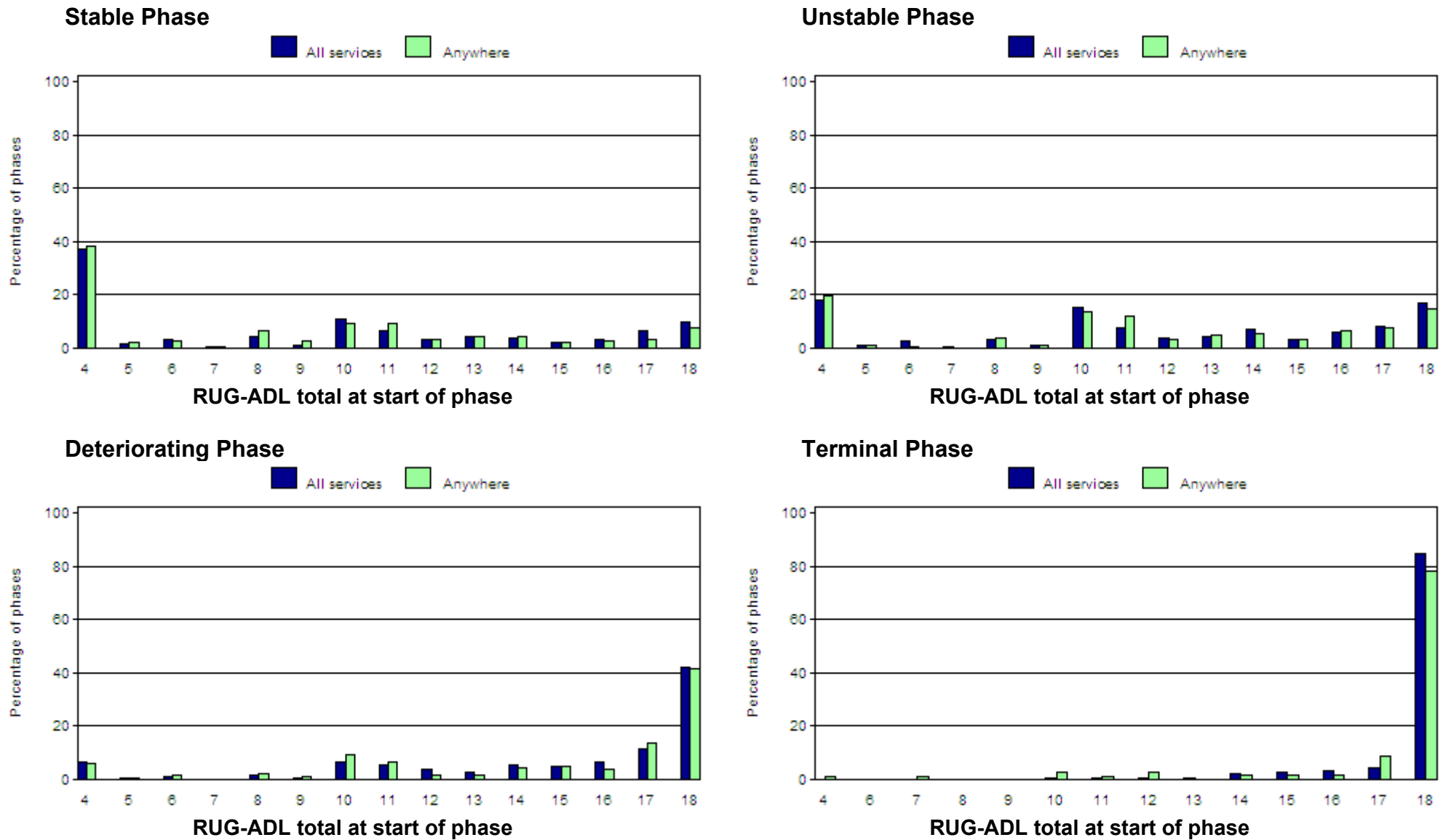
Note: Phase records where length of phase was greater than 90 days are excluded from the average calculations.



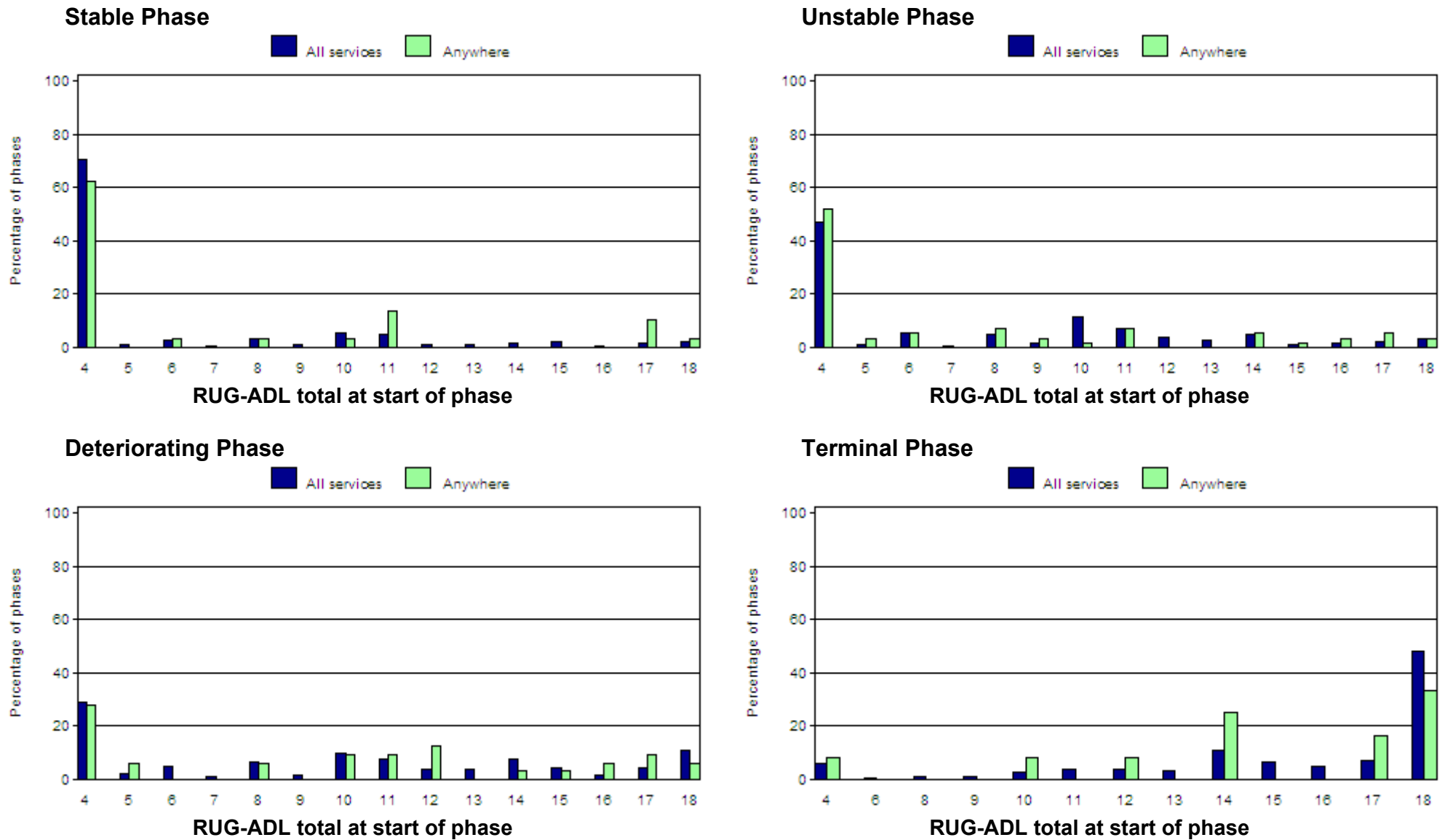
**Table 21** *Number of phases by phase type and model of care for patients who were not admitted overnight*

<b>Phase</b>	<b>Model of care</b>	<b>All phases</b>	<b>%</b>
Stable	Direct care	950	13.5
	Shared care	264	3.7
	Consultation/liaison	21	0.3
	Not stated/inadequately described	133	1.9
Unstable	Direct care	1625	23.1
	Shared care	369	5.2
	Consultation/liaison	33	0.5
	Not stated/inadequately described	289	4.1
Deteriorating	Direct care	2121	30.1
	Shared care	302	4.3
	Consultation/liaison	17	0.2
	Not stated/inadequately described	295	4.2
Terminal	Direct care	403	5.7
	Shared care	121	1.7
	Consultation/liaison	14	0.2
	Not stated/inadequately described	90	1.3
<b>Total phases</b>		<b>7047</b>	<b>100.0</b>

**Figure 2 Total RUG-ADL at beginning of phase – overnight admitted patients**



**Figure 3 Total RUG-ADL at beginning of phase – not overnight admitted patients**



**Table 22 Profile of PC Problem Severity Scores (percentages) at beginning of phase by phase type - all patients**

Phase	Problem severity	All phases			
		Absent	Mild	Moderate	Severe
Stable	Pain	24.0	51.8	19.9	4.3
	Other Symptom	7.8	41.2	40.8	10.2
	Psychological/Spiritual	17.0	47.9	26.9	8.2
	Family/Carer	25.3	41.7	24.0	9.0
Unstable	Pain	13.3	29.5	40.5	16.7
	Other Symptom	3.3	18.4	48.0	30.3
	Psychological/Spiritual	8.8	31.1	40.1	20.0
	Family/Carer	14.2	27.6	36.3	21.9
Deteriorating	Pain	15.2	34.0	34.9	15.9
	Other Symptom	2.3	17.0	45.2	35.5
	Psychological/Spiritual	9.0	29.3	37.2	24.4
	Family/Carer	11.2	23.6	36.3	28.9
Terminal	Pain	15.2	30.3	30.4	24.0
	Other Symptom	5.4	14.3	32.2	48.1
	Psychological/Spiritual	18.6	25.2	27.1	29.0
	Family/Carer	7.5	16.8	34.8	40.9

**Table 23 Reason for phase end by phase type and episode type**

Phase	Reason for phase end	Overnight admitted		Not admitted overnight	
		All phases	%	All phases	%
Stable	Phase change	816	44.1	1106	80.8
	Discharge/case closure	936	50.6	223	16.3
	Died	64	3.5	31	2.3
	Bereavement phase end	2	0.1	0	0.0
	Not stated/Inadequately described	33	1.8	8	0.6
	<i>Total</i>		<i>1851</i>	<i>100.0</i>	<i>1368</i>
Unstable	Phase change	2624	66.0	1674	72.3
	Discharge/case closure	791	19.9	514	22.2
	Died	429	10.8	102	4.4
	Bereavement phase end	11	0.3	0	0.0
	Not stated/Inadequately described	123	3.1	26	1.1
	<i>Total</i>		<i>3978</i>	<i>100.0</i>	<i>2316</i>
Deteriorating	Phase change	1569	54.3	1931	70.6
	Discharge/case closure	394	13.6	559	20.4
	Died	805	27.9	227	8.3
	Bereavement phase end	17	0.6	2	0.1
	Not stated/Inadequately described	102	3.5	16	0.6
	<i>Total</i>		<i>2887</i>	<i>100.0</i>	<i>2735</i>
Terminal	Phase change	159	8.1	129	20.5
	Discharge/case closure	67	3.4	34	5.4
	Died	1676	85.7	456	72.6
	Bereavement phase end	25	1.3	3	0.5
	Not stated/Inadequately described	29	1.5	6	1.0
	<i>Total</i>		<i>1956</i>	<i>100.0</i>	<i>628</i>

**Table 24 Average Symptom Assessment Scores (SAS) at beginning of phase by phase type**

Phase	Symptom Assessment Score	Overnight admitted	Not admitted overnight
		All phases	All phases
Stable	Insomnia	1.8	1.3
	Appetite	3.0	2.2
	Nausea	1.0	0.5
	Bowels	2.2	0.9
	Breathing	1.9	1.5
	Fatigue	5.2	4.5
	Pain	2.5	1.4
Unstable	Insomnia	3.0	2.2
	Appetite	4.4	3.5
	Nausea	2.3	1.2
	Bowels	3.7	1.5
	Breathing	3.1	2.1
	Fatigue	6.0	5.7
	Pain	4.3	2.8
Deteriorating	Insomnia	2.8	1.9
	Appetite	4.8	3.6
	Nausea	2.1	0.9
	Bowels	3.7	1.3
	Breathing	3.4	2.2
	Fatigue	6.9	6.0
	Pain	4.0	2.0

*Continued...*

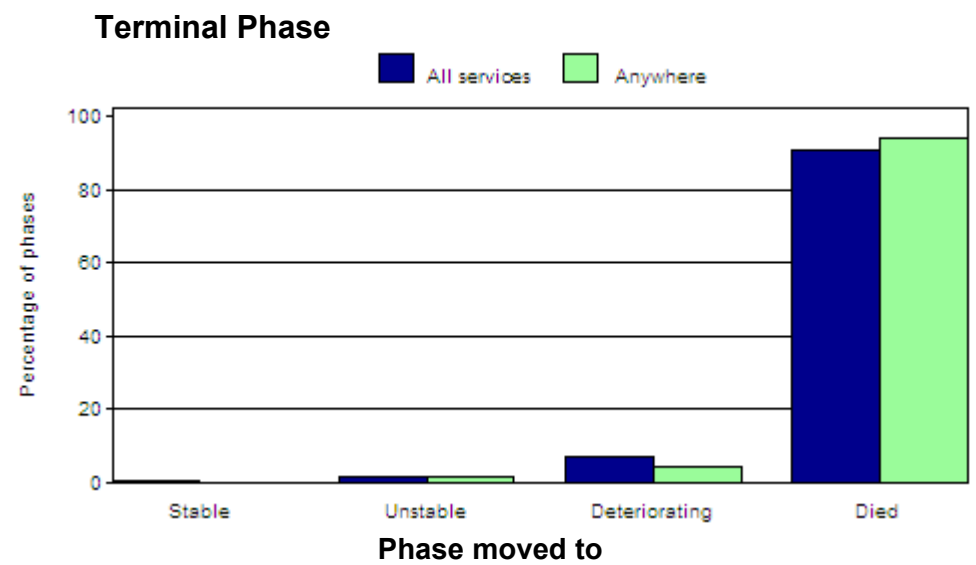
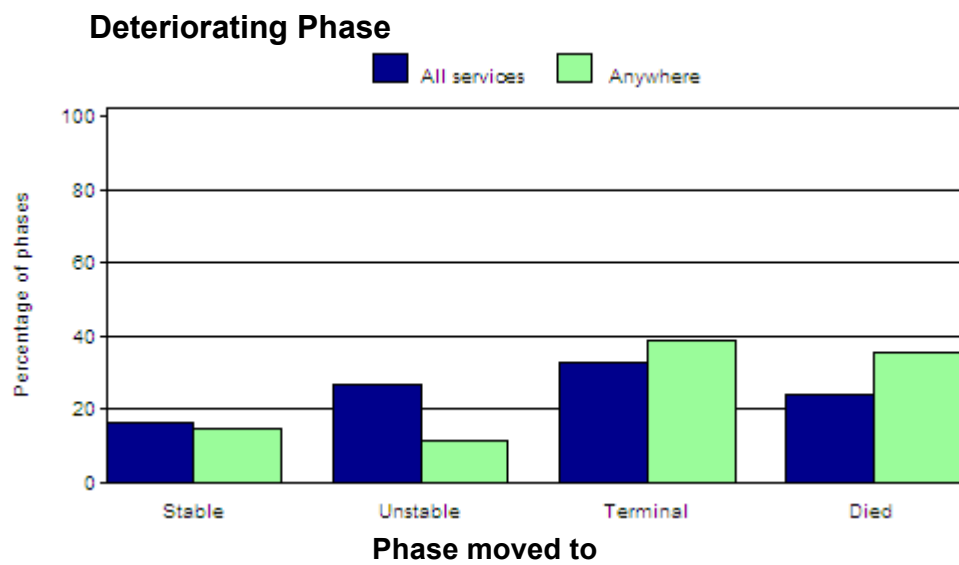
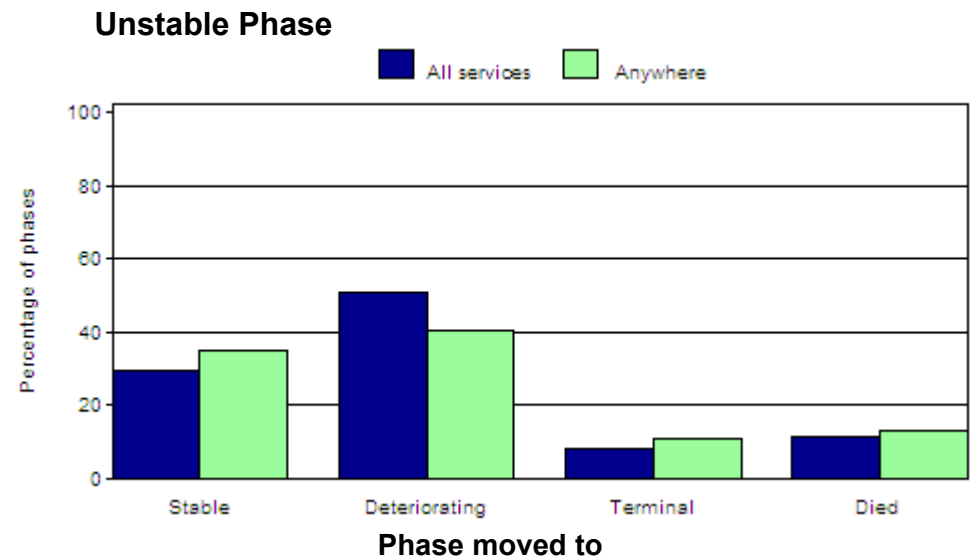
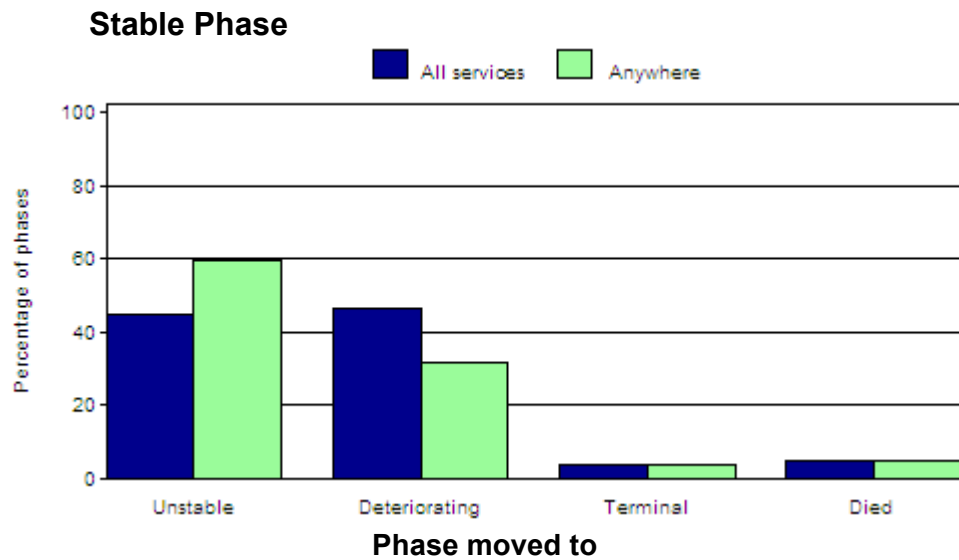
Phase	Symptom Assessment Score	Overnight admitted	Not admitted overnight
		All phases	All phases
Terminal	Insomnia	1.8	1.7
	Appetite	3.3	5.3
	Nausea	1.1	0.6
	Bowels	2.5	1.6
	Breathing	4.1	2.7
	Fatigue	5.3	7.5
	Pain	3.6	2.1

**Table 25** *Karnofsky score at phase start by episode type*

Karnofsky score	Overnight admitted		Not overnight admitted	
	All phases	%	All phases	%
Dead	30	0.3	1	0.0
Comatose or barely arousable	680	6.4	56	0.8
Totally bedfast and requiring extensive nursing care	1182	11.1	197	2.8
Almost completely bedfast	701	6.6	173	2.5
In bed more than 50% of the time	860	8.1	234	3.3
Requires considerable assistance	1045	9.8	404	5.7
Requires occasional assistance	754	7.1	449	6.4
Cares for self	298	2.8	229	3.2
Normal activity with effort	138	1.3	95	1.3
Able to carry on normal activity; minor signs or symptoms	29	0.3	37	0.5
Normal; no complaints; no evidence of disease	1	0.0	0	0.0
Not stated/inadequately described	4954	46.4	5172	73.4
<b>Total</b>	<b>10672</b>	<b>100.0</b>	<b>7047</b>	<b>100.0</b>

Note: Bereavement phase records are excluded from the table.

**Figure 4 Phase outcomes by phase - all patients**





# Data Consistency

Consistency with PCOC version 2 data standards is summarised below. Over this 6 month period consistency with patient, episode and phase level data items has been calculated. Consistency refers to completion of data items used within this report with valid entries based on the PCOC version 2 item codes. Note that some services are still collecting data according to the PCOC version 1 item codes and hence consistency with version 2 item codes may be particularly low for certain items.

In addition, some data items are not required to be completed, for example, place of death is only required for not overnight admitted patients who died. Hence the complete column in the following tables only refers to the percentage of complete records where the data item was required to be completed.

**Table 26** *Data consistency - patient level items*

<b>Data Item</b>	<b>% Complete</b>
MRN	100.0
Date of Birth	100.0
Sex	99.9
Indigenous Status	95.3
Country of birth	92.4
Main language	72.2

**Table 27** *Data consistency - episode level items*

<b>Data Item</b>	<b>% Complete</b>
Episode id	100.0
Episode type	100.0
Date of first assessment	74.8
Referral date	65.2
Referral source	78.7
Episode start date	100.0
Mode of episode start	100.0
Accommodation at episode start	90.1
Diagnosis	79.8
Episode end date	100.0
Level of support at episode start	51.1
Mode of episode end	98.5
Accommodation at episode end	61.7
Level of support at episode end	55.4
Place of death	94.3

**Table 28 Data consistency - phase level items**

<b>Data item</b>	<b>Sub-Category (where applicable)</b>	<b>Complete</b>
Phase id		100.0
Phase start date		100.0
Phase		100.0
Model of care at phase end		62.0
RUG-ADL at phase start	Bed Mobility	68.7
	Toileting	68.7
	Transfers	68.7
	Eating	68.7
PC Problem Severity at phase start	Pain	77.1
	Other Symptom	77.1
	Psychological/Spiritual	60.4
	Family/Carer	60.3
Symptom Assessment Score at phase start	Insomnia	62.7
	Appetite	61.8
	Nausea	63.6
	Bowels	63.0
	Breathing	63.5
	Fatigue	63.0
	Pain	63.9
Phase end date		100.0
Phase end reason		97.9
Karnofsky at phase start		42.7

## Services included in this report

This report presents data from the following 54 facilities:

**Table 29** *Services included in this report*

<b>Palliative Care Service</b>	<b>State</b>	<b>Begin date</b>	<b>End date</b>	<b>Months</b>
Sacred Heart Palliative Care Service	NSW	January 2008	June 2008	6
Hope Healthcare - Greenwich Hospital	NSW	January 2008	June 2008	6
Hope Healthcare - Neringah Hospital	NSW	January 2008	June 2008	6
Baringa Private Hospital	NSW	March 2008	June 2008	4
Calvary Health Care Sydney	NSW	January 2008	June 2008	6
Coffs Harbour Palliative Care Service	NSW	January 2008	June 2008	6
Camden Hospital	NSW	January 2008	June 2008	6
St Joseph's Hospital	NSW	January 2008	June 2008	6
Mt Druitt Hospital	NSW	January 2008	June 2008	6
Westmead Hospital	NSW	January 2008	June 2008	6
Hope Healthcare - Braeside Hospital	NSW	January 2008	June 2008	6
St Vincent's Hospital Lismore	NSW	January 2008	May 2008	5
Tamworth Base Hospital	NSW	January 2008	June 2008	6
Manning Rural Referral Hospital	NSW	January 2008	May 2008	5
Dubbo Base Hospital	NSW	January 2008	June 2008	6
Mercy Health Service Albury	NSW	January 2008	June 2008	6
Mercy Care Centre - Young	NSW	January 2008	June 2008	6
Port Kembla Hospital	NSW	January 2008	June 2008	6
David Berry Hospital	NSW	January 2008	June 2008	6
Calvary Mater Newcastle	NSW	January 2008	June 2008	6

*Continued...*

<b>Palliative Care Service</b>	<b>State</b>	<b>Begin date</b>	<b>End date</b>	<b>Months</b>
Werribee Mercy Hospital	Vic	January 2008	June 2008	6
Gandarra Palliative Care Unit - Ballarat	Vic	January 2008	June 2008	6
Mercy Palliative Care - Sunshine	Vic	January 2008	June 2008	6
Bundaberg Palliative Access	Qld	January 2008	June 2008	6
Canossa Private Hospital	Qld	February 2008	June 2008	5
Gladstone Hospital	Qld	January 2008	June 2008	6
Mater Private Hospital Gladstone	Qld	April 2008	June 2008	3
Cairns and Gordonvale Hospital	Qld	March 2008	June 2008	4
Hopewell Hospice	Qld	March 2008	June 2008	4
Ipswich Hospice	Qld	January 2008	June 2008	6
Ipswich Hospital	Qld	January 2008	June 2008	6
Karuna Hospice Services	Qld	January 2008	June 2008	6
Mater Adult's Hospital Brisbane	Qld	January 2008	June 2008	6
Mater Private Hospital Brisbane	Qld	January 2008	June 2008	6
Mt Olivet Hospital	Qld	January 2008	June 2008	6
The Prince Charles Hospital	Qld	January 2008	June 2008	6
Royal Brisbane and Women's Hospital	Qld	January 2008	June 2008	6
Mater Private Rockhampton	Qld	January 2008	May 2008	5
Rockhampton Base Hospital	Qld	January 2008	June 2008	6
Sunshine Coast and Cooloola Palliative Care Service	Qld	February 2008	June 2008	5
St Helena Hospice, Holy Spirit Home	Qld	January 2008	June 2008	6
Wesley Private Hospital	Qld	January 2008	June 2008	6
Mater Private Hospital Yeppoon	Qld	January 2008	June 2008	6
Southern Adelaide Palliative Care Service	SA	January 2008	June 2008	6
Modbury Hospice SA	SA	April 2008	June 2008	3

*Continued...*

<b>Palliative Care Service</b>	<b>State</b>	<b>Begin date</b>	<b>End date</b>	<b>Months</b>
Calvary Health Care Adelaide (Mary Potter Hospice)	SA	January 2008	June 2008	6
Royal Adelaide Hospital	SA	January 2008	June 2008	6
Albany Palliative Care Service	WA	January 2008	June 2008	6
Bethesda Hospital	WA	January 2008	June 2008	6
SJOG Murdoch Community Hospice	WA	January 2008	June 2008	6
Royal Perth Hospital	WA	January 2008	June 2008	6
Silver Chain Hospice Care Service	WA	January 2008	June 2008	6
Sir Charles Gairdner Hospital	WA	January 2008	June 2008	6
Calvary Health Care Canberra (Clare Holland House)	ACT	January 2008	June 2008	6

---

# Acknowledgments

## *Contributions*

PCOC wishes to acknowledge the valuable contribution made by:

- Members of the Management Advisory Board of PCOC
- Members of the Scientific and Clinical Advisory Committee of PCOC
- The many staff from palliative care services who have spent considerable time collecting, collating and correcting the data and without whose effort this report would not be possible
- The Australian Government for their funding of this initiative

## *Disclaimer*

PCOC has made every effort to ensure that the data used in this report are accurate. Data submitted to PCOC are checked for anomalies and services are asked to re-submit data prior to the production of the PCOC report. We would advise readers to use their professional judgement in considering all information contained in this report.

## *Copyright*

This work is copyright. It may be produced in whole or in part for study or training purposes subject to the inclusion of an acknowledgement of the source. It is not for commercial usage or sale. Reproduction for purposes other than those above requires the written permission of PCOC.

## PCOC Contact Details

Palliative Care Outcome Collaboration  
PCOC Central (Sth NSW, ACT, TAS & VIC)  
Centre for Health Service Development  
University of Wollongong NSW 2522  
Phone: 02 4221 4411  
Email: [dfildes@uow.edu.au](mailto:dfildes@uow.edu.au) (Sth NSW, ACT & TAS); [khendry@mercy.com.au](mailto:khendry@mercy.com.au) (VIC)  
Web: <http://chsd.uow.edu.au/pcoc/>

PCOC West (NT & WA)  
Western Australian Centre for Cancer & Palliative Care  
Curtin University of Technology Health Research Campus  
Phone: 0414090596  
Email: [H.Kendrick@curtin.edu.au](mailto:H.Kendrick@curtin.edu.au)

PCOC South (SA)  
Department of Palliative and Supportive Services  
Flinders University  
Phone: 08 8275 1732 xtn. 1427  
Email: [deborah.rawlings@flinders.edu.au](mailto:deborah.rawlings@flinders.edu.au)

PCOC North (QLD & Nth NSW)  
Institute of Health & Biomedical Innovation  
Queensland University of Technology  
Phone: 07 3138 6130  
Email: [s.mylne@qut.edu.au](mailto:s.mylne@qut.edu.au)