

2008

**PCOC report issue 4: Anywhere Palliative Care Service: October 2007 to
March 2008**

- PCOC
University of Wollongong

Follow this and additional works at: <https://ro.uow.edu.au/ahsri>

Research Online is the open access institutional repository for the University of Wollongong. For further information contact the UOW Library: research-pubs@uow.edu.au

PCOC report issue 4: Anywhere Palliative Care Service: October 2007 to March 2008

Abstract

In July 2007, Version 2 of the PCOC dataset was released. Report Issue Number 4 is the first to report against the Version 2 dataset. Fifty-one palliative care services submitted data for this report. The reporting period is October 2007 to March 2008.

Keywords

march, 2007, 4, issue, report, 2008, october, pcoc, anywhere, palliative, care, service

Publication Details

PCOC, PCOC report issue 4: Anywhere Palliative Care Service: October 2007 to March 2008 (Palliative Care Outcomes Collaboration, Centre for Health Service Development, Wollongong, Australia, 2008).
http://s3.amazonaws.com/zanran_storage/chsd.uow.edu.au/ContentPages/19111366.pdf

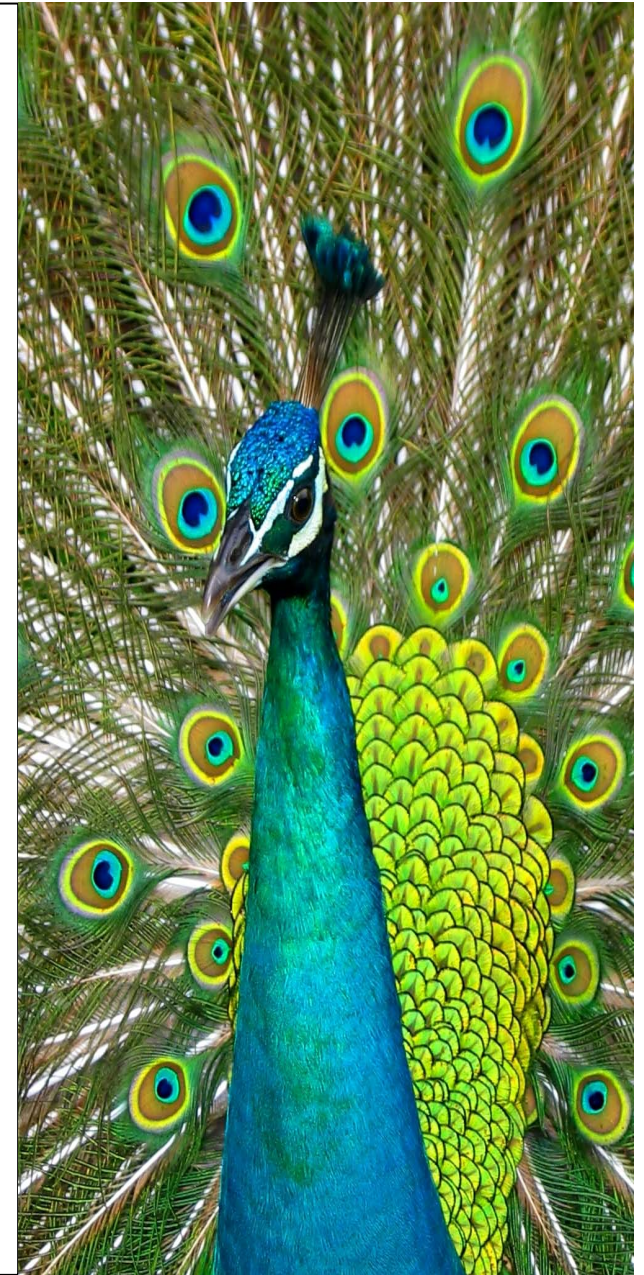


PCOC Report Issue 4

Anywhere Palliative Care Service

October 2007 to March 2008

June 2008



PCOC REPORT Issue 4

October 2007 to March 2008

Palliative Care Outcomes Collaboration (PCOC)

Table of Contents

List of Tables	4
List of Figures	6
Introduction	7
Data Summary	8
Results – patient level.....	9
Results – episode level.....	12
Results – phase level.....	25
Data consistency	37
Data received.....	40
Acknowledgements.....	43
PCOC Contact Details	44

List of Tables

Table 1	PCOC at a glance	8
Table 2	Number and percentage of patients, episodes and phases - by episode type	8
Table 3	Indigenous status - all patients	9
Table 4	Sex - all patients	9
Table 5	Main language spoken at home - all patients.....	10
Table 6	Country of birth - all patients	11
Table 7	Number of episodes by age group - all patients.....	12
Table 8	Referral source - all patients	14
Table 9	How episodes start and end - overnight admitted patients for facility	15
Table 10	How episodes start and end - overnight admitted patients for all services.....	16
Table 11	How episodes start and end - not overnight admitted patients	17
Table 12	Accommodation at episode start and end - Discharged patients	18
Table 13	Level of support at episode start and end - Discharged patients	19
Table 14	Primary diagnosis by episode type - summary	20
Table 15	Primary diagnosis by episode type	21
Table 16	Length of stay (LOS) summary - overnight admitted patients	22
Table 17	Length of stay (LOS) - overnight admitted patients.....	22
Table 18	Time from referral to first contact and to episode start by episode type - summary	23
Table 19	Time from referral to first contact and to episode start - overnight admitted patients.....	23

Table 20	Time from referral to first contact and to episode start - not overnight admitted patients.....	23
Table 21	Place of death - not overnight admitted patients.....	24
Table 22	Number of phases by phase type	25
Table 23	Average phase length (in days) by phase and episode type.....	25
Table 24	Number of phases by phase type and model of care for not overnight admitted patients.....	26
Table 25	Percentage of PC Problem Severity Scores at beginning of phase by phase type - all patients.....	31
Table 26	Reason for phase end by phase type and episode type	32
Table 27	Average Symptom Assessment Scores (SAS) at beginning of phase by phase type.....	33
Table 28	Range of Karnofsky scores at phase start - all patients.....	35
Table 29	Average Karnofsky scores at phase start by phase type - all patients.....	35
Table 30	Data consistency - patient level items.....	37
Table 31	Data consistency - episode level items.....	38
Table 32	Data consistency - phase level items.....	39
Table 33	Services providing data.....	40

List of Figures

Figure 1	Age group activity – pie chart	13
Figure 2	Total RUG-ADL at beginning of phase (low, medium and high) – overnight admitted patients	27
Figure 3	Total RUG-ADL at beginning of phase (low, medium and high) – not overnight admitted patients	28
Figure 4	Total PC Problem Severity score at beginning of phase (low, medium and high) – overnight admitted patients.....	29
Figure 5	Total PC Problem Severity score at beginning of phase (low, medium and high) – not overnight admitted patients.....	30
Figure 6	Phase progression by phase type.....	..36

Introduction

Funding

Palliative Care Outcomes Collaboration (PCOC) was formed in mid-2005 and is funded by the Australian Government. It is a voluntary, quality initiative which aims to assist palliative care services to measure the standard and quality of care which is a stated goal of the National Palliative Care Strategy. In part, this will be achieved by collecting and analysing data and reporting findings to services.

Dataset

The development of the PCOC dataset has evolved after broad consultation with services and representatives of peak organisations and approval by the Scientific and Clinical Advisory Committee (SCAC). The PCOC database as at March 2008 contained data on 20,817 episodes of care and 37,742 phases of care.

PCOC reports

PCOC provides analysis of each services data and also compares this to the national data. The clinical assessment tools - Phase of Care, PC Problem Severity Score, Symptom Assessment Scale, Australian-modified Karnofsky and RUG-ADL provide measures of quality and outcomes.

PCOC Report Issue 4

In July 2007, Version 2 of the PCOC dataset was released. Report Issue Number 4 is the first to report against the Version 2 dataset. Fifty-one palliative care services submitted data for this report. The reporting period is October 2007 to March 2008.

Points to note

Some services have not yet made the transition from collecting Version 1 to Version 2 data. Hence, services submitting Version 1 data are excluded from any tables reporting on the Version 2 data items. In addition, interpret all figures carefully as results may appear distorted due to low frequencies being represented as percentages.

Some tables throughout the report may be incomplete. This is because some items may not be applicable to a particular service or it may be due to data quality issues. Please use the following key when interpreting the tables:

- The item is not applicable
- * The item was unable to be calculated due to missing or invalid data.

Data Summary

This report presents data from a total of 51 services. During the reporting period data were provided for a total of 5939 patients, with 7291 episodes and 16529 phases. Table 1 provides an overview of the data submitted to date by all participating facilities.

Table 1 *PCOC at a glance*

	1st report (Apr06-Sep06)	2nd report (Oct06-Mar07)	3rd report (Apr07-Sep07)	4th report (Oct07-Mar08)
Number of facilities providing data	8	28	31	51
Number of patients	2230	4310	4207	5939
Number of episodes	3093	5367	5066	7291
Number of phases	2565	7149	11499	16529

Table 2 *Number and percentage of patients, episodes and phases - by episode type*

Episode type	Overnight admitted		Not overnight admitted		Total	
	Anywhere	All Services	Anywhere	All Services	Anywhere	All Services
Number of patients*	223	3878	139	2374	356	5939
Number of episodes	224	4483	141	2808	365	7291
Number of phases	495	9486	377	7043	872	16529
Percentage of patients**	62.6	65.3	39.0	40.0	100	100
Percentage of episodes	61.4	61.5	38.6	38.5	100	100
Percentage of phases	56.8	57.4	43.2	42.6	100	100

Notes:

* Patients who have been in both an overnight admitted and not overnight admitted setting are only counted once in the Total column and hence numbers may not add to the total.

** Patients who have been in both an overnight admitted and not overnight admitted setting are only counted once in the Total column and hence percentages may not add to 100.

Results - Patient level

Table 3 Indigenous Status - all patients

Indigenous Status	Anywhere	All Services
Aboriginal but not Torres Strait Islander origin	7	74
Torres Strait Islander but not Aboriginal origin	4	28
Both Aboriginal and Torres Strait Islander origin	2	7
Neither Aboriginal nor Torres Strait Islander origin	311	5234
Not stated/Inadequately described	32	596
Total	356	5939

Table 4 Sex - all patients

Sex	Anywhere	%	All Services	%
Male	201	56.5	3328	56.0
Female	154	43.3	2601	43.8
Not stated/inadequately described	1	0.3	10	0.2
Total	356	100.0	5939	100.0

Table 5 *Main language spoken at home - all patients*

Main language spoken at home	Anywhere	%	All Services	%
English	176	49.4	3089	52.0
Danish	23	6.5	114	1.9
Italian	3	0.8	64	1.1
Greek	3	0.8	19	0.3
Cantonese	2	0.6	17	0.3
Croatian	1	0.3	15	0.3
Macedonian	2	0.6	10	0.2
Mandarin	0	0.0	10	0.2
Arabic (including Lebanese)	0	0.0	9	0.2
Burmese	0	0.0	4	0.1
All other languages	9	2.5	89	1.5
Not stated/inadequately described	137	38.5	2499	42.1
Total	356	100.0	5939	100.0

Note: The most common 10 languages from the benchmark dataset are reported separately, all other languages have been grouped together to form the category *All other languages*.

Table 6 Country of birth - all patients

Country of birth	Anywhere	%	All Services	%
Australia	208	58.4	3472	58.5
England	32	9.0	458	7.7
Italy	3	0.8	155	2.6
Scotland	10	2.8	103	1.7
Germany	4	1.1	74	1.2
New Zealand	4	1.1	72	1.2
Netherlands	7	2.0	69	1.2
Greece	4	1.1	60	1.0
China	5	1.4	54	0.9
Croatia	2	0.6	41	0.7
All other countries	38	10.7	679	11.4
Not stated/inadequately described	39	11.0	702	11.8
Total	356	100.0	5939	100.0

Note: The most common 10 countries from the benchmark dataset are reported separately, all other countries have been grouped together to form the category *All other countries*.

Results - Episode level

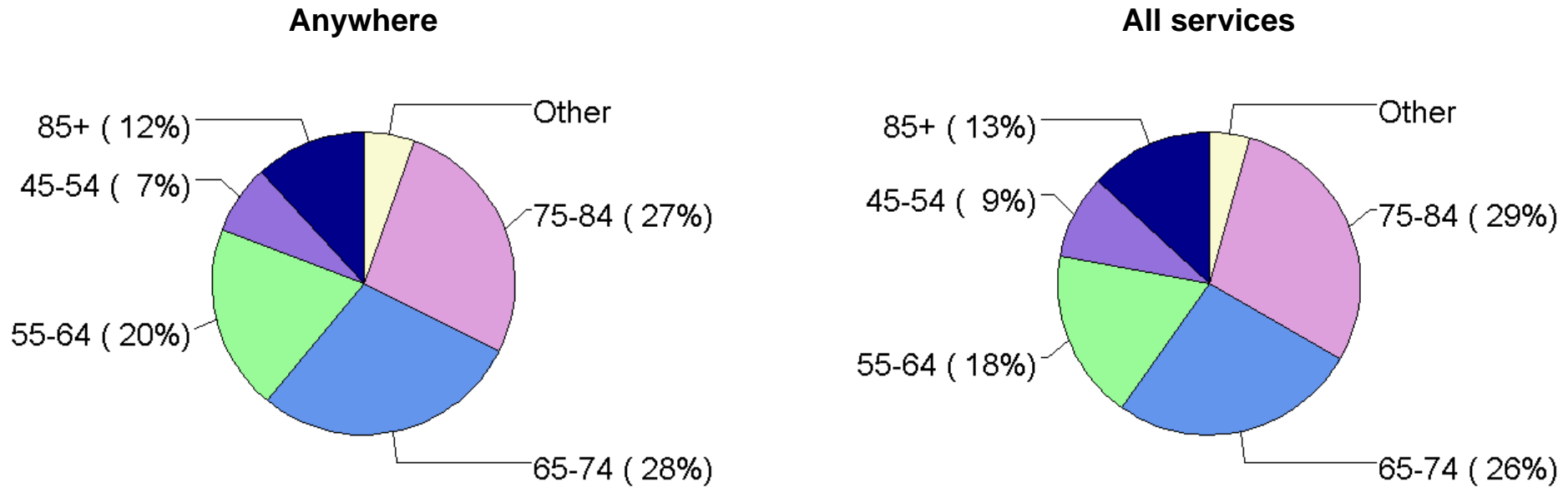
Episode level activity is presented below by 10 year age group. The average age for all patients at Anywhere Palliative Care Service during this period was 70 years old and for all services was 70 years old.

Table 7 *Number of episodes by age group - all patients*

Age group	Anywhere	%	All Services	%
< 15	1	0.3	6	0.1
15-24	6	1.6	36	0.5
25-34	3	0.8	53	0.7
35-44	10	2.7	219	3.0
45-54	27	7.4	656	9.0
55-64	72	19.7	1326	18.2
65-74	104	28.5	1924	26.4
75-84	98	26.8	2115	29.0
85+	43	11.8	955	13.1
Not stated/inadequately described	1	0.0	1	0.0
Total	365	100.0	7291	100.0

Episode level activity by age group is also presented graphically below

Figure 1 Age group activity pie chart - all patients



Note: The pie charts include all patients, both overnight admitted and not overnight admitted.

Table 8 Referral source - all patients

Referral source	Anywhere	%	All Services	%
Public hospital - other than inpatient palliative care unit	84	23.0	1762	24.2
Self, carer(s), family or friends	9	2.5	146	2.0
Private hospital - other than inpatient palliative care unit	24	6.6	409	5.6
Public palliative care inpatient unit/hospice	6	1.6	118	1.6
Private palliative care inpatient unit/hospice	3	0.8	42	0.6
General Medical Practitioner rooms	54	14.8	986	13.5
Specialist Medical Practitioner rooms	17	4.7	281	3.9
Community-based palliative care agency	25	6.8	491	6.7
Community-based service	5	1.4	117	1.6
Residential aged care facility	5	1.4	30	0.4
Other	6	1.6	187	2.6
Not stated/inadequately described	127	34.8	2722	37.3
Total	365	100.0	7291	100.0

Table 9 *How episodes start and end - overnight admitted patients for Anywhere*

Mode of episode start	Mode of episode end					Total
	Discharged to usual accommodation	Discharged to interim accommodation	Discharged to another hospital	Death	All other reasons	
Admitted from usual accommodation	49	4	4	75	2	134
Admitted from other than usual accommodation	1	0	0	1	0	2
Admitted (transferred) from another hospital	9	4	3	45	3	64
Admitted (transferred) from acute care in other ward	0	1	1	9	0	11
All other reasons	2	0	0	0	0	2
Total	61	9	8	130	5	213
As a percentage of each start mode						
Admitted from usual accommodation	36.6	3.0	3.0	56.0	1.5	100.0
Admitted from other than usual accommodation	50.0	0.0	0.0	50.0	0.0	100.0
Admitted (transferred) from another hospital	14.1	6.3	4.7	70.3	4.7	100.0
Admitted (transferred) from acute care in other ward	0.0	9.1	9.1	81.8	0.0	100.0
All other reasons	100.0	0.0	0.0	0.0	0.0	100.0
Total	28.6	4.2	3.8	61.0	2.3	100.0

Note: All episodes where episode start mode or episode end mode was Not stated/inadequately described are excluded from the table. Episodes that remain open at the end of the reporting period are also excluded.

Table 10 *How episodes start and end - overnight admitted patients for all services*

Mode of episode start	Mode of episode end					Total
	Discharged to usual accommodation	Discharged to interim accommodation	Discharged to another hospital	Death	All other reasons	
Admitted from usual accommodation	931	68	73	1362	59	2493
Admitted from other than usual accommodation	11	21	2	54	2	90
Admitted (transferred) from another hospital	195	37	50	1006	25	1313
Admitted (transferred) from acute care in other ward	55	20	15	184	5	279
All other reasons	7	1	0	30	0	38
Total	1199	147	140	2636	91	4213
As a percentage of each start mode						
Admitted from usual accommodation	37.3	2.7	2.9	54.6	2.4	100.0
Admitted from other than usual accommodation	12.2	23.3	2.2	60.0	2.2	100.0
Admitted (transferred) from another hospital	14.9	2.8	3.8	76.6	1.9	100.0
Admitted (transferred) from acute care in other ward	19.7	7.2	5.4	65.9	1.8	100.0
All other reasons	18.4	2.6	0.0	78.9	0.0	100.0
Total	28.5	3.5	3.3	62.6	2.2	100.0

Note: All episodes where episode start mode or episode end mode was Not stated/inadequately described are excluded from the table. Episodes that remain open at the end of the reporting period are also excluded.

Table 11 *How episodes start and end - not overnight admitted patients*

Mode of episode start	Mode of episode end					Total
	Discharged/ case closure	Admitted for inpatient palliative care	Admitted for inpatient acute care	Transfer for primary care	Death	
Anywhere						
New referral	14	19	19	2	52	106
Transfer from being an o/n PC patient	0	9	2	0	2	13
Total	14	28	21	2	54	119
As a percentage of each start mode						
New referral	13.2	17.9	17.9	1.9	49.1	100.0
Transfer from being an o/n PC patient	0.0	69.2	15.4	0.0	15.4	100.0
Total	11.8	23.5	17.6	1.7	45.4	100.0
All services						
New referral	443	345	333	42	741	1904
Transfer from being an o/n PC patient	75	120	87	10	103	395
Total	518	465	420	52	844	2299
As a percentage of each start mode						
New referral	23.3	18.1	17.5	2.2	38.9	100.0
Transfer from being an o/n PC patient	19.0	30.4	22.0	2.5	26.1	100.0
Total	22.5	20.2	18.3	2.3	36.7	100.0

Note: All episodes where episode start mode or episode end mode was Not stated/inadequately described are excluded from the table. Episodes that remain open at the end of the reporting period are also excluded.

Table 12 Accommodation at episode start and end - Discharged patients

Accommodation at episode Start	Accommodation at episode end				Total
	Private residence	Low level care	High level care	All other	
Anywhere					
Private residence	37	2	1	6	46
Residential aged care (low level care)	1	0	0	0	1
Residential aged care (high level care)	0	0	0	0	0
All other	0	0	0	0	0
Total	38	2	1	6	47
As a percentage of each start accommodation					
Private residence	80.4	4.3	2.2	13.0	100.0
Residential aged care (low level care)	100.0	0.0	0.0	0.0	100.0
Residential aged care (high level care)	-	-	-	-	-
All other	-	-	-	-	-
Total	80.9	4.3	2.1	12.8	100.0
All services					
Private residence	809	13	37	82	941
Residential aged care (low level care)	2	14	4	4	24
Residential aged care (high level care)	2	0	23	2	27
All other	4	0	3	6	13
Total	817	27	67	94	1005
As a percentage of each start accommodation					
Private residence	86.0	1.4	3.9	8.7	100.0
Residential aged care (low level care)	8.3	58.3	16.7	16.7	100.0
Residential aged care (high level care)	7.4	0.0	85.2	7.4	100.0
All other	30.8	0.0	23.1	46.2	100.0
Total	81.3	2.7	6.7	9.4	100.0

Note: All episodes where accommodation at episode start or end was Not stated/inadequately described are excluded from the table.

Episodes that ended in death and episodes that remain open at the end of the reporting period are also excluded.

Table 13 *Level of support at episode start and end - Patients discharged to private residence*

Level of support at episode Start	Level of support at episode end			Total
	Lives alone (with/without support)	Lives with others (with/without support)	Other arrangements	
Anywhere				
Lives alone (with/without support)	1	3	0	4
Lives with others (with/without support)	1	20	0	21
Other arrangements	0	0	0	0
Total	2	23	0	25
As a percentage of each start support				
Lives alone (with/without support)	25.0	75.0	0.0	100.0
Lives with others (with/without support)	4.8	95.2	0.0	100.0
Other arrangements	-	-	-	-
Total	8.0	92.0	0.0	100.0
All services				
Lives alone (with/without support)	67	26	0	93
Lives with others (with/without support)	15	399	0	414
Other arrangements	0	0	0	0
Total	82	425	0	507
As a percentage of each start support				
Lives alone (with/without support)	72.0	28.0	0.0	100.0
Lives with others (with/without support)	3.6	96.4	0.0	100.0
Other arrangements	-	-	-	-
Total	16.2	83.8	0.0	100.0

Note: All episodes where level of support at episode start or end was Not stated/inadequately described are excluded from the table. Episodes that ended in death and episodes that remain open at the end of the reporting period are also excluded.

Table 14 Primary diagnosis by episode type - summary

Primary diagnosis	Overnight admitted				Not overnight admitted			
	Anywhere	%	All services	%	Anywhere	%	All services	%
Malignant	97	43.3	1783	39.8	100	70.9	2112	75.2
Non-malignant	11	4.9	163	3.6	19	13.5	288	10.3
Not stated/inadequately described	116	51.8	2537	56.6	22	15.6	408	14.5
Total	224	100.0	4483	100.0	141	100.0	2808	100.0

Table 15 Primary diagnosis by episode type

Primary diagnosis	Overnight admitted				Not overnight admitted			
	Anywhere	%	All services	%	Anywhere	%	All services	%
Malignant								
Bone and soft tissue	8	8.4	71	4.1	5	8.8	68	6.1
Breast	6	6.3	152	8.7	3	5.3	124	11.0
CNS	0	0.0	35	2.0	3	5.3	33	2.9
Colorectal	19	20.0	205	11.7	5	8.8	102	9.1
Gynaecological	3	3.2	91	5.2	6	10.5	98	8.7
Haematological	2	2.1	76	4.3	2	3.5	99	8.8
Head and neck	7	7.4	105	6.0	5	8.8	83	7.4
Lung	21	22.1	406	23.2	11	19.3	192	17.1
Pancreas	3	3.2	66	3.8	4	7.0	59	5.3
Prostate	5	5.3	151	8.6	1	1.8	60	5.3
Skin	4	4.2	80	4.6	4	7.0	47	4.2
Other GIT	6	6.3	109	6.2	3	5.3	69	6.1
Other Urological	7	7.4	91	5.2	1	1.8	27	2.4
Other Malignancy	4	4.2	113	6.5	4	7.0	62	5.5
<i>All malignant</i>	<i>95</i>	<i>100.0</i>	<i>1751</i>	<i>100.0</i>	<i>57</i>	<i>100.0</i>	<i>1123</i>	<i>100.0</i>
Non-malignant								
Cardiovascular	1	9.1	51	31.3	5	50.0	36	21.1
HIV/AIDS	1	9.1	1	0.6	0	0.0	2	1.2
Kidney failure	1	9.1	11	6.7	0	0.0	18	10.5
Neurological disease	3	27.3	41	25.2	3	30.0	42	24.6
Respiratory failure	1	9.1	16	9.8	1	10.0	32	18.7
Other non-malignancy	4	36.4	43	26.4	1	10.0	41	24.0
<i>All non-malignant</i>	<i>11</i>	<i>100.0</i>	<i>163</i>	<i>100.0</i>	<i>10</i>	<i>100.0</i>	<i>171</i>	<i>100.0</i>

Note: All episodes where diagnosis was Not stated/inadequately described or where the breakdown of malignant and non-malignant was not provided are excluded from the table.

Table 16 *Length of Stay (LOS) summary - overnight admitted patients*

Length of stay	Anywhere	All services
Average length of episode	13.2	13.6
Median length of episode	8	9
Average number of phases per episode	2.2	2.1

Note: Episodes that remain open at the end of the reporting period (and hence do not have an episode end date), are excluded from the table. In addition, any records where LOS was greater than 90 days were considered to be outliers and are excluded from the average calculations.

Table 17 *Length of Stay (LOS) - overnight admitted patients*

Length of stay	Anywhere	%	All Services	%
Less than or equal to 1 day	21	9.9	414	9.8
2-7 days	77	36.2	1491	35.4
8-14 days	44	20.7	935	22.2
15-21 days	28	13.1	501	11.9
22-30 days	19	8.9	361	8.6
31-60 days	22	10.3	390	9.3
61-90 days	1	0.5	78	1.9
Greater than 90 days	1	0.5	40	1.0
Total	213	100.0	4210	100.0

Note: Episodes that remain open at the end of the reporting period (and hence do not have an episode end date), are excluded from the table.

Table 18 *Time from referral to first contact and to episode start by episode type - summary*

Time (in days)	Overnight admitted				Not overnight admitted			
	Referral to contact		Referral to episode start		Referral to contact		Referral to episode start	
	Anywhere	All services	Anywhere	All services	Anywhere	All services	Anywhere	All services
Average	1.6	1.7	1.9	1.9	1.9	2.0	2.2	2.2
Median	1	1	1	1	1	1	1	1

Note: Episodes where referral date, date of first contact, or episode start date were not recorded are excluded from the table. In addition, all records where time from referral to first contact or episode start was greater than 7 days were considered to be outliers and were assumed to equal 7 days for the purpose of calculating the average and median time.

Table 19 *Time from referral to first contact and to episode start - overnight admitted patients*

Time (in days)	Referral to contact				Referral to episode start			
	Anywhere	%	All Services	%	Anywhere	%	All Services	%
Less than or equal to 1 day	87	82.9	1496	83.1	81	77.1	1431	79.5
2-7 days	11	10.5	192	10.7	13	12.4	183	10.2
8-14 days	1	1.0	29	1.6	2	1.9	39	2.2
Greater than 14 days	6	5.7	84	4.7	9	8.6	148	8.2

Note: Episodes where referral date, date of first contact, or episode start date were not recorded are excluded from the table.

Table 20 *Time from referral to first contact and to episode start - not overnight admitted patients*

Time (in days)	Referral to contact				Referral to episode start			
	Anywhere	%	All Services	%	Anywhere	%	All Services	%
Less than or equal to 1 day	57	80.3	1045	78.7	54	76.1	1004	75.7
2-7 days	9	12.7	147	11.1	8	11.3	133	10.0
8-14 days	1	1.4	47	3.5	3	4.2	49	3.7
Greater than 14 days	4	5.6	88	6.6	6	8.5	141	10.6

Note: Episodes where referral date, date of first contact, or episode start date were not recorded are excluded from the table.

Table 21 *Place of death - not overnight admitted patients*

Place of death	Anywhere	%	All Services	%
Private residence	28	50.9	443	52.4
Residential aged care setting	3	5.5	33	3.9
Other location	10	18.2	219	25.9
Not stated/inadequately described	14	25.5	151	17.8
Total	55	100.0	846	100.0

Results - phase level

Table 22 Number of phases by phase type

Phase	Overnight admitted				Not overnight admitted			
	Anywhere	%	All services	%	Anywhere	%	All services	%
Stable	67	13.5	1336	14.1	67	17.8	1360	19.3
Unstable	173	34.9	3285	34.6	112	29.7	2306	32.7
Deteriorating	131	26.5	2437	25.7	139	36.9	2590	36.8
Terminal	93	18.8	1750	18.4	46	12.2	625	8.9
Bereaved	31	6.3	666	7.0	13	3.4	161	2.3
Not stated/Inadequately described	0	0.0	12	0.1	0	0.0	1	0.0
All phases	495	100.0	9486	100.0	377	100.0	7043	100.0

Table 23 Average phase length (in days) by phase and episode type

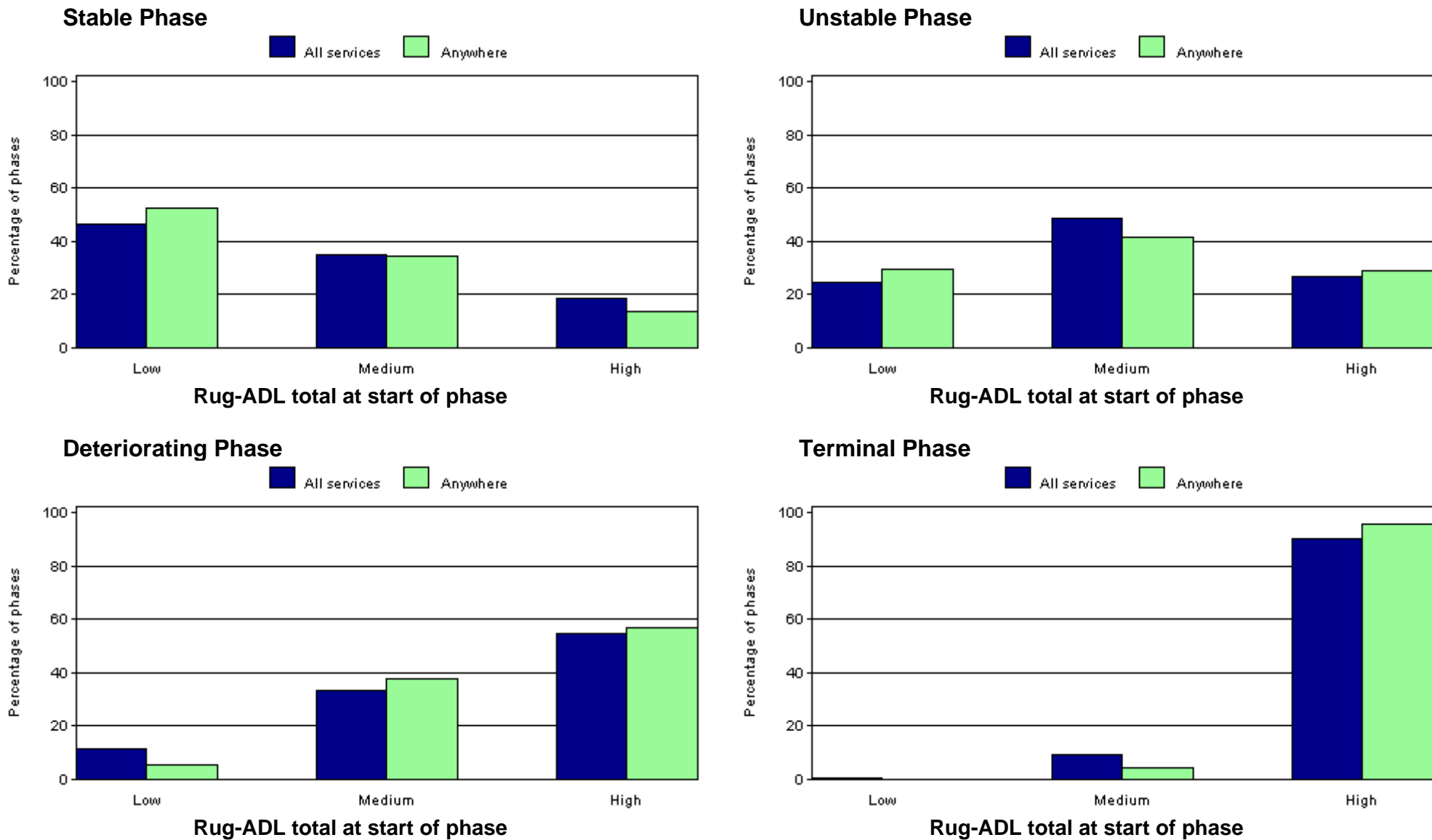
Phase	Overnight admitted		Not overnight admitted	
	Anywhere	All services	Anywhere	All services
Stable	7.5	9.0	8.3	10.6
Unstable	8.9	8.7	8.5	8.7
Deteriorating	5.6	6.5	8.9	9.8
Terminal	2.3	2.8	2.0	2.8
Bereaved	2.2	1.3	1.3	1.5

Note: Phase records where length of phase was greater than 90 days are excluded from the average calculations.

Table 24 *Number of phases by phase type and model of care for not overnight admitted patients*

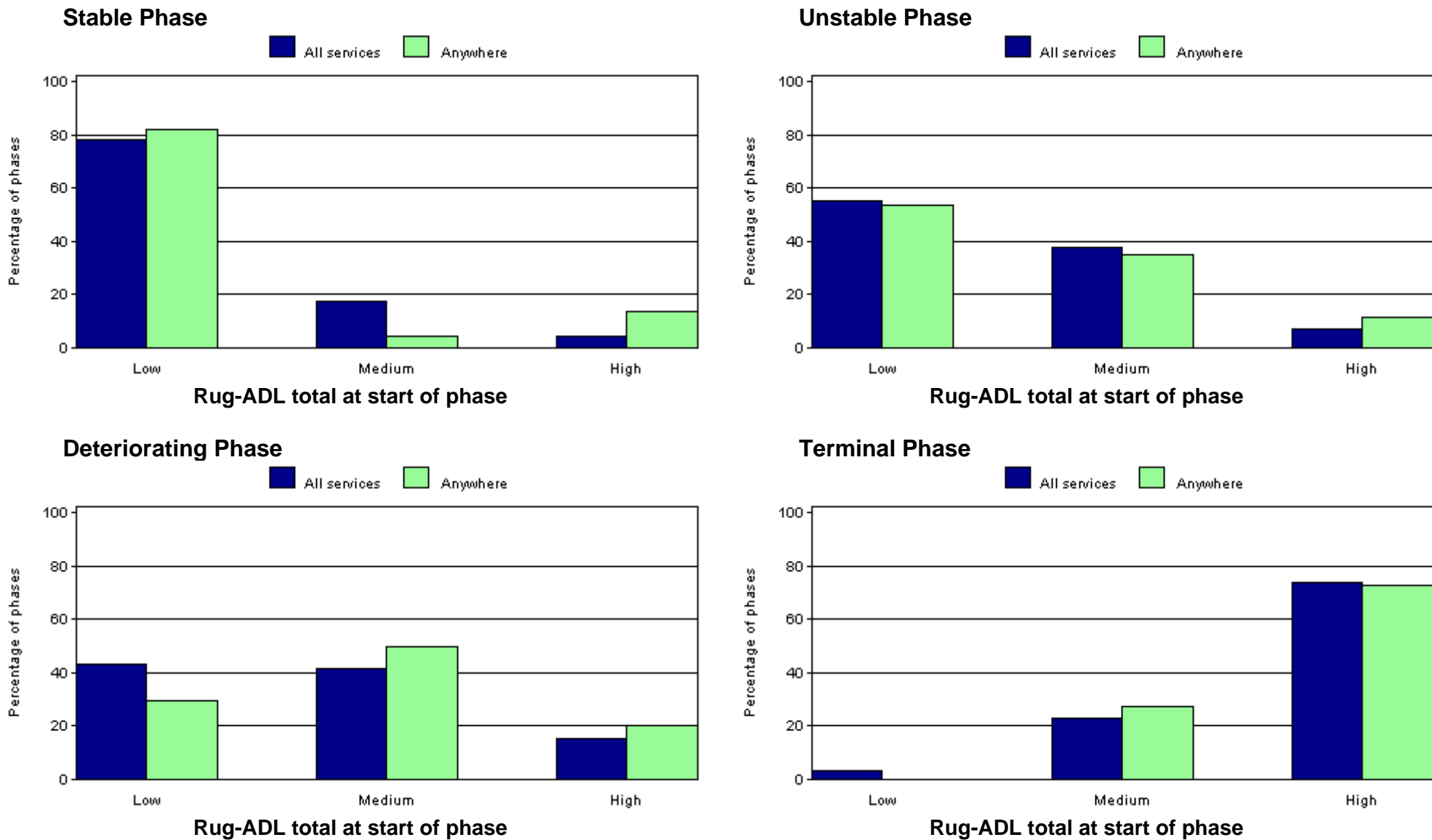
Phase	Model of care	Anywhere	%	All services	%
Stable	Direct care	46	12.6	945	13.7
	Shared care	7	1.9	131	1.9
	Consultation/liaison	1	0.3	79	1.1
	Not stated/inadequately described	13	3.6	205	3.0
Unstable	Direct care	75	20.6	1555	22.6
	Shared care	14	3.8	226	3.3
	Consultation/liaison	2	0.5	128	1.9
	Not stated/inadequately described	21	5.8	397	5.8
Deteriorating	Direct care	98	26.9	1844	26.8
	Shared care	6	1.6	154	2.2
	Consultation/liaison	3	0.8	146	2.1
	Not stated/inadequately described	32	8.8	446	6.5
Terminal	Direct care	26	7.1	370	5.4
	Shared care	4	1.1	58	0.8
	Consultation/liaison	5	1.4	58	0.8
	Not stated/inadequately described	11	3.0	139	2.0
Total phases		364	100.0	6881	100.0

Figure 2 Total Rug-ADL at beginning of phase (low, medium and high) – overnight admitted patients



Key: 4-8 = Low, 9-16 = Medium, 17-18 = High

Figure 3 Total Rug-ADL at beginning of phase (low, medium and high) – not overnight admitted patients



Key: 4-8 = Low, 9-16 = Medium, 17-18 = High

Figure 4 Total PC Problem Severity score at beginning of phase (low, medium and high) – overnight admitted patients

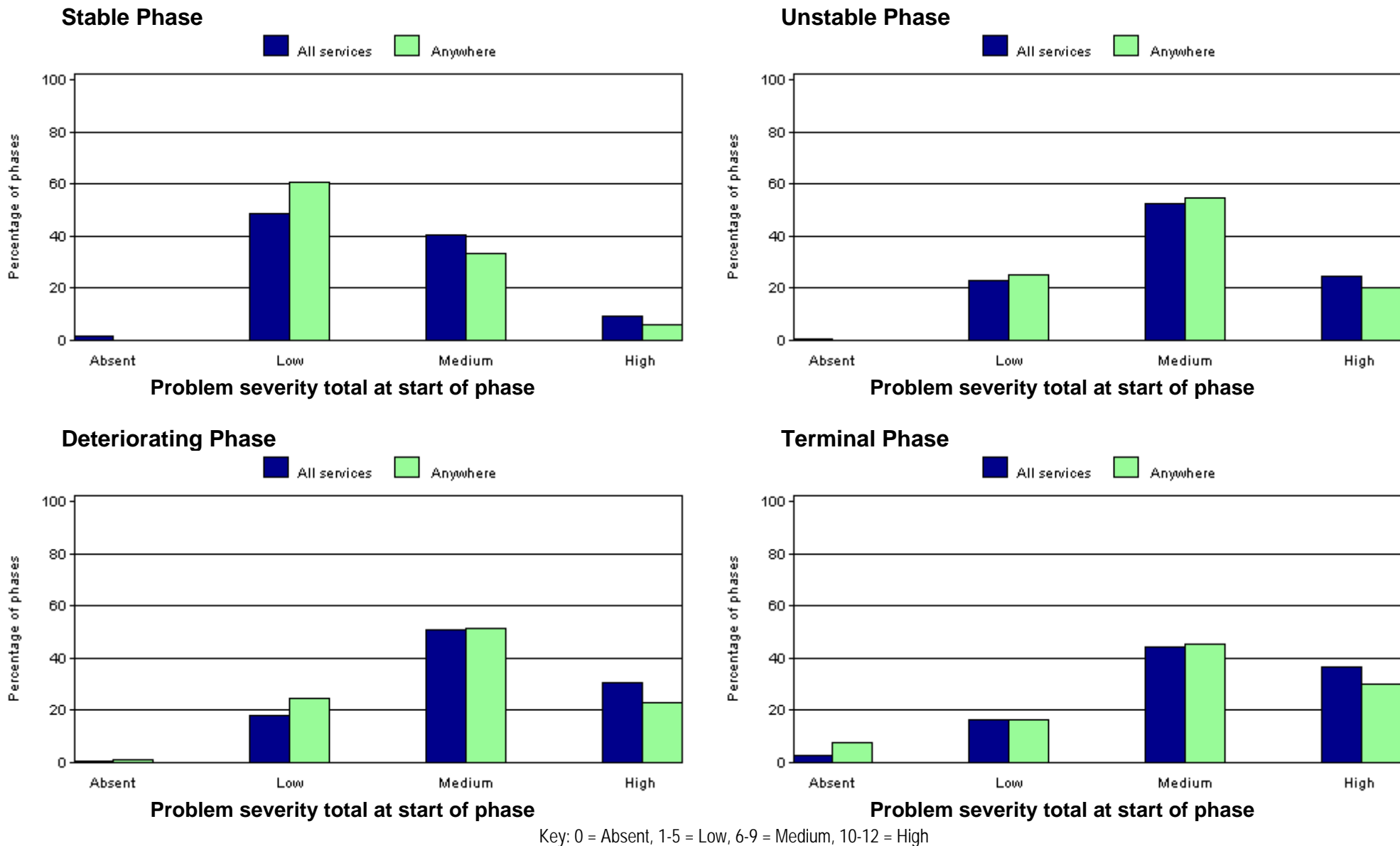
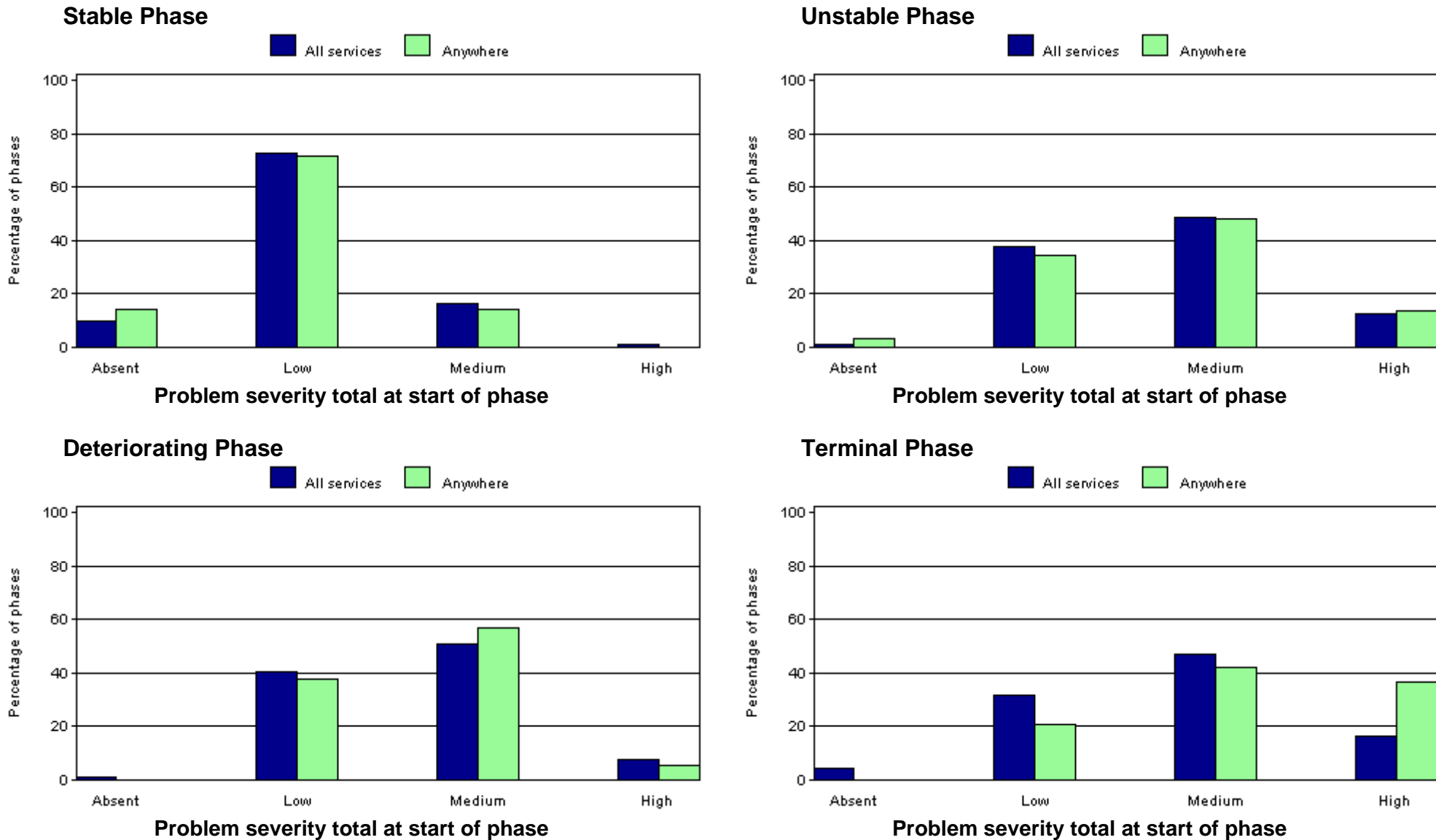


Figure 5 Total PC Problem Severity score at beginning of phase (low, medium and high) – not overnight admitted patients



Key: 0 = Absent, 1-5 = Low, 6-9 = Medium, 10-12 = High

Table 25 *Percentage of PC Problem Severity scores at beginning of phase by phase type - all patients*

Phase	Problem severity	Absent		Mild		Moderate		Severe	
		Anywhere	All services	Anywhere	All services	Anywhere	All services	Anywhere	All services
Stable	Pain	40.4	31.1	44.7	47.4	14.9	16.3	0.0	5.2
	Other Symptom	17.0	13.0	36.2	36.3	42.6	39.4	4.3	11.2
	Psychological/Spiritual	21.8	17.9	50.0	47.2	20.5	26.1	7.7	8.7
	Family/Carer	28.2	24.0	39.7	40.7	24.4	24.1	7.7	11.2
Unstable	Pain	14.6	16.5	35.8	28.2	36.5	36.2	13.1	19.1
	Other Symptom	4.4	4.8	14.6	16.5	48.2	46.2	32.8	32.4
	Psychological/Spiritual	8.8	8.6	28.4	29.2	42.3	39.2	20.6	23.1
	Family/Carer	12.9	12.3	27.8	28.1	37.6	34.8	21.6	24.8
Deteriorating	Pain	21.7	16.2	38.3	34.8	29.6	33.6	10.4	15.4
	Other Symptom	4.3	3.7	12.2	14.5	54.8	44.7	28.7	37.0
	Psychological/Spiritual	10.0	7.4	31.3	27.0	39.4	39.2	19.4	26.4
	Family/Carer	10.0	9.6	26.9	24.6	35.0	34.6	28.1	31.2
Terminal	Pain	21.2	19.8	36.5	28.7	24.7	29.6	17.6	21.9
	Other Symptom	9.4	8.0	5.9	11.7	36.5	30.9	48.2	49.4
	Psychological/Spiritual	18.2	15.3	29.1	23.1	27.3	28.3	25.5	33.4
	Family/Carer	10.8	7.0	16.2	14.2	29.7	32.5	43.2	46.3

Table 26 Reason for phase end by phase type and episode type

Phase	Reason for phase end	Overnight admitted				Not overnight admitted			
		Anywhere	%	All services	%	Anywhere	%	All services	%
Stable	Phase change	38	56.7	597	44.7	49	73.1	964	70.9
	Discharge/case closure	23	34.3	588	44.0	9	13.4	235	17.3
	Died	1	1.5	42	3.1	2	3.0	36	2.6
	Bereavement phase end	0	0.0	1	0.1	0	0.0	1	0.1
	Not stated/Inadequately described	5	7.5	108	8.1	7	10.4	124	9.1
	<i>Total</i>		<i>67</i>	<i>100.0</i>	<i>1336</i>	<i>100.0</i>	<i>67</i>	<i>100.0</i>	<i>1360</i>
Unstable	Phase change	107	61.8	2104	64.0	82	73.2	1536	66.6
	Discharge/case closure	33	19.1	602	18.3	16	14.3	447	19.4
	Died	11	6.4	258	7.9	10	8.9	143	6.2
	Bereavement phase end	0	0.0	9	0.3	0	0.0	0	0.0
	Not stated/Inadequately described	22	12.7	312	9.5	4	3.6	180	7.8
	<i>Total</i>		<i>173</i>	<i>100.0</i>	<i>3285</i>	<i>100.0</i>	<i>112</i>	<i>100.0</i>	<i>2306</i>
Deteriorating	Phase change	75	57.3	1366	56.1	101	72.7	1752	67.6
	Discharge/case closure	17	13.0	232	9.5	21	15.1	522	20.2
	Died	29	22.1	567	23.3	8	5.8	187	7.2
	Bereavement phase end	1	0.8	9	0.4	0	0.0	1	0.0
	Not stated/Inadequately described	9	6.9	263	10.8	9	6.5	128	4.9
	<i>Total</i>		<i>131</i>	<i>100.0</i>	<i>2437</i>	<i>100.0</i>	<i>139</i>	<i>100.0</i>	<i>2590</i>
Terminal	Phase change	17	18.3	230	13.1	14	30.4	160	25.6
	Discharge/case closure	1	1.1	31	1.8	1	2.2	40	6.4
	Died	63	67.7	1259	71.9	31	67.4	416	66.6
	Bereavement phase end	2	2.2	15	0.9	0	0.0	1	0.2
	Not stated/Inadequately described	10	10.8	215	12.3	0	0.0	8	1.3
	<i>Total</i>		<i>93</i>	<i>100.0</i>	<i>1750</i>	<i>100.0</i>	<i>46</i>	<i>100.0</i>	<i>625</i>

Table 27 Average Symptom Assessment Scores (SAS) at beginning of phase by phase type

Phase	Symptom Assessment Score	Overnight admitted		Not overnight admitted	
		Anywhere	All services	Anywhere	All services
Stable	Insomnia	1.0	1.7	1.3	1.4
	Appetite	2.7	2.7	2.6	2.5
	Nausea	0.9	1.0	0.9	0.5
	Bowels	1.5	2.2	1.0	1.1
	Breathing	2.4	2.0	1.6	1.6
	Fatigue	4.9	5.3	5.5	4.7
	Pain	2.1	2.4	1.4	1.5
Unstable	Insomnia	2.5	3.0	2.2	2.3
	Appetite	4.5	4.4	4.3	3.7
	Nausea	2.5	2.5	1.6	1.4
	Bowels	3.2	3.6	1.8	1.9
	Breathing	3.3	2.9	2.2	2.2
	Fatigue	5.8	6.1	6.1	5.7
	Pain	3.8	4.4	2.9	2.9
Deteriorating	Insomnia	3.1	2.9	1.7	2.0
	Appetite	4.9	5.0	4.1	3.7
	Nausea	2.3	2.2	1.2	1.0
	Bowels	4.6	3.9	1.4	1.5
	Breathing	4.2	3.6	2.2	2.3
	Fatigue	6.8	7.1	6.1	5.9
	Pain	3.8	4.2	2.2	2.1

Continued...

Phase	Symptom Assessment Score	Overnight admitted		Not overnight admitted	
		Anywhere	All services	Anywhere	All services
Terminal	Insomnia	1.1	1.9	1.3	1.7
	Appetite	4.7	4.0	4.0	4.6
	Nausea	1.0	1.2	1.0	0.8
	Bowels	3.1	2.8	2.1	1.7
	Breathing	3.4	4.2	4.0	3.2
	Fatigue	5.6	6.0	7.3	7.0
	Pain	2.5	3.8	2.3	2.5

Table 28 *Range of Karnofsky scores at phase start - all patients*

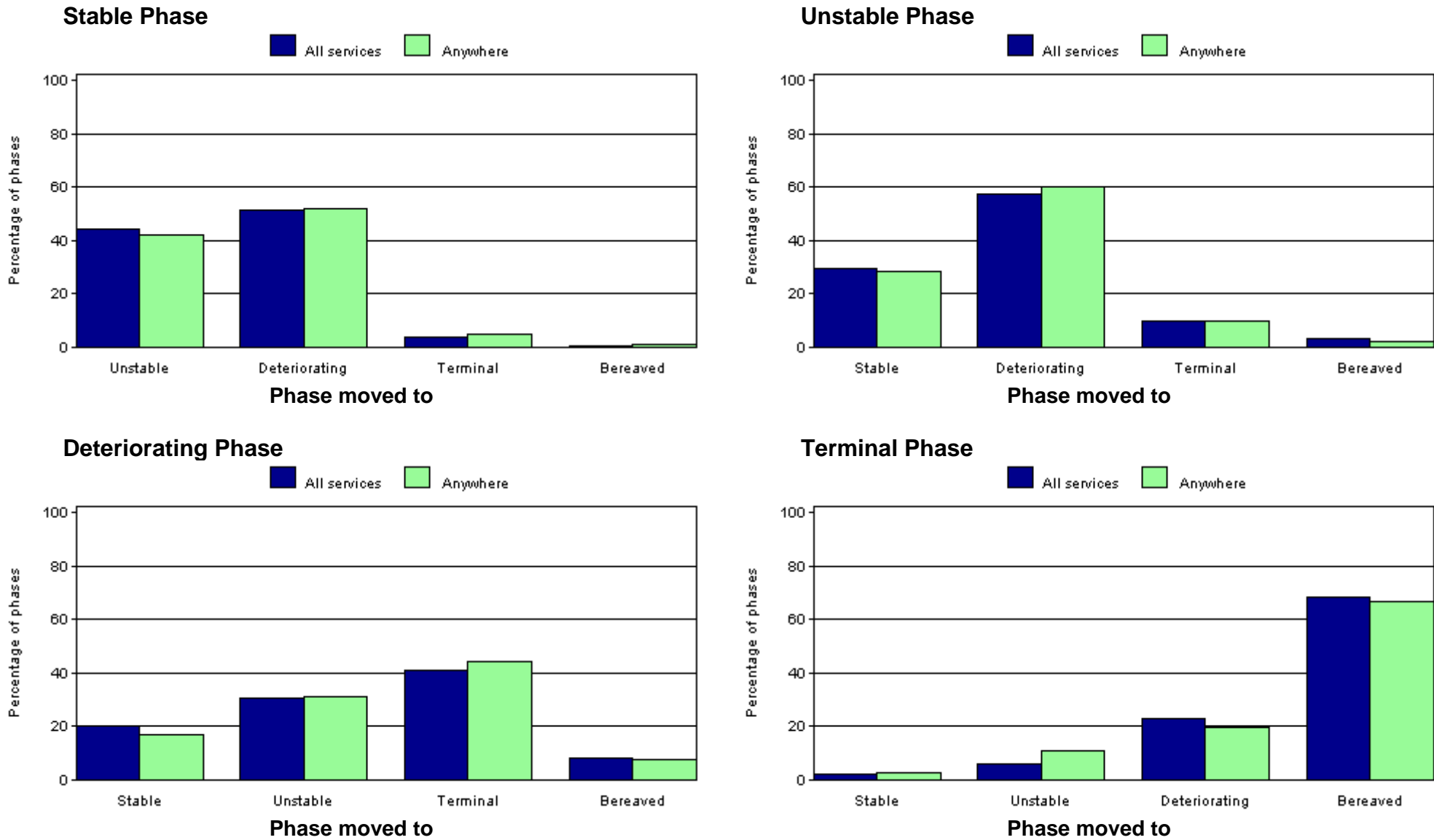
Karnofsky score	Anywhere	%	All Services	%
Dead	2	0.2	32	0.2
Comatose or barely arousable	32	3.9	517	3.3
Totally bedfast and requiring extensive nursing care	51	6.2	932	5.9
Almost completely bedfast	39	4.7	606	3.9
In bed more than 50% of the time	44	5.3	751	4.8
Requires considerable assistance	65	7.9	1103	7.0
Requires occasional assistance	45	5.4	831	5.3
Cares for self	26	3.1	473	3.0
Normal activity with effort	15	1.8	219	1.4
Able to carry on normal activity; minor signs or symptoms	9	1.1	98	0.6
Normal; no complaints; no evidence of disease	0	0.0	5	0.0
Not stated/inadequately described	500	60.4	10122	64.5
Total	828	100.0	15689	100.0

Note: Bereavement phase records are excluded from the table.

Table 29 *Average Karnofsky scores at phase start by phase type - all patients*

Phase	Anywhere	All services
Stable	59.0	57.5
Unstable	52.3	49.6
Deteriorating	38.7	40.1
Terminal	16.1	17.1

Figure 6 Phase progression by phase type - all patients



Data Consistency

Consistency with PCOC version 2 data standards is summarised below. Over this 6 month period consistency with patient, episode and phase level data items for Anywhere and for all services has been calculated. Consistency refers to completion of data items used within this report with valid entries based on the PCOC version 2 item codes. Note that some services are still collecting data according to the PCOC version 1 item codes and hence consistency with version 2 item codes may be particularly low for certain items.

In addition, some data items are not required to be completed, for example, place of death is only required for not overnight admitted patients who died. Hence the complete column in the following tables only refers to the percentage of complete records where the data item was required to be completed.

Table 30 *Data consistency - patient level items*

PCS	Anywhere	All Services
Data Item	% Complete	% Complete
MRN	100.0	100.0
Date of Birth	100.0	100.0
Sex	99.7	99.8
Indigenous Status	91.0	90.0
Country of birth	89.0	88.2
Main language	61.5	57.9

Table 31 *Data consistency - episode level items*

PCS	Anywhere	All Services
Data Item	% Complete	% Complete
Episode id	100.0	100.0
Episode type	100.0	100.0
Date of first assessment	64.4	60.1
Referral date	53.2	50.0
Episode start date	100.0	100.0
Mode of episode start	100.0	99.9
Accommodation at episode start	82.7	84.2
Diagnosis	62.2	59.6
Episode end date	100.0	99.8
Level of support at episode start	49.8	46.0
Mode of episode end	99.7	99.2
Accommodation at episode end	51.1	50.5
Level of support at episode end	68.4	64.0
Place of death	74.5	82.2

Table 32 *Data consistency - phase level items*

Data item	Sub-Category (where applicable)	Anywhere %Complete	All Services %Complete
Phase id		100.0	100.0
Phase start date		100.0	100.0
Phase		100.0	99.9
Model of care		50.6	51.7
RUG-ADL at phase start	Bed Mobility	69.3	69.0
	Toileting	69.3	69.0
	Transfers	100.0	99.9
	Eating	69.3	69.0
PC Problem Severity at phase start	Pain	-	82.3
	Other Symptom	-	82.3
	Psychological/Spiritual	63.5	62.6
	Family/Carer	63.6	62.5
Symptom Assessment Score at phase start	Insomnia	54.7	52.8
	Appetite	54.0	52.0
	Nausea	55.7	53.6
	Bowels	55.6	53.0
	Breathing	56.1	53.6
	Fatigue	55.2	53.0
	Pain	56.5	53.9
Phase end date		100.0	100.0
Phase end reason		91.9	91.0
Karnofsky at phase start		40.6	35.5
Karnofsky at phase end		17.9	15.7

Data Received

This report presents data from the following 51 facilities:

Table 33 Services providing data

Palliative Care Service	State	Begin date	End date	Months
Sacred Heart	NSW	October 2007	March 2008	6
Hope Healthcare - Greenwich Hospital	NSW	October 2007	March 2008	6
Hope Healthcare - Neringah Hospital	NSW	October 2007	March 2008	6
Calvary Health Care Sydney	NSW	October 2007	March 2008	6
Coffs Harbour	NSW	October 2007	March 2008	6
Camden Hospital	NSW	October 2007	March 2008	6
St Joseph's Hospital	NSW	October 2007	March 2008	6
Mt Druitt Hospital	NSW	October 2007	February 2008	5
Westmead Hospital	NSW	October 2007	March 2008	6
Hope Healthcare - Braeside Hospital	NSW	October 2007	March 2008	6
St Vincent's Hospital, Lismore	NSW	October 2007	March 2008	6
Tamworth Base Hospital	NSW	October 2007	March 2008	6
Manning Rural Referral Hospital	NSW	October 2007	March 2008	6
Mercy Health Service Albury	NSW	October 2007	March 2008	6
Mercy Care Centre - Young	NSW	October 2007	March 2008	6
Port Kembla Hospital	NSW	October 2007	March 2008	6
David Berry Hospital	NSW	October 2007	March 2008	6
Calvary Mater Newcastle Hospital	NSW	October 2007	March 2008	6
Peel Community	NSW	October 2007	March 2008	6
Werribee Mercy Hospital	VIC	October 2007	March 2008	6

Continued...

Palliative Care Service	State	Begin date	End date	Months
Gandarra Palliative Care Unit - Ballarat	VIC	October 2007	March 2008	6
Mercy Western Palliative Care	VIC	November 2007	March 2008	5
Peter MacCallum Cancer Centre	VIC	October 2007	December 2007	3
Canossa Private Hospital	QLD	October 2007	March 2008	6
Gladstone Health	QLD	October 2007	March 2008	6
Ipswich Hospice	QLD	January 2008	March 2008	3
Ipswich Hospital	QLD	November 2007	March 2008	5
Karuna Hospice Services	QLD	November 2007	March 2008	5
Logan-Beaudesert Hospital	QLD	October 2007	March 2008	6
Mater Adult's Hospital Brisbane	QLD	October 2007	March 2008	6
Mater Private Hospital Brisbane	QLD	October 2007	March 2008	6
Mt Olivet Hospital	QLD	October 2007	March 2008	6
The Prince Charles Hospital	QLD	October 2007	March 2008	6
Royal Brisbane and Women's Hospital	QLD	October 2007	February 2008	5
Mater Private Rockhampton	QLD	October 2007	March 2008	6
Rockhampton Base Hospital	QLD	October 2007	January 2008	4
Sunshine Coast and Cooloola	QLD	February 2008	March 2008	2
St Helena Hospice, Holy Spirit Home	QLD	January 2008	March 2008	3
Townsville Hospital	QLD	January 2008	March 2008	3
Wesley Private Hospital	QLD	October 2007	March 2008	6
Mater Private Hospital Yeppoon	QLD	October 2007	March 2008	6
Southern Adelaide	SA	October 2007	March 2008	6
Calvary Health Care Adelaide (Mary Potter Hospice)	SA	October 2007	March 2008	6
Royal Adelaide Hospital	SA	January 2008	March 2008	3
Albany	WA	October 2007	March 2008	6

Continued...

Palliative Care Service	State	Begin date	End date	Months
Bethesda Hospital	WA	October 2007	March 2008	6
SJOG Murdoch Community Hospice	WA	November 2007	March 2008	5
Royal Perth Hospital	WA	November 2007	March 2008	5
Silver Chain Hospice Care Service	WA	October 2007	March 2008	6
Sir Charles Gairdner Hospital	WA	January 2008	March 2008	3
Calvary Health Care Canberra (Clare Holland House)	ACT	October 2007	March 2008	6

Acknowledgements

Contributions

PCOC wishes to acknowledge the valuable contribution made by:

- Members of the Management Advisory Board of PCOC
- Members of the Scientific and Clinical Advisory Committee of PCOC
- The many staff from palliative care services who have spent considerable time collecting, collating and correcting the data and without whose effort this report would not be possible
- The Australian Government for their funding of this initiative

Disclaimer

PCOC has made every effort to ensure that the data used in this report are accurate. Data submitted to PCOC are checked for anomalies and services are asked to re-submit data prior to the production of the PCOC report. We would advise readers to use their professional judgement in considering all information contained in this report.

Copyright

This work is copyright. It may be produced in whole or in part for study or training purposes subject to the inclusion of an acknowledgement of the source. It is not for commercial usage or sale. Reproduction for purposes other than those above requires the written permission of PCOC.

PCOC Contact Details

Palliative Care Outcome Collaboration
PCOC Central (Sth NSW, ACT, TAS & VIC)
Centre for Health Service Development
University of Wollongong NSW 2522
Phone: 02 4221 4411

Email: dfildes@uow.edu.au (Sth NSW, ACT & TAS); khendry@mercy.com.au (VIC)

Web: <http://chsd.uow.edu.au/pcoc/>

PCOC West (NT & WA)
Western Australian Centre for Cancer & Palliative Care
Curtin University of Technology
Phone: 08 9489 2878

Email: Helen.Walker@health.wa.gov.au

PCOC South (SA)
Department of Palliative and Supportive Services
Flinders University
Phone: 08 8275 1732 xtn. 1427
Email: deborah.rawlings@flinders.edu.au

PCOC North (QLD & Nth NSW)
Institute of Health & Biomedical Innovation
Queensland University of Technology
Phone: 07 3138 6130
Email: jane.mceniery@qut.edu.au