

CAMPUS NEWS

A creative exchange: Wollongong and Yirrkala, NT

As part of National Aboriginal and Torres Strait Islander week, there will be a particularly significant exhibition in the Long Gallery, Faculty of Creative Arts from 29 June.

It will be opened by the principal of the Yirrkala Community School in the Northern Territory, Nalwarri Ngurruwutthun.

'Freshwater/Saltwater' is an exciting collection of art from Yirrkala, a remote Aboriginal community in north-eastern Arnhem Land, in the Northern Territory.

This show demonstrates the exchange process between artists in the Faculty of Creative Arts and artists in Yirrkala.

Vivid batiks, prints of animals, birds, plants, woven baskets and intricate barkpaintings will all be on display from Yirrkala.

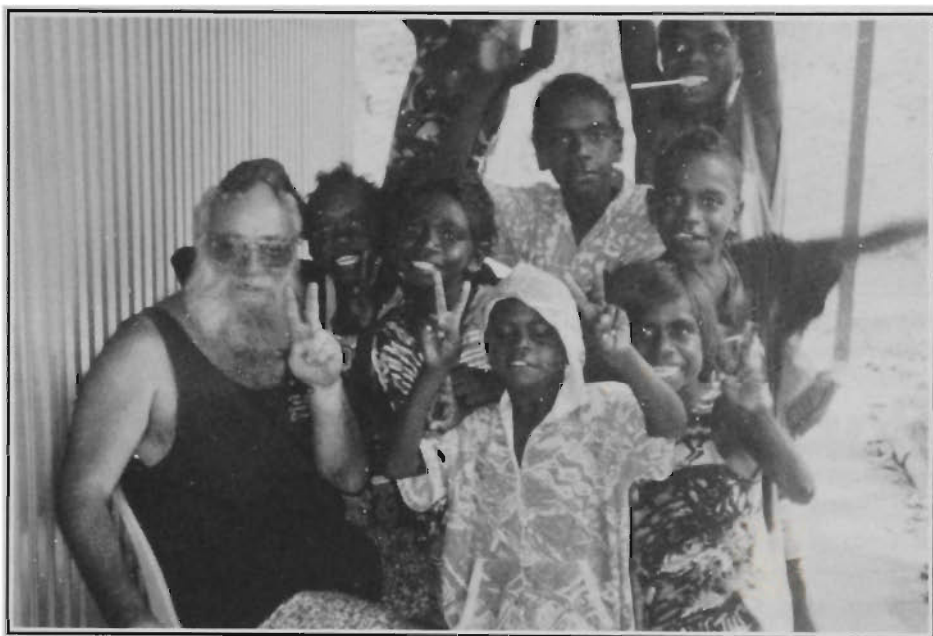
Many of the textiles and prints to be exhibited are the result of two interchanges between Wollongong and Yirrkala, in September 1994 and January/February 1995, when printmakers Leonie Molloy and Rachel Burns, textile artists Patricia King and Sue Blanchfield, and sculptor Ian Gentle visited Yirrkala.

Return visits by Yirrkala artists are to be made to the Faculty of Creative Arts in July and September.

Yirrkala's community of about 2000 people speak 16 clan languages, with English as a second language, though children are not bilingual until they go to school.

Intensive contact with Europeans began in Yirrkala with the establishment of a Methodist Mission in 1934.

Until this time people of the north-



Sculptor and lecturer in the Faculty of Creative Arts, Ian Gentle, with children from the Yirrkala school in the Northern Territory.

east coast of Arnhem Land lived by hunting and gathering.

By the 1960s, most of the population lived at one of the mission settlements.

The land rights movements of the 1970s resulted in a movement out to settlements known as the Homelands which are scattered around the hinterland of Yirrkala and are a re-affirmation of the importance of traditional clan lands.

These are active centres of art and ceremony.

Application to the National Priority Reserve Fund by Professor Sharon Bell in late 1994 secured for the Faculty of Creative Arts a substantial grant of \$95,000 to foster and develop a relationship between the two artistic communities.

The proposal for this exchange was first put forward by Banduk Marmburra Marika to her friend in the Faculty, Diana Wood Conroy.

Banduk, an Artist-in-Residence in the Faculty of Creative Arts in 1991 is a printmaker whose works are held in major national collections, including the Permanent Collection of the University of Wollongong.

The Yolngu people of Yirrkala, through Banduk Marika, have articulated the need for local art training to expand skills and techniques as identified by the community (not outside individuals or organisations).

Through its multi-disciplinary, professionally-oriented educational programs and exhibition opportunities, Wollongong University's Faculty of Creative Arts is well placed to meet this need.

With the development of close relationships between individual artists, and between the Faculty of Creative Arts and the Yirrkala Community School, the Faculty aims to establish a long-term, reciprocal educational and artistic exchange.



Manager, Employee Development and Services, Pacific Power, Sam McLoughlin, and Interim Dean of the Faculty of Commerce, Associate Professor Rob Castle, celebrate the agreement between the University and Pacific Power

Partnership with Pacific Power



In a joint agreement with the Faculty of Commerce and Pacific Power, a management education program is now on offer to Pacific Power business managers.

Managers will undertake a training program at the Pacific Power training facilities which will lead to the award-

ing of one subject in the Graduate Certificate in Management.

Pacific Power staff will be encouraged to complete the remaining three subjects of the award through avenues such as the PAGE Consortium.

At a recent function to mark this agreement, Head of the Department

of Management, Professor Michael Hough, thanked Pacific Power for selecting the University of Wollongong to work with.

He said it had been an amicable and smooth effort in getting the project in operation.

Acting Dean of the Faculty, Professor Rob Castle, emphasised the importance of basic skills in degree training and how the opportunity for companies like Pacific Power to add specialised skills to this training was an important part of the Graduate Certificate in Management.

Manager of Employee Development and Services at Pacific Power, Mr Sam McLoughlin, said the function was a great opportunity to formalise the partnership and hoped it would be the start of a partnership that would grow in many ways.

He said the program gives the ability to provide a flexible training approach and the benefits are seen in a real way by both organisations.

Mr McLoughlin thanked the working team and both organisations for their patience in the last two to three years and said it was great to see that the project had reached an operational level.

University of Wollongong Conservatorium of Music

presents

The Business & Professional Women's Club of Wollongong

Lunchtime Concerts

Bruce Gordon Theatre, Illawarra Performing Arts Centre
12.30-1.30pm

Friday 28 July

Liesa Adlington (guitar), Rita Woolhouse (cello)
Works by Bach, Carrega, Morel, Pass and Ellis

Friday 4 August

Wollongong Conservatorium Trio: Emma Knott (flute), Penelope Chapple (oboe) and Marilyn Meier (piano), with Vera Troitsky (soprano)
Works by Telemann, Leigh and Rachmaninov

Friday 13 October

Phillida Green (piano), Elizabeth Green (piano)
Works by Gershwin and Rachmaninov

FREE ADMISSION (Unreserved seating)

International research training program



From left: Dr Ruth Greene, April Potts, Shantissee White, Tara Price, Dr Kerry Ayre, and seated, Mazetta Boyd and Dinitra White

The University of Wollongong and Johnson C. Smith University in Charlotte, North Carolina, are participating in a collaborative research training program funded by the Fogarty International Center and the Office of Research on Minority Health of the National Institutes of Health in the United States.

This program provides international research training opportunities for minority undergraduate students to conduct biomedical and behavioural research.

The program also expands the cultural perspective of students and faculties, and establishes linkages between US scientists and established research centres and departments

abroad.

Johnson C. Smith University has a consortia relationship with two other institutions in North Carolina and has an active international studies program.

According to Professor Ruth Greene from the Psychology Department of Johnson C. Smith University, 'the University of Wollongong is well recognised for its international programs and research, and consequently provides an excellent environment to conduct research'.

'The training grant award encourages minority students to pursue degrees and careers in biomedical and behavioural research and broadens their undergraduate education

through international experiences,' she said.

For the last two years, staff from the University of Wollongong Faculties of Science and Health and Behavioural Sciences have participated in this collaborative project.

This session five students and two faculty members from Johnson C. Smith University have participated in the international research program.

The students, who have been enrolled as Study Abroad students, combine a session of course work with research under supervision from University of Wollongong academic staff.

Biology students, Dinitra White and April Potts, worked with Associate Professor Tony Hulbert, Dr Kerry Ayre and PhD student Jorn Helge on a research study in the Department of Biological Sciences.

Shantissee White and Marzetta Boyd worked with senior lecturer Patrick Heaven in the Department of Psychology.

Tara Price, worked with Associate Professor Mark Anshel and PhD student Geoff Pearce also in the Department of Psychology.

Dr Greene and Dr Joseph Fail, as visiting professors, were based in the Faculty of Health and Behavioural Sciences. They conducted research on health, ageing, and ecology and public health issues.

Department of Accounting and Finance Doctoral Consortium

The 1995 Doctoral Consortium will be held on Friday 7 July at the Union Function Centre from 9am-5pm.

This is an all-day research seminar to which all are invited. The aim of the day is to focus attention on research strategies for accounting and finance.

The morning will be set aside for presentations and the afternoon for discussion, debate and questions. This will be the seventh annual consortium.

Visiting speakers will be Dr David Cooper (Francis Winspear Professor of Business, University of Alberta) and Professor Tony Tinker (Baruch College, City University of New York). Both are editors of the journal *Critical Perspectives on Accounting*.

Lunch and morning and afternoon tea will be provided. Visitors are invited to contribute towards the cost of the day with a donation of \$25.

Inquiries: Bob Williams, phone (042) 213 718 or 213 616, fax (042) 214 297.

Five Islands Press spots tomorrow's leading writers

Five Islands Press, which is based in the Faculty of Creative Arts and which publishes the literary journal, SCARP, recently published the first books of poetry by Sydney poets Peter Boyle and James Bradley.

These works have been short listed for the prestigious and highly competitive National Book Council awards, the Banjos.

More than 80 poets compete for the six places offered under these awards.

It is a remarkable achievement for Five Islands Press to get two of their authors into the finals.

Peter Boyle's book *Coming Home from the World* and *Paper Nautilus* by James Bradley were published through the New Poets Program, a joint venture between Five Islands Press and SCARP.

Mozart and Beethoven

Richard Tognetti will lead the acclaimed Australian Chamber Orchestra at a concert of symphonic music by Mozart and Beethoven at the University on Friday, 25 August.

Assistance needed with International Friendship program

The International Office operates an International Friendship Program (IFP).

The office is urgently seeking new participants from the University and the general public to make contact with new international students beginning their studies in Spring Session 1995.

The IFP is designed to promote cultural exchange between members of the community and individual international students.

The aim is to provide students with a friendly contact while in Australia and to broaden their cultural experiences while studying at this university.

The participants are linked with one or two international students and encouraged to meet them two or three times during the session.

Typically, this would be to invite the student for a home-cooked meal, or some other simple activity such as a picnic, shopping or game of tennis.

Neither elaborate entertainment nor provision of board is required.



HSC students enjoyed the 'state-of-the-art' facilities in the Hope Theatre

HSC economics enrichment day popular

An HSC Economics lecture day was held on 13 June at the University.

The day was jointly run with the Department of Economics, University of Wollongong, and the Economics and Business Teachers Association (Illawarra).

There were approximately 300 students attending from different schools in the Illawarra, and 20 high school teachers.

Speakers included:

- President EBTA, Paul Delaney;
- HSIE Consultant, NSW Board of Studies, Bronwyn Hession;
- Director, Economic Literacy Centre, Tim Riley;
- Interim Dean, Faculty of Commerce, Rob Castle;
- School of Health Sciences Management, UNSW, Kevin Forde.

If you would like to participate, or are interested in further information, contact Denise Hull on 213 173, or call into her office which is located in the Counselling Service, third floor, Union Building.

Whose responsibility will health care become?

The Illawarra Area Health Service, in conjunction with the University, the Department of Philosophy and the Medical Innovation Society Law Policy Research Group held an ethics forum and workshop on the 17 June to look at the ethical considerations of hospital-based care compared to home-based care and whose responsibility it will become in the future.

Speakers included senior lecturer in Sociology, Rebecca Albury; member of the Economics Department and

President of the Australian Health Economics Society, Don Lewis; Associate Dean in the Faculty of Law, Colin Thomson; and lecturer in Philosophy, Susan Dodds.

New accommodation services

The Accommodation Office (located on the ground floor Building 11) offers the following services:

- Printouts of share accommodation and rental properties.
- Copies of *Rental Properties from Real Estate Agents* (updated weekly).
- Free use of a phone for students to call agents and owners regarding rental properties.

Copies of the local *Realtor* are available for staff/students seeking to buy properties. Inquiries: Michelle Carden, phone 213 216.

The June meeting of the University Council traditionally receives the annual reports of the University, the University Union (and Child care Centre), the Recreation and Sports Association, and the Friends.

Other business before Council included:

- The Research Management Plan was endorsed as an up-to-date statement of the University's research strategy. The Graduate Faculty was retitled the University Research Committee; the Thesis Committee now has one representative from each Faculty; and the current Research Committee becomes the Executive Committee. Contact: Aapo Skorulis (ext 3386).
- The recommendations of and the Academic Senate action on the Reviews of the Department of Philosophy and the School of Journalism were noted. As an outcome of the latter review, arrangements are being made for the transfer of the School of Journalism from the Faculty of Arts to the Faculty of Creative Arts.
- The Procedures for Course Concept Statements were revised and strengthened to require clear statements of resources involved especially Library, Education Media Services and ITS. Contact: Donna West, Sec, UEC.
- The policy for Non-Discriminatory Language and Practice was approved. The policy will be circulated and available on the Public Information Server. Contact EEO Office (ext 3917).
- The Department of Accountancy was retitled the Department of Accounting and Finance.
- A committee was established to review the student discipline procedures at the Halls of Residence. The Committee consists of the Deputy Chancellor (as Chair), the President of the SRC or her nominee, and the Vice-Principal (Administration) or his nominee.
- The Procedures for the Re-appointment of Deans were amended. Contact: Mr Chris Grange (ext 3929).
- The recommendations of a review of the Professorial Superannuation Fund were accepted. Contact: Mary Youssif (ext 3931)
- Council agreed to convey to the President of the NSW Legislative Assembly the concern of a meeting of students about the appointment of the Rev. Fred Nile to the Council.

How fragile are our coral reef ecosystems?

Australian Flora and Fauna Research Centre Coordinator, Associate Professor David Ayre, and his assistant, Ms Rachel Standish, are using genetic techniques to investigate aspects of the fragility of coral reefs.

This work is carried out in collaboration with Dr Terry Hughes of James Cook University with support from ARC large grants.

In particular, they are trying to determine how genetically similar are samples taken from populations on the same and different reefs.

In theory, the degree of genetic similarity exhibited by different samples should reflect the strength of larval connections (gene flow) between them.

High levels of gene flow are expected to swamp the effects of site-specific natural selection or genetic drift and so pairs of strongly interconnected populations should have very similar genetic compositions.

The genetic data implies that individual reefs exist as effectively closed or isolated populations

They are applying this technique to study several of the species of corals with a range of life-histories.

Corals display two common modes of sexual reproduction.

One group, 'the brooders', have internal fertilisation and give 'birth' to large, free-swimming larvae.

These larvae have relatively large energy stores and have been thought capable of travelling long distances on ocean currents.

The second group produces many small larvae through the

ENVIRONMENT
RESEARCH
INSTITUTE

ERI

now-famous 'mass spawning'. The mass spawners reproduce once per year with colonies shedding eggs and sperm into the ocean.

Associate Professor Ayre has recently published the first phase of this study in the journal *Evolution*.

This work concentrated on reefs separated by no more than 90km (near Townsville) and showed that populations of one of the most common brooding species, *Seriatopora hystrix*, are as highly differentiated as those of any marine organism.

Indeed, the genetic data implies that individual reefs exist as effectively closed or isolated populations.

This would mean that this species will be particularly susceptible to environmental catastrophes that severely damage an individual reef.

Associate Professor Ayre and Ms Standish are extending the work to larger spatial scales.

They have sampled reefs off Lizard Island, Townsville, Heron Island and Lord Howe Island and are including comparisons with mass spawners and others that are particularly likely to reproduce asexually through fragmentation of adult colonies.

Preliminary findings suggest that some of the mass spawning and some of the brooding species have strong larval connections along the length of Great Barrier Reef.

OZCHI '95 at Wollongong University

OZCHI (Australian Computer-Human Interaction) is the annual national conference devoted to the interchange of work and ideas between researchers and practitioners in the area of human-computer interaction.

The 1995 conference will be held at the University of Wollongong in November.

The Department of Business Systems is coordinating the conference, which will bring together researchers and practitioners involved in the theory, development, deployment and analysis of interactive, computer-based systems.

OZCHI attracts participants from many backgrounds, including psychology, human-computer interaction, software engineering, design, social science and management.

This year's conference will include keynote and plenary sessions featuring invited speakers of international repute, high-quality papers from industry and academia; professional workshops and an active social program.

Areas of human-computer interaction, include:

- human factors and ergonomics;
- interfaces for users with special needs;
- user interface development methods and practice;
- user interface management systems;
- evaluation/usability testing;
- groupwork/CSCW;
- models of the user;
- multimedia/hypermedia;
- virtual reality systems;
- organisational and societal issues;

- executive information systems;
- teaching Human-Computer Interaction (HCI)

This year's OZCHI '95 plans to make use of the latest in technology to enhance the communication between HCI practitioners throughout the world.

This includes a panel discussion across the Pacific using video conferencing facilities, and the production of a CD-ROM proceedings to capture events as they happen during the conference.

Invited speakers include:

- Professor of Computer Science and Psychology at Virginia Tech, Jack Carroll;

- Victor Kaptelin, formerly of the Moscow State University and the Psychological Institute of Moscow, now a senior researcher at Umea University, Sweden;

- Executive Director of LUTCHI Research Centre and Professor of Computer Studies at Loughborough University of Technology, Ernest Edmonds.

Sponsorship opportunities for OZCHI'95

OZCHI'95 attracts a unique blend of participants from industry – both public and private sectors – as well as academia and is about people working with computers.

The people attending OZCHI are concerned with designing usable systems.

Their aim is to build effective computer software effective for people, effective use of technology, effective for the business at large.

This conference provides an opportunity to maintain an association with

leaders in the software industry, those involved at the leading edge of software design from both Australia and overseas.

Growing steadily since it was first held in Sydney in 1991, OZCHI'95 expects at least 200 delegates.

Usability issues will be addressed in fields including multimedia, executive information systems (EIS), graphical user interfaces (GUIs), usability testing and computer-supported cooperative work (CSCW).

All these issues are about streamlining the interface between people and their computer tools, and making them more productive.

Sponsors are invited to contribute to general sponsorship or to support a special event.

All sponsors are invited to place marketing materials in the conference bag and will have their logo on the registration form, the conference programs and in the conference proceedings.

The level of general sponsorship may be increased to allow free registration of one or more members of the sponsoring organisation and to have their logo displayed on the conference bag.

Anyone interested in becoming involved in sponsorship of this event should contact the committee.

Participation in OZCHI'95

Original papers, demonstrations, workshops, tutorials and posters are invited in all areas of Human-Computer Interaction.

Important dates are:

Full papers, tutorials and workshops: Draft, formatted version must be received by 10 July. Feedback to authors will be released by 16 September.

Posters, short papers, demonstration and interactive experience: Draft, formatted version must be received by 1 August. Feedback to authors will be released by 16 September.

Preliminary tutorial and workshop proposals include:

- Multi-media design and use;
- Design interactive systems;
- Executives and IT (EIS);
- Innovations in teaching HCI;
- Gender issues in the use of IT.

Inquiries: Helen Hasan, OZCHI'95 Conference Chair, Department of Business Systems, The University of Wollongong, Northfields Ave, Wollongong 2522. Phone (042) 213 757 or 213 958. Fax (042) 214 474.

University Singers' French collection

Profits will be donated to Greenpeace

The University Singers' next concert, on 28 June at Wollongong City Gallery at 8pm, will comprise works by French composers.

Some of the composers are well known (Josquin, Debussy, Ravel), some not (Mouton, Costeley, Passereau).

None of the pieces deal with religious subjects, but address secular matters such as flea infestations, wife-beating, a gold-digging Little Red Riding Hood, matrimonial fidelity (or the absence of it), the seasons, thwarted love, nasties in the woods, lack of money, birds (the feathered variety), and shepherdesses who are no better than they should be.

David Vance has ranged widely in selecting more than 30 songs from the 16th to the 20th centuries, to compile a program abounding in Gallic wit and tunefulness.

Admission is \$10 and \$6, with children under 12 admitted free.

Leading Applied Statistician visits Wollongong

Leading statistical researcher, Professor Bryan Manly, from the University of Otago, New Zealand, visited the Department of Applied Statistics from 15-21 June.

Professor Manly, who was awarded a DSc from City University, London, was chosen as a 'Distinguished Statistical Ecologist' at the 1995 International Congress of Ecology, and elected a Fellow of the Royal Society of New Zealand this year.

He is also the Editor of the Chapman and Hall Series on Population and Community Biology, and an Associate Editor of the Journal of Agricultural, Biological and Environmental Statistics.

Professor Manly has broad research interests, including quality control and sequential testing, mark-recapture sampling, the construction and analysis of animal life tables, detecting and measuring natural selection, generalised linear models, and the statistics of earth sciences, education, psychology, anthropology and archaeology.

His books include *The Statistics of Natural Selection on Animal*



Interim Dean of the Faculty of Informatics, Professor David Griffith (left), and Mr John Raynor from the Department of Applied Statistics (right) at the departmental research planning meeting with visitor Professor Bryan Manly.

Populations; Multivariate Statistical Methods - A Primer; Multistage Populations: Sampling, Analysis and Simulation; Randomisation and Monte Carlo Methods in Biology; and The Design and Analysis of Research Studies.

He is working with colleagues on another book on resource selection by animals.

During his visit, Professor Manly attended the Department's Research Plan-

ning Day, and gave a talk of interest to biologists, statisticians, biometricians, and mathematicians, entitled *Three Tales of Statistics in Ecology: Lizards on Tropical Islands, Polar Bears in the Arctic, and Birds in Canada.*

In this talk Professor Manly said that in the last year, three problems in ecology have interested him. They demonstrate the wide range of statistical problems still waiting to be solved in the area.

Problem number one concerns the answer to the question: does the distribution (presences and absences) of lizard species on 25 islands in the Gulf of California indicate any interactions between species?' he said.

'My answer here is an interesting application of generalised Monte Carlo tests.

'This gives very strong evidence of a non-random pattern of co-occurrences.

Problem number two arose from an ongoing study of polar bear movement in the Bering and Chukchi Seas by biologists working for the US National Biological Service in Alaska.

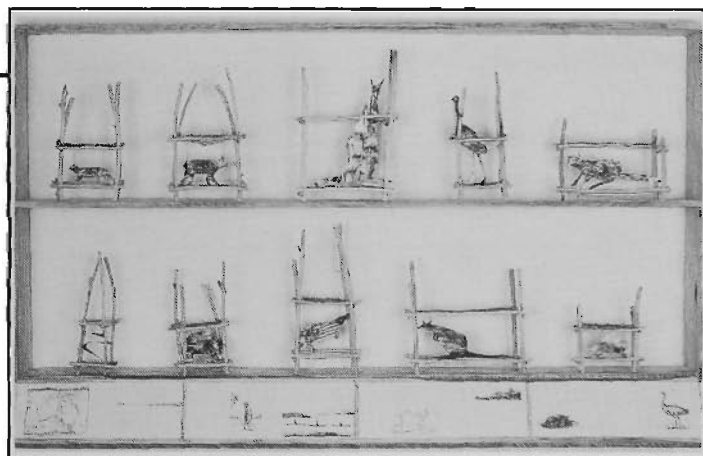
'The question is: how do you assess habitat selection by the bears when the habitat (ice and water) is changing constantly?

'Standard maximum likelihood methods save the day here.

Problem number three arose because one of the world's most famous ecologists has claimed that there are gaps in the distribution of the animal body masses that are related to alternative modes of living.

Here the question is: how do we decide that a distribution has n gaps in it?

'My answer is in terms of kernel estimation of density functions with a bootstrap method for testing whether there are n gaps against the alternative that there are $n - 1$ 'gaps'.'



A work by lecturer in the Faculty of Creative Arts, Liz Jeneid, called Terra Australis

Sue Rowley crossing borders

Senior lecturer in the Faculty of Creative Arts, Dr Sue Rowley, leaves the University at the end of this month to take up an appointment as Professor of Contemporary Australian Art History at the University of NSW College of Fine Arts.

She will retain friendly relationships with Wollongong and hopes to establish some joint ventures.

Dr Rowley has seen one of her major projects come to fruition this month with the start of a national tour in America of an exhibition that she curated in association with Associate Dean for Academic Affairs, Kansas City Art Institute, Christopher Leitch, called *Crossing Borders: Contemporary Australian Textile Art*.

In the introduction to the catalogue for this exhibition, the Director of Exhibits USA, Mary Kennedy McCabe, said: 'This exhibition provides American viewers with insights into many fascinating aspects of Australian culture and brings together a beautiful array of textiles created by 25 outstanding Australian artists.'

Works by several Wollongong and Faculty of Creative Arts artists are included in the exhibition.

General

The Campus Alumni Bookshop will open on the second and fourth week-ends of each month. Come and browse through a wide selection of preloved textbooks and fiction. Campus East, Cowper Street, Fairy Meadow (opposite Science Centre). All proceeds directed towards campus projects. Donations of material are invited. Enquiries to Alumni Office, phone 213 249 or 291 951.

Long Gallery

Exhibition program for 1995:

29 June-30 July: NAIDOC Exhibition – Works by Aboriginal artists.

3-27 August: Artist Made Furniture.

1-24 September: Postgraduate Works – Eileen Dillon Smith, Marcie McConville, Enis Tan, Taskin Gencag, Hue Lin Zhu, Alan Spackman.

2 October-5 November: Arch-aeologies:

What's On

Structures of Time – Diana Wood Conroy and Sharon Marcus.
Reciphering – Katharine Nix. Pathways – Paper works by Ian Arcus.
13 November-10 December: BCA Graduating Exhibition.

Union Activities

All members of the Union, students and staff are invited to attend.

27 July: Band Competition Final.

7 August: Union Art Award.

4-8 September: Union Week.

9 September: Union Dinner.

Cell and Molecular Evening Seminar Series

Conducted by the Department of Bio-

logical Sciences and Biological Macromolecules Research Centre.

7 August: Professor Rolland Skollay (Centenary Institute), The Life Technologies seminar on T cell immunology.

14 August: Dr Simon Easterbrook Smith (University of Sydney), The BioRad seminar on complement regulation.

11 September: Professor Adrian Gibbs (Australian National University), The Bresatec seminar on virus evolution.

Held on Mondays from 6pm in the Department of Biological Sciences, University of Wollongong, Building 35, Room 105.

Inquiries, phone: (042) 213 013, fax: (042) 214 135.

Stop Press

Campus News is published weekly on Wednesdays. Send material, preferably by Microsoft Mail or on disk, to E-Mail account 'Campus News' by noon on Monday of the week before that of publication.

For any other enquiries contact the Editor, Gillian Curtis (042) 21 3926. Campus News has a circulation of 3000. It is distributed on campus to staff and students. 1000 are mailed to the community and overseas including schools in Illawarra, southern Sydney and Canberra; local, Sydney and Canberra media; Friends of the University; business representatives; MPs and numerous individual requests.

PAID ADVERTISEMENT

Keiraville's Finest

FOR SALE



IMPROVE
YOUR
LIFESTYLE

57 ROBSONS ROAD, KEIRAVILLE

Built for a lifetime, using only the best materials available today, these superior quality townhouses have set a new standard in design and lifestyle.

- ☑ Huge 3-bedroom layout, plus en-suites.
- ☑ Superior "Thermocell" construction, polyurathane or solid timber kitchens.
- ☑ Solar-passive design.
- ☑ Big double garages

- ☑ Two with rumpus-rooms.
- ☑ Auto panel-lift doors.
- ☑ Security intercom.
- ☑ Light, bright & airy interiors.
- ☑ Large private courtyards.

- ☑ Terracotta tiled balconies.
- ☑ 2.7m (9') ceilings.
- ☑ outstanding views over city to ocean.
- ☑ Spacious, sunny open-plan design.
- ☑ Floor to ceiling conservatory windows.



Your partners in property

29 5555

**299 CROWN STREET,
WOLLONGONG**

INSPECTIONS
Also available by
appointment.