

1-1-2012

## "Start of spring: east wind melts ice"

Jo Law

*University of Wollongong*, [jol@uow.edu.au](mailto:jol@uow.edu.au)

Follow this and additional works at: <https://ro.uow.edu.au/creartspapers>



Part of the [Arts and Humanities Commons](#), and the [Social and Behavioral Sciences Commons](#)

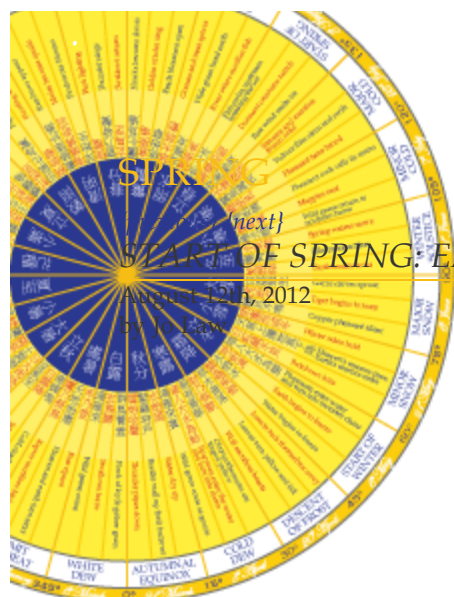
---

### Recommended Citation

Law, Jo: "Start of spring: east wind melts ice" 2012.  
<https://ro.uow.edu.au/creartspapers/461>

Research Online is the open access institutional repository for the University of Wollongong. For further information contact the UOW Library: [research-pubs@uow.edu.au](mailto:research-pubs@uow.edu.au)

# THE ILLAWARRA AND BEYOND



## {ABOUT THE PROJECT}

[about The Illustrated Almanac](#)  
[Reading the Almanac](#)  
[Contributor's User Manual](#)  
[Contact](#)

## {OBSERVATIONS}

[Autumn](#)  
[Beyond](#)

[Austinmer 34°18'S 150°56'E](#)  
[Canberra 35°18'S 149°07'E](#)  
[Coalcliff 34°14'S 150°58'E](#)  
[Coledale 34°17'S 150°57'E](#)  
[Mount Kiera 34°24'S 150°51'E](#)  
[North Wollongong 34°25'S 150°53'E](#)  
[Nowra 34° 53' S 150° 36' E](#)  
[Riversdale 36°01'S 149°12'E](#)  
[Shoalhaven River 34°52'S 150°44'E](#)  
[Taree 31°54'S 152°27'E / 31.9°S](#)  
[Wollongong 34°25'S 150°52'E](#)

[Snippets](#)  
[Spring](#)  
[Summer](#)  
[Winter](#)

## {CALENDAR}

December 2012

MTWTFSS

Yes, it is spring, according to the Chinese Almanac. The almanac uses astronomical calculations to reckon the seasons, where four positions of the sun on the ecliptic serve as reference points. These quarter points, as they are known, are the solstices and equinoxes. On the solstices, the sun observed from Earth to be directly overhead at the tropics (of Capricorn 23° 26' 16"S or Cancer 23° 26' 16"N). At these points, the sun 'stands still', it will go no further but instead 'reverses' direction. Allowing for a delay in the heating and cooling of earth's air temperature (known as 'season lag'), the almanac places the start of seasons at the mid-points between solstices and equinoxes

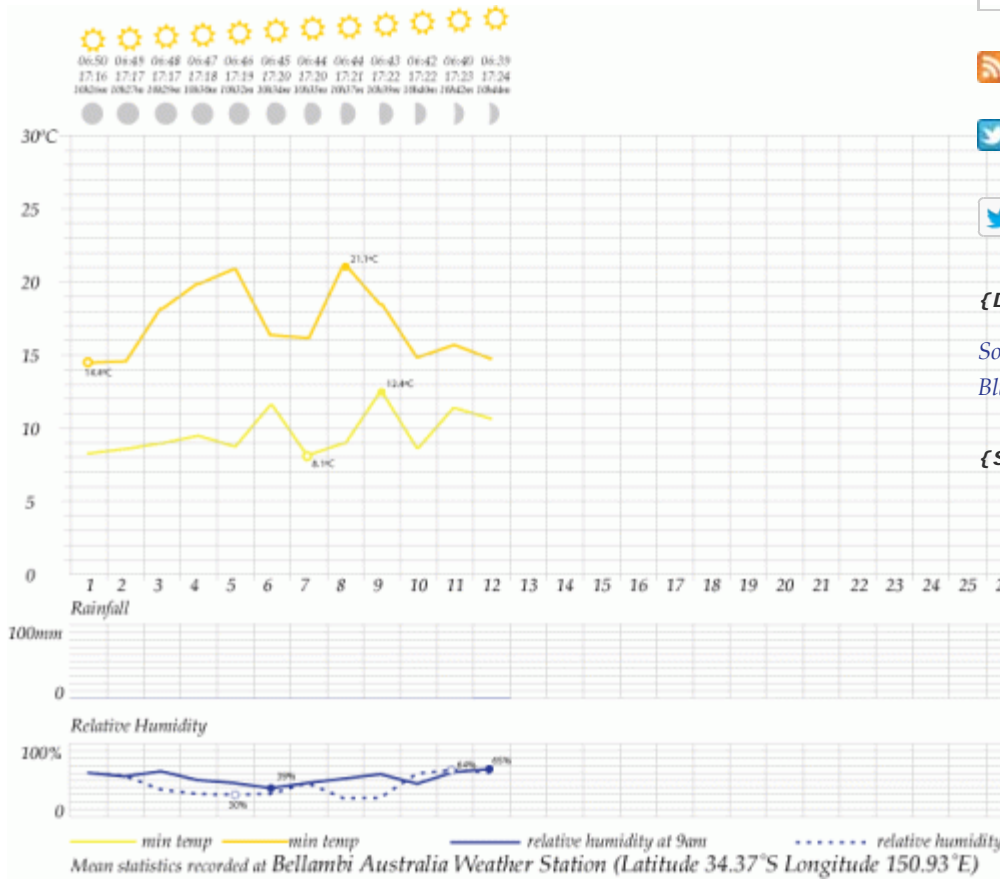
With the solstices and equinoxes marking the middle of the seasons, the experience of each period becomes more transitory. In comparison with the method of using meteorological data as determinants for seasons (for example, designating the coldest three months as winter and hottest three months as summer), astronomical reckoning is more anticipatory than definitive when considering 'seasonal weather'. In the latter, a spring day can be a cold day (and frequently is).

In this pentad when 'east wind melts the ice' strong gusty wind swept from the south reminding us that the seasonal 'August wind' will once again return. Soon the sun will pass the same point on the ecliptic when the Illustrated Almanac began. Or more accurately, at the close of this project we would have made a complete revolution around our star having

[subscribe for email updates](#)  
 Enter your email address:

travelled some 940 million km from our starting point.

Delivered by *FeedBurner*



[Subscribe in a reader](#)

[Follow @illusAlmanac](#)

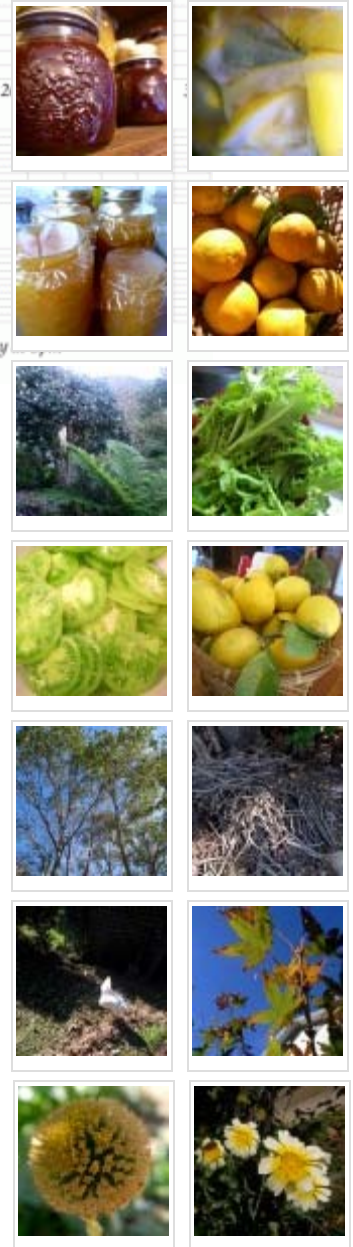
[Tweet](#)

{**DOWNLOAD**}

[Solar Terms Calendar](#)

[Blank Calendar Wheel](#)

{**SNIPPETS**}



[No Comments »](#)  
[\[previous\]](#) [\[next\]](#)

LEAVE A REPLY

Name (required)

E-Mail (required)

Website

{**NOTABLE COMMENTARIES**}

*IllusAlmanac* Illustrated

Powered by *Wordpress XHTML Strict*



Almanac

2:39 PM Jan 12, 2012

@girlnagun Meanwhile,

fan-mania continues here whether hot or cold/ Faa!! Faa!! chirps the small one.



*IllusAlmanac* Illustrated Almanac

4:46 PM Dec 20, 2011

@girlnagun Yellow-tailed,

Red-tailed, may I ask? Just the sulphur-crested vandals here ripping off upripe passionfruits!



*IllusAlmanac* Illustrated Almanac

1:49 PM Nov 15, 2011

@girlnagun A cicada shell

on a mulberry leaf: where are the cicadas? Then we heard a song that night <http://t.co/z2WRL0qP>



*HollisBridgeman* Hollis Bridgeman Law

2:48 PM Nov 13, 2011

@IllusAlmanac: more...?

Lzzzzz....d....Zzzzzz...

<http://t.co/UMv7syaG>