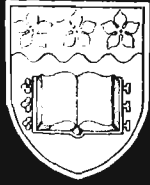


THE UNIVERSITY OF WOLLONGONG

CAMPUS NEWS



Distributed each Tuesday

Deadline for copy noon Monday
of previous week

Editor: George Wilson, Tel. (042) 27 0926
(042) 28 6691

12 September 1989

Director of Statistical Consulting

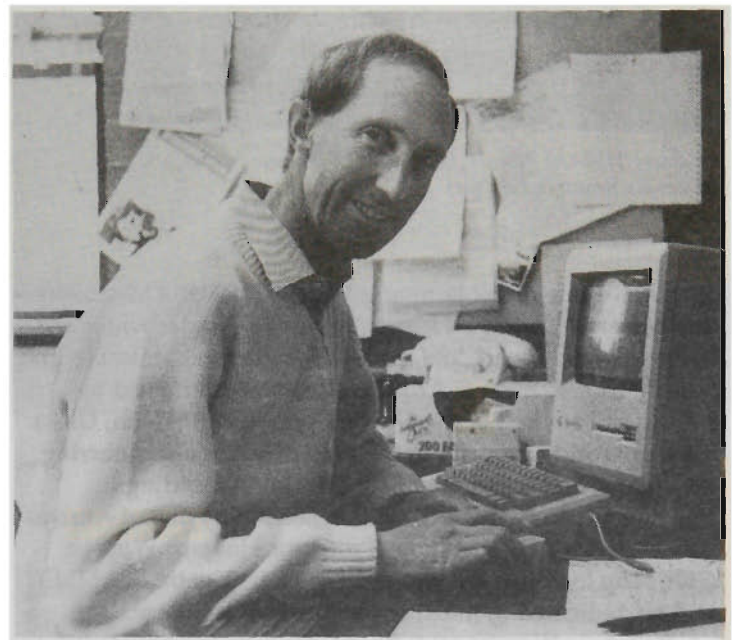
Dr Ken Russell takes up his appointment

Dr Ken Russell took up the position of Director of Statistical Consulting within the Mathematics Department at the end of July. He took over from Dr Ross Sparks, who acted as Director for the first seven months of 1989. In Session 1 projects were undertaken for researchers from all faculties of the university and members of the Mathematics Department provided assistance with a wide range of statistical and mathematical problems.

The consulting service is available to all staff of the university and to research students; students must be accompanied by their supervisors on their first consultations.

The service is free for staff and students working on investigations not receiving external funding. Investigators with such funding are normally expected to have included provision for statistical assistance in their funding submissions and will be charged for statistical services. Commercial rates will be charged to clients outside the university.

Further information about the consulting service will appear in a more detailed article in a future issue of *Campus News*. Near the middle of Session 2 a general information lecture on the consulting service, open to all members of the university, will be given, while more specific subject-orientated lectures will be offered to individual departments in due course. In the meantime, persons seeking advice on any research problem involving statistical or mathematical applications should contact Ken Russell on extension 3815.



Dr Ken Russell

People consulting another member of the Mathematics Department at present should continue to see that person in relation to the current project but should contact Ken Russell about new projects.

Hong Kong Group studies Dawkins reforms

The University and Polytechnic Grants Committee of Hong Kong (UPGC) is meeting in Australia to investigate the recent changes in higher education. The UPGC, which is the funding arm of tertiary institutions in Hong Kong, meets three times a year, twice in Hong Kong and this year its third meeting is being held in Australia.

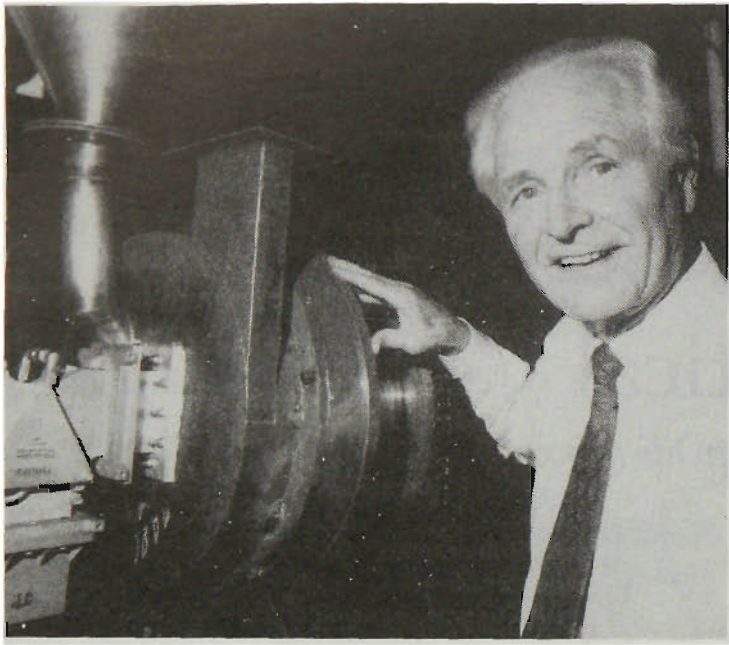
After its visits to the University of Technology, Sydney, and The University of New South Wales, the 18-member committee visited The University of Wollongong on August 29 and in the next two weeks will visit the Bathurst campus of Charles Sturt University, the Australian National University and the National Board of Employment, Education and Training in Canberra before moving to the Royal Melbourne Institute of Technology and Ballarat College at the end of its tour.

Mr Leonard Spark, Secretary of the UPGC, said that Hong Kong was facing change similar to that in Australia and, being in a cash-limited situation, was interested in taking a more entrepreneurial stance and look at alternative means of funding tertiary education other than through the public purse.

The Art of Lunch
Every Thursday from
12.35 to 1.25 pm

General Notices

New Centre for Research



Professor Howard Worner, CBE, head of the new Microwave and Materials Research Institute

The University of Wollongong has established a Microwave and Materials Research Institute (MMRI), under which the University has created a Centre for Advanced Materials and Surface Engineering (CAMSE). Both were launched by Professor Tom Bell of the University of Birmingham, UK, a leading world authority in the field of surface engineering, on Wednesday September 6, in the Union Building. The new institute (MMRI) will be headed by one of Australia's most eminent scientists, Professor Howard Worner, CBE. The Institute (MMRI) and the new Centre (CAMSE) will be dedicated to meeting the needs of industry.

Professor Worner said: 'In establishing the new Institute and Centre, The University of Wollongong will be taking a lead in Australia in the comparatively new area of surface engineering. We will be undertaking prototype component treatment using advanced techniques, technology transfer to industry and will be investigating the fundamental aspects. It will result in great benefits to Australian industry.'

Successful Conference on Women and the Future

A vigorous debate on the issues surrounding the education of girls and technology was evident at a conference organised by the Gender and Education Unit, School of Learning Studies.

The Conference was opened by the Vice-Chancellor, Professor Ken McKinnon, who was Chairman of the Girls, School and Society Report in 1975. In his opening address Professor McKinnon made the point that relevance was still found today in that particular report, which also had Jean Blackburn and Susan Ryan as Committee members.

The keynote speaker was Dr Susan Holland, Assistant Director, Studies Directorate, NSW Department of Education. Dr Holland presented an outline of the department's Girls' Education Strategy for 1989. Ms Julie Horlick, Senior Policy Adviser to the Minister of Education, and Ms Jenny

Cameron, Director, Special Programs, TAFE, sketched in the political background to the implementation of the new policy. In essence their arguments suggested that education was now under closer scrutiny by governments and opportunities for women had to be vigorously pursued.

Ms Helen McGregor, Womens Officer, NSW Teachers Federation, argued that such opportunities will dwindle drastically if 'mainstreaming' led to the closing down of special programs for women. She identified many barriers to girls achievement in a technologically orientated education system, such as school staffing, that located men only in these fields, the methods of teaching which alienated or marginalised girls, timetabling, and biased allocation of resources.

Mr Ian Mclean, Equal Opportunity Co-ordinator at BHP Steel Slab and Plate Products Division, outlined the significant advances being made in that industry towards more equity toward women in the workplace.

Local research into non-traditional study for women at The University of Wollongong and high achieving girls in maths and science, was presented by Dr Noeline Kyle, Professor Ron King, Ms Jan Wright, Ms Jan James and Dr Jenny Jones.

The conference attracted considerable interest from local teachers, career advisers, principals, regional co-ordinators, students and researchers.

Support for Equity in Education Program

BHP Steel Slab and Plate Products Division are supporting the Equity in Education Program as part of their Equal Employment Opportunity strategy for women workers. Their support is specifically aimed at a project co-ordinated by Dr Noeline Kyle to encourage young women into non-traditional employment, training and higher education in the Illawarra. DEET has already provided funding for this project and the BHP support will provide the extra funds to extend the project into TAFE and industry.

As part of their support, BHP have provided \$5,000 toward the production of a glossy pamphlet which highlights the theme of *Women Breaking with Tradition*. The idea for the pamphlet arose when Dr Kyle and her associates attended careers markets to find that no brochures were specifically targeting Illawarra students in this important field.

The remaining \$10,000 provided by BHP Steel Slab and Plate Products Division will provide support for additional research assistance to extend the project and provide a substantial report and recommendations that will be useful in the Illawarra region. This is an action research project that aims to provide policy recommendations to industry, the school sector and careers advisors. The project team is working closely with careers advisors, regional office of the NSW Department of Education, the EEO Unit at BHP Steel Slab and Plate Products Division and local industry.

Distinguished Visitor

Associate Professor Rehana Ghadially, Department of Humanities and Social Sciences, Indian Institute of Technology, is a Visiting Fellow to the School of Learning Studies. She will be working on research funded under the Equity in Education Program co-ordinated by Dr Noeline Kyle. In particular she will be contributing to the major project under that program *Encouraging Women to Enter*

continues opposite



National Aborigines and Islander Week

Our culture is our strength

Staff and students of The University of Wollongong Aboriginal Education Unit have begun celebrating National Aborigines and Islander Week. The celebrations began yesterday (September 11) and continue to Friday September 15.

The theme this year is *Our culture is our strength*. At 10.30 am yesterday the Pro Vice-Chancellor, Professor Lachlan Chipman, opened the 'week' at the traditional Aboriginal flag-raising ceremony. The location was the

University flagpole at the main entrance.

Other activities this week will include exhibitions, performances, talks and a visit by 90 Aboriginal year 11 and 12 students from south-coast schools. Further details on this from Carol Speechley at the Aboriginal Education Unit on ext. 3776.

Aboriginal Week is of great importance for Aboriginal and Torres Strait Islander Australians. Celebrations provide the opportunity for staff and students to meet and talk with members of south-coast Aboriginal communities.

All members of the University staff and students are invited to join in.

Non-traditional Study at the University. She will also be pursuing her research into Muslim Women and Modern Education.

Assoc. Prof. Ghadially has published widely in the field of psychology, women's studies and the status of women in India. Her most recent publication is an edited book which looks at women in India, stereotyping, violence, media and the emergence of feminism, *Women in Indian Society: A Reader*, Sage Publications, New Delhi, 1988.

Assoc. Prof. Ghadially will participate in the School of Learning Studies seminar program in session 2. She will present a seminar entitled *Muslim Women and Modern Education* at 12.30 pm on Wednesday September 20 in 21.104. All welcome enquiries to Dr Noeline Kyle, ext. 3374.

Informal talk and supper

All members of the University Club are invited to an informal talk and supper at the Club Room on Friday September 15 at 7.30 pm. Professor Helen Garnett will speak on *The experience of working in a South African University*. Cost: members \$5, non-members accompanying a member \$7.

Further information from the club president (A. Prof. Ross Lilley, ext. 3431) or the acting secretary (Maree Fryer, ext. 3365)

Departmental secretaries

Please return 'course adviser' badges used on Open Day to Gillian Curtis, Planning and Marketing Branch.

Union Board of Management

Annual Elections 1989 – Declaration of the Poll

In the elections held on Wednesday and Thursday, August 16 and 17, to elect five people from the membership of the Union, votes were cast as follow

Candidate	First Preference Votes
Licardy, Monique Danielle	246
Rasiah Thambipillai, Joel	179
Bellgard, Stanley Edward	149
Soper, Allan Clive	124
Catt, Suzanne	88
Boyd, Christopher John	21
Hafey, Alex	9
Formal votes cast	816
Informal votes	60
Total votes cast	876

Ms Monique Danielle Licardy, Mr Joel Rasiah Thambipillai and Mr Stanley Edward Bellgard exceeded the quota of 137 votes at the first count.

Mr Allan Clive Soper exceeded the quota following the distribution of preferences from Ms Monique Danielle Licardy.

Ms Suzanne Catt exceeded the quota following the distribution of preferences from Mr Joel Rasiah Thambipillai.

I declare the following candidates elected in accordance with clause 6.1(b) of the Constitution of the Union, to serve for a period of two years from the first Board Meeting in September 1989:

Ms Monique Danielle Licardy
Mr Joel Rasiah Thambipillai
Mr Stanley Edward Bellgard
Mr Allan Clive Soper
Ms Suzanne Catt

Noel Diffey, Returning Officer

Grants to Research Programs

The Federation of Australian University Staff Associations (FAUSA) has a Research Committee which advises FAUSA on issues such as university research management plans, the operation of the Australian Research Council (ARC), performance indicators for research, and university research profiles. Recently, the FAUSA Research Committee used this advice in a meeting in Canberra with members of the ARC and the Department of Employment, Education and Training (DEET).

I am the local contact for the FAUSA Research Committee. At a meeting of NSW contacts in July one point stood out: The University of Wollongong's research management plan, involving grants to research programs, seems to be closer to the Dawkins/DEET model than anywhere else.

I welcome comments and suggestions from any member of the university community regarding the above issues.

Brian Martin
Science and Technology Studies Department

Research Publications

Recognition of the work being done in sports science research by members of the Department of Human Movement is being accorded through publication in international professional literature of their work:

JOURNAL ARTICLES

Anshel, M, *The Effect of Positive and Negative Feedback on Casual Attributions and Motor Performance as a Function of Gender and Athletic Participation*, June 1989 issue of the 'Journal of Sports Behaviour'.

Milburn, P D, *The Kinetics of Various Rugby Union Scrumming Techniques*. In Gregor, R J, Zernicke, R F and Whiting, W C (eds). 'Proceedings of XII International Congress of Biomechanics', Los Angeles: University of California, Los Angeles, 1989.

Milburn, P D, *Mechanics of a Rugby League Scrum*. In Morrison, W E (ed) 'Proceedings of VII International Symposium of the Society of Biomechanics in Sports, 1989, 61-72.

Steele, J R and Milburn, P E, *A Kinetic Analysis of Footfall Patterns at Landing During Netball*, *The Australian Journal of Science and Medicine in Sport*, 1989, 21 (1), pp 10-13.

PRESENTATIONS

Anshel, M, At the International Society for Sports Psychology Conference entitled *Towards Validation of the COPE Model: Cognitive Strategies for Coping with Acute Stress in Sport*, Singapore, August 7-12.

Steele, J R and Lafortune, M A, *The Relationship between Technique and Ground Reaction Forces at Landing in Netball*, XII International Congress of Biomechanics, Los Angeles, California, June-July 1989.

Steele, J R and Lafortune, M A, *A Kinetic Analysis of Footfall Patterns at Landing in Netball: a Follow-up Study*, VII International Symposium of Biomechanics in Sports, Melbourne, July 1989.

Steele, J R, *Biomechanics of Netball*, New South Wales Netball Association, National Accreditation Scheme, (Level II), Sutherland, July 1989.

ACCEPTED FOR PRESENTATION

Hazards of Sailboarding: A Survey of the Injury History of Windsurfer National Class Competitors, 26th ASMF National Conference, Tasmania, October 1989.

Injuries and the Veteran Netball Player: Minimizing the Risks, 1990 Commonwealth and International Conference on Physical Education, Sport, Health, Dance, Recreation and Leisure, Auckland, January 1990.

Senate Standing Committee

Inquiry into priorities for reform in higher education. Public hearings on September 14 will be held in the Council room, Chancellery Building, University of New South Wales from 9 am to 5 pm. The meeting is open and academics and students are welcome to attend.

The Senate Standing Committee on Employment, Education and Training is one of the eight legislative and general-purpose committees of the Australian Senate appointed to inquire into and report on matters referred to them by members of the Senate. Its inquiry into the priorities for reform in higher education was wide-ranging and its interests included the matters covered in the Government's Green Paper and White Paper on higher education; submissions were welcomed on other aspects of higher education.

ETHICAL CLEARANCE FOR RESEARCH INVOLVING HUMAN SUBJECTS

The collection of data from planned experimentation on human beings is necessary for the improvement of human health. Experiments range from those undertaken as a part of patient care to those undertaken either on patients or on healthy subjects for the purpose of contributing to knowledge and include investigations on human behaviour.

It is the responsibility of the individual researchers to ensure that, where necessary, clearances are obtained from the committee.

Recently the committee has noted that some researchers are embarking on their research before clearance has been granted.

Investigators have ethical and legal responsibilities toward their subjects and the University has an obligation to ensure that all research carried out on campus conforms to the ethics requirements of the National Health and Medical Research Council.

Any research involving human subjects, even that which is not medical or health related, must receive ethical clearance.

Researchers and supervisors of honours and research students should note the following meeting dates of the committee and ensure that all applications are submitted in advance of projects being started.

Human Experimentation Ethics Committee meeting dates for 1989

September 26

November 14

Agenda deadline for these meetings is two weeks before the meeting date. The first meeting of the Committee for 1990 will not be until February and projects wanting to begin before to this date must be submitted by November 1.

Professor J. L. C. Chipman
(Pro Vice-Chancellor)
Chairperson, Human Experimentation Ethics Committee

Research Funds

The sources of research funds given below are available to members of academic staff. Further information including application forms may be obtained from Kim Roser (ext 3201). Intending applicants are reminded that all research applications must be forwarded through the Office of Research and Postgraduate Studies.

NASA Research Proposals

National Aeronautics and Space Administration solicits proposals in the following programs:

- Astrophysics Data Program
- Origins of Solar Systems Research Program.

Applications close with the University on October 9.

Forestry Research Grants

The Australian Academy of Science has invited applications for the Maxwell Ralph Jacobs Fund to support worthy projects in forestry research and to provide graduates with support not readily available from other sources.

Applications close with the University on October 17.

Earthwatch-Grants for Field Research in Science or Humanities

The Centre for Field Research invites scientists to apply for grants of funds and volunteer labour for use in field research projects.

Applications close with the University any time.

Scholarships, fellowships and awards

CSIRO 1990 Postdoctoral Awards

The Commonwealth Scientific and Research Organisation invites applications from PhD graduates, or those nearing the completion of the requirements for a PhD degree, for Postdoctoral Awards of two years' duration. In the second year of the award the recipient will be required to work on an approved joint research project with CSIRO.

Applications close with the University on September 29.

International Development Program (IDP)

Workshop on Education Aid Projects

This workshop is to address the needs of educational institutions for information on procedures and experience in project management. The workshop will be held in Canberra from September 29 - October 31.

Application forms are available from the office of Research and Postgraduate Studies.

Research Grants 1990

Applications are now invited for The University of Wollongong research grants in the following categories:

	<i>Closing date</i>
Program Grants	September 30
Project Grants (Initials)	October 30
Project Grants (Renewals)	October 30
Small Grants (up to \$500)	October 30

Application forms are available from Kim Roser(3201) in the Office of Research and Postgraduate Studies.

Previously advertised in Campus News

Internal closing date

Health and Community
Services Research Grants

Any time

Japan Society for the Promotion of Science Exchange Program

The Australian Academy of Science invites applications from scientists resident in Australia who wish to participate in an exchange program (for short-term visits or postdoctoral fellowships) with the Japan Society for the Promotion of Science. Proposals in any field of natural science will be considered.

Applications close with the University on September 19.

Canada-Australia Bicentennial Research Award

Applications are invited for a Canada-Australia Bicentennial Research Award. A grant of \$25,000 will be awarded annually for the next five years to an Australian Institution for an original research project focusing on Canada or the Canada-Australia relationship.

Applications close with the University on October 19.

Robert S McNamara Fellowships

The World Bank has invited applications for ten fellowships to be awarded for a 12-month period for full-time work in the general field of economic development. This year's special emphasis will be in the area of Economics of Gender Issues in Development and Economics of Environmental Sustainability.

Applicants are normally 35 years of age or under and have the equivalent of at least a Master's degree. This Fellowship program is not intended to support work leading to an advanced degree and must be carried out in a Bank country other than the candidate's own.

Applications close with the University on October 17.

1990 Fulbright Awards for Seniors

The Australian-American Educational Foundation invites applications for Fulbright Awards for study, research and lecturing in the United States for Postdoctoral Fellows, Postgraduate Students and Senior Academics. Applicants must be Australian citizens and resident in Australia at the time of application. Awards are tenable in the United States from 1 July 1990 to 30 June 1991 and successful applicants will be required to return to Australia at the completion of the program.

Applications close with the University on November 16 for Seniors.

Academy of Science China Exchange Program

The Australian Academy of Science supports a scientific exchange program with the People's Republic of China. Scientists resident in Australia are invited to participate in the program in the 1990/91 financial year. Proposals must focus on visits to Academia Sinica Institutes and should propose a scientific program in any field of natural science which has been developed in consultation with scientists in the institutes they wish to visit.

Applications close with the University on November 17.

Concerts, Exhibitions and Entertainment

SCA diversity in forthcoming exhibition

The latest in the sequence of exhibitions organised by the School of Creative Arts will have its preview on Friday September 15 from 7.30 to 9.15 pm. The exhibition will be open to the public from September 17 to October 8.

Gregor Cullen	Original prints
Ann Ferguson	Original prints
Leonie Molloy	Original prints
Idris Murphy	Paintings/The Ecumbene Lithographs/The Heretic
James Taylor	The Little Parellel Piped/Retrospective/Typographyics/and exhibition of books, works and typography
Simon Tognetti	Ceramics

The exhibition promises to combine diversity with a high level of professionalism. Two of the exhibitors - Idris Murphy and James Taylor - have combined their talents in the superb book production, *The Heretic*, which James Taylor designed and printed and Idris Murphy illustrated. This production was awarded third prize in an international competition.

Idris Murphy has been artist in residence in the NSW Gallery in Sydney. She is a regular exhibitor at the Macquarie Gallery.

Gregor Cullen of Redback Graphic fame shares wall space with two print makers, Ann Ferguson and Leonie Molloy (all accomplished print makers but with markedly different imagery).

Simon Tognetti held his first one-man show in the Long Gallery in 1987. It proved to be phenomenally successful - he sold over 80 per cent of his exhibited works, a record for an SCA exhibition. His recent work includes large decorated porcelain bowls beautifully thrown and decorated. He has studied under Tie Hua - a Chinese Master - and this is evident in much of his recent decoration.

The Art of Lunch

September 14

Leading jazz guitarist Michael Price, who recently returned from America, joins bass player Craig Scott of the Don Burrows Quartet, for a program of jazz with a contemporary twist.

September 21

Geoffrey Burgess, Australia's foremost Baroque oboist gives a recital of 18th and 20th century music featuring Benjamin Thorn's Segaloc and Three Pieces by John Exton, plus works by Bach and Telemann.

Diary - School of Creative Arts

Long Gallery, The University of Wollongong, Northfields Avenue.

Open to the public Monday to Friday 10 to 12.30 and 1.30 to 4 pm; Sundays 1.30 to 4 pm.

Sales area: small paintings/prints/ceramics/art cards/frames/SCARP magazine.

Sunday September 17 to October 8

Preview Friday September 15, 7.30 pm to 9.15 pm

Gregor Cullen: original prints; Ann Ferguson: Original prints; Leonie Molloy: Original prints; Idris Murphy: Paintings/The Ecumbene Lithographs/The Heretic, DCA Submission; James Taylor: The Little Paralleli Piped/Retrospective Typographics/ and Exhibition of Books, Works and Typography, MCA Submission; Simon Tognetti: Ceramics.

Exhibition inquiries to John Eveleigh, Gallery Coordinator. General inquiries to Jenny Fullerton, Gallery Receptionist. Telephone (042) 27 0996, internal extension 3996.

Constellation of Jazz Stars

Tommy Emmanuel (Australia's top guitarist)

Andrew Firth (young clarinet ace)

Su Cruickshank (TV star, compere, vocalist)

Don Johnson (brilliant US flugel horn payer) and his Canberra School of the Arts Big Band

And

Don Harper (Australia's leading jazz violinist) and his Wollongong University/Conservatorium Show Band,

at Wollongong Town Hall on Friday October 20

Tickets at Illawarra Performing Arts Centre, Wilson's

Record Bar, Conservatorium (042) 28 1122, University

Jenny Stewart or Sheila Hall (042) 27 0987.

Admission: Adults \$14, concession, students & children \$7

Seminars

Department of Accountancy

Seminars are held in Room 2001, in the Department of Accountancy, the Social Sciences Building, at 11 am. Anyone interested is cordially welcome. Inquiries to Hai Yap Teoh, Seminar Convener, telephone 27 0625.

Friday September 15.

Mr Brian Andrew, Head of Accounting, Macarthur Institute of Higher Education, Campbelltown, *Further Evidence on the Relationship between Profit Funds and Cash Flows - Australia and Singapore.*

Department of Biology

Seminars will be held in Lecture Theatre G.19, Building 35 at 12.30 pm.

September 19

Dr Neal Andrew, Department of Zoology and School of Biological Science, University of Sydney, *Contrasting effects of two herbivores on the structure of shallow subtidal systems in NSW.*

Biomedical Evening Series

Each seminar will be preceded by dinner at the Union Bistro at 6.30 pm. All those interested are welcome to meet the speaker at the Bistro. Please contact the Convener, Convener: Dr E. J. Steele (042) 27 0434, so that appropriate table bookings can be made. Seminars begin at 8 pm in the Biology Meeting Room, building 35.

Wednesday September 13

Sponsored by Amersham.

Associate Professor Ron Trent, Clinical Immunology Research Centre, University of Sydney, *Regulation of haemoglobin F in eukaryotes.*

continued over page

Seminars, continued from page 7

Department of Chemistry

Seminars are held on Thursdays at 11.30 am in Room 18.206.
Inquiries to John Carver, ext 3340.

September 14

Dr Bruce Wild, Research School of Chemistry, ANU, *Stereoselective synthesis of arsenic and phosphorus macrocycles and cages.*

September 21

Dr Helmut Hugel, Research School of Chemistry, ANU, *Organotitanium Chemistry*

Department of Computing Science

Visitors parking on the University grounds will be charged a fee of \$1. This fee will be reimbursed by the Department.

Alex Zelinsky, Convener

Friday September 15 at 1.30 pm in room 15.206A

Associate Professor Peter Burton, Cognitive Science Group, University of Wollongong, *Sixth Generation Adaptive Expert System and Beyond*

Friday September 22 at 1.30 pm in room 15.206A

Mr Alex Zelinsky, Lecturer, Department of Computing Science, University of Wollongong, *Robot Navigation with Exploration*

Department of Economics

Seminars are held in room 19.2085. Information from Dennis O'Brien, (042) 270 654 (ext. 3654) or in room 19.2076.

Wednesday September 20 at 12.30 pm.

Amelia Preece, Visiting Lecturer, Economics Department, University of Queensland, *Time enough to shop.*

Wednesday September 27 at 12.30 pm.

Ernestine Gross, Senior Lecturer, School of Banking and Finance, University of

NSW, *Multinational producers in an Arrow-Debrue type general equilibrium model*

Faculty of Education Visitor Program

Wednesday September 13, 12.30 to 1.30 pm in building 21:10

Ms Mavourna Collits, Head, Department of Educational Studies, University of Western Sydney, *R S Peters and Teacher Education*

Mavourna Collits is researching Richard Peters, Professor of Philosophy of Education at the London Institute of Education from 1962, and his influence on teacher education in Britain and Australia. Her seminar will focus on the 'model' of teacher education developed by R S Peters, trends in teacher education and the shift more recently in teacher education towards the right.

Bring your lunch - tea, coffee and juice will be provided.

Contact: Dr N J Kyle, ext 3374

Department of Electrical and Computer Engineering

Monday September 18 from 12.30 to 1.30 pm in room 35G45

Mr Z.Q.Chen, *Electrical conductance tomography.* Miss Shi Hao, *Combined vision and tactile sensor.*

Department of Geography

Thursday 14 September, 12.30 to 1.30 pm, in room 19/GO27

Dr Peter Roy, Department of Mineral Resources, University of Sydney, *South-east Australian estuary types*

Department of Information Systems

Tuesday 12 September 1989 at 11.30 am, in the Kemira Room, Union Building

David Avison, Department of Computer Science and Applied Mathematics, University of Aston, Birmingham, UK, *The Multiview Approach to Information Systems.*

School of Learning Studies

For your diary: seminars will be held on September 20, October 13, 18 and 25. Bring your own lunch, coffee and tea will be provided. Inquiries to Bill Winser, School of Learning Studies, ext 3963.

Wednesday September 20. building 21.104.

Associate Professor Rehana Ghadially, Indian Institute of Technology, Bombay, *Muslim women and modern education.*

Department of Management

Seminars are held on Thursdays at 12.30 pm in room 19.1003

September 28

Jacqui Jennings, *Engineers into Managers: a study of career transitions in an Australian Company*

Department of Mathematics

Thursday September 14 at 1.30 pm, in room 15.204 (Austin Keane Building)

Dr George Goleniewski, National Research Fellow, Department of Mathematics, *Thermal and mechanical behaviour of rubber blocks*

Thursday September 21 at 1.30 pm, in room 15.204 (Austin Keane Building)

Dr Ross S Sparks, Department of Mathematics, The University of Wollongong, *Graphical Display of Data Matrices*

Department of Materials Engineering

All Wednesday seminars 4.30 to 5.30 pm, Room 1.134

Wednesday September 13

Associate Professor N Kennon, *Modern Casting..*

New Literatures Research Centre

Seminars will take place on Fridays at 2.30 pm in the English Department (building 19, room 1095). For further information please contact Paul Sharrad (042) 27 0705 or Shane Donnelly (02) 525 0186.

September 15

Shane Donnelly. English, The University of Wollongong, *Impotence and Irrelevance: the Australian Withdrawal from Papua New Guinea in Stow and Shearston.*

September 29.

Rosemary Colmer. English, Macquarie University, *Polygamy in African Women's Fiction: Buchi Emecheta and Mariana Ba.*

Department of Philosophy

Inquiries to Dr Robert Dunn (042) 270 621.

Friday September 15 at 2.30 pm, room 19.1034.

Dr Roderick Girle, Australian National University, *Indubitability and Deductive Omniscience.*

Department of Psychology

Seminars are held in 19.1056 on Tuesdays between 12.30 and 1.30 pm. For further information contact Sachiko Kinoshita, ext. 3741.

September 12

Dr Marvin Kahn, University of Arizona, Visitor to the National Drug and Research Centre, University of New South Wales, *Mental Health in the indigenous population*

September 19

Dr Saroja Srinivasen, Department of Psychology, The University of Wollongong, *Social anxiety - types and treatments*

Advertisements

ALL UNWANTED TREASURE WELCOME

Garage sale and auction at Pleasant Heights Public School, Alvan Parade, Mt Pleasant on Saturday September 16 from 9 am to 1 pm

Toys, books, clothing, raffle, cake stall, drinks. 'Trash 'n' Treasure', sausage sizzle, teas-coffee, jumping castle. Raising funds for a community all-purpose court. 15% commission to school. To arrange for collection of goods telephone 847101 or 843941.

FOR SALE

1980 Sigma Stationwagon. Beige, four-speed manual, air conditioning, perfect family car (KSF 864) \$5200. Telephone Andy ext 3432 or 71 5025.