


THE UNIVERSITY OF WOLLONGONG



CAMPUS NEWS

Distributed each Tuesday

Deadline for copy noon Monday
of previous week

Editor: George Wilson, Tel. (042) 270926

14 June 1988

UNIVERSITY SELECTED FOR TWO KEY CENTRES OF TEACHING AND RESEARCH

The University of Wollongong has been selected by the Commonwealth Government for the establishment of two Key Centres for Teaching and Research.

The Centre for Advanced Manufacturing and Industrial Automation will be established by the University, at Wollongong. *The Key Centre for the Mining and Minerals Industries* will be a joint venture with the University of NSW.

Key Centres of Teaching and Research are concentrations of high-level activity based on the teaching and research work of existing departments or units. This work must already be of a high standard and have the potential to develop increased capacity to attract high-quality students and staff. The centres are expected to enable higher education to respond to the need of high-level and applied research in areas which are important to national development and the community in general.

From more than 200 applications received only 15 centres will be established in 1988. Competition was extremely keen from institutions with teaching and research skills of the highest standard. The government places considerable emphasis on the development of national priority areas and on co-operation between higher education and industry.

Professor Ian Chubb (Deputy Vice-Chancellor, Academic and Research) said that the selection of The University of Wollongong for the establishment of these centres amounts to national recognition of the standards of excellence established by the University in recent years.

Centre for Advanced Manufacturing and Industrial Automation (CAMIA)

The range of activity and equipment in the Illawarra Technology Centre and in the academic departments places The University of Wollongong in a unique position to become a key centre for teaching and research in the field of advanced manufacturing and industrial process control.

If manufacturing industry in Australia is to improve its competitive position relative to other countries, it must take full advantage of existing and future developments in the technology of automation. The centre will draw upon the expertise of the University's Automation and Engineering Applications Centre and the relevant

University departments to mount a comprehensive training program at all levels from tradesman to manager, to tackle the problem of providing tradesmen, technicians and professionals with the skills necessary to cope with industrial automation technology.

A co-ordinated research program will be directed towards resolving the problems yet to be solved before computer-integrated manufacturing can be widely adopted in Australia.

The centre will receive \$186,000 a year over three years.

The Key Centre for the Mining and Minerals Industries

By combining the expertise of the Universities of Wollongong and NSW a centre will be established that represents by far the largest, best-qualified and most-experienced group of academic talent in mining and minerals in Australia. It will rank world-wide alongside the Royal School of Mines in London, *Ecoles des Mines*, Paris, and the Colorado School of Mines in the USA.

The School will draw on the expertise and equipment of The University of Wollongong's Departments of Geology and Civil and Mining Engineering and the recently formed Key Centre for the Mining and Minerals Industries at the University of NSW.

It will provide opportunity for continuing professional education for people in mining areas throughout Australia. Most professional staff in the mining industry are remote from major centres of higher education. The Key Centre for the Mining and Minerals Industries will use modern techniques and communication methods for distance learning. The School of Mines at NSW has had experience in distance learning, having introduced and externally taught Masters courses in Mining Geomechanics in 1983, while at The University of Wollongong Diploma and Masters courses in Coal Geology have been taught on a sandwich basis since 1981, making them accessible to geologists employed in the coal industry.

New major joint research initiatives will be undertaken in the field of mineral exploration, mining operations and mineral processing based on existing combined faculties and staff resources. Most of the equipment and research interests at the two universities are complementary.

The centre will receive \$220,000 a year over three years.

General Notices

Demand for TASC expertise continues to grow — \$1/2 million and rising

The growing importance of the effective development and application of technology in Australia's economic performance, and of TASC's reputation as a quality performer of strategic research to assist decision-making in the public and private sector, is reflected in the growing demand for TASC's services.

Ten new contracts have been obtained, in the first five months of 1988 (see list), taking the total income thus far above the half-million-dollar level.

Bond Corporation -- Preliminary Technology Evaluation of Gallium Arsenide Microwave Monolithic Integrated Circuit Based Products in the Communication Industries.

JETRO -- Government Support for Industry Research and Development.

Strategies Pty Ltd (NERDDC Sub-Contract) -- The Study of the Role of Human Factors In Safety Management in the Black Coal Mining Industry.

Institute of Engineers -- Interactive Science Centre.

Curriculum Development Centre -- Towards a National Science Education Statement.

CRA -- Management Development Program.

NIES -- Model of University Industry Interface Strategies.

National Building Technology Centre -- Research Evaluation Impact Assessment, and Strategy.

ESCAP -- Technology Atlas of Australia.

UNESCO -- Asian S and T Policy Coordinating Board.

FULL FEE-PAYING OVERSEAS STUDENTS

A seminar entitled 'Marketing the Invitation to Full Fee-paying Overseas Students' will be held at The University of Wollongong on July 6 under the auspices of AITEA.

Chairman will be Mr George Cepak, Manager, Planning and Marketing. The keynote address will be given by Mr Jim Langridge, Deputy Secretary and Business Manager in the University.

Other speakers will be Mr Brian Shepherd, Deputy Director, Publicity and Promotions, Division of Business and Marketing, Riverina-Murray Institute of Higher Education, Mr Ross Woodham, Registrar, Cumberland College of Health Sciences, and Mr Roger Peacock, Assistant Secretary, Overseas Students Policy Branch.

The program will concentrate on these aspects associated with the attraction of full fee-paying students -

- the marketing exercise - spending money to make money
- where to go for students
- agents, agents and more agents
- pitfalls to avoid
- essential steps that must be taken
- you need to have 'satisfied' customers -- how this can be accomplished
- educating staff, academic and general, on the value and importance of these students
- the role of the Commonwealth Overseas Student Policy and Program Administration
- how long will Austrade help?
- IDP -- increasing professional involvement.

Registration by Wednesday June 22 to T. J. Brew, Senior Assistant Secretary, The University of Wollongong. Cost: AITEA members \$30, non-members \$50.

WOLLONGONG GIVES BIRTH TO STEPAN

A conference at The University of Wollongong of senior Asian representatives agreed to establish a network designed to draw all agencies and people involved in science and technology policy in the Asian region together and to develop a strategy for training and research.



The staff of TASC. Front row, from left are: Jeff Franklin, Fran Collyer, Professor Stephen Hill, Teresa Street and Professor Geoff Oldham (Director of Science Policy, Research Unit, at Sussex University). Back row: Professor Ron Johnston, Don Scott-Kemmis, Terry Darling, Dr Mark Dodgson and Margaret Voorwinden



At the birth of STEPAN are Asian representatives of Unesco and, in the foreground with Professor Stephen Hill, Mr V. Kotchetov, Asian Desk Officer from Unesco, Paris

The network will be called STEPAN (Science and Technology Policy Asian Network). The Centre for Technology and Social Change (TASC) at The University of Wollongong will be the Regional Network Centre and will have a supervising and initiating role in line with the direction and interests of the participating institutions.

Professor Stephen Hill from TASC, and chairman of STEPAN, said that the meeting, which was convened by UNESCO and attended by Asian representatives who were all prime movers in the area of science and technology policy, turned an idea that has been incubating for six years into an operational reality.

The network will limit its activities to practical objectives at first. The immediate activities in the first three years will be to -

1. Co-ordinate resources and the dissemination of information about STP seminars, training programs and research projects.
2. Identify STP training and research needs.
3. Take initiatives in generating information for defining regional and sub-regional priorities in training, research and information provision.

For further information contact Professor Stephen Hill on (042) 26 8866 or (042) 27 0745.

OLGA MASTERS MEMORIAL CONFERENCE

The New Literatures Research Centre, Department of English, has attracted substantial funding for activities associated with the Olga Masters Conference in July.

The Australian Bicentennial Authority, through its Program for Older Australians, has provided \$6200 by way of a direct grant to assist a number of older writers from various states of Australia to come to the Olga Masters Memorial Conference at Wollongong. These writers, like Olga Masters, began writing after they had completed family and community commitments.

The National Book Council is providing \$2500 to fund a

Literary Tour of Wollongong and a Writers' Workshop by well-known writers to coincide with the Conference. These well-known Australian writers are Rosemary Dobson, Gwen Harwood, Jessica Anderson and Barbara Giles. They will also present a panel discussion, 'Aging and Creativity', on Sunday July 10.

The Literary Tour will include readings at local libraries, interviews, and book signing, and the Writers' Workshop will be held at Gleniffer Brae on July 11 from 9.30 am until noon.

The Writers' Workshop will incorporate a 45-minute plenary session with these well-known authors, and a 90-minute workshop in small groups. Coffee will be served.

Cost will be \$10 and \$5 (students).

Numbers will be strictly limited.

Enrolment inquiries and other information is available from Mr Ron Pretty, ext 3867 or 3985.

...AND AT THEATRE SOUTH...

Theatre South in conjunction with The Olga Masters Memorial Conference will presents 'An Evening of Olga Masters' Works -- dramatised readings and plays -- at The Bridge Theatre, Coniston, on Saturday July 9 at 8 pm. Cost \$10, concession \$8. Bookings, 296144

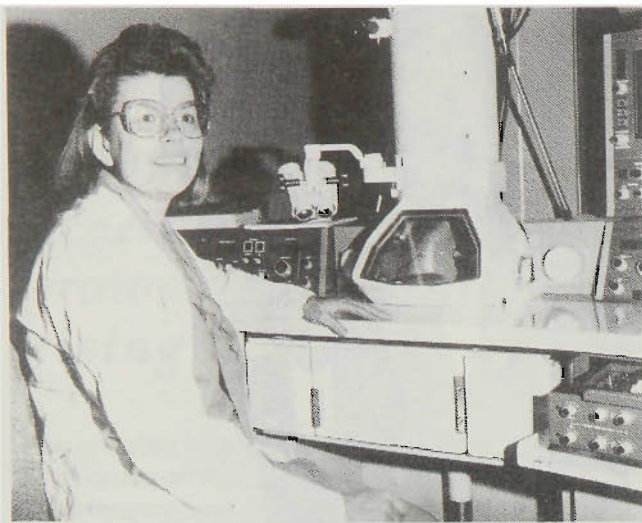
LEXIS/NEXIS

The latest system to be added to the Library's online searching services is LEXIS/NEXIS. The NEXIS service provides business, financial, news and general-interest publications. The LEXIS service is mainly concerned with US federal and state court cases and federal statutes and regulations but does have a section dealing with Australian and English cases and law reports.

US patents and government documents and numerous company annual reports are also available from LEXIS/NEXIS.

For further information, contact Mary Tow, ext 3536.

General Notices continue overleaf



Sharon Nightingale lectures in Metallurgy and Materials Engineering

CERAMICS ENGINEER TO LECTURER

Sharon Nightingale, lecturer in the Department of Metallurgy and Materials Engineering, brings to the University eight years industrial experience as a Ceramics Engineer with BHP, chiefly in the field of refractories applications in the ferrous industry. Sharon is a graduate of Engineering from McMaster University, Hamilton, Canada. She has been a part-time lecturer in metallurgy at The University of Wollongong for the past two years.

MANAGING SCIENCE IN A STEADY STATE

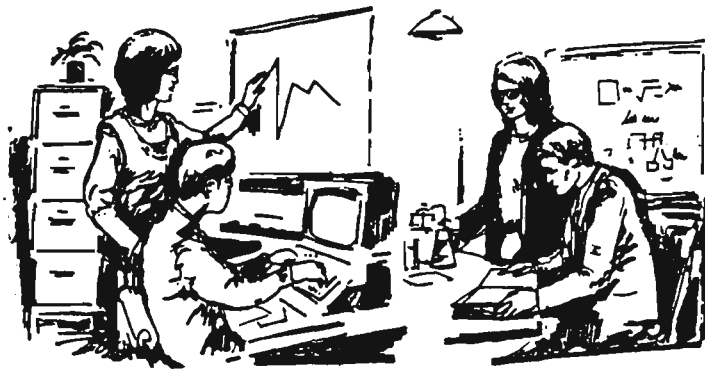
Science is under extreme pressure from contrary forces. Research is becoming not only more costly and complicated but is offering widening horizons for practical exploitation. Yet it is expected to serve the nation's needs ever more directly within a roughly constant envelope of resources. In this new situation, concerted action is essential if science is to achieve the high standards that will enable it to contribute most positively to public well-being.

A broad outline of the present position will be given at a seminar to be held on Monday June 20 at 2.30 pm in the Illawarra Technology Centre, Conference Room 1. Professor John Ziman FRS, who is chairman of the Science Policy Support Group in the UK, recently wrote a report for the UK, *Science in a Steady State: The Research System in Transition*.

John Ziman is Visiting Professor at the Department of Humanities at Imperial College, London. He was born in 1925, and was brought up in New Zealand, where he took his first university degree. He then studied at Oxford, where he completed a DPhil in theoretical physics in 1952. In 1954 he became a lecturer at the Cavendish Laboratory, Cambridge, and later a Fellow of King's College. In 1964 he was appointed to a chair at Bristol where he was the Director of the H.H. Wills Physics Laboratory from 1976 to 1981. His researches in the theory of the electrical magnetic properties of solid and liquid metals have been published in a number of scientific papers and books, and earned his election to the Royal Society in 1967. In recent years, his interests and activities have been mainly concerned with various aspects of the social relations of science -- philosophically though his books.

His present position as Chairman of the Science Policy Support Group in London involves him in the planning of research on official science policy and in the dissemination and implementation of its results.

Further information from TASC on 26 8866 or ext 3639.



Staff Roundup

SUPERANNUATION CONTRIBUTIONS DURING PROBATIONARY EMPLOYMENT

Under the new State Authorities Superannuation Scheme all new permanent general staff employees are immediately eligible to contribute to superannuation from their entry on duty. Previously, these employees did not have access to superannuation until the completion of their probationary period (usually six months). These arrangements will no longer apply.

However, eligible employees should be aware that access to superannuation does not indicate permanency. New permanent staff are still appointed subject to satisfactory completion of a probationary period. All new staff will be advised of this requirement when they enter on duty. Enquiries on this matter may be directed to Chris Grange on ext 3929.

VISIT BY SUPERANNUATION BOARD REPRESENTATIVE

A representative from the State Authorities Superannuation Board will be visiting The University of Wollongong on June 22 and 23 to talk to interested staff members regarding the State Superannuation Fund (SSF) and the State Authorities Superannuation Fund (SASS). The talks will be held in Room 303 in the Administration Building at the following times:

June 22

10 to 11 am -- State Authorities Superannuation Scheme

11 am to noon -- State Superannuation Scheme

June 23

10 to 11 am -- State Authorities Superannuation Scheme

The representative will be available for interviews with staff members currently in the State Superannuation Scheme from 11 am until noon on June 23.

Those interested in attending any of these sessions should contact Barbara Smith on ext 3930 before June 17.

New general staff who have joined the University since April 1 this year are encouraged to attend one of the talks on State Authorities Superannuation Scheme.

COMING STAFF DEVELOPMENT ACTIVITIES

The following activities are scheduled in the near future. Staff interested in undertaking any of the programs should complete the blue nomination form, available from Personnel Services, and return by the date given below. Staff must have their Head of Department's recommendation on the nomination form.

Do Finances Baffle You? A Seminar on The University's Financial System -- This seminar looks at the University's financial system and how it works. It especially considers what staff need to know as users of the finance system (eg monthly reports, purchasing items, arranging payments, etc). **Target Audience** -- All staff involved with University funds. **Duration** -- 1/2 day. **When** -- July 28. **RSVP** -- June 27.

Effective Communication Skills Training -- This workshop will emphasise the skills of developing self-awareness and self-confidence, decision-making, and communication. Skills such as listening, constructing assertive and clear messages, obtaining feedback, saying no where appropriate, and handling aggression in ways based on self respect and respect for others will be developed.

Target Audience -- All staff. **Duration** -- four half days. **When** -- August 3, 10, 17, 24. **RSVP** -- July 4.

Further details: Wendy Raikes, ext 3946.

DO YOU SEE THEM?

The University, as well as advertising its vacancies fortnightly in the local newspaper, distributes notices of these and other vacancies (eg Job Rotation circulars) throughout the campus. Interested staff should ensure they sight these notices at least fortnightly. If not, staff should contact their department/section secretary or their supervisor to ensure access to vacancy notices. Staff who are unsure where notices are sent to in their vicinity may contact Jenny Jarman on ext 3935.

STAFF REQUIRED FOR JURY SERVICE

Staff summonsed as jurors should:

1. Notify the Department/Section Head and the Leave Clerk (ext 3914) as soon as possible of the date upon which they will be required to attend for jury duty.
2. Request the Sheriff's Office to issue a receipt for -
 - (a) attendance
 - (b) the amount of money received
3. Upon return to work refund to the University Cashier the value of any monies received from the Sheriff's Office, (b) above, and request a receipt for such refund.
4. Complete a Leave Form specifying 'Jury Service' for the absence from work and attach to the Leave Form a copy of the Sheriff's Office receipt and the University Cashier's receipt.

CURRENT VACANCIES

The closing date for applications is indicated in italics.

- * Word Processor Operator (part-time), Faculty of Arts, *June 17.*
 - + Research Fellow, History, contract 2 years, *June 17.*
 - * Research Assistant Grade 2, Teaching Company Scheme, *June 24.*
- Further details: *Gary Graham, ext 3935, +Ross Walker, ext 3934.

STAFF CHANGES

New Starters

- Mr G.E. Kohler, Technical Officer, Biology.
Mr V.D. Mai, Consultant Programmer, Computer Services.
Ms E.A. Lilley, Research Assistant, Psychology.
Ms L. Shepherd, Computer Trainee, Computer Services.



The Ethel Hayton Trophy -- the objectives

Our recent loss of Ethel Hayton, one of the University's most dedicated and active supporters in our community, prompts me to seek your help to make more widely known the objectives of the Ethel Hayton Trophy. When Ethel presented to the University a small sculpture of the campus figtree in bronze by Gino Sanguineti, the Community Involvement Committee of the Friends suggested to the Vice-Chancellor that he might award it annually to an academic unit or member of the academic staff for notable achievement in an activity or activities which enhanced community support of the University.

The reasoning was that there is mutual benefit to be gained by both the University and the community where both are involved in activities which have common or mutually supportive objectives. The starting point is with activities initiated in the University which will be seen to attract community involvement. The aim is therefore to encourage and recognise such initiatives.

Since the range of such activities is unlimited and their nature and content so varied we avoided seeking the most notable and sought only to recognise notable achievement. How, then, can such activities be identified and assessed? The Community Involvement Committee sought also to avoid dissipation of effort by the academic staff involved from the activities concerned to the making of their case for the award. Accordingly, they undertook to seek out activities which were notable and to prepare a draft citation for each, consulting the staff concerned, to try and achieve a succinct description in lay terms suitable for use by the media.

The Vice-Chancellor undertook to seek the advice of senior representatives of all local media organisations in the selection of one for the award each year. It was hoped thereby to get a quite unbiased external view of activities expected to have, or which have had, demonstrable support by the community. By involving the media we also hoped in turn to achieve wider publicity for the award. This is assisted if it is made on a suitable public occasion each year and the trophy is then exhibited in public locations.

Members of the Committee are currently preparing draft citations for the award for activities in 1987. The trophy, together with the citation for the 1986 award, is on display in the foyer of the Wollongong City Library and will be returned to the foyer of the Michael Birt Library at the University prior to its award later this year.

I ask that any member of the University who knows of an activity which should be considered for this award will tell Giles Pickford, as executive officer of the Friends, about it so that the committee can try to ensure the award is truly representative and will achieve its objective of promoting activities which are mutually beneficial to the University and the community.

John Bell

Member, Community Involvement Committee

Ms P. Nutschnig, Cleaner, Campus East, Business Services.

Ms A. Milner, Clearner, Campus East, Business Services.

Ms C.A. Stiles, Librarian, Library.

Transfer/Promotion

Mrs K.A. Cooper, Lecturer, Accountancy and Legal Studies.

Research Funds

The sources of research funds given below are available to members of academic staff. Further information including application forms may be obtained from Kim Harriss (ext 3201). Intending applicants are reminded that all research applications must be forwarded through the Office of Research and Post-graduate Studies.

MANAGEMENT RESEARCH

The National Council of the Australian Institute of Management is proposing to commission a major research study which will examine

- The Manager's Role in Planning Future Directions for a Workforce in Partnership -- Sharing
- Response and Rewards within the Enterprise.
- Expressions of interest are being sought.
- Applications close with the University on July 4.

DIABETES RESEARCH AND EDUCATION GRANTS

Apex and Diabetes Australia invite applications for grants for diabetes research in basic, clinical and applied (educational, sociological and psychological areas).

Applications close with the University on July 15.

PREVIOUSLY REPORTED IN CAMPUS NEWS

	Internal Closing
Australia-China Education Co-operation Program	June 16
Australian Academy of Humanities Grant-in-Aid	June 16
RV Franklin Ship Time	June 16
Australian National Council on AIDS grants	June 16
Clive and Vera Ramaciotti Foundation Grants	June 16
The Australian Academy of Science and Australian Academy of Technological Sciences and Engineering UK Exchange	June 17
Film and Video Grants	June 17
Electrical Research Board Grants	June 23
The NSW State Cancer Council Resarch Grants	June 24
Literature and History	June 30
I W Wark Medal	June 30
Rothmans Fellowships	July 10
Law Foundation of NSW Travelling Fellowships	July 15
Generic Technology Grants	July 15
Australian Academies Exchange Fellowships	July 15
Harkness Fellowships	August 31
Japan Society Exchange Program	September 19
Benians Fellowships	October 30
Academy of Science China Exchange	November 17
Earthwatch	Any time
Criminology Research	Any time
Pig Research Council -- Support for Eminent Visitors	Any time
MERA Project Grants	Any time
Clive and Vera Ramaciotti Travel Grants	Any time
James N Kirby Foundation	Any time
Telecom Research Laboratories	Any time
NSW State Cancer Council Travel Grants-in-aid	Any time

EEO news....

WHO'S 'QUALIFIED'?

A question asked of me recently concerned whether an applicant for a general staff position with the most formal qualifications would always be successful in gaining the position over 'less-qualified' applicants.

The answer is simply that qualifications refer to one's total background relevant to the skills and abilities required of the position. Certainly this includes formal qualifications like degrees and certificates, if they are relevant but it is only one factor.

It is the job of the selection committee members to determine 'merit' which refers to the person best able to fulfil the requirements of the position, and 'merit' takes into account formal qualifications, experience (both paid and voluntary work), and personal attributes, as they affect performance of the duties of the position.

It is a very difficult task, and that is why it is essential to have a committee of people with different backgrounds and expertise who are themselves trained in the process of merit assessment.

When I first came to the University, some people mistakenly thought that EEO meant less qualified people would be getting jobs. Now I hear complaints that people are getting jobs 'just because they're the most qualified'.

Kathy Rozmeta
EEO Co-ordinator

Friends of the University

WANTED BOOKS WANTED

Needed now by the Graduates' Group of the Friends for their bookstall on University Open Day, August 28. Please deliver donations of novels, texts, comics and old publications to Friends' House, 55 Northfields Avenue, Keiraville. Your old stuff can be somebody else's treasure!

For inquiries telephone 612714 (Dapto), 291951 (Wollongong), 672229 (Austinmer).

Book conveners: Johanna de Jonge 672229, Marjory Macdonald 291951.

Concerts, Exhibitions and Entertainment

EXPLOSIVE PRODUCTION OF LOOK BACK IN ANGER

Wollongong Workshop Theatre is still running its explosive production of 'Look Back in Anger', by John Osborne. This gutsy play is on now at Workshop Theatre, Gipps Street, Gwynneville. Evening performances on Wednesdays, Fridays and Saturdays. Final performance will be on Saturday July 11.

For bookings ring Wilson's Record Bar 296169. Tickets \$6 with concession \$4.

The production is being staged in co-operation with the School of Creative Arts, The University of Wollongong.

Seminars

DEPARTMENT OF SCIENCE AND TECHNOLOGY STUDIES

Date and time: June 22, 1.30 pm
Venue: Building 19, room 2061
Speaker: Ted Steele (Biology Department)
Topic: The reception of somatic selection theory, 1978-88.

PREJUDICE IN THE PUBLIC ARENA -- THE ASIAN AUSTRALIAN PERSPECTIVE

The Asian Australian Resource Centre (NSW) will be conducting a half-day seminar to present the Asian Australian perspective in the current debate about multiculturalism, immigration, racism, education and settlement issues.

Speakers include Mrs Franca Arena MLC, Dr Andrew Jakubowicz (University of Technology), Ms Irene Moss (Human Rights Commission), Hon Helen Sham-Ho, MLC and Mr Uri Themal (Deputy Chairman, Ethnic Affairs Commission).

There will be an open panel discussion involving the audience, the speakers and a representative from the Office of Multicultural Affairs.

Location: Carslaw Building, Lecture Hall 10, Sydney University.

Date: 9 am to 1 pm, Saturday July 16

Cost: \$10 for institution, \$5 for individual, \$2 concession

Enquiries: Peggy Heng or Gary Lee – Tel. 79778244

Postal Address: Asian Australian Resource Centre, PO Box 368, Petersham, NSW 2049; GPO Box 1008H, Melbourne, Vic 3001.

WOMEN'S STUDIES SEMINAR

Speaker: Sue Rowley (Creative Arts) with readings by Lisa Scott-Murphy (Creative Arts)

Topic: Haggard Women and Lonely Bushgirls Waiting: Representation of Women in Australian Bush Mythology.

Date and Time: June 14, 6.30 pm

Venue: Building 19, room 1034

Inquiries to Sue Uniacke, Department of Philosophy, ext 3604.

DEPARTMENT OF CHEMISTRY

Date and time: Friday June 17, 11.30 am

Speaker: Professor N. Kane-Maguire, Furman University, South Carolina, USA

Topic: Electro-generated Chemiluminescence in Transition Metal Systems

Date and time: Friday July 22, 11.30 am

Speaker: Mr Ian Carter, Uniadvice

Topic: Commercialising Research and Technology

For further details please contact Dr G.G. Wallace, ext 3504.

ALUMNI PUBLICATIONS

Friday June 17, John Clarke Gallery, Third Floor, Squarehouse, The University of New South Wales, 10 am to 4 pm.

Organised by the Australian Institute of Tertiary Educational Administrators (AITEA).

Cost: members \$25, non-members \$30.

Contact Mr Peter Anderson, Executive Officer, Graduates Office and Alumni Centre, University of New South Wales, PO Box 1, Kensington, NSW 2033.

DEPARTMENT OF PHILOSOPHY

Date and time: Friday June 17, 2.30 pm
Topic: Reasons, Attitudes, and Factive Feelings
Speaker: Dr Robert Dunn, Senior Lecturer, Department of Philosophy, The University of Wollongong
Venue: Department of Philosophy Seminar Room, North Wing, Social Sciences Building, The University of Wollongong (Building 19.1034).

WOMEN AND THE LAW

Date and time: Saturday June 18, 10 am to 4.15 pm
Venue: The University of Wollongong, Engineering Science Building 35, Room G19.

Program is designed to provide a forum for women to learn about, inquire into and discuss, legal matters of a diverse nature.

Experienced solicitors will discuss current issues.

The program has been developed by the Business and Professional Women's Club of Illawarra in association with the Wollongong Uniadvice Limited, Division of Continuing Professional Education.

Registration forms from The Co-ordinator, Wollongong Uniadvice Ltd, The University of Wollongong, PO Box 1144, Wollongong 2500.

DEPARTMENT OF MECHANICAL ENGINEERING POSTGRADUATE SEMINARS

Time: 11 am (Friday)

Venue: Department of Mechanical Engineering Seminar Room, Building 8.

July 1

Speaker: Robert O'Meley

Title: Flow Separation from Bluff Bodies

DEPARTMENT OF BIOLOGY SEMINAR SERIES

Wednesdays 3.30 pm, Building 35, Room G19.

June 15. Dr Tony Hulbert, Biology Department, The University of Wollongong.

Physiological development in the Tammar wallaby: A biomedical model.

DEPARTMENT OF BIOLOGY BIOMEDICAL EVENING SEMINARS

Each seminar will be preceded by a char-grill dinner at 6.30 pm in the Union Bistro. Those interested in attending the dinner should contact Dr E.J. Steele, so that appropriate bookings may be made. Seminars begin at 8 pm in Lecture Theatre G19 Building 35. (The assistance of Dr Stephen Andersen is acknowledged).

June 29. Dr P. Klinken, Walter and Eliza Hall Institute of Medical Research, Melbourne.

Effect of raf and myc Oncogenes on Haemopoietic Cells.

Convenor: Dr E.J. Steele
(042) 270434



Laurens Tan -- growing reputation in the world of the arts

CREATIVE ARTS LECTURER FOR TOURING EXHIBITION

During the 5th National Ceramics Conference, held at the University of New South Wales in May, Mr Laurens Tan of the School of Creative Arts was involved in seminars and conferences as a presenter, including a paper on education in ceramics. Further recognition is that Laurens' work is to form part of an important Bicentennial Collection.

A full itinerary has been organised by Macquarie Galleries, in conjunction with the Regional Galleries Association of New South Wales, for a collection of prints by 12 different artists, accompanied by photographs of each artist and printmaker by Max Dupain.

The portfolio was commissioned by the Cancer Council of New South Wales to mark the Bicentenary.

The exhibition will be seen in numerous New South Wales and Queensland, Western Australian and Victorian Regional Galleries. A description of Tan's work, published in the *Macquarie Galleries Bulletin*, says, *inter alia* --

In his work Tan creates planes, proportions and spaces which reflect many perspectives on reality. The pieces draw the viewer into the act of understanding by the process of contrast, juxtaposition and synthesis. They employ laughter and naivety, as well as sophisticated symbolism. They demonstrate Tan's eclectic approach to materials and draw on his wide range of interests from Western philosophy to the collection of toys and souvenirs. Beyond this, the pieces are visually intriguing, some parts pivoting in perfect balance, each element in the sculptures placed precisely and serenely in relation to the others.

HOUSE TO LET

Wanted: tenants for a fully-furnished, 3 bedroom house in Thirroul between December 1988 and June 1989. Contact Dr Rob Whelan, Biology, ext 3442, or 671037.

WANTED -- CAT LOVER

To feed/mind three unusual felines in the comfort of their Wombarra home from mid-July to October Long Weekend. Owner going overseas: free accommodation in return for care of house and cats. Phone 674468 (after 7 pm)

CAR FOR SALE

Subaru 1600 DL, 1977, white, good order, very reliable, study leave imminent, \$2,600. Ext 3726 or 360186.

ACCOMMODATION REQUIRED

A British lecturer and her family wish to rent a house or flat for the period July to November. Please contact Gerald Nanson, Department of Geography, ext 3631 or 3721 (home 846461).

SIGMA DATA UNIX POSTGRADUATE BURSARIES.

Applications are invited from Postgraduate students undertaking research which will enhance Australia's reputation in the field of operating system technology particularly as it relates to UNIX.

The Research Award is tenable at all Australian universities.

Six \$5,000 bursaries will be awarded by the Sigma Data Corporation.

To be eligible you must be an Australian citizen currently attending an Australian university and be the holder of a Commonwealth Postgraduate Research Award (or its equivalent).

Our objective is to encourage graduates from computer science, computer engineering and information technology courses to undertake postgraduate studies.

You will probably be working towards a degree such

as Master of Science, Master of Engineering Science, or Doctor of Philosophy.

For an application form, contact the Department Head of Computer Science at your university, the North Sydney office of Sigma Data, or post the coupon.

Applications must be lodged with Sigma Data no later than July 1st, 1988.

Please send me an entry form for the Sigma Data \$5,000 Postgraduate Research Awards.

Name _____

Address _____

Postcode _____

Telephone _____ Degree _____

University _____

SDC/0008

SIGMA DATA. THE AUSTRALIAN COMPUTER COMPANY.

157 WALKER STREET, NORTH SYDNEY, N.S.W. 2060. TELEPHONE: (02) 957 3777.

