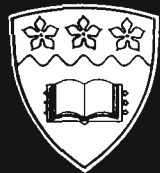


THE UNIVERSITY OF WOLLONGONG

CAMPUS NEWS



Distributed each Tuesday

Deadline for copy noon Monday
of previous week

Editor: George Willson, tel. (042) 270926

3 March 1987

NEW LOOK SECRETARIAT

Since the establishment of the new academic structure in 1986 the Secretariat has undergone considerable changes, both in its personnel and its responsibilities. The most significant change has been the location of the Faculty Officers (previously called Faculty Secretaries) within the Faculty areas. Associated with this relocation has been a considerable change in the emphasis of their responsibilities, reflecting the higher profile of the Faculties following the appointment of Deans.

The Secretariat is a unit of the Academic Services Branch of the Administration under the responsibility of Assistant Secretary Peter Wood. The Administrative Officer in the unit is Trevor Cuthbertson (ext 3928) who, apart from co-ordinating the staff in the unit, has responsibilities in relation to the Academic Senate (of which Peter Wood is Secretary), the co-ordination of Graduation arrangements and in some legislative matters.

The only other member of the unit still located in the Administration Building is Marie Cooper (ext 3947), whose responsibilities include the Academic Review and Appeals Committees, elections and the co-ordination of the University Annual Report.

The Faculty Officers and their phone extensions are:

Arts: Warren Mahoney, ext 3395

Commerce: Moira Bowman, ext 3662

Education: Denise Stevens, ext 3572

Science: Pat Macquarie, ext 3481

Engineering and Mathematical Sciences: Maria Roberts, ext 3408 (Engineering), ext 3820 (Mathematical Sciences). Maria usually spends Tuesday, Wednesday and Friday in Engineering and Monday and Thursday in Mathematical Sciences.

The Faculty Officers have a dual line of responsibility. While they belong to the University Secretary's Division as members of the Secretariat staff and assist with such central administrative activities as graduation, enrolments and some central committees, in most day-by-day Faculty activities they are responsible to the Dean.

Within the new Faculty structure, the role and duties of the Faculty Officers have been gradually evolving over the past eight months and, no doubt, will be further defined in the coming months.

Apart from being Secretary for meetings of the Faculty and its Planning Academic and Examination Committees, each Faculty Officer has a range of responsibilities in Faculty-wide activities, including liaison between the Faculty and Administration; the maintenance of records of Faculty accounts and student files; and the co-ordination of Faculty Calendar entries, Annual Reports and subject proposals.

General inquiries concerning the Secretariat should be directed to Trevor Cuthbertson (his extension again, 3928).

THE FUTURE OF RESEARCH IN UNIVERSITIES

The ASTEC Report on Research in Higher Education, with its commitment to radical changes in the basis of funding of research in universities, was due to be tabled in Parliament on February 24.

The outcome of this report, together with recent pronouncements of CTEC, and the 150 per cent tax incentive scheme for industrial R&D, are likely to transform the basis for the funding, and subsequently the organisation, of research in universities.

Dr Rod Badger, Assistant Secretary, Strategic Policy Branch, and Dr Phil Price, Director, Research Policy Sector of the Department of Science, will provide a report on the new proposals for government support of university research and explore the implications for universities and academics.

Venue: Engineering Building Room 35G45

Time: Thursday March 5, 9.30 am to 11.30 am

For further information: The Centre for Technology and Social Change, ext 3639.

'Macbeth shall never be vanquished until/ Great Birnam Wood to High Dunsinane hill/ Shall come against him.' But this is not a latter-day interpretation of Macbeth — but a scene from Wollongong University 1987, as cotton trees are uprooted for replanting over towards the new Administration building



General Notices

NOTICE TO RE-ENROLLING UNDERGRADUATE STUDENTS

GENERAL STUDIES SUBJECT: GENE113 – HUMAN DRAMA

This subject was inadvertently not submitted for inclusion in the 1987 University *Calendar*.

However, it will be available in First Session, 1987.

There is a strong interdisciplinary base to the subject and it is thought that it will be of interest and value to students from the Departments of Sociology, Psychology and English as well as the School of Creative Arts and the Faculty of Education. (It is envisaged that the subject will be especially valuable for teachers.)

Subject Description:

GENE 113: Human Drama

1 Lecturer, 2 hr tutorial/workshop per week.

Assessment: 1 essay, 1 tutorial paper, two practical projects per session. (Tutorial Paper Length: 500-750 words. Essay Length: 1000-1500 words).

The aim of the course is to explore the manifestations and potentialities of drama as a natural rather than artificial mode of behaviour. It involves the study of the expression of beliefs, values, attitudes, opinions, feelings, etc, by means of moving (and vocal) figures and the uses of dramatic activities for expressive, developmental and therapeutic purposes.

Specific areas to be considered include the idea of drama and its theatre; play and games as the beginnings of dramatic activity; non-verbal communication; movement as a means of dramatic expression; the dramatic use of language; role-playing; improvisation and play-making; simulation games; drama in education; drama and therapy.

Practical, experimental activities will form a significant component of the course.

Preliminary Reading:

Garvey, Catherine. *Play*. Fontana/Open Books.

Berne, Eric. *Games People Play*. Penguin.

Hall, S.T. *The Silent Language*.

Moreno, Jacobs. *The Theatre of Spontaneity*. Beacon.

Goffman, Irving. *The Presentation of Self in Everyday Life*. Penguin.

Hodgson, Geoffry. (ed) *The Uses of Drama*. Methuen.

Enquiries: to be directed to M.B. Scott, Department of English.

CALLING ALL WOLLONGONG ENTREPRENEURS

The NSW Enterprise Workshop is seeking budding Wollongong entrepreneurs for its 1987 program. For the first time, the workshop is seeking greater participation from outside Sydney with a seminar also planned at Westmead in Sydney's west. The free introductory Wollongong seminar will be held at The University of Wollongong on Saturday March 7 between 2.30 and 4.30 pm.

Another first is that the workshop's projects this year will include innovations or inventions for the services sector.

The workshop's key to provide training and development in entrepreneurship.

Following the introductory seminar, participants attend workshops in Sydney to be shown how to compile business plans, raise venture capital and establish new enterprises.

Teams are formed to prepare a business plan for potentially viable inventions and compete for the NSW Enterprise Workshop Award. The winner then competes for the National Enterprise Award.

The Wollongong participants will undertake much of their team work locally.

The value of the workshop's program has been under-

lined by the commercial success of the 1985 NSW and National Award winner. The winning business plan was for a spinal immobiliser for use in the event of back injuries.

Already more than 2000 immobilisers have been sold to medical and paramedical sources in Australia.

About 10,000 units are expected to be exported this year and orders for 2,500 have been received already from the UK, the Philippines and Spain.

An agent has been appointed in Oslo and inquiries are being handled in Sydney from six other countries including the US and Japan.

Executive director of the NSW Enterprise Workshop, Mr Stan Tibbles, said the workshop had never been more crucial.

'Australia clearly needs to foster the development of products that can be sold around the world,' said Mr Tibbles. 'Jobs will follow sales.'

'So the workshop takes participants through all the steps necessary to become successful enterprise managers. It shows them how they can reap the benefits of their ideas.'

'The businesses that have been developed by past participants show what aspiring entrepreneurs can achieve from our program.'

The workshop draws participants from technical and business fields such as engineering, accounting, marketing, science, production, product design, computer science and commerce.

Details of the 1987 NSW Enterprise Workshop can be obtained by telephoning (042) 270707.

P.S.A. NEWS

PSA members who attended the South-Coast AGM were all surprised to see the number of members who turned up. A total of 235 members voted and the 1986 executive were returned by about 25 votes. Congratulations to Ann Meehan and her progressive team who showed that most members will support an executive that works hard all year.

I would like to thank all of our division members who gave their time to turn up and support our candidates on the night.

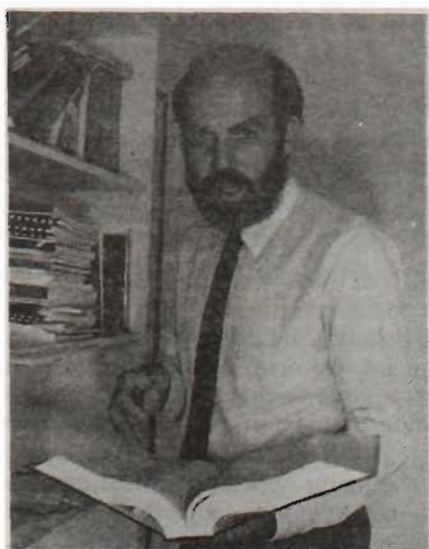
We are trying to rectify the problem of communicating meeting dates, times and so on to members. *Campus News* is one way. Another way may be for members to enquire of management committee members in their area what is happening in the near future instead of waiting to be informed.

Tony Kent
Secretary

FIRST SESSION 1987 FOOD AND BAR SERVICE OPENING HOURS

Cafeteria:	11 am – 8 pm – Monday to Thursday 11 am – 6 pm – Friday
Greenery:	8.45 am – 5 pm – Monday to Thursday 8.45 am – 3 pm – Friday
Takeaway:	8 am – 1.15 pm – Monday to Friday
Hideaway:	10.30 am – 2 pm – Monday to Thursday (coffee lounge)
Hideaway:	Noon – 2 pm – Monday to Thursday
Weigh In:	11 am – 2 pm – Monday to Friday
Dogatorium:	11.30 am – 2 pm – Monday to Friday
Bar:	Noon – 10 pm – Monday to Thursday Noon – 8 pm – Friday
Bistro:	Noon – 2 pm – Monday to Friday (last orders 1.45 pm) 5.30 pm – 10 pm – Monday to Thursday 5.30 pm – 8 pm – Friday (last orders 30 minutes before closing time for Evening Chargrill)

All trading hours are subject to change.



Professor Dennis Calvert



Associate Professor Christine Ewan



Professor Hugh Bradlow

New Professors

Among the newcomers to the University for 1987 are George Dennis Calvert (School of Health Sciences), Christine Ewan (School of Health Sciences) and Hugh Bradlow (Department of Electrical and Computer Engineering).

Professor Calvert was born in 1942 and is married with two children. His educational and professional qualifications are: Bachelor of Medical Science, Otago 1965; Bachelor of Medicine; Bachelor of Surgery 1966; Doctor of Medicine, Otago 1975; Master of Clinical Biochemistry 1976; Member of the Royal Australasian College of Physicians 1970; Fellow of the Royal Australasian College of Physicians 1975; Member of the Royal College of Pathologists (UK) 1975; Fellow of the Royal College of Pathologists of Australasia 1976.

From 1967 to 1973 Professor Calvert held various medical appointments with the Auckland Hospital Board, Auckland Hospital and Queen Elizabeth Hospital, University of Birmingham. In 1973 he was appointed Senior Registrar in Clinical Biochemistry with the West Midlands Regional Health Authority. Since 1976 he has had the academic rank of Reader in the School of Medicine, Flinders University, South Australia, and Senior Medical Specialist, Department of Clinical Biochemistry, Flinders Medical Centre. He is also Director of Technical Services in the School of Medicine at Flinders University.

Professor Calvert has published extensively and has been the recipient of considerable research funds, principally from the National Health and Medical Research Council and the National Heart Foundation. He will continue this vital research at the University, which has responsibility for the administration of the grant. A great coup! Major research interests are Plasma lipoprotein and cholesterol metabolism and Epidemiological studies.

Associate Professor Christine Ewan's qualifications feature the unusual combination of a degree in Medicine from Sydney University (1971) with a Doctorate in Education (1977). She also has a BA majoring in Anthropology (1980).

From 1971 to 1980 Christine Ewan has held a number of medical appointments with Sydney Hospital, Sydney University and the World Health Organisation (WHO) Regional Teacher Training Centre based at the University of New South Wales. Before her appointment to the School of Health Sciences at The University of Wollongong she held the position of Senior Lecturer, School of Medical Education, University of New South Wales.

Her current research interests involve:

- i. a review of medical specialty training in NSW and possible alternatives for training (funded by a grant of \$17,5000 from the NSW Department of Health);
- ii. an investigation into the characteristics of effective

clinical teaching in the medical and allied health professions with a view to development of training packages and programs for clinical teachers (funded by a grant of \$39,750 from the Clive and Vera Ramaciotti Foundations);

- iii. an anthropological study and analysis of the responses of the medical profession to changing community expectations and needs for the delivery of community based health care (funded by faculty research allocation).

Associate Professor Ewan's conjoint appointment with the Illawarra Area Health Service means that she will act as a consultant on Health Promotion, Health Personnel Education, and Primary Health Care.

Professor Bradlow was born in 1951 and is married with two children. He has a Bachelor of Science degree with First Class Honours in 1973 from the University of Cape-town. From 1974 to 77, while holding a Royal Commission for the Exhibition of 1851 Overseas Scholarship, he completed and obtained his D.Phil. in Experimental Nuclear Physics from the University of Oxford.

In 1978 Professor Bradlow was a Control Systems Engineer with Imperial Chemical Industries. From 1979 to 1981 he was a Senior Lecturer in the University of Capetown and in 1981 was appointed Post Office Professor of Electrical Engineering (Digital Systems). He has held visiting appointments as Staff Software Engineer with InteCom Inc. in Texas and as a Visiting Scientist with Amdahl Communication Systems Division in California.

Professor Bradlow has published extensively and has received considerable research funding. His current major research interests include Protocols, Performance, Usage and Management of wide area and local area Computer Networks including the integration of voice and data.

CERTIFICATE PROGRAM FROM AIT

The Division of Energy Technology at the Asian Institute of Technology has been running Master's programs in Energy Planning and Economics for six years and has recently introduced a Master's program in the Rational Use of Energy.

We realise that there are many people who would benefit from these programs who cannot spare the time to follow a Master's course. We have therefore constructed a three-month certificate programme.

The normal AIT scholarship program does not provide scholarships for certificate programs, so students must be directly funded.

Details from the Asian Institute of Technology, GPO Box 2754, Bangkok 10501, Thailand.

General Notices

NSW ENTERPRISE WORKSHOP 1987

WHAT IS THE NSW ENTERPRISE WORKSHOP ABOUT?

Enterprise Workshop is a national program launched by the Federal Government in 1979. The aim of the program is to provide intensive training and actual experience in business planning skills to potential entrepreneurs. The program is unique among most of the academic courses available, as its emphasis is on providing hands-on knowledge and practical achievement. Many highly successful businesses have sprung up from the Workshop. For example, the winner of the 1985 NSW Enterprise Workshop has built up a business with more than \$3 million per annum in export sales. For the first time, the program will be conducted in Wollongong. The University of Wollongong is the major financial sponsor for the Enterprise Workshop in the Illawarra Region.

The program consists of three elements:

Seminar series

Leading business people in Australia are invited to speak at the seminars. They provide management theory, practical advice and case studies from their own experience. The seminars provide a rare insight into actual entrepreneurial development in Australia, the opportunities available and ways to exploit them.

The series is open to the public as well as to participants. Cocktail sessions following the seminars allow those present to meet one another and the speakers, in order to widen their network of business contacts.

Intensive training

A one-week Intensive Training Session is to be held in May. Lecturers provide more detailed theoretical and practical knowledge of how to prepare a business plan for a new project. During this week, participants form into teams and select the projects that will be the subject of their business plans.

Team work

The multi-disciplinary teams of four to six people work in their own time over the last few months of the program. They put in many hours outside their normal work to research, evaluate and prepare financial and business strategies for their projects.

During this period two weekend residencies and two review sessions are held. These help teams plan their time, seek guidance and feedback on their progress and finalise their strategies.

Inventions

Each year individuals and corporations submit their inventions or innovations for use in the workshop. Products submitted have included communication devices, agricultural machinery, computer software packages, electronic instruments, chemical processes and biomedical products.

Each should display these characteristics:

- * **technological advancement**
- * **technical feasibility**
- * **Not yet commercially exploited**
- * **availability for the Workshop**
- * **availability for post-Workshop development**
- * **employment/export potential**
- * **existence of working model or prototype**

The emphasis in the judging of business plans and presentations is placed on the work undertaken to develop the plan and not on the technical merit of the invention.

Who can be involved

Participants are sought at the beginning of each year. Experience or qualification in engineering, accountancy, commerce, marketing, law, business administration, industrial design or science is expected. People who are running

a business or intending to do so generally constitute the majority of participants.

However, the program is also highly applicable to employees of larger companies seeking new business opportunities as part of the corporate strategies, as well as to professional consultants such as marketing consultants, accountants and solicitors who may wish to assist their clients in developing new ventures.

Intense Competition

Although the purpose of the Workshop is primarily educational, a spirit of competition is developed between the teams. Each seeks to produce the most realistic business plan and investment proposal for their inventions.

A panel of judges comprises venture capitalists, entrepreneurs and other leading business people highly successfully in the world of financing and developing new enterprises. The panel assess the teams' written plans based on a wide range of business requirements, including detailed financial plan, market research and corporate structure.

Awards

The team which presents the best business plan based on the stated criteria is presented with an award. The award function is the highlight of the Workshop program. The Workshop sponsors, advisers, managers, speakers, and journalists from the leading financial press are invited to attend the function to announce the winning business plan.

The winning NSW team may then revise its written and oral presentations to present to a national judging panel about one month later. The highlight of this final National Enterprise Workshop function is the presentation of a national award to the best team. In the past years this has been an overseas study tour to visit leading high technology companies in various countries, to assess foreign venture capital practices.

Joining the Workshop

Joining the 1987 Enterprise Workshop may be one of the most significant moves you could make in your life. Regardless of the results in the workshop competition, every participant may well be a winner in real life.

The first seminar of the Enterprise Workshop will be held on Saturday, March 7 at 2.30 pm in the South Wing Lecture Theatre of the Engineering/Science Building at the University. The Lord Mayor, Alderman Frank Arkell, will officially open the Workshop. Everyone is cordially invited to the first seminar.

Further information from Victor Wan, ext 2707.

ASSISTANCE WITH READING AND WRITING FOR UNIVERSITY PURPOSES AND ENGLISH LANGUAGE CLASSES FOR OVERSEAS STUDENTS

Most assessment of students at university is by way of their written assignments — essays, tutorial and practical reports, theses and so on. Often sustaining argument and achieving an appropriate level of written expression can be difficult, not only for the beginning tertiary student, but also for students who have been at university for some years. Often students experience difficulty in mastering the processes involved in writing academic essays. Mrs Kim Draisma has been appointed to co-ordinate staff and teach in this area.

Overseas students, both undergraduate and postgraduate, can receive English-language assistance in small groups and on a one-to-one basis. Conversation classes in English are provided on an appointment basis by contacting The Centre for Literacy, Language and Cognition.

Free assistance is available through the Centre, Building 22, Room 105A. Phone 270973.

Contact Mrs Kim Draisma, Lecturer and Co-ordinator or Miss Anne Duncan, Secretary, Centre for Literacy.

PALS CIRCULATION SYSTEM AND ON-LINE CATALOGUE INSTALLED IN LIBRARY

The PALS system was originally developed at Mankato State University in Minnesota. It was acquired by Sperry in 1983 and is now a fully supported product.

Considerable difficulties in adapting and installing the software to suit local conditions have been overcome by a dedicated team of Computer Centre and Library staff members.

The PALS circulation system (CIRC) will permit loans to be processed quickly and accurately without the need to complete loan cards. All a borrower needs to do is present a current ID card after locating the wanted Library item using the new PALS OPAC (on-line public access catalogue).

The OPAC has powerful search capabilities, allowing a much greater range of access points to Library holdings. It will be possible for borrowers to place their own reservations and check on their own loans via the OPAC. All terminals on campus connected to the UNIVAC can access the PALS OPAC.

Demonstrations of the more interesting features of the system will be arranged at a later date. However, anyone interested in learning the use of OPAC should contact the Reference staff.

The installation of PALS CIRC and OPAC is the first step in developing a totally integrated Library system. Acquisitions, serials and catalogue edit modules will be installed during the next eighteen months to provide a futuristic and streamlined system which will rival any Library service in the country.

ARGS SEMINAR – STRATEGIES FOR SUCCESS

Members of several ARGS sub-committee and the Deputy Chairman of the ARGC recently participated in a seminar at the University of New South Wales titled 'Strategies for Success'.

Notes taken at the seminar are available from Annette Read, Executive Officer, Office of Research and Post-graduate Studies, ext 3396.

Concerts, Exhibitions and Entertainment

"ALLURE OF LACE"

An afternoon of interest to all who delight in superb craftsmanship.

The North Shore Cavalcade Group Lace Authority presents a History of Lace told through an exhibition and parade of the Group's unique collection of laces dating from the seventeenth century. See exquisite heirloom shawls, pelerines, collars, fascinators, parasols ...

Visitors are invited to bring along family treasures for expert identification and appraisal.

Musical entertainment by The Glennifer Quartet.

Date: Saturday March 14 at 2.15 pm

Venue: Town Hall, Wollongong

Tickets: \$3 and \$2 (concession) available at the Town Hall Booking Officer or at the door on the day.

Inquiries: Tel. 289354.

Joint Organisers: Wollongong Soroptimist Club, Wollongong Chasalon Auxiliary.

This is also a Senior Citizens Week activity.



At a launching of 'The Eye of Reason' (see page 1, Campus News of February 24) on February 23, the Vice-Chancellor Professor Ken McKinnon is seen with the book's co-authors, Dr Margaret Campbell and Colonel George Johnston

SYMPHONY ORCHESTRA CONCERTS

The City of Wollongong Symphony Orchestra has released its brochure of concerts for 1987. Three concerts are to be presented on Saturdays April 4, June 13 and November 28, in the Wollongong Town Hall. The orchestra's music director, John Wayne Dixon, will conduct the April and November concerts, while Andrew Schultz will guest-conduct the June event. Mr Schultz has been recently appointed to the music staff of the School of Creative Arts, and will be making his first appearance in Wollongong as a conductor.

Among the soloists at the concerts will be Australian-born pianist Lisa Moore, who has now appeared as a concert artist in England, France, Thailand and the United States. She appeared to great acclaim in Wollongong last year, and has been engaged by the City of Wollongong Symphony Orchestra to play at the November 28 concert, when she will join the orchestra for a performance of the Piano Concert No. 1 by Brahms.

Season brochures, showing all details, are available at all library branches in the Wollongong and Shellharbour districts, at record shops in these areas and in Bowral, at the University library and Town Hall.

Season tickets are available from Wilson's Record Bar (Gateway shop) and Ring's Music World, Warrawong Centre and Warilla Grove.

Inquiries: 297518 or 270586.

INDUSTRIAL AND MARITIME PAINTINGS AND SCULPTURE

Graham Gallery invites you to an exhibition of industrial and maritime paintings and sculpture from March 6 – 29.

Leading Australian and local artists include Dennis Adams, Brian McCauley, Fred Bates, Ted Hall, Bob Baker, Greg Frawley, Robert Parr, Howard Mitchell, Peter Krak, Gino Sanguineti, Peter Turner.

Preview Friday March 6, 5.30 to 7 pm.

Mr Jerry Ellis, General Manager, BHP Port Kembla Steelworks will officially open the exhibition at 6 pm at Graham Gallery, 135 Cordeaux Road, Kembla Heights.

Research Funds

The following sources of research funds are now available to members of academic staff. Further information including application forms may be obtained from Annette Read (ext 3386) or Ian Strahan (ext 3079). Intending applicants are reminded that all research applications must be forwarded through the Office of Research and Postgraduate Studies.

RESEARCH IN PRIMARY PRODUCTION – RURAL CREDITS DEVELOPMENT FUND

The Reserve Bank of Australia has invited applications for the support of research directed to the promotion of primary production in Australia. Plant, animal and soil sciences, economics and management are all eligible areas. Applications may be made for:

Grants (up to \$150,000)	University closing dates
Major grants (up to \$400,000)	March 16
Research Fellowships (agriculture)	April 20

AUSTRALIAN RESEARCH GRANTS SCHEME – 1988 GRANTS

Application forms and information booklets are now available. Projects may be in any discipline except medicine and dentistry.

Closing date with the University is March 18.

CSIRO/UNIVERSITY OF WOLLONGONG COLLABORATIVE SCHEME

Applications are invited for funding in the 1987/88 financial year for research projects involving collaboration between researchers in CSIRO and the University.

Grants will be made for one year commencing from July 1987.

Closing date with the University is March 31.

AUSTRALIAN BIOLOGICAL RESOURCES STUDY

The Australian Biological Resources Study supports the collection, description and classification of Australian plants and animals, and studies of their distribution.

The limited funding available will be directed toward current programs including publication of the Flora of Australia, the Fauna of Australia and the Zoological Catalogue of Australia, as well as the development of the Australian Biogeographic Information System.

Further details available from the Office of Research and Postgraduate Studies.

Closing date with the University is April 3.

ROAD SAFETY RESEARCH GRANTS

The Federal Office of Road Safety has invited applications for a limited number of grants for research in fields related to road safety in 1986/87. It is envisaged that grants would facilitate or extend research work already under way or contemplated and would involve either small or relatively short-term projects.

AUSTRALIA COUNCIL FUNDING OPPORTUNITIES

The Literature, Community Arts and Visual Arts Boards or the Australia Council are currently advertising programs of support for writers and artists.

Please contact the Office of Research and Postgraduate Studies for further details.

RESEARCH GRANTS IN ASTRONOMY

Up to \$20,000 (US) will be available in 1987 to one or more individuals or groups to be used for the support of international observational astronomy with the emphasis on long term, visits and the development of close working relationships with astronomers in other countries.

Closing date with the University is March 23.

BEHAVIOURAL RESEARCH CONSULTANTS – TRAFFIC AUTHORITY

The Traffic Authority of NSW has invited academics, postgraduates and graduates interested in research into the human aspects of current and future traffic management and safety to register as consultants.

Curriculum vitae detailing academic background, areas of interest, work experience and research experience should be submitted marked 'Consultant Registration' to: Manager, Behaviour Section, Traffic Authority of NSW, PO Box 110, Rosebery, NSW 2018.

MARINE SCIENCES AND TECHNOLOGIES GRANTS 1988

Applications are invited from individuals or research teams for grants in support of research projects in Marine Science and Technology. Information regarding the priorities for grants is available from the Office for Research and Postgraduate Studies.

Closing date with the University is March 20.

EARTHWATCH—GRANTS FOR FIELD RESEARCH IN SCIENCE OR HUMANITIES

Applications are invited for funds to support research in the humanities or sciences. Researchers at the post-doctoral level are eligible to apply. Research teams must include qualified volunteers from EARTHWATCH.

Applications may be submitted through the Office of Research and Postgraduate Studies at any time.

Scholarships and Prizes

HUNGARIAN GOVERNMENT SCHOLARSHIPS

A limited number of scholarships are available for either postgraduate study in various fields or advanced studies in Music, Art or Dance. The Scholarships cover periods of three to twelve months in Hungarian educational institutions for the 1987/88 academic year.

Preference is given to candidates proposing to study for 12 months.

Benefits:

- living allowance of 4000 forints per month
- tuition fees
- medical, dental and hospital expenses
- internal travel
- suitable accommodation provided

Note: travel to and from Hungary is not provided.

Further information and application forms are available from: The Secretary, Department of Education (Hungarian Government Scholarships), PO Box 826, Woden ACT 2606.

Information about Hungarian Educational Institutions can be found in publications such as 'The World of Learning'.

Closing date March 20.

friends Campus Community Interface

NEW MEETING DATES

The following new meeting dates have been decided on by the meeting of the Graduates Group held on February 11.

New dates	Old dates to be cancelled
1 April	8 April
3 June	10 June
5 August	12 August
4 November	11 November

All meetings are held in the Northern Lounge of the Union.

Could you also note the change of date for the Annual General Meeting and the Graduation Eve Champagne Reception from Tuesday May 12 to Monday May 11.

PROGRAM OF EVENTS AND MEETINGS

March:

Thursday 12 – Graduates Welcome and Bush Dance for students.

Friday 13 – Community Involvement Committee, 5.30 pm, Old Town Hall Committee Room.

SENIOR CITIZENS' DAY AT THE UNIVERSITY

This special day is sponsored by the University of Wollongong and the National Australia Bank.

Date: Friday March 20.

Senior citizens have been invited to come and enjoy a stimulating and thought-provoking day at Wollongong's beautiful campus.

They can catch the Keiraville bus service at the Old Post Office in Crown Street (near Town Hall) at 9 am or 9.30 am and alight at the University. Return bus service also available.

Tickets \$1 (includes free bus voucher and meal) are available from Town Hall Booking office.

Venue: University Union Hall.

Program:

- 10 am Official opening
- 10.10 am 'The University of the Third Age' an exciting new concept in Adult Education which is being considered for introduction to Wollongong.
Speaker: Barry Russell of the University of Wollongong.
- 10.40 am Morning Tea
- 11.10 am 'Grandparents and their Grandchildren' an address by Stan Duncan of the NSW Council on the Aging.
- 11.30 am 'The older person's garden' an illustrated address by Mr Dean Miller, Director, Parks and Recreation Dept, Wollongong City Council.
- 12.15 pm 'Money Management in Retirement' A speaker from our sponsors – the National Australia Bank.
- 12.30 pm Lunch
- 1.30 pm The Great Debate: 'That there should be no compulsory retiring age'. Debating Teams: Nowra Toastmasters versus International Training in Communication.
- 2.15 pm Concert – Courtesy of the University of Wollongong Union.
- 3.00 pm Close.

Display: Dr Winifred Mitchell will conduct a display of local history material and will talk to people about the Wollongong Oral History Project.

Enquiries: Anyone interested may call Giles Pickford on (042) 270073.

EEO news....

This is my first foray into this column and I would like to introduce myself. I am Peg MacLeod and I feel very honoured to have been selected as Kathy Rozmeta's replacement while she is on maternity leave.

I have recently returned to Australia after spending the last nine years in my homeland, Canada, completing my graduate studies and working as a consultant in a variety



Peg MacLeod

of organisational/industrial psychology areas.

My first week at The University of Wollongong has been spent familiarising myself with policies, procedures and plans. I am impressed with the quantity and quality of work that has been produced in this unit to date, and will do my utmost to continue in the results-oriented fashion that has been established here.

The short time I was able to spend with Kathy before her departure was enough to confirm to both of us that we have remarkably similar philosophies and that our aims, objectives and methods are compatible. Therefore, I think you may be assured that with the capable resources the EEO team has in Faye Franklin and Janet Sturman, this office will continue to function much the same as it has in the recent past.

With all of us in the University community working together on our commitment to developing people's potential and giving everyone 'a fair go', we can anticipate a productive and satisfying 1987.

I would like to thank all those who have made me so welcome this past week and extend to those of you on campus whom I have not yet met a sincere invitation to drop by whenever possible.

Peg MacLeod
ext 3917

CONCERT IN BALMAIN

The Degani Ensemble will give a concert in the Campbell Street Presbyterian Church, Balmain, on Sunday March 8 at 3 pm.

Members of the ensemble are Marina Marsden (violin), Justine Marsden (viola) and David Wickham (cello).

The program will include music by Bach/Mozart; Beethoven; Handel, Schubert, Massenet and Vitali.

The concert is under the auspices of the Australian Musicians Academy. Further details from Abe Segal, ext 3518, in the Department of Physics.



Staff Roundup

STAFF CHANGES

NEW STARTERS

Ms B. Symons, Secretary, Sociology
 Mr R. Cook, Maintenance Assistant, Buildings and Grounds
 Mr S. Buckley, Garden Labourer, Buildings and Grounds
 Mrs D. Grove, Office Assistant, Student Services
 Mr P. Reinfelds, Laboratory Assistant, Physics
 Mrs J.E. Counsell, Accommodation Officer, Student Services
 Miss A.J. Inglis, Typist/Office Assistant, Buildings and Grounds
 Mrs J.J. Richter, Programmer, Computer Centre
 Ms S. Mercado, Research Assistant, Accountancy and Legal Studies
 Mrs S. Chapman, Manager, Personnel Services
 Dr. K.F. King, Lecturer, Industrial and Administrative Studies
 Mr A. Jurd, Carpenter/Joiner, Buildings and Grounds
 Mr P. Sarakiniotis, Technical Officer, Chemistry
 Mr W. Pike, Supervisor Patrol, Buildings and Grounds
 Professor D.A. Griffiths, Professor of Statistics, Mathematics
 Mr S.J. Meyrick, Senior Research Fellow, Centre for Transport Policy Analysis
 Mr M.D.J. Hayward, Technical Officer, Computing Science
 Mr W. Janes, Lecturer, Health Sciences
 Miss J.K. Duggan, Lecturer, Health Sciences
 Ms M.L. Gerry, Lecturer, Health Sciences
 Mrs J.J. Fares, Lecturer, Health Sciences
 Mrs F.M.S. Campbell, Lecturer, Health Sciences
 Mr W.H. O'Neill, Lecturer, Health Sciences
 Mr H.G. Pickering, Groundperson, Buildings and Grounds
 Mr D.R. Webb, Apprentice Carpenter/Joiner, Buildings and Grounds
 Miss L.M. Miller, Research Assistance, Mathematics
 Mrs J.M. Hodge, Incremental Clerk, Student Services
 Professor H.S. Bradlow, Professor, Electrical and Computer Engineering
 Mr S. Ghahreman, Lecturer, Mathematics
 Mrs S. McKechnie, Secretary, Management
 Mr L.D. Cung, Professional Officer, Electrical and Computer Engineering
 Mr R.W. Sampson, Administrative Officer, Personnel Services
 Dr T.P. Van Ravenstein, Temporary Research Associate, Mathematics
 Professor H.M. Garnett, Professor, Biology
 Dr. N.F. Smyth, Lecturer, Mathematics
 Ms A.L. O'Neill, Lecturer, Geography
 Dr. K.L. Neander, Lecturer, Philosophy
 Mr M. Zanko, Lecturer, Industrial and Administrative Studies

Dr. L.M. Head, Lecturer, Geography
 Dr R.T. Harland, Lecturer, English
 Dr A. Cranny-Francis, Lecturer, English
 Miss F.L. Leen, Research Assistant, Chemistry
 Miss D. Brownlee, Computer Trainee, Computer Centre
 Ms D. Davidson, Student Tutor, Aboriginal Education Unit

Mr J.D. Standfield, Laboratory Assistant, Health Sciences
 Mrs M.G. Murada, Secretary, Friends
 Dr P.E. Pattison, Lecturer, Psychology
 Ms K.H. Garrety, Research Assistant, Health Sciences
 Mr P. Standish, Research Fellow, Civil and Mining Engineering
 Associate Professor F.S. Pyke, Associate Professor, Health Sciences
 Mr G.J. Takacs, Teaching Fellow, Physics
 Mrs R. Griffith, Research Assistant, Chemistry
 Ms A. Read, Executive Officer, Research and Postgraduate Studies
 Ms S. Dufy, Research Assistant, Biology
 Mr D.R. Blackall, Resources Officer, Aboriginal Education Unit
 Ms C. Halloran, Head, Halls of Residence
 Mr N. Plavsic, Research Assistant, Computing Science
 Ms T. Carse, Word Processor Operator, Mathematics
 Mr R.J. Davey, Debtors Clerk, Financial Services
 Ms M.H. Macleod, EEO Co-ordinator, Equal Employment Opportunity

TRANSFERS AND PROMOTIONS

Ms J. Hickey, Incremental Clerk, Personnel Services
 Ms B. Baader, Secretary, European Languages
 Mr N. Ballardie, Graduate Assistant, Academic Services
 Miss P.J. Dear, Office Assistant, Business Services
 Mrs V.J. Whitehouse, Administrative Assistant, Student Services
 Ms M. Cooper, Graduate Assistant, Academic Services
 Mrs M. Evans, Graduate Assistant, Student Services
 Dr. E.A. Bryant, Senior Lecturer, Geography
 Miss M.C. Martin, Lecturer, Health Sciences
 Mr F. Yuen, Senior Lecturer, Health Sciences
 Mr I. Reinecke, Senior Lecturer, Science and Technology Studies/Bachelor of Information Technology
 Mr R.J. Dunn, Lecturer, Philosophy
 Mrs R.M. Muston, Lecturer, Biology
 Mrs J.E. Ross, Senior Librarian, Library
 Mr P.W. Wypych, Lecturer, Mechanical Engineering
 Dr L. Jayamanne, Lecturer, English
 Mr R.W. Hook, Lecturer, Creative Arts
 Mrs P. Kendall, Secretary, Mathematics
 Dr M.P. Downton, Research Associate, Deputy Vice-Chancellor's Unit
 Ms D. White, Incremental Clerk, Student Services

Advertisements

FOR SALE

Wollongong: 1 b/r home unit, recently renovated, fully furnished, built-in wardrobes, with car space. 5 min. walk to Crown Street Mall. \$47,950. Ph. Ross, ext 3869 or a/h 261771.

Contemporary western red cedar 3-bedroom house on headland clifftop overlooking ocean, coastline and escarpment bushland. Outdoor living area, minutes to beach, railway station, primary school and bus at door. Open to offers before auction on March 7. Ring Ian Reinecke on ext 3606 or (042) 674898.