



13 May 1986

## FIFTH UNIVERSITY FELLOWSHIP IS AWARDED TO ROBERT PEARSON AO

At the Graduation Ceremonies held last Wednesday, Thursday and Friday there was reached a further important landmark in the University's history. Appointed a Fellow of the University was Robert Pearson AO. His Fellowship is the fifth to be awarded.

The four earlier Fellowships were awarded last year to mark the University's attaining its tenth anniversary. The new Fellow, Robert Pearson AO, is one of Wollongong's foremost citizens and one to whom the University is indebted for, inter alia, his skill and help during the process of amalgamation of the former Wollongong Institute of Education and the University.

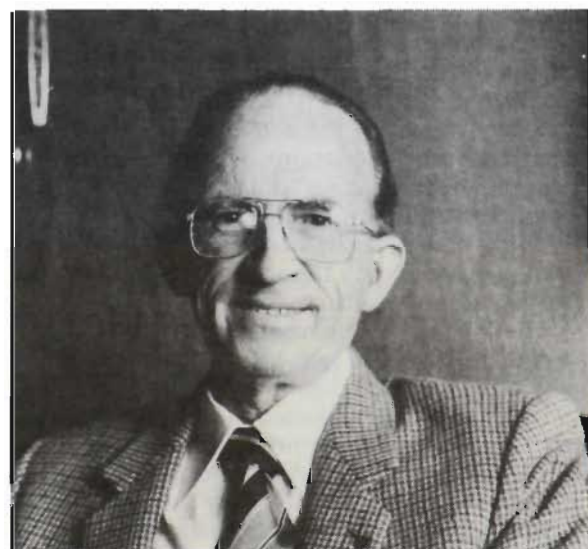
The citation preceding the ceremony was made by Deputy Vice-Chancellor Professor Peter Rousch. What follows is a lightly edited version of his address.

Robert John Butler-Pearson was born in Melbourne in 1918. He was a student at Melbourne High School and subsequently completed his education in Metallurgical Engineering at the Melbourne Technical College.

In December 1937 Bob Pearson joined the staff of Metal Manufactures, Port Kembla. He became Foundry Superintendent in 1943 and eventually, 20 years later, made his way to the General Managership of the Port Kembla works. From 1976 until his retirement in 1980 he was Group General Manager at Head Office in Sydney.

His significant contributions to the development of the metallurgical industry in Australia resulted in Bob Pearson being awarded the Fellowship of the Institution of Metallurgists and his becoming Chairman of its Australian Region Committee. From 1965 to 1966 he was Federal President of the Australasian Institute of Metals.

Despite his magnificent progress in his chosen career, Bob Pearson was to make an equally significant contribution to the development of his adopted Wollongong. From 1944-46 he was a Councillor of the Shire of Central Illawarra, and from 1946-47 an Alderman of the City of Greater



*New University Fellow: Mr Robert Pearson*

Wollongong. He undertook the task of developing the South Coast Area Scout Association and today is still chairman of that body. He is a past president of the Wollongong YMCA and of the South Coast Centre of the New South Wales Chamber of Manufactures.

It has been in his association with the educational institutions of the region that Bob Pearson has become so well known to the University. When the University was still a college of the University of New South Wales he became a member of its Advisory Council, thus helping to guide its future destiny, and upon its incorporation as a university was made a member of its first Council. He also held the position of Chairman of Council of the former Wollongong Institute of Education, a position he maintained until the amalgamation of the Institute with the University in 1982.

The University owes Bob Pearson a great debt for his assistance and skill in aiding the amalgamation of two institutions that had pursued separate endeavours over so many years.

Bob Pearson's endeavours on behalf of the community have not gone unremarked. In 1977 he was awarded the Queen's Silver Jubilee Medal, and this year he was honoured by the Australian Government with the award of the Order of Australia. His services to the local College of Technical and Further Education were recognised by the NSW Government in 1981 when it named its new wing the R.J. Pearson Building.

### CAMPUS NEWS HAS NO WRITING STAFF

More and more material is arriving at *Campus News* in note form, to be written for publication. This sort of material can be handled only to a very limited extent. We have an editor, but we don't have a staff of writers. Contributions for *Campus News* will in future — and we are sorry to have to say this — be regarded as too late for publication unless they are received by us ready for sub-editing and by not later than noon on Monday.

# 'UNIVERSITIES SHOULD BE MAKING THEMSELVES MORE ACCESSIBLE'

The annual general meeting of the Friends of the University was held last Tuesday, May 6.

In his report, the Chairman, Professor Ken McKinnon, said:

It is useful sometimes to go back to origins and remember the basic reason for the commencement of a new endeavour. The concept of the Friends of the University was founded on a discussion held in January 1980 with Mr Robert Hawke (then President of the ACTU) and Sir Roderick Carnegie of CRA Ltd.

In answer to a question from the then Vice-Chancellor as to what universities should be doing to help themselves in these stringent times, the reply from our two eminent advisers was that "Universities should be making themselves more accessible and more useful."

Out of that statement the Friends of the University and Uniadvice were created. The accessibility of the University to the public is the main area of work of the Friends and our usefulness to the community is the main area of work of Uniadvice.

A by-product of the activities generated by the Friends is philanthropic donations, and in the case of Uniadvice, turnover. (The success of the latter is outlined in the Report of the Chairman of Uniadvice.)

In the area of assistance there has been a steady growth in the generosity of the community which can be seen in the diagrams opposite covering the years 1980 to 1985.

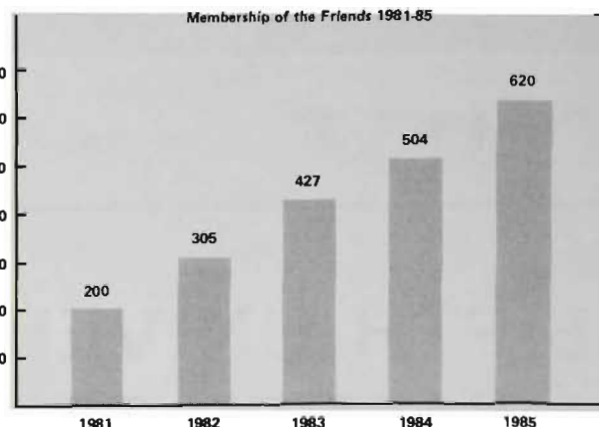
Turning now to the highlights of the 1985 year, our fifth year of operation, I am happy to report that steady progress has been made on all fronts.

I am particularly pleased with the work of the Bequests and Benefactions Committee in negotiating the largest gift ever made to the University through the Friends. I refer to the unique Cochrane Papua New Guinea Archive.

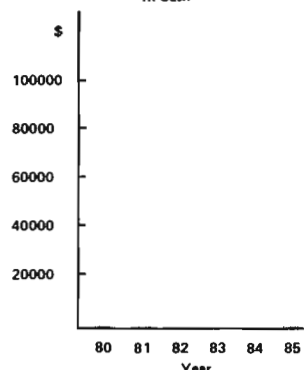
It is also pleasing to see Uniadvice now earning enough to employ a manager full-time. Mr Sophios has done much to expand this service to the community and the University.

The University was grateful to receive from the Graduates Group its first substantial gift on our tenth anniversary, the Library being the beneficiary in this case.

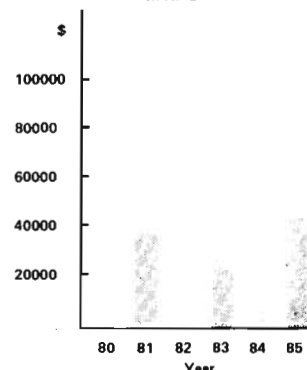
I am pleased to see the Community Involvement Committee continuing to expand its fields of interest and I congratulate the Committee on helping to create, with the assistance of the Australian Development Assistance Bureau, the new Illawarra Committee for Overseas Students. Dr Sultan Aly is to be particularly congratulated in this respect.



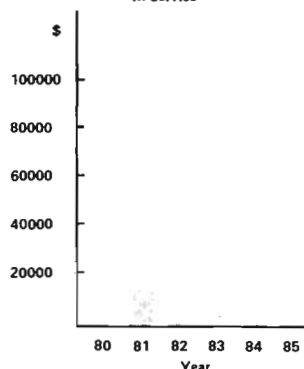
Friends Donations Each Year 1980 to 1985 In Cash



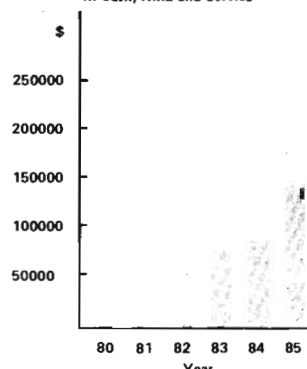
Friends Donations Each Year 1980 to 1985 In Kind



Friends Donations Each Year 1980 to 1985 In Service



Friends Donations Each Year 1980 to 1985 In Cash, Kind and Service



## General Notices

### SESSION 1 1986 EXAMINATIONS ID CARDS AND PARKING

Session 1 examinations will be conducted over a three-week period from Tuesday, June 10 to Friday, June 27. Advanced Education Courses examinations will begin on June 10 and Faculty Courses examinations begin on June 16. Final Examination Timetable for Session 1 will be released on Monday May 19. Examinations will be held in the Union Hall, Common Room (Union), Sports Hall and other rooms normally used for examinations in the past.

Recently the University revised its examinations procedures and decided that in future entry to examination rooms

will be by Identification Card only. Students will be expected to show their ID Cards at the door of an examination room and then leave them on their desks together with the completed and signed attendance form. The ID Cards will be returned to students after the attendance form has been collected by the Examination Supervisor.

In view of the current parking situation students should allow themselves plenty of time before the commencement of an examination to find a parking space and get to the examination room in time. Students who have to sit for examinations in the Sports Hall should note that the car park south of the Sports Hall (coal wash car park) will not be available for parking during Session 1 examinations because it will be under re-construction.

Remember to get to the examination on time and bring your ID card along with you.

K.E. Baumber,  
University Secretary.





*The Illawarra Committee for Overseas Students*

## ICOS HOLD CULTURAL NIGHT

The Illawarra Committee for overseas students (ICOS) held a highly successful Cultural Night in the Union Hall Friday May 2.

The hall was booked out by overseas students, their friends, members of the Wollongong community and visiting diplomats.

Distinguished guests included the Lord Mayor of Wollongong, Ald. Frank Arkell MP, His Excellency August Marpaung, the Indonesian Ambassador, His Excellency Dzulrifli Bahari the Malaysian Consul General and Professor McKinnon, Vice-Chancellor of the University of Wollongong.

During his address the chairman of ICOS, Dr Sultan Aly, stressed his committee's goal of overcoming the loneliness so often experienced by overseas students, and called on the University to do something to alleviate the shortage of student accommodation in Wollongong.

Highlight of the evening was undoubtedly the performances by the Asian and Pacific Islands dances performed by local groups.

These included a Malaysian Candle Dance, an ancient Chinese dance by Miss Annie Ng; traditional Indonesian Dance 'Kebyar Duduk'; and a tour de force of dances from all over the Pacific by the very popular Samoan Polynesian Club.

The Chinese Students Association also provided a film on modern China.

The evening was made even more memorable by an array of Asian food expertly prepared by the University Union.

All agreed that ICOS had done a great service to foster international understanding and that another Cultural Night should be held in 1987.

The assistance of the Australian Development Assistance Bureau is gratefully acknowledged.

## AUDIT OFFICE VISITOR

A representative from the Australian audit office will be visiting the campus on Monday May 26 to talk to final-year accountancy students.

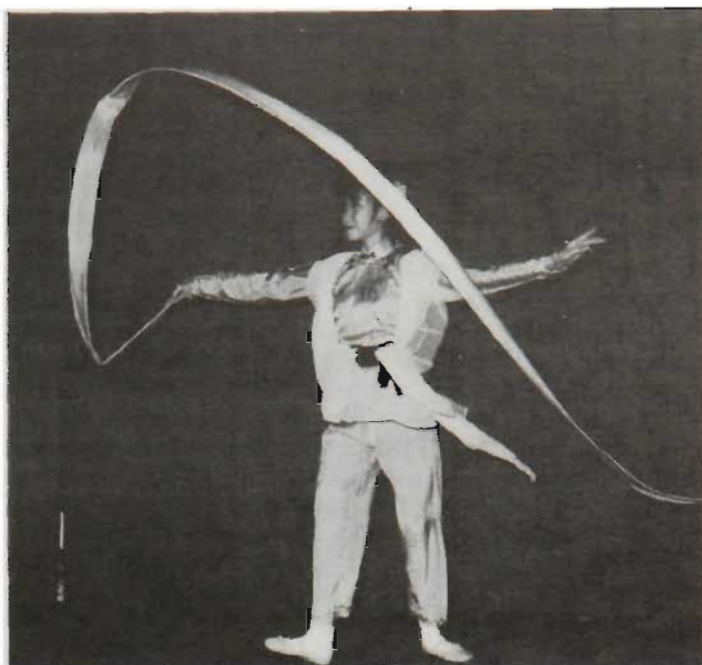
All interested students should register for an appointment at the counselling centre, by Wednesday May 21.

## SUB-COMMITTEE ON SPECIES — SPECIFIC ISSUES

This sub-committee has been established to examine issues related to the use of specific animals in research and, where appropriate, to recommend additional guidelines on the use of these animals.

It has chosen initially to examine the following issues: **AUSTRALIAN NATIVE MAMMALS** - use in biomedical research

— Suitability as experimental animals (including scientific,



*Performing her Candle Dance: Student Miss Annie Ng*

welfare, ethical and conservation issues)

- sources
- housing and caging
- nutrition
- anaesthetic, analgesic and nursing requirements.

The AEEC of the NH & MRC seeks input from interested people on this issue.

Submissions and comments should be forwarded to National Health & Medical Research Council, PO Box 100, Woden ACT 2606. Attention: Mr M. Garvan by May 31.

## AGRICULTURAL RESEARCH & EXTENSION INVENTORY

The Department of Primary Industry has provided a copy of the Standing Committee on Agriculture's Agricultural Research and Extension Inventory for the year 1984-85.

This is available for consultation in the Research Office.

## SPORTS ASSOCIATION AGM

The annual general meeting of the Sports Association will be held on Thursday May 22 at 5.30 pm in the Sports Pavilion. Copies of the Annual Report for 1985 may be obtained from the Sports Association Office in due course.

## BRITISH GUIDE TO GRADUATE STUDY

Anyone wishing to consult the *British Universities Guide to Graduate Study 1986-87* please contact Marie Lewis in Student Administration, ext 3924.

## AUSTRALIAN SPORTS COMMISSION

The Commission invites the submission of proposals to research the project topic "The Development of a Behavioural Evaluation Instrument to measure the Effectiveness of the National Coaching Accreditation Scheme" under the Australian Sports Commission's Applied Sports Research Program (ASRP).

This project was included in the initial distribution of project briefs on 20 October 1985. However, following concerns expressed by various people about the imprecision of the stated desired outcomes, the ASRP Review Committee in conjunction with the Australian Coaching Council's Development Officer decided to revise the tender brief document and re-tender the project.

Applications close July 4.



## UNIVERSITY NOW AN APPROVED RESEARCH INSTITUTE FOR 150 PER CENT TAX REBATE SCHEME FOR INDUSTRIAL R & D

The University has been formally advised that it has been classified as an Approved Research Institute in relation to the 150 per cent Tax Rebate Scheme for Industrial Research and Development.

In general the scheme applies only where firms spend more than \$50,000 per annum on R&D. However, where expenditure does not reach this figure, firms may contract the work to an Approved Research Institute and gain the maximum tax rebate. It is possible that many smaller firms lacking R & D capacity, or firms lacking sophisticated equipment or skilled staff, may want to place their R & D with the University and gain the taxation relief.

Details of the scheme have been given in the past but are now repeated for the information of readers.

The Commonwealth Government's 150 per cent tax deduction scheme for research and development is aimed at not only helping this country to regain an internationally competitive edge, but also helping to bridge the gap between the business community and research institutions.

The Scheme will operate for six years from July 1985.

The concession is allowable for eligible expenditure from 1 July 1985. There are strict eligibility requirements.

1. The first requirement allows the concession only to incorporated companies, not to individuals, partnerships or trusts.

2. The second is registration of an intention to conduct eligible R&D. Companies wishing to claim in this financial year should register with the Australian Industrial Research and Development Incentives Board (AIRDIB).

3. The third is that the R&D must be conducted in Australia.

4. Fourthly, the concession will only apply to activities not otherwise directly supported by government schemes such as AIRDIS or NERDDP.

Expenditure threshold:

An important factor is the threshold of expenditure. At over \$50,000 per annum, the company receives the full 150 per cent tax benefit. Expenditure below \$50,000 but over \$20,000 attracts a lesser concession. A graduated scale of deductibility is available for R&D expenditure between these two figures.

The threshold does not apply where work is undertaken on a contractual basis by an Approved Research Institute. A company spending, say, \$5,000, \$10,000 or \$15,000 on

contracted work can claim all of that at 150 per cent under this scheme.

Eligible expenditure:

Wages, salaries and other labour costs directly associated with R&D work and other current expenditure exclusively for R&D activities will be included, as will payments to contractors for use of specialised facilities.

Expenditure on buildings wholly attributable to R&D will continue to be depreciated at 100 per cent over three years, as at present.

### The Definition of R&D

R&D means systematic investigation or experimentation involving innovation or technical risk, the outcome of which is new knowledge with or without a specific practical application or new or improved materials, products, devices, processes or services.

Its three elements are:

1. **Basic Research** — experimental or theoretical work undertaken primarily to acquire a new knowledge without any particular application or use in view.
2. **Applied Research** — work undertaken for the advancement of knowledge with a specific practical application in view.
3. **Experimental Development** — systematic work using the results of basic or applied research for the purpose of creating new or improving existing materials, devices, products, processes or services.

Some additional activities are eligible where these are directly in support of basic research, applied research or experimental development. These include industrial design, engineering design, production engineering, operations research, mathematical modelling and analysis, and psychological research.

Also included is the development of computer software which is intended for multiple sale to multiple clients, but not routine computer programming or in-house computer software development which is not otherwise part of basic research, applied research or experimental development.

## 1986 ELECTIONS TO FELLOWSHIP OF AUSTRALIAN ACADEMY OF SCIENCE

Ten scientists were on May 1 elected Fellows of the Australian Academy of Science. The distinction of Fellowship of the Academy is reserved for scientists whose research is judged to be of the highest standard.

## NETBALL UNI TEAM LOOKS FOR \$4000 TO HELP IT GET TO HOBART FOR NATIONAL CHAMPIONSHIPS

University netball coach Julie Steele with student players



Australian university netball titleholders, Wollongong, could miss out on the national championships in Hobart because of a lack of funds.

Julie Steele is coach of the university team which won the national title last year and is appealing for sponsors to help the team get to Hobart, after BHP turned down a request for sponsorship.

The girls need more than \$4000 to cover expenses for the trip, but BHP has declined to sponsor the team after Steele sent a letter outlining their plight.

A lecturer in health science, Steele said that while BHP is interested in backing the major sports such as soccer, league and basketball, it is not in netball.

"This is disappointing when you consider there are more than half a million registered players in Australia and many more who just play for fun," Julie said.

The ten girls in the squad share their time between studying, training and fund-raising ventures such as lamination drives.

Julie declares they will get to Hobart, one way or another, but if they get sponsors they can devote more time to training.

Wollongong won last year's title, played in Canberra, beating Melbourne 36-21 in the final with six of the players being selected for the Australian team.



The election took place at the Academy's Annual General Meeting in Canberra.

Below are the names of the new Fellows:

Dr J.Mc.K. Adams, Head, Molecular Biology Unit, The Walter & Eliza Hall Institute of Medical Research, Melbourne.

Dr S. Cory, Principal Research Fellow, Molecular Biology Unit, The Walter & Eliza Hall Institute of Medical Research.

Professor J.H. Carver, Director, Research School of Physical Sciences, Australian National University, Canberra.

Professor R.J. Hunter, Associate Professor in Physical Chemistry, Department of Physical Chemistry, School of Chemistry, University of Sydney.

Dr L.A.S. Johnson, Director, Royal Botanic Gardens, Sydney.

Professor A.G.R. McIntosh, Associate Professor, School of Mathematics & Physics, Macquarie University, NSW.

Professor D.B. Melrose, Professor of Theoretical Physics, School of Physics, University of Sydney.

Dr C.H. Tyndale-Biscoe, Chief Research Scientist, Division of Wildlife & Rangelands Research, CSIRO.

Professor E. Weigold, Professor of Physics, School of Physical Sciences, Flinders University, South Australia.

Professor J.A. Young, Professor of Physiology, Department of Physiology, University of Sydney.



*John Eveleigh's three-quarter-length painting of the University Chancellor, Mr Justice Hope*

## PORTRAIT OF CHANCELLOR HUNG IN SUPREME COURT GALLERY

Mahlab Law Week (29 April to May 9) included an art exhibition organised by the Law Society of NSW. Consisting of some 30 paintings and drawings selected from 150 submissions by Chandler Coventry and Barry Pearce of the Art Gallery of NSW, all had a legal theme or association. This public exhibition was held in the foyer of the Supreme Court in Sydney after a formal opening by The Chief Justice of NSW Sir Laurence Street.

Among the artists represented were three from Wollongong: John Eveleigh, Edith Kouto and Judy Weeks. All three also have work exhibited in the University's growing permanent collection. The painting by John Eveleigh was a three-quarter-length portrait of Mr Justice Hope, Chancellor of The University of Wollongong, wearing the robes of Chancellor. This was in fact a painting commissioned by the University last year.

John Eveleigh is of course a Senior Lecturer in painting in the School of Creative Arts—a Long Gallery co-ordinator since 1984 and adviser to the Vice-Chancellor Professor Ken McKinnon's committee on aspects of the University's permanent collection.

Judy Weeks, whose exhibited work was entitled Judge's Dilemma, last year completed her Associate Diploma course in the School of Creative Arts with distinction and is now studying for her Bachelor of Creative Arts degree. She is scheduled to share an exhibition next month with Merilee Swan at the New Holdsworth Gallery in Sydney.

Merilee Swan is also represented in the University's permanent collection. Like Judy she has completed her Bachelor of Creative Arts Diploma course with distinction and is presently studying for her Bachelor of Creative Arts degree.

Another artist represented in the University's permanent collection is Bert Flugelman, who is currently showing a portrait of his friend Guy Warren at the City of Wollongong gallery and Warren, in turn, is showing his Archibald-winning portrait of Flugelman alongside it....

## Job Vacancies

Details of the positions listed below are on file in the **Campus News** Office — room G24A, on the ground floor in the administration building.

### AUSTRALIAN CONSERVATION FOUNDATION DIRECTOR

The Australian Conservation Foundation is seeking a Director, to take up office in September next, when the present Director will become Projects Director.

The Director is the chief executive of the Foundation and is responsible for carrying out its policies and managing its staff and affairs, assisted by a Projects Director and a Campaigns Director. The head office is in Melbourne.

The Foundation seeks a person with an extensive knowledge of conservation issues in Australia, and an ability to present them to governments, to the public and in the

media. He or she must have the capacity to give leadership to members and staff of the Foundation, and in the conservation movement generally.

The salary is \$35,000 pa, the rewards of the position being more in the opportunities for service to the cause of conservation than in the remuneration.

Applications and requests for further information may be forwarded in confidence to: The President, The Honourable Hal Wootten Q.C., 18 Pearson Street, Balmain NSW, 2041.

Applications should reach him by 31 May 1986.

Macquarie	Centre for Environmental and Urban Studies, Chair in Urban Studies Teacher Education Program Half-time Lecturer
Massey NZ	Assistant Registrar in the Student Centre Director of Extramural Studies Lecturer/Senior Lecturer in Veterinary Virology Market Research Centre Junior Research Officer Lecturer/Senior Lecturer in Mathematics



## Staff Roundup

### SELECTION TECHNIQUES WORKSHOP

This two-day workshop, to be held on June 30 and July 1, is aimed at staff who are involved in the selection and appointment process.

The workshop will provide an opportunity for staff members to develop skills relating to the whole process including drafting job descriptions and advertisements, determining selection criteria, culling applications, interviewing techniques and assessing applicants. EEO principles and discrimination law, and their relationship to the process, will also be considered. Workshop participants will be able to practice the skills involved throughout the selection process.

Staff members wishing to nominate for this workshop should complete the nomination form available from the staff office (ext. 3798 or 3944). Closing date for nominations is June 6.

Further details: Wendy Raikes, ext 3798.

### QUESTION TIME – GENERAL STAFF CONDITIONS OF EMPLOYMENT

**Q.** I have been employed by the University for the past seven years, and I am planning to resign shortly due to a chronic illness. I do not intend to return to the workforce. Do I have an *automatic* entitlement to payment for long service leave?

**A.** Clause 19, Long Service Leave, of the New South Wales Universities (General Staff Conditions of Employment) (State) Award prescribes staff members' entitlements to Long Service Leave.

Where a member of staff has completed at least five years continuous service as an adult, but less than ten years continuous service, and resigns on account of illness, incapacity, domestic or other pressing necessity, such member of staff may be entitled to a proportionate amount of Long Service Leave, calculated on the basis of three months for fifteen years service. Therefore, the entitlement *is not automatic* as it would be in the case where a staff member has served ten years continuous service.

Staff members resigning on account of the above-mentioned or similar circumstances, are required to request, in writing, approval of the payment of pro-rata Long Service Leave and to give full details of the reasons, together with appropriate documentation, thought to entitle them to such payment.

Further details: Peter Maywald, ext 3798.

### A COMMENTARY ON MY DEVELOPMENT LEAVE

by John Shipp, Michael Birt Library

Lehigh University in Bethlehem, Pennsylvania is not one of America's ivy-league universities. Established in 1865, Lehigh is a private university with an enrolment of about 8,000 students. The curriculum has a strong emphasis on business, chemistry and engineering as well as education.

Until recently, the Bethlehem Steel Company was the major economic force in the Lehigh Valley. The Company maintained a paternalistic attitude toward Bethlehem and the University. This attitude pervaded most campus activities but had the advantage of providing much of the physical facilities.

Similarities between Wollongong and Bethlehem prompted me to include Lehigh among the ten university libraries visited as part of development leave in the USA during March and April of this year. Other institutions visited included the Massachusetts Institute of Technology, Brown University and the Universities of Maryland and Illinois.

The purpose of my visits was to look at the way in which the libraries were administered, the use of information technology and, where appropriate, new buildings. Some of the libraries had reputations as leaders in the field of library automation. In truth, many have progressed only slightly further than the University of Wollongong and at far greater expense. Lehigh University was remarkable for its quiet and real achievement.

In 1985, Lehigh dedicated the E.W. Fairchild – Martindale Library and Computer Centre. At a cost of almost \$11 million, the building has passive solar collectors to provide energy. Sun-tracking louvres automatically move light into the building, and regulate light sensors within. With an area of approximately 80,000 square feet, the Fairchild-Martindale Library has capacity for more than 450,000 volumes and seating for 850. In addition to a media centre and electronic classroom, the Library has microcomputers located throughout the building for use by students.

The Library reflects the tone set by the University President, Peter Likins, who stresses 'achievement and challenges'. Likins aims to ensure that Lehigh earns recognition as a major American university. To achieve this distinction, the University embarked on a development program. During the last ten years, \$112 million has been raised and the Fairchild-Martindale Library is regarded as one of the major achievements of the University's development.

The Library building, with its collections and information services, is considered an integral part of the Lehigh drive for excellence. The University recognises that to develop quality will cost money. It also recognises that development cannot occur in too many directions at once.

### TAXATION SNIPPETS

Over the next few weeks, a number of items covering the manner in which your salary and other payments are taxed will be featured. This week we look at the taxation of annual leave loading.

Leave loading payments made during the tax year (ie July 1 to June 30) are not taxable unless they in total exceed \$320. If the amount of leave loading paid exceeds \$320, the excess over \$320 of the total loading payments made during the financial year is added to the staff member's other earnings and tax instalments deducted from that total so obtained.

For example, if the leave loading entitlement for a particular staff member amounted to \$400, then \$320 would be paid free of tax and the difference between \$320 and \$400, namely \$80, would be added to the staff member's normal fortnightly earnings and tax instalments deducted at that rate for that particular pay.

Further details: Salaries Section, ext 3930.

### CONGRATULATIONS

**ALBIE LENARTAS**, a Technician with the School of Creative Arts, recently married Cassandra Cranny.

**JUDY ALEXANDER**, a Graduate Assistant in Academic and Student Services, recently became engaged to Michael Fuller.

We extend to both Albie and Judy our best wishes.



## HOW WELL DO YOU KNOW YOUR AWARD?

Most of the general staff are employed under the New South Wales Universities (General Staff Conditions of Employment) (State) Award. Do you know what this award covers? The "Green Book", as it has become known, contains the provisions of the award, and has recently been reprinted. If you do not have a copy of the Green Book, you may obtain one by contacting Staff Office, either ext 3798 or 3944.

## CURRENT VACANCIES

- \* Computer Programmer, Administrative Data Processing Unit, closing date May 15
  - \* Research Assistant, Psychology, closing date May 15
  - \* Secretary, Accountancy & Legal Studies, closing date May 15
  - + Lecturer/Senior Lecturer, Economics, closing date May 16
  - + Lecturer, Economics, closing date May 16
  - \* Research Associate, Teaching Company Scheme (Chemistry), closing date May 30
- Further details: for those vacancies marked
- \* Gary Graham, ext 3935
  - + Ross Walker, ext 3934

## STAFF CHANGES

### NEW STARTERS

Mr G.C. Barton, "Engineering" position, Illawarra Technology Centre

Mr A.M. Hawkes, "Technical" position, Illawarra Technology Centre

Ms M. Barker, Technical Officer, Biology

Ms L.A. Wigram, Computer Trainee, Computer Centre

Mr L.A. Stevenson, Laboratory Assistant, Psychology

Mr M.D. Imisides, Research Assistant, Chemistry

Ms B. Connelly, Typist/Office Assistant, Aboriginal Education Unit

Mr A.L. Wingrove, Research Officer, Metallurgy & Materials Engineering

Miss H.E. Inman, Laboratory Assistant, English

### DEPARTURES

Mr J. Ashton, Professional Officer, Computing Science

Mr J.H. Mitchell, Lecturer, Education

## Seminars

### DEPARTMENT OF ENGLISH— POSTGRADUATE SEMINARS

Date: Tuesday, May 20, 4-5.30pm, 19 room 1115

Speaker: Mr Rod McConchie, Lecturer, Department of English

Topic: "It hurteth the memorie, and hindreth learning": attitudes to the use of the vernacular in 16th century England.

### BIOMEDICAL EVENING

Seminar will be preceded by a char grill dinner at 6.30 pm in the Union Bistro. Those interested in attending the dinner should contact Dr E.J. Steele before the designated evening so that appropriate bookings can be made.

Seminar will begin at 8 pm in the Biology Seminar Room (Room 104, Building 35).

Date: Wednesday May 28

Speaker: Professor P. Hersey, Royal Newcastle Hospital

Topic: Immune Responses Against Human Melanoma

## Sources of Funds

### NSW GRANTS FOR VISUAL ARTS AND CRAFTS

Grants under this program are mainly intended to subsidise salaries and certain other costs of professional artists working in art museums, community art and craft centres and other organisations as workshop directors or artists in residence, and for public murals. Limited assistance is also available for the costs of mounting exhibitions.

Applications close June 27.

### PREVIOUSLY REPORTED IN CAMPUS NEWS

Name	Closing Date With Agency
Special Research Grants — New Staff	May 16
1986 Writer's Fellowship	May 16
NEERDC	May 21
International Year of Peace	May 26
Immigration and Ethnic Affairs	
— Grant In Aid	May 30
Australian Water Research	May 30
National Biotechnology Program	May 30
National Heart Foundation	May 31
Multiple Sclerosis	May 31
Australian War Memorial	June 2
NSW Theatre and Dance Awards	June 6
Visual Arts Board	June 15
Australia Council: Touring and	
Access Fund	June 15
C & V Ramaciotti Foundation	June 30
Victorian Law Foundation	
Historical Study	June 30
Criminology Research Council	N/A
Electrical Research Board-Grants & Scholarships	July 4
1987 Science Exchange Visits	Sept 1
Research Into Drug Abuse	N/A
Australian Institute of Urban Studies	N/A
International Year of Shelter for	
the Homeless	N/A
Family Planning Program	N/A

Date: August 6

Speaker: Dr W.J. Peacock, Chief, CSIRO, Division of Plant Industry, Canberra.

Topic: Gene Engineering in Plants

### DEPARTMENT OF PHYSICS

(All to be held in the Physics Lecture Theatre Bldg. 18 Rm. 118).

Date: Thursday May 22

Speaker: Dr Ian McIntosh, Department of Physics, University of New England.

Topic: Metal Vapour Lasers.

Date: Thursday June 5

Speaker: Dr Trevor Tansley, School of Mathematics and Physics, Macquarie University.

Topic: Nitride Semiconductors.

Date: Thursday July 17

Speaker: Dr John Collins, CSIRO Div. of Applied Physics, Lindfield.

Topic: Low Temperature Thermal Properties of Defects in Alkali Halides.

# eEO news....

## ENGLISH ON THE JOB CLASSES BEGIN

Next week, English classes during work time will begin for two groups of eight cleaners with a non-English speaking background. The course, which offers four hours tuition each week, will be conducted on campus by the Adult Migrant Education Service (AMES) which is funded by the Department of Immigration and Ethnic Affairs.

The program aims to teach work-related communication skills and to develop not only literacy but confidence in the participants' ability to acquire English and other skills.

This initiative is an excellent example of a practical step to improve the employment opportunities of staff whose first language is not English. Further, it has been opened to part-time members of staff and, as such, marks a 'first' (as far as I can ascertain) in such programs.

I congratulate the University, the FMWU (the Federated Miscellaneous Workers' Union), AMES, and the participants for making this possible.

Kathy Rozmeta  
EEO Co-ordinator  
Ext: 3917

## friends

## Campus Community Interface

### YOUTH CONCERT

Ald Bevan Fermor, Friends Member No 127 (pictured), would like as many Friends as possible to attend the NSW Band Association Youth Concert Band performance at the Town Hall on Wednesday May 14 at 7.30 pm.

Tickets at \$5 adult \$2.50 concession are on sale now at the Town Hall Booking Office.

The Youth Concert Band is 55 strong and includes many young people all under the age of 19. Selection is by state-wide audition.

They will be performing a wide range of popular and traditional concert band music under the baton of Musical Director, Capt. Frank Rogers.

To add variety, the Wollongong Brass Band, in which Ald Fermor is a trombonist, will play a number of pieces which will demonstrate the contrast between a brass band and a concert band.

The Lord Mayor will be holding an reception for the Youth Concert Band on the afternoon before the performances.



## Concerts, Exhibitions and Entertainment

### DOUBLE – BILL FOR WORKSHOP THEATRE

Workshop Theatre's current production, to run until May 24, is a double-bill with a difference.

Robbie Collins from Wollongong University, and director of last year's production of *Top Girls*, is directing an ensemble written play, created by herself, members of her cast and crew. The play, *Just Between You and Me*, is an episodic montage about seven women, their image in society and their relationship.

The idea for the piece started with pre-show workshops for *Top Girls*; most of Robbie's cast for *Just Between You and Me* were involved in this show. Work started for the forthcoming show in December last year. It shows the importance of women's relationships with other women in their daily lives, and with their interactions with men. *Just Between You and Me* does not take an anti-male stance; rather, it aims to say "here we are," to celebrate this fact and to show women as they are with humour, sadness and everyday problems and concerns.

The second play of Workshop's billing is Steven Berkoff's *Metamorphoses*, directed by Ian Steen. Ian, a drama therapist for the Handicapped Persons Trust, is well-known for his highly unconventional style, so his latest production promises to be spectacularly exciting.

*Just Between You and Me* and *Metamorphoses* are showing at Workshop Theatre on Wednesday, Friday and Saturday nights until May 24, starting time is 7.30 pm.

Tickets are available at Wilsons and seats are generally available at the door. Workshop Theatre is located in Gipps Road, Gwynneville, in the shopping centre.

### ITALIAN NIGHT

An Italian night will be held by Il Circolo Italiano on Tuesday June 3 in the Union Hall, 7 pm for 7.30 pm. The concert is being held in celebration of the 10th Anniversary of Il Circolo Italiano.

Tickets available from Beatrice Henderson, Department of European Languages, or Elena Caruso, Union Office. Closing date for bookings: Thursday May 29.

Mavis Miller, President, Il Circolo Italiano - Telephone No. 962671. The University of Wollongong Union - Telephone No. 297833.

### ILLAWARRA MUSIC CLUB CONCERT

Pamela Mildenhall (Soprano) and Anna Meszaros (Accompanist) will appear in a concert at Wesley Uniting Church, Crown Street, Wollongong, on Friday May 23 at 8 pm.

Tickets available from Jurjens, Keira Street, Wollongong Telephone 292379. \$6 and \$4 (concession).

## Advertisements

### CAR FOR SALE

Volkswagen 1600 1971 Excl. Cond. 12 months Rego, \$1200 o.n.o. Enquiries after 4 pm 55 Billabong Ave, Dapto.

### ACCOMMODATION WANTED

Urgent: two bedroom flat or one-bedroom flat with sun-room for mature-age student and teenage son. Contact Sheila ext 3996 or 833454 after hours.

Staff member seeks house to rent, preferably near beach. Wanted either immediately or from July/August, on long lease (three years or similar). Stephen Castles, ext 3779, Centre for Multicultural Studies.