



UNIVERSITY
OF WOLLONGONG
AUSTRALIA

University of Wollongong
Research Online

Faculty of Business - Papers

Faculty of Business

2013

Do countries belonging to the same region suggest the same growth enhancing variables? Evidence from selected South Asian countries

Arusha Cooray

University of Wollongong, arusha@uow.edu.au

Antonio Paradiso

Ca'Foscari University of Venice

Francesco Giovanni Truglia

Italian National Institute of Statistics

Publication Details

Cooray, A., Paradiso, A. & Truglia, F. Giovanni. (2013). Do countries belonging to the same region suggest the same growth enhancing variables? Evidence from selected South Asian countries. *Economic Modelling*, 33 772-779.

Research Online is the open access institutional repository for the University of Wollongong. For further information contact the UOW Library:
research-pubs@uow.edu.au

Do countries belonging to the same region suggest the same growth enhancing variables? Evidence from selected South Asian countries

Abstract

We investigate the growth enhancing variables in a group of countries belonging to the same geographical area namely, India, Sri Lanka, Pakistan and Bangladesh over the period 1960-2010. We find that this "homogeneity" does not necessarily imply that countries have the same growth enhancing variables due mainly to differences in institutions and policies. Our result suggests that time-series econometrics are preferable to identify the growth drivers for a country accurately.

Keywords

era2015, same, asian, countries, region, do, suggest, growth, enhancing, variables, evidence, selected, belonging, south

Disciplines

Business

Publication Details

Cooray, A., Paradiso, A. & Truglia, F. Giovanni. (2013). Do countries belonging to the same region suggest the same growth enhancing variables? Evidence from selected South Asian countries. *Economic Modelling*, 33 772-779.

**Do Countries belonging to the same Region Suggest the Same Growth Enhancing Variables?
Evidence from selected South Asian countries**

Arusha Cooray

arusha.@uow.edu.au

School of Economics University of Wollongong, Wollongong (Australia)

Centre for Applied Macroeconomic Analysis, Australian National University (Australia)

Antonio Paradiso*

anto_paradiso@hotmail.com

Italian National Institute of Statistics (ISTAT), Rome (Italy)

Francesco Truglia

truglia@istat.it

Italian National Institute of Statistics (ISTAT), Rome, (Italy)

Abstract

We investigate the growth enhancing variables in a group of countries belonging to the same geographical area namely, India, Sri Lanka, Pakistan and Bangladesh over the period 1960-2010. We find that this “homogeneity” does not necessarily imply that countries have the same growth enhancing variables due mainly to differences in institutions and policies. Our result suggests that time-series econometrics are preferable to identify the growth drivers for a country accurately.

Keywords: Homogeneity, Country specific time-series, South Asian countries.

JEL Classification: O40, C22, O53

*Corresponding author.

Acknowledgments: We wish to thank two anonymous referees, Raghendra Jha, Amnon Levy, Jakob Madsen, Willi Semmler and David Weil for valuable comments.

1 Introduction

One of the most influential cross-country studies on economic growth is the study of Mankiw et al. (1992), hereafter MRW. The authors performed an empirical evaluation of an extended version of the Solow-Swan growth model by incorporating human capital. They found that the augmented Solow-Swan model fitted the data well and yielded plausible estimates of the elasticity of output with respect to capital. Numerous authors have since used the MRW framework to study the significance of additional factors on growth (Durlauf and Quah 1999). Some authors, such as Durlauf and Johnson (1995) and Dinopoulos and Thompson (1999), have questioned these results. The first authors maintain that heterogeneity among various groups of countries should be considered (i.e., grouping the countries in homogenous groups). The second authors present the Schumpeterian view of the growth model, where the distribution of a country's technology depends on their R&D expenditures, and maintain that differences in technology should be imposed in estimations for greater accuracy in results. Evidence of such (technological) heterogeneity may also be found in Durlauf et al. (2001). Moreover, evidence of parameter heterogeneity using different statistical methodologies has been also found by Canova (2004) and Desdoigts (1999).

Our research focuses on a group of South Asian countries (India, Sri Lanka, Pakistan and Bangladesh). In the literature, the South Asian countries have been considered similar and homogeneous (and for this reason considered suitable to study using panel estimation techniques) based on some macro stylized facts (Narayan et al. (2010), Jongwanich and Kohpaiboon (2013)), on common history and historical relations (Rizavi et al. (2010)), and simply on international regional divisions (Jalles (2012)). We show, employing appropriate statistical tests, that despite apparent homogeneity in countries belonging to the same geographical area with similar technology, and apparent similar macro stylized facts, there could be other sources of heterogeneity such as different political, legal and economic institutions, and national policies that may change the forces driving growth in countries. This makes time-series estimation technique more suitable to precisely detect growth driving variables. Using country-specific time-series estimation, we show that growth enhancing variables are effectively different for these countries. Luintel et al. (2008) argue that panel regressions ignore significant cross country differences and suffer from problems associated with data pooling in the absence of balanced growth. Additionally, unless parameter heterogeneity is dealt with, estimates are biased and inconsistent yielding inaccurate conclusions for countries. Therefore, we believe that in the absence of a similarity among countries, time series estimation is

superior to cross-country/panel estimation (where data are available) to detect precise growth drivers for countries¹.

Section 2 presents country characteristics for the four South Asian countries selected for our analysis, illustrating their apparent homogeneity and showing their dissimilarities using appropriate statistical tests. Section 3 presents the model. Section 4 illustrates the methodological aspects and data. Section 5 explains the results and Section 6 concludes.

2. Country Characteristics

This study considers four South Asian countries – India, Sri Lanka, Pakistan and Bangladesh – because this group is considered homogeneous by the literature (Mallik and Chowdhury, 2001) and stylized facts seem to confirm this. Table 1 shows that these countries are very similar in terms of their economic performance (GDP growth and inflation rates), economic characteristics (capital accumulation measured by investment to GDP ratio, skills measured by average years of schooling², and structure of output measured by sectoral contributions to GDP), and technology (measured as investment per employee³), with the exception of Sri-Lanka which shows higher capital accumulation, education levels, capital per employee, and lower agricultural sector contribution to GDP.

[Table, 1 about here]

The similarity among countries can be investigated through a cross-sectional dependence test applied for the period 1975-2010⁴. The cross-sectional dependence is described as the interaction between cross-sectional units (i.e., households, firms and states as in our case) and has been widely

¹ See Coakley et al. (2006). This is justified by Luintel et al. (2008) who use the same approach as us by applying country by country time-series analyses. Also see Greiner et al. (2005), King and Ramlogan (2008) and Rao et al. (2011) for advantages of time-series methods.

² Average years of schooling is the years of formal schooling received, on average, by adults over age 15. (Data Source: Barro-Lee (2010)).

³ We use differences in investment ratio (normalized with respect to US) as a proxy measure of the technology difference among countries. A large difference in investment per employee indicates a large difference in capital intensities and, presumably, in technologies (Pianta, 1995). The similarity in technological level among Bangladesh, India, and Pakistan is indirectly confirmed by Dinopoulos and Thompson (1999) who sustain that the technology level in each country is strongly positively related to its human capital level.

⁴ We thank an anonymous referee for having suggested the usage of this test.

discussed in the spatial literature. Intuitively, dependence across "space" can be regarded as the counterpart of serial correlation in time series; it could arise from unobservable common factors or common shocks. If there exists cross-correlation, then the countries move together (driven by common factors) and we can say that have some similarities. When the time-series dimension T of the panel is larger than the cross sectional dimension N , which is the case in our data, one may use the LM test, developed by Breusch and Pagan (1980). The Breusch and Pagan [BP] (1980) test statistic is based on the squared pair-wise correlation of the residual series. The BP statistic tests the null of zero correlation using the following Lagrange multiplier statistic:

$$CD_{LM} = T \sum_{i=1}^{N-1} \sum_{j=i+1}^N \hat{\rho}_{ij}^2$$

with $\hat{\rho}_{ij} = \hat{\rho}_{ji} = \frac{\sum_{t=1}^T e_{ij} e_{jt}}{\left(\sum_{t=1}^T e_{ij}^2\right)^{1/2} \left(\sum_{t=1}^T e_{jt}^2\right)^{1/2}}$ (1)

where $\hat{\rho}_{ij}^2$ is the sample estimate of the pair-wise correlation of the residuals. BP show that under the null hypothesis of no cross sectional dependence the CD_{LM} statistic is asymptotically distributed as chi-squared with $N(N-1)/2$ degrees of freedom with N fixed and as T approaches to infinity.

To evaluate the presence of cross sectional dependence we use two alternatives models (equations 2 and 3) over the period 1975-2010:

$$y_{it} = \alpha_i + \beta_i' x_{it} + \varepsilon_{it}, \quad (2)$$

where y_{it} = GDP growth rate of the country i ; x_{it} = 4 x 1 vector of the following variables: Inv / GDP , $\Delta \ln(Schooling)$, $inflation$, y_{it-1} . The intercept α_i and the slope coefficient β_i are allowed to be heterogeneous across i (i.e., an OLS regression in the time series dimension of y_{it} on an intercept and x_{it} is performed for each cross section i , separately.);

$$y_{it} = \alpha_i + \beta' x_{it} + \varepsilon_{it}, \quad (3)$$

where the intercept is allowed to vary across units to account for country specific time invariant features such as unobservable and unmeasurable factors such as culture, norms, social beliefs,

geographic characteristics, etc. Both models do not reject the null hypothesis with a p-value of 0.096 and 0.209 for equations (2) and (3), respectively.

Another test used in literature to determine if two or more groups are significantly different is Levene's test [LT] (1960)⁵. More precisely, this test is used to examine if k groups have equal variances. If the variance of the groups differ significantly, then this provides strong evidence that groups are not selected from an identical population and are not similar. LT is an alternative to the Bartlett test. The LT is less sensitive than the Bartlett test to departures from normality⁶. Given a variable Y with sample size N divided into k subgroups (where N_i is the sample size of the i th subgroup), the LT is defined as

$$W = \frac{(N - k) \sum_{i=1}^k N_i (\bar{Z}_i - \bar{Z}_{..})^2}{(k - 1) \sum_{i=1}^k \sum_{j=1}^{N_i} (Z_{ij} - \bar{Z}_i)^2} \quad (4)$$

Where $Z_{ij} = |Y_{ij} - \tilde{Y}_i|$ with \tilde{Y}_i indicating the median of the i th subgroup, \bar{Z}_i are the group means of the Z_{ij} , and $\bar{Z}_{..}$ is the overall mean of the Z_{ij} . The definition based on the median and bootstrapping resampling is preferable since this version is more robust for the significance level under any kind of distribution and combination of sample sizes (Parra-Frutos (2009)). The null hypothesis is that the groups have equal variances.

We apply the LT test to the group of four countries (BGD, SLK, PAK, IND) to the period 1975-2010 and for the same variables considered in the BP test, namely, GDP growth rate (LT_{GDP}), inflation (LT_{INFL}), Inv / GDP ($LT_{INV/GDP}$), and $\Delta \ln(Schooling)$ ($LT_{\Delta \ln(SCH)}$). The LT_{GDP} exhibits a p-value of 0.07 and we reject the null at the 10% significance level; LT_{INFL} does not reject the null (p-value = 0.13), whereas both $LT_{INV/GDP}$ and $LT_{\Delta \ln(SCH)}$ reject the null (p-value < 0.01). Hence, only inflation exhibits an homogeneity among the four South Asian countries.

⁵ Plourde and Watkins (1998) applied Levene's test to investigate whether the behavior of oil prices changed in the 1980s and became more similar to that of other commodities. Examples of application of this test in economic growth studies are Starke et al. (2008) and Jakobi and Teltemann (2009).

⁶ Statistical tests conducted on our dataset show that our data are not normal. Results are available from the authors upon request.

Based on these tests, we can therefore conclude that there is evidence against the hypothesis that these countries move together with respect to a group of variables identifying economic characteristics of a country, suggesting dissimilarity among the countries. For this reason, time-series estimation techniques appear more suitable⁷ compared to panel data techniques to detect growth enhancing variables and discuss policies affecting growth.

3. The Model

The formulation used is a simplification of the MRW model employed by Senhadji (2000), Rao and Hassan (2012b), and Kumar and Pacheco (2012):

$$Y_t = A_t K_t^\alpha (H_t \cdot L_t)^{1-\alpha} \quad (5)$$

where Y = output; A = stock of knowledge; K = capital; H = human capital index; L = total employment; α = elasticity of output with respect to capital.

The intensive form of (5) is:

$$y_t = A_t k_t \quad (6)$$

where $y = (Y / H \cdot L)$ and $k = (K / H \cdot L)$. In (6) the variables are expressed in per worker terms adjusted for skill.

We assume, that the stock of knowledge A_t evolves over time t as follows:

$$A_t = A_0 e^{\tau_t + \nu_t \cdot T} \quad (7)$$

where A_0 is the initial stock of knowledge and τ and ν are variables capturing level and growth effects, respectively⁸. Equation (7) can be further extended by assuming that τ and ν are functions of other variables (see Rao (2010) and Casadio et al. (2012), among others):

⁷ When T is large, one can allow for heterogeneity by estimating a separate time-series equation for each unit (Coakley et al. 2006).

⁸ In steady state, when $\Delta \ln k \rightarrow 0$ and all differences go to zero (Sala-i-Martin, 1994), the steady state growth rate (SSGR) is equal to $SSGR = \Delta \ln A = \nu_{t-1}$. This way, ν captures growth effects. It is easy to show this. If we insert (7) into (6) and taking the logarithm, we obtain $\ln y_t = \ln A_0 + \tau_t + \nu_t \cdot T + \alpha \ln k_t$. If we take the first difference

$$\tau_t = \phi_1 s_t + \phi_2 s_t^2 + \delta z_t \quad (8)$$

$$v_t \cdot T = (\gamma_1 + \gamma_2 x_t) \cdot T \quad (9)$$

τ is assumed to be non-linear in s and linear in z . For equation (8) to make sense $\phi_1 > 0$ and $\phi_2 < 0$, so that the s variable has its maximum effect when $s = -0.5(\phi_1 / \phi_2)$. This variable, prior to reaching its maximum effect, increases at a decreasing rate. Each additional unit of s contributes less and less to the level of output. For example, a variable which may exhibit non-linear effects is trade openness. Kholi and Singh (1989) for instance, show evidence of non-linearities in the relationship between exports and growth. v is a function of variables with growth effects but ignored (γ_1) and known variables (x) that have to be identified. T is a time trend.

With these modifications the production function (6) will be:

$$y_t = A_0 e^{[\phi_1 s_t + \phi_2 s_t^2 + \delta z_t + (\gamma_1 + \gamma_2 x_t) \cdot T]} k_t^\alpha \quad (10)$$

$$\therefore \ln y_t = \ln A_0 + \phi_1 s_t + \phi_2 s_t^2 + \delta z_t + \gamma_1 \cdot T + \gamma_2 x_t \cdot T + \alpha \ln k_t \quad (11)$$

4. Data and Methodology

All data are drawn from the World Development Indicators with the exception of the average years of schooling (data source: Barro-Lee (2010)). The data cover the 1960-2010 period (with the exception of India and Sri-Lanka for which the data sample is from 1970-2010). Our selected growth-enhancing variables are: a time trend ($T(\pm)$), foreign direct investment to GDP ($FDIRAT(\pm)$), trade openness measured by the ratio of import plus export to GDP ($TRADE(\pm)$)⁹, ratio of current government expenditure to GDP ($GRAT(\pm)$), ratio of private

we have

$$\Delta \ln y_t = \Delta \tau_t + v_t \cdot T - v_{t-1} \cdot (T-1) + \alpha \Delta \ln k_t \Rightarrow \Delta \ln y_t = \Delta \tau_t + \Delta v_t \cdot T + v_{t-1} + \alpha \Delta \ln k_t$$

$$\Rightarrow SSGR = v_{t-1}.$$

⁹ According to Bergheim (2008), the best measure of openness is the time series of the trade share. That is the average share of exports and imports to GDP. Nominal variables are used to construct the openness measure.

investment to GDP ($IRAT(+)$), ratio of official development assistance and official aid received to GDP ($ODARAT(\pm)$), ratio of M2 to GDP ($M2RAT(+)$), inflation rate ($INFL(-)$), ratio of workers' remittances to GDP ($WRRAT(+)$). The expected sign of the coefficients are in parentheses. The literature shows that IRAT has a positive effect on economic growth. As increased financial sector development promotes economic growth, M2RAT is expected to have a positive effect on growth (King and Levine 1993). The South Asian economies are remittance dependent economies and the literature in general, shows a positive effect of remittances on growth¹⁰. Inflation increases price variability adversely affecting growth (Barro 1996). Studies show that the effect of FDI and trade on economic growth depends on the type of trade policy adopted by a country (Balasubramanyam et al.1996), level of human capital in a country (Borenztein et al. 1998) among other factors. Therefore these variables could have a positive or negative effect on growth. The effect of government expenditures and openness depend mainly on the quality of institutions and governance, as we will discuss in Section 5. Accordingly, the coefficient on GRAT could be positive or negative. Similarly the effects of foreign aid on growth could be positive or negative depending on the effectiveness of the government in channeling these aid flows into public expenditure programmes and economic policy (Roberts 2003; Burnside and Dollar 2000). As a preliminary step, we investigate the unit root properties of the variables using the ADF and DF-GLS tests. The results are reported in Table 1A in the Appendix. The null hypothesis of a unit root cannot be rejected for the levels of all the variables. In addition, we test for the null of a unit root in the first differences, which can be rejected at the 1% significance level, with the exception of $\Delta \ln k$ (5%) for Bangladesh, Sri-Lanka and India. The evidence from the unit root tests indicates that all variables can be characterized as exhibiting a unit root process. Since all series are I(1), it is legitimate to investigate the existence of a cointegrating relation. We use the Dynamic OLS (DOLS) estimator for our empirical estimation of the long-run relation (equation 11). The DOLS deals with the problem of second-order asymptotic bias arising from serial correlation and endogeneity and is asymptotically efficient (Saikkonen 1991). In addition, DOLS performs better in finite samples compared to other asymptotically efficient estimators (see Inder 1993 and Montalvo 1995).

¹⁰ See Cooray (2012). Rao and Hassan (2012a) however, show that the direct effects of remittances on growth are insignificant but evidence of small indirect effects.

5. Empirical Results

The results for equation (11) for the countries are reported in Table 2. In order to conserve space, we report only the best and more plausible results in terms of coefficient signs and magnitude (in particular for the elasticity of output with respect to capital α), diagnostic tests, and for the signs and statistical significance of the factor loading coefficient λ in the Error Correction Model (ECM). The diagnostic tests show that the models are correctly specified and the ECMs show a statistically significant factor loading (λ) with the expected negative sign. We also perform a test of stability (Quandt-Andrews structural breakpoint test¹¹) on the ECM. The estimates are stable with no evidence of breaks. In addition, we run three other stability tests: the OLS-based CUSUM test¹², the F test statistic¹³, and the Bai-Perron (2003)¹⁴ test. These tests confirm that our ECM estimates are stable. These results are reported in Tables 2-7 and Figure 1.

[Table 2-7, about here]

[Figure 1, about here]

Increased public spending in key priority areas such as health, education and social security welfare have contributed to sustained growth¹⁵ in Sri Lanka and Pakistan. In India, GRAT has only a level effect. In Bangladesh, GRAT does not enter at all as an explanatory variable. This result for

¹¹ The Quandt-Andrews breakpoint test (see Andrews (1993) and Andrew and Ploberger (1994)) is widely used in the empirical literature (see for example Martin and Milas (2012), Makin and Narayan (2012), Petrevsky and Bogoev (2012), Paradiso et al. (2012), Jawadi and Sousa (2013)) and tests for one or more unknown structural breakpoints in the sample for a specified equation. The idea behind this test is that a single Chow breakpoint test is performed at every observation between two observations. The test statistics from those Chow tests are then summarized into a single test statistic for a test against the null hypothesis of no breakpoints between two dates. This test checks whether there is a structural change in all of the original equation parameters.

¹² The OLS-based CUSUM test is a structural change test on cumulative residuals of the common OLS residuals (Ploberger and Kramer (1992)).

¹³ The F test statistic is an extension of the Chow test and calculates the F statistic for all potential change points in an interval; this test is rejected if these statistics get too large.

¹⁴ This method, for a given m breakpoint, tests for the single added breakpoint that most reduces the sum-of-squares. The test is run on all factor loading coefficients and the constant for all the ECM of the countries. By default, the test allows for a maximum number of 5 breaks, employing a trimming percentage of 15%, and uses the 0.05 level of significance for sequential testing. In our case (Table 7), the sequential test indicates that there is one breakpoint, but this break is not statistically significant because the F-statistic, along with the F-statistic scaled by the number of varying regressors, are below the critical value for all countries.

¹⁵ The positive contribution of public spending is further favoured by low taxes-GDP-ratio in these countries that has reduced the negative effects on private activity (Jha (2011)).

Bangladesh can be explained by high inefficiencies in the administration and usage of public resources (Ahmed 2001). IRAT has contributed to growth in Bangladesh although its value is slightly low compared to other countries (Table 1). This can be attributed to the development of the banking sector in Bangladesh, favouring savings mobilization, and increased investment leading to development of the real sector. Trade openness enters as a driving growth enhancing variable for three countries (Bangladesh, Sri-Lanka and India). This is the result of the formation of the South Asian Association of Regional Cooperation (SAARC) in 1985 and subsequent South Asian Preferential Trade Area (SAPTA Agreement) adopted by South Asian countries with the aim of promoting trade and regional cooperation. The exception is Pakistan where TRADE enters as a non-linear level variable (see Figure 2 for a plot of the nonlinearity effect). Non-linearity suggests that openness has a positive effect on output until a certain level, and beyond this value it produces negative effects. This may be explained by the poorer quality of institutions (defined by a society's enforced law and regulations protecting property rights) in Pakistan compared to other South Asian countries as defined by the governance index constructed by Kaufmann et al. (2010)¹⁶. This implies that when openness reaches high values, the quality of institutions have not reached levels that are required to protect and diffuse new ideas and skills stemming from stronger interaction with foreign firms.

[Figure 2, about here]

FDI enters (even if only as level effect) as a factor influencing output in Sri-Lanka due to higher educational levels compared to the other three countries (Borensztein et al. (1998)). For Pakistan and India, growth remains partially unexplained (i.e., determined by other factors not considered).

6. Conclusion

We investigate the growth enhancing variables in a group of selected South Asian countries (India, Sri Lanka, Pakistan and Bangladesh) over the period 1960-2010. Apart from their geographical proximity and homogeneity with respect to economic features, they also share a common history. We find, however, that contrary to what is maintained by some authors, this does not necessarily

¹⁶ The estimates of this index ranges from approximately -2.5 (weak) to 2.5 (strong). Unfortunately, it is not possible to conduct empirical work employing this measure of institutions due to the short sample period available (1996-2010). Additionally, there is no consensus on the definition and measurement of institutions in the literature (see for example Tebaldi and Elmslie (2008)).

imply homogeneity. We investigate the presence of this homogeneity using appropriate statistical tests. The tests show that these countries are dissimilar. This is due to differences in institutions and national policies. Our results show that empirical studies should focus more on country-specific time-series, in particular if the aim is to suggest appropriate policy measures for sustaining growth. However, we do not argue that cross-country studies are not useful. Countries with common stylized facts can be studied together as a first stage, since it is expected that belonging to the same region, these countries share some common characteristics in any case. In addition, this is the sole method if we do not have sufficient time-series data.

Our results suggest that time-series econometrics are preferable to identifying growth drivers for a country accurately. If country-specific investigation has this important advantage with respect to cross-country studies, in detecting the appropriate growth enhancing variables, why does the literature focus more on cross-country investigations? The answer is that cross-country studies have some advantages over time time-series analysis. First, cross-country studies may consider the average growth rate over long time periods, for example ten years, to estimate the effect of some variables on the growth rate. This technique eliminates the effect of business cycles that may influence the fluctuation of economic variables at higher frequency. In addition, taking the average growth rate over long time periods reduce the risk of structural breaks. Second, data are available for several countries only for short time periods of time, whereas country-specific time-series techniques require data over a long time span. All these advantages of cross-country studies are expected to vanish over the years, since econometric estimation techniques and the availability of good quality data (also for developing countries) are improving helping to solve these drawbacks of country-specific time series studies.

While policy needs to be implemented according to country specific characteristics, the general implications stemming from this study can be summarized as follows. The results suggest that trade openness is an important growth enhancing variable for all countries with exception of Pakistan where this variable has only a level effect on output (i.e., it can raise the economy's income level permanently but it has only a transitory growth effect). Bangladesh, Sri-Lanka and India should take measures to improve openness to sustain the growth in the long-run. For example, our estimates show that for Bangladesh a rise in trade openness of 1% implies a growth effect of 0.02%. This implies that a 0.1% increase in long-run GDP growth requires a five percentage point increase in openness (openness is the average share of exports and imports to GDP). Similar arguments apply to Sri-Lanka and India. A 1% increase in openness implies a growth effect of 0.01%. Although

these countries have opened up, its export performance is far below East Asia's (with the exception of Japan). Policies aimed at improving exports are necessary for promoting growth. Currently regional borders are constraining South Asia's growth due to inefficient trade routes. Satisfying trade restrictions in South Asia takes in average 30 days as opposed to 20 days in Latin America and 11 days for the OECD (Guerrero 2012). The lack of proper infrastructure and management systems has increased costs and reduced trade competitiveness. The removal of barriers to trade if accompanied by complementary reforms such as financial sector development, human capital and infrastructure development will accelerate growth (Chang et al. 2009). Government expenditure is an important driver of growth in Sri Lanka and Pakistan. For these countries, policies designed to protect and enforce expenditures in social sectors and infrastructure are needed to promote faster growth. Private investment expenditure enters as a growth enhancing variable for Bangladesh. Policies designed to support and encourage private investment is necessary to stimulate long-run growth in Bangladesh. There is a need for fiscal consolidation and government expenditure restructuring to prevent the private sector from being crowded out.

References

- Ahmed, N. (2001) Parliament and public spending in Bangladesh, Bangladesh Institute of Parliamentary Studies (BIPS), Dhaka.
- Andrews, D. W. K. (1993) Tests for parameter instability and structural change with unknown change point, *Econometrica*, 61, 821-856.
- Andrews, D. W. K. and Ploberger, W. (1994) Optimal tests when a nuisance parameter is present only under the alternative, *Econometrica*, 62, 1383-1414.
- Bai, J., Perron, P. (2003) Computation and analysis of multiple structural change models, *Journal of Applied Econometrics*, 18, 1-22.
- Balasubramanyam, V., Salisu, M., Sapsford, D. (1996) Foreign Direct Investment in EP and IS Countries, *Economic Journal* 106, 92-105.
- Barro, R. (1996) Inflation and Growth, Federal Reserve Bank of Saint Louis, May/June.
- Barro, R., Lee, J. (2010) A new data set of education attainment in the world, 1950-2010, NBER Working Paper No. 15902.
- Bergheim, S. (2008) Long-run growth forecasting, Springer-Verlag, Berlin, Germany.

- Borensztein, E., De Gregorio, J., Lee, J-W. (1998) How does foreign direct investment affect economic growth?, *Journal of International Economics*, 45, 115-135.
- Breusch, T., and Pagan, A. (1980) The Lagrange multiplier test and its applications to model specification in econometrics, *The Review of Economic Studies*, 47, 239-253.
- Burnside, C., and Dollar, D. (2000) Aid, Policies and Growth, *American Economic Review*, 90, 847-868.
- Canova, F. (2004) Testing for convergence clubs in income per capita: a predictive density approach, *International Economic Review*, 45, 49-77.
- Casadio, P., Paradiso, A., Rao, B. B. (2012) Estimates of the steady state growth rates for some European countries, *Economic Modelling*, 29, 1119-1125.
- Chang, R., Kaltani, L., Loayza, N. (2009) Openness can be Good for Growth: The Role of Policy Complementarities, *Journal of Development Economics*, 90, 33-49.
- Coakley, J., Fuertes, A., Smith, R. (2006) Unobserved heterogeneity in panel time series models, *Computational Statistics & Data Analysis*, 50, 2361-2380.
- Cooray, A. (2012) The Impact of Migrant Remittances on Economic Growth: Evidence from South Asia, *Review of International Economics*, 20, 985-998.
- Devarajan, S., Nabi, I. (2006) Economic Growth in South Asia: Promising, Un-equalizing, ...Sustainable? South Asia Region, World Bank.
- Desdoigts, A. (1999) Patterns of Economic Development and the Formation of Clubs, *Journal of Economic Growth*, 4, 305-330.
- Dinopoulos, E., Thompson, P. (1999) Reassessing the empirical validity of the human capital augmented neoclassical growth model, *Journal of Evolutionary Economics*, 9, 135-154.
- Durlauf, S., Kourtellos, A. and Minkin, A. (2001) The local Solow growth model, *European Economic Review*, 45, 928-940.
- Durlauf, S. N., Quah, D. T. (1999) The new empirics of economic growth; In *Handbook of Macroeconomics*, J. B. Taylor and M. Woodford (eds.), Amsterdam, Elsevier Science, 235-308.
- Durlauf, S. N., Johnson, P. A. (1995) Multiple regimes and cross-country growth behaviour, *Journal of Applied Econometrics*, 10, 365-384.
- Elliot, G., Rothenberg, T. and Stock, J. (1996) Efficient tests for an autoregressive unit root, *Econometrica*, 64, 813-836.
- Greiner, A., Semmler, W., Gong, G. (2005) The forces of economic growth: a time series perspective, Princeton University Press, Princeton.

- Guerrero, I., (2012) What if Trade Barriers were reduced in South Asia, Express Tribune, PK; Himalayan Times, NP; Economic Times, IN; Financial Express, BD; Financial Times, SL, October 10, 2012.
- Hansen, B. E. (1997) Approximate asymptotic p-values for structural-change tests, *Journal of Business and Economic Statistics*, 15, 60-67.
- Kaufmann, D., Kraay, A., Mastruzzi, M. (2010) The Worldwide Governance indicators: methodology and analytical issues; World Bank Policy Research Working Paper No. 5430; Washington, DC: The World Bank.
- Kholi, I., Singh, N. (1989) Exports and growth: Critical minimum effort and diminishing returns, *Journal of Development Economics*, 30, 391-400.
- King, R., and Levine, R. (1993) Finance and Growth: Schumpeter Might be Right, *Quarterly Journal of Economics*, 108, 717-738.
- King, A., Ramlogan, C. (2008) Is Latin America catching up? A time-series approach, *Review of Development Economics*, 12, 397-415.
- Kumar, S., Pacheco, G. (2012) What determines the long run growth rate in Kenya?, *Journal of Policy Modelling*, doi: 10.1016/j.jpolmod.2012.01.009.
- Inder, B. (1993) Estimating long-run relationships in economics, *Journal of Econometrics*, 57, 53-68.
- Jakobi, A. P., Teltemann, J. (2009) Convergence and divergence in welfare state development: an assessment of education policy in OECD countries, *TranState working papers* No. 93.
- Jalles, J. T. (2012) Openness, regional trade agreements and growth: evidence from Asia, *Asian Economic Journal*, 26, 63-85.
- Jawadi, F., Sousa, R. M. (2013) Structural breaks and nonlinearity in US and UK public debts, *Applied Economics Letters*, 2013, 20, 653-657.
- Jha, R. (2011) Fiscal policies and challenges in South Asia, in R. Jha (ed.) *Routledge Handbook of South Asian Economics*, London and New York: Routledge, pp. 171-181.
- Jongwanich, J., Kohpaiboon, A. (2013) Capital flows and real exchange rates in emerging Asian countries, *Journal of Asian Economics*, 24, 138-146.
- Levene, H. (1960) Robust tests for equality of variances, In Olkin, I., Ghurye, S.G., Hoeffding, W., Madow, W.G., Mann, H.B. (eds), *Contributions to probability and statistics. Essays in honor of Harold Hotelling*, Stanford University Press, Stanford, 278-292.
- Luintel, K., Khan, M., Arestis, P., Theodoridis, K. (2008) Financial Structure and Economic Growth, *Journal of Development Economics*, 86, 181-200.

- MacKinnon, J. G. (1996) Numerical distribution functions for unit root and cointegration tests, *Journal of Applied Econometrics*, 11, 601-618.
- Makin, A. J., Narajan, P. K. (2012) Re-examining the “twin deficits” hypothesis: evidence from Australia, *Empirical Economics*, *forthcoming*.
- Mallik, G., Chowdhury, A. (2001) Inflation and economic growth: evidence from four South Asian countries, *Asian-Pacific Development Journal*, 18, 123-135.
- Mankiw, N. G., Romer, D., Weil, D. W. (1992) A contribution to the empirics of economic growth, *Quarterly Journal of Economics*, 107, 407-437.
- Martin, C., Milas, C. (2012) Financial crises and monetary policy: evidence from the UK, *Journal of Financial Stability*, *forthcoming*.
- Montalvo, J. G. (1995) Comparing cointegrating regression estimators: some additional Monte Carlo results, *Economics Letters*, 48, 229-234.
- Narayan, S., Narayan, P. K., Mishra, S. (2010) Investigating the relationship between health and economic growth: empirical evidence from a panel of 5 Asian countries, *Journal of Asian Economics*, 21, 404-411.
- Paradiso, A., Kumar, S., Rao, B. B. (2012) The growth effects of education in Australia, *Applied Economics*, 45, 3843-3852.
- Parra-Frutos, I. (2009) The behaviour of the modified Levene's test when data are not normally distributed, *Computational Statistics*, 24, 671-693.
- Petrevsky, G., Bogoev, J. (2012) Interest rate pass-through in South East Europe: an empirical analysis, *Economic System*, 36, 571-593.
- Pianta, M. (1995) Technology and growth in OECD countries, 1970-1990, *Cambridge Journal of Economics*, 19, 175-187.
- Ploberger, W., Kramer, W (1992) The CUSUM test with OLS residuals, *Econometrica*, 60, 271-285.
- Plourde, A., Watkins, G. C. (1998) Crude oil prices between 1985 and 1994: how volatile in relation to other commodities?, *Resource and Energy Economics*, 20, 245-262.
- Rao, B. B. (2010) Time-series econometrics of growth-models: a guide for applied economists, *Applied Economics*, 42, 73-86.
- Rao, B. B., Hassan, G. M. (2012a) Are the direct and indirect growth effects of remittances significant?, *The World Economy*, 35, 351-372.
- Rao, B. B., Hassan, G. M. (2012b) An analysis of the determinants of the long-run growth rate of Bangladesh, *Applied Economics*, 44, 565-580.

- Rao, B. B., Tamazian, A., Vadlamannati, K. C. (2011) Growth effects of a comprehensive measure of globalization with country-specific time series data, *Applied Economics*, 43, 551-568.
- Rizavi, S. S., Khan, M. K., Mustafa, S. H. (2010) Openness and growth in South Asia, *South Asian Studies*, 25, 419-428.
- Roberts, J. (2003) Poverty Reduction Outcomes in Education and Health Public Expenditure and Aid. Overseas Development Institute Working Paper No. 210.
- Saikkonen, P. (1991) Asymptotically efficient estimation of cointegration regressions, *Econometric Theory*, 7, 1-21.
- Sala-i-Martin, X. (1994) Lecture notes on economic growth (I): Introduction to the literature and neoclassical models, *Economics Working Paper 77*, Department of Economics and Business, Universitat Pompeu Fabra.
- Schwert, G. W. (1989) Tests for unit roots: A Monte Carlo investigation, *Journal of Business and Economic Statistics*, 7, 147-159.
- Senhadji, A. (2000) Sources of economic growth: an extension growth accounting exercise, *IMF Staff Papers*, 47, 129-157.
- Starke, P., Obinger, H., Castles, F. G. (2008) Convergence towards where: in what ways, if any, are welfare States becoming more similar?, *Journal of European Public Policy*, 15, 975-1000.
- Tebaldi, E., Elmslie, B. (2008) Do institutions impact innovation? MPRA Working Paper No. 8757, Munich: Munich University Library.

Table 1: Economic Characteristics of the Countries Under Study

	Economic performance (Average over the period 1975-2010)		Capital accumulation (Average over the period 1975-2010)	Education (value at the end of 2010)	Capital intensity (Average over the period 2000-2010; US=100)	Structure of GDP (in 2010)		
	GDP growth*	Infl*	Inv/GDP*	Schooling	Inv/empl	Agr.	Ind.	Serv.
Bangladesh	4.46	8.42	17.87	5.79	1.78	18.8	28.5	52.7
India	5.91	7.41	22.80	5.13	2.27	19	26.3	54.7
Pakistan	5.11	9.87	18.62	5.59	2.98	21.2	25.4	53.4
Sri-Lanka	4.96	10.99	25.74	11.07	5.37	12.8	29.4	57.8

*average values over the period 1975-2010; Agr. = Agriculture sector; Ind. = Industrial sector; Serv. = Services sector;
Source: World Development Indicators.

Table 2: DOLS Estimates for the four South Asian countries

Bangladesh (BGD)	$\ln y_t = Interc. + \alpha \ln k_t + \gamma_{21} TRADE_t \cdot T + \gamma_{22} IRAT_t \cdot T$			
Sri-Lanka (SLK)	$\ln y_t = Interc. + \alpha \ln k_t + \delta FDI_t + \gamma_{21} TRADE_t \cdot T + \gamma_{22} GRAT_t \cdot T$			
Pakistan (PAK)	$\ln y_t = Interc. + \alpha \ln k_t + \gamma_1 \cdot T + \phi_1 TRADE_t + \phi_2 TRADE_t^2 + \gamma_2 GRAT_t \cdot T$			
India (IND)	$\ln y_t = Interc. + \alpha \ln k_t + \gamma_1 \cdot T + \delta GRAT_t + \gamma_2 TRADE_t \cdot T$			
	BGD Sample 1960-2010	SLK Sample 1970-2010	PAK Sample 1960-2010	IND Sample 1970-2010
	DOLS	DOLS	DOLS	DOLS
<i>Intercept</i>	11.000 (0.253) [43.473]***	8.827 (0.217) [40.590]***	6.294 (0.729) [8.636]***	10.050 (1.426) [7.045]***
$\ln k$	0.226 (0.018) [12.541]***	0.431 (0.013) [32.001]***	0.480 (0.047) [10.197]***	0.208 (0.105) [1.974]*
$\gamma_1 \cdot T$	-	-	0.028 (0.002) [13.636]***	0.038 (0.007) [5.571]***
<i>TRADE</i>	-	-	1.514 (0.403) [3.751]***	-
<i>TRADE</i> ²	-	-	-1.557 (0.461) [3.374]***	-
<i>TRADE</i> · <i>T</i>	0.017 (0.005) [3.266]***	0.011 (0.001) [8.097]***	-	0.008 (0.001) [6.512]***
<i>GRAT</i>	-	-	-	2.468 (0.318) [7.770]***
<i>GRAT</i> · <i>T</i>	-	0.033 (0.004) [8.652]***	0.051 (0.004) [11.187]***	-
<i>IRAT</i> · <i>T</i>	0.063 (0.011) [5.978]***	-	-	-
<i>FDI</i>	-	0.042 (0.011) [3.926]***	-	-
λ	-0.225 (0.095) [2.364]**	-0.448 (0.224) [2.002]*	-0.351 (0.164) [2.144]**	-0.710 (0.238) [2.978]***
EG residual test	-4.658**	-4.665*	-4.825*	-5.682***
LM(1) test (p-value)	0.312	0.665	0.105	0.751
LM(2) test (p-value)	0.562	0.732	0.256	0.404
LM(4) test (p-value)	0.523	0.553	0.141	0.553
JB test (p-value)	0.782	0.128	0.555	0.706
BPG test (p-value)	0.302	0.408	0.115	0.714
Notes: Dependent variable: log of output per worker adjusted for skill improvement. Standard errors are reported in () brackets, whereas <i>t</i> -statistics in [] brackets. *, **, *** denotes significance at 10%, 5%, and 1%, respectively. DOLS = Dynamic Ordinary				

Least Squares; EG = Engle-Granger t -test for cointegration; λ = factor loading in the Error Correction Model (ECM); BPG = Breusch-Pagan-Godfrey heteroskedasticity test; JB = Jarque-Bera normality test; LM = Breusch-Godfrey serial correlation LM test. In the DOLS leads and lags are selected according to the SIC criteria. The standard errors for the DOLS estimation are calculated using the Newey-West correction. BGD: A spike dummy in 1972 (Constitution of Republic) is added in the long-run equation; a spike dummy for 1964 (riots) and a dummy for the years 1971 and 1972 (liberation, war and constitution of Republic) are added in the ECM formulation. SLK: A dummy for the years 2003-2004 (Country's worst-ever floods and Tsunami) and for the period 1987-1989 (J.V.P. insurrection) are added in the long-run equation. PAK: A dummy for the years 1976-1979 (floods) is added in the long-run equation; two dummies (one for 1997-1998 (earthquake and flood disasters, political unrest), and the other for the 2008-2009 (flood and violent events in the Afghanistan-Pakistan war)) are added in the ECM formulation. IND: A dummy for the years 1979-1988 (flood disaster and market reforms) is added in the long-run equation; two spike dummies (one for 1991 (economic liberalization reform), and the other for the 1979 (flood disaster)) are added in the ECM formulation.

Table 3: Quandt-Andrews structural break tests for Bangladesh ECM, 1960-2010

Statistics	Value	Break	Probability
Max LR F-stat	3.278	1971	0.970
Max Wald F-stat	9.833	1971	0.224
Exp LR F-stat	0.776	-	0.914
Exp Wald F-stat	2.832	-	0.185
Ave LR F-stat	1.401	-	0.889
Ave Wald F-stat	4.204	-	0.189

Note: Probabilities calculated using Hansen's (1997) method.

Table 4: Quandt-Andrews structural break tests for Sri-Lanka ECM, 1970-2010

Statistics	Value	Break	Probability
Max LR F-stat	1.995	1983	1.000
Max Wald F-stat	9.975	1983	0.545
Exp LR F-stat	0.623	-	1.000
Exp Wald F-stat	3.629	-	0.324
Ave LR F-stat	1.183	-	1.000
Ave Wald F-stat	5.915	-	0.277

Note: Probabilities calculated using Hansen's (1997) method.

Table 5: Quandt-Andrews structural break tests for Pakistan ECM, 1960-2010

Statistics	Value	Break	Probability
Max LR F-stat	2.055	1980	1.000
Max Wald F-stat	10.276	1980	0.511
Exp LR F-stat	0.592	-	1.000
Exp Wald F-stat	3.214	-	0.425
Ave LR F-stat	1.162	-	1.000
Ave Wald F-stat	5.809	-	0.292

Note: Probabilities calculated using Hansen's (1997) method.

Table 6: Quandt-Andrews structural break tests for India ECM, 1970-2010

Statistics	Value	Break	Probability
Max LR F-stat	2.706	1977	1.000
Max Wald F-stat	10.826	1977	0.301
Exp LR F-stat	0.897	-	0.980
Exp Wald F-stat	3.877	-	0.152
Ave LR F-stat	1.744	-	0.955
Ave Wald F-stat	6.978	-	0.072

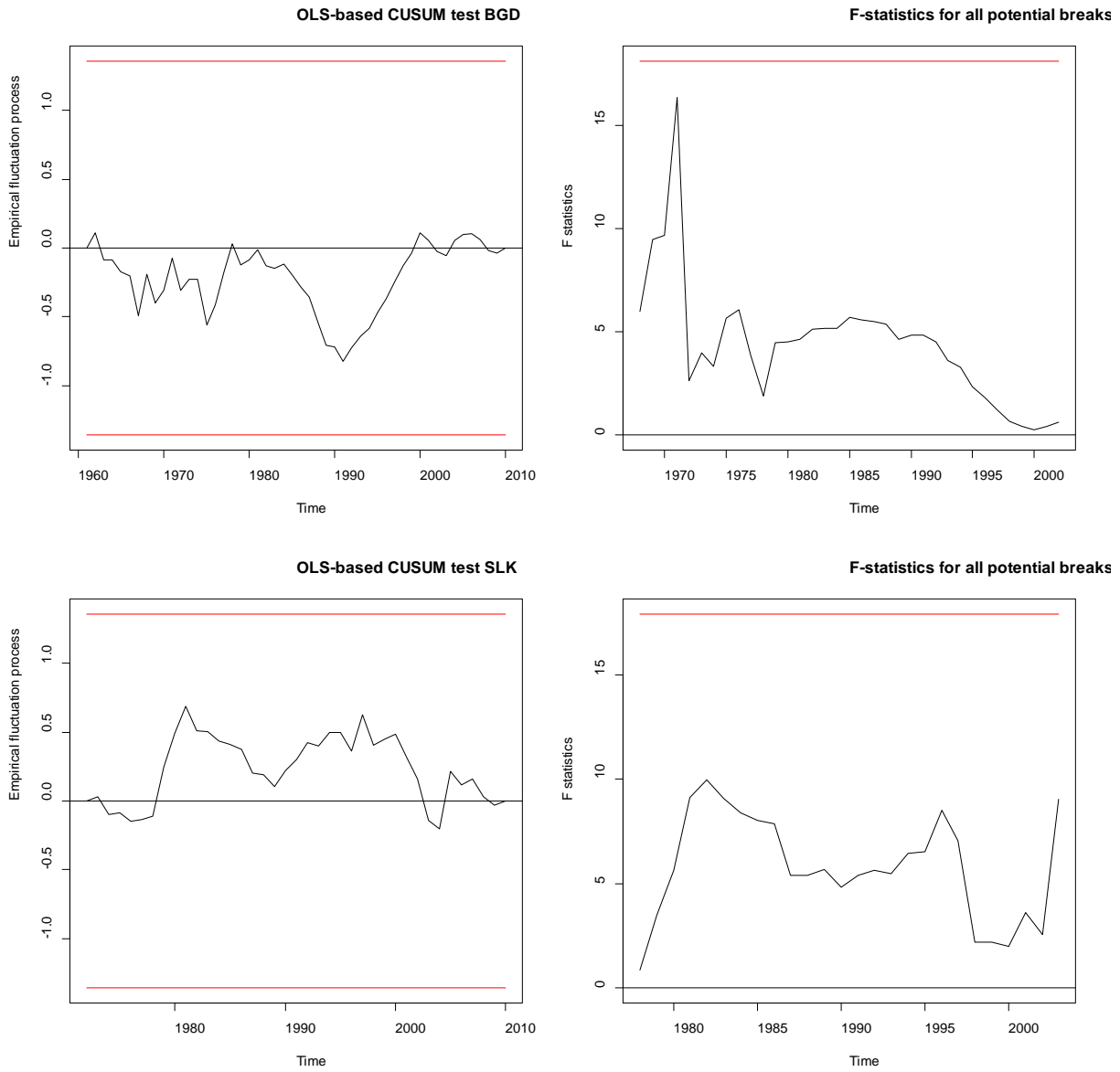
Note: Probabilities calculated using Hansen's (1997) method.

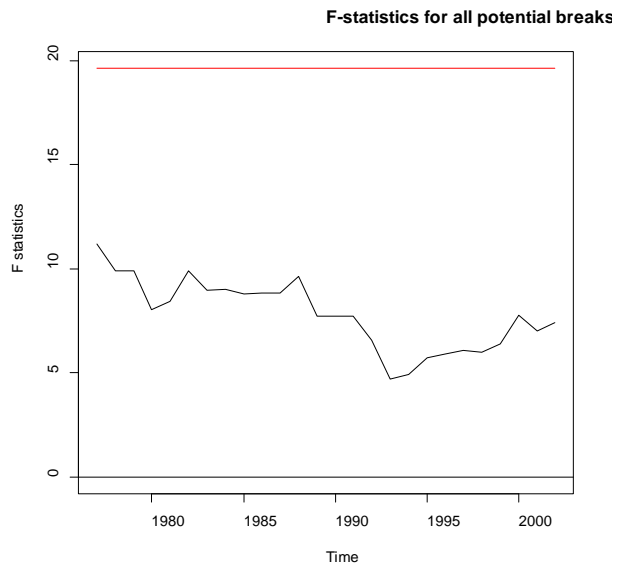
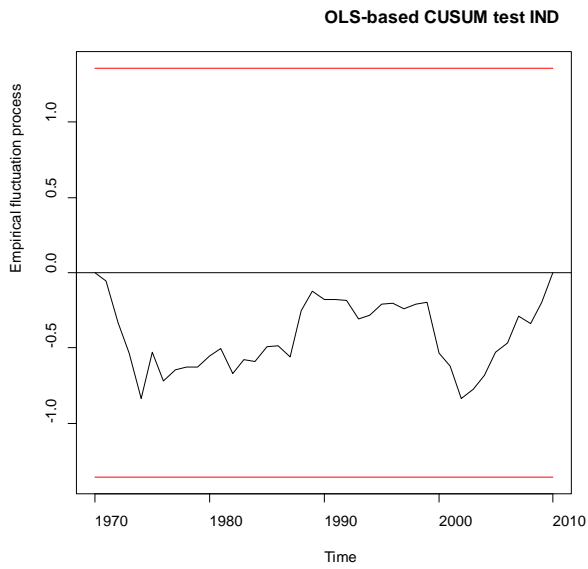
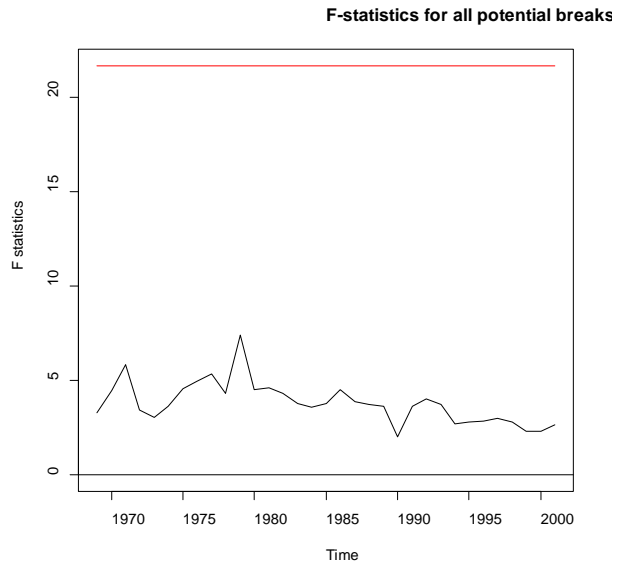
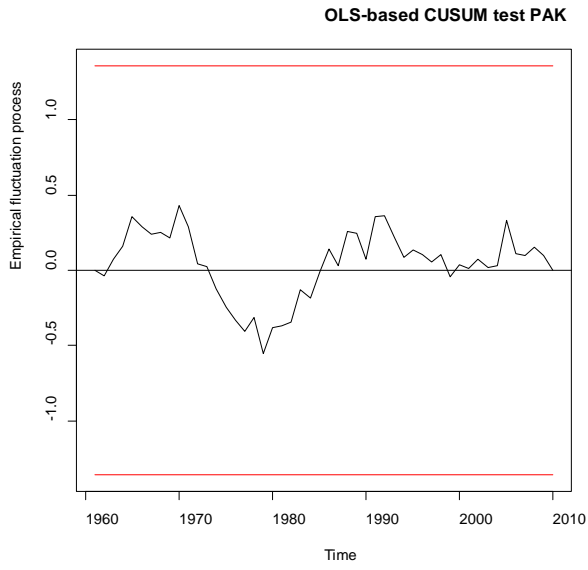
Table 7 : Multiple breakpoint tests (Bai-Perron test)

Country	Break Test	F-statistic	Scaled F-statistic	Critical Value*
Bangladesh	0 vs. 1	4.368	8.737	11.47
Sri-Lanka	0 vs. 1	4.871	9.743	11.47
Pakistan	0 vs. 1	1.505	3.009	11.47
India	0 vs. 1	3.171	6.342	11.47

Note: *Bai-Perron (2003) critical values.

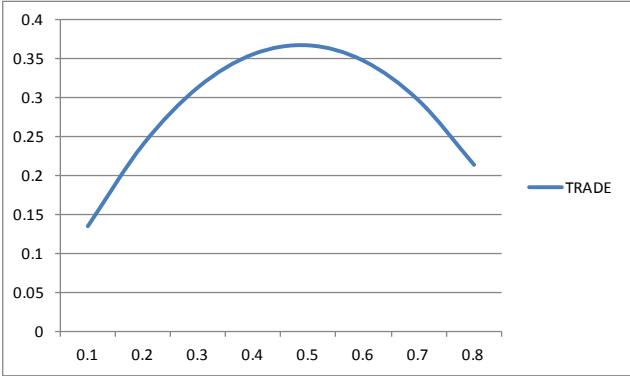
Figure 1: OLS-based CUSUM test and F-statistics





Note: The red lines indicate the boundaries.

Figure 2: Non-linear level effect of Trade openness in Pakistan



Maximum effect when $TRADE = -0.5(\phi_1 / \phi_2) = 0.486$.

Appendix

Table 1A : Unit root test results

Variable	BGD Sample 1960-2010		SLK Sample 1970-2010		PAK Sample 1960-2010		IND Sample 1970-2010	
	ADF	DF-GLS	ADF	DF-GLS	ADF	DF-GLS	ADF	DF-GLS
$\ln y$	-1.85	-1.71	-2.44	-2.50	-1.38	-1.27	-2.01	-1.46
$\Delta \ln y$	-5.28***	-4.09***	-4.16**	-3.98***	-6.80***	-6.86***	-6.93***	-7.10***
$\ln k$	-2.37	-1.85	-0.62	-1.85	-2.91	-0.85	-0.89	-2.14
$\Delta \ln k$	-4.05**	-3.65**	-3.62**	-2.95*	-4.46***	-4.31***	-3.54**	-2.92*
<i>TRADE</i>	-1.40	-1.47	-3.39*	-1.76	-1.44	-2.17	-0.94	-0.96
$\Delta TRADE$	-7.02***	-6.38***	-3.55**	-3.31**	-6.66***	-6.79***	-7.59***	-7.66***
<i>IRAT</i>	-2.47	-2.09	-1.70	-1.68	-2.81	-2.59	-1.57	-1.52
$\Delta IRAT$	-6.34***	-6.46***	-5.53***	-5.68***	-6.76***	-3.58**	-5.78***	-5.89***
<i>GRAT</i>	-1.11	-2.84	-1.23	-1.63	-2.22	-2.29	-1.70	-1.52
$\Delta GRAT$	-4.66***	-5.61***	-8.95***	-8.44***	-9.21***	-9.15***	-5.14***	-5.27***
<i>FDIRAT</i>	1.90	-1.34	-2.81	-2.86	-2.16	-2.19	-2.87	-2.78
$\Delta FDIRAT$	-6.72***	-6.60***	-6.79***	-6.97***	-4.56***	-4.55***	-7.94***	-5.24***
<i>ODARAT</i>	-0.69	-1.27	-1.97	-1.75	-3.10	-3.15*	-3.51*	-2.49
$\Delta ODARAT$	-12.94***	-3.81***	-8.54***	-8.77***	-7.00***	-7.09***	-6.03***	-4.63***
<i>WRRAT</i>	-0.65	-1.54	-2.23	-1.71	-2.16	-1.76	-2.07	-2.12
$\Delta WRRAT$	-4.26***	-4.12***	-3.87**	-3.93***	-5.42***	-4.60***	-4.49***	-4.31***
<i>M2RAT</i>	-0.95	-1.60	-3.12	-2.84	-2.59	-2.60	-2.43	-2.48
$\Delta M2RAT$	-4.65***	-4.41***	-4.63***	-4.47***	-6.42***	-6.54***	-4.45***	-4.00***
<i>INFL</i>	-2.44	-1.74*	-2.70*	-1.15	-2.65*	-1.72*	-2.77*	-0.24
$\Delta INFL$	-10.89***	-10.61***	-6.91***	-5.84***	-7.40***	-7.22***	-3.82***	5.06***

Notes: ***, **, * denote significance at the 1%, 5% and 10% level respectively. A model with a constant and trend is considered except for the *INFL* where only a constant is considered. The number of lags for the ADF and DF-GLS tests is selected according to the Schwert (1989) information criterion. The critical values for the ADF and the DF-GLS unit root tests are tabulated in MacKinnon (1996) and Elliot et al. (1996) respectively.