



UNIVERSITY  
OF WOLLONGONG  
AUSTRALIA

University of Wollongong  
Research Online

---

Coal Operators' Conference

Faculty of Engineering and Information Sciences

---

2016

# A Follow up to Study the Behaviour of Cable Bolts in Shear: Experimental Study and Mathematical Modelling

Naj Aziz

*University of Wollongong, naj@uow.edu.au*

Ali Marza

*University of Wollongong*

Jan Nemcik

*University of Wollongong*

Haleh Rasekh

*University of Wollongong*

Xuwei Li

*University of Wollongong*

---

## Publication Details

Naj Aziz, Ali Mirza, Jan Nemcik, Haleh Rasekh and Xuwei Li, A Follow up to Study the Behaviour of Cable Bolts in Shear: Experimental Study and Mathematical Modelling, in Naj Aziz and Bob Kininmonth (eds.), Proceedings of the 16th Coal Operators' Conference, Mining Engineering, University of Wollongong, 10-12 February 2016, 24-31.

Research Online is the open access institutional repository for the University of Wollongong. For further information contact the UOW Library:  
research-pubs@uow.edu.au

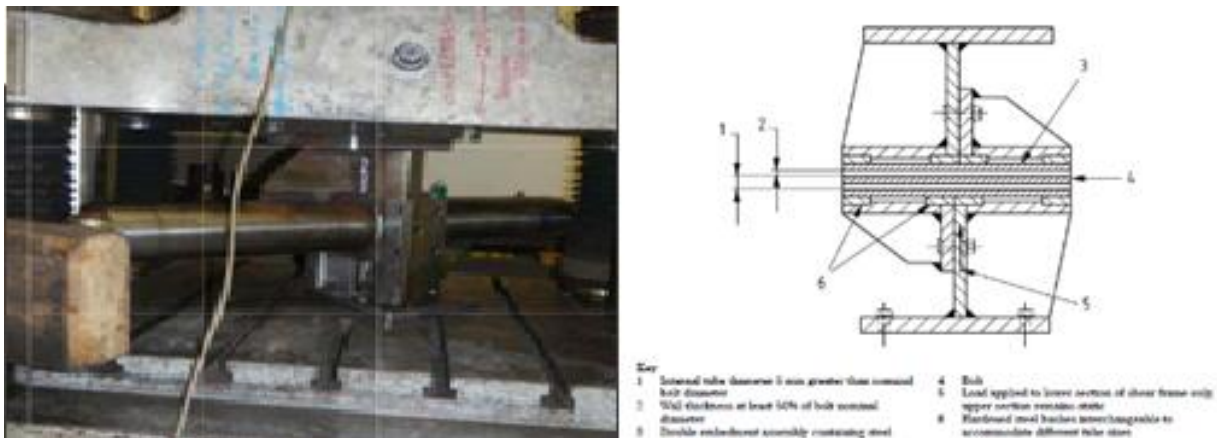
# A FOLLOW UP TO STUDY THE BEHAVIOUR OF CABLE BOLTS IN SHEAR: EXPERIMENTAL STUDY AND MATHEMATICAL MODELLING

**Naj Aziz, Ali Mirza, Jan Nemcik, Haleh Rasekh and Xuwei Li**

**ABSTRACT:** A mathematical model which is able to determine the pure shear strength of cable bolt was introduced and calibrated for various conditions. The proposed equation is developed based on the Fourier series concept and a linear relationship between shear and normal forces generated during cable bolt shearing. The conventional double shearing instrument was up to date to evaluate the pure shear strength of cable bolt by removing the contribution of concrete block frictional force. The experimental data obtained from the revised double shear instrument was in good agreement with the prediction of the proposed mode.

## INTRODUCTION

British Standard (BS 7861-2: 1996) since its development has been widely incorporated to determine shear strength properties of various tendons used in mining and civil industries. This standard indeed replicates guillotine box shearing whereby the bolt is cut across its cross section without being encapsulated in the host strata. As shown in Figure 1, the bolt in the passive mode (i.e. no pretension) was positioned inside the apparatus and loaded vertically until the pronounced failure was observed.



**Figure 1: Sectional diagram of double embedment shear frame with the unit being tested (BS 7861-2: 1996)**

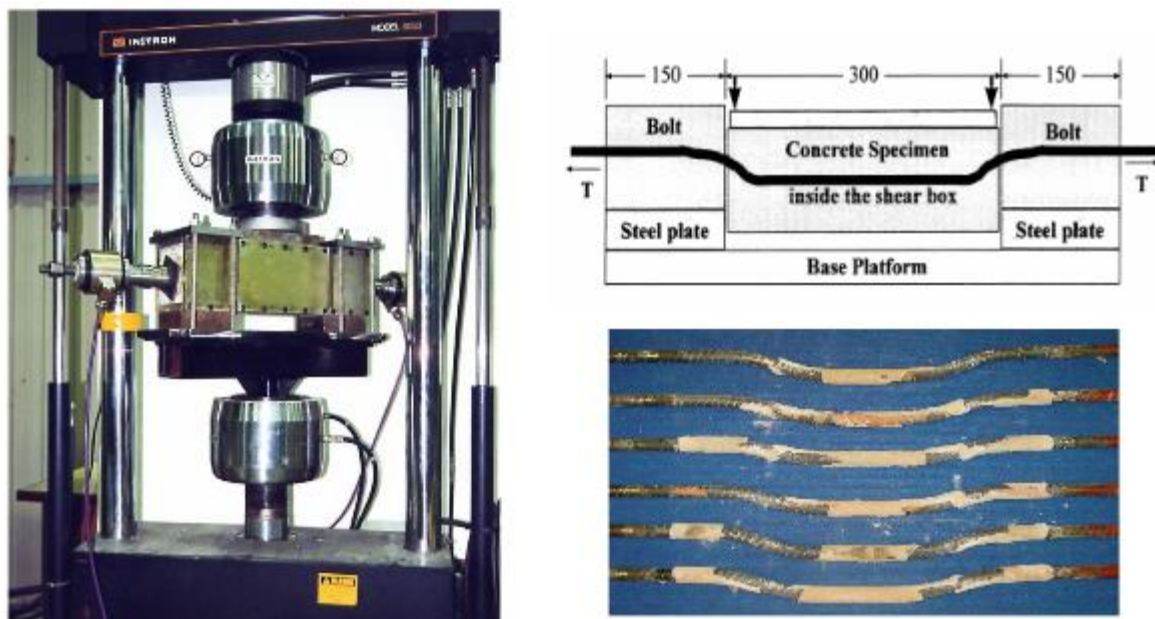
Despite of the fact that the British Standard can be carried out easily and without cumbersome initial sample preparation work, it possesses some conspicuous drawbacks as:

- The shear strength is underestimated as the bolt is not pretensioned prior to shearing,
- The testing assembly inevitably will lead to a metal to metal shearing (Figure 2),
- The bolt is not encapsulated inside the host strata, resulting in different confinement stiffness as compared to the field conditions.



**Figure 2: A view of the sheared sample, note the interaction between the strand and the steel tube**

Aziz *et al.*, (2003) incorporated the concept of double shearing to investigate the shear strength of three common types of bolt used in Australian mining industries. The instrument that was developed in this testing program is shown in Figure 3. Unlike the single shear test of British Standards (BS 7861-2: 1996), the bolt was encapsulated inside the concrete blocks, representing the host strata and pretensioned prior to shearing.



**Figure 3: Double shear instrument assembly (Aziz *et al.*, 2003)**

Aziz *et al.*, (2005) continued the previous study to investigate the effect of resin thickness in shear for bolt-grout-concrete interaction by double shear testing. ANSYS commercial software was applied to simulate numerically the experimental results obtained from this study.

Craig and Aziz (2010) studied shear behavior of cable bolts using a large scale double shear instrument as shown in Figure 4. It consisted of three concrete blocks with outer two cube blocks of 300 x 300 and 300 mm sides and the middle block of 300 x 300 x 450 mm sides. The concrete blocks were cast in the steel frame of the double shear apparatus, and before the concrete could be cast, a 20 mm diameter conduit pipe was placed through the pre-cut holes in the centre of the wooden ends and galvanised steel separators of the mould. The cable bolt was eventually encapsulated in the concrete blocks using an appropriate grout.



**Figure 4: Large scale double shear instrument**

An experimental study on the shear performance of plain and spiral cable bolts was carried out by Aziz *et al.*, (2014) using double shear apparatus. Other studies on shear behavior of cable bolts incorporating the same experimental instrument, were reported by Aziz *et al.*, (2015a), Rasekh *et al.*, (2015) and Li *et al.*, (2015a and b).

An original mathematical model for the shear behavior of cable bolt was introduced by Aziz *et al.*, (2015b). The model was associated with a set of systematic experimental study. Experimental study was performed and results were compared with the proposed mathematical equation.

The above mentioned mathematical equation designates the combination of shear strength of cable bolt and frictional force generated due to concrete block sliding. Since then the model has been further developed which calculates only the pure shear strength of cable bolt. This aspect of the study together with modified double shear equipment is the subject of this paper.

### MATHEMATICAL MODELING

The mathematical model is based on the assumption of a linear relationship between the shear and normal loads as:

$$S - N \tan(\varphi) - c = 0 \quad (1)$$

where,  $S$  is the shear load,  $N$  is the normal load,  $\varphi$  is the friction angle and  $c$  is the cohesion.

The Fourier series concept is applied to replicate the variation of the normal load against shear displacement. Fourier series is a mathematical technique incorporated to solve a large variety of engineering problems mainly adopting the principle of superposition:

$$N = \frac{a_0}{2} + \sum_{n=1}^{\infty} \left[ a_n \cos\left(\frac{2n\pi u}{T}\right) + b_n \sin\left(\frac{2n\pi u}{T}\right) \right] \quad (2a)$$

$$a_n = \frac{2}{T} \int_0^T \sigma_n \cos\left(\frac{2n\pi u}{T}\right) du \quad (2b)$$

$$b_n = \frac{2}{T} \int_0^T \sigma_n \cos\left(\frac{2n\pi u}{T}\right) du \quad (2c)$$

where,  $a_n$  and  $b_n$  are Fourier coefficients,  $n$  is the number of Fourier coefficient,  $u$  is the shear displacement and  $T$  is the shearing length.

Introducing Equations (2a, b, and c) in equation (1) by considering  $a_0$  to  $a_3$ , the shear strength is obtained as:

$$S = \left( \frac{a_0}{2} + \sum_{n=1}^3 \left[ a_n \cos\left(\frac{2n\pi u}{T}\right) \right] \right) \tan(\varphi) + c \quad (3)$$

The shear displacement at peak shear strength is determined by taking derivation of the above relationship respect to the shear displacement and equating to zero as:

$$\frac{d \left\langle \frac{a_0}{2} + \sum_{n=1}^3 \left[ a_n \cos\left(\frac{2n\pi u}{T}\right) \right] \right\rangle \tan(\varphi) + c}{du} = 0 \quad (4)$$

Thus, the peak shear displacement at peak shear strength ( $u_p$ ) is obtained as:

$$u_p = \frac{T}{2\pi} \cos^{-1} \left[ \frac{-4a_2 + \sqrt{16a_2^2 - 48a_1a_3 + 144a_3^2}}{24a_3} \right] \quad (5)$$

Introducing equation (5) in equation (3), the peak shear strength ( $S_p$ ) is proposed as:

$$S_p = \left( \frac{a_0}{2} + \sum_{n=1}^3 \left[ a_n \cos\left( \frac{2n\pi \frac{T}{2\pi} \cos^{-1} \left[ \frac{-4a_2 + \sqrt{16a_2^2 - 48a_1a_3 + 144a_3^2}}{24a_3} \right]}{T} \right) \right] \right) \tan(\varphi) + c \quad (6)$$

The model coefficients including Fourier coefficients ( $a_n$ ), cohesion ( $C$ ) and angle of friction ( $\varphi$ ) are determined according to the measured data for various test conditions such as the cable type and pre-tension. Generally, the values of Fourier coefficients showed a decreasing trend with increasing the number of Fourier coefficients.

Equation 6 determines the total shear strength of reinforced concrete blocks. This consists of cable bolt shear strength and the additional shear force generated by the concrete surface friction. In order to obtain the pure shear strength of the cable bolt, the frictional term should be quantified and subsequently deducted from the total shear strength as indicated by equation 6.

The frictional force generated in the process of shearing follows the Coulomb tribological equation as:

$$S = N \tan(\varphi_b) \quad (7)$$

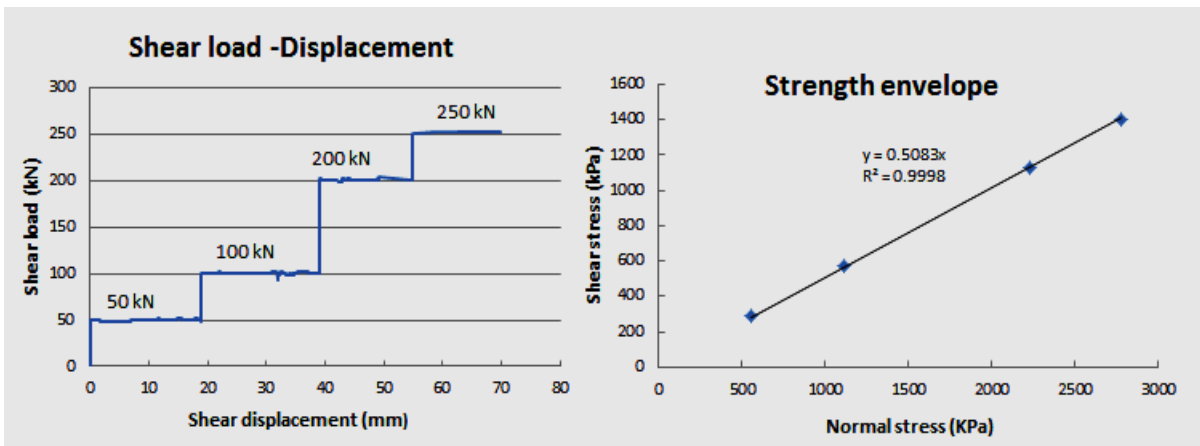
where,  $\varphi_b$  is the concrete surface basic friction angle determined by tilt testing.

Deducting equation 7 from equation 6, the pure shear strength of cable bolt ( $S_p^b$ ) is obtained as:

$$S_p^b = \left( \frac{a_0}{2} + \sum_{n=1}^3 a_n \cos\left( \frac{2n\pi \frac{T}{2\pi} \cos^{-1} \left[ \frac{-4a_2 + \sqrt{16a_2^2 - 48a_1a_3 + 144a_3^2}}{24a_3} \right]}{T} \right) \right) [\tan(\varphi) - \tan(\varphi_b)] + c \tag{8}$$

**Concrete surface basic friction angle**

Double shearing test (Aziz *et al.*, 2015b), without cable bolt as the reinforcing element, was carried out to determine the concrete surface basic friction angle. The normal load subjected to concrete blocks started with 50 kN and increased incrementally every 20 mm, reaching to 250 kN at the end of the test. The value of shear load against shear displacement was measured and subsequently incorporated to calculate the concrete surface basic friction angle as shown in Figure 5. The basic friction angle was indicated as 26.94°.



**Figure 5: test results of the concrete blocks sliding test**

By introducing the value of basic friction angel in Equation 8, the pure shear strength of cable bolt is obtained as:

$$S_p^b = \left( \frac{a_0}{2} + \sum_{n=1}^3 a_n \cos\left( \frac{2n\pi \frac{T}{2\pi} \cos^{-1} \left[ \frac{-4a_2 + \sqrt{16a_2^2 - 48a_1a_3 + 144a_3^2}}{24a_3} \right]}{T} \right) \right) [\tan(\varphi) - \tan(26.94^\circ)] + c \tag{9}$$

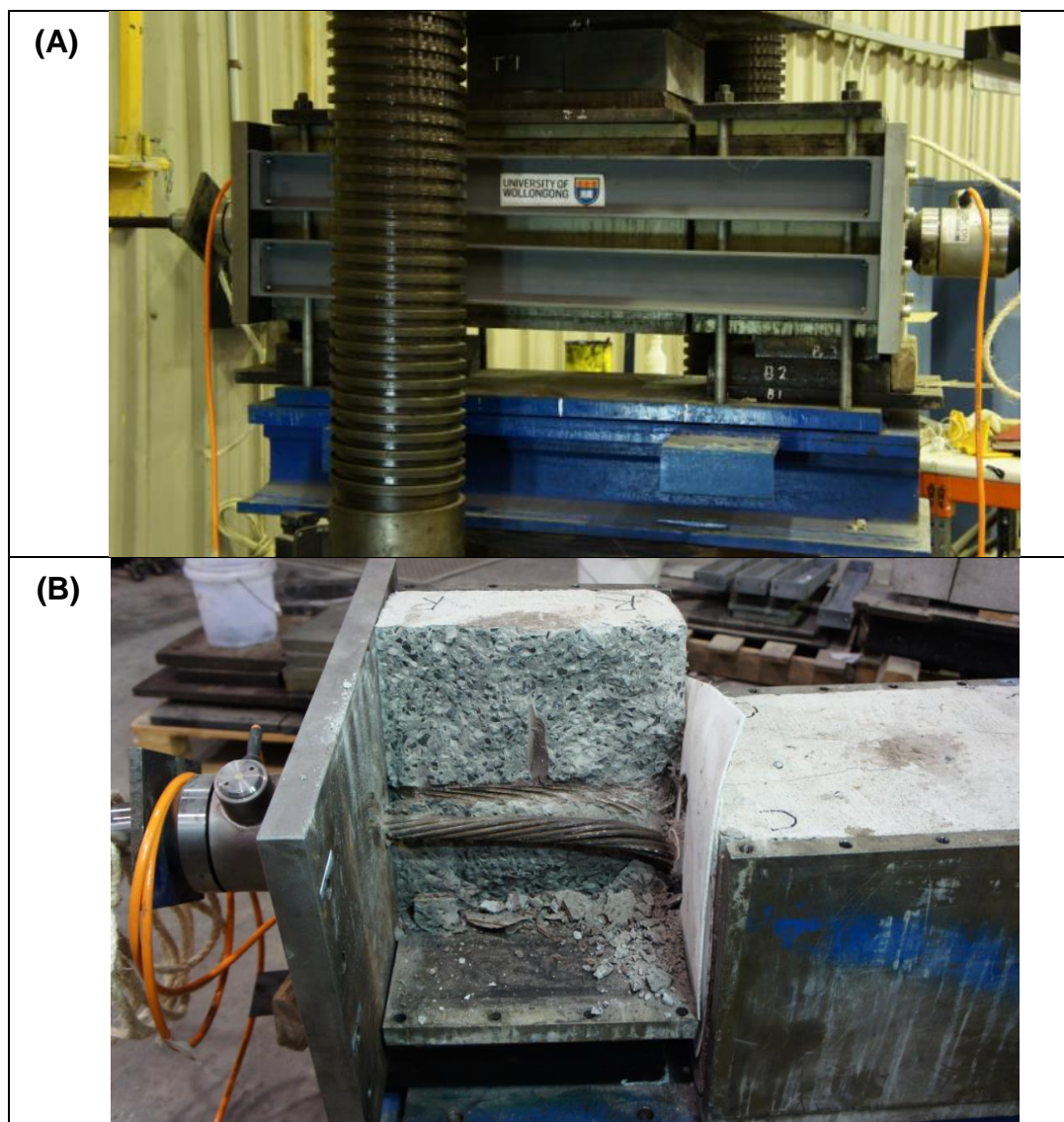


## Model calibration

The coefficients in equation 9 were calibrated for various conditions of cable type, pre-tension value and bonding agent incorporating the experimental data reported by Aziz *et al.*, (2015b) and listed in Table 1.

## MODEL VERIFICATION

To verify the proposed equation for the pure shear strength of cable bolts, two new double shear tests were undertaken. In one test the concrete surfaces were maintained in contact with each other and in the other without, that is no frictional resistance. In both tests various parameters, such as pretension load, grout type and concrete strength were kept constant. To achieve cable bolt shearing without contact between concrete blocks, the double shear apparatus was modified by installing two lateral braces on each side of the assembly as shown in Figure 6a to impede subjecting normal load on concrete blocks during shearing. To further assure no friction between concrete blocks, a pair of Teflon sheets with negligible friction coefficient was introduced between concrete joints as illustrated in Figure 6b. Table 2 compares the values of the pure shear strength of cable bolts obtained from the proposed equation and experiments. It is clear that the experimental test result is reasonably close with the mathematical equation modelling.



**Figure 6: Up to date double shear instrument (a) the whole assembly inside compression machine (b) Teflon sheet layers between concrete blocks**

**Table 1a: list of tested cables and the test environment Aziz et al., (2015b)**

Test No.	Cable Bolt Properties					Drill bit (mm)	Bonding agent	Pre-tension load (kN)/Peak axial load	Peak shear load (kN) [½ double shear]
	Product name	Cable $\phi$ (mm)	Wire geometry	Cable cross-section	Cable geometry				
1	Superstrand	21.8	Spiral	19 wire, PC strand	Non-birdcaged	28	Oil based resin	250	558
2	Superstrand	21.8	Plain	19 wire, PC strand	Non-birdcaged	28	Oil based resin	250	628
3	TG	28	Spiral	9 wires, hollow centre	Non-birdcaged	42	TD80 Grout	250	604
4	SUMO	28	Spiral	9 wires, hollow centre	35mm birdcage	42	TD80 Grout	250	414
5	SUMO	28	Spiral	9 wires, hollow centre	35mm birdcage	42	TD80 Grout	100	488
6	Plain SUMO	28	Plain	9 wires, hollow centre	35mm birdcage	42	TD80 Grout	250	711
7	Plain SUMO	28	Plain	9 wires, hollow centre	35mm birdcage	42	TD80 Grout	100	659
8	Gardford twin-strand	15.2	Plain	2 x 7 wire, PC strand	25mm Bulbs	55	BU100 Grout	0	501

**Table 1b: Model coefficients for different types**

Test No.	$a_0$	$a_1$	$a_2$	$a_3$	$\phi$	$c$
1	624.59	-53.97	-28.72	25.73	52.13	8.82
2	619.70	-7.87	-77.06	65.73	51.41	0.27
3	636.82	-67.87	-14.88	18.57	37.53	0.16
4	387.59	83.53	-36.68	-5.05	51.23	67.8
5	335.31	-27.32	-62.84	40.02	61.7	0
6	534.76	3.47	-75.64	55.49	59.56	12.66
7	449.78	-136.34	16.39	-3.91	61.33	0.44
8	235.38	-157.50	42.83	-4.21	47.61	137.89

**Table 2a: Comparison between the proposed model for the pure shear strength of cable bolts and experimental data**

Test No.	Product type	Bonding agent	Pre-tension load (kN)	Peak shear load per face (kN)	Friction between surfaces
9	Plain	Strata binder HS	5	645.64	with
10	Plain	Strata binder HS	5	442.16	without

**Table 2b: Determination of shear load by the model**

Test	$a_0$	$a_1$	$a_2$	$a_3$	Model normal load (kN)	Tan $\phi$	Tan 26.94°	$c$ (kN)	Measured peak shear load per face (kN)
Plain superstrand with 5 kN pre-tension load (with friction)	324.77	182.37	18.65	3.04	366.316	1.47	0.508	88.61	441.006



---

## CONCLUSIONS

- A new mathematical model is developed to calculate pure shear strength of cable bolts. The model was tested against the experimental data. The calculated shear failure load was in close agreement with the experimental test results. The model can also be used for other types of tendons used for ground reinforcement.
- The modified double shear apparatus that is capable of determining pure shear strength of the tendons alone was successfully tested. The initial test was undertaken using a cable bolt and further experimental studies are planned for testing of different marked cables used in Australia for both civil and mining engineering constructions.

## REFERENCES

- British Standard BS 7861- Parts 1 and 2, 1996. Strata Reinforcement support system components used in Coal Mines-Part 1. Specification for rock bolting and Part 2: Specification for Flexible systems for roof reinforcement.
- Aziz, N, Pratt, D and Williams, R, 2003. Double shear testing of bolts, *Coal Operators' Conference*. - Wollongong : University of Wollongong, pp 154-161. <http://ro.uow.edu.au/coal/172/>
- Aziz, N, Jalalifar, H and Hadi, M, 2005. The effect of resin thickness on bolt-grout-concrete interaction, in shear , *Coal Operators' Conference*. - Wollongong : University of Wollongong, pp 3-9. <http://ro.uow.edu.au/coal/64/>
- Craig, P and Aziz, N, 2010. Shear testing of 28 mm Hollow Strand "TG" Cable Bolt, *10th Underground Coal operators Conference, Wollongong, February 11/12, pp171-179, (Ed.N Aziz and Jan Nemcik, 375 p)*. [<http://ro.uow.edu.au/coal/303/>]
- Aziz, N, Heemann, K, Nemcik, J and Mayer, S, 2014. Shear strength properties of Hilti plain and indented strand cable bolts, in *proceedings Coal Operators Conference (Coal 2014)*, Wollongong, February 12-14, ISBN 978 1 925100 02 0, pp156-162 (Eds. N Aziz, B Kinninmonth). [<http://ro.uow.edu.au/coal/509/>]
- Aziz, N, Mirzaghobanali, A, Heemann, K, Nemcik, J and Mayer, S, 2015a. Shear strength properties of plain and spirally profiled cable bolts, *Canadian Geotechnical Journal*, 52(10): 1490-1495, 10.1139/cgj-2014-0504.
- Rasekh, H, Aziz, N, Nemcik, J, Mirza, A and Li, X, 2015. An experimental study on the contact surface area of cabled bolted strata, *15<sup>th</sup> Coal Operators' Conference*, pp 168-174 (Eds. N Aziz, B Kinninmonth). <http://ro.uow.edu.au/coal/561/>
- Li, X, Nemcik, J, Mirzaghobanali, A, Aziz, N and Rasekh, H, 2015a. Analytical model of shear behaviour of a fully grouted cable bolt subjected to shearing, *International Journal of Rock Mechanics and Mining Sciences*, Volume 80, December 2015, Pages 31–39.
- Li X, Aziz, N, Mirzaghobanali, A, Nemcik, J, 2015b. Behavior of Fiber Glass Bolts, Rock Bolts and Cable Bolts in Shear, *Rock Mechanics and Rock Engineering*, DOI: 10.1007/s00603-015-0907-7.