

2011

Understanding the α -crystallin cell membrane conjunction

Shih-Ping Su

University of Wollongong

Jason D. McArthur

University of Wollongong, jasonm@uow.edu.au

Michael G. Friedrich

Roger J. W Truscott

University of Wollongong, rjw@uow.edu.au

J. A. Aquilina

University of Wollongong, aquilina@uow.edu.au

Publication Details

Su, S., McArthur, J. D., Friedrich, M. G., Truscott, R. J. W. and Aquilina, J. Andrew. (2011). Understanding the α -crystallin cell membrane conjunction. *Molecular Vision*, 17 2798-2807.

Understanding the α -crystallin cell membrane conjunction

Abstract

PURPOSE. It is well established that levels of soluble α -crystallin in the lens cytoplasm fall steadily with age, accompanied by a corresponding increase in the amount of membrane-bound α -crystallin. Less well understood, is the mechanism driving this age-dependent membrane association. The aim of this study was to investigate the role of the membrane and its associated proteins and peptides in the binding of α -crystallin.

METHODS. Fibre cell membranes from human and bovine lenses were separated from soluble proteins by centrifugation. Membranes were stripped of associated proteins with successive aqueous, urea and alkaline solutions. Protein constituents of the respective membrane isolates were examined by SDS-PAGE and Western immunoblotting. Recombinant α A- and α B-crystallins were fluorescently-labeled with Alexa350[®] dye and incubated with the membrane isolates and the binding capacity of membrane for α -crystallin was determined.

RESULTS. The binding capacity of human membranes was consistently higher than that of bovine membranes. Urea- and alkali-treated membranes from the nucleus had similar binding capacities for α A-crystallin, which were significantly higher than both cortical membrane extracts. α B-Crystallin also had a higher affinity for nuclear membrane. However, urea-treated nuclear membrane had three times the binding capacity for α B-crystallin as compared to the alkali-treated nuclear membrane. Modulation of the membrane-crystallin interaction was achieved by the inclusion of an N-terminal peptide of α B-crystallin in the assays, which significantly increased the binding. Remarkably, following extraction with alkali, full length α A- and α B-crystallins were found to remain associated with both bovine and human lens membranes.

CONCLUSIONS. Fiber cell membrane isolated from the lens has an inherent capacity to bind α -crystallin. For α B-crystallin, this binding was found to be proportional to the level of extrinsic membrane proteins in cells isolated from the lens nucleus, indicating these proteins may play a role in the recruitment of α B-crystallin. No such relationship was evident for α A-crystallin in the nucleus, or for cortical membrane binding. Intrinsic lens peptides, which increase in abundance with age, may also function to modulate the interaction between soluble α -crystallin and the membrane. In addition, the tight association between α -crystallin and the lens membrane suggests that the protein may be an intrinsic component of the membrane structure.

Keywords

CMMB

Disciplines

Life Sciences | Physical Sciences and Mathematics | Social and Behavioral Sciences

Publication Details

Su, S., McArthur, J. D., Friedrich, M. G., Truscott, R. J. W. and Aquilina, J. Andrew. (2011). Understanding the α -crystallin cell membrane conjunction. *Molecular Vision*, 17 2798-2807.

Title of Paper:

Understanding the α -crystallin cell membrane conjunction

Authors:

Shih-Ping Su^{1, 2}, Jason D. McArthur¹, Michael G. Friedrich², Roger J.W. Truscott² and J. Andrew Aquilina¹

Institutes:

¹ School of Biological Sciences, University of Wollongong, Wollongong, NSW, Australia 2522

² Save Sight Institute, University of Sydney, GPO Box 4337, Sydney, NSW, Australia 2001

Corresponding Authors:

J. Andrew Aquilina

School of Biological Sciences, University of Wollongong, Wollongong, NSW, Australia 2522

aquilina@uow.edu.au

Roger J.W. Truscott

Save Sight Institute, University of Sydney, GPO Box 4337, Sydney, NSW, Australia 2001

rjwt@eye.usyd.edu.au

Email Addresses of Authors:

Shih-Ping Su, sps55@uowmail.edu.au; Jason McArthur, jasonm@uow.edu.au; Roger Truscott, rjwt@eye.usyd.edu.au; Andrew Aquilina, aquilina@uow.edu.au

Abstract

PURPOSE. It is well established that levels of soluble α -crystallin in the lens cytoplasm fall steadily with age, accompanied by a corresponding increase in the amount of membrane-bound α -crystallin. Less well understood, is the mechanism driving this age-dependent membrane association. The aim of this study was to investigate the role of the membrane and its associated proteins and peptides in the binding of α -crystallin.

METHODS. Fibre cell membranes from human and bovine lenses were separated from soluble proteins by centrifugation. Membranes were stripped of associated proteins with successive aqueous, urea and alkaline solutions. Protein constituents of the respective membrane isolates were examined by SDS-PAGE and Western immunoblotting. Recombinant α A- and α B-crystallins were fluorescently-labeled with Alexa350[®] dye and incubated with the membrane isolates and the binding capacity of membrane for α -crystallin was determined.

RESULTS. The binding capacity of human membranes was consistently higher than that of bovine membranes. Urea- and alkali-treated membranes from the nucleus had similar binding capacities for α A-crystallin, which were significantly higher than both cortical membrane extracts. α B-Crystallin also had a higher affinity for nuclear membrane. However, urea-treated nuclear membrane had three times the binding capacity for α B-crystallin as compared to the alkali-treated nuclear membrane. Modulation of the membrane-crystallin interaction was achieved by the inclusion of an N-terminal peptide of α B-crystallin in the assays, which significantly increased the binding. Remarkably, following extraction with alkali, full length α A- and α B-crystallins were found to remain associated with both bovine and human lens membranes.

CONCLUSIONS. Fiber cell membrane isolated from the lens has an inherent capacity to bind α -crystallin. For α B-crystallin, this binding was found to be proportional to the level of extrinsic membrane proteins in cells isolated from the lens nucleus, indicating these proteins may play a role in the recruitment of α B-crystallin. No such relationship was evident for α A-crystallin in the nucleus, or for cortical membrane binding. Intrinsic lens peptides, which increase in abundance with age, may also function to modulate the interaction between soluble α -crystallin and the membrane. In addition, the tight association between α -crystallin and the lens membrane suggests that the protein may be an intrinsic component of the membrane structure.

Introduction

The human lens grows continuously throughout life *via* the addition of new fibre cells on top of preexisting ones. This process leads to the formation of two lens regions referred to as the nucleus, consisting of fibre cells formed *in utero*, and an ever-expanding cortex which consists of fibre cells formed post-natally [1, 2]. Lens fibre cells contain a high concentration of the structural proteins α -, β - and γ -crystallins, which contribute significantly to the transparent and refractive properties of the lens. α -Crystallin, which is composed of subunits αA and αB , functions additionally as a molecular chaperone [3, 4]. As there is little to no protein turnover in mature lens fibre cells [5], the long-term transparency of the lens is dependent on the ability of α -crystallin to sequester unfolded proteins and maintain them in soluble chaperone-client complexes.

Lens proteins undergo a multitude of posttranslational modifications during aging, which over time contribute to the unfolding and denaturation of crystallins [6-12]. With age, the level of unfolded proteins eventually exceeds the chaperone capacity of α -crystallin in the lens, such that by 40 years, all free α -crystallin in the lens has been utilized [13-15]. Subsequently, the level of water-insoluble and high molecular weight crystallin aggregates in the lens increases significantly [16-19]. Large-scale binding of α -crystallin to lens membranes has also been documented in the lens with age [20-22], and this has been hypothesized to contribute to the development of nuclear cataract by occluding membrane pores, thus leading to the formation of a barrier to diffusion [22-24].

The association between crystallins and lens fibre cell membranes is believed to be an important process by which crystallin insolubilization occurs in the aging lens [22, 25, 26]. Chandrasekher and Cenedella [25] showed that essentially all water-insoluble crystallins in old human lenses are membrane-bound. α -Crystallin, in particular, has a strong affinity towards lens membrane [20, 21, 27-30], leading to the suggestion that the overall increase in the membrane binding of crystallins in the lens is due to other crystallins associating with membrane-bound α -crystallin [27]. However, little is currently known about the mechanism(s) by which α -crystallin associates with the cellular membrane, and how age-related changes to the membrane compositions may affect crystallin-binding.

In this study, we examined the protein constituents of bovine and human lens membranes after successive removal of extrinsic protein. We report the effects of residual membrane-associated proteins on the binding behavior of recombinant α -crystallin and the effect upon this binding of a known intrinsic lens peptide.

Methods

Isolation of bovine and human lens fibre cell membranes

A total of 142 human lenses, aged between 54-84 years, were obtained from donors at the Lions New South Wales Eye Bank (Sydney, Australia). Tissue was handled in accordance with the tenets of the Declaration of Helsinki. Fresh bovine lenses were obtained from a local abattoir. All lenses were stored at -80 °C prior to dissection.

Lenses were separated into cortical and nuclear regions using a 4.5 mm diameter trephine. A cold scalpel was used to remove 1 mm of tissue from each end of the resulting cylindrical center (nucleus). The cortical and nuclear tissues from human lenses and the cortical tissues from the bovine lenses were used in this study. Lens membranes were obtained using methods published by Russell *et al.* [31] with minor modifications. Briefly, lens tissues were homogenized in 7 times (w/w) of buffer A (50 mM Tris-HCl, 5 mM EDTA, 10 mM β -mercaptoethanol, 0.2% sodium azide, pH 7.4) and incubated at room temperature for 10 minutes. The homogenate was centrifuged at $15000 \times g$ for 20 minutes at 4 °C, and the supernatant was discarded. The pellet was re-homogenized in buffer A and centrifuged at $15000 \times g$ for another 20 minutes. The resulting pellet was washed with water (MilliQ™), centrifuged and re-homogenized in buffer B (50 mM Tris-HCl, 7 M urea, pH 7.4). The urea concentration in the homogenate was diluted to 3.5 M with water and the homogenate was centrifuged at $15000 \times g$ for 20 minutes. This extraction procedure using buffer B was repeated and the resulting pellet was washed three times with water to give the urea-treated membrane. To obtain the alkali-treated membrane, a portion of the urea-treated membrane pellet was re-homogenized in solution containing 0.1 M NaOH, 1 mM β -mercaptoethanol. The homogenate was incubated on ice for 15 minutes and then centrifuged at $15000 \times g$ for 20 minutes at 4 °C. The pellet was further washed with 5 mM phosphate (pH 8.0), followed by two washes with water.

Isolated membranes were re-suspended in binding buffer (137 mM NaCl, 2.7 mM KCl, 4.3 mM Na_2HPO_4 , 1.4 mM K_2HPO_4 , 5 mM MgCl_2 , pH 7.3). Quantification of membrane samples was achieved by weighing freeze-dried aliquots of the membrane suspension using an Excellence XS105 dual-range analytical balance (Mettler Toledo, Switzerland). The concentration of membrane tissue (mg/ml) in the suspension was calculated by averaging at least four separate aliquots. Light absorbance of membrane samples at different wavelengths (220-850 nm) was measured using a POLARstar Omega multifunction microplate reader (BMG Labtech, Offenburg, Germany).

SDS-PAGE and Western immunoblot analysis of bovine and human lens membranes

Proteins in the bovine and human lens membrane preparations were examined using SDS-PAGE and Western immunoblots. Samples were homogenized in SDS-PAGE loading buffer (60 mM Tris-HCl, 1% SDS, 1% β -mercaptoethanol, 10% glycerol, 0.01% bromophenol blue, pH 6.8) and incubated at

room temperature for 2 h prior to loading onto 12% SDS-PAGE gels. Heating of the sample was avoided as elevated temperatures can damage the structure of intrinsic membrane proteins [31]. All SDS-PAGE gels were stained with Coomassie Blue R (Sigma-Aldrich, St. Louis, Missouri, USA). For Western immunoblot analysis, antibodies which specifically recognize human and bovine filensin, phakinin, α A- and α B-crystallins were used and were diluted to their working concentrations using PBS/T (137 mM NaCl, 2.7 mM KCl, 12.5 mM Na₂HPO₄, 1.8 mM KH₂PO₄, 0.05% (v/v) Tween 20, pH 7.4) containing 0.5% (w/v) skim milk powder. Proteins separated by SDS-PAGE were transferred onto polyvinylidene fluoride membranes at 30 V overnight at 4 °C using the Mini Trans-Blot system (Bio-Rad, Hercules, California, USA). Membranes were blocked for 1 h at room temperature in PBS/T containing 5% (w/v) skim milk powder. After three 10 min washes with PBS/T, the membranes were incubated with either a 1:1000 dilution of polyclonal anti- α A-crystallin antibody (ab69552, Abcam, Cambridge, Massachusetts, USA), a 1:1000 dilution of polyclonal anti- α B-crystallin antibody (ab13497, Abcam), a 1:1500 dilution of monoclonal anti-filensin antibody (F1043, Sigma-Aldrich), or a 1:5000 dilution of monoclonal anti-vimentin antibody (V6389, Sigma-Aldrich) for 90 min at room temperature. Following another three 10 min washes with PBS/T, the membranes were incubated for 1 h with a 1:1500 dilution of anti-rabbit immunoglobulin G (IgG) horseradish peroxidase (HRP) conjugate (65-6120, Invitrogen, Carlsbad, California, USA) for anti- α A-crystallin and anti- α B-crystallin blots, or a 1:2500 dilution of goat anti-mouse IgG HRP conjugate (SAB-100J, Stressgen, Ann Arbor, Michigan, USA) for anti-filensin and anti-vimentin blots. Excess secondary antibodies were removed by three 10 min washes with PBS/T, and the blots were developed in 100 mM Tris-HCl (pH 7.6) containing 1.4 mM diaminobenzidine and 0.015% (v/v) hydrogen peroxide.

Quantification of phospholipids

Phospholipids were quantified by mass spectrometry as described previously [32]. To identify each phospholipid, a combination of precursor and neutral loss scans were used to detect the head-group of each phospholipid class [33]. Each phospholipid class was quantified by comparing their peak areas with the appropriate internal standard after correction for isotope contributions [32]. The percentage of each phospholipid was then determined by its contribution to the total phospholipid.

Overexpression and purification of recombinant human α A- and α B-crystallins

The pET23d(+) plasmid, containing human wild-type α A-crystallin gene, was a gift from Prof. J. M. Petrasch (Washington University, St. Louis, USA). The pET24d(+) plasmid (Novagen, Madison, Wisconsin, USA), containing human wild-type α B-crystallin gene, was a gift from Prof. W. de Jong (University of Nijmegen, Nijmegen, The Netherlands). Plasmids were transformed into electro-competent *Escherichia coli* BL21 cells by electroporation using a GenePulser II system (Bio-Rad). 900 mL of LB stocks (1% tryptone, 0.5% yeast extract, 1% NaCl) that contained ampicillin (100 μ g/mL) or kanamycin (50 μ g/mL) were inoculated with 100 mL of overnight liquid

cultures of BL21/pET23d- α A or BL21/pET24d- α B cells, respectively, and grown at 37 °C under vigorous shaking. The culture was induced with 10 mL of 50 mM isopropyl β -D-1-thiogalactopyranoside after reaching an optical density of \sim 0.5 at 600 nm, and further incubated for 3 h at 37 °C. Cells were harvested by centrifugation, and the expressed proteins were isolated using methods by Horwitz *et al.* [34]. Recombinant human α A and α B-crystallin were purified from the cell lysates using anion-exchange chromatography (HiPrep 16/10 DEAE FF column; GE Healthcare, Little Chalfont, United Kingdom), followed by size-exclusion chromatography (HiPrep 26/60 Sephacryl S-300 column; Amersham Biosciences, Uppsala, Sweden).

Conjugation of Alexa350[®] to α -crystallin subunits

Alexa350[®] fluorescent tag (410 Da) was conjugated to recombinant α A- and α B-crystallins using an Alexa Fluor[®] 350 Protein Labeling Kit (A10170, Molecular Probes, Carlsbad, California, USA), in accordance with the manufacturer's instructions. Purified Alexa350[®]-conjugated α A- and α B-crystallins were measured using absorbance readings at 280 nm and 346 nm (A_{280} and A_{346}) on a UVmini-1240 UV-VIS spectrophotometer (Shimadzu, Kyoto, Japan). The protein concentration and the degree of binding were determined using the following equations:

$$[\text{protein}] = \frac{A_{280} - (A_{346} \times 0.19)}{\epsilon_{\text{protein}}} \times \text{dilution}$$

(Eq. 1)

$$\text{mol of dye/mol of subunit} = \frac{A_{346} - \text{dilution}}{19000 \times [\text{protein}]}$$

(Eq. 2)

Where 0.19 is a correction factor to account for absorption of Alexa350[®] at 280 nm, 19000 is the molar extinction coefficient for Alexa350[®] and $\epsilon_{\text{protein}}$ is the molar extinction coefficient for α -crystallin.

Membrane binding measurements

Alexa350[®]-conjugated α A- and α B-crystallins were incubated with bovine and human lens membranes in binding buffer at 37 °C for 6 h, based on protocols established previously [30]. Control assays were set up by replacing Alexa350[®]- α -crystallin subunits with unlabeled α -crystallin subunits. All assays were performed in triplicate. After incubation, samples were centrifuged at 14000 \times g for 30 minutes at 4 °C. The pellets were re-suspended in 30 μ L of binding buffer and centrifuged again at 14000 \times g for 30 minutes at 4 °C. The supernatants from both centrifugations were pooled together. The resulting pellets, which contained the membrane, and bound Alexa350[®]- α -crystallin subunits, were re-suspended in a volume of binding buffer equivalent to that of the combined supernatants.

Both the supernatants and the re-suspended pellets were transferred to 96-well polypropylene black microplates (Greiner Bio-One, Frickenhausen, Germany), and the fluorescence reading (F) of the samples was measured using a FLUOstar Optima multifunction microplate reader (BMG Labtech). The excitation and emission filters were set at 320-340 and 430-450 nm respectively. The degree of binding (\bar{X}) was determined by the following formula, where background fluorescence readings were obtained from control assays (using unlabeled α -crystallin):

$$\bar{X} = \frac{F_{\text{pellet}} - F_{\text{pellet background}}}{(F_{\text{pellet}} - F_{\text{pellet background}}) + (F_{\text{supernatant}} - F_{\text{supernatant background}})}$$

(Eq. 3)

The amount of α -crystallin subunits bound to the membranes was calculated by multiplying the total mass of Alexa350[®]- α -crystallin subunits used in the assay by the degree of binding (\bar{X}).

Effect of endogenous crystallin peptides on the membrane binding of α -crystallin

Peptide α B₁₋₁₈ (Ac-MDIAIHHPWIRRPFFPFH) was purchased from Biomatik (Cambridge, Ontario, Canada) with sample purity $\geq 95\%$. Peptide γ S₁₆₇₋₁₇₈ (SPAVQSFRRIVE) was purchased from Peptide 2.0 (Chantilly, Virginia, USA) with sample purity of $\geq 91\%$. Peptides were solubilised in binding buffer to give a 4 g/L stock solution. Peptides were drawn from the stock solution and incubated with human lens membranes (80 μ g) for 30 min at 37 °C. These were then incubated for 6 h at 37 °C in the presence of 24 μ g of Alexa350[®]-conjugated α A- or α B-crystallin, or 24 μ g of unlabeled α A- or α B-crystallin as negative controls. Binding assays were carried out as described previously. Peptide interaction data were analyzed using unpaired two-sample t -test.

Results

Analysis of proteins associated with lens fibre cell membranes

Bovine lens membranes

SDS-PAGE analysis of the urea-treated bovine (BU) membrane (Figure 1) showed that multiple proteins, ranging from 10 kDa to above 200 kDa, remain bound to the bovine lens membrane after the combined extractions of Tris- and urea-containing buffers. α -Crystallin subunits A and B (~20 kDa) were the predominant species detected, as shown by Western immunoblots (Figure 1). In contrast, the alkali-treated bovine (BA) lens membrane extract contained no protein that could be detected by Coomassie staining.

Western immunoblots (Figure 1) revealed that both α A- and α B-crystallins (both ~20 kDa) were present in the BU and BA lens membranes, with a significant amount of higher molecular weight immuno-reactive protein also detected in the BU. Following further treatment of the membranes with alkali, α -crystallin subunits and a ~50 kDa α A species of protein remained (Figure 1). Of the two major intermediate filament proteins of the lens fibre cell cytoskeleton, intact filensin (115 kDa) and multiple cleavage products of filensin were detected only in the BU membrane, while vimentin (54 kDa) was present in both bovine lens membrane preparations (Figure 1).

Human lens membranes

SDS-PAGE analysis (Figure 2) revealed human lens membrane to be very different from bovine lens membrane. Three proteins of ~20 kDa, 22 kDa and 26 kDa, which correspond to α A/ α B-crystallin, major intrinsic protein (MIP) 22 and MIP26 respectively, were present in all human lens membrane preparations (Figure 2). The urea-treated membrane preparations, particularly urea-treated nucleus (NU) membrane, showed noticeable smearing down the length of the gel. In addition, a low molecular weight (LMW) band which migrated with the dye-front was observed, which was particularly intense in the urea extracts. The presence of this band indicates that significant amounts of LMW peptides, likely derived from crystallins [35-37], remain tightly associated with the lens membranes after extraction with urea.

Western immunoblots detected intact α A- and α B-crystallins (~20 kDa) in all human lens membrane preparations, even after the membranes had been stripped of the majority of extrinsic proteins with strong alkali solution (Figure 2). A diffuse band at ~43 kDa was also present in each of the α A-crystallin blots, with additional smearing between 70 kDa and 130 kDa, being particularly noticeable in the alkali-treated nuclear (NA) preparation. On the anti- α B-crystallin blots, extensive smearing was observed in the lanes of the urea-treated membranes, some of which may be attributed to non-specific immunoreactivity as described above. Interestingly, a variety of smaller α B-crystallin products less than 20 kDa remained bound to the lens membrane after urea-treatment (Figure 2). Most of the anti- α B reactive proteins were removed upon treatment with 0.1 M NaOH,

except for some intense smearing from 90-150 kDa. Smearing was also observed on the anti-filensin blots of the urea-treated human lens membrane, while no filensin was detected in the alkali-treated membranes (Figure 2). Vimentin was only detected in the cortical human lens membrane preparations (Figure 2).

Binding of α -crystallin subunits to lens membranes

Purification of Alexa350[®]- α -crystallin subunits

Recombinant human α A- and α B-crystallins were over-expressed in *E. coli* and conjugated to Alexa350[®]. On average, 0.56 ± 0.07 mol of Alexa350[®] was attached per mol of α A-crystallin, and 0.44 ± 0.36 mol of Alexa350[®] per mol of α B-crystallin.

Bovine lens membrane binding

In order to compare the binding of α -crystallins to bovine and human lens membranes, we pre-labeled recombinant α A- and α B-crystallins with Alexa350[®], whose excitation and emission characteristics are spectrally distinct from aromatic amino acids. Binding assays using BU and BA membranes displayed saturable binding behavior (Figure 3), which allowed us to calculate the membrane binding capacity from the asymptote of each curve (Table 1). The binding capacities for α A-crystallin were 28.1 ± 2.4 ng α A/ μ g BU membrane, and 19.5 ± 0.8 ng α A/ μ g BA membrane. The binding capacities for α B-crystallin were lower, being 19.1 ± 1.1 ng α B/ μ g BU membrane and 6.0 ± 0.6 ng α B/ μ g BA membrane.

Human lens membrane binding

All of the assays using human lens membranes displayed saturable binding of the Alexa350- α -crystallins (Figure 4), and the binding capacity was greater, on the whole, than bovine lens membranes (Table 1). Comparing regions, a matched treatment analysis revealed that nuclear membrane had significantly greater binding capacity for the α -crystallins than cortical membrane ($P < 0.05$). Matched region analysis indicated the difference in binding due to solvent treatment is less significant ($P > 0.1$). For example, α A-crystallin was observed to bind NU and NA membrane with less than 20% difference in capacity, while CU and CA displayed almost identical α A-crystallin binding capacity. α B-Crystallin, however, exhibited significantly greater binding to the NU membrane than the NA membrane (208.0 ± 13.1 ng / μ g compared with 67.0 ± 2.4 ng / μ g). This result strongly suggests that proteins removed from the nuclear membrane by the alkali treatment have a much higher affinity for α B-crystallin than the extrinsic proteins of the cortex membrane.

Membrane lipid analysis revealed no significant alteration in the ratios of the eight major classes (dihydro sphingomyelin, sphingomyelin, phosphatidylcholine, phosphatidylserine, ceramide, dihydroceramide, phosphatidylethanolamine and lysophosphatidylethanolamine) between the human membrane preparations used in these binding assays (Figure A1, Appendix I), demonstrating that membrane binding of α -crystallin was not influenced by changes to the proportion of individual membrane lipids. Human membrane preparations displayed no significant absorbance between 380-500 nm (Figure A2, Appendix II), indicating there would be minimal interference with the fluorescent signal emitted by the Alexa350[®] dye.

Effect of crystallin peptides on the membrane binding of α -crystallin subunits

In a recent study, we reported that crystallin peptides α B₁₋₁₈ and γ S₁₆₇₋₁₇₈ were present in human lenses across a broad age-range [36]. Santhoshkumar *et al.* [35] reported that peptide α B₁₋₁₈ possessed anti-chaperone activity against α -crystallin, while peptide γ S₁₆₇₋₁₇₈ had little effect. Peptide α B₁₋₁₈ was found to significantly increase the amount of membrane-bound α -crystallin subunits in all but the CU membranes (Figure 5). In the case of α A-crystallin, the addition of peptide α B₁₋₁₈ increased the binding by 59% (NU membrane), 72% (CA membrane) and 72% (NA membrane). Similar results were observed in binding assays using α B-crystallin, with the amount of membrane-bound α B-crystallin increasing by 61% (CA membrane) and 69% (NA membrane). However, peptide α B₁₋₁₈ did not give rise to a significant increase in binding of α B-crystallin to the urea-treated membranes (Figure 5B), possibly due to the amount of endogenous α B-crystallin that is present on this membrane preparation (Figure 2). The addition of peptide γ S₁₆₇₋₁₇₈ had a negligible effect on the binding of both α A- and α B-crystallins to all human lens membrane preparations (Figure 5).

Discussion

There is growing evidence that association with fibre cell membranes is an important process by which crystallins become water-insoluble in the lens [22, 25, 30]. This association may also contribute to the age-dependent loss of free α -crystallin [13-15]. In addition, large-scale binding of crystallin aggregates after middle age [22, 23] is implicated in the development of the lens barrier – a significant event in the human lens that is associated with subsequent cataractogenesis [24, 38, 39]. Building upon previous studies, where the membrane binding of α -crystallin was characterized using non-human lens tissues [26, 30, 40-44], here we determined the binding properties of α -crystallin to membranes isolated from both bovine and human lens tissues.

α A- and α B-crystallins were the dominant membrane-bound proteins in the bovine lens after extraction with urea, whereas the human membrane also contained significant amounts of aquaporin 0 (AQP0) (MIP26, MIP22), small peptides and, particularly in the nucleus, a complex mixture of cytoskeletal and crystallin proteins. Full-length α A- and α B-crystallins remained tightly associated with both the bovine and human lens membranes after extraction with 7 M urea, and remarkably, even after the alkali-treatment. The presence of α -crystallin after such vigorous treatment indicates that it is very tightly associated with, or even partially embedded in the fibre cell membrane. To our knowledge, this is the first evidence which suggests that α -crystallins may be an intrinsic component of the lens fibre cell membrane. Given the important role that α -crystallin has on the structural assembly of the beaded filaments [46, 47], the incorporation of α -crystallin into the fibre cell membrane structure may have functional significance regarding the stability and order of the lipid bilayer. Furthermore, fatty acid acylation, which confers membrane anchoring properties to proteins, and has been reported for lens AQP0 [45], may also contribute to the tight association between α -crystallin and the lens membrane, if α -crystallin subunits are acylated in a similar manner.

We observed that the level of α B-, but not α A-crystallin, binding to the bovine and human membranes was influenced by the extent to which the membrane had been stripped of extrinsic proteins. This may be due to the fact that α B-crystallin is a more potent chaperone at physiological temperatures (37-40 °C) compared to α A-crystallin [48], and that membrane-bound proteins represent potential chaperone targets. As the alkali-treated membranes were largely stripped of this membrane-bound protein, the interacting targets for α B-crystallin decreased significantly, thus lower binding capacity was observed. These results suggest that the mechanisms by which α A- and α B-crystallins associate with the cellular membrane are different; α A-crystallin may interact exclusively with membrane phospholipids, thereby being unaffected by the presence of extrinsic proteins on the membrane, whereas these proteins may act as conduits for α B-crystallin to bind to the membrane.

Membrane binding of both α A- and α B-crystallins was significantly increased in the presence of peptide α B₁₋₁₈. It has previously been reported that when mixed with wild-type α B-crystallin, peptide α B₁₋₁₈ increased the oligomeric size of the protein [49]. Thus, our results may reflect the fact that larger α -crystallin oligomers containing greater numbers of α -crystallin subunits are binding to the membrane. Considering that the emergence of this peptide in the lens nucleus [36] corresponds to the time when large-scale binding of α -crystallin to lens membrane is observed [22], this and other endogenous peptides [35, 36] may play a role in this process.

Previous studies into membrane binding of α -crystallin have produced conflicting outcomes. For example, Ifeanyi *et al.* [42] found that the association of α -crystallin to membranes was mainly due to the α A subunit. In contrast, Cobb and Petrash [30] suggested that α A and α B subunits have similar binding capacities to lens membranes. Typically, membrane binding studies were performed using non-human lens membranes. As the membrane binding of α -crystallin is affected by the presence of membrane-bound proteins, and endogenous peptides, the use of non-human tissue does not appear to represent a useful model for the aging human lens.

Recent studies have also shown that the lipid composition of human lens membrane differs considerably from that of other mammalian animals [32]. The levels of dihydrosphingomyelin and cholesterol are much higher in human lenses [32], and these hydrophobic components [50] could mimic the exposed hydrophobic residues on substrate proteins, with which α -crystallin is known to interact [51, 52]. Another characteristic of the human lens is that its phospholipids undergo major changes with age. The levels of glycerophospholipids in the nucleus of the lens decline steadily, such that by age 40, their content is negligible [53]. In contrast, the levels of ceramides and dihydroceramides in the lens nucleus increase approximately 100-fold during middle-age [53]. It is therefore possible that age-related changes to membrane phospholipids are influential in the binding of α -crystallin and the persistence of this versatile small heat-shock protein may also be an important component of the fibre cell membrane itself.

Acknowledgements:

This work was supported by the Australian Research Council (Grant DP0666847 to JAA and RJWT) and the National Health and Medical Research Council (Grant 514615 to JAA). JDM is supported by the National Health and Medical Research Council of Australia. S-PS was supported by a University of Wollongong Matching Scholarship.

References:

1. Garland DL, Duglas-Tabor Y, Jimenez-Asensio J, Datiles MB, Magno B. The nucleus of the human lens: demonstration of a highly characteristic protein pattern by two-dimensional electrophoresis and introduction of a new method of lens dissection. *Exp Eye Res* 1996; 62(3):285-91.
2. Kuszak JR, Zoltoski RK, Tiedemann CE. Development of lens sutures. *Int J Dev Biol* 2004; 48(8-9):889-902.
3. Horwitz J. Alpha-Crystallin can function as a molecular chaperone. *Proc Natl Acad Sci USA* 1992; 89(21):10449-53.
4. Rao PV, Huang QL, Horwitz J, Zigler JS, Jr. Evidence that alpha-crystallin prevents non-specific protein aggregation in the intact eye lens. *Biochim Biophys Acta* 1995; 1245(3):439-47.
5. Lynnerup N, Kjeldsen H, Heegaard S, Jacobsen C, Heinemeier J. Radiocarbon dating of the human eye lens crystallines reveal proteins without carbon turnover throughout life. *PLoS One* 2008; 3(1):e1529.
6. Hoehenwarter W, Klose J, Jungblut PR. Eye Lens Proteomics. *Amino Acids* 2006; 30:369–89.
7. Wilmarth PA, Tanner S, Dasari S, Nagalla SR, Riviere MA, Bafna V, et al. Age-related changes in human crystallins determined from comparative analysis of post-translational modifications in young and aged lens: does deamidation contribute to crystallin insolubility? *J Proteome Res* 2006; 5(10):2554-66.
8. Harrington V, McCall S, Huynh S, Srivastava K, Srivastava OP. Crystallins in water soluble-high molecular weight protein fractions and water insoluble protein fractions in aging and cataractous human lenses. *Mol Vis* 2004; 10:476-89.
9. Hanson SR, Hasan A, Smith DL, Smith JB. The major in vivo modifications of the human water-insoluble lens crystallins are disulfide bonds, deamidation, methionine oxidation and backbone cleavage. *Exp Eye Res* 2000; 71(2):195-207.
10. Truscott RJ, Zhu X. Presbyopia and cataract: a question of heat and time. *Prog Retin Eye Res* 2010; 29(6):487-99.
11. Aarts HJ, Lubsen NH, Schoenmakers JG. Crystallin gene expression during rat lens development. *Eur J Biochem* 1989; 183(1):31-6.
12. Su S-P, McArthur JD, Truscott RJ, Aquilina JA. Truncation, cross-linking and interaction of crystallins and intermediate filament proteins in the aging human lens. *Biochim Biophys Acta* 2011; 1814(5):647-56.
13. Heys KR, Friedrich MG, Truscott RJW. Presbyopia and heat: changes associated with aging of the human lens suggest a functional role for the small heat shock protein, alpha-crystallin, in maintaining lens flexibility. *Aging Cell* 2007; 6(6):807-15.
14. McFall-Ngai MJ, Ding LL, Takemoto LJ, Horwitz J. Spatial and temporal mapping of the age-related changes in human lens crystallins. *Exp Eye Res* 1985; 41(6):745-58.
15. Roy D, Spector A. Absence of low-molecular-weight alpha crystallin in nuclear region of old human lenses. *Proc Natl Acad Sci U S A* 1976; 73(10):3484-7.

16. Lampi KJ, Ma Z, Hanson SRA, Azuma M, Shih M, Shearer TR, et al. Age-related changes in human lens crystallins identified by two-dimensional electrophoresis and mass spectrometry. *Exp Eye Res* 1998; 67(1):31-43.
17. Srivastava OP, Srivastava K, Silney C. Levels of crystallin fragments and identification of their origin in water soluble high molecular weight (HMW) proteins of human lenses. *Curr Eye Res* 1996; 15(5):511-20.
18. Ma Z, Hanson SR, Lampi KJ, David LL, Smith DL, Smith JB. Age-related changes in human lens crystallins identified by HPLC and mass spectrometry. *Exp Eye Res* 1998; 67(1):21-30.
19. Fu SC, Su SW, Wagner BJ, Hart R. Characterization of lens proteins. IV. Analysis of soluble high molecular weight protein aggregates in human lenses. *Exp Eye Res* 1984; 38(5):485-95.
20. Boyle DL, Takemoto L. EM immunolocalization of alpha-crystallins: association with the plasma membrane from normal and cataractous human lenses. *Curr Eye Res* 1996; 15(5):577-82.
21. Cenedella RJ, Fleschner CR. Selective association of crystallins with lens 'native' membrane during dynamic cataractogenesis. *Curr Eye Res* 1992; 11(8):801-15.
22. Friedrich MG, Truscott RJ. Large-scale binding of alpha-crystallin to cell membranes of aged normal human lenses: a phenomenon that can be induced by mild thermal stress. *Invest Ophthalmol Vis Sci* 2010; 51(10):5145-52.
23. Friedrich MG, Truscott RJ. Membrane association of proteins in the aging human lens: profound changes take place in the fifth decade of life. *Invest Ophthalmol Vis Sci* 2009; 50(10):4786-93.
24. Truscott RJ. Age-related nuclear cataract-oxidation is the key. *Exp Eye Res* 2005; 80(5):709-25.
25. Chandrasekher G, Cenedella RJ. Protein associated with human lens 'native' membrane during aging and cataract formation. *Exp Eye Res* 1995; 60(6):707-17.
26. Cobb BA, Petrash JM. alpha-Crystallin chaperone-like activity and membrane binding in age-related cataracts. *Biochemistry* 2002; 41(2):483-90.
27. Grami V, Marrero Y, Huang L, Tang D, Yappert MC, Borchman D. alpha-Crystallin binding in vitro to lipids from clear human lenses. *Exp Eye Res* 2005; 81(2):138-46.
28. Tang D, Borchman D, Yappert MC, Cenedella RJ. Influence of cholesterol on the interaction of alpha-crystallin with phospholipids. *Exp Eye Res* 1998; 66(5):559-67.
29. Chandrasekher G, Cenedella RJ. Properties of alpha-crystallin bound to lens membrane: probing organization at the membrane surface. *Exp Eye Res* 1997; 64(3):423-30.
30. Cobb BA, Petrash JM. Characterization of alpha-crystallin-plasma membrane binding. *J Biol Chem* 2000; 275(9):6664-72.
31. Russell P, Robison WG, Jr., Kinoshita JH. A new method for rapid isolation of the intrinsic membrane proteins from lens. *Exp Eye Res* 1981; 32(4):511-6.
32. Deeley JM, Mitchell TW, Wei X, Korth J, Nealon JR, Blanksby SJ, et al. Human lens lipids differ markedly from those of commonly used experimental animals. *Biochim Biophys Acta* 2008; 1781(6-7):288-98.
33. Brugger B, Erben G, Sandhoff R, Wieland FT, Lehmann WD. Quantitative analysis of biological membrane lipids at the low picomole level by nano-electrospray ionization tandem mass

spectrometry. *Proceedings of the National Academy of Sciences* 1997; 94(6):2339-44.

34. Horwitz J, Huang Q-L, Ding L, Bova MP. Lens alpha-crystallin: chaperone-like properties. *Methods Enzymol* 1998; 290:365-83.

35. Santhoshkumar P, Udupa P, Murugesan R, Sharma KK. Significance of interactions of low molecular weight crystallin fragments in lens aging and cataract formation. *J Biol Chem* 2008; 283(13):8477-85.

36. Su S-P, McArthur JD, Aquilina JA. Localization of low molecular weight crystallin peptides in the aging human lens using a MALDI mass spectrometry imaging approach. *Exp Eye Res* 2010; 91(1):97-103.

37. Grey AC, Schey KL. Age-related changes in the spatial distribution of human lens alpha-crystallin products by MALDI imaging mass spectrometry. *Invest Ophthalmol Vis Sci* 2009; 50(9):4319-29.

38. Sweeney MHJ, Truscott RJW. An impediment to glutathione diffusion in older normal human lenses: a possible precondition for nuclear cataract. *Exp Eye Res* 1998; 67(5):587-95.

39. Truscott RJ. Age-related nuclear cataract: a lens transport problem. *Ophthalmic Res* 2000; 32(5):185-94.

40. Ifeanyi F, Takemoto L. Differential binding of alpha-crystallins to bovine lens membrane. *Exp Eye Res* 1989; 49(1):143-7.

41. Mulders JW, Stokkermans J, Leunissen JA, Benedetti EL, Bloemendal H, de Jong WW. Interaction of alpha-crystallin with lens plasma membranes. Affinity for MP26. *Eur J Biochem* 1985; 152(3):721-8.

42. Ifeanyi F, Takemoto L. Specificity of alpha crystallin binding to the lens membrane. *Curr Eye Res* 1990; 9(3):259-65.

43. Bloemendal H, Berbers GA, De Jong WW, Ramaekers FC, Vermorken AJ, Dunia I, et al. Interaction of crystallins with the cytoskeletal-plasma membrane complex of the bovine lens. *Ciba Found Symp* 1984; 106:177-90.

44. Cenedella RJ, Chandrasekher G. High capacity binding of alpha crystallins to various bovine lens membrane preparations. *Curr Eye Res* 1993; 12(11):1025-38.

45. Schey KL, Gutierrez DB, Wang Z, Wei J, Grey AC. Novel fatty acid acylation of lens integral membrane protein aquaporin-0. *Biochemistry* 2010; 49(45):9858-65.

46. Carter JM, Hutcheson AM, Quinlan RA. In vitro studies on the assembly properties of the lens proteins CP49, CP115: coassembly with alpha-crystallin but not with vimentin. *Exp Eye Res* 1995; 60(2):181-92.

47. Quinlan RA, Carter JM, Sandilands A, Prescott AR. The beaded filament of the eye lens: an unexpected key to intermediate filament structure and function. *Trends Cell Biol* 1996; 6(4):123-6.

48. Reddy GB, Das KP, Petrash JM, Surewicz WK. Temperature-dependent chaperone activity and structural properties of human alphaA- and alphaB-crystallins. *J Biol Chem* 2000; 275(7):4565-70.

49. Santhoshkumar P, Udupa P, Murugesan R, Sharma KK. Significance of interactions of low molecular weight crystallin fragments in lens aging and cataract formation. *J Biol Chem* 2008; 283(13):8477-85.

50. Zaslavsky B, Borovskaya AA, Rogozhin SV. Effect of lipid composition on hydrophobic properties of liposomes. *Mol Cell Biochem* 1984; 60(2):131-6.
51. Derham BK, Harding JJ. Alpha-crystallin as a molecular chaperone. *Prog Retin Eye Res* 1999; 18(4):463-509.
52. Aquilina JA, Watt SJ. The N-terminal domain of alphaB-crystallin is protected from proteolysis by bound substrate. *Biochem Biophys Res Commun* 2007; 353(4):1115-20.
53. Hughes JR, Deeley JM, Blanksby SJ, Leisch F, Ellis SR, Truscott RJW, et al. Instability of the cellular lipidome with age. *AGE* (manuscript accepted) 2011.

Figure Legends:

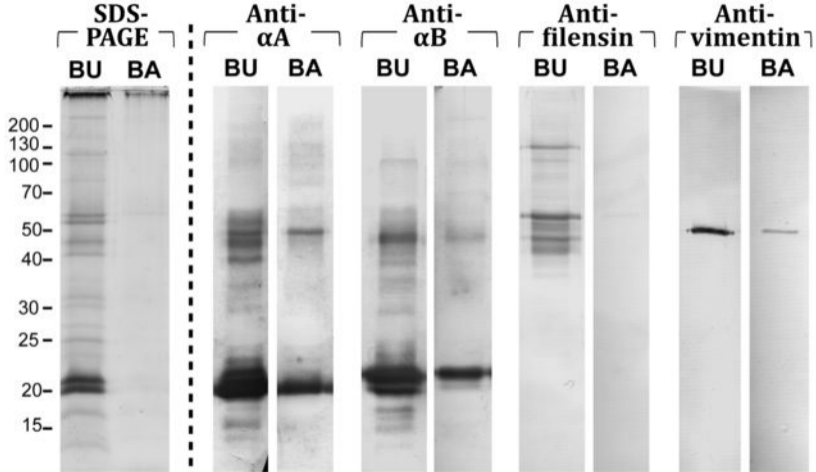
Figure 1: SDS-PAGE and Western immunoblot analysis of bovine lens membranes. The water-insoluble cell membrane pellets from bovine lens homogenates washed with 7 M urea (BU) and with 0.1 M NaOH (BA). Samples were analyzed by SDS-PAGE (100 μ g of membrane per lane) and Western immunoblotting (20 μ g of membrane per lane). Blots were probed using anti- α A-crystallin, anti- α B-crystallin, anti-filensin and anti-vimentin antibodies, as indicated. Molecular weight markers are on the left of the figure.

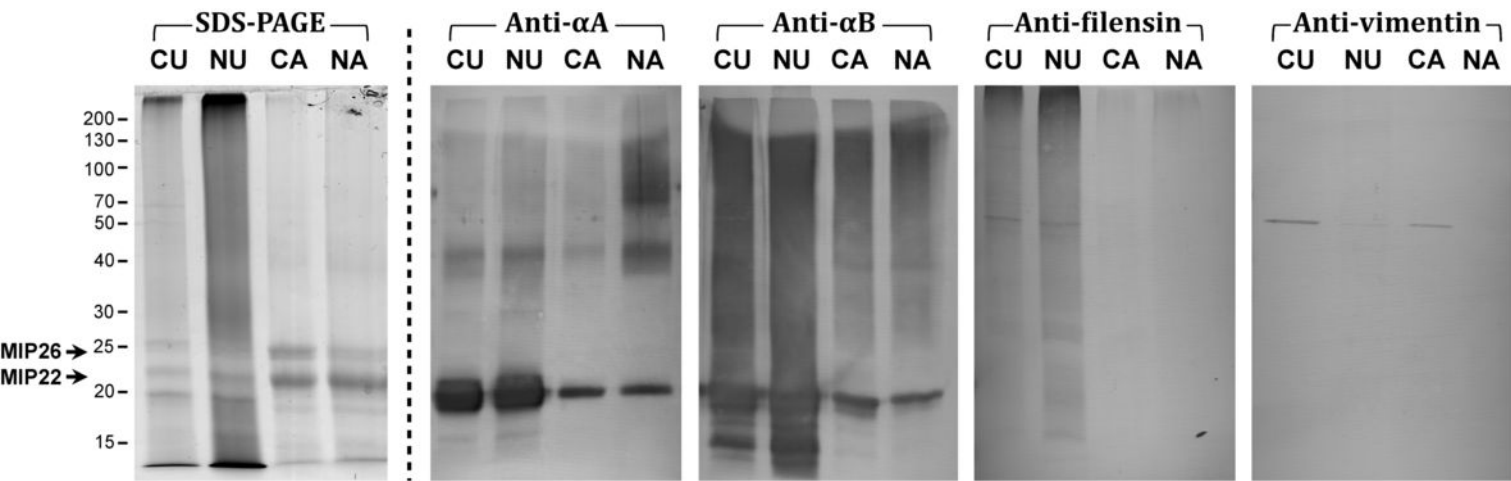
Figure 2: SDS-PAGE and Western immunoblot analysis of human lens membranes. Isolated cortical and nuclear lens membranes were extracted with 7 M urea in Tris buffer (CU – cortex urea; NU – nucleus urea) and with 0.1 M NaOH (CA – cortex alkali; NA – nucleus alkali). Samples were analyzed by SDS-PAGE (100 μ g of membrane per lane) and with Western immunoblotting (20 μ g of membrane per lane). Blots were probed using anti- α A-crystallin, anti- α B-crystallin, anti-filensin and anti-vimentin antibodies, as indicated. Molecular weight markers are on the left of the figure.

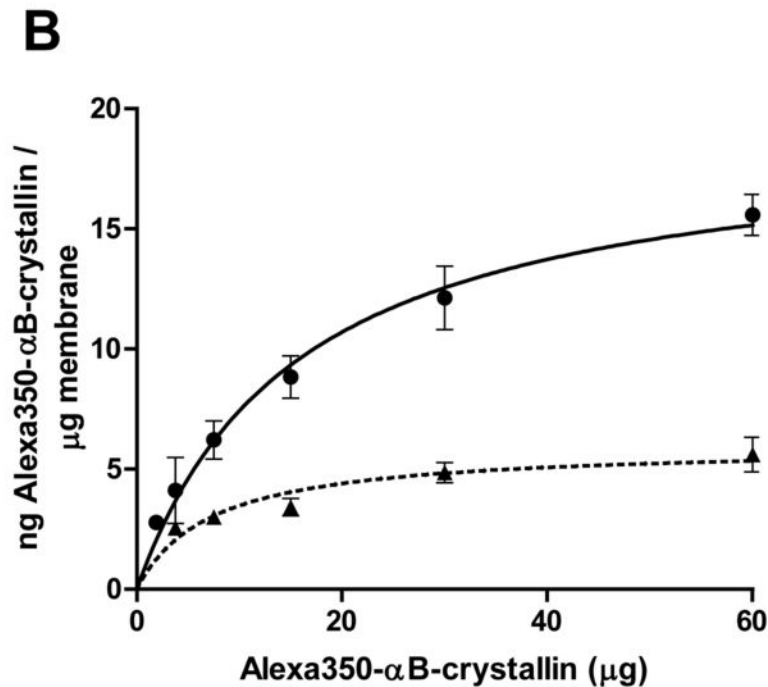
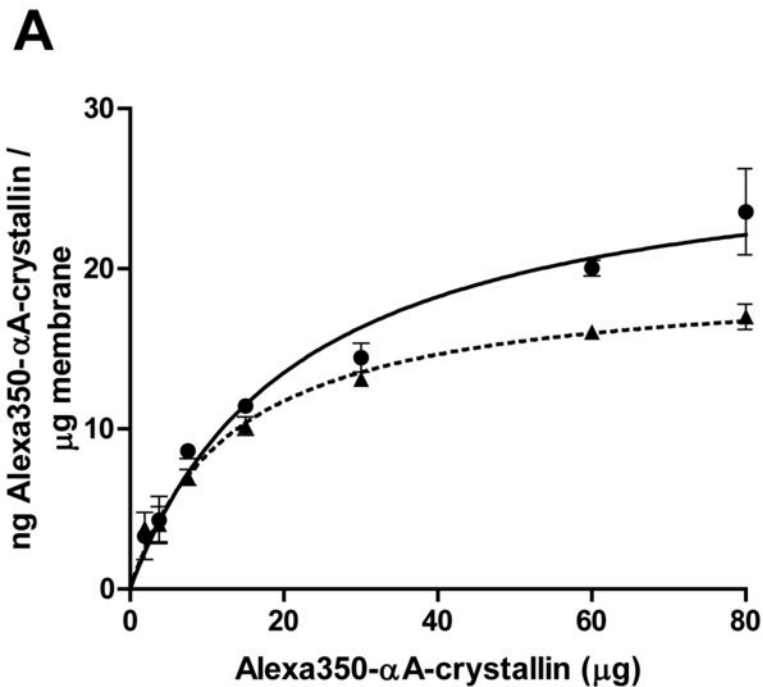
Figure 3: Binding of α -crystallin to bovine lens membrane preparations. Binding curves depicting the amount of bound Alexa350[®]-conjugated α A- (A) and α B-crystallin (B) per μ g of urea-treated (●) or alkali-treated (▲) bovine lens membrane as a function of the free α -crystallin concentration. Bovine lens membranes (200 μ g) were incubated with a mass range of Alexa350[®]-conjugated α A- and α B-crystallins, for 6 h at 37 °C. Results are the mean \pm SEM ($n = 3$).

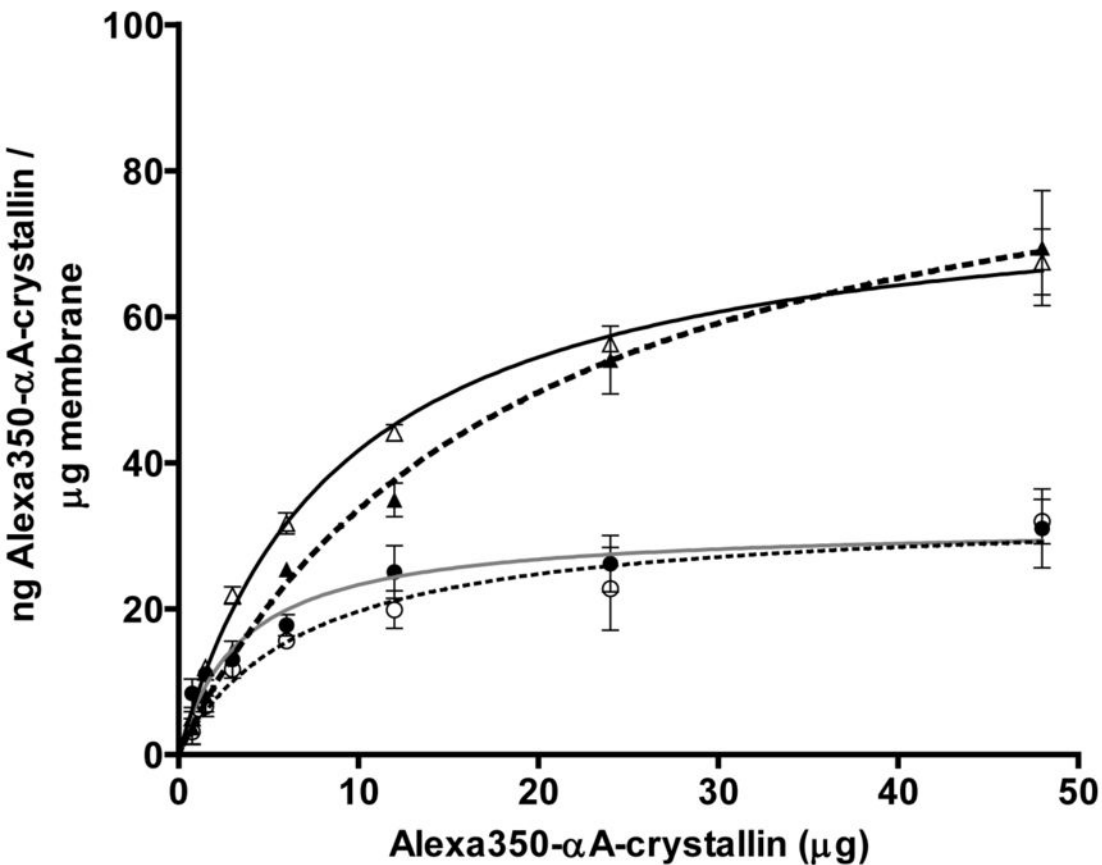
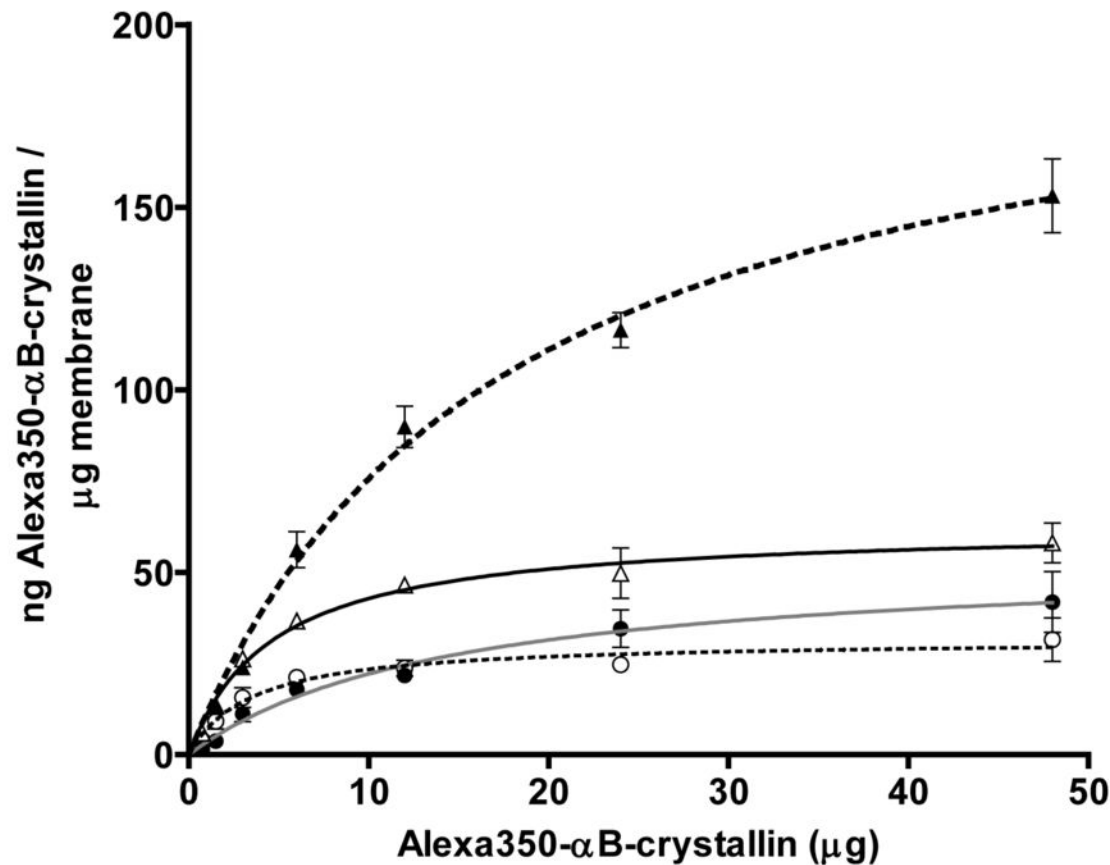
Figure 4: Binding of α -crystallin to human lens membrane preparations. Binding curves depicting the amount of bound Alexa350[®]-conjugated α A- (A) and α B-crystallin (B) per μ g of urea-treated cortical (●) and nuclear (▲) human lens membrane, or alkali-treated cortical (○) and nuclear (Δ) human lens membrane as a function of the free α -crystallin concentration. Human lens membranes (80 μ g) were incubated with a mass range of Alexa350[®]-conjugated α A- and α B-crystallins, for 6 h at 37 °C. Results are the mean \pm SEM ($n = 3$).

Figure 5: Effect of crystallin peptides on the binding of α -crystallin to human lens membranes. Graphs showing the amount (ng) of Alexa350[®]-conjugated α A- (A) or α B-crystallin (B) bound per μ g of human lens membrane in the presence of crystallin peptides. Human lens membranes (80 μ g) were mixed with either 48 μ g of peptide α B₁₋₁₈ (solid bars), 48 μ g of peptide γ S₁₆₇₋₁₇₈ (dotted bars), or with binding buffer only (horizontal line bars), for 30 min at 37 °C. Alexa350[®]-conjugated α A- or α B-crystallin (24 μ g) was then added and the mixtures were incubated for 6 h at 37 °C. Results are the mean \pm SEM ($n = 3$). * $P < 0.05$, ** $P < 0.01$, *** $P < 0.001$ compared with assays performed with binding buffer only (horizontal line bars).







A**B**

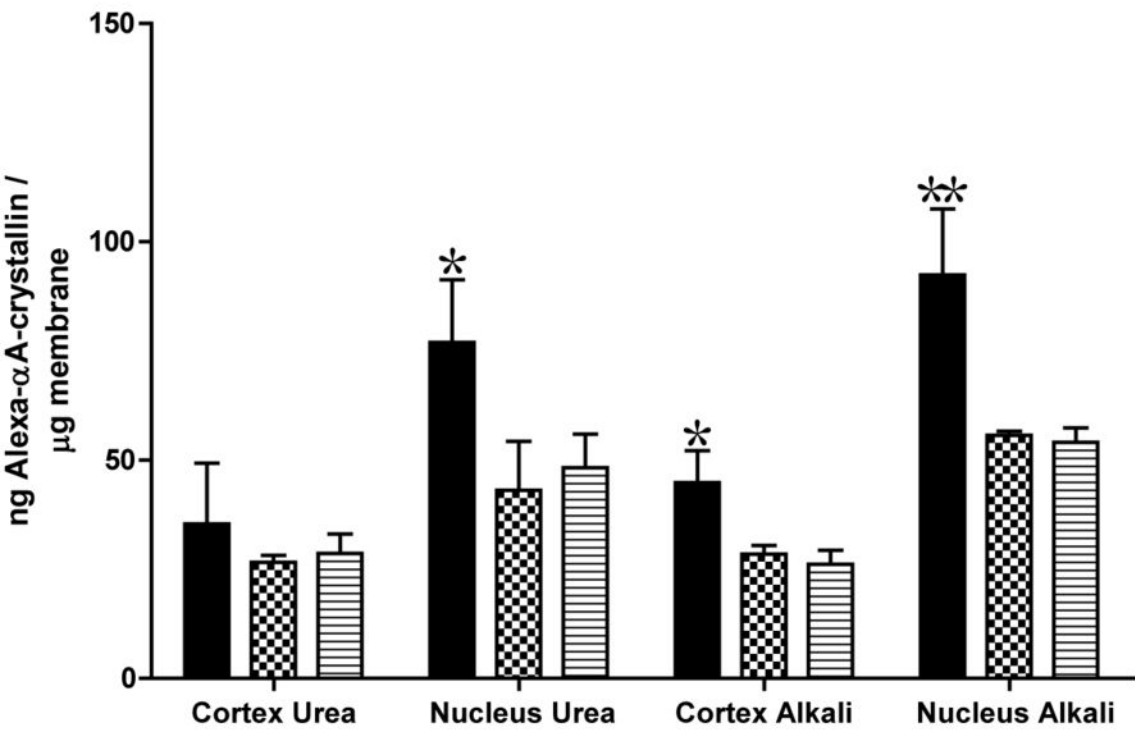
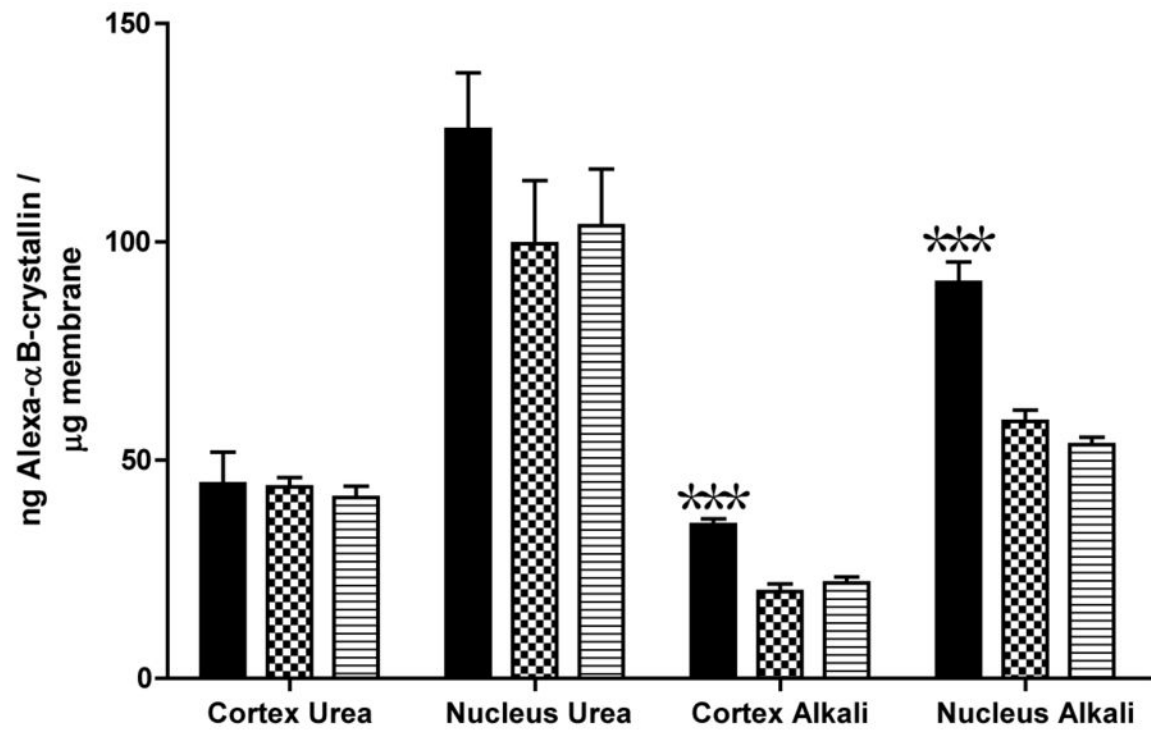
A**B**

Table 1: Binding capacity of bovine and human lens membranes for Alexa350[®]- α -crystallin subunits.

Membrane samples	αA binding capacity (ng/μg membrane)	αB binding capacity (ng/μg membrane)
BU	28.1 \pm 2.4	19.1 \pm 1.1
BA	19.5 \pm 0.8	6.0 \pm 0.6
CU	31.5 \pm 2.0	54.3 \pm 4.2
CA	33.4 \pm 2.8	31.6 \pm 1.8
NU	95.4 \pm 4.2	208.0 \pm 13.1
NA	78.5 \pm 2.0	67.0 \pm 2.4

Abbreviations used: BU – urea-treated bovine membrane; BA – alkali-treated bovine membrane; CU – urea-treated human cortical membrane; CA – alkali-treated human cortical membrane; NU – urea-treated human nuclear membrane; NA – alkali-treated human nuclear membrane.