



UNIVERSITY
OF WOLLONGONG
AUSTRALIA

University of Wollongong
Research Online

Faculty of Creative Arts - Papers (Archive)

Faculty of Law, Humanities and the Arts

2012

"Start of spring: fish swim upstream and break the ice"

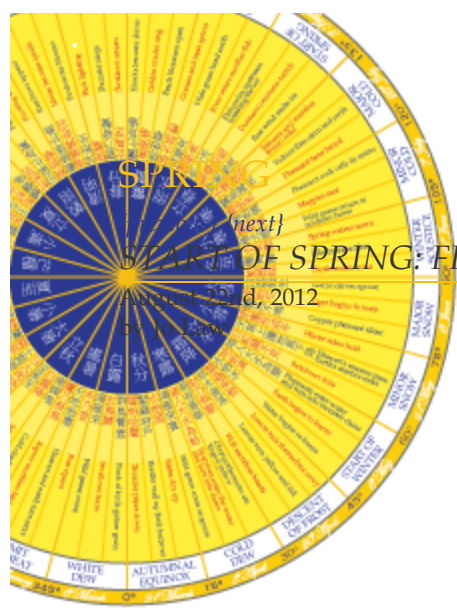
Jo Law

University of Wollongong, jol@uow.edu.au

Publication Details

J. Law "Start of spring: fish swim upstream and break the ice" 2012 Wordpress.org Online Arts Project, 22 August. The Illustrated Almanac of the Illawarra and Beyond.

Research Online is the open access institutional repository for the University of Wollongong. For further information contact the UOW Library:
research-pubs@uow.edu.au



THE ILLAWARRA AND BEYOND

{ABOUT THE PROJECT}

- [about The Illustrated Almanac](#)
- [Reading the Almanac](#)
- [Contributor's User Manual](#)
- [Contact](#)

{OBSERVATIONS}

Autumn
Beyond

- [Austinmer 34°18'S 150°56'E](#)
- [Canberra 35°18'S 149°07'E](#)
- [Coalcliff 34°14'S 150°58'E](#)
- [Coledale 34°17'S 150°57'E](#)
- [Mount Kiera 34°24'S 150°51'E](#)
- [North Wollongong 34°25'S 150°53'E](#)
- [Nowra 34° 53' S 150° 36' E](#)
- [Riversdale 36°01'S 149°12'E](#)
- [Shoalhaven River 34°52'S 150°44'E](#)
- [Taree 31°54'S 152°27'E / 31.9°S](#)
- [Wollongong 34°25'S 150°52'E](#)

Snippets
Spring
Summer
Winter

{CALENDAR}

December 2012

MTWTFSS

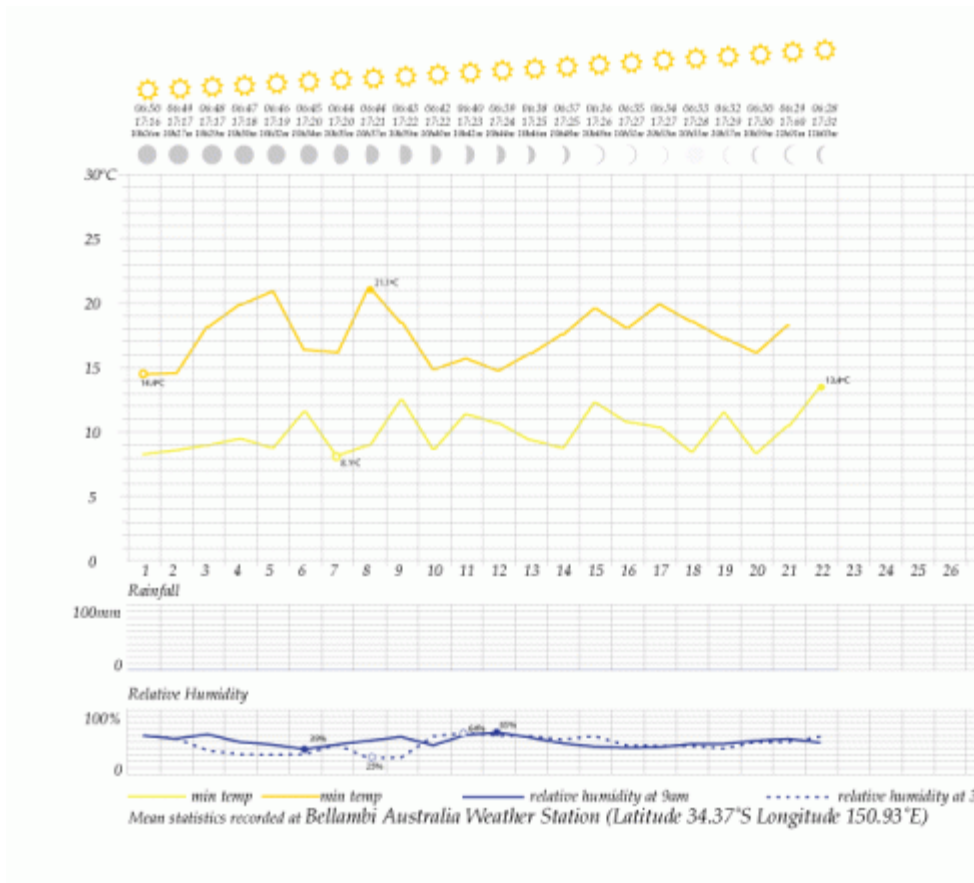
On a cheerfully sunny morning, Hollis and I visited the Botanical Gardens in Wollongong. Upon entry we were greeted by two roosters and a hen, free-ranging on the grass. As Hollis tried to make friends with the birds, I was drawn to inspect the impressive vegetable patch nearby. Bordered by bright marigolds and flanked by colourful rainbow chards and silverbeets, the extensive bed was offering full and round purple and white cabbages; in between fresh pale green broad beans were well on their way to offer up some pods.

In contrast, in our own rather neglected backyard a few lonely garlic shoots fight their way up amongst masses of weeds. The 'autumn' green manure mix in two garden beds appear promising. When the crops reach knee high, they will be cut down and left to rot in a tilled soil to decompose and replenish nutrients lost to past plantings. The recent increase amount of sunlight is enriching the fructose content of the (hitherto inedible) sour oranges. Masses of new flower buds are forming on the lemon tree. The air has been very dry and some plants are showing signs of thirst. Just the other day, an announcement came through the loudspeakers in the supermarket informing shoppers that, in preparation for spring, potting mix has been put on sale. It is time once again to think about our spring and summer crop planting.

Sign
Register
Login
Subscribe
WordPress.org

Subscribe for email updates

Enter your email address:



Delivered by *FeedBurner*

[Subscribe in a reader](#)

[Follow @illusAlmanac](#)

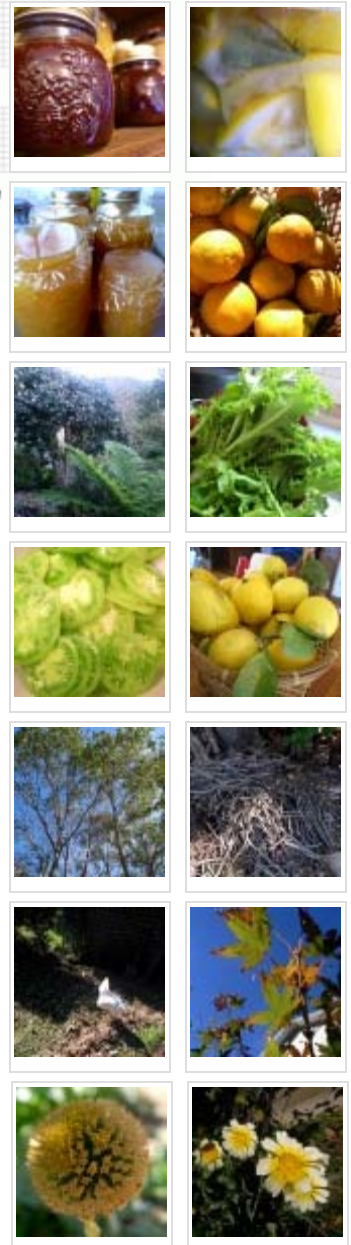
[Tweet](#)

{DOWNLOAD}

[Solar Terms Calendar](#)

[Blank Calendar Wheel](#)

{SNIPPETS}



[No Comments »](#)
[{previous}](#) [{next}](#)

LEAVE A REPLY

Name (required)

E-Mail (required)

Website

{NOTABLE COMMENTARIES}



IllusAlmanac Illustrated Almanac

2:39 PM Jan 12, 2012

@*girlnagun* Meanwhile, fan-mania continues here whether hot or cold/ Faa!! Faa!! chirps the small one.



IllusAlmanac Illustrated Almanac

4:46 PM Dec 20, 2011

@*girlnagun* Yellow-tailed, Red-tailed, may I ask? Just the sulphur-crested vandals here ripping off upripe passionfruits!



IllusAlmanac Illustrated Almanac

1:49 PM Nov 15, 2011

@*girlnagun* A cicada shell on a mulberry leaf: where are the cicadas? Then we heard a song that night <http://t.co/z2WRL0qP>



HollisBridgeman Hollis Bridgeman Law

2:48 PM Nov 13, 2011

@*IllusAlmanac*: more...?

Lzzzzz....d....Zzzzzz...

<http://t.co/UMv7syaG>