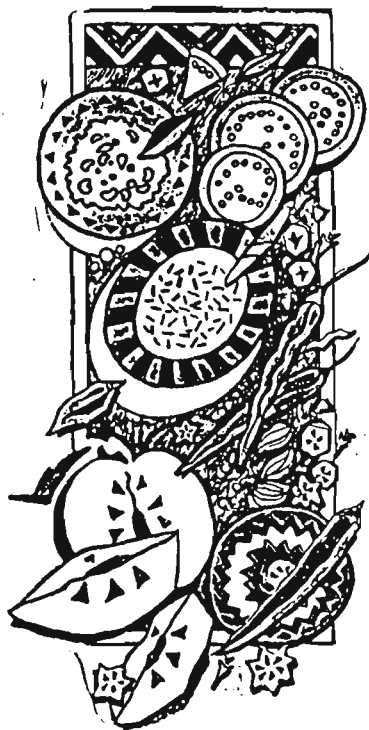


November 13, 1990

Wollongong pioneers new direction in nutrition and dietetics arena



NOT SO many years ago our so-called health system focused almost entirely on the cure of disease. Individuals who fell sick saw their doctor and were given appropriate treatment.

There were of course some preventive measures in place, mainly for infectious diseases.

Children were kept home from school during polio epidemics, and eventually a polio vaccine was developed, so that polio has become essentially a disease of the past.

Nutrition was not a major public health priority, with the exception of a few specific programs such as the school milk program.

We still have a 'sickness care system' which attracts the major part of our health expenditure, and no doubt that will always be the case.

Nevertheless we have realised that in many cases prevention is cheaper than cure, and increasingly we are building public health initiatives to prevent ill-health.

The Department of Public Health and Nutrition at the University of Wollongong has established a new MSc course in Nutrition and Dietetics.

There are several other courses at other universities in Australia, but the course at Wollongong is the first to place a major emphasis on public health nutrition.

The course has been accredited by the Dietitians' Association of Australia as a professional course, so that graduates will be recognised within Australia as dietitians.

Dietitians are health professionals who are competent to advise and counsel individuals on dietary matters, and to provide nutritional treatment for medical and surgical conditions, ranging from nutritional support for someone who has had a serious operation or illness to prescription of a special diet for a child with phenylketonuria, to prevent the onset of mental deficiency which can accompany a faulty diet.

The course at Wollongong has an emphasis on preventing disease, rather than on managing the disease when it occurs (though graduates will be equally competent at both). This redresses an imbalance in other courses.

Head of the Department of Public Health and Nutrition, Professor Dennis Calvert, said: 'The profession of dietitians and nutritionists had to decide if it wanted to take on the larger issues in health or remains a relatively small hospital-based group.'

Innovative ANZAAS conference here

THE AUSTRALIAN and New Zealand Association for the Advancement of Science (ANZAAS) is holding its first joint conference concentrating on the innovative research and development activities of the University of Wollongong and some key local industries within the Illawarra Region.

The conference will be called 'Illawarra Innovations' and will be held at the University on Monday February 11 (for interested members of the public, ANZAAS members and professionals), and on Tuesday February 12 (for Year 12 science students).

The first day of the conference will feature 10 talks by leading Illawarra researchers. The day will commence at 9am and conclude at 5pm.

Talks will include: Innovation - Leading the way to the Third Millennium; Catching the New Technological Bullet; Thermoluminescence - Throwing Light on the Past; Opportunities Beneath our Feet; Preventive Cardiology; High Flying Food Preparation, Utilising Robotics; Health Implications of the Greenhouse Effect; Utilising Geology to Monitor Coastal Pollution; Important Trends in Telecommunications; From Thick Steels to Thinking Plastics

The second day of the conference has been set aside specifically for Year 12 students

Continued page four

Continued page four

STEPAN takes initiative in upgrading China's scientific and technological capabilities

THE UNIVERSITY of Wollongong is involved in a major initiative to upgrade China's scientific and technological policy capabilities.

China has requested Wollongong's Regional Centre for Science and Technology Policy Asian Network (STEPAN) to assist in training that country's key science and technology policy personnel in developing a nationwide management information system for science and technology policy.

Wollongong University provides the Regional Centre for the network under the Chairmanship of Professor Stephen Hill and the Program Manager, Dr Shantha Liyanage.

From all the world, China chose only the National Science Foundation of the United States and Wollongong's STEPAN personnel to help them.

Dr Liyanage, Program Manager for STEPAN and newly-appointed Research Fellow of the National Centre for Research Policy at the University of Wollongong, will be visiting China in early November to run the training program.

Wollongong has also been instrumental in arranging Australia's scientific relations with Indonesia.

Dr Liyanage spent November last year in Indonesia assisting the government to develop an aid proposal for United Nations funding of their science and technology policy development and a grant for approximately \$750,000 was awarded a few weeks ago as a result.

This project comes in the midst of a major

STEPAN a major force in Asian region

A MAJOR initiative associated with STEPAN's team is the keynote speech on behalf of Australia by Professor Stephen Hill to the Pacific Economic Cooperation Conference in Korea in early November.

Professor Hill said STEPAN is a major force in the science and technology policy interests of the whole Asian region.

'Wollongong's team is at the core of everything that is happening,' Professor Hill said.

'STEPAN has provided this University with a major opportunity to attain international visibility and credibility in Asia.

'Mention science and technology development and policy anywhere in Asia now and people will associate it with Wollongong.

'Not only this, it has become increasingly clear that Australia's general development can no longer be separated from Asia. At the core of our future economic viability stand our abilities in scientific research, and at the core of our problems stand our inabilities to capitalise on these capabilities internationally.

'Understanding how to best capitalise on Australia's research expertise within the international domain is a basic issue that Wollongong's new National Centre for Research Policy will be concentrating on.

'STEPAN provides the means by which the centre is able to be centrally located in what is actually happening in all other countries of this region.'

new Indonesian development program to upgrade its whole science and technology infrastructure.

Based on Dr Liyanage's initiative and subsequent STEPAN programs, Indonesia then opened the door to Australia to become involved.

Professor Hill accompanied Australian government officials to arrange Australian-Indonesian scientific collaboration during September. The contract between Indonesia and Australia is being finalised.

During August, Wollongong's STEPAN team organised a highly successful high-profile conference in Thailand that focussed on the role of science and technology in the region's future.

Titled 'Keys to Asian Renaissance of the 1990s — Science and Technology for Development', the conference attracted some of the key people who had contributed to the science-led development of Asia over the last two decades.

For example, Dr Hyung-Sup Choi, mastermind of Korea's development, presented one of the keynote papers.

Key people from the conference, including Professor Hill, then presented a public lecture series on Thai national radio, inaugurating the Thailand Science Week International Public Lecture Program (conceived and organised by Wollongong's STEPAN team).

Many other things are happening in Thailand for the Wollongong team. One

project is a joint Thai-Australia Business Council research venture on telecommunications that Wollongong is directing.

Another is a request from Chulalongkorn University in Bangkok to establish joint science and technology studies postgraduate courses and degrees.

However the main initiatives emanating from Wollongong are to establish a Regional Centre for STEPAN in Bangkok (already well down the track, with United Nations Development Program funding potentially available); and to contribute to Thailand's development of endogenous technology capabilities.

The Thai Government insisted to the United Nations that only the Wollongong STEPAN team could direct their program for developing Thailand's endogenous technology capabilities.

Dr Liyanage has been invited to consult with the Philippines government on their S&T policy program this month and he will also visit the Asian Development Bank in Manila about future funding of STEPAN.

Professor Hill has been requested by Canada's International Development Research Centre (IDRC) to visit Singapore in November to meet with the centre's Vice-President of Programs about joint STEPAN/IDRC programs on S&T policy development through the region.

Many more STEPAN initiatives are already planned and funded for 1991 — some in Australia and others throughout Asia.

Campus News is published weekly on Tuesday during the academic year — with breaks at Easter and Queen's Birthday 'long weekends'
Editor and Media Contact: Gillian Curtis
Telephone (042) 27 0110

Editorial Production: Kevin McDonald
Deadline for copy is noon on Monday of the week before that of publication

Material for *Campus New* can now be sent by Microsoft Mail to Editor Gillian Curtis. The new service is not available to all staff members as yet.

Those who have the facility are urged to use it. Those who haven't been connected, material for publication can be left, preferably, on a Macintosh-formatted floppy disk, or on hard copy in the *Campus News* tray in Planning and Marketing Branch, Administration Building.
All material may be reproduced without permission.

Sculpture set to soar under lights

A SPECIAL dedication service will be held at the University of Wollongong on November 26 for what is already being hailed as Australia's most outstanding outdoor sculpture.

The piece-of-art in question is the *Lawrence Hargrave Sculpture*, a work by acclaimed sculpture Bert Flugelman and dedicated to the pioneer of flight, Lawrence Hargrave, who was born and worked in the Illawarra region.

From the outset Bert said his work was designed to be best viewed at night, under floodlights.

On November 26, for the first time, the sculpture will be floodlit giving the illusion of the sculpture, a dedication to flight, hanging, suspended, from the Wollongong escarpment.

The 'turning on of the lights' at the sculpture site will climax 24 hours of celebration in Wollongong.

Already scheduled are a laser display, hang-gliding and special presentations by students from the School of Creative Arts.

The public will be invited to come to the campus on the night.

Wollongong City Council Aldermen will hold their scheduled meeting on the night from the University Council room.

Commercial radio stations (2WL and 2-Double-0) have also been invited to broadcast from Campus.

Sunset will be around 7.46pm on November 26.

Total Quality Management course to lift Australia's world profile

TOTAL Quality Management is not just a concept or the present flavour of the month.

It is the style of management that transformed the post-World War II Japan from utter devastation to world leadership in manufacturing of electronic equipment, cameras, watches, motor bikes, motor cars etc.

This could not have happened without the active support of the high level Japanese managers.

They did not just ensure that the consumer received products that were almost free from defects.

They tenaciously sought out reasons why items were defective and then worked on ways of improving the process to avoid the recurrence of such errors.

The direct involvement of top management meant the decision makers were aware of the defects and acted upon the causes immediately when they were found.

The Japanese then expanded the ideas of quality improvement to sales, administration, design, research, development and even management! Total approach to quality is needed in Australia.

Australian industry is recognising the need for involving people in Total Quality Management principles.

For this reason the University of Wollongong is providing a Post-graduate Diploma and an Honours Master course in Total Quality Management, the only courses of this kind at present offered in NSW.

This is a co-operative initiative by the Faculties of Engineering, Informatics and Commerce involving the Departments of Mechanical Engineering, Mathematics and Management.

The courses are offered for the first time in 1991 and can be taken on a part-time or full-time basis.

A brochure giving details on the course

structures and subject outlines is available from Dr Ross Sparks, Department of Mathematics. Research activity in the area of industrial quality principles is increasing at the University of Wollongong.

Two fairly new appointments to the University staff, Professor Günter Arndt and Dr Peter Gibson, are active researchers in the area of industrial engineering.

They have presented approximately 35 in-house courses at universities for approximately 20 companies with a total enrolment of 2000 people. The demand for these workshops is increasing.

Professor Arndt is also director of the Centre for Advanced Manufacturing and Industrial Automation (CAMIA), which has been introduced within the Department of Mechanical Engineering.

This centre is investigating industrial needs in terms of training requirements within the bounds of industrial engineering and TQM principles.

This will ensure that in future the University of Wollongong will be continually in touch with industries' needs.

The aim of CAMIA is to upgrade the existing training programs to suit those needs.

The statisticians at the University of Wollongong have initiated research programs in the area of statistical process control. They received an Australian Research Council Grant in 1989 that funded collaborative research in this area with CSIRO (Sydney).

From next year, a co-operative seminar lecture system of statistical quality control will be organised with the University of Waikato in co-operation with Professor Nye John, Professor of Statistics and Quality Improvement, Waikato.

The statisticians of the University of Wollongong (sometimes jointly with CSIRO-DMS unit) have presented workshops on statistical techniques to industry.

Professor David Griffiths is exploring the possibilities of links and student exchange programs with overseas universities.

The Management Department (Faculty of Commerce) has more than 250 post-graduate coursework and research students with 20 members of staff.

The Department covers the areas of Organisation Behaviour, Marketing, Finance, production and operation management, strategy. Dr Sim and Julian Lowe, David Patterson and Phil Dawes, M. Zanko, Dr Jabri and Professor Michael Hough are involved in extensive research.

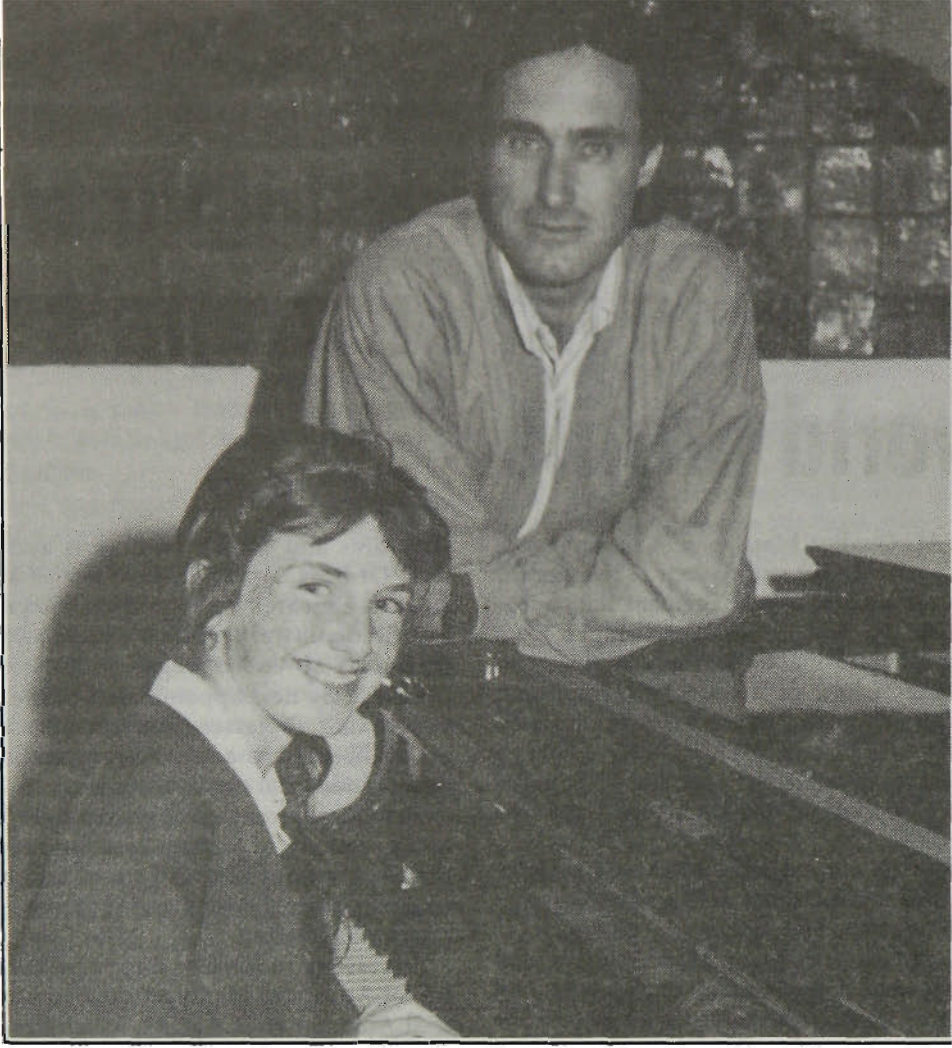
Statistical Consulting a help to any research project

AS THE teaching year draws to an end, many academics will be planning research which involves collecting and analysing quantitative data.

It seems an opportune time to remind you that a Statistical Consulting Service is available on campus, and that its services are currently provided at no cost to staff and postgraduate students without any external funding.

People with external funding must meet the cost of the services they use.

The Consulting Service will provide advice on the planning of experiments, the way in which the data should be entered to the computer, and the analysis of complicated experiments. It will not carry out data entry or simple analyses, nor will it answer questions about obscure statistical software. For further information, or to make an appointment, please contact Ken Russell on extension 3815.



Scholarship winner Bethany Cook with her father Professor Chris Cook, of Electrical Engineering.

Conservatorium announces scholarships

THE UNIVERSITY of Wollongong Conservatorium of Music announced its scholarships for 1990 at the Scholarship Finalists Concert at Gleniffer Brae recently.

The winners are: **University General Scholarship:** Tanya Slattery (flute); **Bessie Foskett Memorial Scholarship:** Matthew Watson (violin) and Carolyn Watson (violin); **Noel Lamerton Memorial Scholarship:** Vanessa Toh (piano); **Dr Harry Maldon Memorial Scholarship:** Dong-in Shin (piano) and Stephanie Giesajtis (piano); **Frank Hutchens Memorial Scholarship:** Bethany Cook (piano).

BHP Developmental Scholarships for one year of tuition were also announced recently.

After auditions on October 24, the following received scholarships: Jocette Coote (oboe), Kate Stephenson (oboe), Tony Grimm (bassoon), Danielle Coote (clarinet), Michael Stephenson (French horn), Nicholas Trpezanowski (trombone), Tom Williams (trombone), Imogen Reeves (cello), Emma Donald (viola) and Peter Crocco (viola).

Innovative ANZAAS conference here

From page one

with a special interest in science.

More than 100 schools have been invited to attend, with the aim being to encourage students to consider a career as one of the next generation of scientists.

There will be eight talks on the second day, (from 9am to 4pm), which will include: Health Implications of the Greenhouse Effect; Putting Waste to Work; Material Advances in the Illawarra; People, Plants and Pathogens; Innovations in Telecommunications; Sensationalism in Science

Dr Terry Burke, Assistant Director General of Schools — South Coast Region, said that he appreciated the efforts of the University in encouraging students to explore the many different and exciting fields of science which are available.

'Thank you for assisting the Department to broaden the horizons of its students in this way,' he said.

Prior registration is recommended and an information package will be forwarded upon receipt of completed registration forms.

Registration Fees will be:

Group 1: ANZAAS Members (\$75), Non-members (\$85), University Academic Staff (\$75), Companies (\$400 for 5).

Group 2: Undergraduate Uni Students (\$25), High School Students (\$5), Teachers accompanying students (\$5).

A smorgasbord lunch will be provided for Group 1 participants on the first day, while facilities will be available for those in Group 2 to purchase their own lunch from the University Union.

The Illawarra Innovations Conference is the first of what will be several joint conferences which ANZAAS will be assisting to organise in the coming year. ANZAAS is particularly keen to organise conferences for their own regions.

For further information and registration forms contact Brenda Weeks, University of Wollongong, tel. (042) 270 945, or ANZAAS, University of Sydney, tel. (02) 552 1693.

From page one

'The profession has made up its mind that it supports the initiatives at Wollongong, and this marks its commitment to a wider role in society.'

Applications for the course are coming not only from the University's own graduates (mostly from the BSc major in nutrition) but also from graduates with a BSc or equivalent elsewhere in Australia and overseas.

Nutrition is a primary focus for health promotion. Poor nutrition for instance has been estimated to cost Australia \$6 billion per year (Better Health Commission 1986) which compares with the bill for motor

Nutrition course leads the way

vehicle injury at \$3.5 billion per year and alcohol abuse at \$1.5 billion per year.

In 1988 the Australian Health Ministers adopted the report of the Health for All Committee which identified nutrition as one of the five priority areas requiring national action for better health.

The Health for All Committee said that if people had a healthier diet, major contributions could be made to the reduction of heart disease, some cancers, stroke and other less prevalent diseases.

The greatest impact on health would be

among Aborigines and those in lower socio-economic groups.

Changes in primary production, food processing, labelling, advertising and marketing can all assist in improving the Australian diet and can be as important as greater awareness in changing dietary patterns. The aim of the Department of Public Health and Nutrition is to strengthen multidisciplinary health promotion and disease prevention and to research and mount new initiatives in NSW and Australia.

Initiatives will improve campus access

THE COUNCIL of the University recently noted a range of initiatives now being undertaken to improve access to the campus generally.

These include:

- improvements in the city-to-University bus timetable;
- the purchase of a shuttle bus to operate from Campus East;
- government funding for construction of a pedestrian-cycleway, including a bridge across the Freeway;
- more uniform timetabling of classes throughout the week.

Council resolved that there should be tighter enforcement of the University's parking rules - a matter raised by many present at the recent Forum on Parking.

The Parking Policy Committee has recommended the purchase of wheel clamps to be attached to vehicles driven by persistent offenders.

Council also considered the proposed parking arrangements for 1991 and approved them in principle.

Despite continuing efforts to improve public transport and non-vehicular access to the campus, a rise in parking fees is unavoidable.

Fees for red and blue permits for 1991 are still to be recommended by the Parking Policy Committee, which will consider the details of these arrangements once the demand for reserved places has been ascertained.

At this stage only details relating to reserved places are discussed with the details for red and blue permit areas still to be considered.

From 1991 all reserved places will be charged for. The fee for 1991 has been set at \$620.

These places include those for Faculties, Departments and administrative units.

Council recognised that one of the main causes of frustration among car users is the time lost in searching for a parking place at peak periods, particularly when returning to the campus from business elsewhere.

It therefore agreed to the introduction of personally reserved spaces, to be paid for by the users, and located in the new multi-storey car park.

All members of the University community are eligible to apply for a reserved space and applications will be dealt with strictly in order of receipt.

In addition, a Group Purchase Scheme will be introduced, with a new style of transferable permit, valid for a reserved space in the multi-storey car park only.

This will be valid for any one of up to five

vehicles, with the costs shared among the users.

Construction of the new car park is on a fixed-price contract, but while the builder is making every effort to catch up, it may not be ready for use until April.

Should that be so, purchasers of personally-reserved spaces will be given preferential use of a centrally located red area, from the commencement of Autumn Session.

In order to assist with the cash flow necessary to recover the costs of managing parking, access, and traffic flow within the University, a discount will be offered for those who pay in full, in advance, for a personally-reserved space.

For payment in cash or by personal cheque

before November 30, the fee will be \$550. For full payment before January 31, the fee will be \$600.

For those who pay by fortnightly salary deduction, the rate will be \$24 per fortnight, commencing with the expiry of all current permits on February 25 1991.

A "box plan" of the multi-storey car park is available for inspection at Office Services on the Ground Floor of the Administration Building, and will shortly be displayed in the Library.

Staff responsible for the management of departmental and other reserved spaces should advise Mr Tony Clapham, Office Services, as soon as possible whether they will be requiring them from 1991, noting they are subject to the \$620 fee.

Agricultural economist lecturing here

ASSISTANT Professor Dr Christian Nöll from the University of Kiel, Germany, is visiting the University as a guest lecturer at the Department of Business Systems.

Dr Nöll will be at the University until December 14. He will then visit the USA where he will work at the University of Purdue in Indiana for a year.

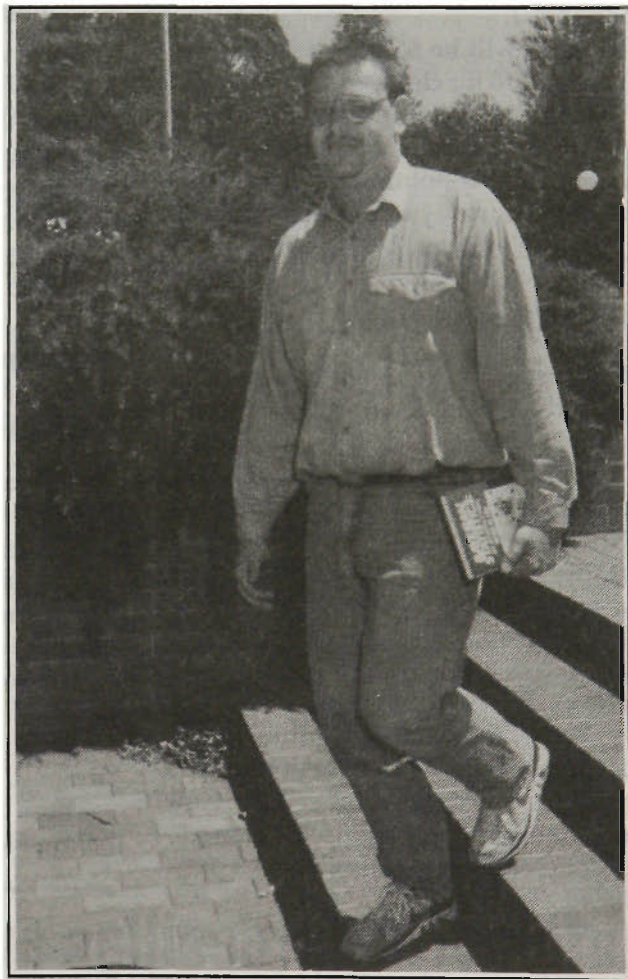
During the next few weeks Dr Nöll will conduct several seminars and lectures covering the following topics: Stochastic Models of Learning, Business Productivity Tools and Expert Systems.

As an agricultural economist Dr Nöll said his main academic interests were the theoretical problems associated with agricultural management, and information systems used in relation to agricultural economics.

'I found agriculture interesting because there was a lot of scope to apply theories of natural science and economics to practical things,' Dr Nöll said.

Dr Nöll is looking forward to a two-week country study trip where he plans to visit a rice mill at Deniliquin and the Bega Co-operative.

In the past year the University of Kiel and the Department of Business Systems at the University have been establishing strong departmental ties and have arranged further staff exchange programs.



Assistant Professor Dr Christian Nöll

News in brief

Japanese-aboriginal theme in art exhibition

A LINK between aboriginal art and Japanese ainu art is the theme behind Norio Takamiya's current exhibition in the Technology Centre.

The exhibition of paintings and collages is Takamiya's Master of Creative Arts submission.

He uses paint in the conventional way, but adds layers including cardboard, string and other materials to create bold designs.

The exhibition runs Monday to Friday 9am to 5pm until November 28.

ICOS trip to Wonderland

THE ILLAWARRA Committee for Overseas students has organised a coach trip to Australia's Wonderland on Saturday December 1.

The cost will be \$15 for overseas students and \$10 for children 4-10 years old.

Tickets and details are available from ICOS office in the Union Building, next to Careers and Appointments Service, on Tuesday, Thursday and Friday from 9am to 2pm. Telephone 270158 or ext. 3158.

Creative Arts Diary

November 15: Preview, Art Arena Gallery, Judy Weeks, Paintings and Prints (until Nov 25).

November 16: Preview, Long Gallery, BCA Graduating Exhibition, 7pm.

November 24: 1990 subscription concert City of Wollong Symphony Orchestra, with Roland Chadwick piano and Wayne Dixon, conductor. IMB Theatre, 8pm.

November 29: Preview, Art Arena Gallery. Peter Day, paintings, (until Dec 9).

December 4: The University Singers, Christmas concert. **December 7:** Preview, Long Gallery, Paul Counsel, DCA submissions, ceramics, 7pm.

Graduating Creative Arts students set sail for their future careers

GRADUATING Creative Arts students are holding *1990 Classic Sellout*, an ironic exhibition of their works.

The students have associated their final year works with retailers' clearance sales.

Sue Rowley, from the School of Creative Arts, said retail sales marked a sell-off of current stock to make way for the new stock coming in.

'The present is already seen as pertaining to the past,' she said.

'The graduating students are preparing to move on. An important stage in their formation as artists is nearing completion.

'These works bear witness to their labour and achievements over their undergraduate years.

'Viewing this exhibition, we are invited to gamble on these students' futures.

'Their work might appreciate in value, just as their training represents an investment in their futures.

'The sale anticipates their entrance into an art world increasingly structured by market forces.

'The exhibition is a satiric comment on a society that wants art on the cheap.

'The price tag on their work, now and in future, will rarely reflect its real value.'

She said the students can play with the idea of art-as-commodity.

'Their commitment to their work comes not from its monetary value,' she said.

'Rather they express a conviction that art engages with the social world in a way that challenges and empowers us to reshape our world so that institutions such as the marketplace lose their pervasive power over our lives.'

The exhibition will be held in the Long Gallery from November 18 to December 2, Mondays to Fridays 9.30am-12.30pm and 1.30-4pm and Sundays 1.30-4pm.

Professor Barry Conyngham will open *1990 Classic Sellout* on Friday from 7pm.

Study leave deadlines

STUDY leave applications for Spring Session (Session II) 1991 close on January 11, 1991.

Applications can be obtained from Sue Smithers, Personnel Services Branch (Ext. 3117) or through the Administration File Server.

OECD education expert on campus for lecture

HEAD of the OECD Project on International Education Indicators, Mr Norberto Bottani, will visit the University of Wollongong this month to talk with researchers of the Education Policy Program.

Mr Bottani will also visit the Aboriginal Education Unit and give a public seminar on international education indicators. The lecture will be held on November 21 at 4.30pm in Building 38 Room G01.

In 1976, Mr Bottani joined the OECD as a Principal Administrator, to head international projects on Social Policies for Children (1976-81), Education, Cultural and Linguistic Pluralism (1982-87) and International Educational Indicators (1988 to present).

Those interested in attending Mr Bottani's seminar please contact Ms Jane Cook before November 15, tel. (042) 270 950.

Antoinette Tordesillas awarded scholarship to Nottingham

ANTOINETTE Tordesillas, a Ph.D student in the Department of Mathematics, has recently been awarded a three-month British Council Award to undertake part of her PhD work in the Department of Theoretical Mechanics at the University of Nottingham.

Antoinette, who is also the holder of a BHP PhD Stipend, is working on coating problems arising from the Coated Products Division at Port Kembla.

These problems hinge on an understanding of Contact Mechan-

ics and her supervisor at the University of Nottingham is a world expert in this area.

Dr Arthur England is a leading authority on the mathematical techniques underlying contact problems.

The Department of Theoretical Mechanics at Nottingham is reknown for its contributions to continuum mechanics, especially in the areas of finite elasticity, granular materials and fibre-reinforced materials.

Research Funds

Innovative Rural Education and Training Program

DEET is seeking applications to develop and implement innovative projects relevant to the training and educational needs of rural people.

The University closing date is December 14.

National AIDS Council

Multi-Centre Program Grants

These grants are for three years funding of two-three separate approved research institutions in collaboration under the responsibility of one Chief Scientist. The University closing date for Expression of Interest is February 1, 1991.

Australian Meat and Livestock R and D Corporation

Core Project Funding

AMLRDC has allocated money towards a number of special grants in core areas for Universities to encourage postgraduate and post-doctoral training and research. The core areas are as follows; Restructure

The sources of research funds given below are available to members of academic staff. Further information, including application forms, may be obtained from Lyndal Manton (ext. 3201). Intending applicants are reminded that all research applications must be forwarded through the Office of Postgraduate Studies.

meat products; Food safety in the meat industry; Robotics and artificial intelligence in meat processing; Behavioural aspects underlying consumers' food preferences; Genetic engineering of pasture and fodder species of importance to the Aust. livestock industries. The University closing date is December 14.

Australian Federation of University Women — Victoria

Amy Hughes Scholarship and Beatrice Finger Scholarship

These scholarships are available to all members of the AFUW for study in any area and in any country. They are valued at \$5000 each. The University closing date is February 1, 1991.

Previously Advertised Closing Date
The British Council

Travel Grants	Any Time
Australian Arts Council	Any Time
CSIRO Horticulture P/Grad Scholarship	November 16
Japan Foundation Grants Program	November 16
Dairy R & D Project Grants	November 16
Jon Royce Memorial Trust PR Scholarship	November 16
ATERB Research Grants	November 16
Meat & Livestock R&D	November 16
Symons Fellowship	November 16
Lady Davis Fellowships	November 16
ATERB Grants	November 19
Netherlands Government Scholarships	November 23
Natural Sciences & Engineering Fellowships	November 30
National Academy of Education	December 7
NHMRC Burnet Fellowship and Eccles Awards	December 14
CSIRO P/Grad Project Awards	December 14
Australian Federation of University Women	January 18
Australian-Greek Travel Awards	February 1
AFUW SA Inc Bursary	February 15
Illinois State University	March 1

Timetable for payroll production during December

DUE TO the limited time available for salary production over the Christmas period the following timetable of Pay Office requirements has been prepared for the pay periods December 20 and January 3.

Would you please ensure that any casual or part-time teaching authorities which require processing are forwarded to the Salaries Office as early as possible and definitely before the stated deadlines.

Pay period ended December 20: All salary variations and overtime sheets to reach Personnel Services not later than 4 pm on December 7.

Timesheets for casual staff and part-time teaching returns to reach Personnel Services not later than 4 pm on December 12.

Pay period ended January 3: All salary variations and overtime sheets to reach Personnel Services not later than 4 pm on December 14.

Timesheets for casual staff and part-time teaching returns to reach

Personnel Services not later than 4 pm on December 20.

Any payroll documentation received after the respective deadlines will not be processed until the next available pay.

Because of the restricted timeframe it is possible that new deduction authorities and changes to banking details may not be processed until the pay period ended January 17.

In this regard please do not close accounts until you are satisfied that your salary is being deposited into the correct account.

Staff proceeding on leave and requiring payment in advance, in accordance with the Universities leave provisions, are reminded that applications, with supporting documentation where necessary, should reach Personnel Services as early as possible but not later than three weeks before commencing leave.

If there are any problems with these arrangements contact the Salaries Office, exts. 3914 or 3930.

Enterprising effort by Department of Management

THE DEPARTMENT of Management has provided the leadership for the successful NSW prize-winning team in the Enterprise Workshop project, for the second time in four years.

Professor Michael Hough of the Department was the Chairman of the 1990 Illawarra Committee which promoted interest in the region to attract participants, raised local community funding to assist with selected expenses of participants, and provided advice from the community for the quality and presentation standards of the project.

Mr Les Kirschmayer, a part-time staff member of the Department and a member of the previous state winning team, provided constant support, advice and encouragement to the team as it developed its business plan.

Professor Julian Lowe was the Enterprise Workshop co-ordinator before 1990.

The basic purpose of the Enterprise Workshop scheme is to provide advice, training and encouragement for teams to learn the techniques of business planning, select an appropriate project and develop a business plan which is then presented to a state panel.

In 1990, the successful NSW team was led from the Illawarra by Ms Acuzeno Cabello, a project metallurgist at the BHP.

The team was Ms Cabello, Mr Stuart Ellis and Mr Alan Chapman and the project was called 'Superspan'.

The state presentations were recently completed, and the 'Superspan' team was selected as the NSW winner and will represent at the Australian finals this month.

Seminars

Centre for Advanced Manufacturing and Industrial Automation

November 15: Dr Y Yao, Lecturer in Manufacturing Engineering at Wollongong University, *Applied time series analysis for manufacturing*, Wollongong Surf Leisure Resort, Fairy Meadow.

December 4: Professor Günter Arndt, *An introduction to total productive maintenance — putting quality into maintenance*, Wollongong Surf Leisure Resort, Fairy Meadow.

December 6: Dr Y Yao, Lecturer in Manufacturing Engineering at Wollongong University, *Condition monitoring and diagnostics of machines and processes*, Wollongong Surf Leisure Resort, Fairy Meadow.

December 10: Dr D P Saini, of the Department of Mechanical Engineering at Wollongong University, *Strategic Maintenance for optimisation of equipment availability*, Wollongong Surf Leisure Resort, Fairy Meadow.

Booking and enquiries to: tel. (042) 270354 or fax (042) 270101.

Department of English

New Literatures Research Centre

Seminar Series

November 23: Graham Tucker, *Mermaid Singing, the genesis of the Charmain Clift persona*.

All seminars are held in room 19.1083 from 2.30pm

Faculty of Education

School of Learning Studies

Seminars are held on Wednesdays at 12.30 pm in Building 21.104

November (date to be advised): Professor Michael Apple, University of Wisconsin, Madison, *The Gendering of Teaching*.

Enquiries to Bill Winser, Co-ordinator, School of Learning Studies, ext. 3963

Department of Management

Friday November 16 at 12.30pm: Yunis Ali, *The International Joint Ventures in Third World Countries*.

All seminars are held in Room 19-1003. Enquiries, Paul Patterson, research program co-ordinator, tel. (042) 27 0687 or ext. 3687.

Department of Mechanical Engineering

November 13: Richard Dwight, APRA scholar Department of Mechanical Engineering, University of Wollongong, Clairvoyant design engineering to ensure health and safety. 1.30pm Building eight, Seminar Room.

Department of Physics

Colloquia, to be held in Physics Lecture Theatre, 18.118 at 12.30pm.

November 15: Professor Bob Clark (UNSW), *Experimental detection of the electron solid in GaAs*.

November 22: Dr Peter Metcalfe (TWH), *"The New Medical Linear Accelerator at the Illawarra Cancer Care Centre."*

Further information contact Dr RA Lewis, ext. 3518.

School of Human Movement Science

November 16: Mark Anshel, *Possible underlying causes of warm-up decrement in sport* 12.30pm

November 23: Tom Penrose, *Some functional aspects of ballet dancers*, 12.30pm

November 30: Mark Brown, *Bioelectric correlates of inaccurate motor performances*. 12.30pm

*Post-graduate student seminars

All seminars are held in the Recreation Laboratory in Building 8. All enquiries to Mark Brown, ext. 3495.

Centre for Staff Development

November 23 and 30: Jeff Owers, University Occupational Health and Safety Co-ordinator, *Occupational Health and Safety for Supervisors*, As part of the Training for Supervisors series, this course is designed to advise supervisors of their responsibilities in terms of Occupational Health and Safety and to assist with the development of the skills necessary to fulfil these responsibilities. Academic and general staff are invited to attend. Also, those staff members who are not at present supervisors but who may be in that role in the future, should consider participating. Staff Training Room, (top floor- Admin. Building) 9am-noon. Closing date for applications, Nov 16.

December 5 and 6: Personnel, EEO and Centre for Staff Development, *Selection Techniques Workshop for General Staff*. In line with the University's commitment to EEO and legislative responsibilities, this

workshop will provide guidelines on how to select staff on the merit principle. Participants will become familiar with the University's administrative procedures, and be given the opportunity to participate on a selection committee which will conduct a mock interview for a position. It is now University policy that only those staff members who have completed this workshop should comprise selection committees.

Room 19.1004 (Management Dept.), 9am-4pm. Closing date for applications, Nov 26.

For further information or to obtain an application form, contact Jan James, Staff Development Officer, ext. 3946.

Staff Development workshops schedule for November:

November 13: Professor Bill Lovegrove, *Getting Your Paper Published, Sciences*, 9.30-11.00

November 14: Professor Ron King, *Methods of Student Assessment*, 9.30-12.30

November 15: Dr John Panter, *Setting Multiple Choice Tests*, 9.30-12.30

November 16: Professor Stephen Hill, *Getting Your Paper Published, Humanities*, 9.30-11.30

Stop Press

NOWRA VISIT

THE Pro Vice-Chancellor, Professor Lauchlan Chipman, and the Director of Professional and Continuing Education, Professor Michael Hough, will be visiting Nowra on November 15 to discuss improving access to the University for residents of Shoalhaven.

AARNet Seminar

December 13, 12.30-1.30pm, Pentagon 1.
DETAILS NEXT WEEK