



Distributed each Tuesday

Deadline for copy noon Monday  
of previous week

Editor: George Wilson, Tel. (042) 270391

1 March 1988

## SERIALS IN THE MICHAEL BIRT LIBRARY



Serials will again be available for loan from the beginning of Session 1. The loan period has been extended from one week to two weeks for academic staff and postgraduate (by research) students. Other postgraduate and

undergraduate students may not borrow serials. To ensure the widest possible availability of current journals, issues received within the past 12 months will not be available for loan.

These issues will be shelved in a new and greatly improved 'Current Serials Display area' which is located on the western side of the second floor in the extended building. Staff photocopying facilities and comfortable seating are provided in this area, which also incorporates a new books display and the newspaper collection.

After 12 months, serials will be bound (as funds permit), and relocated in the main sequence on the eastern side of the second floor.

To locate particular titles check the Serials Catalogue ('Visidex'), in the Current Serials Display area. If an entry has a blue sticker next to the Dewey number, then the current issues of that journal will be found in the Display. Earlier volumes will still be shelved in the 'old' serials sequence. Entries in the 'Visidex' without blue stickers indicate those titles which are placed immediately on the 'old' shelves (usually donations or government publications).

The on-line catalogue (OPAC), may be used to check whether the Library holds a particular title and to obtain its Dewey number but detailed holdings are available ONLY in the 'Visidex'.

Not all serials have been barcoded and initially there may be delays when borrowing serials so please allow for this if you need to borrow a serial.

Readers are encouraged to use the new area for reading or copying thus ensuring the widest possible availability of serials for all users.

Please note that serials not returned on or before the due date will be subject to fines.

If you have any problems or queries place contact the Serials Librarian, Neil Cairns, on ext 3544.



*Mr George Cepak*

### WOLLONGONG ATTRACTS CORPORATE MANAGEMENT EXPERTISE

The University of Wollongong has made two senior appointments from the ranks of private sector management. The move is intended to further the University's strategy of building its executive strength through teaming the dynamism of the corporate sector with the best of academic administrators. Skilled senior executives are increasingly attracted to work with the University because of its growing reputation and leadership in university affairs.

Mr George Cepak has been appointed Planning and Marketing Manager to co-ordinate the strategic planning mechanism, promotion and marketing of the University. He was previously Marketing Manager for the international chartered accountants, Price Waterhouse. He has also held the positions of Market Research and Commercial Services Manager for Alcan Australia Ltd, Marketing Manager for Elders Metals Ltd, Associate Manager Corporate Planning for Public Transport Commission, and Planning Manager for Vindex Tubemakers Pty Ltd.

*Continues on back page*

# General Notices

## WOLLONGONG LAW DATA BASE FEATURE OF LAW FOUNDATION CELEBRATIONS

The Australian Corporate Law Data Base project, set up at The University of Wollongong during 1983, was demonstrated in a display of high technology of the 20th anniversary celebrations of the Law Foundation of NSW on Friday February 26.

The project has been funded by the Law Foundation through a series of grants now totalling \$66,000. It was established by Ken Hale and Jim Jackson from The University of Wollongong's Department of Accountancy and Legal Studies.

This unique database involves the application of computer technology to law and enables sophisticated research into the increasingly complex area of Australian Corporate Law. It contains an analysis of over 2000 reported cases and 800 journal articles on corporate law from all Australian jurisdictions. An analysis of data from it has already concluded that there is a variation in an applicant's chances of success in an appeal in different states of Australia. CLIRS Limited carries the data base on its national computerised legal information retrieval system.

Also at the anniversary celebrations a book by Ken Hale and Jim Jackson was launched *Australian Corporate Law Reference 1986-87 -- A Digest of Cases and Journal Articles*. This is their second book. The first was launched last year and was called *The Australian Corporate Law Reference*.

## SALUTE TO LANDSCAPE STAFF

In an institution such as ours, where the intellect is revered as highly as it is, it's possible for the critical faculty to manifest negatively as criticism of the University Administration, or peers and others. In other words,

negative criticism often presents itself as the 'easy option'. In such an environment, praise of good works is far less common. I felt it was time I redressed this imbalance, in some small manner at least.

My reason for writing is to congratulate the landscape staff at this University for the excellent work they have put in over the last few years around our campus. I have noticed the landscaping improving each and every year since I started working here five years ago. Let me go on the record as one staff member who appreciates your efforts. May you continue to beautify our place of work.

John Fulcher  
Lecturer

Dept of Computing Science

## PUBLIC SERVICE ASSOCIATION OF NSW UNIVERSITY OF WOLLONGONG SUB-DIVISION

At a general meeting on February 10 to hear reports on second-tier negotiation progress, a motion was carried to hold a further meeting on February 22.

The Union has always believed that it should be negotiating on the second-tier along the path pointed out in the government's Australia Reconstructed Initiative in line with the ACTU document *Future Strategies for the Trade Union Movement*.

Our Union has been negotiating with the University on several matters lately and we have been making progress. We believe these negotiations will become more important in the future, particularly if aspects of the Dawkins Green Paper on Higher Education are to be realised.

To gain the full second-tier increase we must be able to show that we can save a major part of it in the short term and all of it in the long term.

Using the Restructuring and Efficiency guidelines and some imagination it should not be a difficult task.

Tony Kent  
Secretary

Landscapers seen here are, from left, Judith Parkinson and Steve Lintern (since this picture was taken Mr Lintern has moved on to a more senior position at the Sydney Botanical Gardens)



## Concerts, Exhibitions and Entertainment

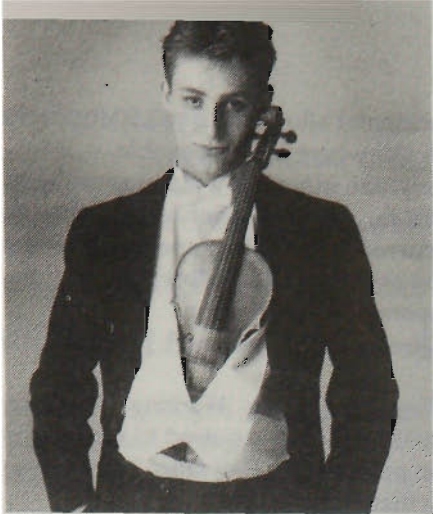
### RICHARD TOGNETTI AT PERFORMING ARTS CENTRE

Richard Tognetti, violinist son of Reader in Mathematics Keith Tognetti, has been selected to give a recital for the Gala Opening Festival at the newly completed Illawarra Performing Arts Centre, on Tuesday March 8 at 8 pm. His program includes some sparkling pieces from Paganini, Mozart and Schubert. The recital will be repeated at the Sydney Conservatorium on Friday March 11; this concert is being arranged by the Australian Musicians Academy, whose Convener is Abe Segal from our Department of Physics.

This is a great honour for Richard as the only other soloist to be given a full recital during the Festival is the famous pianist Roger Woodward.

Richard, aged 22, began studying the violin in Wollongong at the age of five. His first teacher was Harold Brissenden, a leading exponent of the Suzuki method, who was in charge of music at the old Teachers College. He then studied with the wife of the great viola virtuoso William Primrose and was privileged to have occasional lessons from this great master.

After winning several concerto competitions and touring overseas as soloist with youth orchestras Richard



*Richard Tognetti*

graduated with the Performers Diploma from the Sydney Conservatorium. Since then he has been a member of the Australian Chamber Orchestra and on occasions he has been their soloist and leader. He has played solo with the Sydney Dance Company and founded and directed the Huntington Chamber Orchestra. He was awarded the Rothmans Cultural Foundation Award for the Arts in 1987 and this, together with Queen Elizabeth II and other scholarships, allowed him to study with the internationally renowned teacher, Igor Ozim, at the Berne conservatorium. He has now been admitted to the prestigious Soloist's Diploma. He returned recently as a member of the famous Camerata Berne Chamber orchestra.

#### **AVCC ASSOCIATE MEMBERSHIP TO BE ESTABLISHED**

The Australian Vice-Chancellors' Committee is to establish a new category of membership following changes to the structure of higher education. The move to introduce associate membership could open the way for private universities, such as the Bond University, now being set up on the Gold Coast, to become part of the national body.

At its meeting in Perth on February 10, the AVCC agreed to seek legal advice on changes to its memorandum and articles of association to allow for associate membership. The committee indicated that the new category of membership was expected to provide full rights but that associate members would not be able to vote.

The secretary of the AVCC, Mr Frank Hambly, said after the meeting that the associate membership was likely to apply in two situations. The first was when a university was still in the process of being set up. If, for example, it had been established under an Act of parliament but had not admitted students, it would be eligible to apply for associate membership pending further development. Associate membership might also be given to institutions which applied for full membership but which did not meet AVCC criteria.

The move to introduce associate membership follows a decision late last year to admit the Curtin University of Technology to full membership of the AVCC. The AVCC established a visiting committee to assess whether Curtin, previously the Western Australian Institute of Technology, should join the AVCC.

Mr Hambly said the AVCC's decision to introduce a new category of membership recognised that the structure of the sector was changing. 'The AVCC is responding positively to the changes,' he said.

The AVCC, meeting for the first time this year, also agreed to changes in the organisation of the Canberra secretariat and the direction of its work to meet the challenges of the government's proposed overhaul of higher education. The secretariat is expected to increase in size from 10 to 14, and has been given the role of developing more detailed policy responses and operating as an additional source of advice to government.

The AVCC is drawing up a response to the Government's Green Paper on Higher Education. This is expected to be finalised at the next meeting of the AVCC on March 15, and released shortly afterwards.



*A conference examining the issues of care, concern and coping relating to aging, and the needs of the Australian population, was held at the University on Friday and Saturday February 19 and 20. Above is Professor John Snowdon, from the East Area Health Service, who gave Friday's keynote address. Saturday's speaker was Mr Michael Fine, from the Sydney College of Advanced Education*





## Staff Roundup

### ARE YOU STUDYING?

Members of the general staff who are undertaking a course of study may be eligible for study time.

Full details of the study time scheme are nominated in a booklet available from the Personnel Services Branch. There are several options under the scheme. Staff are advised to read the book carefully to determine their best options.

Briefly, the study time scheme aims to provide assistance to staff members studying external (correspondence) or part-time courses approved by the University. Generally, the course must be relevant to the staff member's work or future work at the University. Time off work can be granted as: time each week up to a maximum of four hours to attend classes and/or undertake private study; accrual of days to use for study prior to the examinations up to a maximum of five days per year (or two and-one-half days per session); time to attend compulsory residential schools (for external students). Leave to attend examinations is also available to staff granted study time.

Staff wishing to apply for study time should contact Jenny Jarman on ext 3935 for an application form and booklet. In the first instance staff are urged to discuss their applications with their supervisor or Head of Department/Section. Completed application forms and/or queries should be directed to Wendy Raikes, Staff Training Co-ordinator, ext 3946.

### TRANSPORT, TRAVELLING AND MEAL ALLOWANCES

Transport Allowances used by the University (effective 21 September 1987) are:

Engine Capacity	Rate
Over 1600cc	24.1 cents per kilometre
1600cc and under	20.2 cents per kilometre

A Travelling Allowance is payable to members of staff who are required to journey on official business and whose journey requires accommodation at a hotel/motel etc. Two rates apply (effective 11 January 88):

1. *Capital City Rate* \$108.15/per 24 hour period
2. *Elsewhere* \$85.90/per 24 hour period

The abovementioned allowances are in respect of the cost of meals (ie breakfast, lunch and evening meal) and accommodation. The amount payable per hour for a portion of a day is in all cases 1/24th of the appropriate daily rate.

As an alternative to claiming the allowances set out above, members of staff may elect to claim reasonable actual expenses incurred for meals (ie breakfast, luncheon and evening meal) and accommodation during the period of absence. Members of staff electing to claim actual expenses must provide receipts in support of their

claim. An incidental allowance of \$2.50 for capital cities and \$1.75 for elsewhere is also payable.

During any one itinerary, a claim must be made on a uniform basis, ie, claims will not be permitted for actual expenses incurred during time spent at one temporary work location and for a fixed allowance for time spent at another temporary work location.

Meal Allowances (effective 11 January 1988) are as follows:

#### 1. Meal Allowances When Working Overtime

A staff member, when required to work overtime, is entitled to be paid a meal allowance in addition to any overtime payment as follows:

- a) When required to continue working beyond two hours immediately after normal finishing time (except when the overtime work ceases no later than 6 pm) – \$12.65
- b) When required to work overtime for more than five hours on a Saturday, Sunday or Public Holiday – \$8.50
- c) When required to commence duty at or before 6 am being at least one hour before the employee's usual starting time – \$6.75

#### 2. Meal Allowance When Away From University

When a member of staff is required to proceed away from the University to a capital city or other area outside the Wollongong region and does not remain in such place overnight, such member of staff may claim the following allowances for meals:

- i) Breakfast – \$6.75
- ii) Lunch – \$8.50
- iii) Evening meal – \$12.65

For details: Peter Maywald, ext 3798.

### ACADEMIC SUPERANNUATION ARRANGEMENTS

1. All academics who are currently contributing to the State Public Service Superannuation Scheme (SPSSS), state Superannuation Fund (SSF) or Professorial Scheme will not be eligible to join the new Superannuation Scheme for Australian Universities (SSAU).
  2. Existing members of staff (i.e. those on duty prior to 1 December 1987) in superannuable categories (including limited term employees with a term of not less than two years) who are not contributing to any of the above superannuation schemes will be given a once only option to join SSAU. This option will remain valid for three months from 29 January 1988. Permanent full-time academics appointed prior to 1 December 1987 (not including limited term academics) also have the option to join SPSSS, before 31 March 1988. This scheme will be closed to new members on 31 March 1988.
  3. The Professorial Superannuation Scheme was closed to new members as of 1 December 1987.
  4. The University has been a member of SSAU since 1 December 1987. All new academic appointments since 1 December 1987 must join SSAU as a condition of their appointment.
  5. Any new academic staff joining the University after 1 December 1987 who are currently members of SPSSS or SSF may -
    - i) be able to seek exemption from SSAU and remain in SPSSS or SSF;
    - ii) preserve their benefits with SPSSS or SSF and join SSAY;
    - iii) transfer their withdrawal benefits to SSAU and join SSAU.
- Inquiries to Barbara Smith, ext 3914 (Wednesday to Friday).

## CURRENT VACANCIES

Graduate/Administrative Assistant Grade 1, Academic Services, closing date March 4

Laboratory Assistant Grade 1, Geography, closing date March 4

Student Tutor, Aboriginal Education Unit, closing date March 4

Computer Trainee, Computer Services, closing date March 4

Graduate/Administrative Assistant Grade 1, Student Services, closing date March 4

Secretary, Planning and Marketing, closing date March 4

General Library Assistant, Library, closing date March 4

Professional Officer (limited term), Civil and Mining Engineering, closing date March 4

Research Assistant, Accountancy and Legal Studies, closing date March 4

Lecturers in Information Systems, (2 positions -- 1 continuing, 1 limited term), Industrial and Administrative Studies, closing date March 4

Lecturer (temporary and part-time) in Screen Studies, English, closing date March 8.

## STAFF CHANGES

### New Starters

Mr N. Masi, Bricklayer/Paver, Buildings and Grounds

Mr L. Stillson, Research Assistant, Centre for Multicultural Studies

Ms C.J. Medcalf, Research Assistant, Centre for Multicultural Studies

Mr W. Munday, Attendant Cleaner, Buildings and Grounds

Mrs C. Plumbridge, Teaching Fellow, Accountancy and Legal Studies

Mr G. Cepak, Manager, Planning and Marketing

Mrs B. Evans, Teaching Fellow, Mathematics

Mrs J.A. Trotter, Teaching Fellow, Mathematics

### Transfers/Promotions

Mrs R.D. Griffiths, Lecturer, Health Services

Mrs R.M. Muston, Lecturer, Uniadvice

Mr D.J.P. Considine, Lecturer, Accountancy and Legal Studies

### Departures

Mr C.A. Cruse, NESAs Trainee, Centre for Teaching Development

Mr N. Stone, Technical Officer, Computer Services

Mr M. Bray, Lecturer, Economics

Mrs J.L. Jennings, Graduate Assistant, Academic Services

Dr A.I. Lee, Research Fellow, Mathematics

Mr B. Natalenko, Graduate Assistant, Planning and Marketing

Ms L. Sandy, Secretary, Physics



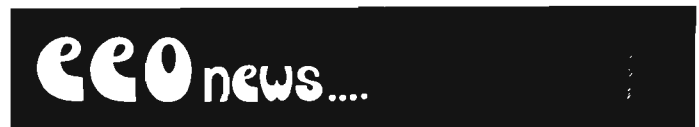
## FIRE TRAINING

Arrangements have been made with the Board of Fire Commissioners for members of the Fire Brigade to conduct training sessions in the use of fire extinguishers for University staff.

A session will be held on Thursday March 3 between 9 am and noon adjacent to the tennis courts near the western car park. Involvement by individual staff members will be brief – about 15 minutes at most.

It is hoped that each Department or Unit will attempt to have at least 2 members trained in fire extinguisher use. This is the last session in the series (others were held in February) and Heads of Departments/Units are asked to ensure their department is adequately covered.

Enquiries may be directed to Reg Whitton, ext 3914.



## UPDATE ON ACTIVITIES

The women's career development network, 'Third Thursday', held its inaugural meeting on February 18 over lunch in the Bistro. Eight women from the initial career development workshop attended, with almost everyone having some career progress to report. The interchange was lively and stimulating and provided support and impetus for group members. We are all looking forward to next month's lunch, challenged by the successes of our colleagues to work on our own personal development, in order to have something concrete to report.

We are happy to report that John Nothdurft, lecturer in law, is presently in Melbourne training with his new seeing-eye dog. Although he will not be taking lectures this first week of classes, you may see him on campus with *Frosty* and the trainer as they are both put through their paces. At the risk of appearing unfriendly, we would ask you to refrain from speaking to either of them. During this initial training period it is critical that nothing interferes with the bonding process that will be taking place, as the dog learns to guide and obey his new master. Once this training is done, I am sure John will be happy to introduce you to his new companion. I am certain all John's friends on campus will join me in wishing him well in this new venture. Hopefully, it will ease some of the strain of commuting by train from Sydney.

Finally, we would like to announce that we have a job rotation in the EEO Unit. Janet Sturman, our secretary, has switched places with Debbie Turner, formerly of the School of Industrial and Administrative studies, until the end of June. I would like to remind all those who have made inquiries, that the Job Rotation program does permit self-initiated switches if the proposal is deemed appropriate by Personnel Services and the supervisors involved. We welcome Debbie to our staff and wish Janet all the best in her new role.

Peg MacLeod  
EEO Co-ordinator

## LATE COPY

Thus early in the year we have begun having to hold over, or discard, material arriving too late for publication in *Campus News*. The deadline for copy appears on page 1 of each issue. The latest time at which copy may be accepted is noon on Monday of the week preceding that of publication

# ELECTION OF STUDENTS TO ACADEMIC SENATE

Election of students to academic bodies of the University are currently being organised.

Nominations are called for the following positions

1. Five students to the Academic Senate  
- *elected by and from students undertaking degrees and diplomas at the University.*
2. (a) 16 to the Faculty of Arts  
(b) Eight to the Faculty of Commerce  
(c) Four to the Faculty of Education  
(d) Eight to the Faculty of Engineering  
(e) Four to the Faculty of Mathematical Sciences  
(f) 12 to the Faculty of Science  
- *being two students from each member*

*Department/School of the relevant Faculty elected by and from the students enrolled for a degree or diploma in the University and taking subjects or courses offered by the Department/School for such degree or diploma (a list of the member Departments/Schools of the Faculties is set out below).\**

\*This provision for representation of Department/Schools does not apply to the Faculty of Education.

3. One to the Board of Studies for Information and Technology and Communication.  
- *elected by and from students undertaking the degree*
4. One to the Board of Studies for Interdisciplinary Studies  
- *elected by and from students undertaking one or more General Studies subjects*
5. One to the Board of Studies for Political Studies  
- *elected by and from students undertaking subject(s) in one of the Political Studies streams*
6. One to the Board of Studies for Environmental Science  
- *elected by and from students undertaking the degree*
7. Two to the Library Committee  
- *elected by and from the students of the University*
8. Two to the Physical Facilities Committee  
- *elected by and from the students of the University*

Nominations for these positions should be made on the appropriate forms obtainable from the Elections Officer, Carol Warren, University Administration Building, the University SRC Office or the Institute ISA Office. Nominations must reach the Returning Officer (University Administration Building) by 5 pm on Friday 11 March 1988.

To be eligible to nominate a candidate or to be nominated for any position, a person must be enrolled in a degree or diploma in the University, as well as being enrolled in subjects or courses as required for the electorate to be represented, where applicable.

The terms of office of all positions shall begin on 1 April 1988 or as soon after that as the results of the elections are declared. All positions expire on 31 March 1989.

If the number of nominations for any election exceeds the number of vacancies an election by personal ballot will be held. In the event of an equality of votes, the matter will be determined by lot.

Voting will take place on Wednesday and Thursday, 23

and 24 March 1988 between 9 am and 5 pm in the Student Enquiries Office, Administration Building.

Full details of the terms of reference and the membership of the bodies involved are contained in the document entitled 'Committee Structure', copies of which are available for perusal from Carol Warren in the Administration Building, the Student Enquiries Office, Administration Building, the SRC Office and the ISA Office. Other details may be obtained from the Elections Officer, Carol Warren, in the University Administration Building.

## Faculty of Arts

### Member Units

Department of English  
Department of Languages  
Department of History and Politics  
Department of Philosophy  
Department of Psychology  
Department of Science and Technology Studies  
Department of Sociology  
School of Creative Arts

### Associate Units

Boards of Studies for  
. Information Technology and Communication  
. Interdisciplinary Studies  
. Political Studies

## Faculty of Commerce

### Member Units

Department of Accountancy and Legal Studies  
Department of Economics  
Department of Management  
School of Industrial and Administrative Studies

## Faculty of Education

### Member Units

School of Learning Studies  
School of Policy and Technology Studies in Education

## Faculty of Engineering

### Member Units

Department of Civil and Mining Engineering  
Department of Electrical and Computer Engineering  
Department of Mechanical Engineering  
Department of Metallurgy and Materials Engineering

## Faculty of Mathematical Sciences

### Member Units

Department of Computing Science  
Department of Mathematics

## Faculty of Science

### Member Units

Department of Biology  
Department of Chemistry  
Department of Geography  
Department of Geology  
Department of Physics  
School of Health Sciences

### Associate Units

Board of Studies for Environmental Science

K.E. Baumber  
Returning Officer

# Research Funds

The sources of research funds given below are available to members of academic staff. Further information including application forms may be obtained from Kim Harris (ext 3866). Intending applicants are reminded that all research applications must be forwarded through the Office of Research and Post-graduate Studies.

## AUSTRALIAN RESEARCH COUNCIL

The Australian Research Council has invited applications for research support in 1989 in these categories:

**Research Grants** - Research grants are offered for research projects in any discipline except the medical and dental sciences.

The ARC also provides support for research projects in priority areas of national interest. The Council has identified Marine Sciences and Technologies as a national area for support in 1989.

**Research Fellowships** - ARC is offering research fellowships in the following categories:

- fundamental research
- national interest research
- industry based research

Fellowships will be awarded to persons holding a PhD or equivalent qualifications, research or professional experience.

Applications are also sought for 15, three-year Queen Elizabeth II, fellowships annually to young researchers of exceptional promise and proven capacity for work. The usual age limit is 30 years but consideration will be given to older people with fewer than five years postdoctoral experience where academic career has been delayed or interrupted.

Applications close with the University on March 11.

## CSIRO/UNIVERSITY OF WOLLONGONG COLLABORATIVE SCHEME 1988/89

Applications are invited for the 1988/89 grants under the CSIRO/University of Wollongong Collaboration Scheme. Total funds available are \$60,000 and grants are normally between \$5,000 and \$15,000. Grants are made on an annual basis.

Applications close with the University on March 31.

## NH&MRC - PUBLIC HEALTH RESEARCH

The Public Health Research and Development Committee of the NH&MRC invites research applications in the areas of:

- Primary Health Care
- Breast and Cervical Cancer
- Community Mental Health

Applications close with the University on April 22.

## AUSTRALIAN ACADEMY OF THE HUMANITIES

Applications are invited for two grants-in-aid for short term study abroad during 1988/89 to scholars resident in Australia and working in the fields of Humanities.

The grants will be \$1,000 each and cannot be combined with any other travel grant given to undertake the same research. The Academy will not award grants to attend conferences or to students enrolled in a higher degree.

Applications close with the University on June 16.

## PREVIOUSLY REPORTED IN CAMPUS NEWS

	Internal Closing
Mahvi Cultural Scholarships	March 7
Research into Primary Production Grants	March 14
Comparative Anatomy Postdoctoral Fships	March 15
Elizabeth and Frederick White Research Conference	March 17
US Public Health Postdoctoral Fships	March 17
Research into European Integration	March 17
Pure and Applied Science in Engineering Research Scholarships	March 21
Rutherford Scholarship	March 21
Field Sciences Research Facility	March 31
CSIRO/University of Wollongong Collaborative	March 31
Australian Water Research Advisory Council Fships	March 31
Australian Water Research Advisory Council Programs	April 13
Research into Primary Production Fships	April 15
NH&MRC Visiting Postgraduate Research Scholarships	April 15
Rudi Lemberg Travelling Fships	April 16
Clive and Vera Ramaciotti - Travel Grants	Any time
Earthwatch	Any time
Criminology Research	Any time
Pig Research Council - Support for Eminent Visitors	Any time
MERA Project Grants	Any time

## Scholarships and Prizes

### AUSTRALIA-CHINA EDUCATION CO-OPERATION PROGRAM

Nominations are invited from Australian universities and colleges to nominate Chinese postgraduate students for places in the scholarship program for the 1989 academic year. The program is funded by the Australian International Development Assistance Bureau (AIDAB) and administered by the Department of Employment, Education and Training.

Nominations should also reflect Chinese development needs.

Applications close with the University on May 17.

## Seminars

### DEPARTMENT OF CHEMISTRY

Date: Friday March 4, 11.30 am

Speaker: Dr John Carver, The University of Wollongong

Topic: Two dimensional <sup>1</sup>H NMR studies of proteins.

Seminars held in the Chemistry Lecture Theatre, Room 18.208.

Coming Soon: Dr Joannon, Dr Westwood, Dr J. Stanton and Professor B. Hibbert

# COMPUTER TRAINING COURSES

for

## Computer Awareness, Computer Programming and Most Popular Application Packages

PC Operation and Overview	1 day	\$120
Introductory and Advanced DOS	1 day	\$180
Lotus 1-2-3	2 days	\$395
dBase III plus	2 days	\$395
Framework II	2 days	\$395
Desktop Publishing	2 days	\$450

### ALL COURSE PARTICIPANTS RECEIVE:

Small group learning with class size limited to ten (10)  
Individual 'Hands-on' experience  
Expert tuition from qualified staff  
All instructional material  
Lunch and refreshments

### ENQUIRIES/REGISTRATIONS

PH: 268884 EXT 3777

Applicants on current waiting lists given first preference

### ITC COMPUTER TRAINING

The Illawarra Technology Centre  
PO Box 1144, Wollongong 2500

## SENIOR EXECUTIVE APPOINTMENTS

*from page 1*

Since 1986 he has been advising the NSW Parliamentary Select Committee on Small Business. He holds a Bachelor of Science (Statistics) from Sydney University and a Master of Business Administration (Marketing) from Macquarie University. Mr Cepak began at Wollongong on February 18.

Mr Ian Carter has been appointed General Manager of the University-based commercial consulting and contract-research company, Wollongong Uniadvice Limited. Mr Carter comes from PA Management Consultants. He has also been employed as Research Officer, Australian Treasury; Financial Analyst, Qantas Airways; Consultant, Peat, Marwick, Mitchell and Co.; Manager, Economic and Strategic Planning Unit of Citibank NA; and has worked as an independent consultant. He holds a Bachelor of Arts (Hons) from Macquarie University and a Master of Commerce from the University of NSW. Mr Carter takes up his appointment today, March 1.

The Vice-Chancellor, Professor Ken McKinnon, said 'Both these positions required the appointment of entrepreneurially orientated executives with records of creative business development, people leadership and administrative skills. They will join a senior management team committed to maintaining the University as a modern, energetic institution, taking a leading role in the emerging society'.

## Advertisements

### HOUSE WANTED

New lecturer in Education urgently requires 3/4 bedroom unfurnished house close to University on 3/4 months lease. Contact Michael Wilson, ext 3792

### WRITERS WANTED

Written articles wanted suitable for women's liberation monthly journal. Articles must deal directly with women's issues - socio-econo, employment, education, child protection, changes in law as affecting women, discrimination etc. \$60 minimum for 1000 words (thereabouts) for accepted articles. Send to Editor, Unit 8, 29 Belmont Ave. North, Glen Iris, Vic. 3146.

### TYPEWRITERS FOR SALE (3)

One big Olivetti Lettera, one small portable (both manual) and one small electric Brother. All good condition - just superseded - prices neg. but cheap! Contact Leo Sturman, ext 3891 or 272937 after 5 pm.

### TO LET

Town House - Mangerton Gardens - 3 bedrooms, 2 baths, 3 toilets. Woodlawn Ave, Mangerton. Rent \$150 per week. Phone 847910.

### FULLY FURNISHED HOUSE FOR LEASE APRIL 1 TO JULY 7

This three-month lease may be of interest to visiting academics or new staff at the University. The ultra modern tri-level house is 100 metres from the beach at Thirroul, has 3/4 bedrooms, main with ensuite, large living space, modern kitchen, large garage, water views, private block. The house will be leased complete with furniture, crockery, linen and so on. Contact Jim Jackson, Department of Accountancy and Legal Studies, ext 3629 or 673705.

### ACCOMMODATION WANTED

Tutor/postgraduate student urgently requires s.c. flat/unit to \$80. Unfurnished. Please contact Helen tel. 746566 or 835621 (am or evening).

### HOME FOR LEASE

Three bedroom, fully furnished home, three minutes walk to campus, available for lease from July 1988 to January 1989. Contact Ted Booth, ext 3878.