



THE UNIVERSITY OF WOLLONGONG

CAMPUS NEWS

A WEEKLY INFORMATION SHEET

7 JUNE, 1985

Deadline for copy 12 noon Monday

Distributed each Friday.

Editor: George Wilson, tel. (042) 270073

NEW LANGUAGE CENTRE IN EDUCATION

Eleven members of the Faculty of Education, with common interests in language education, have formed a new Centre for Language and Cognition. The Centre is located in the area previously occupied by the Department of Education. The focus on language education is based on the members' wide-ranging concerns with specialist aspects of the study of language in education, including:

- * literacy processes and their development (Peter Geekie)
- * language curriculum at Primary and Secondary levels (Bob Colvin and Pat Farrar)
- * teacher development in language areas (Gary Kilarr)
- * cognitive processes in language and literacy (Bill Winsor)
- * children's literature (Michael Stone)
- * creative writing (Ron Pretty)
- * language curriculum evaluation (Peter Geekie)
- * English as a second language (ESL) (Jenny Hammond, Ron Pretty, Diana Slade).

With the arrival of Ms. Diana Slade there is now a strong interest in the Centre in ESL, as three of its members are now working in this area.

There is a marked preference at the Centre for the adoption of whole language approaches to their research and curriculum development work.

The Centre is preparing submissions for projects that will involve most of the Centre staff in team research activities; the emphasis here will be on very close collaboration with teachers in the schools, who will be regarded as co-investigators in all research activities.



UniAdvice organizes conferences, seminars and special courses, tailor made to the requirements of the client. This service is available to university groups and to industry, government or community organizations. Enquiries to Peter Sophios on (042) 270076.

At the forthcoming Australian Reading Association National Conference in Brisbane the Centre will be represented by Peter Geekie, Julia Fyffe, Jenny Hammond and Bill Winsor. Each will be giving papers in the areas mentioned above.

Of particular interest is the work of Jenny Hammond at Cringila among children whose first language is not English. She has now established that, while these children need special attention and resources to assist their language and literacy learning, the underlying processes involved are no different to those that apply in first language learning.

One of Bill Winsor's papers, on cognitive processes in reading, is the basis for a chapter he is preparing for a new book on Miscue Analysis. It is interesting to note that the Deputy Vice-Chancellor, Professor Peter Rousch, also contributed a chapter to the first book in this series of studies.

There are currently a number of public seminars and sponsored visits being planned by the Centre, which also conducts regular research colloquia among its own members. Additionally, a range of course sequences in the Master's degree program is being offered by the Centre's staff.

For further information about the Centre, contact its Executive Officer, Bill Winsor, in Building 19.1040 (extn. 3687).

UNIADVICE GOES TO AIR

In the wake of the launching of the UniAdvice journal the UniAdvice manager, Mr Peter Sophios, was approached by the Radio station 2WN to arrange for interviews with 'contributors' to the journal.

Topics nominated by ABC staff have been recorded and the interviews are to be used on local programs and on 'Morning Extra', which is broadcast nationally.

Topics and researchers concerned are: Sports Medicine (Mr T. Penrose, Institute of Education); Electrostatic Precipitation Study (Dr K.J. McLean, Electrical and Computer Engineering); Shape Memory Alloys (Professor N. Kennon, Metallurgy); Technology and Social Change (Mr D. Rowland, TASC); Drought Resistance in Plants (Dr R. Whelan, Biology); and Thyroid and Hormone Research (Dr A. Hulbert, Biology).

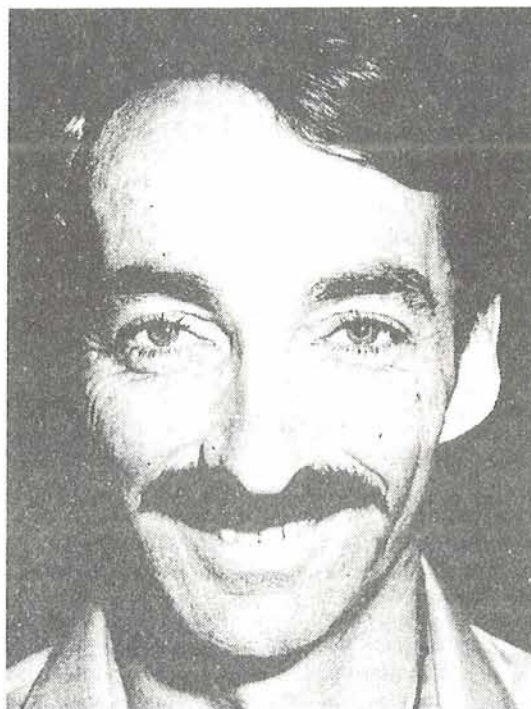
THE KRAUTGONG EFFECT

A Benefit From Collaboration of Wollongong and German Biologists
by Duncan Brown

The Biology Department has recently identified a new synergistic effect in some areas of plant biology and microbiology. The synergism has arisen from the development of close ties between some members of the Biology Department and German colleagues.

In 1981, the year of the International Botanical Congress in Sydney, we had visits of several days duration from Professor Hans Heldt of Goettingen (who, among other things, learnt the joys of putting banana on his porridge) and Professor Hartmut Gimmmler of Wuerzburg (who, among other things, learnt that a dunny is called a dunny). In 1984, Professor Klaus Wegmann, of Tuebingen, spent three and a half months in Wollongong under the German/Australian Bilateral Agreement on Science and Technology. At present, Dr. Ross Lilley of the Biology Department is spending his second study leave in Goettingen with Hans Heldt; Hartmut Gimmmler is making his second visit to Wollongong, this time on study leave for six months.

Ross Lilley's collaboration with Hans Heldt, which has so far proved to be very fruitful, is based on a mutual interest in the regulation of photosynthesis in higher plants. The other exchanges have revolved around some aspect of microbial water stress physiology. The work done last year by Klaus Wegmann used a thermodynamic technique (microcalorimetry) to obtain information about the physical state of glycerol in the salt-tolerant single-celled alga, *Dunaliella*. The results he obtained contradicted earlier observations he had made using the technique of nuclear magnetic resonance spectroscopy (NMR). In an attempt to resolve this anomaly, Duncan Brown, of the Biology Department, will spend three months in Tuebingen later this year to re-examine the question using NMR.



Dr. Ross Lilley

Hartmut Gimmmler ("Hart" to his Wollongong colleagues) is also interested in a biophysical aspect of *Dunaliella* physiology, namely the acid/base status of both the cytosol and the chloroplast stroma together with the effect on this of stresses induced by changes in salinity. The rationale of this project is that the acidity (pH) is likely to have an important effect in regulating the osmoregulatory response of the organism to salt stress. He also is using the technique of NMR and, for this purpose, he has established a liaison with colleagues at the University of New South Wales. In addition, he is participating in a project within the Biology Department investigating control of starch degradation in *Dunaliella*.

This is also closely involved with osmoregulation since one of graduate students, Arun Goyal, has recently demonstrated that increasing salinity stress causes a progressive shift from photosynthesis to starch breakdown as a source of the glycerol needed for osmoregulation.

Both Gimmmler and Goyal have been studying this problem and their combined efforts so far have been remarkably successful in identifying the contribution of several different enzymes to starch breakdown and, among other things, the probable effects of changes in pH on that process.

In turn this has greatly increased our understanding of factors that select between the pathways involved in glycerol metabolism as the organism is exposed to progressively greater salt stresses.

The Krautgong effect, which is the synergistic nature of the benefit obtained from the collaboration between Wollongong and German biologists, is related to the Norgong phenomenon discussed last year, although not under that name, in *Campus News*. The Norgong phenomenon began when Professor Helge Larsen of Trondheim, Norway, spent a sabbatical six months in Wollongong in 1982 to be followed by six months' study leave for Duncan Brown in Trondheim in 1983. In turn this was followed by a 12-month (1983-84) appointment to Wollongong of Anders Blomberg from Gothenburg, Sweden. You just don't know where it all will end, do you?

PUT WOLLONGONG FIRST

A Unique Personal Opportunity

One of Wollongong's finest public institutions
is its University

Be remembered forever by endowing
the University

*by gift *by bequest
* by bequest reserving life income

For personal and confidential attention call
Giles Pickford of the Friends of the University
on (042) 270076 or 270555

General Notices

YEAR 12 INTRODUCTION DAYS

Year 12 Introduction Days will be held next week on Wednesday June 12 and Friday June 14.

Schools from Illawarra, Sydney Metropolitan, Liverpool and Canberra have been invited. Organisation is by the Publicity and Information Unit.

In 1984 approximately 800 students attended Year 12 Day. Over the years interest has increased steadily. Last year, for example, the program was repeated over two days because of pressure on lecture rooms.

Students assemble at the Pentagon at 9.15 a.m. and have to select which lecture, demonstration, or tour they want to attend each hour.

NSW INSTITUTE FOR EDUCATIONAL RESEARCH

Members of the NSW Institute for Educational Research will be visiting the University on Friday June 21 to share some of their research activities and encourage educational research in the Illawarra.

An informal lunch will be held at 12.30 p.m. followed by presentations of papers at 1.30 p.m. Each paper will provide a brief summary of the participant's most recent research on the themes of relevance to and implications for educational practice.

The meeting will be held in the Institute Council Room. Invitations to attend are extended to all University staff.

Please contact Dr. Lyn Gow (ext 3980 or 3961) if you would like to present a paper and/or attend the session.

TOWN SQUARES OF EUROPE PHOTOGRAPHIC EXHIBITION

Arrangements have been made with the Australian Council for Europe and the European Communities Commission in Canberra for an eminent photographic exhibition depicting the town squares of Europe, to be shown at the Summer School session for two weeks in January, at this University.

From the time of the Greek agora until the 18th century, the town square was the centre of everyday life in European towns and cities - a meeting place as much as a place of trade, and the scene of all social developments.

The exhibition, which consists of some 80 panels, is being brought to Australia in an English version for the 150th anniversary of South Australian settlement.

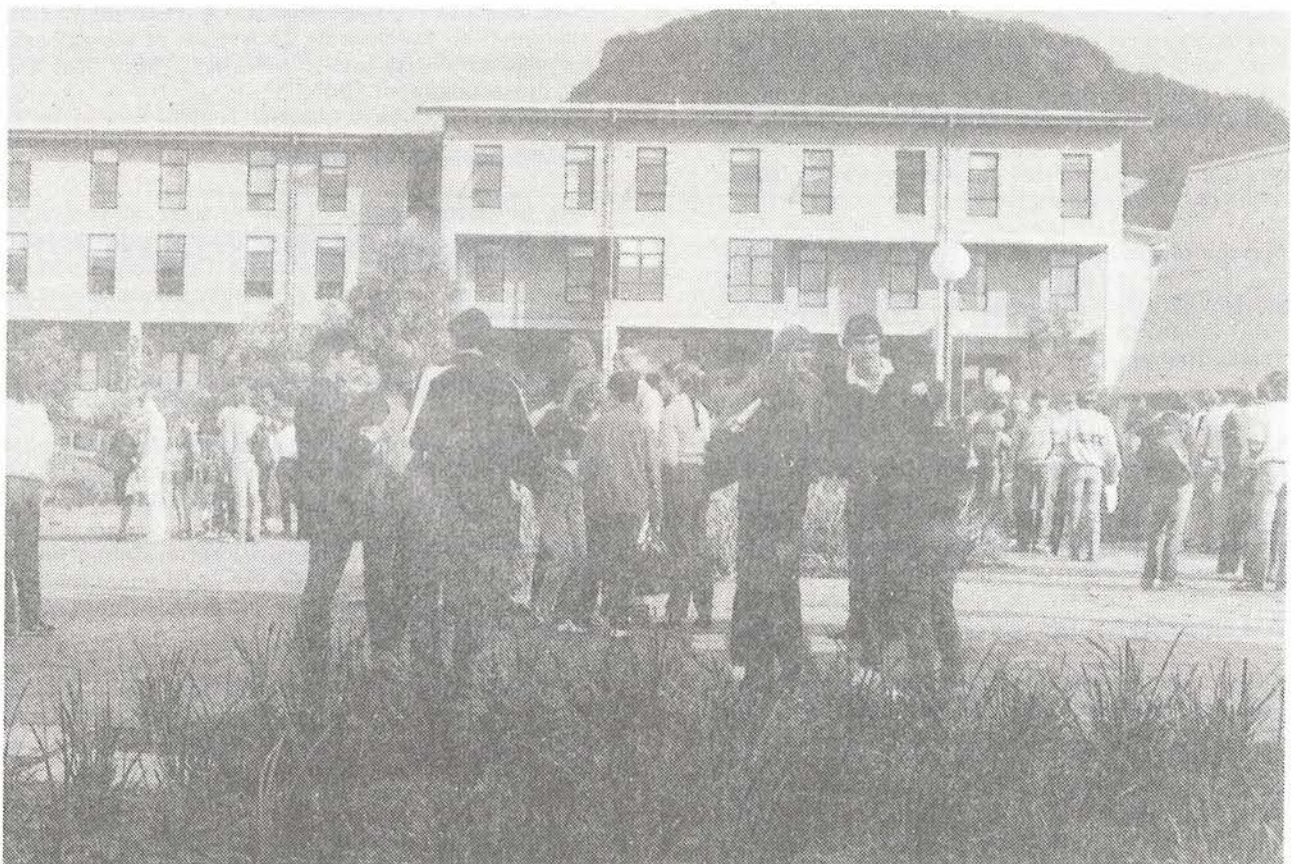
Further details may be obtained from Dr. Phil de Lacey.

SPECIAL GRADUATION CEREMONY IN AUGUST

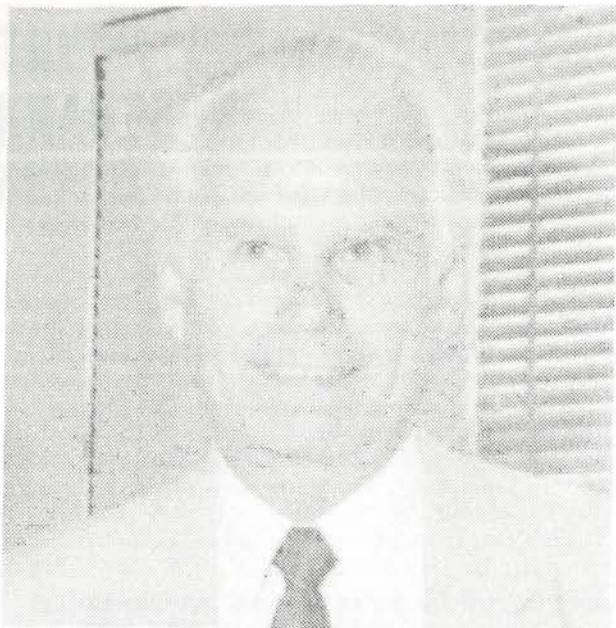
To mark its 10th Anniversary, the University will be holding a special Graduation Ceremony at 5 p.m. on Friday, 9 August 1985, immediately following the Council Meeting that day. People eligible to graduate at this ceremony will be those who have qualified for awards, both undergraduate and postgraduate, since the cut-off date for inclusion in the May graduation ceremonies.

Students who meet the requirements for graduation through success at the examinations at the end of Session I will be eligible.

Enquiries relating to this graduation should be directed to Mr Harry Alla on extn. 3925.



Flashback to 1984 Introduction Day



Professor Alex Clarke

FUTURE FOURTH YEARS TO BENEFIT

It was not made clear in last week's announcement concerning the retirement dinner for Professor Alex Clarke that the retiring Deputy Vice-Chancellor had declined to accept any retirement gift for himself.

He intends to donate any contributions to finance a Fourth Year Scholarship to a meritorious student, from any discipline, to assist that student in financing his/her final year studies.

The dinner to mark Professor Clarke's retirement will be held in the Common Room of the Union on Friday June 28 at 7 p.m., and it is hoped that friends and colleagues will attend.

A three course meal will be served, and the price, including beer, wine and orange juice, is \$20 per head. Please note that vegetarian meals can be provided, but only if ordered at the time of booking tickets.

Tickets from Mrs Faye Franklin, Administration. Bookings close on Friday, June 21.

Any person unable to attend the Dinner but wishing to make a contribution to the presentation is invited to do so by sending such contribution to Faye Franklin, c/- Administration. Cheques should be made payable to "A. Clarke Retirement".

INTERNATIONAL HOUSE

Applications are invited from students and staff of the University for accommodation in Session 2 1985. Application forms are available from International House (extn 3784). Offers of places will be made on June 17, 1985.

ANNUAL REPORT

The 1984 Annual Report was prepared in accordance with the requirements of the new State Government Act covering Annual Reports. The most significant change is the requirement that Reports be submitted by April 30. Although the Act applies to Reports for 1985 and thereafter, the 1984 Report was prepared to this timetable, as a trial run. The Report was considered by Council on 26th April, 1985.



Campus Community Interface

FRIENDS MODEL RECEIVES INTERSTATE ATTENTION

Alderman Keith Phipps, Chairman of the Graduates Group in the Friends of the University, returned recently from the Annual Meeting of the Australian University Graduate Conference (AUGC) in Adelaide.

He reports that the Wollongong concept of University public relations, as exemplified by the Friends organisation, was regarded with great interest by many universities around Australia.

Alderman Phipps told a recent meeting of the Graduates Committee that Flinders University was currently engaged in creating a Graduates body and quoted the following extract from the Flinders report to the AUGC.

'The major focus has been "the role of Convocation", a focus which led to a recommendation for the establishment of an organisation to be known as "the Friends of the Flinders University" being opted by the Annual General Meeting in November.

'Modelled on a program at Wollongong University, the aims of the organisation are to broaden Convocation's contact with its graduates, to maintain their continuing interest and support, to co-ordinate graduate refresher courses, to foster understanding and co-operation with the community to solicit donations, gifts, bequests and legacies and to assist the Council to preserve, develop and maintain the standard, position and facilities of the University.

'The Executive Committee of Convocation has been appointed as the Steering Committee of the Friends of Flinders University and it envisages a busy year ahead for the remainder of 1985.'

COMMEMORATIVE DINNER

The Graduates Group of the Friends, in conjunction with the University, will be organising a dinner following the 9th August Graduation Ceremony to commemorate the University's Tenth Anniversary. More news later.

FRIENDS VISITING CATHOLIC SCHOLAR FOR 1985

The Friends Visiting Catholic Scholar for 1985 will be Bishop Eric D'Arcy, Bishop of Sale in Gippsland. He will visit Wollongong on Friday, 2 August, 1985.

Bishop D'Arcy will give two addresses during his visit on August 2. The first (title yet to be announced) will be at 12.30 p.m. in the Union Common Room. A light lunch will be served.

The second will be to the Wollongong Catholic Dinner Club at Renown Court, 7.00 for 7.30 p.m. and the title of the address will be "Young People Today: Faith and Morals". The cost of this dinner is \$15 per head.

Any interested readers who want further information should contact Arthur Raymond, the Friends Organizer for the visit, on (042) 843860.

Concerts, Exhibitions and Entertainment

SAVE ON TICKETS TO THE AUSTRALIAN OPERA

A limited number of tickets to Australian Opera productions during the winter season are now available. Generous concession prices make this an attractive offer: for most productions, \$28 buys an A reserve seat. Make your booking now, by contacting David Vance, Music Development Officer, Department of English, ext 3617.

I Puritani (Bellini) (with Dame Joan Sutherland)
Saturday, July 6, 1.00 p.m. — \$38.
A Masked Ball (Verdi) (new production)
Saturday, August 3, 1.00 p.m. — \$38
La Boheme (Puccini)
Friday, August 16, 7.30 p.m. — \$25
Il Trovatore (Verdi)
Saturday, September 14, 1.00 p.m. — \$25
Madame Butterfly (Puccini)
Saturday, September 28, 1.00 p.m. — \$25
Don Pasquale (Donizetti)
Saturday, October 12, 7.30 p.m. — \$25
Tosca (Puccini)
Saturday, October 19, 7.30 p.m. — \$25
Katya Kabanova (Janacek)
Saturday, October 26, 1.00 p.m. — \$25

SPECIAL OFFER

Two performances of 'The Mikado' (Gilbert and Sullivan)

Saturday, August 31, 7.30 p.m. — \$25
Saturday, November 2, 1.00 p.m. — \$14

SCARP NO. 6 LAUNCH

City Art Gallery June 11 7.30 p.m.

Readings from the magazine. Music. Light Refreshments.

A donation of \$1.50 entitles you to all this, plus a copy of SCARP No. 6.

OPERATIC ARIA COMPETITION

The Illawarra Mercury Operatic Aria Competition, presented by the Illawarra Music Club, takes place this month. The Semi-Finals will be held in the University Union Hall on Friday June 28 at 7 p.m. and the Finals on Saturday June 29 in the Wollongong Town Hall at 8 p.m.

Admission charges are \$7, concession ticket \$4 and family ticket \$14.

Bookings, University Union.

CONCERT OF 1985 — LUIGI BOCCHERINI

Arranged by Nadia Kokot and presented by the Wollongong Chapter of The Dante Alighieri Society and the Department of European Languages of The University of Wollongong.

Wollongong Town Hall (Theatre), Sunday June 16, at 8 p.m.

Program: Introduction and slides of Italy and Spain. Piano - Quintetto, Cello - Solo, Flute - Concerto, Guitar - Solo, Stabat Mater for Soprano, Mezzo-Soprano and Tenor.

Guest Artists: Prof Michael Scott, Flute; Phillip Bollinger, Guitar; John Reicard, Cello; Wollongong Singers Barbara Rixon, Gay Tagui, Michael Dioz; Sydney Chamber Group and Nadia Kokot, Piano.

Tickets available from Jurgens Yamaha - 292379 or from the Dante/Department of European Languages - 270676.

Admission \$8; Concession \$4.

Tea/coffee will be served after the concert.

Part of the proceeds will be earmarked for the Children's Medical Research Foundation.

Scholarships and Prizes

Details of the scholarships and prizes below are displayed on the Campus News Notice Board situated at 49 Northfields Avenue. Application forms are available from the Student Enquiries Office.

The Adolf Spivakovsky Scholarship for Composition of Music 1985

Dept. of Education German Academic Exchange Service Scholarships

Australian Computer Research Board Postgraduate Scholarships in Computer Science and Engineering

Australian Telecommunication and Electronics Research Board Postdoctoral Fellowship

East West Centre Honolulu Research Associates

POSTGRADUATE AWARDS

Application forms for The University of Wollongong Postgraduate Awards are now available at Student Enquiries.

The University Postgraduate Awards are tenable at the University for full-time study normally leading to a Masters degree or a Doctor of Philosophy degree.

Benefits include a stipend at the rate of \$6,500 per annum, a dependant's allowance of \$2,220 per annum for a dependant spouse, and a further \$520 per annum for each dependant child, as well as a travel allowance equivalent to a tourist airfare, where appropriate.

The award is for a maximum period of four years for a Doctor of Philosophy degree, and two years for a Masters degree.

Applications close on 31 October 1985.

Applicants should be aware that as there are few awards available each year, competition is strong.

International News

ON CHILD ABUSE AND NEGLECT

Australia has been chosen by the International Society for the Prevention of Child Abuse and Neglect (ISPCAN) as the host country for the Sixth International Congress. The Australian Planning Committee selected Sydney as the host city.

The opening and Henry Kempe Memorial Lecture will be held in the Sydney Opera House. The Scientific Programme venues are The Hilton International Hotel and the adjacent Centrepont Exhibition and Convention Centre.

The Congress is open to all who are involved in child protection. It provides an opportunity to meet and discuss problems, develop fresh ideas and initiatives, present research, broaden knowledge and share concerns about the protection of children and prevention of child abuse and neglect.

The Congress Theme is 'The Abused Child - Prevention and Protection'.

Sub-themes are: The effect of intervention on children and their careers; Intervention that works; Cultural issues in child abuse; The child before the law; Child abuse from the worker's perspective.

Further information from Dulcie Stretton Ass., 70 Glenmore Road, Paddington, N.S.W. 2021.

STUDENT EXCHANGE PROGRAMS

Various student exchange programs are offered by the Western Interstate Commission for Higher Education (WICHE).

Founded in 1953, it has 13 members and 55 staff. Member states are Alaska, Arizona, California, Colorado, Hawaii, Idaho, Montana, Nevada, New Mexico, Oregon, Utah, Washington, and Wyoming. Administers the Western Regional Education Compact, which was created to help the states develop professional and technical manpower to meet the needs of the region; to improve access to higher education for Western residents; and to improve the efficiency and effectiveness of post-secondary education in the West. Serves as a fact-finding agency and a clearinghouse for information; studies educational needs. Conducts programs in mental health and human services, nursing education, internships, health resources, economic development, and minority education. Maintains library of 15,000 volumes on higher education, health and human services, nursing, adult education and management information systems. Publications: (1) Reports (newsletter), quarterly; (2) Annual Report; (3) Graduate Education News, irregular; also publishes other reports. Convention/Meeting: semiannual.

P.O. Draw P
Boulder, CO 80302

Phone: (303) 497-0200
Dr. Phillip Sirotkin, Exec. Dir.

Job Vacancies

Details of the following positions are displayed on the Campus News Notice Board situated at 49 Northfields Avenue.

Newcastle	Vice-Chancellor Chair of Geography
New England	Lecturer (2 positions) Centre for Higher Education Studies Lecturer - Computing Science Tutor - Geography Lecturer - Physiology Lecturer - History Molecular Biologist - Biochemistry, Microbiology and Nutrition Tutor - Geology and Geophysics Half-time Tutor - Chemistry Post-Doctoral Research Fellowship - Agronomy and Soil Science
Flinders	Reader in Women's Studies
Adelaide	Research Associate, Waite Agricultural Research Institute
Wollongong	Administrative Assistant Grade 1/ Graduate Assistant Grade 1 University Secretary's Division
James Cook	Temporary Lecturers (two) Dept. of Creative and Expressive Studies, School of Education Temporary Lecturers (Theatre) Division of Performing Arts Temporary Lecturer (Music)

Sport

SQUASH CLUB

The Uni Squash Club Spring Competition starts soon. Entries close on June 24 and competition starts July 29. Entry forms on the Squash notice board near the Sports Association Office. All newcomers welcome.

RUGBY LEAGUE CLUB

Intervarsity - First round won by forfeit from Uni of New England. Second round won 7-6 against James Cook Uni (Qld.). Final lost to Uni NSW 28-8.

Four players made the NSW I.V. team to play Qld. before the test match Aust. vs NZ at Lang Park (June 18):

Neville Danawe, Leo Athanasatos, Ian Moore, Julian Hall.

Round 5 results 11/5/85

1st won 10-0 vs Mt St. Mary's
2nd won 12-0 vs Hornsby Kuringai

Round 6 results 18/5/85

1st won 24-0 vs Uni NSW
2nd lost 14-4 vs Newcastle Uni.

GOLF CHAMPIONSHIP

The University Gold Championship will be held on June 14 at "The Grange" Golf course. All departments are invited to enter a team. A team can consist of four players with the score of the best three players counting towards the Championship trophy.

Entry fee is \$5 per person which includes everything except costs on "19th". Entries taken in the Sports Association Office.

The Brain and the Bomb

A public lecture entitled 'The Brain and the Bomb' will be held at the University at 7.30 p.m. on Wednesday June 12.

The speaker will be Professor A.D. Brown from the Department of Biology.

The lecture will be held in the Main Lecture Theatre (Bldg 14).

Joint sponsorship is by the Department of Biology, University of Wollongong, and S.A.N.A. (Scientists against Nuclear Arms) Illawarra Branch.

In his lecture, Professor Brown makes the point that although the antagonism between Russia and the West is conventionally explained in political terms, the real reason is almost certainly a biological one derived from certain inherent peculiarities of Man's thought process. These peculiarities apparently served our species well during much of our evolution. With the advent of nuclear weapons, however, they have become a major discernable threat to the survival of the species. Man's ability to think rationally in some circumstances has tended to prevent recognition that, for much of the time, his behaviour is not rational but rather is determined by simpler and more fundamental processes. The implications of this will be discussed and consideration will be given to what might be done about it.

Seminars

Further details about the seminars are shown on the 'Campus News' noticeboard.

DEPARTMENT OF PSYCHOLOGY

Monday June 17 at 7.30 p.m.

Speaker: Mr. Malcom Macmillan, President of the Australian Psychological Society.

Topic: "Childhood Seduction".

Location: Northern Lounge, Union Building.

THE SEARCH FOR EXCELLENCE

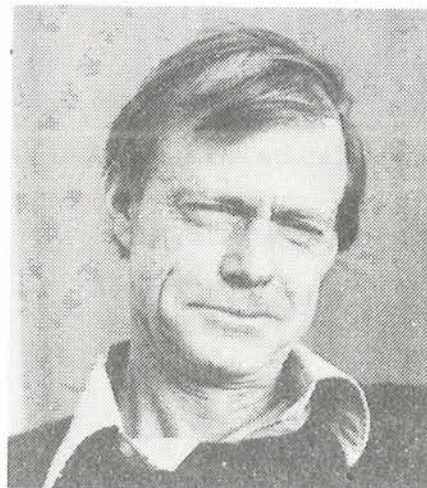
Australian Institute of Management, one-day; Tuesday August 20 or Wednesday August 21: 'The Getting of Excellence in Organisations'.

THE COMMUNICATION AUDIT WORKSHOP

Australian Institute of Management, August 6, 7 and 8; Leader: Dr Reginald Smart, Professor of Organisational Communication, California State University.



Unadvice can help promote new products, techniques, and ideas, at overseas trade fairs. Enquiries to Peter Sophios on (042) 270076.



Professor Duncan Brown

Letters

Sir,

In your issue of May 31 you were kind enough to print a notice about Professor Duncan Brown's Retirement Dinner. However, the notice omitted a request that he be given a recent photograph of those who contribute to the aboriginal scholarship fund. A separate notice about the dinner does contain a reference to a photograph but, as he was quick to point out when he saw the notice, it doesn't specify the subject of the photograph.

I would like to ask, therefore, that those who contribute to the fund should send photographs of themselves and families, if relevant, and do their utmost to resist the temptation offered by the omission of the subject of the photograph. (I should add that Duncan Brown would not be able to resist such a temptation himself, but he hopes that the serious members of the University will rise above such frivolities).

Judy Ward,
Secretary to Professor A.D. Brown,
Department of Biology.



MEMBERS GAIN THE FOLLOWING BENEFITS FROM JOINING THE FRIENDS OF THE UNIVERSITY

- Free borrowing rights at the University Library.
- Eligibility to register on the Unidvice Consultants List.
- Access to the University Union.
- Discounted rates and preferential bookings at Friends functions such as concerts, plays, sporting events, etc.
- The right to attend seminars and conferences advertised in "Campus News".
- Access to the services of Unidvice at special rates.
- Opportunity to attend Graduation Ceremonies and other ceremonial occasions at the University.
- Discounted rates at the University Bookshop.
- Use of Friends Board Room facilities.

The first year of membership is free. Thereafter \$10 per annum or \$40 life membership. Enquiries to Giles Pickford (042) 270073.

Advertisements

Advertisements in "Campus News" are repeated each week until withdrawn, OR, until new advertisements push the old ones off the end of the column, whichever occurs first.

HOUSE FOR RENT — WOMBARRA

Available from July 1 to December 31. 3 bedrooms plus large study, partly furnished and situated in a tranquil bushland setting. 5 minutes easy walk to beach and railway station. Rent negotiable. Phone 270656, 270734 or a.h. 674434.

LEVEL BLOCK WANTED

For the purpose of parking a large 33 foot camper-bus. Ring 834418.

SALE BY TENDER

The University has the following motor vehicle for sale by tender.

1 Commodore station sedan MUY-117

The University offers no guarantee on this vehicle. Terms of sale are cash or bank cheque. For inspection phone Mr. N. Lynch (270936).

Tenders close 11.30 a.m. on 17th June, 1985.

TYPING SERVICE

At the Community Administrative Bureau we offer a fast, efficient typing or word processing service for your assignments, theses or lecture notes. Our equipment consists of modern electronic typewriters and an Apple II Computer is available for work requiring word processing.

We are open from 9 a.m. to 5 p.m. Monday to Friday.

Costs -

Typing, word processing \$1.50 per page (500 words)
Book keeping \$10.00 per hour or \$7.00 per hour if unemployed.

Data Base Entry - 40c per entry which includes data entry, proof reading, hard copy and first run of sticky labels (if required).

Offset Printing - 1,000 single sided \$30.00; 1,000 double sided \$43.00; Prices for smaller runs available upon application.

Phone Jacqueline Ramm, Co-ordinator on 272611.

FREE RANGE CORN FED CHICKEN

Ring Bob Hoole on 284724 for more information on free range corn fed chicken at \$3.90 per kg.

FOR SALE

Elect. stove, Chef Consul 4 yrs. old, griller needs new switch, otherwise in excellent condition. \$180.00 o.n.o. Contact Jenel Ashton on ext. 3902.

FOR SALE: ELECTRONIC LEARNING AID

Are you disappointed or concerned about your child's performance at school last year?

Have you been thinking of buying a computer for your children?

Before you do anything contact EDUTECH who may be able to help you with their new powerful Electronic Learning Aid, designed to help children learn the basics in maths and spelling and much more.

See noticeboards around the campus.

For further information ring Lyndall on 563174.

FOR SALE

1979 Datsun 200B, low klms, good condition. Reg. March '86. \$3,000. Phone 296597.

Discount Quiz

► What card gives you more discounts than any other card?

► What card gives you over 2000 discounts around Australia?

No! It's not American Express or Bankcard. It's the **International Student Identity Card** (for full-time students who can maximise discounts with this card) and the **Australian Student Identity Card** (for all students but this card does not get *all* discounts listed in the NSDS Directory). The **National Student Discount Scheme Directory** points you in the right direction.

Get your card and start saving

See your local student union for full details.

YOUR CARD TO COINLESS COPYING



IS COMING SOON!