



UNIVERSITY  
OF WOLLONGONG  
AUSTRALIA

University of Wollongong  
Research Online

---

Australian Institute for Innovative Materials - Papers

Australian Institute for Innovative Materials

---

2010

# Phase formation and magnetotransport of alkali metal doped $\text{Na}_{0.75}\text{CoO}_2$ thermoelectric oxide

Priyanka Jood

*University of Wollongong*, pj991@uow.edu.au

Germanas Peleckis

*University of Wollongong*, peleckis@uow.edu.au

Xiaolin Wang

*University of Wollongong*, xiaolin@uow.edu.au

S X. Dou

*University of Wollongong*, shi@uow.edu.au

H Yamauchi

*Helsinki University of Technology Finland*

*See next page for additional authors*

---

## Publication Details

Jood, P, Peleckis, G, Wang, P, Dou, SX, Yamauchi, H, & Karppinen, M (2010), Phase formation and magnetotransport of alkali metal doped  $\text{Na}_{0.75}\text{CoO}_2$  thermoelectric oxide, *Journal of Applied Physics*, 107(9), pp. 1-3.

Research Online is the open access institutional repository for the University of Wollongong. For further information contact the UOW Library:  
research-pubs@uow.edu.au

---

# Phase formation and magnetotransport of alkali metal doped Na<sub>0.75</sub>CoO<sub>2</sub> thermoelectric oxide

## Abstract

Synthesis and characterization of bulk Na<sub>x</sub>CoO<sub>2</sub> samples substituted by K and Rb is reported. Phase formation studies revealed a narrow stable region for Na-alkali metal-Co system. Whisker and platelike single crystalline structures have been found to form on the surface of the pellets in case of K doping. All samples were metallic and no characteristic anomaly in R-T curves was observed for Rb doped sample. Magnetoresistance measured has a pronounced positive response only for K-doped and pure Na<sub>x</sub>CoO<sub>2</sub> phases, reaching 11% and 7% at 5 K temperature, respectively.

## Keywords

Phase, formation, magnetotransport, alkali, metal, doped, Na<sub>0.75</sub>CoO<sub>2</sub>, thermoelectric, oxide

## Disciplines

Engineering | Physical Sciences and Mathematics

## Publication Details

Jood, P, Peleckis, G, Wang, P, Dou, SX, Yamauchi, H, & Karppinen, M (2010), Phase formation and magnetotransport of alkali metal doped Na<sub>0.75</sub>CoO<sub>2</sub> thermoelectric oxide, *Journal of Applied Physics*, 107(9), pp. 1-3.

## Authors

Priyanka Jood, Germanas Peleckis, Xiaolin Wang, S X. Dou, H Yamauchi, and M Karppinen

## Phase formation and magnetotransport of alkali metal doped $\text{Na}_{0.75}\text{CoO}_2$ thermoelectric oxide

P. Jood,<sup>1</sup> G. Peleckis,<sup>1,a)</sup> X. L. Wang,<sup>1</sup> S. X. Dou,<sup>1</sup> H. Yamauchi,<sup>2</sup> and M. Karppinen<sup>2</sup>

<sup>1</sup>*Institute for Superconducting and Electronic Materials, University of Wollongong, Wollongong, New South Wales 2519, Australia*

<sup>2</sup>*Laboratory of Inorganic and Analytical Chemistry, Helsinki University of Technology, FIN-02015, Finland*

(Presented 19 January 2010; received 30 October 2009; accepted 30 November 2009; published online 21 April 2010)

Synthesis and characterization of bulk  $\text{Na}_x\text{CoO}_2$  samples substituted by K and Rb is reported. Phase formation studies revealed a narrow stable region for Na-alkali metal-Co system. Whisker and platelike single crystalline structures have been found to form on the surface of the pellets in case of K doping. All samples were metallic and no characteristic anomaly in R-T curves was observed for Rb doped sample. Magnetoresistance measured has a pronounced positive response only for K-doped and pure  $\text{Na}_x\text{CoO}_2$  phases, reaching 11% and 7% at 5 K temperature, respectively. © 2010 American Institute of Physics. [doi:10.1063/1.3365491]

In recent years constantly growing concern over decreasing amount of primary energy sources has prompted widespread research on development of alternative techniques and materials for power generation. Waste heat from power plants, factories, or automobiles equals to 70% of the total primary energy, but it is difficult to use as its sources are highly dispersed and small in size. The only effective method of overcoming these problems by converting heat energy directly into electrical energy is thermoelectric (TE) power generation. Good TE material should possess high conversion efficiency, be built out of nonvolatile and nontoxic elements, highly abundant and most important chemically stable at temperatures as high as 1000 K in air. Thus, oxide based TE materials are most promising candidates for TE applications due to their stability at high temperatures in air.

After Terasaki *et al.*<sup>1</sup> have reported that  $\text{Na}_x\text{CoO}_2$  compound exhibits simultaneously high TE power and low resistivity ( $S \approx 100 \mu\text{V}/\text{K}$  and  $\rho \approx 200 \mu\Omega \text{ cm}$  at 300 K), many researchers put a lot of effort to develop new Co-based oxides that would exhibit similar or even better TE properties. Among many Co-based compounds three types of layered cobalt oxides have attracted the highest attention:  $\text{Na}_x\text{CoO}_2$ ,  $\text{Ca}_3\text{Co}_4\text{O}_9$ ,<sup>2</sup>  $\text{Bi}_2\text{Sr}_3\text{Co}_2\text{O}_9$ .<sup>3</sup> In  $\text{Na}_x\text{CoO}_2$  TE oxide the sodium layers are sandwiched between  $\text{CoO}_2$  blocks and these are stacked along the *c* axis.  $\text{CoO}_2$  layers are responsible for electrical conductivity and Seebeck coefficient while the Na layers are insulating and determine thermal conductivity of the oxide. Fouassier *et al.*<sup>4</sup> reported that a large amount of vacancies can easily be introduced into the sodium layer, giving a possibility for a high Na nonstoichiometry. It was also shown that highly sodium deficient and water intercalated  $\text{Na}_x\text{CoO}_{2-y}\text{H}_2\text{O}$  is superconducting at low temperatures.<sup>5</sup> Moreover, Balsys *et al.*<sup>6</sup> reported that due to the peculiar layered structure, Na ions can freely migrate in between the oxygen layers. Such migration of Na ions might

be responsible for structural phase transitions close to room temperature which were described by Tojo *et al.*<sup>7</sup> They have found existence of three first order transitions at 288.7, 296.3, and 302.1 K. This result is supported by Motohashi *et al.*,<sup>8</sup> who showed anomalous behavior in electrical resistivity curves for  $\text{Na}_x\text{CoO}_2$  polycrystalline samples.

As being a transition metal oxide,  $\text{Na}_x\text{CoO}_2$  is very attractive for chemical substitution studies. Both cation sites, Na and Co, can be substituted by various elements. Kawata *et al.*<sup>9</sup> showed enhanced TE properties for Ca-substituted samples. On the other hand Sr does not go into Na site, but forms an individual compound  $\text{Sr}_x\text{CoO}_2$ .<sup>10</sup> Other studies showed that Mn, Ru, and Rh act as strong scatters to increase electrical resistivity rapidly, while Cu, Zn, and Pd substitution does not alter the electric conduction.<sup>11,12</sup> In this article we present synthesis and characterization of alkali metal doped  $\text{Na}_x\text{R}_y\text{CoO}_2$  ( $R=\text{K},\text{Rb}$ ) polycrystalline samples. The introduction of bigger alkali metal ions might decrease Na migration in the layer and thus improve transport properties of the material.

All samples were prepared applying “rapid heat-up” technique.<sup>8</sup> Phase purity was checked using x-ray powder diffraction (MAC Science, MXP18VAHF,  $\text{Cu K}\alpha_1$  radiation). Phase formation was studied by means of thermogravimetric (TG) analysis (Perkin Elmer, Pyris 1). For full synthesis simulation, a 5–30 mg amount of sample was put into the thermobalance. In order to avoid fast alkali metal evaporation, the heating rate of  $2^\circ\text{C}/\text{min}$  was adopted. The morphology and microstructure of the samples was investigated by scanning electron microscopy (SEM) (Hitachi, S-4500). Chemical composition of the samples was determined using inductively coupled plasma atomic emission spectrometer (ICP-AES) (Seiko, SPS1500VR). Transport properties were analyzed by physical property measurement system (Quantum Design) in a temperature range of 5–350 K. For magnetoresistance studies the applied field was varied from 0 to 7 T.

<sup>a)</sup>Author to whom correspondence should be addressed. Electronic mail: peleckis@uow.edu.au.

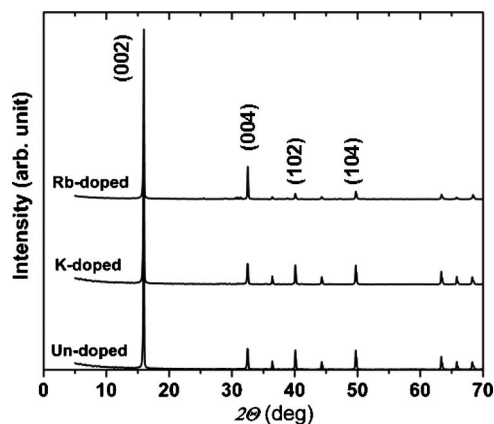


FIG. 1. X-ray diffraction patterns for sintered  $\text{Na}_x\text{R}_y\text{CoO}_2$  ( $\text{R}=\text{K},\text{Rb}$ ) samples.

Figure 1 shows x-ray diffraction patterns of undoped and K/Rb doped  $\text{Na}_x\text{CoO}_2$  samples after sintering. The samples are of single phase corresponding to that of hexagonal  $\gamma\text{-Na}_{0.75}\text{CoO}_2$  oxide. The 002 and 004 peaks at  $2\theta=16.2^\circ$  and  $33.4^\circ$  are much higher in intensity for the Rb doped sample as opposed to other ones indicating a more pronounced  $c$  axis orientation. Lattice parameters calculated from the x-ray diffraction patterns revealed that introduction of bigger alkali ion in the system caused elongation of the lattice parameter  $c$ , i.e.,  $c_{(\text{un-doped})}=10.912 \text{ \AA}$  and  $c_{(\text{Rb-doped})}=10.946 \text{ \AA}$ , respectively.

Figures 2(a) and 2(b) show SEM micrographs of  $\text{Na}_{0.75}\text{Rb}_{0.25}\text{CoO}_2$  calcined powders and sintered pellets, respectively. As we can see, the sample morphology has very distinctive differences. For calcined powders the particles are embedded in some sort of melt and the shape of the particles is somewhat circular. In contrary, the particles in the sintered sample [Fig. 2(b)] are well formed and separated, have clear signs of layered structure, and are elongated in shape. Some residue of melting or sublimation can be seen on the surface of the crystallites. The average particle size is about  $20 \mu\text{m}$ . Furthermore, it was found that for K-doped samples, single crystalline formations have been observed [Fig. 2(c)]. Two kinds of distinctive products were formed: whisker-type and petal-like crystals [as indicated in Fig. 2(c)]. The formation of the product was found to be highly dependant on K amount in the samples and sample sintering temperature, i.e., higher K content and higher temperatures caused larger amount of petal-like crystals to be formed. Detailed phase formation analysis and TE properties of whisker type crystals is reported elsewhere.<sup>13</sup> We were unable to measure electric properties of petal like crystals as they were very brittle and thin.

To establish and understand the proper synthesis procedure we have performed TG simulation of synthesis procedure. Figure 3 shows TG curve for the simulation of solid-state reaction, when Rb is doped into  $\text{Na}_x\text{CoO}_2$  sample. The TG curve has distinctive difference as compared to published data for Na-pure samples.<sup>8</sup> At around  $600\text{--}700^\circ\text{C}$  we have stable triple cation system, i.e., Na–Rb–Co. However, we can see a drop in weight at temperatures above  $760^\circ\text{C}$ . This can be attributed to the evaporation of Rb from the samples. At

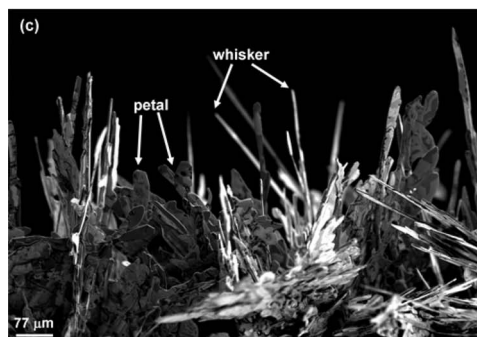
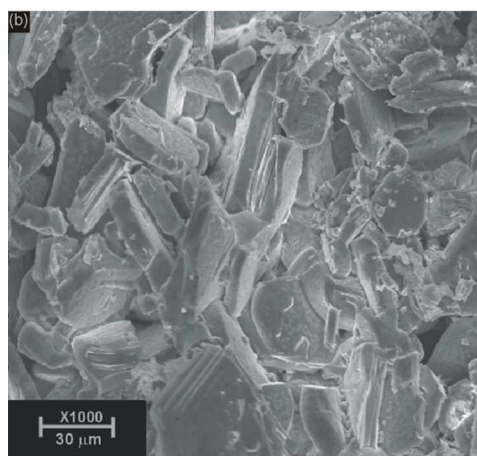
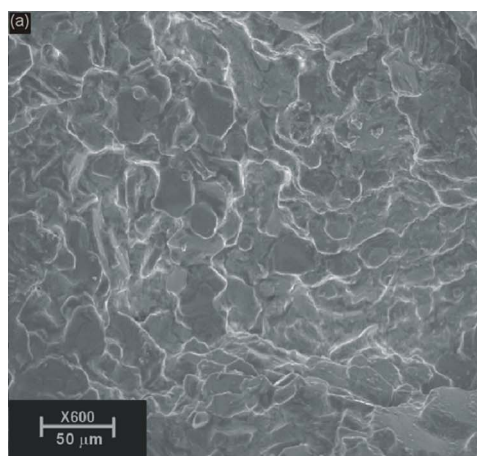


FIG. 2. (Color online) SEM pictures of (a) calcined, (b) sintered  $\text{Na}_{0.75}\text{Rb}_{0.25}\text{CoO}_2$  samples, and (c) single crystalline products on the surface of the pellets for K-doped samples.

temperature of  $830^\circ\text{C}$  almost half of Rb content is already lost and is completely vanished at  $860^\circ\text{C}$ . This is in contrast to K-doped samples, where stable Na–K–Co temperature region is broader, i.e.,  $650\text{--}830^\circ\text{C}$ .<sup>13</sup> The observed Rb evaporation is supported by ICP-AES results, which showed that  $\text{Na}_{0.75}\text{Rb}_{0.25}\text{CoO}_2$  precursor powders [region between steps (2) and (3)] after sintering [after step (3)] were in fact  $\text{Na}_{0.73}\text{Rb}_{0.02}\text{CoO}_2$ .

Electrical properties measured revealed that all samples are metallic, with lowest electrical resistivity ( $\rho$ ) at 300 K for Rb substituted  $\text{Na}_{0.75}\text{CoO}_2$ , i.e.,  $\rho=0.9 \text{ m}\Omega \text{ cm}$ . The Rb doped sample does not show characteristic anomaly in the electrical resistivity curve at room temperature which is in contrast to undoped<sup>8</sup>  $\text{Na}_{0.75}\text{CoO}_2$ . Furthermore, we have in-

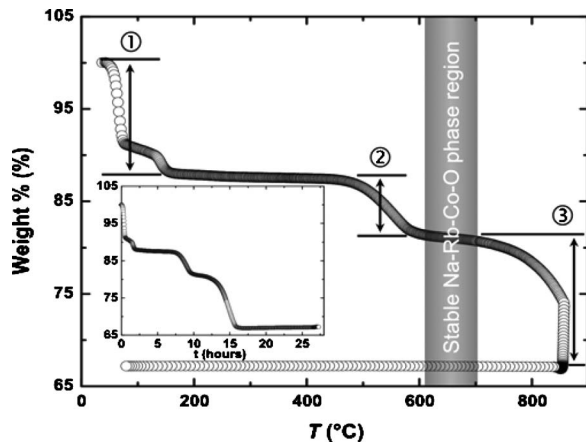


FIG. 3. TG curve of a raw material powder mixture (Na:Rb:Co = 0.75:0.25:1) upon heating in  $O_2$  gas. (① Evaporation of  $H_2O$ ; ② decarbonation process; and ③ depletion of Rb.) Inset shows the same data with respect to time.

investigated magnetotransport properties of our samples at 5 K [Fig. 4(b)]. The undoped sample shows positive magnetoresistance (MR) effect reaching 11% at 5 K. In the case of K doping this MR response is suppressed to 7%. Lastly, for Rb doped sample the MR effect is positive and negative, yet quite small, i.e.,  $\sim 4\%$ . The origin of such suppression of the

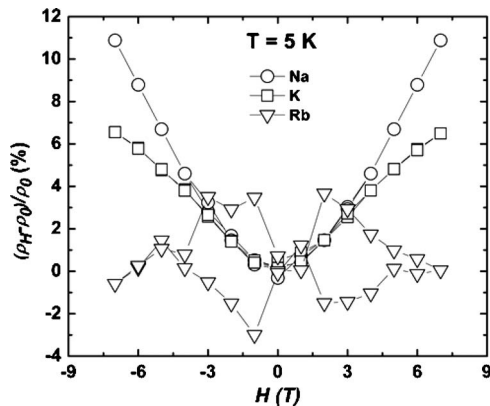


FIG. 4. MR for pure and alkali metal doped  $Na_{0.75}CoO_2$  measured at 5 K.

MR effect might be related to the structural reordering and elongation of lattice parameter  $c$ . It is possible that due to the longer distances between  $CoO_2$  layers, the magnetic ordering in the material is lower than that for undoped compound.

In summary, K and Rb doped samples of  $Na_{0.75}CoO_2$  TE oxide were prepared via “rapid heat-up” synthesis technique. Single crystalline structures were observed on the surface of the pellets for K-doped samples. TG analysis showed depletion of doped alkali ion during sintering procedure. All samples were metallic with positive MR effect for undoped and K-doped samples reaching 11% and 7% at 5 K, respectively. In contrast, Rb doped sample showed weakly pronounced MR features which might be caused by significant structural/microstructural changes.

## ACKNOWLEDGMENTS

G.P. thanks the Australian Research Council for support under Discovery Grant No. DP0 879 714. P.J. thanks the University of Wollongong for providing matching scholarship for her Ph.D. studies.

- <sup>1</sup>I. Terasaki, Y. Sasago, and K. Uchinokura, *Phys. Rev. B* **56**, R12685 (1997).
- <sup>2</sup>A. C. Masset, C. Michel, A. Magnan, M. Hevein, O. Oulemonde, F. Studier, and B. Raveau, *Phys. Rev. B* **62**, 166 (2000).
- <sup>3</sup>J. M. Tarascon, R. Rajesh, P. Darboux, M. S. Hedge, G. W. Hull, L. H. Greene, M. Giroux, Y. Lesage, W. R. McKinnon, J. V. Waszczak, and L. F. Schneemeyer, *Solid State Commun.* **71**, 663 (1989).
- <sup>4</sup>C. Fouassier, G. Matejka, J.-M. Reau, and P. Hagenmuller, *J. Solid State Chem.* **6**, 532 (1973).
- <sup>5</sup>K. Takada, H. Sakurai, E. Takayama-Muromachi, F. Izumi, R. A. Dilanian, and T. Sasaki, *Nature (London)* **422**, 53 (2003).
- <sup>6</sup>R. J. Balsys and R. L. Davis, *Solid State Ionics* **93**, 279 (1997).
- <sup>7</sup>T. Tojo, H. Kawaji, T. Atake, Y. Yamamura, M. Hashida, and T. Tsuji, *Phys. Rev. B* **65**, 052105 (2002).
- <sup>8</sup>T. Motohashi, E. Naujalis, R. Ueda, K. Isawa, M. Karppinen, and H. Yamauchi, *Appl. Phys. Lett.* **79**, 1480 (2001).
- <sup>9</sup>T. Kawata, Y. Iguchi, T. Itoh, K. Takahara, and I. Terasaki, *Phys. Rev. B* **60**, 10584 (1999).
- <sup>10</sup>R. Ishikawa, Y. Ono, Y. Miyazaki, and T. Kajitani, *Jpn. J. Appl. Phys., Part 2* **41**, L337 (2002).
- <sup>11</sup>R. Kitawaki and I. Terasaki, *J. Phys.: Condens. Matter* **14**, 12495 (2002).
- <sup>12</sup>S. Li, R. Funahashi, I. Matsubara, and S. Sodeoka, *Mater. Res. Bull.* **35**, 2371 (2000).
- <sup>13</sup>G. Peleckis, M. Karppinen, and H. Yamauchi, *Appl. Phys. Lett.* **83**, 5416 (2003).