



THE UNIVERSITY OF WOLLONGONG

CAMPUS NEWS

LAST ISSUE FOR 1984
FRIDAY 30.11.84

FIRST ISSUE FOR 1985
FRIDAY 8.2.85

A WEEKLY INFORMATION SHEET

23 NOVEMBER, 1984

Deadline for copy 12 noon Monday

Distributed each Friday.

Editor: Giles Pickford, tel. (042) 270073

THE SHENYANG CONNECTION

A group of senior Chinese academics from the Northeast University of Technology, Shenyang, is coming to the University of Wollongong under an exchange agreement signed recently in China.

The group comprises: Head: Professor Lu Zhouwu, President; Members: Professor Du Hegui; Associate Professor Wang Yongjia, Director of Computer Centre; Lao Zhongkui, Vice-Director, International Academic Exchange Centre; Wang Yongsheng, Official from Ministry of Metallurgy.

They will be in Australia from 27 November to 20 December, during which time they will make extensive inspections of local heavy industry and acquaint themselves with research developments in engineering and metallurgy. The group will be based in Wollongong but will leave it for approximately two weeks to meet with other top academics and industrialists in Canberra, Melbourne, Newcastle and Whyalla.

During their stay, they will attend a State Banquet at Parliament House and a Civic Reception at Glenniffer Brae in Wollongong, hosted by the Lord Mayor. The

Vice-Chancellor and Deputy Vice-Chancellor will entertain them at an official dinner given by the University of Wollongong, and A.I. & S. General Manager, John Clark, will host a dinner for them with other executives from the Steelworks.

Media coverage of the delegation's tour will be extensive. In addition to creating much interest locally, the Shenyang group will be interviewed by the press interstate. B.H.P., which is conducting the visits to Whyalla and Newcastle, will naturally feature the news in its own in-house publications.

As well as being of academic interest, the visit of the Shenyang group has significant future benefit to Australia in the forging of stronger trade links with China.

Ansett are the official carriers of the group for interstate travel. The chairman of the Membership Committee of the Friends, Ald. Frank Arkell M.P. will be recommending Ansett for Life Membership of the Friends, in recognition for their many years of service to the University.

INFORMATION OFFICERS CONFERENCE

The Information Officers of Universities in New South Wales and the A.C.T. will hold their regional conference this year at the University of Wollongong on Wollongong's 150th Birthday - 26 November 1984.

Fourteen delegates from all universities in New South Wales and the A.C.T. and one delegate from Monash University will attend the day long conference.

Agenda items include:

1. Meetings between Vice-Chancellors and Senior Media Executives.
2. University Research Week.
3. National Meetings of Information Services Staff/Proposals for a National Professional Body.
4. List of Key Media Personnel in Sydney.
5. Relationships with the Australian Vice-Chancellors' Committee.

6. Survey of Public Attitudes to Universities.
7. Assessment of Special Press Supplements.

The Vice-Chancellor of the University will host a luncheon for the delegates which will be attended by Committee Chairmen from the Friends of the University.

CHIPMAN HONOURED

Professor Lauchlan Chipman, Professor of Philosophy at the University of Wollongong, has been honoured "for outstanding service to the free society" by the Australian Adam Smith Club. The award will be given at a dinner on 30 November by Mr. John Hyde, the winner of the 1983 Adam Smith Award.

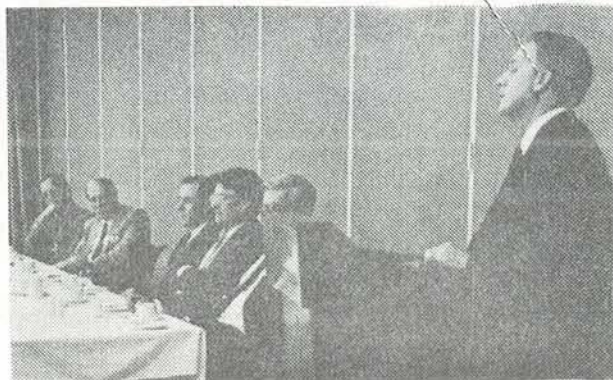
Professor Chipman's address is entitled "The Sell Out of Freedom - the New Class on the March".

ATICCA AN OUTSTANDING SUCCESS

The recent Mini ATICCA Conference held at the Northbeach International was an outstanding success according to the Chairman, Mr. Frank Lees.

So much so that ATICCA has decided to hold a regional meeting each year, outside the capital cities of Sydney, Melbourne and Canberra.

The Deputy Prime Minister, the Hon. Lionel Bowen M.P. is shown addressing the Conference luncheon. Guests at the head table, from left to right, include Professor Ron Johnston, Mr. Frank Lees President of ATICCA, the Vice-Chancellor, Professor Ken McKinnon, the Hon. Stewart West, Minister for Immigration and Ethnic Affairs and Mr. Don Manser, Deputy President of ATICCA.



Members of the University are invited to forward submissions and comments to Mrs. L. Woodley, Planning and Development, by Monday, 26th November, 1984.

General Notices

REVIEW OF DEPARTMENT OF BIOLOGY

A formal review of the Department of Biology has been initiated following the announcement of the retirement date of Professor A.D. Brown.

The Committee established to review the Department is composed as follows:

Deputy Vice-Chancellor (Chairperson)
Prof. Derek Anderson, University of N.S.W.
Prof. Frank Gibson, Australian National University
Prof. R.B. Leal, Deputy Chairperson, Academic Senate
Mr. Jim Dombroski, Council Member, University of Wollongong.

The Review Committee is required to evaluate all aspects of the Department including its facilities and curricula. Members of the University are invited to forward submissions and comments to Ms. J. Sullivan, Planning and Development, by Friday 30th November, 1984.

REVIEW OF THE DEPARTMENT OF MATHEMATICS

A preliminary review of the Department of Mathematics has been initiated, a five year period having elapsed since the last review.

The Committee established to review the Department is composed as follows:

Deputy Vice-Chancellor (Chairman)
Professor R.B. Potts, Department of Applied Mathematics, University of Adelaide.
Professor C.C. Heyde, Department of Statistics, University of Melbourne.

(Under the Procedures for a Preliminary Review, only the Deputy Vice-Chancellor as Chairperson and an external assessor are required to comprise a Review Committee).

The Review Committee is required to evaluate major aspects of the Department including its facilities, curricula and future development.

KIDS' UNI TO OPEN IN SUMMER

The University of Wollongong Multi-purpose Childcare Centre caters for 50 children from 0 - 12 years.

Kids' Uni is now open all year round including Summer Session. Currently there are vacancies for the children of staff members for short term bookings during the Summer and for bookings which will continue in the 1985 academic year.

Staff and students who are interested in using the centre should contact the Director, Jillian Trezise, extension 3072 or call in at the centre to obtain an application form.

COURSES IN DEVELOPMENT

The Australian Development Assistance Bureau advises the Minister for Foreign Affairs on matters relating to aid for developing countries. It administers the provision of Australian development assistance programs to a wide range of developing countries and their related areas; Asian Studies and Pacific Studies.

The Bureau is currently undertaking a program of upgrading resources. This program features new initiatives in the professional development of staff.

To assist the Bureau in the planning of its professional development program readers can help in:

1. including the Bureau on mailing lists for distribution of information on courses, seminars and conferences relating to development, development and agricultural economies, international development, development program management, and their related areas; Asian Studies and Pacific Studies;
2. sending the Bureau in advance, to allow for overseas mail, necessary joining instructions for such activities;
3. indicating the details and availability of relevant resource materials (e.g. tape-slide packages, video programs, computer-assisted learning packages).

Please address correspondence for the attention of the Personnel Development Officer at Australian Development Assistance Bureau, G.P.O. Box 887, Canberra, 2601.

OPEN DAY/EXPO

A report on the 1984 Open Day/Expo, and proposals for 1985, have been prepared by the Open Day Committee, for the Academic Senate.

An extract is shown below:

The attendance at Open Day/Expo was estimated at 25% more than 1983. It is without doubt the most well attended Open Day in Australia; and it is the cheapest, having cost only \$4,600 in 1983 and \$5,000 in 1984. The 1984 budget was \$3,400 for brochure production and \$1,600 for signwriting.

Support from the University was excellent with 20 academic departments and schools participating as well as various administrative and academic service units.

Publicity for Open Day/Expo was many times more extensive than in 1983. It extended into Southern Sydney, the Highlands and Nowra. The "Mercury" produced a four page supplement on the Friday before the event and ran one and a half pages of follow-up on the Monday following.

Organisers noted that the crowd was more willing to investigate the University exhibits and activities than in 1983. This was probably due to a combination of better signposting and the breaking down of barriers in the public's mind through the process of familiarity combined with curiosity. Particularly pleasing were the much larger crowds visiting exhibits in the Institute area.

The University's policy of combining a trade fair with Open Day is therefore clearly correct. A very large non-university-educated population is being conditioned to accept, and be curious about, what we have to offer.

The Recurrent Resources Committee's investigation of Departmental needs for financial support for Open Day has yet to be completed.

The Chairman and Secretary have asked each Faculty for a session on Open Day/Expo to be included on the agenda so that suggestions for 1985 can be canvassed.

The Committee has made the following recommendations for 1985.

1. That the following recurrent budget be approved for the 1985 Open Day:

Brochure Production	\$4,000
Signwriting	\$2,000
Garbage Bin Hire and Collector's Wages	580
	\$6,580

2. That the Recurrent Resources Committee be requested to complete its investigation into Departmental needs for financial support for Open Day. The Open Day Committee strongly supports the Departments in this regard. Without financial assistance some Departments may feel obliged to withdraw from future involvement.

3. That the following capital works be undertaken and completed in time for the 1985 Open Day:

- (a) construction of steps up the steep embankment between the rugby field and the Gymnasium;
- (b) erection of large Director Boards in the following locations -
 - * between Union and Union Car Park

- * between Library and Pentagon
- * Institute entrance.

The first of these is essential and the others desirable;

- (c) erection of more garbage bins, especially around the Union and Sports Pavilion and Institute Canteen;
- (d) erection of more building identification signs, especially around the following:
 - Social Sciences Building
 - Skylab
 - Creative Arts
 - Pentagon.

4. That the Open Day Committee be augmented by the following additional members:
 - a representative from Buildings and Grounds
 - the Landscape Supervisor.
5. That in 1985 Open Day and Expo both be held at the same time - on 19 and 20 October, 1985.

Enquiries or comments can be directed to the Chairman, Professor Leon Kane-Maguire, ext. 3509.

BRITISH COUNCIL NEWSLETTER

A copy of the November edition of the British Council Newsletter can be obtained from the Editor (ext. 3073).

THE UNIVERSITY GAZETTE

The November issue of the University 'Gazette' is the last for 1984.

Five issues - in March, May, July, September and November - will be published in 1985.

Deadline for each issue is the 20th of the month prior to publication.

Copy should be addressed to the Editor, George Wilson, in the Administration Building of the University.

STATE SUPERANNUATION BOARD ELECTIONS '85

The State Superannuation Board advises that elections for two Board member positions, one full-time, the other part-time, will be held early next year. The date for the elections will be set by the Minister for Industrial Relations shortly and the Electoral Commissioner for New South Wales will make formal announcements, including calling for nominations.

In order to be eligible for nomination as the full-time elected member a person must be a contributor to the State Superannuation Fund and a member of a registered industrial union. A person must be either a Fund contributor or pensioner to be eligible for nomination as the part-time elected member. Details of forms of nomination and other requirements will be announced by the Electoral Commissioner.

The following general information is provided concerning the duties and responsibilities of the Board's Elected Members.

The State Superannuation Board consists of five members. Each of the two elected members hold office for a term of 3 years and at the end of this period he/she is eligible for re-election. The terms of office of the current elected members expire on 30 June 1985.

The full-time elected member is a full-time executive officer of the Board. The Superannuation Act, 1916, provides that upon assumption of office, the full-time elected member is deemed to be an employee of the Government of New South Wales and ceases to be an employee in any other capacity.

The Board normally meets once each week, with meetings usually of one-half day duration. Special meetings are held when necessary. The full-time elected member is required to attend these and various other meetings. His/her duties relating to the day to day administration of the Board's office are determined by the President and have regard to his/her qualifications and experience.

The Act provides that when the full-time elected member ceases to hold office by reason of expiry of term or resignation and has not reached normal retirement age, he/she is entitled to be re-appointed to some position as an employee in the service of his/her previous employer of similar classification and salary as that held before assumption of office. The full-time elected member currently receives a salary of \$50,305 (with an annual expense allowance of \$1,013).

The part-time elected member is required to attend Board meetings and currently receives an annual fee of \$2,675.

When the Minister for Industrial Relations has determined the election date the Electoral Commissioner for New South Wales will insert appropriate announcements in the Government Gazette and daily newspapers. This is expected to occur in November or December, 1984.

UNIVERSITY OF WOLLONGONG CLUB

There will be no lunch on Tuesdays at the Club until further notice. Lunch will still be available on Thursdays between 12.00 p.m. and 2.00 p.m. until further notice. The return of surveys was very disappointing; thanks to those members who took the trouble to fill them in and return same. Don't forget the Club Christmas Party on Friday night, 14 December at 7.00 p.m. Cost \$15.00 per head payable in advance to Ted Ross by 7 December. A reminder to prospective members - as from 1 January, 1985 there will be a joining fee of \$20.00. Membership forms are available from the secretary, Flora Hutchison, Administration.

CHILDRENS' CHRISTMAS TREE COMMITTEE

Melbourne Cup Draw Winners:

1st - Black Knight - M. Opacic, Wollongong. \$100.00
2nd - Chagemar - A. Dean, Farmborough Heights. \$50.00
3rd - Mapperley Heights - T. Ross, Administration. \$25.00
Last - Legana - E. McCloy, Wollongong. \$5.00

Our thanks to those who helped sell the tickets and to those who bought tickets.

Childrens' Christmas Party:

The Childrens' Christmas Party will be held on Saturday 1st December, commencing 1.00 p.m. at the Institute Canteen. We urgently require donations for our Christmas Hamper, which will be drawn at the Christmas Party. Please leave your donations with Flora, Administration, or Lionel, Printery. Tickets are now on sale for the Hamper - 20 cents each or 6 for \$1.00

friends

Campus Community Interface

UNIVERSITY CHRISTMAS PARTY SUPPER DANCE

featuring

Belmore Basin Jazz Band

Organised by the Friends of the University

Union Hall, Friday 7th December

Start 7 p.m.

Meal 8 p.m.

Dancing till midnight — Bar facilities — \$10.00

Book now —
288074 Peter McNamara or 297833 Union

KEIRA GREEN CORRIDOR PROJECT

The next meeting of the Keira Green Corridor Project Committee will be held on Wednesday, 6 March, 1985 at 12.30 p.m. in the Reception Room, Town Hall, Wollongong, where a light luncheon will be served.

HAYDN'S "CREATION"

Tapes now available from Friends Office
(042) 270073

\$15 - two cassettes

UNI
ADVICE

PROPOSED MARINA — BOOLLWARRA PLACE, SHELLHARBOUR

Uniadvise wishes to issue the following statement concerning the proposal to construct a Marina in the Shellharbour Municipality. The statement is issued to correct any misunderstanding which may have arisen concerning Uniadvise's and the University of Wollongong's role in this matter.

On 25 May 1982 Shellharbour Council, under the authority of the Town Clerk, requested Uniadvise (the University's consulting arm) to undertake an analysis of the wetlands and materials therein for a proposed Marina development. The study was to include an analysis of sediments and bedrock, profile of beach sands, survey of bird life and a chemical analysis of leachate of the site.

This report was completed and forwarded to the Shellharbour Town Clerk on 14 November 1983. Uniadvise was not asked to report on the choice of the site, or

design or construction details. However, the report did address itself, as the result of the findings, to the need for further studies to be conducted including, specifically, engineering studies relating to the entrance. The report was commissioned only as a general assessment of the matters considered and it recommended more detailed examination of the site should be considered by the Council.

Research Grants

CSIRO COLLABORATIVE PROGRAM IN INFORMATION TECHNOLOGY

As part of its program in information technology CSIRO intends to provide grants to support collaborative research and development work in this field between CSIRO Divisions and partners in Australian industry, universities or other tertiary educational institutions. These grants will be made on a non-continuing basis in 1984/85 to enable the formulation of more detailed proposals for funding on a longer term basis from 1985/86. Up to \$400,000 will be available in 1984/85.

ATTENTION BECKETT SCHOLARS

At the invitation of Stanley Gontarski and John Calder, one issue of the 'Journal of Beckett Studies' in the near future (probably No. 13) will be edited by James Acheson (University of Canterbury, Christchurch, N.Z.) and Colin Duckworth (University of Melbourne, Australia). The two Guest Editors wish to include articles and reviews by as many Australasian Beckett scholars as possible, and would like to receive contributions for consideration by no later than 1 December 1985.

Drama and theatre-related items should be sent to Colin Duckworth, Department of French, University of Melbourne, Parkville, Victoria 3052, Australia; items concerned with Beckett's fiction, poetry or criticism should be sent to James Acheson, Department of English, University of Canterbury, Christchurch 4, New Zealand.

BILATERAL SCIENCE & TECHNOLOGY AGREEMENTS

Department of Science and Technology 1986 Program

Proposals for international scientific and technological collaboration due to commence in 1986 are sought under the various bilateral science and technology agreements.

The agreements, which are administered on the Australian side by the Department of Science and Technology (DST), are between Australia and Japan, USA, Mexico, the Federal Republic of Germany, India and the People's Republic of China.

Limited funding is available to facilitate interaction between agencies in those countries and Australia. Funding support is normally limited to economy return air fares and support for living costs for the collaborating scientists and technologists.

DST funds are available to support seminars and workshops which have been developed from the outset as proposed agreement activities or short-term visits (up to 6 months) for co-operative projects. It is anticipated

that the primary funds for collaboration will be provided by the co-operating agencies themselves. Support is not available for attendance at general international seminars or conferences.

Selection of programs will be made with the advice of an Overview Committee comprising:

- . Dr. W.J. McG. Tegart FTS
- . Dr. N.K. Boardman FRS FAA
- . Professor W.N. Christiansen FAA
- . Dr. J.L. Farrands CB FTS
- . Professor D.F. Craig FRS FAA
- . Dr. L.W. Davies AO FAA FTS

and will be based on scientific and technological merit. Activities in the following areas are given priority:

- . biotechnology
- . biomedical technology
- . scientific instrumentation
- . information technology
- . advanced materials technology
- . advanced manufacturing technology
- . marine science

Projects in other areas will be considered. Co-operation with China under the China/Australia Science and Technology Agreement funded by DST is mainly restricted, at present, to science and technology policy exchanges.

Closing dates for applications by Australian scientists and technologists are:

- . 1 April 1985 for activities commencing between 1 January and 30 June 1986.
- . 1 October 1985 for activities commencing between 1 July and 31 December 1986

Copies of the Australian guidelines containing details of application procedures are available from:

The Director, International Activities (Bilateral Science and Technology Agreements), Department of Science and Technology, P.O. Box 65, Belconnen, ACT, 2616. Telephone (062) 644280.

Staff Changes and Movements

APPOINTMENTS

Miss G.B. Defaveri, General Library Assistant, Library
 Mrs. S.M. Abraham, Administrative Officer, Planning and Development
 Mr. N. Ballardie, Graduate Assistant, Academic and Student Services
 Mr. A. Grant, Technical Officer, Civil and Mining Eng.
 Mrs. J. Cassanell, P/T Female Cleaner, Buildings and Grounds
 Mrs. E. Kearney, P/T Female Cleaner, Buildings and Grounds
 Mr. B. Partridge, Principal Lecturer I, School of Health Sciences

DEPARTURES

Mr. A.S. Brooks, Civil and Mining Engineering

Seminars

Details of the seminars below are displayed on the "Campus News" Notice Board at 49 Northfields Ave.

DEPARTMENT OF CHEMISTRY

Location: Bldg. 18, Rm. 206

11.30 a.m. Friday, November 23:
Dr. Ken Dyll, Department of Chemistry, Monash University, Clayton, Victoria.
Title: 'Chemistry and Relativity'.

Convenor: Dr. Peter Burton (042) 270505.

DISABILITY REACH-OUT

Public meeting for action in 1985

Where: Illawarra Society for Crippled Children
(Cram House) 362 Crown Street, Wollongong

When: Thursday, November 29, 7.30 p.m.

This is being organised by the Centre for Multicultural Studies (University of Wollongong), the Illawarra Handicapped Persons Trust, the Regional Migrant Health Centre, and the Italian Social Welfare Organisation.

Enquiries:

Ron Witton	270779
Trish Donaldson	284500
Glen Mitchell	746233
Emma Giusti	288222

WORLD CONGRESS ON EDUCATION AND TECHNOLOGY

May 22 - 25 1986, Vancouver, Canada.

UNIVERSITY OF THE SOUTH PACIFIC

Summer School 24 June to 24 July 1985.

AUSTRALIAN INSTITUTE OF MANAGEMENT

Topic: 'Equal Opportunity Law - Its Effect on Employment'

Guest Speaker: Greg Tillet, Education Officer, Anti Discrimination Board, Sydney.

Date: Wednesday, 5 December, 1984.

Time: 5.30 p.m. Refreshments

6.00 p.m. Address and Question Time.

Venue: Illawarra County Council Administration Building, Level 7, Bridge Street, Coniston.

Mr. Tillet has been with the Anti Discrimination Board for the past 12 months. Prior to that he worked in London as a Social Worker for a period of two years. Before going to London he was a lecturer at University of Sydney on Religious Studies.

If you, your friends or business colleagues are interested please contact Mrs. Thelma Smyth between 10 a.m. and 3 p.m. Monday to Thursday at 270075 or a.h. 284075 for a reservation before Thursday 29 November. Charge of \$3.00 will be made and light refreshments served. We look forward to your joining us on this occasion.

Concerts, Exhibitions and Entertainment

PAINTINGS AND POTTERY

Warwick and Ann Webb have pleasure in inviting readers to an exhibition and sale of their paintings and pottery at Collegians, Balgownie.

Official opening Friday, 23rd November, 1984 at 7.00 p.m. and on Saturday, 24th November, 10 a.m. - 8 p.m. Sunday, 25th November, 10 a.m. - 3 p.m.

CHRISTMAS CONCERT

The City of Wollongong Symphony Orchestra in association with 2WL Position 13 will present a family concert of Christmas music on Saturday, 8th December at Wollongong Town Hall.

The Orchestra will be joined by the Illawarra Choral Society, the University Singers and organist, Glenda Snyder.

Among the works to be presented are some Australian Carols, some interesting carols from bygone ages and from other countries, popular choruses from Handel's 'Messiah' and a group of traditional carols in which audience participation will be invited. Several light orchestral pieces will also be on the program.

This is a non-subscription concert and admission will be by single (\$7 and \$5) or family ticket (\$15 - up to four). Bookings available from Jurjens.

The CWSO and 2WL extend a warm invitation to the people of Wollongong to join them for a pleasant evenings entertainment.

WEDNESDAY GALLERY

4/328 Crown Street, Wollongong.

Paintings, pots and paraphernalia.

Open Wednesdays only 10 a.m. - 5 p.m. Enquiries to Bev - Phone 28.3853.

"WONDERFUL WOLLONGONG" Live on Stage

McCabe Park - 10-25 November, 1984.

For your delight, amusement and edification, your professional theatrical company, Theatre South presents "Wonderful Wollongong" live on stage in an extraordinary versatile and splendid New Theatre, erected especially for this auspicious occasion.

You're invited to participate in this very special celebration of the City's first 150 years. We will recall much of the history that you can remember and much, much more that we have searched for and discovered. (And some a little fictitious). You could be in for some surprises, and a lot of laughter and tears.

Tickets now available on Campus, Room 1109, Social Science Building - Enquiries 3705, Theatre South.

MINERVA BIRD

The Arcadians present this World Premiere of a rip-roaring tale of New South Wales in the Gold Rush days. Cathy Bates and Robert Martin play the leads in an entertainment to please all ages. Sponsored by Illawarra Credit Union.

Book and lyrics - John Scholes
Music composed by John Scholes
Orchestral arrangement by Tony Smith
Choreography by Pauline Young
Directed by Leo Sturman

Venue: Wollongong Town Hall Theatre

Dates: November 9, 10, 13, 14, 16, 17, 20, 21, 23, 24,
at 8.00 p.m. Matinee Sunday 18 at 2.00 p.m.

Tickets: \$6.00 and \$4.00 concessions.

Bookings: Wilsons Record Bar (291470) or Town Hall.

Equal Employment Opportunity Project

POSSIBLE ESTABLISHMENT OF AN INTERNAL GRIEVANCE MECHANISM

The Director of Equal Opportunity in Public Employment (D.E.O.P.E.) has circulated a discussion draft, "Guidelines on Internal Grievance Mechanisms". Copies have now been sent to Staff Associations and Unions, all Heads of Departments/Units, members of the Affirmative Action Working Party (A.A.W.P.) and the E.E.O. Contact Network for consideration and comment.

All members of staff are invited to read the draft document and copies are available from the E.E.O. Project Officer.

A number of tertiary institutions are now developing internal grievance mechanisms. The Council of Macquarie University recently approved a recommendation from their Equal Opportunity Committee to establish an internal grievance mechanism. Details of the Macquarie University plan are also available from the E.E.O. office.

Clearly there is a need for widespread consultation in regard to the establishment of an internal grievance mechanism at the University of Wollongong. Comments on the discussion draft are invited.

E.E.O. SURVEY RESULTS

Frequencies and percentages for each question asked in both questionnaires are now available and have been forwarded to the Affirmative Action Working Party, all Heads of Departments/Units and the E.E.O. Contact Network. Comments are now available from questionnaire one and the questionnaire two comments will be available shortly.

GENERAL

The E.E.O. Co-ordinator attends as many selection committee meetings as possible and will be in attendance at promotions and research grants committee meetings in the coming weeks. While the Co-ordinator cannot

discuss confidential details from any of these committees she invites submissions on the procedures adopted and suggestions on how current practices might be improved. Members of staff are reminded that the E.E.O. Management Plan must include specific strategies that relate to each aspect of the employment process - recruitment, selection, induction, promotion, reclassification, staff training and development and all conditions of service.

Staff wishing to make submission on any of these topics are reminded to do so as soon as possible.

International News

The Lee Kuan Yew Distinguished Visitors Programme is funded by the proceeds from an endowment fund established in 1983 by friends and well-wishers in honour of the Prime Minister of Singapore, Mr. Lee Kuan Yew, on his sixtieth birthday.

The purpose of the Programme is to invite eminent and distinguished academics as Lee Kuan Yew Distinguished Visitors to Singapore. The Visitors may be from any academic discipline appropriate to the National University of Singapore, the Nanyang Technological Institute and Singapore but the emphasis initially will be on high technology, management, biotechnology, law and medicine. The Visitors will make high level academic contributions to the National University of Singapore through lectures, seminars, meetings and interaction with staff. They will also make similar contributions to the public.

The duration of the visit should be for three months or longer, but shorter periods would certainly be considered.

The Visitors will be provided an honorarium, first class air travel for themselves and their spouse, first class hotel accommodation or luxury apartment (for those on long visits), a chauffeured car for local travel and secretarial service, if needed.

For further information, write to: The Secretary, Lee Kuan Yew Distinguished Visitors Programme, University Liaison Office, National University of Singapore, Kent Ridge, Singapore 0511.

* * * * *

The Commonwealth Department of Education and Youth Affairs is inviting applications for eight scholarships for tertiary study in China from September 1985 under the Australia-China Student Exchange Scheme.

The scholarships, which are tenable for two academic years, are available to Australian citizens aged under 35 years who, preferably but not essentially, are reasonably proficient in the Chinese language.

Places will also be available for self-funded students.

Applicants should be able to demonstrate high academic or professional ability, be strongly committed to Chinese studies or have a good professional reason for wanting to study in China.

Students can study at the Beijing Languages Institute to improve their Chinese before being enrolled in a specialist course at a Chinese university. They can also spend the entire period studying the Chinese language.

The scholarships provide return air fares, tuition fees, a living allowance, a contribution to medical and dental expenses and assistance with internal travel in China.

Application forms and further information may be obtained from: The Secretary, Australia-China Student Exchange, Department of Education and Youth Affairs, P.O. Box 826, Woden, ACT, 2606.

* * * * *

The 15th Federation Internationale des Professeurs de Langues Vivantes World Congress will be held in Helsinki, Finland from 22-26 July 1985. The theme of the Congress is "Modern Language Learning - Competence Through Confidence", and further information and registration forms may be obtained from: SUKOL, Annankatu 22 A 1, SF-00100 Helsinki 10, Finland.

Job Vacancies

Details of the following positions are displayed on the Campus News Notice Board situated at 49 Northfields Avenue.

Commonwealth Parliamentary Association	Secretary-General
Adelaide	Tutor in Pure Mathematics Lecturer in Civil Engineering Research Associate in Agriculture
ANU	Postdoctoral Fellows in Pacific Anthropology
NSW	Lecturer in Ethnomusicology
Murdoch	Tutor in Biology Internship in Pathology
Macquarie	Snr. Tutor in Statistics Tutors in Law, Biology, Chemistry, Economic and Financial Studies, History, Philosophy and Politics

Scholarships and Prizes

Details of the scholarships and prizes below are displayed on the Campus News Notice Board situated at 49 Northfields Avenue. Application forms are available from the Student Enquiries Office.

Greek Government	Scholarships
St. John's College Cambridge	Research Studentships
Harvard	Robert Gordon Menzies Scholarships
Stockholm	One year diploma course in Social Sciences and Swedish language
John Carter Brown Library	Research Fellowships

Advertisements

Advertisements in "Campus News" are repeated each week until withdrawn, OR, until new advertisements push the old ones off the end of the column, whichever occurs first.

FOR RENT

3 bedroom house, double lock up garage, Kiernan Ave., Gwynneville. Phone 292611 or 283639 after hours. \$85.00 per week.

TOYOTA LANDCRUISER

1979 model stationwagon, wide wheels, Dick Cepek tyres, air cond., F.M. radio cassette, bucket seats, weather shields, bullbar, tow bar, roof rack, Holley carb., extractors. \$6850. Contact Barry 673148 (home) 270500 (University).

HOUSE FOR RENT

Large two bedroom house at Keiraville available early December to July 1, 1985. For details phone ext. 3840 or leave message to ring back at 3845.

TO LET

Penthouse flat in vicinity of Wollongong hospital. Extensive living area includes 2 bedrooms, utility rooms, 2 bathrooms, kitchen, 2 balconies etc. Phone 288669.

FOR SALE

Modern Bulli clinker brick home. 4 bedrooms. Unanderra adjacent Coachwood Park Estate. Lush native shrubbery, ferns and trees. Garden self maintaining. 15 mins by road to Uni. Phone 716755.

ACCOMMODATION IN LISMORE

Accommodation at reasonable rates is available at the Northern Rivers College. Phone (066) 212267).

FOR SALE: ELECTRONIC LEARNING AID

Thinking of what to get your children for Christmas? Well have a look at EDUTECH'S new Electronic Learning Aid.

You don't know what an Electronic Learning Aid is! Well ring Les on 563174 who will show you the amazing power of the E.L.A. to do 10 programmes covering Music, Maths and Spelling. At \$99 it leaves buying a computer for dead. Suitable for ages 4 to 12 years.

FOR SALE

Fibreglass Ski Boat with Trailer. A1 condition. Inboard Ford V8; reg. April 1985. \$2800 o.n.o. Telephone ext. 3911 - Mrs. Politis.

CHRISTMAS CAKES

Again Lions Christmas Cakes are available from Bill Trueman (Library). Orders or purchase now - 1.5 kg. for \$5.50. Ext. 3539.

FOR SALE

Grey Thoroughbred mare 15hh, 6 years old. Suitable for dressage or Pony Club. Preferably rider with some experience. Enquiries please phone 286305 after 5 p.m. weekdays or all day Saturday and Sunday.

ILLAWARRA COMMUNITY BROADCASTERS PROGRAMME FOR NOVEMBER 24 - DECEMBER 2 1984 TEST TRANSMISSION

SUNDAY NOVEMBER 25

6.00am	to	8.00am	Breakfast show with Paul Williams and Peter Smith
8.00am	to	9.00am	Interviews, music, etc
9.00am	to	9.15am	South Coast Labour Council
9.15am	to	9.30am	T.A.F.E. Show
9.30am	to	10.00am	N.O.W. Show
10.00am	to	10.30am	Dont let Racism Divide Us. Migrant Resource Centre
10.30am	to	12.00	Take 5 with Nola Dunne
12.00	to	12.30pm	Official opening
12.30pm	to	1.00pm	Songs at my Piano with Pam McKune
1.00pm	to	1.30pm	Songs of Scotland - reminiscences with Mary Black
1.30pm	to	2.30pm	Indian Hour
2.30pm	to	3.00pm	Music of the World
3.00pm	to	3.30pm	East Timor - Betrayed but not Beaten
3.30pm	to	4.00pm	A New Party - The NDP. WUNDA looks at the issues.
4.00pm	to	4.30pm	Living Sound Radio with Illawarra Christian Broadcasters
4.30pm	to	6.00pm	Battlelines 1: non-linear drama with Nick Tsoutas
6.00pm	to	7.00pm	Latin American Perspective
7.00pm	to	8.00pm	The Father Paul Show with Fr. Paul Donaghue
8.00pm	to	9.00pm	Romance in Song with John Whatley
9.00pm	to	10.00pm	The Glennifer Brae Hour - Wollongong Conservatorium of Music
10.00pm	to	10.30pm	Australia at Risk: The Daintree Wilderness
10.30pm	to	11.30pm	Elizabethan Music - a 5-part series with Chris Wilder
11.30pm	to	1.00am	Jazz
1.30am	to	6.00am	Midnight to Dawn with Gary Wright

MONDAY NOVEMBER 26

6.00am	to	8.00am	Breakfast Show with Paul Williams and Peter Smith, Guest Greg Butler (DEM) Phone in !
8.00am	to	8.15am	Winnie the Pooh
8.15am	to	9.00am	Interviews, music etc
9.00am	to	9.30am	Book Chat with Jean Fergusson
9.30am	to	9.45am	South Coast Labour Council
9.45am	to	10.00am	T.A.F.E. Show
10.00am	to	10.30am	Crack a Joke with Malcolm Black
10.30am	to	11.00am	Out of Order Show
11.00am	to	11.30am	Multiple Sclerosis Society
11.30am	to	12.00	National Parks Association - Outdoor activities etc
12.00	to	1.00pm	Croatian programme with Rokko
1.00pm	to	2.00pm	COMMUNITY NEWS
2.00pm	to	3.00pm	Polish Hour
3.00pm	to	4.00pm	TALKING PAPER Barry Blair reads for the Print Handicapped
4.00pm	to	5.00pm	Vietnamese Association
5.00pm	to	6.00pm	BOP SHOP
6.00pm	to	7.00pm	Country Music with Tony DeLiseo
7.00pm	to	8.00pm	German Hour - Operetta Overtures
8.00pm	to	9.00pm	Glennifer Brae Hour - Bach with Phillida Green (piano)
9.00pm	to	10.00pm	Broadway Melody with John Whatley
10.00pm	to	11.00pm	Illawarra Folk Club Hour
11.00pm	to	11.30pm	Going Underground with Rodney Knowles
11.30pm	to	12.00	Aussie pop
12.00	to	6.00am	Perfect Match
			The Wee Hours with the Illawarra Ethnic Council

TUESDAY NOVEMBER 27

6.00am	to	8.00am	Breakfast Show - Gary Wright and Gail Mitchell (LIB)-phone in
8.00am	to	8.15am	Winnie the Pooh
8.15am	to	9.00am	Music, Talks etc
9.00am	to	9.15am	South Coast Labour Council
9.15am	to	9.30am	T.A.F.E.
9.30am	to	11.00am	Take 5 with Nola Dunne
11.00am	to	11.30am	Lake Heights Neighbourhood Centre
11.30am	to	12.00	Nation Parks Association - the Environment
12.00	to	1.00pm	Laotian Hour
1.00pm	to	2.00pm	COMMUNITY NEWS AND INFORMATION
2.00pm	to	3.00pm	Polish Hour
3.00pm	to	4.00pm	TALKING NEWSPAPER with Barry Blair
4.00pm	to	5.00pm	Central America Speaks
5.00pm	to	6.00pm	BOP SHOP
6.00pm	to	7.00pm	Sing along memory lane with John Whatley
7.00pm	to	7.30pm	German Program
7.30pm	to	8.00pm	Early Music with Vanessa Woodhill
8.00pm	to	9.00pm	Daintree Rainforest - David Bellamy
9.00pm	to	10.00pm	Glennifer Brae Hour - Beethoven Sonatas for Violin and piano.
10.00pm	to	11.00pm	Institute of Creative Arts Hour - music from the Institute
11.00pm	to	12.00	Jazz
12.00	to	6.00am	Midnight to dawn with Peter Smith

WEDNESDAY NOVEMBER 28

6.00am	to	8.00am	Breakfast Show - Gary Wright and Colin Hollis (LAB) Phone-in!
8.00am	to	8.15am	Winnie the Pooh
8.15am	to	9.00am	More phone in with Collin Hollis
9.00am	to	9.30am	Book chat with Jean Fergusson
9.30am	to	9.45am	South Coast Labour Council
9.45am	to	10.00am	T.A.F.E.
10.00am	to	10.30am	Where Milk Comes From - a documentary on the dairy business by Laura Molino
10.30am	to	11.00am	Uranium and the Nuclear State. WUNDA
11.00am	to	11.30am	Gaelic Music - the skirl of the pipes an' all tha'
11.30am	to	12.00	National Parks Association - peace and the World Environment
12.00	to	1.00pm	Italian Hour
1.00pm	to	2.00pm	COMMUNITY NEWS AND ANNOUNCEMENTS
2.00pm	to	3.00pm	Polish Program
3.00pm	to	4.00pm	TALKING NEWSPAPER - Barry Blair
4.00pm	to	5.00pm	Croatian Catholic Program - George Dragovich
5.00pm	to	6.00pm	BOP SHOP
6.00pm	to	7.00pm	German Programme
7.00pm	to	8.00pm	The Father Paul Show - Fr. Paul Donaghue
8.00pm	to	9.00pm	The Sounds of Country with John Whatley
9.00pm	to	10.00pm	Glennifer Brae Hour - hear what local talent we have !
10.00pm	to	11.00pm	Elizabethan music with Chris Wilder
11.00pm	to	12.00	The Institute hour. Offerings from the Institute of Creative Arts
12.00	to	6.00am	Midnight to Dawn

THURSDAY NOVEMBER 29

6.00am	to	8.00am	Breakfast show - John Whatley and Rod Lander (NDP) Phone In !
8.00am	to	8.15am	Winnie the Pooh
8.15am	to	9.00am	Interviews, music
9.00am	to	9.15am	South Coast Labour Council
9.15am	to	9.30am	T.A.F.E.
9.30am	to	10.00am	Lake Illawarra Management Committee
10.00am	to	11.00am	Take 5 with Nola Dunne
11.00am	to	11.30am	The Out of Order Show
11.30am	to	12.00	National Parks Association - the greening of W'gong
12.00	to	1.00pm	Croatian Hour with Rokko
1.00pm	to	2.00pm	COMMUNITY NEWS AND INFORMATION
2.00pm	to	3.00pm	Polish hour
3.00pm	to	4.00pm	TALKING NEWSPAPER Barry Blair
4.00pm	to	5.00pm	Lebanese Hour with Nelson Seeman
5.00pm	to	6.00pm	BOP SHOP
6.00pm	to	7.00pm	Indonesian Hour
7.00pm	to	8.00pm	Country Music with Tony DeLiseo
8.00pm	to	9.00pm	Sounds Smooth with John Whatley
9.00pm	to	10.00pm	Glennifer Brae - This Year's Finalists
10.00pm	to	11.00pm	Elizabethan Music - Chris Wilder
11.00pm	to	12.00	Illawarra Folk Club
12.00	to	12.30am	Going Underground - Rodney Knowles
12.30am	to	6.00am	Midnight to dawn - Rodney Knowles and Don MacLeod

FRIDAY NOVEMBER 30TH

6.00am	to	8.00am	Breakfast show with Tony Deliseo and Frank Arkeli - PHONE IN !
8.00am	to	8.15am	Winnie the Pooh
8.15am	to	9.00am	more Frank! Keep Phoning....
9.00am	to	9.30am	Book Chat with Jean Fergusson
9.30am	to	9.45am	South Coast Trades and Labour Council
9.45am	to	10.00am	T.A.F.E.
10.00am	to	11.00am	Musique Electronique - John Wells
11.00am	to	11.30am	Gaelic Music
11.30am	to	12.00	National Parks Association - a potpourri of local issues
12.00	to	1.00pm	Vietnamese Culture - Trang
1.00pm	to	2.00pm	COMMUNITY NEWS AND INFORMATION
2.00pm	to	3.00pm	Polish Hour
3.00pm	to	4.00pm	TALKING NEWSPAPER Barry Blair
4.00pm	to	5.00pm	Croatian Catholic Hour - George Dragovich
5.00pm	to	6.00pm	BOP SHOP REQUESTS
6.00pm	to	6.30pm	Beasts and Baroque -Gayle Murray and Roberta Hamilton
6.30pm	to	7.00pm	Women in Local Government Dianne Masland takes a studied look at the Wollongong scene
7.00pm	to	8.00pm	Country Music with Tony DeLiseo
8.00pm	to	9.00pm	Glennifer Brae Hour - Beethoven Violin Sonatas
9.00pm	to	10.00pm	Schumann Lieder by Famous Singers - Rev. William Pollack
10.00pm	to	11.00pm	Elizabethan Music with Chris Wilder
11.00pm	to	11.30pm	Going Underground with Rodney Knowles
11.30pm	to	6.00am	Midnight to Dawn with John Whatley, 50's and 60's REQUESTS

SATURDAY DECEMBER 1

6.00am	to	9.00am	Breakfast Show with Paul Williams and Peter Smith , maybe even a guest !
9.00am	to	9.15am	South Coast Labour Council
9.15am	to	9.30am	Music
9.30am	to	10.30am	Christmas Music with Nola Dunne
10.30am	to	11.00am	Issues in Local Government - Dianne Masland aims her slingshot.
11.00am	to	12.30pm	Battlelines 2 - narrative in cinema Jane Haenkel
12.30pm	to	1.00pm	COMMUNITY NEWS, GIGS etc
1.00pm	to	2.00pm	Latin American Perspective
2.00pm	to	3.00pm	German Hour
3.00pm	to	3.30pm	Music of the World
3.30pm	to	4.30pm	The Beatles with Margaret Wells
4.30pm	to	5.30pm	Songs of Many Lands with Rev. Pollack
5.30pm	to	6.00pm	Migrant Health Services
6.00pm	to	7.00pm	Illawarra Folk Club
7.00pm	to	8.00pm	The Art of the Bassoon with bassoonist Nigel Edwards
8.00pm	to	9.00pm	Glennifer Brae Hour - Music for Clarinet, strings and piano.
9.00pm	to	10.00pm	Elizabethan Music Chris Wilder
10.00pm	to	11.30	Jazz
11.30pm	to	12.00	Going Underground (for the last time)
12.00pm	to	6.00am	Midnight to Dawn with Gary Wright and Paul Williams
6.00am			CLOSE OF TEST TRANSMISSION (WHEN YOU NEXT HEAR US WE WILL BE LICENSED !!)

Illawarra Community Broadcasters is a listener supported community project which, when licensed (hopefully towards the end of 1985), will, through the establishment of a Public Access radio station, create a means by which ALL people in the Illawarra can share their concerns, culture, interests and skills with the entire community.

This is the last test transmission that Illawarra Community Broadcasters will be holding, with luck, at this time in 1985 ICB will be a fully licensed Public Access Station, serving the Illawarra region. However, between now and then there is much to be done, not least of which is a move to new premises (unless some way can be found to save the PDS building), training for future program makers and presenters, legal work for the license and so on.

Please assist your community radio station - become a member, donate money (all donations are fully tax deductible), and most importantly donate your time and skills as a volunteer worker in the station.

Be able to say: " I OWN A RADIO STATION ! "