



UNIVERSITY  
OF WOLLONGONG  
AUSTRALIA

University of Wollongong  
**Research Online**

---

University of Wollongong Union Annual Reports

Corporate Publications Archive

---

1984

# University of Wollongong Union Annual Report 1984

University of Wollongong

---

## Recommended Citation

University of Wollongong, "University of Wollongong Union Annual Report 1984" (1984). *University of Wollongong Union Annual Reports*. 13.  
<http://ro.uow.edu.au/uowunionannrep/13>

Research Online is the open access institutional repository for the University of Wollongong. For further information contact the UOW Library:  
[research-pubs@uow.edu.au](mailto:research-pubs@uow.edu.au)

---

# University of Wollongong Union Annual Report 1984

**THE UNIVERSITY  
OF WOLLONGONG  
UNION**

---

**18TH**

**ANNUAL REPORT**

**1984**

---

# THE UNIVERSITY OF WOLLONGONG UNION

## GENERAL REPORT

1984 saw very heavy usage of Union services as a result of the large increase in the number of students enrolled at the University and at times overcrowding of facilities became critical.

By the middle of the year, however, the Board of Management had adopted a positive response to the situation. Plans for the long-term development of new facilities were formulated; new staff appointments were made in order to provide the basis for expansion of services; alterations to the main Union Building were carried out to create additional accommodation and a major upgrading of the Institute Canteen was commenced. Lack of substantial financial reserves, however, inhibited some suggested development projects.

Because of the increase demands placed on Union facilities by campus users some reduction in usage by the local community occurred in consequence. Nevertheless the Union continued to attract many thousands of visitors to the campus during the year for private functions and entertainment events, the 2WL Expo held at the Union in October in conjunction with University Open Day was again attended by over 40,000 people and the Community Clubs and Societies Weekend organised by the Union in July was marked by the participation of nearly 60 local organisations.





**BOARD OF MANAGEMENT 1984 - 85**

(from 4th September 1984)



**Chairperson:**  
**John Lee**



**Deputy Chairperson:**  
**Joe Munive**

**BOARD MEMBERS**

**Khalid Ali**

**Don Beale**

**Michael Brcic**

**Mark Ferrington**

**Steve Heslop**

**Des Jamieson**

**Brendan Jones**

**Joanne McLean**

**Ben Meek**

**Winifred Mitchell**

**John Panter**

**Margaret Pemberton**

**Harvey Purse**

**Maurie Scott**

\* \* \* \* \*

**Secretary-Manager:**  
**Geoff Williams**

## STANDING COMMITTEES 1984 - 85

### FINANCE & DEVELOPMENT

K. Ali  
D. Beale  
P. Bottele  
M. Brcic  
D. Delmage  
M. Ferrington (Chairperson)

J. Hartley  
J. Lee  
B. Meek  
J. Munive  
H. Purse  
G.A. Williams

### SERVICES & HOUSE

K. Ali  
V. Arrowsmith  
J. Collins  
L. Connery  
P. Connolly  
M. Ferrington

B. Meek  
J. Munive  
P. O'Connor  
M. Pemberton  
H. Purse (Chairperson)  
L. Wakeford  
G.A. Williams

### ACTIVITIES

K. Ali  
C. Buecher  
S. Heslop  
D. Jamieson  
B. Jones

J. Lee (Chairperson)  
K. Morgan  
J. Munive  
M. Scott  
I. Simington  
G.A. Williams

### MEMBERSHIP

K. Ali  
W. Mitchell  
J. Munive (Chairperson)

J. McLean  
M. Pemberton  
G.A. Williams

### INSTITUTE STUDENTS' ASSOCIATION

President : J. Lee  
Vice-President : D. Preston  
Secretary : J. McLean  
Cultural Secretary : S. Heslop  
Treasurer : D. Delmage

## THE UNION BUILDING

An extension to the Dining Room and a redesign of the Cafeteria Servery/Takeaway Bar were completed in readiness for the start of the 1984 academic year, thanks mainly to the excellent work of Peter McNamara, the University Building Projects Supervisor. The enhanced facilities just enabled the Union's catering service to cope with the greatly increased number of customers, although queues remained long and shortage of dining space remained critical at peak times. A refurbishment of the Bistro was also carried out over the summer period.

The re-designed Cafeteria-servery



During the year a new Board Room was constructed on the old Northern Lounge balcony, allowing the former Board Room to be converted into much-needed additional office accommodation. The Table-Tennis room was converted into offices for the Sports Association and the Squash Courts foyer and staircase area was upgraded as part of the process of establishing a new operational base for the Sports Association.



Extensive recarpeting was necessary on the Upper level of the Union Building and curtains and furniture are gradually being replaced throughout the building because of the heavy wear and tear which has resulted from increased usage in recent years.

A Commander telephone system was installed in December because of the inadequate nature of the old switchboard.



The northern side of the Union building showing the Dining Room extension, the new Northern Lounge balcony and new Board Room.



View from the new Northern Lounge balcony.

Towards the end of 1984 upgrading of the Institute Canteen was commenced with a view to creation of a major new catering outlet for the campus for the beginning of the 1985 academic year.



## MEMBERSHIP

In 1984 there were 6,019 student members (4,035 in 1983) and 800 staff members (850 in 1983).

The total of life members at the end of 1984 was 1032.

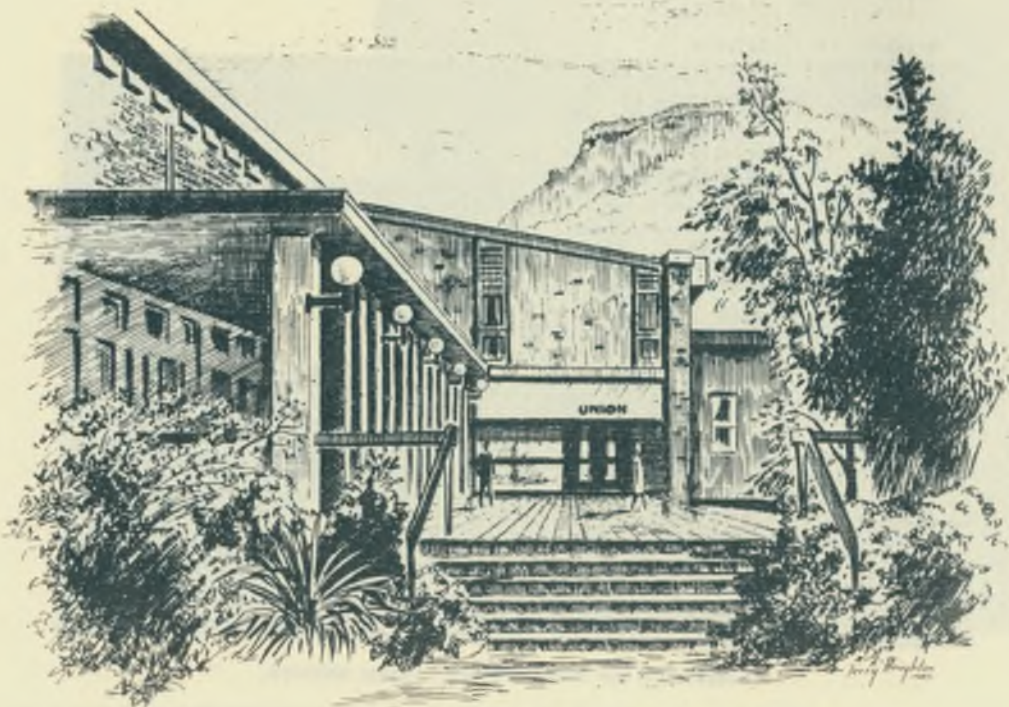
The Union membership subscription for 1984 was \$88.00.

During the year the Union Board of Management again examined in detail the question of whether to establish a differential membership subscription for part-time students. The Board recommended to University Council that a Special Group be established to examine any courses which might justify a revised fee structure. This group reported that no special fees were currently necessary and so therefore the existing fee structure remained in force. The issue will, however, remain under review in 1985.

## UNION HONORARY LIFE MEMBERS

Dr. F.M. Matthews †  
Ian Dunn  
Susan Stevenson  
Gerald Stuart-Street  
Winifred Mitchell

† Deceased



THE UNIVERSITY  
OF WOLLONGONG  
UNION

---

ACCOUNTS FOR  
THE YEAR ENDED  
31ST DECEMBER, 1984

---

**THE UNIVERSITY OF WOLLONGONG UNION**  
**BALANCE SHEET AS AT 31ST DECEMBER, 1984**

<b>ACCUMULATED FUNDS</b>	<b>1984</b>	<b>1983</b>
Balance as at 1st January, 1984	283,244.08	170,393.90
Add: Surplus/(Deficit) of Income over Expenditure	124,666.82	112,850.18
	407,910.90	283,244.08
<b>RESERVES</b>		
Balance at 1st January, 1984	37,946.54	37,018.96
Add: Amount transferred from Income and Expenditure Account	3,668.99	927.58
	41,615.53	37,946.54
<b>TOTAL ACCUMULATED FUNDS &amp; RESERVES</b>	<b>\$449,526.43</b>	<b>\$321,190.62</b>
Represented by:		
<b>FIXED ASSETS</b>		
Building Improvements - at cost	47,843.64	34,595.64
Less: Accumulated Depreciation	12,922.36	9,751.36
	34,921.28	24,844.28
Plant and Equipment - at cost	159,459.33	86,530.34
Less: Accumulated Depreciation	50,344.26	41,358.26
	109,115.07	45,172.08
Furniture and Fittings - at cost	124,495.08	75,030.03
Less: Accumulated Depreciation	38,952.91	32,375.91
	85,542.17	42,654.12
Kitchenware - at cost	6,846.14	6,846.14
<b>TOTAL FIXED ASSETS</b>	<b>236,424.66</b>	<b>119,516.62</b>
<b>INVESTMENTS</b>		
Cash on Deposit -		
Westpac Banking Corporation		
- Investment Account	38,275.08	88,275.08
- Capital Investment Account	71,598.25	1,474.78
National Australia Bank		
- Institute Capital Development Fund	41,615.53	37,946.54
Illawarra Mutual Building Society		5,551.64
<b>TOTAL INVESTMENTS</b>	<b>151,488.86</b>	<b>133,248.04</b>
<b>CURRENT ASSETS</b>		
Stock on Hand - at cost	73,583.14	60,391.12
Sundry Debtors	55,577.26	29,047.09
Less: Provision for Doubtful Debts	( 500.00)	( 500.00)
Prepayments	1,053.00	1,363.50
Cash at Bank		
- Westpac Banking Corporation	46,428.01	85,445.28
- National Australia Bank	22,713.27	24,340.46
Cash on Hand	2,900.00	2,600.00
<b>TOTAL CURRENT ASSETS</b>	<b>201,754.68</b>	<b>202,687.45</b>
<b>TOTAL ASSETS</b>	<b>589,668.20</b>	<b>455,452.11</b>
<b>LESS LIABILITIES</b>		
<b>NON-CURRENT LIABILITIES</b>		
Provision for Long Service Leave	8,578.35	30,758.79
<b>CURRENT LIABILITIES</b>		
Sundry Creditors	42,954.66	64,636.93
Accrued Charges	22,846.35	7,078.27
Provision for Annual Leave	20,628.07	16,357.99
Provision for Long Service Leave	45,134.34	15,429.51
<b>TOTAL CURRENT LIABILITIES</b>	<b>131,563.42</b>	<b>103,502.70</b>
<b>TOTAL LIABILITIES</b>	<b>140,141.77</b>	<b>134,261.49</b>
<b>EXCESS OF ASSETS OVER LIABILITIES</b>	<b>\$449,526.43</b>	<b>\$321,190.62</b>

The accompanying Notes form part of these accounts.



THE UNIVERSITY OF WOLLONGONG UNION

INCOME AND EXPENDITURE ACCOUNT FOR THE YEAR ENDED 31ST DECEMBER, 1984

	1984	1983
<b>INCOME</b>		
Members' Fees - Current Year	518,747.41	377,346.00
- Received re previous year	-	21,385.00
Life Members & Associates Fees	1,381.00	1,201.00
Commissions	1,868.05	1,674.99
Interest Received (Note 1(d))	31,350.87	28,228.67
Donations and Sundry Income	2,535.17	261.32
Room Hire	2,469.40	1,777.34
Entertainment Machines	-	45.00
Rent Received	4,670.00	4,670.00
Sports Association Subvention	62,290.00	47,540.00
Students' Representative Council Subvention	2,000.00	3,200.00
Grant for Recreation Assistant	12,800.00	11,280.00
Surplus on Shop Trading	17,256.26	13,974.23
Surplus on Catering Trading	( 27,719.33)	14,689.87
Public Telephone	530.47	( 104.33)
<b>TOTAL INCOME</b>	<b>630,179.30</b>	<b>527,169.09</b>
<b>LESS: EXPENDITURE</b>		
<b>Staff</b>		
Wages	316,672.16	250,325.34
Payroll Tax	15,635.73	11,930.64
Provision for Long Service Leave	13,336.00	21,583.13
Compensation	13,543.74	8,653.31
Superannuation	5,614.55	3,074.80
Uniforms	2,177.58	2,081.38
	366,979.76	297,648.60
Less: Recoupment of Wages	14,944.18	11,178.33
	352,035.58	286,470.27
<b>Office</b>		
Telephone	5,064.45	3,808.74
Postage	1,965.55	3,413.99
Printing and Stationery	12,335.37	14,667.49
	19,365.37	21,890.22
<b>Maintenance</b>		
Security	4,299.00	1,370.00
Cleaning	7,655.50	6,288.22
Garbage	10,260.00	10,290.00
Repairs and Maintenance	30,308.31	21,184.77
	52,522.81	39,132.99
<b>Services</b>		
Union Catering	2,971.68	1,745.80
Newspapers and Periodicals	-	66.75
T.V. Hire	275.00	275.00
	3,246.68	2,087.55
<b>Activities</b>		
Clubs and Societies	2,669.03	2,025.34
Programmed Activities	19,978.47	13,468.64
Institute Students' Association Grant	15,632.00	14,274.00
	38,279.50	29,767.98
<b>Other Expenditure</b>		
Wage Pause Programme Contribution	205.08	-
Audit Fees	3,800.00	2,900.00
Depreciation	20,204.00	11,520.00
Insurances	1,538.50	1,363.50
Subscriptions and Donations	1,221.40	923.83
Travel Expenses and Allowances	1,758.50	1,472.00
Sundry Administration Expenses	4,286.07	1,817.19
Child Care Expenses Allocation	2,750.00	2,400.00
Loss on Disposal of Fixed Assets	630.00	917.80
Architects Fees re Proposed Extension	-	10,728.00
	36,393.55	34,042.32
<b>TOTAL EXPENDITURE</b>	<b>501,843.49</b>	<b>413,391.33</b>
<b>EXCESS OF INCOME OVER EXPENDITURE</b>	<b>128,335.81</b>	<b>113,777.76</b>
Less: Interest Received on Institute Capital Development Fund Investment transferred to Reserve	3,668.99	927.58
<b>AMOUNT TRANSFERRED TO ACCUMULATED FUNDS</b>	<b>\$124,666.88</b>	<b>\$112,850.18</b>

The accompanying Notes form part of these Accounts.



THE UNIVERSITY OF WOLLONGONG UNION  
TRADING STATEMENTS FOR THE YEAR ENDED 31ST DECEMBER, 1984

	1984	1983
<b>CATERING SERVICES</b>		
Bar Trading		
Sales	201,115.18	184,393.56
Less: Cost of Goods Sold	91,533.68	80,061.45
	109,581.50	104,332.11
Less: Wages	68,647.07	52,417.65
Payroll Tax	3,995.64	3,088.83
Surplus on Bar Trading	36,938.79	48,825.63
Function Trading		
Food Sales	150,777.71	146,832.15
Liquor Sales	52,808.68	59,164.46
	203,586.39	205,996.61
Less: Food Costs	54,512.85	51,915.60
Liquor Costs	23,776.28	26,381.85
Gross Profit	125,297.26	127,699.16
Less: Function Labour Costs	54,404.62	55,154.71
Function Expenses	2,905.00	1,843.07
Surplus on Function Trading	67,987.64	70,701.38
Food Services Trading		
Sales - Servery	371,917.29	388,990.03
Takeaway	167,743.60	21,765.61
Bistro	126,256.51	111,816.53
Machines	8,668.36	8,170.30
	674,585.76	530,742.47
Less: Cost of Goods Sold	422,173.26	343,490.59
Gross Profit	252,412.50	187,251.88
Less: Wages	297,468.39	219,546.63
Payroll Tax	17,558.92	13,327.82
Deficit on Food Trading	( 62,614.81)	( 45,622.57)
Institute Services Trading		
Sales	68,070.99	45,666.21
Less: Cost of Goods Sold	39,782.80	26,933.59
Gross Profit	28,288.19	18,732.62
Less: Wages	27,028.83	18,645.15
Surplus on Institute Trading	1,259.36	87.47
Total Profit from Catering Services	43,570.98	73,991.91
Less: Catering Overheads		
Gas	269.58	1,201.67
Laundry	10,515.99	8,497.88
Process Heating (Elect.)	15,990.00	14,173.31
Replacement of Crockery, Cutlery and Glassware	10,832.40	9,847.56
Sundries	3,342.60	3,412.57
Superannuation	6,175.80	5,093.85
Uniform Allowances	6,796.76	6,061.24
Uniforms	1,845.23	2,184.61
Vending Machine Hire	48.00	108.00
Workers Comp. Insurance	15,873.95	8,721.35
	71,290.31	59,302.04
Surplus for Catering Services transferred to Income and Expenditure Account	\$(27,719.33)	\$ 14,689.87
<b>SHOP TRADING</b>		
Sales	145,858.78	111,079.62
Less: Cost of Goods Sold	99,216.28	74,063.58
Gross Profit	46,642.50	37,016.04
Less: Wages	27,913.48	21,923.19
Payroll Tax	1,357.06	1,022.02
Sundry Expenses	115.70	96.60
Surplus from Shop Trading transferred to Income and Expenditure Account	\$ 17,256.26	\$ 13,974.23

THE UNIVERSITY OF WOLLONGONG UNION

STATEMENT OF SOURCE & APPLICATION OF FUNDS FOR THE YEAR ENDED 31ST DECEMBER, 1984

SOURCE OF FUNDS

Funds provided from operations:			
Operating surplus for the year		128,336	
Add: Non-fund items - depreciation	20,204		
- loss on disposal			
of fixed assets	630	20,834	149,170
Withdrawal of funds from Bank Accounts			22,404
			\$171,574

APPLICATION OF FUNDS

Acquisition of Fixed Assets:			
Plant and Equipment			89,179
Furniture and Fittings			35,315
Building Improvements			13,248
			137,742
Increase in Working Capital			33,832
			\$171,574



**Peat, Marwick, Mitchell & Co.**  
CHARTERED ACCOUNTANTS

**AUDITOR'S REPORT TO THE MEMBERS OF THE  
UNIVERSITY OF WOLLONGONG UNION**

We have been unable to ascertain that the Members' fees received or receivable by the Union for the year ended 31st December, 1984 represents the total fees collected by the University of Wollongong on the Union's behalf.

Apart from this the accompanying accounts being the Balance Sheet and Statement of Income and Expenditure of the University of Wollongong Union are, in our opinion, properly drawn up under the historical cost convention stated in Note 1, and so as to give a true and fair view of the state of affairs of the University of Wollongong Union as at 31st December, 1984 and of the result for the year then ended in accordance with the provisions of the Constitution, as amended.

*Peat, Marwick, Mitchell & Co.*

PEAT, MARWICK, MITCHELL & CO.  
Chartered Accountants

*Albert J. Cachia*

ALBERT J. CACHIA  
Partner

5th Level,  
111-113 Crown Street,  
WOLLONGONG, N.S.W. 2500.

25th February, 1985

THE UNIVERSITY OF WOLLONGONG UNION

STATEMENT BY  
THE UNION BOARD OF MANAGEMENT

In the opinion of The University of Wollongong Union Board of Management the accompanying Balance Sheet is drawn up so as to give a true and fair view of the state of affairs of the Union as at 31st December, 1984 and the accompanying Statement of Income and Expenditure is drawn up so as to give a true and fair view of the results of the Union for the year ended 31st December, 1984.

*G. A. Williams*

G. A. Williams  
Secretary/Manager

## THE UNIVERSITY OF WOLLONGONG UNION

### NOTES TO & FORMING PART OF THE ACCOUNTS FOR THE YEAR ENDED 31ST DECEMBER, 1984

#### 1. Statement of Accounting Methods

The accounting methods adopted by the Union are in accord with the accounting standards required by the Australian accounting bodies and/or by law. The accounts have been prepared primarily on the basis of historical costs and do not take into account changing money values or, except where stated, current valuations of non-current assets. Non-current assets have been written down to replacement value where required.

Set out below is a summary of the significant accounting methods adopted by the Union and, in particular, the accounting method adopted where there exists a choice between two or more acceptable methods.

##### a) Depreciation

Depreciation is provided on all fixed assets so as to write off the assets progressively over their estimated economic life. The straight line method of depreciation has been used.

##### b) Stock Valuations

Stock has been valued at cost. Cost is based on the first-in first-out principle and includes expenditure incurred in acquiring the stock and bringing it to the existing condition and location.

These bases of valuation are consistent with those of previous years.

##### c) Members' Fees

Members' fees are brought to account in the year to which the fees relate, and not necessarily the year in which the University of Wollongong, which collects those fees on behalf of the Union, remits them to the Union.

Entrance fees are included in members' fees.

##### d) Interest Income

Interest income is brought to account on an accrual basis.

##### e) Provision for Long Service Leave

Long Service Leave is provided for all employees, including part-time employees.

#### 2. Sports Association and Students' Representative Council Subvention

The Union charges the Sports Association and the Students' Representative Council an annual fee to cover costs incurred by the Union in the administration of those bodies.

#### 3. Stock

	1984	1983
Stock on Hand comprises:		
Catering	22,445	15,657
Bar	23,541	21,373
Shop	27,597	23,360
	\$73,583	\$60,391

#### **4. Wollongong Institute of Education**

As from 1st January, 1983, the former Wollongong Institute of Education came under the administration of the University of Wollongong. The agreement relating to the transfer of the assets of the Wollongong Institute of Education Students' Association resulted in funds being invested by the Union in an account titled "Institute Capital Development Fund". This money, and interest earned thereon, can be used for any development project on campus approved by the Union Board of Management after the Board has considered a recommendation by the Institute Students' Association for such use.

#### **5. Capital Commitments**

Amounts contracted for but unpaid as at 31st December, 1984 for building renovations amounts to \$42,000.00.

#### **6. Sundry Debtors**

Included in Sundry Debtors is an amount of \$20,153 (1983: \$15,318) representing interest receivable on investments.



Wollongong Institute of Education  
 As from 1st January, 1983, the former Wollongong Institute of Education merged with the University of Wollongong. The agreement relates to the transfer of the assets of the Institute of Education to the University of Wollongong. The agreement also provides for the transfer of the Institute of Education's 'Student Development Fund' to the University of Wollongong. The agreement also provides for the transfer of the Institute of Education's 'Student Development Fund' to the University of Wollongong. The agreement also provides for the transfer of the Institute of Education's 'Student Development Fund' to the University of Wollongong.



B. Capital Commitment  
 Amounts contracted  
 Sundry Debts  
 Interest in Sundry Debts



These sketches of University buildings and those appearing elsewhere in this report are available, in a 6 postcard series, from the University Union Shop.

## STAFFING

1984 saw significant changes to the staffing of the Union intended to provide a satisfactory basis for the expansion of services over the next few years. A separate administrative structure was created for the Sports Association and in consequence of the changes to the post of Recreation and Activities Officer a new Activities and Cultural Officer appointment was made by the Union.

The post of Catering and Functions Officer was divided into two positions of Catering Manager and Functions Adviser in recognition of the major growth of the Union's catering operations in recent years.

The Union was very sorry to lose the services of Val Barnhill in June after many years of outstanding work in various posts in the Union's catering area.

The staff of the Union in 1984 comprised:

Assistant Secretary-Manager  
Recreation and Activities Officer  
Sports Association Executive Officer  
Activities and Cultural Officer  
Development Officer  
Secretary  
Accounts Clerk

General Office Assistant  
Receptionist/Typist  
Sports Association Clerical Assistant  
Catering and Functions Officer  
Catering Manager  
Functions Adviser

Chef  
Assistant Chefs

Catering Clerk  
Head Catering Assistant  
Bar Supervisor  
Barman/Cellarman  
Crew Chief  
Attendant/Cleaners

Attendant/Cleaner (Sports Centre/Kids' Uni)  
Part-time Cleaners

Peter Bottele, BCom NSW JP  
Paul Manning, BEd (until 16.7.84)  
Paul Manning, BEd (from 16.7.84)  
Kristina Morgan (from 11.7.84)  
Jill Jones (until 28.9.84)  
Lorna Koetz  
Kathy Fitzsimmons  
Robyn Gaia (from 16.7.84)  
Leigh Wakeford (until 9.10.84)  
Elena Caruşo  
Leonie Hinch (from 20.8.84)  
Val Barnhill (until 15.6.84)  
John Collins (from 13.7.84)  
Linda Browne (from 23.7.84 until 16.10.84)  
Leigh Wakeford (from 12.10.84)  
Syd Knight  
Sheila Park  
Richard Mee (until 26.10.84)  
Tony Michel (from 29.10.84)  
Vickie Chinnock  
Pat Wakenshaw  
Pat Williams  
Don Beale  
Mick Burling  
Paul Innes  
Adriano Lemme

Edward Jamieson (from 27.2.84)  
Ann Atkins  
Beryl Fitzpatrick  
Nancy McGregor  
Anita Trevisanut

In addition to its full-time establishment the Union provided employment for over 100 part-time casual staff throughout the year, of whom more than 30 were students.

### New Appointments in 1984



John Collins



Kris Morgan



## ACTIVITIES

1984 was another successful year for the Union's activities programme. The appointment of an Activities and Cultural Officer and the revision of the structure of the Activities Committee in an attempt to improve co-ordination of events with the Students' Representative Council were indicative of the Union's determination to continue to develop its range of activities.



Special activities nights  
in the Bistro were introduced in 1984  
(Posters by Kathy Orton, School of Creative Arts).

## ENTERTAINMENT BANDS

Free Thursday night entertainment featuring top local and Sydney bands continued to be highly popular social events. A number of lunch-time concert performances were also held. Especially successful nights included the visit of "Sirocco" and the bush night featuring "Speewah".

## FILMS

The Film Group once again presented top movies every Wednesday in the Union Hall and continued to draw good attendances. A number of Saturday evening shows were also arranged, mainly of films receiving their first screening in Wollongong such as "Carmen", "La Traviata" and "The Draughtsman's Contract". A series of free lunch-time films was presented in each session by the Film Group in association with the Activities Committee.

## ANNUAL DINNER

The guest speaker at the 1984 Union Dinner was the playwright Dorothy Hewett, who was writer-in-residence at the University at the time. An audience of 170 people enjoyed a very lively address by Ms. Hewett.

## ART EXHIBITIONS

Because of the pressure of room-bookings the Union had to reduce the number of exhibitions it normally stages in 1984. However, another very successful "Three Potters" exhibition, featuring the work of Ann Payne, Barbara Craken-thorp and Ann Webb was staged in the Northern Lounge in July and a short exhibition by visiting Israeli artist Zigmund Waldman was held in the Common Room in October.

## PUBLIC MEETINGS

The Public Questions Forum programme of current affairs debates was once again administered by the Union. Topics included Women and the Peace Movement, The State Election and the Chamberlian Verdict. The Sixth R.F.X. Connor Memorial Lecture, organised by the Historical Society, drew a packed house to the Union Hall to hear Dr. Gerd Bastian and Petra Kelly of the German Green Party talk on nuclear disarmament.

## CLUBS AND SOCIETIES

Union Clubs and Societies continued to add significantly to the range of activities available on campus. Two new groups affiliated to the Union in 1984 - the Environmental Science Society and the Mature Age Students Association. Other active clubs and societies, additional to those mentioned elsewhere, included the Catholic Society, the Italian Club, the French Club, the Geological Society, the Amateur Radio Club, the Wine Appreciation Society, the Literature Society, the Nuclear Disarmament Association, the Women's Collective, the Simulation Games Society and the Camera Club.

## PIANO BAR

During Second Session the Common Room was used on Tuesday evenings as a Piano Bar. This was part of a deliberate attempt by the Union to create a quiet atmosphere venue to counter-act some of the over-crowding of other social areas.

**EVERY TUESDAY**

**OPEN**

For Members & guests only.

**PIANO BAR**

TUESDAYS 5 till 9pm COMMON ROOM  
Union Building from 4th September  
**LIVE ENTERTAINMENT  
BAR SERVICE  
ADMISSION FREE**



## RECREATION CLASSES

A wide range of recreation classes was offered as part of the Union's programme of activities. Courses included Yoga, Tai Chi, Typing, Basic Aerobics and Meditation.

## CONCERTS

A series of free lunch-time recitals was again staged in 1984. Artists included the Relative Music Quartet, Don Harper's Australian Jazz Chamber Ensemble, The Song Company, Canadian-flautist Antonia Huxtable and various student performers from the School of Creative Arts. The University Singers under the direction of David Vance, held a number of concerts in the Union Hall and several other evening concerts were also staged in this venue, including the Semi-Final of the Illawarra Music Club's 1984 Yamaha Piano Competition.

## MUSICA VIVA CONCERTS

In 1984 the Union continued responsibility for the administration of Musica Viva's concert series in Wollongong. Four concerts were staged at Wollongong City Gallery - featuring the Australia Ensemble, Reger Trio, Australian Chamber Orchestra and the Sequoia Quartet. A fifth Musica Viva event - featuring the Mucky Duck Bush Band from Perth - was incorporated into the Union's activities programme as an 'Australiana' night in the Union Hall.

## CAMBRIDGE UNIVERSITY FOOTLIGHTS

The Union, in association with Wollongong Arts Council, promoted two highly successful performances by the renowned Cambridge University Footlights Revue at Wollongong Town Hall in April.

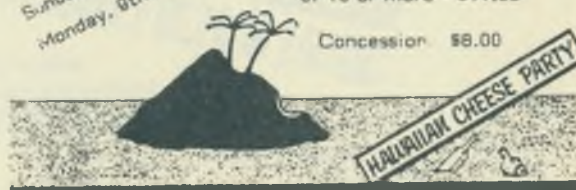
## THE CAMBRIDGE UNIVERSITY FOOTLIGHTS REVUE

Full Rate: \$12.50

Sunday, 8th April  
Monday, 9th April

Arts Council members or Groups  
of 10 or more - \$11.00

Concession: \$8.00



## INSTITUTE SECTOR ACTIVITIES

During the year the Union's Institute Students Association organised a number of activities which had been a traditional part of the Institute social scene, including the Orientation Ball, the Talent Quest, Grammy Ball and Graduation Ball.

## COMMUNITY EMPLOYMENT PROJECTS

As part of its policy of community service the Union sponsored two job-creation projects in 1984. The Migrant Health Information project employed 6 people for 3 months to produce health information posters and leaflets in a number of languages. The Migrant Heritage Project employed two persons for 6 months, based at an office at Port Kembla, to carry out research into proposals to establish a Migrant Heritage Centre.

The staff employed on these projects were:

### Migrant Health Information

Co-Ordinator	-	Isabel Palmeiro
Staff	-	Brenda-Ann Armstrong
		Lynne Keevers
		Catherine Koutroumanos
		Coralie Pope
		Zagorka Trkulja

### Migrant Heritage

Co-Ordinator	-	Ann Bubb
Clerical Assistant	-	Maria Castro

## COMMUNITY CLUBS AND SOCIETIES WEEKEND

As its contribution to Wollongong's 150th Anniversary celebrations the Union organised a weekend on campus featuring activities and displays by the city's clubs and societies. Over 60 organisations participated representing arts and crafts, charitable and welfare bodies, sports and recreation, and educational and lifestyle groups. Activities included concerts, dances, film-shows, lectures, a fun-run and various sports matches.

Unfortunately a combination of extremely bad weather, a petrol strike and the televised opening of the Olympic Games kept public attendance low but the event was nevertheless successful in bringing into contact many community groups with similar aims.

The Community Weekend was supported by the B.H.P. Group of Companies (through the Wollongong 150th Committee) and "The Wollongong Advertiser".

## SPORTS ASSOCIATION

Until this year the Sports Association had been administered by the Union with the Secretary-Manager also serving as Executive Secretary of the Sports Association. However, with the very rapid growth of both the Union and Sports Association in recent years it was apparent that the time had come for the Sports Association to develop its own administrative structure.

Accordingly midway through 1984 Paul Manning, who had worked as joint Sports Association-Union Recreation and Activities Officer since April 1981, was appointed as Executive Officer of the Sports Association. A new office area was created for the Sports Association by converting the Table-Tennis room in the Squash Courts wing of the Union.

The Union will continue to provide some accounting and office services to the Sports Association in the short term.

## LIAISON WITH THE S.R.C.

The Secretary-Manager and Assistant Secretary-Manager of the Union resigned as Trustees of the Students' Representative Council in June 1984, after acting in this capacity for three years, and the Union ceased to provide accounting services for the S.R.C.

## CHILDCARE CENTRE

The University Childcare Centre ("Kids' Uni") is administered by the Parents' Club which is an affiliated society of the Union, responsible to the Board of Management.

The beginning of 1984 was marked by the opening of Stage II of the Childcare Centre - another building project which was completed on schedule thanks to the work of Peter McNamara. This extension increased the capacity of Kids' Uni from a 25-place to a 50-place centre. In 1984 care was provided for a total of 214 children from 161 families.

The staff of the Childcare Centre for 1984 comprised —

Director	-	Jillian Trezise
Assistant Teachers	-	Trudy Ruiz Joanne Sheppard
Nurse	-	Robyn Ashe
Part-time Nurses	-	Jean McNeilly Ellen Norris Christina Williams
Part-time General Assistants	-	Lorraine Barrow Susan Cochrane Lisa Crittenden Anne Palmer Kim Robson Doreen Wilson

Sue Rowley completed an important year as President of the Parents' Club and Rie Natalenko was elected as her successor following the Club's annual general meeting.



Stage II of the Childcare Centre opened in 1984.



